

## NEW ZEALAND CHESS SUPPLIES

P.O.Box 42-090 Wainuiomata  
 Phone (04)564-8578 Fax (04)564-8578  
 Email: chess.chesssupply@xtra.co.nz

Stockists of the widest selection of modern chess literature in Australasia.  
 Chess sets, boards, clocks, stationery and all playing equipment.  
 Distributors of all leading brands of chess computers and software.  
 Send S.A.E. for brochure and catalogue (state your interest).

### PLASTIC CHESSMEN 'STAUNTON' STYLE - CLUB/TOURNAMENT STANDARD

90mm King, solid, extra weighted, wide felt base (ivory & black matt finish)	\$ 28.00
95mm King, solid, weighted, felt base (black & white semi-gloss finish)	\$ 17.50
98mm King solid, weighted, felt base (black & white matt finish)	\$ 24.50
Plastic container with clip tight lid for above sets	\$ 8.00

### FOLDING CHESSBOARDS - CLUB/TOURNAMENT STANDARD

480 x 480mm thick cardboard (green and lemon)	\$ 6.00
450 x 450 mm thick vinyl (dark brown and off white)	\$ 19.50

### VINYL CHESSBOARDS - CLUB/TOURNAMENT STANDARD

450 x 470 mm roll-up mat type, algebraic symbols at borders to assist move recognition (green and white)	\$ 7.50
440 x 440mm semi-flex and non-folding, algebraic symbols as above (dark brown and off-white)	\$ 11.00

### CHESS MOVE TIMERS (CLOCKS)

'Turnier' German-made popular wind-up club clock, brown plastic	\$ 80.00
'Exclusiv' German-made as above, in imitation wood case	\$ 98.00
'Gambit' Deluxe wood - large face	\$129.00
SAITEK digital game timer	\$140.00

### CLUB AND TOURNAMENT STATIONERY

Bundle of 200 loose score sheets, 80 moves and diagram	\$ 7.00
Bundle of 500 loose score sheets, 80 moves and diagram	\$ 15.00
Score pad, spiral-bound, 50 games, score sheets as above	\$ 3.50
Score book, spiral bound, lies flat at any page, 50 games of 70 moves, with index and diagram for permanent record	\$ 7.00
Artyfax peel-and-stick symbols (400 pieces) plus 20 diagram blocks	\$ 8.00

### MAGNETIC CHESS

190 x 150mm (15mm green & yellow squares) flat disc pieces	\$ 38.50
270 x 200mm (24mm green & yellow squares) flat disc pieces (NZ made)	\$ 19.00
Standing pocket set 125 x 125 mm (15mm b & w squares)	\$ 5.00
Standing 325 x 325mm (38mm squares, 65mm King)	\$ 24.50

WE ARE BUYING CHESS LITERATURE OF ANY AGE AND ANY CONDITION.  
 TOP PRICES PAID.

Please contact us with details for an offer.

**EVERYTHING FOR CHESS AT N.Z.C.S.**

# New Zealand Chess

Official magazine of the New Zealand Chess Federation (Inc)

Vol 27 Number 3

June 2001



Ben Giles plays simul at Christchurch Girls Champs

## New Zealand Chess

Official journal of the New Zealand Chess Federation (Inc.), published in February, April, June, August, October, December.

Editorial correspondence, copy and advertising inquiries should be sent to

New Zealand Chess  
c/- P O Box 1627  
Taupo, 2730

Opinions expressed in articles, letters and other contributions are those of the authors. Letters on chess topics are welcome; limit 150 words and marked "for publication."

### EDITORIAL

Editor,  
Overseas news editor, Peter Stuart.

### SUBSCRIPTIONS

Subscription payments should be sent to

Treasurer, NZCF  
P O Box 216  
Shortland Street  
Auckland

### ANNUAL SUBSCRIPTION RATES

New Zealand, \$20.00.  
Australia, South Pacific, \$US12.00 airmail.  
East Asia, N America, \$US15.00 airmail  
Europe, \$US117.50 airmail, \$12.50 economy.  
Rest of world, \$US20.00 airmail, \$US15.00 economy.

Back issues available - send for details.

### ADVERTISING RATES

Full page, \$NZ\$45.00  
Half-page or full column, \$NZ22.50  
Half column, NZ \$12.00

### COPY DEADLINE

June issue, Fri August 31  
Homepage: <http://ourworld.compuserve.com/homepages/nzchess>  
Email to editor: [triangle@voyager.co.nz](mailto:triangle@voyager.co.nz)

## Editorial Changes

This issue sees a change in the Editor of "NZ Chess". Ted Frost, who has produced the magazine for the past eight years, has stepped down. Ted has done a magnificent job and he certainly deserves a rest after so many hours of voluntary service to the chess community (although he will be continuing to work as NZCF Regional Councillor and trustee of "NZ Chess Friends"). On behalf of the New Zealand Chess Federation and of chess players across the country, I would like to express my appreciation of the work that Ted has put in to produce for so long what I regard as a vital element of chess in this country, in terms of entertainment, education, communication and history. We are fortunate that Graeme Trass has agreed to take over as Editor of "NZ Chess". In the past Graeme has assisted Ted in producing previous issues of the magazine. He is the father of one of the country's top juniors, Ryan Trass, a former NZ Junior Champion who finished third in this year's Junior Championship despite a lengthy break from chess. Graeme has had a tough start as Editor, taking on this issue after the deadline was already several weeks past. However, he anticipates that the August issue will be no more than three weeks late and the October issue will be back on time. Thank you Graeme, for stepping into the breach. I am confident that under your stewardship readers can look forward to "NZ Chess" maintaining the high standards set by Ted. I hope that chess players throughout the country will give you their wholehearted support.

Bob Smith  
President NZCF

## New Zealand Chess

Volume 27 Number 3

June 2001

### CONTENTS

4. Council Corner—NZCF President Bob Smith reports on new Federation initiatives, new workers for chess and upcoming events.
6. Chess for Girls Week—NZCF Female Chess Convenor Viv Smith has a rundown on NZCF's recent exciting new concept. Tournaments for girls were held in Auckland, Christchurch and Dunedin—and gained primetime television exposure!
8. 24<sup>th</sup> Waitakere Licensing Trust Chess Open—A strong field turned out to contest the country's biggest and richest annual weekender. Another success for organisers Waitemata Chess Club—and for New Zealand's top ranked player, Alexei Kulashko.
12. NZCF Rating List for 1—2001—Check out how you've been playing in the last 6 months. The figures don't lie!
25. New Zealand News—Recent chess happenings at local level. Reports from clubs around the country.
26. Overseas News—Peter Stuart has the latest on what's happening on the international circuit

### South Island Chess Championships 2001 The *Otago Chess Club (Inc)* invites entries for the 2001 *South Island Chess Championships*

Dates Monday 24 September Friday 28 September 2001

Venue Otago Chess Club, 7 Maitland Street, Dunedin

Format 8 Round Swiss

Time Control 40 moves in 105 minutes, followed by 30 minutes  
"Guillotine" finish

Entry Fees (NZCF Registered Players, includes NZCF Tournament Levy) **Adult \$60,**  
**Junior/Unwaged \$30**

Further Enquiries Duncan Watts (Secretary, Otago Chess Club)  
Phone (03) 4775226 e-mail [watts.duncan@lycos.com](mailto:watts.duncan@lycos.com)

## Council Corner

by NZCF President Bob Smith

### Girls Chess Week

The major project to take place since the last issue of "NZ Chess" was the inaugural Chess for Girls Chess Week in late May. This concept proved an overwhelming success, with girls' tournaments held in three main centres and television and newspaper coverage. Congratulations to all concerned. NZCF's Female Chess Convenor, Viv Smith, has a full report on this ground-breaking event on page .....

### New Workers

Two new and enthusiastic volunteers have been co-opted on to the Female Chess Committee.

Jacinta Buist, who is a driving force in girls and junior chess in Christchurch, has agreed to come on board. Felicity Timings, who is no less enthusiastic and energetic in promoting junior chess on Auckland's North Shore, has also joined the committee. It is clear already that both will be invaluable additions to the team.

### Ratings

Rowan Wood has been appointed Ratings Officer following the resignation of Daniel Johns.

Rowan has been involved with the rating system for many years and probably knows the nuances better than anyone. Viv Smith has volunteered to take on the job of data entry, and is currently getting to grips with the procedures. Bob Gibbons remains Ratings Convenor.

The six-monthly NZ ratings are currently posted on the "NZ Chess" website - [our-world.compuserve.com/homepages/nzchess](http://our-world.compuserve.com/homepages/nzchess). Council is still striving for more

regular updates. Tournament results can be sent to the NZCF Secretary, Jack Frost, at P.O. Box 216 Shortland St Auckland 1, or e-mailed to Viv Smith, providing they are in the correct format. Viv's e-mail address is: [bobviv@actrix.gen.nz](mailto:bobviv@actrix.gen.nz)

### Tournament Venues

This year's 109<sup>th</sup> NZ Chess Congress is being hosted by Canterbury Chess Club in Christchurch. For details e-mail the organiser, Chris Wright, at [wrights@xtra.co.nz](mailto:wrights@xtra.co.nz). The 110<sup>th</sup> NZ Congress has been awarded to Wanganui, who have already begun their planning! We look forward to two great Congresses in a row.

The North Island Championship and Rapid Championship are being hosted by Hamilton from 9-14 July. Contact Hilton Bennett [hiltonb@wave.co.nz](mailto:hiltonb@wave.co.nz)

The South Island Championship and Rapid Championship are in Dunedin, from 24-29 September. Otago Regional Councillor Duncan Watts reports there will be some billets available. Otago Chess Club is also currently negotiating hotel discounts. Dunedin can be

e-mailed at [trewern@ihug.co.nz](mailto:trewern@ihug.co.nz). The NZ Junior and Age Group Championships are at the Auckland Chess Centre from 2-5 July. Contact Aidan ph (09) 845-6705 or Bruce Wheeler [prez@i4free.co.nz](mailto:prez@i4free.co.nz). The winner qualifies to represent New Zealand in the World Junior Championships in Athens from 16-29 August. Results will also have a bearing on our representation at the Asian Under 16 Championships in Qatar from 6-16 October.

## Manawatu Secondary Schools' Championship

The 2001 Manawatu Open Secondary Schoolpupil's Chess Championship was held at Palmerston North Boy's High School on 4 August 2001. Director of play was Martin Sims, assisted by Barry Williams.

The event attracted a field of 33 players (all boys) and was played as a 5-round 25-25 swiss tournament. There were 16 players from P.N.B.H.S., 7 from Fielding Agricultural H.S., 4 from Wanganui, 3 from Rathkeale College, 2 from Awatapu College, and 1 from Freyberg H.S. They battled with good sportsmanship throughout and all tables had digital clocks. The playing facility was carpeted and had good lighting, and cordial and biscuits were provided.

Andrew Kuhn of Wanganui won the tournament with 5 points. Two players were on 4 points and a 5-minute playoff gave 2nd place to Ahmed Al-Hindawi of Wanganui and third place to Jing-wen Chiu of P.N.B.H.S. 5 players with 3½ points had a 5 round 5-minute swiss playoff to determine the other placings. Waata Hipango, of Wanganui, won all his games in the playoff for 4th place while Thomas Lissington, J. Wright, and Chris Parker, all of P.N.B.H.S. each won 2 of their games for a share of 5th and 6th prizes.

Book prizes, provided as sponsorship by Brian Foster of New Zealand Chess Supplies were also given to outstanding players after each round.

### NZ Women's Championship

The NZ Women's Championship will be held at Labour Weekend at the Auckland Chess Centre, under the auspices of the Auckland Chess Association. This tournament will have a major bearing on selections for next year's Olympiad. Council is hopeful of a good turnout, in view of the excellent response to the Girls Chess Week.

### Registrations, Affiliations

Well done in terms of affiliations, everyone! Almost all clubs are up to date with their 2001 affiliation fees. Registrations are also coming in steadily. However, we could always do with more. So if you have any unregistered members out there, how about signing them up with NZCF and improving our bargaining power? Remember, the more members we have, the stronger chess becomes.

### In the next issue:

Report and games for the North Island Championships and Rapid Championships held in Hamilton. Bob Smith reports on the recent holiday he and his wife Viv (and children) enjoyed in sunny Queensland—with some chess on the side! Plus international coverage from Peter Stuart, correspondence chess update, a busy time for NZCF Council and much more!



## Chess for Girls Week

- by NZCF Councillor Viv Smith

Last year I read a column by New Zealand Herald feature writer Jo Bennett saying that he'd never seen a woman playing chess and concluding that females don't play the game. At the time I was inclined to agree with him. The state of female chess in New Zealand was dismal. There'd been a meagre four players in the 2000 New Zealand Women's Chess Championship, and it was a struggle to find four to represent New Zealand at the Chess Olympiad in Turkey; in the end only three made it. The talented Ong and Sheehan sisters had disappeared from the chess scene and there was no sign of any new blood coming through the ranks. A new initiative was well overdue.

The obvious place to start developing a new generation of female players is in the schools. I knew from experience with local schools that girls can and do play chess but often feel intimidated by boys and soon lose interest. Hopefully having girls only tournaments would encourage female players to come out and play. We could identify any talent and encourage them to stay with the game. When other girls see girls playing chess they too will take an interest, generating more and more players.

The new New Zealand Chess Federation was quick to embrace the idea of a nationwide Girls Chess Week and it went ahead in May.

The idea was that certain clubs around the country would be asked to run girls only tournaments during the week of 28 May to

1 June.

It was anticipated that not all clubs approached would be willing or able to help, especially with such an untried concept. In the event Waitemata, Canterbury and Otago chess clubs ran regional girls championships, with Wellington promising to run one at a later date.

I can only say that the idea proved overwhelmingly successful.

In Auckland we had an incredible 128 entries. Schools, children and parents alike were enthusiastic, and we achieved prime-time nationwide television coverage on TVNZ's One News – the first time chess has featured in some considerable time.

The competition was also covered extensively by the New Zealand Herald, which published a large photo of promising 12-year-old Evgenia Sharomova, and by the local newspaper.

The huge response caused some organisational problems, especially in terms of keeping to the timetable. Federation President Bob Smith was Director of Play, and was at full speed all day manually pairing up 128 girls (next year NZCF hopes to have a laptop computer and pairing programme). Late entries and a few no-shows also caused some difficulties. Time constraints eventually forced the tournament to be reduced from six to five rounds. This was not ideal and resulted in several multiple ties. But despite teething problems, the Auckland Girls Chess Championship was a great success. We have had very favourable feedback from schools that were in-

involved – some are now starting up chess clubs for the first time.

Christchurch also ran a very successful girls championship, with over 30 entries. Organiser Jacinta Buist – who has now joined NZCF's Female Chess Committee – reports that everyone was delighted with the day, and she is keen to run it again next year. A highlight was a simul by South Island Champion Ben Giles, who also helped as arbiter, along with NZCF Regional Councillor Craig Hall and Canterbury Chess Club's Chris Baker. Dunedin's Girls Tournament was a little more low-key, with 10 participants. However, that is still more than double the number of females who played in the last New Zealand Women's Championship! Otago stalwart Graham Haase organized the event, which ended in a tie between two high school students.

The New Zealand Chess Federation provided special certificates for all three competitions.

To sum up, the Girls Chess Week was well worth trying and is almost certain to become a regular annual feature. It produced excellent positive publicity for chess, was cost effective and achieved its main aims of encouraging more girls to play and identifying potential talent.

I'd like to express my personal thanks to everyone who helped make this 'week' a success.

NZCF Council has now decided to follow

up with a coaching day in August for leading participants, with an eye to this year's New Zealand Women's Championship at Labour Weekend. Who knows, some of the girls discovered during the Girls Week could end up playing for New Zealand at next year's Olympiad in Slovenia.

### Results

**Auckland Girls Chess Championship:** Evgenia Sharomova, Natasha Fairley and Samantha Smith 1=(5/5). Under 14 Champion: Natasha Fairley. Under 12 Champion: Evgenia Sharomova. Under 10 Champion: 7-way tie between Sue Mararoa, Jessica Burchell, Serra Tang, Lauren Black, Amy Sotheran, Caitlin Hollings and Anna Powell (4/5). Under 8 Champion: Sharon Wu (4/5).

**Christchurch Girls Chess Championship:** Hannah Mason 1.

Under 18 Champion: Lynne Chudley, Under 14 Champion: Hannah Mason. Under 12 Champion: Daisy Xu. Under 10 Champion: Manu Somerville. Under 9 Champion: Victoria Gee. Under 8 Champion: Kathryn Mason. Under 7 Champion: Ellen Paquier.

**Otago Girls Chess Championship:** Nicola Porteous won a play-off to take the title.

### BIRKENHEAD LICENSING TRUST OPEN

The BIRKENHEAD LICENSING TRUST OPEN will be run in Auckland by the North Shore Chess Club on 22 & 23 September. The format will be two separate five round swisses (open and under 1750), with a fischer time control.

## 24<sup>th</sup> Waitakere Licensing Trust Chess Open

by FM Bob Smith

An avalanche of last minute entries dispelled organisers' fears that players had forgotten that the country's richest weekender was being held on May 5 and 6. On the day, 74 players fronted up for Waitemata Chess Club's annual tournament.

Of these, eleven were rated higher than the New Zealand Championship cut-off point of 2000.

The geographical spread was also impressive, with entrants from Wellington and even as far afield as Christchurch.

The obvious favourite was defending champion and New Zealand number one FM Alexei Kulashko. Strong opposition was expected from the likes of IM Russell Dive, New Zealand Champion FM Scott Wastney, Championship runner-up Leonard McLaren, and Olympiad representative NM Peter Green. Others who might trouble included FM Bruce Watson, seeded seventh, and tournament organiser FM Bob Smith, who was seeded fourth. The notional top seed was 16-year-old Rong Wang, who was suffering from an unrealistic initial rating based on just five games.

The A Grade involved a respectable 26 players, 26 players also contested the separate B Grade, while there were 22 in the C Grade.

### Round One:

The top half almost made a perfect swiss pairing start, with just two stumbles. Mark Van der Hoorn (1973) could only draw with Philip Hair (1763), while Roger Perry (1963) went one worse, losing to a suppos-

edly rusty Lou Rawnsley (1753).

### Round Two:

In what could have been the decisive game of the tournament, Watson gifted a point to Kulashko, blundering a rook in a position that the defending champion would have had to work hard to save. Dive outpositioned McNabb, Wastney beat Krstev and McLaren was too strong for Rawnsley. Smith could only draw an optically impressive position against Guthrie, while Green and Wang also drew. Van der Hoorn made amends for his slow start by handing Perry his second loss.

### Round Three:

Kulashko reached the perfect score with a win over McLaren. Dive hung on for a draw against Wastney, and Van Der Hoorn beat Wang from a position that looked suspiciously lost. Smith drew with Green after throwing away a clear advantage. Leading scores: Kulashko 3; Dive, Wastney, Van der Hoorn 2.5; Smith, McLaren, Watson, Green, McNabb, Krstev, Bennett 2.

### Round Four:

Dive was unable to convert a positional advantage against Kulashko, Wastney recovered from a lost position against Van der Hoorn to steal a whole point, Smith beat Krstev after the latter overlooked a simple tactic, McLaren accounted for Goodhue, and Bennett surprised with a comprehensive win over Watson. Leading scores: Kulashko, Wastney 3.5; Dive, Smith, McLaren, Green, Bennett 3.

### Round Five:

Kulashko defeated Wastney to ensure first place. Dive beat Green to move into second. McLaren and Smith slugged away in an attempt to join him, with Smith eventually blundering in a probably drawn position. Van der Hoorn put a stop to Bennett's unexpected run, while Guthrie also vaulted over those on 3 with a win over Wang.

### Conclusion:

Alexei Kulashko once again confirmed his class – only in round two against Watson did he look a little shaky. Dive went through undefeated – in past years 4/5 has proved good enough for first, but unfortunately for Russell not this time. Joint runner-up McLaren also performed well, losing only to Kulashko. In fourth place Wastney also lost only to the tournament winner. In such a short event one game has a huge impact – in Scott's case it was winner takes all in his final round. Guthrie and Van der Hoorn also tied for fourth, timing their runs well.

The grade one prize was shared between Krstev and Green, who rarely qualifies for such awards. Clear cut winner in grade two was Hilton Bennett, who played well above his rating. And grade three was shared between Philip Hair and John Robinson.

The separate B tournament for players rated between 1400 and 1750 was won by Henry Vital, with four wins and a draw. He was closely followed by Mark Brimble, who was also undefeated. Third place on 3.5 was shared by Jeff Boardman, Rhys Starr and New Zealand Women's Champion Viv Smith. Top seed, 10-year-old Puchen Wang, headed those on three points. The normally very sharp Puchen was unable to escape a drawing rut, splitting the point in

four of his five games.

In the C tournament Thomas Gothorp of Waihi showed the rest of the field a clean pair of heels, winning all five games, and a bonus of \$30 to add to the first prize of \$220. He was followed a point behind by father and daughter Dmitri Charamov and 12-year-old Evgenia Charamova. Aaron Cossey and Peiyu Gao shared fourth on 3.5. The special prize for best junior went to Rong Wang, who scored 2.5/5 in the A grade, while the prize for the best female was shared by Viv Smith and Evgenia Charamova.

The tournament was ably directed by Bruce Pollard, arbiter at the most recent New Zealand Congress. At the close of play prizes totalling more than \$3400 were presented by Ross Dallow, chairman of the sponsor, Waitakere Licensing Trust. And afterwards all participants and officials were treated to free food and drinks – a feature unique to the tournament. So ended another successful Waitakere Trust Open; again the playing conditions, prize-fund and calibre of the competition were highlights of the weekend. Players should earmark the first weekend in May, 2002 for the 25<sup>th</sup> version of one of New Zealand's longest-running weekend tournaments.



## Wto games 2001

by Bob Smith

## Dive,R - Green,P

1.d4 d5 2.c4 c6 3.Nc3 Nf6 4.cxd5  
 cxd5 5.Nf3 Nc6 6.Bf4 e6 7.e3 Bc6 8.  
 Bg5 Be7 9.Bd3 0-0 10.0-0 Bd7 11.  
 Qe2 Rc8 12.Rac1 Re8 13.Bb1 h6 14.  
 Bf4 c6 15.Rfd1 Bf8 16.Ne5 Ne7 17.  
 Qf3 Bc6 18.Bxh6 Nf5 19.Bg5 Nd6 20.  
 Qh3 Be7 21.f3 Qb6 22.Nxd5 exd5  
 23.Bxf6 Bxf6 24.Rxc6 Qd8 25.Nd7 g6  
 26.Rxd6 1-0

## Krstev,A - McNabb,M

1.d4 Nf6 2.c4 c5 3.d5 e6 4.Nc3 exd5  
 5.cxd5 d6 6.e4 g6 7.Bf4 Nh5 8.Bg3  
 Nxg3 9.hxg3 Bg7 10.Bb5+ Nd7 11.c4  
 0-0 12.Nf3 Re8 13.Qc2 f5 14.0-0-0  
 Bxc3 15.Qxc3 Rxe4 16.Rxh7 Nf6 17.  
 Rh6 1-0

## Watson,B - Guthrie,D

1.Nf3 d5 2.g3 Nf6 3.Bg2 e6 4.0-0  
 Be7 5.c4 0-0 6.b3 b6 7.Bb2 Bb7 8.e3  
 c5 9.Qe2 Nc6 10.d3 Qc7 11.Nc3  
 dxc4 12.bxc4 Rad8 13.Rfd1 Rd7 14.  
 Rac1 Qb8 15.Ne1 Rfd8 16.g4 h6 17.  
 f4 Nh7 18.Ne4 Qa8 19.c3 Bf8 20.Nf3  
 Ne7 21.Ne5 Rc7 22.g5 Nf5 23.Rc2  
 c6 24.Re1 b5 25.Qh5 bxc4 26.g6  
 fxg6 27.Qxg6 Re7 28.Ng4 Rf7 29.  
 Ng3 1-0

## Wastney,S - Krstev,A

1.Nf3 d5 2.d4 Nf6 3.c4 c6 4.Nc3 e6  
 5.g3 Bb4 6.Bg2 Nbd7 7.0-0 Bxc3 8.  
 bxc3 Ne4 9.Qc2 Qc6 10.Bb2 b5 11.  
 axb5 axb5 12.c4 0-0 13.axb5 Qxb5  
 14.Rfb1 Re8 15.Bc3 Qc6 16.Bb4 Bc6  
 17.Nd2 f5 18.Nxe4 fxe4 19.Rc6 Bb5  
 20.f3 exf3 21.Bxf3 c6 22.e4 Nf6 23.e5  
 Ne4 24.Re1 Ng5 25.Bg2 Ra7 26.h4  
 Nf7 27.Bf1 Rb8 28.Bxb5 Rxb5 29.Qa4  
 Qb7 30.Ra1 Nxe5 31.dxe5 Qb6+ 32.  
 Kg2 Rf7 33.Rc2 Qe3 34.Rxb5 g5 35.

Rb8+ Kg7 36.Bf8+ Kg6 37.Qc2+ Rf5  
 38.Qe2 Qa7 39.Bc6 d4 40.Rg8+ 1-0

## Md.aren,I - Kulashko,A

1.e4 g6 2.d4 Bg7 3.Be3 d6 4.Qd2 c6  
 5.c4 b6 6.f3 Bb7 7.Nh3 Nd7 8.Be2 h6  
 9.0-0 e6 10.c4 Ne7 11.Nc3 f5 12.  
 Rad1 Nf6 13.Nf2 g5 14.Qc2 f4 15.  
 Bc1 Nd7 16.b4 c5 17.bxc5 bxc5 18.  
 dxc5 dxc5 19.Bb2 Bd4 20.Nb1 Nc6  
 21.Nd2 e5 22.Nb1 Qe7 23.Nc3 Bxc3  
 24.Bxc3 Nd4 25.Bxd4 cxd4 26.Rb1  
 Bc6 27.c5 Kf8 28.Nd3 c6 29.Rb2 Kg7  
 30.Rfb1 Rho8 31.Bd1 Ra7 32.Rc1 h5  
 33.Qc4 Nf6 34.Rb6 g4 35.Bb3 gxf3  
 36.gxf3 Nxe4 37.Rxc6 Qg5+ 38.Kh1  
 Ng3+ 39.hxg3 fxg3 40.Rg1 Qh4+ 41.  
 Kg2 Rxc6 42.Qg8+ Kh6 43.Rh1 Qg5  
 44.Qxg5+ Kxg5 45.Kxg3 Rg7 46.Re1  
 Kh6+ 47.Kh4 Rg2 48.Rxe5 Rcg6 49.  
 Rxh5+ Kg7 50.Nf4 Rh2+ 51.Nh3 d3  
 52.f4 Rb2 53.f5 Rgg2 54.Nf4 Rg1 55.  
 Nxd3 Rh2# 0-1

## Wastney,S - Kulashko,A

1.Nf3 c5 2.c4 g3 3.d4 Bg7 4.e4 cxd4 5.  
 Nxd4 Qb6 6.Nb5 c6 7.Be3 Qc6 8.N5c3 c6  
 9.Be2 Nd7 10.0-0 Ngf6 11.Nd2 Nc5 12.f3  
 e5 13.Nd5 c5 14.Rc1 b6 15.Nb1 Nxc5 16.  
 xc5 Qb7 17.Bb5+ Bd7 18.Qe2 0-0 19.  
 Nc3 Rcb8 20.Bxd7 Qxd7 21.Qb5 Qe7 22.  
 c3 f5 23.b4 axb4 24.axb4 Nb3 25.Rb1 Nd4  
 26.Qc3 Rfc8 27.Bxd4 exd4 28.Nb5 fxe4 29.  
 fxe4 Rc3 30.Nxc3 dxc3 31.b5 Qe5 32.Rb4  
 Rc8 33.Qh3 Rc7 34.Rc1 h5 35.Rc2 Kh7 36.  
 Qg3 Qf6 37.Qf3 Qg5 38.g3 Ra7 39.Kg2  
 Ra1 40.Ra4 Qd2+ 41.Qf2 Qd1 42.Rc7  
 Qh1+ 43.Kh3 Qxe4 44.R2xc3 Qg4+ 45.Kg2  
 Qe4+ 46.Qf3 Ra2+ 47.Kh3 Qxf3 48.Rxf3  
 Kh6 49.Rc6 Be5 50.Rxb6 g5 51.Rxd6+  
 Kg7 52.Rb3 Bxd6 53.b6 g4+ 54.Kh4  
 Kg6 0-1

24<sup>th</sup> Waitakere Licensing Trust Chess Open

	Name	Rtg	R1	R2	R3	R4	R5	PI	SOS
1	A. Kulashko FM	2309	1 b25	2 w9	3 b3	3.5 w2	4.5 b4	1	
2	R. Dive IM	2378	1 w19	2 b17	2.5 w4	3 b1	4 w10	2	15
3	L. McLaren	2234	1 w21	2 b18	2 w1	3 b16	4 w7	3	13
4	S. Wastney FM	2210	1 b20	2 w11	2.5 b2	3.5 w6	3.5 w1	4	17
5	D. Guthrie	2113	1 w16	1.5 b7	1.5 b9	2.5 w13	3.5 b12	5=	13
6	M. Van Der Hoom	1973	0.5 b14	1.5 w23	2.5 b12	2.5 b4	3.5 w8	5=	13
7	R. Smith	2366	1 b13	1.5 w5	2 b10	3 w11	3 b3	7	16
8	H. Bennett	1951	0 b12	1 w14	2 b15	3 w9	3 b6	8	14
9	B. Watson	2204	1 w26	1 b1	2 w5	2 b8	3 w19	9=	13
10	P. Green	2199	1 b24	1.5 w12	2 w7	3 b17	3 b2	9=	13
11	A. Krstev	2029	1 w15	1 b4	2 w21	2 b7	3 w17	11	12.5
12	R. Wang	2439	1 w8	1.5 b10	1.5 w6	2.5 w18	2.5 w5	12	15
13	J. Wojnar	1936	0 w7	0.5 b16	1.5 w14	1.5 b5	2.5 w22	13	12.5
14	P. Hair	1763	0.5 w6	0.5 b8	0.5 b13	1.5 w24	2.5 b23	14	12
15	J. Robinson	1800E	0 b11	1 w20	1 w8	1.5 b22	2.5 w21	15	11
16	N. Goodhue	1871	0 b5	0.5 w13	1.5 b24	1.5 w3	2 b18	16	13.5
17	M. McNabb	2062	1 b22	1 w2	2 b25	2 w10	2 b11	17	12.5
18	L. Rawnsley	1753	1 b23	1 w3	1.5 w19	1.5 b12	2 w16	18	12
19	P. Beach	1938	0 b2	0.5 w24	1 b18	2 w25	2 b9	19	11.5
20	A. Dunn	1912	0 w4	0 b15	0 w22	1 b26	2 b25	20	8.5
21	P. Spiller	1922	0 b3	1 w22	1 b11	1.5 w23	1.5 b15	21	12.5
22	B. Giles	1837	0 w17	0 b21	1 b20	1.5 w15	1.5 b13	22	10.5
23	R. Perry	1963	0 w18	0 b6	1 w26	1.5 b21	1.5 w14	23=	9.5
24	K. Saksena	1871	0 w10	0.5 b19	0.5 w16	0.5 b14	1.5 w26	23=	9.5
25	M. Turner	1943	0 w1	1 b26	1 w17	1 b19	1 w20	25	
26	M. Sims	1885	0 b9	0 w25	0 b23	0 w20	0 b24	26	

## NZCF Rating List for 1-2001 (512 players)

rank	code	name	club	Stan	Ga	Rap	Ga
1	4989	KULASHKO A	AC	2395		2324	
2	3088	SMITH RW	WT	2363	13	2276	15
3	3459	DIVE RJ	WE	2360	11	2346	9
4	3383	KER AF	CI	2351	11	2316	9
5	3002	GARBETT PA	NS	2335	11	2368	6
6	3003	SUTTON RJ	CI	2265		2251	
7	3314	MCLAREN LJ	NS	2245	21	2238	21
8	3460	DREYER MP	NS	2244		2238	
9	3830	WASTNEY SC	GA	2230	11	2117	9
10	3696	LUKEY SG	WE	2215		2200	
11	3206	WATSON BR	NS	2204		2227	6
12	3007	GREEN EM	HP	2193		2104	
13	3005	STUART PW	NS	2172	10	2179	6
14	4364	SINCLAIR M	PE	2169		2236	
15	3199	GREEN PR	AC	2165	11	2227	6
16	3503	KER CM	PE	2145		2029	
17	3151	FREEMAN MR	WA	2139		2110	
18	3176	LOVE AJ	OT	2137		2286	
19	4140	GORIS R	GA	2136		2001	
20	4929	HARE TG	UH	2123	1	1973	
21	3379	HOPEWELL NH	AC	2105		2123	
22	4872	j BUELOBRK I	AC	2101		2035	
23	3507	HART R	NS	2101	10	2094	8
24	4190	GUTHRIE DW	WE	2100	11	2120	9
25	3395	BOYD KM	OT	2093		2132	
26	3386	WHEELER B	AC	2087	10	2048	
27	3350	COOPER DJ	WA	2078		2042	
28	3482	SPAIN GA	GA	2073	10	2120	9
29	3987	MCNABB M	CA	2057	21	1904	15
30	3291	BARLOW MJ	NS	2053	20	2152	9
31	3369	WALSH BG	HA	2052		1762*	
32	3558	DUNN P	WE	2049		1913	
33	3041	METGE JN	PT	2049	10	2023	
34	3526	ROBINSON JP	AC	2032	22	2060	
35	3977	ELLIOT DB	NS	2025	10	1988	
36	3394	NIJMAN BF	CI	2012		1927	
37	3013	POMEROY AJ	WE	2006		2051	
38	3454	SUTHERLAND JL	OT	2001	6	2019	9
39	3393	POST MJ	WA	1991		1874	
40	5083	CROAD N	WE	1990	11	1857	9
41	5104	KRSTEV A	NS	1980	20	2123	6
42	3617	VAN DER HOORN MW	WE	1975	10	2041	9
43	3029	JACKSON JR	CA	1966		unr	
44	5508	j WANG R	NS	1966	22	1837*	9
45	4830	PERRY RL	AC	1963		1813	
46	4124	LIM BU	HP	1960		1907	

47	4300	BURNS CJ	WA	1957		1890	
48	4231	FUATAI F	PT	1957		1786	
49	4469	GILES BJ	NS	1954	11	1776	9
50	3089	BENNETT HP	HA	1951		1982	6
51	4359	COATES S	CA	1945		1856	
52	5068	BEACH PK	AC	1938		unr	
53	3673	MCNALLY I	AC	1932	11	1962	9
54	3293	VAN GINKEL JP	NE	1930		1868	
55	3253	MARNER G	WE	1922	11	1956	
56	3162	SPILLER PS	HP	1922		1849	15
57	5067	DAVIES RE	PT	1917		1769*	
58	4320	PHILLIPS J	WE	1914		1938	
59	4393	DUNN AS	PT	1912		1757	
60	4333	JACKSON LR	WE	1910		1785	
61	3657	MARTIN-BUSS B	WT	1899	6	unr	
62	4691	LATIMER B	AC	1898		1915*	
63	3461	MULLAN AB	WE	1890		1528*	
64	5488	WOJNAR J	WE	1890	11	unr	
65	3037	GIBBONS RE	GA	1889		1993	
66	3845	WINFIELD AW	WE	1889	11	1736	
67	3411	SIMS MT	WE	1885		1759	
68	5486	SILVER D	WE	1883*		unr	
69	5402	SULAIMAN O	AC	1883		1876*	
70	3038	GOFFIN PB	AC	1874		unr	
71	5537	SAKSENA K	AC	1871*		unr	
72	5383	HEREMAIA D	UH	1869*		1705*	
73	3913	GILL G	AC	1864		1938	
74	4740	MACDONALD P	AC	1863		1632	9
75	5127	TRASS R	GA	1856		1881	
76	4176	HUDSON S	CA	1852		1581	
77	5149	MACHINA A	WT	1851	6	1753	
78	3648	MCDONALD JA	WE	1844	11	1860	9
79	3434	HURLEY A	UH	1843		unr	
80	5431	CORKER K		1842*		unr	
81	3698	BLAXALL CS	HP	1831		1767	9
82	3632	JOHNSON Q	CA	1830		1766	9
83	3550	VETHARANIAM PAR	WA	1829		1904	
84	3079	HOSKYN GA	WA	1823		1661	
85	4467	MISTRY P	NS	1819	21	2007	15
86	3032	LYNN KW	HA	1811		1857	9
87	5482	WELLS C	NS	1810	10	1826*	6
88	3414	SCHWASS MP	WE	1809		1893	
89	5268	j WANG PC	AC	1803	11	1991	15
90	4708	VAN DEN HEUVEL A	NS	1799	10	unr	
91	3554	SINTON PJ	OT	1792		1812	
92	4953	HENDERSON M	AC	1789		1862*	
93	5082	DONALDSON B	CA	1786		1527	
94	3238	CARTER GS	UH	1784		1752	
95	3105	SIMS IM		1784		1675*	

96	3027	POWER PW	NS	1779*	1710*		
97	3665	GOODHUE N	WE	1776	11	1869	9
98	4068	MACKWAY-JONES RA	IN	1766		1722	
99	3993	HAIR PI	NS	1763	21	1711	
100	5484	RULIK O	CA	1763*		1395*	
101	4997	HUGGINS J	AC	1761		unr	
102	4656	TIDEY SB	WT	1760		1687	
103	3028	HAASE GG	OT	1756		1719	2
104	3232	RAWNSLEY LD	HP	1753		1722	
105	5520	BLOOR P	WE	1751*		unr	
106	5197	GUNN NJ	NS	1750	10	1813	6
107	3259	BOOTH AJ	HP	1749	11	1509	
108	4885	GODFREY P	WT	1748	13	1821	9
109	4931	MACLEOD S	HA	1746		1793	
110	4796	GOUDIE D	WT	1744		1598*	
111	5575	WATTS D	OT	1744*	5	1736	13
112	3073	WILLIAMS BM	AC	1743		1736	15
113	3903	LAMBOURNE GJ	OT	1741		1705	
114	4798	j HARTIGAN C	WT	1739	6	1500	9
115	5495	SHORT A	WA	1738*		1597*	8
116	3412	ALDRIDGE AL	WE	1737		1861	
117	5502	MILENKOVIC A	CA	1733*		unr	
118	5070	EADE D		1732		1678	6
119	4361	FRASER C	CA	1731		1746	
120	5371	WOOD DA	CA	1729	11	1750	
121	4575	TAUPAKI A		1728		1683	
122	3633	BEESLEY RA	AC	1723		1731	
123	3218	BRIMBLE MT	WT	1722	11	1680	
124	3339	TAYLOR R	HP	1721		1715	6
125	3635	GOODWILLIE C	CA	1719		1694*	
126	5130	BOARDMAN JF	WE	1714	11	1787	9
127	5238	VITAL H	PT	1714	11	1713	9
128	4196	WARD K	AC	1712		1717*	
129	3345	SMITH VJ	WT	1701	13	1732	
130	5349	j HAN D		1698		1500*	
131	3072	NIJMAN AJ	CA	1692		1730	
132	4966	HALL C	CA	1688		1616	
133	3883	MORROW D	WT	1687		unr	
134	3117	CATER JE	WT	1682		1590	
135	4451	NYBERG M	WE	1680		1773	
136	4493	j HARRIS P	WA	1677		1618	2
137	3433	DAVIES G	CA	1676		1681	
138	3351	DOLEJS DE	GA	1673		1638	
139	4367	ROSSITER PE	HA	1669		unr	
140	4136	KOIA A	WE	1665		1486	
141	3618	EDWARDS RE	WE	1662		1627	
142	3055	FOORD MRR	OT	1662	6	1789	9
143	3927	FORSTER W	CI	1661		1409*	

144	5498	j KHYTKO A	WE	1659*		1370*	
145	3054	GLOISTEIN B	CA	1658	11	1614	8
146	4160	SADLER M	CA	1655		1390	
147	4753	BARLOW A	WE	1653		1557	
148	3368	CALDER RJ	WT	1651	12	1572	
149	3180	FROST EGA	WA	1649		1624	7
150	4833	j SAVAGE P	WE	1646		1662	
151	4466	BURN MR	GA	1643		1816	
152	5490	HAMEED A	WE	1636*		unr	
153	5489	j WOJNAR M	WE	1636	11	1691*	
154	4239	CRUDEN NB	GA	1634		unr	
155	3268	KING PC	WE	1630		1647	
156	4586	LE BROCCQ MJ	NS	1630	10	1717	9
157	4148	EASTERLOW NL	WT	1626	7	1489	
158	3168	BELL DI	WA	1624		1415	7
159	3064	STRACY DM	WE	1620	10	1720	
160	5208	TODD N	UH	1620		1422	
161	4871	GIBSON GM	AC	1614	10	1661*	
162	5506	STEMMER U	CA	1613*		unr	
163	4302	DAVIS JM	GA	1608		1876	
164	5558	ST JOSEPH M	OT	1606	6	1495*	
165	4766	CLARK C	HA	1604		1646	
166	4905	MUNROE DR	NS	1604		1502	
167	5399	SMITH RG	HP	1604*		1590*	
168	5504	j WALLACE A	CA	1604*		959*	
169	3258	HOWARD MI	NS	1603	11	1563	15
170	4704	BAY-PETERSEN O	NP	1598*		unr	
171	4252	HIMONA PJ	BP	1596		1805*	
172	4173	DUFFIELD T	OT	1595		1598	
173	4844	SIMPSON DJW	NS	1594	10	1727	6
174	5487	WEINHOLD N	WE	1593*		unr	
175	4436	COGHINI P	CI	1592		1546	
176	3302	BOJTOR J	HP	1585	10	1559	
177	4859	PLACKIC T		1584		unr	
178	3194	FRANKEL Z	WE	1582		1802	
179	5032	KERRIGAN L	WT	1580	5	unr	
180	3103	MAZUR JJ	CI	1578		1666	
181	3243	CAPPER DS	WE	1575		1675	
182	4692	STEINER M	AC	1573		1703*	
183	4087	BENSON C	CA	1568		unr	
184	4747	PUTT G	IN	1563		unr	
185	5024	TUMAI A	HA	1560		1706	
186	5334	HANNA G	CA	1558		1613*	
187	5403	SUKHOLININ V	AC	1558		1748*	
188	4580	BATCHELOR A	OT	1557	2	1746	9
189	3175	FREEMAN BW	OT	1556		1424*	
190	4234	JOHNS DP	NS	1553	21	1747	15
191	5225	NICHOLSON S	CA	1553		1693	
192	5076	j CHENG H	NS	1549	11	1603	



193	5060	PARTRIDGE D	CA	1548	1447	
194	3965	BENNETT RH	WT	1547	1540	
195	4004	HEPERI DJN	OT	1543	1724	
196	4709	POCOCK GW	GA	1540	1619	6
197	4865	j AH-CHEE ML	AC	1537	1505*	
198	4754	EVANS T	NS	1537	11 1561	6
199	3798	GOLD HR	OT	1536	16 1817	24
200	3056	KAY JB	WE	1536	1451	
201	4903	PAKENHAM J	AC	1535	1633	
202	3962	WILSON C	PT	1534	1574	15
203	4468	DALE CL	NS	1532	unr	
204	4141	PALMER BP	WT	1527	1599	
205	3612	YOUNG P	AC	1527	1536*	
206	5423	LAWS T	GA	1526*	1203*	
207	3929	SOUTHGATE B	WE	1524	1434	
208	4601	VOSS PJ	GA	1522	11 unr	
209	4344	MILLAR BW	GA	1517*	1648	9
210	5047	WRIGHT C	GA	1510	1367*	
211	5559	LAMBERT L	OT	1509*	4 1393	5
212	5587	PLUMPTON D	WT	1508*	6 unr	
213	3227	DRAKE AS	UH	1500	1580	
214	5552	PHILEVA I	AC	1498*	unr	
215	3996	DEVLIN S	NS	1493	1707*	
216	5245	RAMANAKUMAR S	AC	1493	1814*	6
217	4472	WILLIAMS K	HP	1490	1484	6
218	4661	WILSON JC	WA	1490	1413*	9
219	5433	GALEWSKI E	HA	1489*	unr	
220	3328	SNELSON PR	NS	1486	10 1649	6
221	5485	PETROVIC N	CA	1485*	unr	
222	4147	HOOTON BR	PT	1480	1438	
223	3926	REID A	UH	1480	unr	
224	5124	j TRASS C	GA	1479	1520	
225	5410	NEWBOLD A	OT	1474*	1446	14
226	4409	GILMARTIN J	CI	1473	1375*	
227	4182	REID DM	OT	1469	1417	13
228	4651	COOK J	WE	1465	1384	
229	4695	TSEUNG JCO	AC	1465	1371	
230	4938	URBANSKI Z	AS	1460	1565	
231	4677	WHITEHOUSE A	NS	1460	1500*	5
232	4357	KINGSTON ZH	KP	1459	1444	
233	5444	j DOLLIE Q	AC	1458*	unr	
234	4044	MCINTOSH J	OT	1457	1595	6
235	4164	FARRINGTON LB	WE	1455	1634	
236	3862	MILNE DJO	NS	1451	1503	
237	4210	TANGI TJJ	AC	1435	3 unr	
238	4518	JONES A	WT	1434	23 1274*	9
239	5272	HARISH R	WT	1430	12 1308*	
240	3107	PRESTON JN	IN	1424	1277	

241	5182	ROWLAND N	AC	1422	1427*	
242	3974	GILLESPIE JG	WE	1418	1467	
243	5564	MUNDAY S	NS	1417*	10 unr	
244	4935	WIN KS	OT	1415	1365	
245	5405	MARTIN P	AC	1413	unr	
246	5400	ALAFI'APAE W	AC	1411	10 1405*	
247	4480	j CHILVERS C	HP	1410	1360	
248	5397	UTAI R		1409*	1369*	
249	5395	j ALAFI'APAE M	AC	1408	9 1353*	
250	5445	j LOH IML		1407*	unr	
251	4508	STEWART J	WA	1403	1329	
252	3895	BANNISTER C	OT	1400	1418	
253	5333	JACOBS H	NS	1400	1627	9
254	5509	j SHATALIN S		1400*	unr	
255	3901	VAN ZOOMEREN J	OT	1396	1477	
256	3092	MEARS GW	NS	1393	11 1377	6
257	4614	GOECKEL H	GA	1392	1320*	
258	3045	TRUNDLE GE	GA	1391	1446	
259	5342	JEONG CU	AC	1390	10 1358*	
260	4964	DAWES G	CA	1389	1410*	
261	4011	WHITAKER B	AC	1389	1382	
262	4723	POLLARD B	WT	1388	13	1549
263	4071	MCGURK A	IN	1386	1280	
264	5480	MARIC M	NS	1384*	10 1716*	6
265	5522	WELSFORD R	CA	1381*	unr	
266	3357	SPENCER-SMITH PANS		1380	11 1463	5
267	4602	BELL G		1379	1476	
268	5235	j LIN J	WT	1378	13 1340*	
269	4666	MARTIN O	AC	1378	1434	
270	4096	KEELING RL	AS	1377	1500	
271	4751	MOORE J	WE	1373	1445	
272	3816	OTENE EA	AC	1371	11 1406	
273	4730	WONG D	WT	1370	7 1440	
274	3888	NEAL RM	WT	1368	1532	
275	4789	MADDREN W	WA	1365	1377*	
276	3322	BALDWIN PA	NS	1362	1262	
277	4786	RITCHIE A	OT	1362	1393	
278	3902	STONE RG	OT	1362	5 1391	
279	4031	AIDAN A	AC	1358	1318*	
280	5152	COWPERTWAIT P	NS	1354	1441*	
281	4891	GRACE B	UH	1354	1245*	
282	5417	KUCH M	CI	1354*	1629*	
283	5115	BRADDOCK J	UH	1353	unr	
284	4327	ATKINSON J	CA	1351	1502	
285	5222	j WILSON J	WE	1343*	unr	
286	4099	WRIGHT C	CA	1343	11 unr	
287	5492	BAYLISS D	AC	1341*	unr	
288	5071	HROMIC HM	NS	1337	1398	
289	5305	j PEARSON D	CA	1337	1472*	

290	5519	PLACKIC V	WE	1337*	unr		
291	5469	STIERAND R	PT	1337 11	1340*	6	
292	5063	COOZE B	HH	1333	1237		
293	5330	TUAPAWA J		1333*	1659	9	
294	4054	COURTNEY HK	GA	1331 10	1241		
295	5360	j HEREMAIA J	UH	1330*	1570*		
296	5294	BRUCE M	KP	1326*	1237*		
297	4481	CHILVERS M	HP	1322	1384		
298	4679	TIBBLE A	WT	1316	1138*		
299	5512	COSSEY A		1315*	unr		
300	3349	STEWART BK		1315	1411		
301	3796	CLARKSON RD		1314	1306		
302	4889	SWEETSUR P	GA	1311	1623*	9	
303	4564	LANG M	IN	1309	1436		
304	4590	ROWELL T	OT	1309	1585		
305	3288	BOWLER RP	NP	1307	1487		
306	5435	TELFAR M	WE	1307	unr		
307	5424	j ASHRAFI A	WT	1301*	unr		
308	3144	PARLANE LN	GA	1301	1111*		
309	5553	PINDUR E		1301*	unr		
310	4702	PORTER A	PT	1294	unr		
311	5347	j YANG J		1288*	unr		
312	4852	NICOLL A	HP	1286	1308*		
313	5565	j TAN F	WT	1285* 14	1441*	9	
314	3074	MORRISON MK	AC	1283 10	1431		
315	3788	MILLS G	KP	1282	1420		
316	5304	PEARSON G	CA	1281	1210		
317	4406	STREET S	WA	1279	unr		
318	3854	WAGSTAFF GC	NS	1278 9	1442		
319	5436	JIANG C	WT	1272	unr		
320	4058	LOOS R	CA	1272*	1568*		
321	4354	BACKHOUSE C	UH	1266	1318		
322	5493	MAROROA T	AC	1266	unr		
323	5497	POCOCK M	NS	1266* 10	1481*		
324	5228	j PEARCE R	CA	1265	1415*		
325	5387	OSBORNE R	WT	1263 12	1375*		
326	5499	MANIHERA M		1261*	1466*	9	
327	4718	KESELER AJ	AC	1257	1298		
328	4934	TUATINI M	GA	1254*	unr		
329	4314	MILLANO A	PT	1251	1254		
330	4527	MCGOWAN A	KP	1249	1528		
331	4774	EDWARDS C	PT	1248*	unr		
332	5188	FOOTE R	AC	1246	unr		
333	5108	POTINI G		1246*	1559	9	
334	5147	ABSALAM M	AC	1242*	unr		
335	5457	KAY P	CA	1234	1063*		
336	5136	j HALL PJ	OT	1228	1501		
337	5425	FRANCIS J		1227*	unr		
338	5112	GOTHORP THT	GA	1219	1381	15	

339	3304	GREVERS LP	NS	1214 10	1341	6	
340	5345	j LIN H		1214*	1135*		
341	4835	JOHNSON JS		1213	1112*		
342	4980	VARGA S	HP	1212	1284		
343	3431	VAN DER MEY PF	NS	1211 9	1347	5	
344	5437	j WONG D		1211*	unr		
345	4498	CLARK BK	SP	1208	1587		
346	5507	FORT C	CA	1208*	1277*		
347	5491	GOBBI M	WE	1201*	unr		
348	4776	STEVENSON M	CA	1201	1222		
349	5460	DAWSON P	CA	1200*	1098*		
350	4450	FORREST K	WA	1195	unr		
351	3354	GARLAND M	WT	1195	1403		
352	5216	NGUYEN T	UH	1194*	1166*		
353	5035	PRASAD L	WE	1191	1064*		
354	5414	BUTLAND S	AC	1188	1067*		
355	4947	SANGHA DS	WA	1187	unr		
356	5412	RUDKINS L	NS	1186 18	1143		
357	5406	j HODGKINSON BP	NS	1180 7	unr		
358	5408	WONG SY	NS	1180*	1356		
359	3365	WINSOR BM	NS	1178 11	1453	6	
360	3136	BARTOCCI KDF	AC	1177 16	1271*	9	
361	5505	VAN SCHOUTEN J	CA	1173*	1073*		
362	4668	VAN DEN BOSCH K	HP	1172	1398	15	
363	5117	SMITH R	UH	1167	unr		
364	3267	WEBBER CH	UH	1166	1208		
365	4519	ALLPRESS K		1164	1357*		
366	5369	SHEARING S	WT	1164	unr		
367	5453	JONES S	NS	1163*	1270*		
368	4957	WOOD P	AC	1158	1320*		
369	3532	MCRAE JH	PT	1157	1188		
370	5585	BYFORD B	WT	1154* 4	unr		
371	5357	RUSSELL P	PT	1154*	unr		
372	5340	O'NEILL D	WH	1152*	unr		
373	5307	j JEFFREYS M	CA	1149	1276		
374	5196	CLOETE D	NS	1146 9	1348		
375	4742	JUDKINS GL	GA	1146	1456	6	
376	3312	JONES GM	NS	1134 9	1268	5	
377	5413	TERRY L	NS	1126*	1361		
378	5447	j KUHN A	WA	1122	1316*		
379	4780	MAC J	CA	1122	1258		
380	5422	DEVERALL J	CI	1119*	1164*		
381	5451	ENRIQUE G	WT	1117 13	1063*		
382	3187	NEWMAN B	UH	1116	1131		
383	4950	LANG I	IN	1114*	unr		
384	5511	HOUPAPA P	PT	1110*	1171*	4	
385	4690	PAGE A	AC	1110	1161*		
386	5560	MOORE T	OT	1105*	1049*	2	

387	4264	STEPHENS RC	UH	1100	1094*	
388	4598	YORSTON KL	WA	1100	unr	
389	5554	MAYNE A		1098*	1315*	6
390	4768	TE KANI S	HA	1098	1149	
391	5461	GAINES R	CA	1096*	1222*	
392	5426	j BAJWA A	WT	1095	1222*	6
393	5382	CRUMMEY S	CA	1092*	861*	
394	3320	HIPKINS B	AC	1091	1399*	
395	5338	SULLIVAN AG	NS	1091*	1033*	
396	4918	GALLETLY D	OT	1087	1438	
397	5385	BOTES P	WT	1085	unr	
398	5438	j LEE L		1083*	unr	
399	5242	RYLAND J	WA	1082	unr	
400	5116	ORR W	UH	1077	1151*	
401	5030	j WHITEHOUSE RJ	NS	1077* 10	1386	6
402	4308	BOEKHOLT E	UH	1070	1140	
403	3250	RAWNSLEY DC	HP	1068	1175	
404	5503	j QI M	CA	1064*	unr	
405	5562	MCQUEEN D	WA	1061*	unr	
406	4727	ARNOLD R	WT	1058	11	999*
407	5549	j MARTIN D	WA	1058*	unr	
408	3134	CAMERON D	OT	1057	1249	
409	4904	SWEETSUR M	PT	1055*	1370*	9
410	4726	BRITTEN R	WT	1054*	unr	
411	5439	j LUEN M		1049*	unr	
412	5240	BOWDEN P	UH	1048	1238*	
413	5556	KOVACEVIC J		1042*	unr	
414	4916	JACKSON MD	NS	1034	1323	
415	5442	j ASHRAFI DR		1030*	unr	
416	5429	j ASHRAFI D	WT	1027*	unr	
417	5415	j YAO S	NS	1024	9	1236 5
418	5547	j LISSINGTON T		1018*	unr	
419	5548	j CHINNI V		1007*	unr	
420	5570	TULISI N	WT	1000*	6	1156* 8
421	5481	j WHARAM C	NS	974*	unr	
422	5561	PHIPPS M	OT	960*	1202*	
423	5434	VAN LOKVEN P	IN	956*	unr	
424	5459	WINDER S	CA	946*	1305*	
425	5479	j GAO P	WT	944*	1402*	
426	5574	HELLYER M		944*	6	unr
427	5464	j MAGUIRE D	CA	940*	1140*	
428	5239	BRUCKER G	UH	935	969*	
429	5545	j HIPANGO W	WA	932*	unr	
430	4827	COLLINGWOOD G	WT	925	12	1161
431	5569	TAN A	WT	924*	6	1368* 8
432	5494	ALAFAPA M	AC	914*	unr	
433	5446	j CUMMING R	NS	901*	unr	
434	5521	ROSE T	WT	895*	unr	
435	5427	LANE V	AC	889*	unr	

436	5510	j CHANG S		876*	unr	
437	5443	j DOLLIE U	AC	852*	unr	
438	5450	j KUHN T	WA	834	unr	
439	5378	CROSBIE C	WA	833	unr	
440	5462	KLUGE B	CA	830*	1163*	
441	5582	HOWELL N	WT	821*	11	unr
442	5416	EARLKY JK	NS	794	9	1037 5
443	4896	ROUNTHWAITE T	WT	791	12	1005
444	5448	JEFFERIES C	WA	771*	unr	
445	5085	HAXTON D	WA	764	unr	
446	5544	j SENANAYAKE P		760*	unr	
447	5550	j AL-HINDAWI A	WA	750*	unr	
448	5353	j SMITH D	WT	745*	1187*	8
449	5546	j STUART J	WA	745*	unr	
450	5455	j CAI S	NS	735*	935*	
451	5089	HURLEY D	WA	714	unr	
452	5501	GRAY I	CA	709*	unr	
453	5441	j EDMONDS R		699*	unr	
454	5428	j YANG J		694*	unr	
455	5384	OSBORNE E	WT	679	848*	
456	5440	j JEYARAJAH NJ		669*	unr	
457	5376	OLIVER J	WA	486	936*	
458	5586	LEHRKE P	WT	452*	4	unr
459	5449	FLEET N	WA	426	unr	
460	5551	j BLACKMAN D	WA	384*	unr	
461	5470	PEARCE RJ		unr	1983*	
462	5496	WHALEY MG	NS	unr	1930*	
463	3317	PETCH WH	OT	unr	1732	7
464	5589	MORTEN P	HP	unr	1720*	6
465	3204	LARK D	HP	unr	1649	
466	5568	HORSFALL N	EK	unr	1601*	8
467	5517	MCKERRAS R	CA	unr	1527*	
468	5577	SAMUEL M	OT	unr	1451*	
469	5289	NEDELJKOV S		unr	1438*	
470	5080	j ALLEN-URBANSKI	AS	unr	1437	
471	5518	FRAEMOHS P	CA	unr	1402*	
472	5530	BRADLEY E	KP	unr	1356*	
473	5500	MARSH H	KP	unr	1339*	
474	5592	j XU D	HP	unr	1332*	5
475	5531	HACKSHALL N	HA	unr	1329*	
476	5458	HAWES A	CA	unr	1291*	
477	5590	MORTEN P	HP	unr	1275*	6
478	5310	TAIRUA P	HA	unr	1272*	
479	5578	GROFFMAN M	OT	unr	1243*	
480	5471	j GUU J	HA	unr	1243*	
481	5421	O'ROURKE M	KP	unr	1240	
482	5579	KING D	OT	unr	1210*	
483	5472	j MANIKKAM B	HA	unr	1165*	

484	5396	j	OEHLEY M		unr	1147
485	5291		HAN W	HP	unr	1139*
486	4873		HERRING M		unr	1134*
487	5474	j	CHO J	HA	unr	1131*
488	5513	j	PESKIN S	CA	unr	1126*
489	5287	j	WARD J	HA	unr	1078 6
490	5456		JAMES S		unr	1059*
491	5467		GUEVARA J		unr	1026*
492	5536	j	SINGH N	HA	unr	1013* 6
493	5473	j	COON J	HA	unr	1012*
494	5533	j	PHILLIPS C	HA	unr	1012* 5
495	5593	j	FENG B	HP	unr	997* 6
496	5483		RILEY J	NS	unr	997*
497	5538		WELLS D	CA	unr	995*
498	5286	j	DARCH C		unr	990
499	5543	j	KELTON W	HA	unr	981*
500	5288	j	JUDKINS T		unr	966
501	5475	j	MCKAY I	HA	unr	955*
502	5588		POCOCK J	HP	unr	942* 6
503	5532	j	ROBERTSON B	HA	unr	935*
504	5534	j	PRIEST D	HA	unr	921*
505	5576		ROY C	OT	unr	905*
506	5514	j	JONES C	CA	unr	847*
507	5542	j	WELLS M	HA	unr	753*
508	5476	j	HOLLAND M		unr	739*
509	5591	j	GRINTER J	HP	unr	727* 6
510	5535	j	FISHER B	HA	unr	655*
511	5516		MILDON G	CA	unr	615*
512	5477	j	BRETHERTON R	HA	unr	570*

### 2001 PAPATOETOE RAPID 30-30

Kindly Sponsored by Li'l Abner's Takeaways, 320 Gt South Rd, Papatoetoe

**SUNDAY 26 AUGUST 2001**

Venue: Papatoetoe RSA Bowling Club, 84 Cambridge Tce, Papatoetoe

**Group 1 1<sup>st</sup> \$300 2<sup>nd</sup> \$150**

**Group 2 1<sup>st</sup> \$120 2<sup>nd</sup> \$80**

**Groups 3+ 1<sup>st</sup> \$100 2<sup>nd</sup> \$60**

*!At least 2 players per group win a prize!*

*Format: 6 player round robin in groups of 6 similar rated opponents*

**!Spot Prizes !Spot Prizes! Spot Prizes! Entry Fee \$30**

Send Entries To: Mr John McRae, 34 Gifford Rd, Papatoetoe Ph (09)278 4520

## NEW ZEALAND CHESS FEDERATION COMBINED (Standard & Rapid) RATING LIST 1 May 2001

Printing courtesy of the Information Systems Department  
Manukau Institute of Technology

### Tournaments Rated this Period

#### Standard Rated

Otago Easter 2000	OT	21-04-00
NZ Junior Championship	WA	06-06-00
Otago Championship Leg 2 A	OT	21-06-00
Otago Championship Leg 2 B	OT	21-06-00
Wanganui CC Chp A	WA	31-08-00
Wanganui CC Chp A Reserve	WA	31-08-00
Wanganui CC Chp B Reserve	WA	31-08-00
North Shore CC Chp A	NS	15-11-00
North Shore CC Chp B	NS	15-11-00
North Shore CC Chp C	NS	15-11-00
Waitemata Club Championship	WT	30-11-00
Waitemata Reserve Board	WT	30-11-00
NZ Chess Championship	WT	09-01-01
NZ Major Open	WT	09-01-01
Waitemata Summer Cup	WT	08-03-01
Waitemata Summer Cup Under-400	WT	08-03-01
Otago Easter Open	OT	16-04-01

#### Rapid Rated

Otago Winter Rapid	OT	17-07-99
Otago Spring Rapid	OT	04-09-99
Otago Round Robin Rapid A	OT	13-11-99
Otago Round Robin Rapid B	OT	13-11-99
Otago Round Robin Rapid C	OT	13-11-99
Otago Round Robin Rapid D	OT	13-11-99
Otago Round Robin Rapid E	OT	13-11-99
Otago Summer Rapid	OT	18-12-99
Otago Club Champs A Prelim	OT	22-04-00
Otago Club Champs B Prelim	OT	22-04-00
Otago Club Champs Leg 3 A	OT	30-08-00
Otago Club Champs Leg 3 B	OT	30-08-00
Otago Spring Rapid	OT	16-09-00
Otago Club Champs Leg 4	OT	01-11-00
North Shore CC Rapid Chp 4th Leg	NS	29-11-00

Otago Club Champs Leg 5	OT	20-12-00
Wanganui Club Championship A	WA	31-12-00
Wanganui Club Championship B	WA	31-12-00
NZ Rapid Chp	WT	11-01-01

### Abbreviations

The following abbreviations are used for clubs currently affiliated to the Federation:

AC	Auckland	KP	Kapiti
AS	Ashburton	NP	New Plymouth
CA	Canterbury	NS	North Shore
EK	Eastern Knights	OT	Otago
GA	Gambit	PT	Papatoetoe
HA	Hamilton	UH	Upper Hutt
HH	Hastings-Havelock North	WA	Wanganui
HP	Howick-Pakuranga	WE	Wellington
IN	Invercargill	WT	Waitemata

## South Island Rapid Chess Championships

The *Otago Chess Club (Inc)* invites entries for the **2001 South Island Rapid Chess Championships**

**Date** Saturday 29 September, 2001

**Venue** Otago Chess Club, 7 Maitland Street, Dunedin

**Format** 6 Round Swiss

**Time Control** 30 minutes per player per game

**Entry Fees** (NZCF Registered Players, includes NZCF Tournament Levy)

**Adult \$30, Junior/Unwaged \$15**

**Further Enquiries** Duncan Watts (Secretary, Otago Chess Club)

Phone (03) 4775226  
e-mail [watts.duncan@lycos.com](mailto:watts.duncan@lycos.com)

## New Zealand News

By Bob Smith

**Wanganui:**  
Milan Palevich has taken out the River City Realty Cup for the summer, Handicap Tourney by a half point margin.

Palevich recorded 9 wins, 1 draw and 1 loss which added to his handicap score of two points gave him a winning total of 11.5 points.

Michael Freeman took second place with 11 points. He had 11 straight wins but could not quite overhaul Palevich to whom he conceded two handicap points.

The award for the biggest upset went to Dan Hurley for his win over Denis McQueen. There were six upset wins and 10 upset draws. There were three withdrawals from the original field of 24.

**Other Placings:**  
Ahmed Al-Hindawi, David Bell, Kelly Forrest. Waata Hipango, Joe Ryland, Allan Short, Jeffrey Stuart, Prince Vetharanim 10.5 points; Dan Hurley 10 points; Gordon Hoskyn, Bill Maddren, Barry Williams 9.5 points; Ivan De Farias, Ted Frost, Graham Kane, Kevin Yorston 9 points; Andrew kuhn 8.5 points; Thomas Kuhn 7.5 points, McQueen 7 points.

**Howick-Pakuranga:**  
In the Parkinson Cup the club trialed a Fischer time control of 20 minutes each player plus ten seconds a move. The tournament was run as a double round robin in two groups. The 'A' group was won by Ken Williams with 10/12, followed by Paul Morten on 8.5, and Jim Benson 7.5.

'B' group honours were shared by Peter Morten and Kees van den Bosch with 8/12, followed by Steve Varga on 5.

The club Handicap Tournament (material concessions according to ratings) was a 6 round swiss with a time control of 40 minutes each plus 20 seconds per move. Rhys Starr was a convincing winner with 6 straight wins, followed by Paul Morten (4.5), and Ken Williams and David Xu (4). The Fairhurst Pawn Tournament was also a 6-round swiss, with a time control of 60 minutes each with 30 seconds added after each move. Graham Banks, Paul Morten and Rhys Starr tied for first with 5/6. Waitemata Chess Club:

The Summer Cup (a 6-round swiss with a time control of 35 in 90 plus 20 minutes to finish) was won by Bob Smith with 5.5/6. Runner-up was Barry Martin-Buss (4), followed by Viv Smith and Rob Calder (3.5).

The concurrent Under 400 Tournament was won jointly by David Plumpton and Alf Jones (5/6). Third equal were Bruce Pollard, Roy Harish and John Lin (4). The club's Half Hour Tournament was won by defending champion Bob Smith (6/6), from Paul Godfrey (5) and Barry Martin-Buss, Colm Hartigan and Mark Brimble (4).

The 90-90 Tournament (45 moves in 90 minutes plus 15 minutes sudden death) went to Bob Smith (5/5). Runner-up was Paul Godfrey (4), with Mark Brimble and Victor Portougal 3<sup>rd</sup> equal (3.5).

Cont page 29

## Overseas News

By Peter Stuart

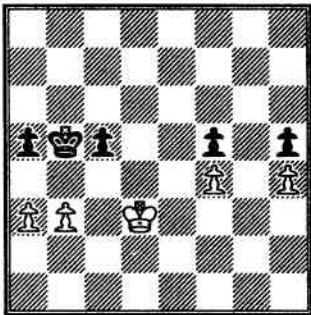
## FIDE rapid world cup, Cannes

This event began with two preliminary groups of eight, with four players from each qualifying for quarter-final knock-out matches. The semi-finalists were Gary Kasparov, Evgeny Bareev, Alexander Grischuk and Judit Polgar. Grischuk drew the first two games against Kasparov but lost both tie-break games while Bareev beat Polgar 1½-½ in the other match.

The first game of the final match was drawn. Here is the second game:

Kasparov, G (2849) - Bareev, E (2709)  
[C09] French Def, Tarrasch Var.

1.e4 e6 2.d4 d5 3.♗d2 c5 4.♗g3 c6 5.exd5 exd5 6.♖b5 ♖d6 7.dxc5 ♗xc5 8.0-0 ♗ge7 9.♗b3 ♖d6 10.♗e1 0-0 11.♗g5 h6 12.♗h4 ♗g4 13.♗g3 a6 14.♗e2 ♗e8 15.♗f4 ♗xe2 16.♗xe2 ♗d7 17.♗xd6 ♗xd6 18.♗e1 ♗f8 19.♗c3 ♗xd4 20.♗xd4 ♗c6 21.♗ae1 ♗b4 22.♗xb4+ ♗xb4 23.♗f1 ♗xe2 24.♗xe2 ♗e8+ 25.♗d2 ♗xe1 26.♗xel ♗e7 27.♗d2 g6 28.a3 ♗c6 29.♗xc6+ bxc6 30.c4 ♗d6 31.♗d3 a5 32.b3 ♗c5 33.cxd5 ♗xd5 34.♗c3 h5 35.h4 f6 36.♗d3 g5 37.g3 g4 38.g4 h5 39.f3 ♗e5 40.♗e3 c5 41.f4+ ♗d6 42.♗d2 ♗c6 43.♗c3 ♗b5 44.♗d3



With just two seconds to reach move 50 Bareev gave up but the position is drawn:

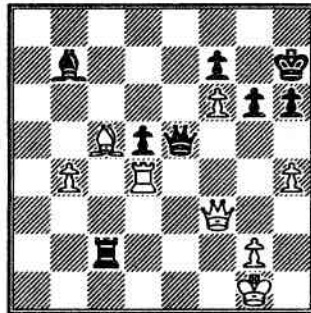
44... ♗c6 45.♗c4 ♗d6 46.♗b5 ♗d5 47.♗xa5

47.a4 ♗e4 48.♗xc5 ♗xf4 49.b4 axb4 50.♗xb4 ♗g4 =

47...♗e4 48.♗b6 ♗xf4 49.a4 ♗g3 50.a5 f4 51.a6 f3 52.a7 f2 53.a8 ♗f1 ♗ =.

## Adams (White) v Polgar

The following position occurred after Black's 41st move in the quarter-final between Michael Adams (white) and Judit Polgar.



White is okay after either 42.♗d1 or 42.♗f4

but instead played

42.h5??

when there followed

42...♗c1+??

Of course, 42...♗xc5 wins a piece.

43.♗f2??

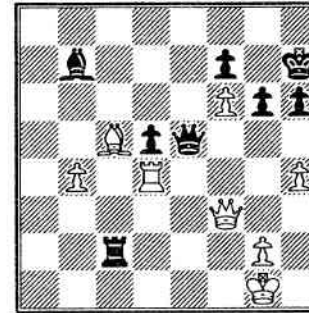
43.♗d1 is equal.

43...♗e1mate!

## Bauer - Bologan

[D55] Queen's Gambit, Old Lasker Var.

1.d4 ♗f6 2.c4 e6 3.♗f3 d5 4.♗c3 ♗e7 5.♗g5 h6 6.♗xf6 ♗xf6 7.e3 0?0 8.♗c1 ♗c6 9.a3 dxc4 10.♗xc4 e5 11.d5 ♗e7 12.♗e4 ♗g6 13.♗a2 ♗e7 14.0?0 ♗h8 15.♗b3 f5 16.♗c5 ♗d6 17.♗b1 ♗f6 18.♗f1 b6 19.♗e6 ♗xe6 20.dxe6 e4 21.♗d4 ♗ae8 22.♗b5 ♗h4 23.♗ed1 ♗g5 24.g3 ♗f3+ 25.♗g2 ♗h5 26.h4



26...♗xg3! 27.f3g3 ♗hx4+! 28.g4h4 ♗f3+ 29.♗h2 ♗f2+ 30.♗h1 ♗hx4+ 31.♗g1 ♗g3+ 32.♗f1

32.♗h1 ♗h3+ 33.♗g1 ♗f6 34.♗f2 ♗g6?+

32...f4 33.♗xe4 fxe3+ 34.♗e2 ♗f2+ 35.♗d3 e2+ 36.♗c4 exd1 ♗ 37.♗xd1 ♗e5 38.♗c3 ♗xb2 39.♗d7 b5+ 40.♗d3 ♗g3+ 0-1.

## Bauer - Grischuk

[D31] Queen's Gambit, Semi-Slav Def.

1.d4 d5 2.c4 e6 3.♗c3 c6 4.e3 f5 5.♗d3 ♗f6 6.♗c2 a6 7.♗ge2 ♖d6 8.f3 00 9.0-0 b6 10.♗d2 ♗c7 11.h3 c5 12.dxc5 bxc5 13.♗a4 ♗c6 14.♗ac1 ♖d7 15.cxd5 ♗xd5 16.♗c4 ♗e5 17.♗xd5 exd5 18.♗f4 ♗b5 19.♗fd1 ♗f7 20.♗e1 d4 21.♗b6 ♗ae8 22.b4 ♗xf3+!

22...♗xf3+ 23.gxf3 ♗xf4 24.exf4 ♗e2 25.♗b3 c4 and 26...♗g6+. 0-1.

## Zurich

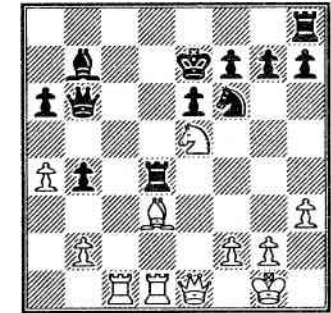
A rapid (25-minute) event held to celebrate Viktor Korchnoi's 70th birthday (23 March) was won by Vladimir Kramnik who beat Gary Kasparov 1½-½ in the final.

Kasparov won one preliminary group with 4½/5, followed by Jeroen Piket 4, Nigel Short and Wolfgang Unzicker 2. Kramnik won the other group with 3½ while Boris Spassky took second place on 3, then Peter Svidler and Korchnoi on 2½. En route to the final Kramnik beat Unzicker and Piket (both 1½-½) while Kasparov defeated Korchnoi and Short (also both 1½-½).

## Kramnik - Kasparov

[D26] Queen's Gambit Acc.

1.d4 ♗f6 2.c4 e6 3.♗f3 d5 4.♗c3 dxc4 5.e3 a6 6.♗xc4 b5 7.♗d3 c5 8.a4 b4 9.♗e4 ♗bd7 10.♗xf6+ ♗xf6 11.0?0 ♗b7 12.dxc5 ♗xc5 13.♗e2 ♗d5 14.♗d1 ♗h5 15.h3 ♗d8 16.♗d4 ♗d5 17.♗f3 ♗e7 18.e4! ♗xe4 19.♗e3 ♗xe3 20.♗xe3 ♗c5 21.♗e1 ♗f6 22.♗ac1 ♗b6 23.♗e5 ♗d4?



24.♗xa6! ♗xd1 25.♗xd1 ♗xa6 26.♗xb4+ ♗xb4 27.♗c6+ ♗f8 28.♗d8+ ♗e8 29.♗xb4 ♗e2 30.f3 h5 31.b3 ♗h6 32.♗f2 ♗g6 33.♗xe2 ♗xg2+ 34.♗d3 ♗g3 35.a5 ♗xf3+ 36.♗c4 1-0.

## Dos Hermanas

In a close finish Alexei Dreev (RUS) and Ilya Smirin (ISR) tied for first place with 5½/9 in an all-GM category 16 event. Sharing third place on 5 points were Almasi (HUN), Azmaiparashvili (GEO), Illescas (ESP) and Vallejo (ESP). Then came: 7 M.Gurevich (BEL) 4½; 8-9 Radjabov (AZE) & I.Sokolov (BIH) 4; 10 Krasenkov (POL) 1½.



## Krasenkov - Radjabov

[E90] King's Indian Dref., Classical Sys.

1. f3 f6 2. d4 g6 3. c4 g7 4. e3 0?0 5. e4 d6  
6. h3 e5 7. d5 b6d7 8. g5 h6 9. e3 e5 10. d2  
a5 11. a3 e8 12. b4 axb4 13. axb4 xxa1  
14. xxa1 d7 15. c5 f5 16. e4 f4 17. e1 dxc5  
18. bxc5 dxc5 19. a3 b6 20. dxc5 bxc5 21. a5  
f3 22. g3 e7 23. d3 h5 24. h4 h6 25. a4 d6  
26. dxc5 g5 27. e6 dxe6 28. dxe6 dxc4 29. dxc4  
gxh4 30. xhx4 hb8 31. a2 b2 32. a4

The king cannot escape on the kingside: 32. f1  
e2 33. g1 e1+ 34. h2 xhx4+! 35. gxh4 f4+  
36. h3 h1 mate.

32... e2+ 33. d1 33. f1 d2 34. d1 c5  
35. e7+ g7 36. e8d+ f8 37. h2 c2! 38. a1  
xhx4 and mate follows.

33... xxf2 34. xhx5 f1+ 35. c2 c5+ 36. h3  
e3+ 37. h4 d4+ 38. h3

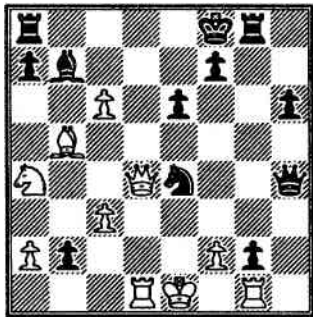
38... b6+ 39. c4 c1+ and mate is again not  
long in coming.

38... d3+ 39. h4 d2+ 40. c5 c1+ 0-1.

## Sokolov - Dreev

[D43] Queen's Gambit, Botvinnik Var.

1. d4 d5 2. e4 c6 3. f3 f6 4. e3 e6 5. g5 h6  
6. h4 dxc4 7. e4 g5 8. g3 b5 9. e2 b7 10. h4  
b4 11. a4 dxe4 12. e5 g8 13. c2 c5 14. dxc4  
g4 15. b5+ d7 16. dxc5 b3 17. d3 gxf3 18. c6  
b4+ 19. c3 dxc3+ 20. bxc3 fxf2 21. g1 b2  
22. d1 xhx4 23. xxd7+ f8 24. d4



24... b1! 25. xxb1 d8 26. cxb7 xxd4 27. b8+  
d8 28. xxa7 h2 29. e2 d2+ 30. e3 g3+!

## 31. dxe4 g4+ 0-1.

## Warsaw

The European Women's Championship title  
was won by Almira Skripchenko-Lautier on  
tie-break from WGMs Kovalevskaya (RUS),  
Arakhamia (GEO), Galliamova (RUS), Foisor  
(RUM), Bojkovic (YUG) and Stepovaya (RUS).  
All scored 8 points from 11 games played with  
the controversial new FIDE (Fischer) time  
control of 40 moves in 75 minutes plus 15  
minute guillotine with 30 seconds extra time per  
move.

## Essen

The category 15 all-GM Julian Borowski  
tournament was won by Uzbekistan's 19-year  
old Rustam Kazimdzhanov with 6½/9. In a tie  
for second place were Christopher Lutz (GER)  
and Emil Sutovsky (ISR) on 6 points and then  
came: 4-5 Dautov (GER) & Romanishin (UKR)  
5; 6 Yusupov (GER) 4½; 7 M. Gurevich (BEL)  
4; 8 Bischoff (GER) 3½; 9 Nijboer (NED) 3; 10  
Smagin (RUS) 1½.

## Sutovsky - Lutz

[B30] Sicilian Def., Rossolimo Var.

1. e4 c5 2. f3 e6 3. d3 d6 4. g3 d7 5. h4 d5  
6. h5 e5 7. h6 dxe4 8. dxe4 xxd1+ 9. fxd1 g4  
10. e2 0?0?0+ 11. e1 gxh6 12. c3 f5 13. dxc6  
dxc6 14. xhx6 fxe4 15. d5 dxe2 16. dxe2 f5  
17. h1

17. dxc6+ bxc6 18. f7 e3 19. dxc8 (19. dxd8  
dxd8 20. g4 d6 21. f3 e4! is similar) 19... xhx8  
20. g4 d6 21. f3 e4 22. dxe3 exf3 23. dxf3 f8+  
and Black wins a pawn or pins the white knight.  
Possibly 17. h5 is better.

17... e3 18. f7 exf2! 19. dxf2 dxc3 20. dxc3  
dxc3+ 21. d4?!

21. h2 d7 22. f1 c7 23. d6 g5 24. f7  
g7 25. d6 effectively repeats the position if  
Black has nothing better than 25... g5.

21... d7 22. f1

22. d6 g2.

22... e7! 23. d6

23. dxe5 d5 24. f7 d6+ 25. h3 d3+ 26. h2  
d4?+.

## 23... g2 24. a3 d6+?

Missing a forced win by 24... h2+ 25. g5 d6  
26. f6 (26. d4 g6 mate) 26... g2+ 27. d4  
dxc4+ 28. dxc4 xxf6?+.

## 25. h3 g5 26. f5?

Now White misses his best chance: 26. f7 is  
unclear.

26... d3+ 27. h2 g3 28. f7 d4 29. f2  
h3+ 30. g1 d3+ 31. f1 h1+ 32. e2 xxa1  
33. d6+ d7 34. e4 g2 35. dxc5+ c6 36. d3  
xf2+ 37. dxf2 d6 0-1.

## Havana

Spain's 18-year old GM Francisco Vallejo  
scored a comfortable victory with an undefeated  
8½/12 in the 36th Capablanca Memorial  
tournament. Second, 1½ points behind, was  
Icelandic GM Hannes Stefansson and then came  
GM Andersson (SWE), IM Dominguez (CUB)  
and GM Luther (GER) on 6½. GM Tony Miles  
(ENG) was joined on 6 points by GM Bruzon  
(CUB) and GM Hauchard (FRA).

## NZ News From page 25

The Five Minute Championship saw a  
play-off between Bob Smith and Barry  
Martin-Buss, who both scored 8.5/10 in the  
six-player double round robin final. Smith  
defended his title by winning the play-off  
2-0. Other final scores: Martin-Buss (8.5)  
2; P. Godfrey, V. Portugal (5) 3=; D.  
Plumpton(3) 5, B. Pollard(0).

The Reserve Lightning Championship  
went to Eleanora Mikhailik (9.5/10). Viv  
Smith was runner-up with 8.5, followed by  
Benny Jones and Clara Portugal on 6.

## Rogers Wins Asean Championship

Australasia's top Grandmaster Ian Rogers  
has won the first Asean International  
Chess Championship in Brunei.  
Rogers scored 7.5/9 in the event, held  
from 29 July to 5 August.

Other scores:

Juswanto (Ind), Antonio (Phi) (7) 2-3;  
Nguyen Thanh Son (Vie), Boricsek (Hun),  
Senador (Phi) (6.5) 4-6;  
Villamayor (Phi), Nguyen Ahn Dung  
(Vie), Megaranto (Ind), Sitanggang (Ind),  
Ginting (Ind), Irwanto (Ind), Mariano  
(Phi), Chuah (Mas) (6) 7-14 .... Other  
Australian scores : Tim Reilly 5.5,  
Danny Dwyer 4.5, Cathy Rogers 4.

Across the Tasman there is a proposal for  
the publication of regular lists of the top  
players in different age groups:  
Something that could be adopted here?

Some might recognise the following Aus-  
sies, who would currently head their dec-  
ades:

Over 90 Prof Bernard Neumann (ACT)  
1652

Over 80 Lloyd Fell (NSW) 1850

Over 70 Phil Viner (NSW) 2152

Over 60 Fred Flatow (NSW) 2302

Over 50 Naum Kagan (VIC) 2383

Over 40 Ian Rogers (NSW) 2571

As a matter of interest, the average age of  
the top eight players on Australia's August  
rating list is over 40. The average age of  
the top eight on the July FIDE list is under  
30. At least three of the top eight in New  
Zealand are past the big 40.  
Perhaps Australasians have more staying  
power?

## Obituary - Chas Ward

The death occurred in Wanganui of Wanganui Chess Club patron and life member Chas Ward on 8th May 2001 at the age of 85 years.

A chess player for 60 years he joined the Wanganui Chess Club shortly after arriving in the city, in 1974.

A strong B grade player with a top rating of 1445, he shared two B game club titles, coming first equal with John Gibb in 1985, and first equal with Bernard Nicholson in 1990.

A regular competitor in all Wanganui based tournaments, Chas numbered amongst his wins, a win against South Island Champion Tom Van Dyke in a simul and a win against over 1800 player Andrew Sangster in the 1984 North Island Championship.

Chas played 30 representative games for Wanganui at an average of over 50% and to show that he was not just a player, served as Wanganui Club President from 1984—1992.

Earlier in his career in the 1960's Chas played for the Ashburton Chess Club which bestowed life membership on him.

Perhaps a little known fact is that when Ashburton hosted the South Island Championship, Chas was the Tournament Director.

Ashburton held regular inter-club contests with Christchurch, Christchurch University, Lincoln College, Leeston and Timaru Chess Clubs and Chas who usually

played mid-field, was on one occasion promoted to top board against Lincoln College and to his surprise and delight drew both games.

A keen correspondence player since the 1950's he bowed out on a winning note, taking out Trophy Tourney Grade Four in 1998—1999.

And so we say farewell to a quiet man, a humble man, a loyal man. Chas Ward was all of these and much more. He will be missed on the chess scene.

## Ward, C - Austin, K

NZ Congress, 1994

1. c4 Nf6 2. Nc3 Nc6 3. Nf3 e6 4. d3 Bb4 5. Bc2 0-0 6. e4 c6 7. Be2 d6 8. 0-0 e5 9. c3 Bc5 10. Qc1 Bg4 11. h3 Bc7 12. Nc4 Nd4 13. Nxd4 Bxd4 14. Nc3 Re8 15. Be3 Qc8 16. Kh2 Re6 17. Bxd4 exd4 18. Nb1 c6 19. f4 g6 20. Qe1 Qb8 21. Qg3 d5 22. axd5 cxd5 23. e5 Ne8 24. Bf3 Bc6 25. Nd2 Ng7 26. Bg4 Re7 27. Nb3 Qa7 28. Qf2 Ne6 29. Bxe6 fxe6 30. Nxd4 Bb5 31. Nxb5 Qxf2 32. Rxf2 axb5 33. Rc1 Rf7 34. h4 h5 35. g3 Rc4 36. Rf2 Rd4 37. Rc8+ Kg7 38. R1c3 b4 39. axb4 Rxb4 40. Rc2 Rb3 41. R8c3 Rb6 42. Rc7 Rb3 43. Rxf7+ Kxf7 44. Rd2 d4 45. Kg2 Ke7 46. Kf3 Kd7 47. Ke4 Rb4 48. Rc2 b5 49. Rg2 Kc6 50. Rc2+ Kb7 51. Kf3 Rb3 52. Rd2 Kb6 53. g4 Kc5 54. gxh5 gxh5 55. Ke4 Rb4 56. f5 exf5+ 57. Kxf5 Kc5 58. e6 Rc4 59. Re2 Rc8 60. Re5+ Kc6 61. e7 Kd7 62. Kf6 Re8 63. Rc5+ Kc7 64. Kf7 Rh8 65. e8 Q Rx e8 66. Kxe8 Kb6 67. Rxf5 Kc5 68. Rc5 Kc4 69. h5 b4 70. Rxd4 Kb3 71. h6 Kxb2 72. Rxb4+ Kc3 73. h7 Kxc6 74. h8 QKd2 75. Qd4+ 1-0

## Affiliated clubs

Clubs are requested to advise NZ Chess of any changes in details given below.

Ashburton PO Box 204, Ashburton. Meets Monday 7.15pm (Feb-Oct), the Admin Building, Ashburton Hospital, Elizabeth St. Contact, Ken Pow (03) 308-3655.  
 Auckland Chess Centre Meets Monday 7.30 & Thursday (social) 7.30pm, 17 Cromwell St, Mt Eden, Auckland 1003. Tel (09)630-2042 clubroom.  
 Contact, Bruce Wheeler (09)623-0109.  
 Canterbury, PO Box 25-242, Christchurch. Meets Wednesday, 7.30pm., 227 Bealey Avenue; tel (03)366-3935 clubroom. Pres, Gavin Dawes (03)352-4851.  
 Eastern Knights, Gisborne, meet Tuesday evenings. Contact, Genesis Potini (06) 868-1280.  
 Gambit Sec, Ted Frost, 103 Koromiko Rd, Gonville, Wanganui. Tel (06) 347-6098.  
 Hamilton Wed, 7.30pm, St Pauls Collegiate School. Inquiries Gary Judkins (07)855-5392.  
 Hastings-Havelock North P.O. Box 184, Hastings. Wed, 7.30 pm, Library, Havelock N High School, Te Mata Rd. Sec, Chris Smith (06)877-4583.  
 Howick-Pakuranga Tuesday 7.45pm (juniors 6.30-7.30), St John Ambulance Hall, Howick-Pakuranga Highway, Highland Park. Sec, Kees van den Bosch (09)521-5828.  
 Invercargill Wednesday, 8pm, staff room, South School, Ness St. Contact, John Preston (03)216-4920.  
 Kapiti Wednesday, 7.30pm, Salvation Army Hall, Bluegum Road, Paraparaumu Beach. Contact, Guy Burns (04)904-2002.  
 New Plymouth 11 Gilbert St, New Plymouth. Tuesdays, 7.30pm. Pres, E Tuffery. Contact, Alan Jury, sec, 06 757-9090.  
 North Shore P.O. Box 33-587, Takapuna, Auckland 9. Wednesday 7.30pm, Northcote Community Centre, cnr College Rd/

Ernie Mays St. Club captain, Peter Stuart (09)445-6377.

Otago 7 Maitland St, Dunedin. Monday 7.30pm (social chess only, coaching at 7pm), Wednesday 7.30pm. Contacts: Graham (president) (03)453-6472, Duncan Watts (secretary) (03)477-5226.  
 Papatoetoe Wednesday 7.30pm Papatoetoe RSA Bowling Club, Cambridge Tce, Papatoetoe. Postal address: c/- Katrine Metge, 21 Cambridge Tce, Papatoetoe. Contact John McRae 278-4520, Katrine Metge 278-7173.  
 Upper Hutt Monday 7.30pm, Hapai Club, 879 Fergusson Drive. Sec, Roger Smith (04)528-2721.  
 Waitemata Thursday 7.45pm, Kelston Comm Centre, cnr Great North Rd and Awaroa Rd, Kelston; jun 6.15-7.15, Mondays, schooldays. Postal address: PO Box 21478, Henderson, Auckland 1008. Contact Bob or Viv Smith 817-2664; email: bobviv@actrix.gen.nz  
 Wanganui Mondays 7pm, 1st floor, Commercial Club, St Hill St. Pres, Gordon Hosking, 7 Pehi St (06)343-6101; sec, K Yorston, 5 Mitchell St (06)343-7166.  
 Wellington (now merged with Civic) Tuesday 7.30pm, Museum Room, Turnbull House, Bowen Street, Wellington 1. Contact, Alan Aldridge (04) 477-4874.  
 Associate members  
 Gisborne, 4/26 Harris St, Gisborne. M.P. Grieve (06)863-0101.  
 NZ Correspondence Chess Assn, P.O. Box 3278, Wellington. Sec, J W (Sandy) Maxwell, (04)237-4753.  
 District Associations  
 Auckland Chess Assn, Sec, Kees van den Bosch, 61A St Johns Road, Auckland 1005 (09)521-5828.  
 Wellington District Chess Assn Inc,