

NEW ZEALAND CHESS SUPPLIES

P.O.Box 42-090 Wainuiomata
Phone (04)564-8578 Fax (04)564-8578
Email: chess.chesssupply@xtra.co.nz

Stockists of the widest selection
of modern chess literature in Australasia.

Chess sets, boards, clocks, stationery and all playing equipment.
Distributors of all leading brands of chess computers and software.

Send S.A.E. for brochure and catalogue (state your interest).

PLASTIC CHESSMEN 'STAUNTON' STYLE - CLUB/TOURNAMENT STANDARD

90mm King, solid, extra weighted, wide felt base (ivory & black matt finish)	\$ 28.00
95mm King, solid, weighted, felt base (black & white semi-gloss finish)	\$ 17.50
98mm King solid, weighted, felt base (black & white matt finish)	\$ 24.50
Plastic container with clip tight lid for above sets	\$ 8.00

FOLDING CHESSBOARDS - CLUB/TOURNAMENT STANDARD

480 x 480mm thick cardboard (green and lemon)	\$ 6.00
450 x 450 mm thick vinyl (dark brown and off white)	\$ 19.50

VINYL CHESSBOARDS - CLUB/TOURNAMENT STANDARD

450 x 470 mm roll-up mat type, algebraic symbols at borders to assist move recognition (green and white)	\$ 7.50
440 x 440mm semi-flex and non-folding, algebraic symbols as above (dark brown and off-white)	\$ 11.00

CHESS MOVE TIMERS (CLOCKS)

'Turnier' German-made popular wind-up club clock, brown plastic	\$ 80.00
'Exclusiv' German-made as above, in imitation wood case	\$ 98.00
'Gambit' Deluxe wood - large face	\$129.00
SAITEK digital game timer	\$140.00

CLUB AND TOURNAMENT STATIONERY

Bundle of 200 loose score sheets, 80 moves and diagram	\$ 7.00
Bundle of 500 loose score sheets, 80 moves and diagram	\$ 15.00
Score pad, spiral-bound, 50 games, score sheets as above	\$ 3.50
Score book, spiral bound, lies flat at any page, 50 games of 70 moves, with index and diagram for permanent record	\$ 7.00
Artyfax peel-and-stick symbols (400 pieces) plus 20 diagram blocks	\$ 8.00

MAGNETIC CHESS

190 x 150mm (15mm green & yellow squares) flat disc pieces	\$ 47.50
270 x 200mm (24mm green & yellow squares) flat disc pieces (NZ made)	\$ 19.00
Standing pocket set 125 x 125 mm (15mm b & w squares)	\$ 5.00
Standing 325 x 325mm (38mm squares, 65mm King)	\$ 24.50

**WE ARE BUYING CHESS LITERATURE
OF ANY AGE AND ANY CONDITION.
TOP PRICES PAID.**

Please contact us with details for an offer.

EVERYTHING FOR CHESS AT N.Z.C.S.

New Zealand Chess



Official magazine of the New Zealand Chess Federation Inc.

Vol 26 Number 6

December 2000



New Zealand's Wang Puchen among 800 world age group players at Oropesa, Spain

New Zealand Chess

Official journal of the New Zealand Chess Federation (Inc.), published in February, April, June, August, October, December.

Editorial correspondence, copy and advertising inquiries should be sent to

*New Zealand Chess
c/- 103 Koromiko Road
Gonville
Wanganui*

Opinions expressed in articles, letter and other contributions are those of the authors. Letters on chess topics are welcome; limit 150 words and marked "for publication."

EDITORIAL

Editor, Ted Frost.

Overseas news editor, Peter Stuart.

SUBSCRIPTIONS

Subscription payments should be sent to

*Treasurer, NZCF
P O Box 216
Shortland Street
Auckland*

ANNUAL SUBSCRIPTION RATES

New Zealand, \$20.00.

Australia, South Pacific, \$US12.00 airmail.

East Asia, N America, \$US15.00 airmail

Europe, \$US17.50 airmail, \$12.50 economy.

Rest of world, \$US20.00 airmail, \$US15.00 economy.

Back issues available - send for details.

ADVERTISING RATES

Full page, \$NZ\$45.00

Half-page or full column, \$NZ22.50

Half column, NZ \$12.00

COPY DEADLINE

February issue, Sat, February 3.

Homepage: <http://ourworld.compuserve.com/homepages/nzchess>

Email to editor: tedfrost@xtra.co.nz

STOP PRESS

NZ Championship entries

Waitemata CC advise that the following entries for the coming NZ Championship have been received: IM Leonid Sandler AUS, IM Russell Dive, IM Anthony Ker, Rong Wang, FM Depasquale AUS, Leonard McLaren, NM Peter Green, Scott Wastney, Tim Hare, Graeme Spain, Matthew Barlow, Nigel Metge, Antonio Krstev, David Guthrie, Mark van der Hoorn, Bruce Wheeler, John Robinson, Nicolas Croad.

Chapman retires from NZCCA

After 12 years at the top, Roger Chapman has retired from the position of NZCCA chairman. He is being succeeded by Brett Sinclair, currently a committee member and Director of Overseas Play. Former Handicap Director of Play Michael Rocks takes over Sinclair's committee position.

The changes take place on January 1, 2001. A new Overseas Director of Play will be appointed.

World knockout championship

FIDE's world knockout championships, have just been played, with the early played in India and the final in Iran. Popular favourite in the early stages was India's Viswanathan Anand and he went through to the final. In round 5 he beat the defending champion, A Khalifman, 3.5-2.5, with a win in the 5th game and the rest drawn. In the 6th and semi-final round Anand beat Michael Adams ENG, 2.5-1.5, while A Shirov ESP beat A Grischuk RUS 2.5-1.5.

Xie Jun CHI won the women's title.

Latest score: After 3 games, Anand led 2.5-.5.

COVER PICTURE: Wang Puchen and Colm Hartigan represented New Zealand at the 2000 World Age Group Championships in Spain, and in this issue of New Zealand Chess Michael Freeman gives an insight into the background of the event.

New Zealand Chess

Vol 26 Number 6

December 2000

Contents

- 4 The New Zealand team experienced the usual roller-coaster results at the Olympiad in Istanbul. As team manager Michael Freeman reports, the most successful players were the open team's No. 6 Scott Wastney and the women's team No. 3, Helen Courtney. Michael also reports on a number of FIDE decisions which affect New Zealand players.
- 8 Ben Giles marks his return from overseas by taking the S.I. title.
- 11 Club correspondents make a welcome return to enable us to run a column of New Zealand news.
- 12 Tributes to Nigel Hopewell (by Martin Dreyer) and Conrad Newick.
- 15 The end-of-year rating list.
- 20 Gordon Hoskyn updates progress with the current NZCCA Trophy Tourneys and extends an invitation for more players to join in correspondence chess as a new season approaches.
- 22 Peter Stuart gives an overview of the Kasparov - Kramnik match which gives us another world champion.
- 26 With other world chess events attracting attention, Peter Stuart's Overseas News report is shorter than usual.
- 28 Michael Freeman gives an enlightening report on the World Youth tournaments in Oropesa, Spain, with a selection of games played by Puchen Wang and Colm Hartigan.

NEXT ISSUE: Full report and games from Congress, a wide selection of games from the South Island Championship and club championships, a background piece on Ben Giles, lists of top-rated players, women and juniors, review of the world knockout championship, and our regular updates on correspondence chess and overseas news.

Coming events

We hope to run a list of 2001 tournaments in the next issue of *New Zealand Chess* - but that depends on decisions being made on events and venues, and on clubs supplying the information.

Events that are not publicised don't get entries.

34th Olympiad, Istanbul, 2000

By ICM Michael Freeman

After escaping from the major Spanish flood on the last day of the World Youth (see p 28), I moved onto Frankfurt and met up with the rest of the team travelling to the Olympiad. The 34th Olympiad was hosted by Istanbul, Turkey; a move back west after the last three events being in the old Soviet empire.

The open event saw New Zealand represented by a team of Russell Dive, Ben Martin, Anthony Ker, Bob Smith, Peter Green and Scott Wastney; whilst Vivian Smith, Eleonora Mikhailik and Helen Courtney made up the team in the Women's section. Victor Portougal and myself were the team officials.

The first thing that struck me was the efficient and friendly nature of the Turkish organisation. The usual hours of registration, sorting out accommodation, meal tickets etc were non-existent. The 126 men and 86 women teams were comfortably housed in 42 hotels within the Taksim district, about 15 minutes walk from the playing venue. New Zealand was housed in the same hotel as Australia, Papua New Guinea, Norway, Cyprus and Israel.

Drug testing too costly

At the start of the event it was announced that the threatened drug testing would not occur due to the expense, leading to a stampede to the coffee stand.

Unfortunately, the excellent first impression got dented by a poor opening ceremony, followed by a shambles at the start of the first round which saw the players waiting around for 50 minutes due to computer problems.

Even worse struck in round two when the games started, the players made a few moves, and after 5 minutes the round stopped again and the players were asked to reset the pieces and clocks! A 20-minute delay followed, and the games restarted with the same moves being required to be played. And the reason for this? – the internet!

This Olympiad was being broadcast live with all 381 games each day being displayed in real-time utilising a large network of electronic chessboards and clocks. However, technology problems and players adjusting pieces at the start of the game lead to some interesting games appearing in the bulletin. 2.e4 c5 3.dxc5 d6 4.cxd6 exd6 5.Qxd6 Nc6 6.Qxc6+ and black resigned!. Luckily, normality was restored by round three, and the rest of the event ran very smoothly.

The closing ceremony was impressive with a musical sequence to represent the long history of Turkey and its empire.

Usual slow start

In the chess, the open team made its usual slow start; built up some momentum during the middle rounds, before ending with two disappointing results in the crucial last two rounds. The final score of 26 was two points shy of our initial target.

Russell Dive held well with the white pieces on the top board, whilst having his Alekhine Defence severely tested as black. His performance rating of 2402 closely matched his 2414 rating.

Ben Martin and Anthony Ker never seemed to click and their performance ratings of 2252 and 2224 are around 100 points below their ratings.

Bob Smith started with 0/3, but found some excellent form to gain 4.5 points from his next seven games for a 2265 performance.

Peter Green was his usual solid self with a 2286 performance.

Scott Wastney recovered from his first game, where he fell asleep in a winning position at move 39 and lost on time, to score a respectable 6/9 and a 2284 performance.

The team's final placing was 87th from an initial seeding of 69th. Overall winner was again Russia, ahead of surprise package Germany.

Olympiad results, round by round

Open	CHN	LUX	ZIM	BOL	PAR	PLE	TUR	PAK	CHI	AZE	MYA	TUN	BEL	CYP	Total
Dive, R J	.5	0	-	1	.5	1	0	-	0	.5	-	1	0	.5	5.0/11
Martin, B	0	.5	-	0	-	-	-	.5	1	.5	0	-	0	.5	3.0/9
Ker, A	0	-	1	0	-	1	.5	.5	-	0	-	0	-	-	3.0/8
Smith, R W	0	-	0	0	.5	-	1	1	-	.5	.5	-	.5	.5	4.5/10
Green, P	-	.5	1	-	0	1	.5	-	.5	-	.5	.5	0	-	4.5/9
Wastney, S	-	0	1	-	1	1	-	1	.5	-	0	1	-	.5	6.0/9
Total	.5	1	3	1	2	4	2	3	2	1.5	1	2.5	.5	2	26.0

Women	AUS	FRM	JPN	IRL	CRC	SIN	RSA	MAS	IRI	ANG	ISL	ISV	ESA	MAC	Total
Smith, V	0	0	0	1	.5	1	0	1	.5	.5	0	1	0	.5	6.0/14
Mikhailik, E	0	0	.5	.5	0	0	1	0	0	.5	0	1	0	1	4.5/14
Courtney, H	0	.5	.5	1	.5	1	1	0	0	1	0	1	.5	1	8.0/14
Total	0	.5	1	2.5	1	2	2	1	.5	2	0	3	.5	2.5	18.5

Women played 14 games

The women's team found themselves having to play all 14 rounds when Edith Otene failed to get on the flight from New Zealand.

The final score of 18.5 points was half a point more than the previous three events, a good result. Vivian Smith did a good job handling the difficult board one for a 2008 performance. Eleonora Mikhailik rather struggled on board two, but did gain a couple of wins towards the end. Helen Courtney had a field day on board three by playing good solid chess for a 2058 performance and a guaranteed FIDE rating for scoring over 50%. The team final placing was 74th from an initial seeding of 73rd. China was again the winner from Georgia.

The IOC and drug testing

On the political front FIDE made some important decisions that will impact on New Zealand to some extent. The recognition of chess by the International Olympic Committee continues to see the need for a more professional approach from both FIDE and National Federations due to the impact of drug testing. This is a development that cannot be ignored, and requires specialist medical and legal advice.

From next year FIDE expects that the National Championships will be drug tested, with 10 percent of the players and the winner

being tested. At 300 US dollars per test, this will present a financial challenge. The biggest battle could be to get the NZ Olympic Committee to accept chess, in spite of the lead from the IOC.

Zonal and title changes

The zonal regulations were altered to only allow one International Master and two FIDE Master titles to be gained per event. Also, the seven-year time expiry on title norms was removed which will be good news for some NZ players. However, they must get at least one more title result to claim the title.

The 2001 zonal will be in Australia, and the 2002 zonal back in New Zealand.

The world championship format is also being altered yet again into a World Grand Prix circuit, but details are yet to be finalised. The 2002 Olympiad is in Bled, with China and Spain bidding for 2004.

Ratings down to 1000

Finally, they decided to increase the FIDE rating list all the way down to a rating of 1001, to be done by converting National ratings and allowing various local events to be submitted for rating.

The team would like to thank all those who generously gave to the Olympiad appeal, whilst I would thank the team members for their company and friendly helpful spirit during the event.

Games from the Olympiad

Open

Green,P (2239) - Cochrane,J (2223) ZIM
R 3 [E32] Nimzo=Indian Def.

1.d4  f6 2.c4 e6 3. c3  b4 4. c2 0-0 5.a3  c7 6.e4 d6 7. f3  c6 8.h3 e5 9. e3 exd4 10. xd4  xd4 11. xd4  e8 12. e2 b6 13.0-0  b7 14. f3  c8 15. fe1  d7 16. g4  d8 17. ad1  g5 18. d5 c6 19. c3  c7 20.g3  ad8 21. h2  e5 22. e2  e7 23.f4  g6 24. f3 d5 25.exd5 cxd5 26. b5  b8 27. g2  d7 28.cxd5  ed8 29. c3  a8 30. e4  f8 31. c2  e7 32. xh7+  h8 33. e4  xd5 34. f5  d6 35. e5  xc3 36. xd6  xd6 37. xc3  b8 38. e2 1-0

Mangwengwende,J (2170) ZIM - Wastney,S (2219)

R 3 [B4] Alekhine's Def, Modern Var.

1.e4 c5 2. f3 e6 3.d4 cxd4 4. xd4  f6 5. c3  c6 6. e2  b4 7. db5 0-0 8.0-0 a6 9. d6  c7 10. xc8  axc8 11. d3  xc3 12.bxc3  e5 13. g5  xc3 14. xf6 gxf6 15.f4  xd3 16.cxd3  d4+ 17. h1  h8 18. b1 b5 19. h5  g8 20. h4  g6 21. bd1  c2 22.g4  e3 23.g5 ffg5 24.fgg5  e2 25. h3  xg5 26. de1  h5 27. xh5  xh5 28. xf7  cxh2+ 29. g1  h1+ 30. f2  5h2+ 31. g3  h3+ 32. g2  xe1 0-1

Haznedaroglu,K (2249) TUR - Smith,R (2270)

R 7[B42] Sicilian Def, Paulsen Var.

1.e4 c5 2. f3 e6 3.d4 cxd4 4. xd4 a6 5. d3  b6 6. b3 d6 7. e3  c7 8.0-0  f6 9.c4  bd7 10.f4 h5 11.h3 h4 12. c3  e7 13. c1 b6 14. d2 g6 15. d4  h7 16. e1  b7 17.e5 dxe5 18.fxe5  h5 19. d5 exd5 20.cxd5  c5 21. xc5  xc5 22. f2  xd5 23.b4  xb4 24. xc7  xe1 25. f1  a5 26.e6  xe6 27. xg6 b5 28. b7  d5 29. xh7  xb7 30. f5  g3 31. e5+  d7 32. d3  e8 33. xe8  xe8 34. f6  b6+ 35. h2  d8 36. e5  e4 0-1

Waqar,M (2208) PAK - Wastney,S (2219)
R 8 [D02] Queen's Pawn Game

1.d4  f6 2.g3 g6 3. g2 d5 4. f3  g7 5.0-0 0-0 6. f4 c6 7. bd2  bd7 8.c4 dxc4 9. xc4  b6 10.b3  e6 11. a5  c8 12. g5  g4 13.f3  d7 14. c1  fd5 15. d2  xf4 16.gxf4  c7 17. fd1  d5 18.e3  xe3 19. xe3  xa5 20. xe7  d8 21. b4  b6 22. c4  ad8 23. h1 h6 24. e4  e6 25. e2  xd4 26. g3  fe8 27. c2 f5 28. f1  f7 29. e1 c5 30.h3  f6 31. g3  xe1+ 32. xe1  h4 33. h2  xf4 34. d1 h5 35. c1  xc1 36. xc1  e5 37.h4 b6 38. h3  d2 39. e1  f6 40.f4 0-1

Martin,B (2377) - Silva Sanchez,C (2407)
R 9 [B93] Sicilian Def, Najdorf Var.

1.e4 c5 2. f3 d6 3.d4 cxd4 4. xd4  f6 5. c3 a6 6.f4  c6 7. f3  d7 8. c4 e6 9.0-0  e7 10. e3 b5 11. d3  c5 12. xc5 dxc5 13.a4 c4 14.axb5 cxd3 15.bxc6  b6+ 16. h1 dxc2 17. xc2  xc6 18. e5  b7 19. a4+  f8 20.f5  c7 21. xf7  xf7 22.fxe6+  g6 23. d5  d6 24. a3  g5 25.e5  xe6 26. e4+  h6 27. h3+  xh3 28.gxh3  b7 29.h4  d2 30. d1  xd5 31. xd5  ad8 32. e4 g5 33. a1 a5 34. c6+  h5 35.hxg5  xg5 36. f3+  h6 37. g1  hf8 38. h3+  g6 39. e6+ 1-0

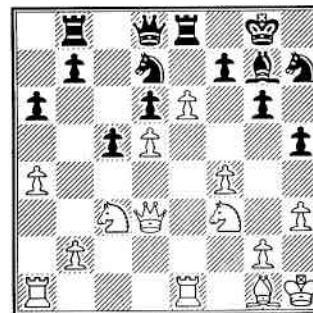
Ker,A (2348) - Bagirov,R (2471) AZE
R 10 [A45] Q P, Trompowski Var.

1.d4  f6 2. g5  e4 3. h4 c5 4.f3 g5 5.fxe4 gxh4 6. c3  c6 7.e3  g7 8. f3  b6 9. d5  a5+ 10. d2  xd2+ 11. xd2  b8 12.e5 e6 13. f6+  e7 14. e4 cxd4 15.exd4  h6+ 16. c3 b6 17. xh4  b7 18. d6  hc8 19. xc8+  xc8 20.b3  g5 21. f3  xe5+ 22. b2  xf3 23.gxf3  d2 24.c4  xf3 25. d3  xh1 26. xh1 h6 27. g1  e3 28. g4  g5 29. c3 f5 30. g2  f6 31. e2  e7 32.b4 d6 33. d3  f6 34. g6  f7 35. xh6  g7 36. h3 b5 37. b3  xd4 38.c5 dxc5 39. xb5  c7 40.bxc5  xc5 41. d7  e5 42.a4  f6 43. h6+  e7 44. c8  d6 45.h4  e3+ 46. b4 f4 4e2+

47. h7  c5+ 48. c4  e4+ 49. d3  xa4 50. h6  d4+ 51. e2  e4+ 52. f3  e5 53. g6  e3 54. g4  e7 55. g7+  f6 56. c7  b5 57. c6  b6 58. xb6 axb6 59. a6 e5 60.h5  c5 61. f3  f8 62. e4  g7 63. c4  g5 64. e2  h8 65. d5  h4 66.h6  g3 67. e4  f2 68. b5 f3 69. c6  g3 70. e3 f2 71. e2 b5 72. f1 b4 73. d5  f6 74.h7  h8 75. b3 e4 76. d5 e3 77. c4 b3 78. xb3 e2+ 79. xe2  g2 0-1

Dive,R (2414) - Bouaziz,S (2383) TUN
R 12 [A65] Benoni

1.d4  f6 2.c4 c5 3.d5 d6 4. c3 g6 5.e4  g7 6. ge2 0-0 7. g3 e6 8. e2 exd5 9.cxd5 a6 10.a4  bd7 11.0-0  b8 12. e1  e8 13.h3  c7 14. e3 h5 15. c2  h7 16. f1  e5 17.f4  d7 18. h1  d8 19. d2  d4 20. g1  b6 21. f3  g7 22.e5  f5 23. d3  xd3 24. xd3  d7 25.e6



25... df8 26.f5  xc3 27.bxc3  f6 28.fgg6  xg6 29.exf7+  xf7 30. d2  g8 31. h2  bd8 32.c4  f6 33. h4  e4 34. f4  h7 35. e3 1-0

Women's games

Smith,V (2020) - O'Siochru,M IRL
R 4 [D02] Queen's Pawn Game

1.d4 d5 2. f3  f6 3. f4 c6 4.c3  bd7 5. bd2 g6 6.h3  g7 7.e3 0-0 8. d3 a6 9.0-0  h5 10. h2 c5 11. e1 b5 12.e4 c4 13. c2 dxe4 14. xe4  a7 15.a4  b6 16.b3 cxb3 17. xb3  df6 18. d3  f5 19. f1  e6 20. c4

 xc4 21. xc4  b7 22.axb5  d5 23. cd2  fa8 24.c4 axb5 25. xa7  xa7 26.cxd5  xd4 27. xd4  xd4 28. f3  c5 29. e5  a3 30. b2 f6 31. d4  d6 32. c3  a7 33. b4  xd5 34. xe7  f7 35. b4  f4 36. d2  xh3+ 37.gxh3  xf3 38. e3  xe3 39. xe3 g5 40. g2  b7 41. g3 h5 42. f3  g6 43. d3  f5 44. d5+  e6 45. e4  b6 46. c5 h4 47.f3  d6 48. xb5  d1 49. b6+  f7 50. c3  h1 51. xf6  xh3 52. xg5  h1 53. f5 h3 54. b7+  e8 55. h7 h2 56. f4  f8 57. h3  g7 58. h4  g6 59. g3 1-0

Mikhailik,E - Frick,D RSA
R 7 [C05] French Def, Tarrasch Var.

1.e4 e6 2.d4 d5 3. d2  f6 4.e5  fd7 5.f4 c5 6. gf3  c6 7.c3  e7 8. d3 cxd4 9.cxd4 f5 10.0-0 0-0 11.b3  b6 12. h1  d7 13. b2  c8 14. c1  b4 15. b1  b5 16. g1  xc1 17. xc1  c7 18. f1  c8 19. e3  c3 20. d2  c7 21.g4 ffg4 22. xg4  d3 23. xb4  xb1 24. xb1  xb4 25. f6+  f8 26. xh7 g6 27. g8+  e7 28. xg6  f8 29. g5  c6 30. g7+  d8 31. gh7  c3 32. xf8  f3+ 33. g2  xg2+ 34. xg2  xf8 35.h4  c8 36. g8  e7 37. h7 1-0

Conceicao Venancio,M ANG - Courtney,H R
R 10 [D58] Queen's Gamb, Tartakover's Def.

1.d4  f6 2.c4 e6 3. c3  b4 4. g5 h6 5. h4  e7 6. f3 d5 7.e3 b6 8.cxd5 exd5 9. c1 0-0 10. d3  e8 11.0-0  b7 12. e1  e4 13. xe7  xe7 14. d2  d7 15. dxe4 dxe4 16. b1  f6 17.a3  d7 18. a4  e7 19.d5  xd5 20. xd5  xd5 21. c6  c8 22. b7  d8 23. xa7 c5 24. a4  d2 25. ed1 b5 26. xd2  xd2 27. c2  d8 28. xd2  xd2 29.b3  h2 30. c2  d7 31. xe4  xb3 32. c6  b6 33.h3 c4 34. a1 c3 35. e4  b2 36. c1  a4 37. c2  c5 38. f1  b3 39. xb3  xb3 40. e1  xa3 41. c2 b4 42. d1 f6 43.f3  a1+ 44. e2 h3 45. xc3 b2 0-1

2000 South Island Championship

By Duncan Watts

The first South Island Championships of the new millenium were held at the Otago Chess Club's rooms in Dunedin over the last week in September. The tournament attracted a meagre field of just 14 players.

Several of Otago's strongest players were conspicuous by their absence, although the organising committee did successfully lure Kendall Boyd back into competitive chess after a period of relative inactivity.

Visitors from out of town included Bruce Donaldson and Arie Nijman (Canterbury), Bruce Gloistein (Kakanui), Ben Giles (Springs Junction) and Michael St Joseph (on holiday from Australia).

Top seed by a considerable margin was Kendall Boyd, whose 2135 rating was nearly 400 points better than the second seed! The tournament was smoothly run by Malcolm Foord, although the combination of playing and directing may have adversely affected the play of the former South Island Champion.

Round 1: The upsets began almost immediately as several players seeded in the top half lost to the lower-rated opponents., Nijman, Foord and Gold losing to St Joseph, Reid and Lambert respectively.

Boyd,K - Heperi,D

R 1 [B01] Centre Counter

1.e4 d5 2.exd5 f6 3.d4 e6 4.dxe6 Qxe6 5.f3 Qd6 6.Qe2 Qe7 7.0-0 Qc6 8.c4 0-0-0 9.Qa4 Qg4 10.d5 Qd4 11.Qxd4 Qxh2+ 12.Qh1 Qh4 13.Qf3 Qxf2+ 14.Qxf2 Qxf2 15.Qxh2 Qd7 16.Qc2 Qhe8 17.Qc3 g5 18.Qxg5 Qg8 19.Qe4 Qb6 20.Qxd8 Qxd8 21.Qc3 Qg6 22.c5 Qh6+ 23.Qg1 Qg6 24.Qe5 Qf5 25.d6 Qxe4 1-0

Round 2: No unexpected results in this round, with all the higher-rated players taking out the full point. Early leaders: Boyd, Giles and Donaldson all on 2.

Round 3: Donaldson took the outright lead by beating Nijman while Boyd and Giles were content to share the point. Donaldson 3, Boyd and Giles 2.5.

Boyd,K - Giles,B

R 3 [B01] Centre Counter

Notes by Ben Giles

1.e4 d5 2.exd5 f6 3.d4 Qxd5 4.f3 g6 5.Qe2 Qg7 6.0-0 0-0 7.c4 Qb6 8.h3 Qc6 9.Qe3 e5 10.d5 Qe7 11.Qc3 Qf5 12.Qg5

This was played to weaken Black's king-side pawns and dark-squared bishop, but White's bishop must retreat afterwards. I see nothing wrong with 12.Qd2, where after the bishop is exchanged White maintains a slight advantage in space and development. The text allows Black to break up White's centre.

12...f6 13.Qd2 c6 14.dxc6 bxc6 15.Qe4 Qd4 16.Qb4 Qf7 17.Qxd4 Qxd4 18.Qxd4 exd4 19.Qc5 f5

White has good control of the queenside, but Black's dark-squared bishop is getting stronger.

20.Qac1 Qd7 21.Qfd1 a5 22.Qa3 Qxc5 23.Qxc5 d3 24.Qxd3 Qxb2 25.Qd8+ Qg7 26.Qcd1 Qb7 27.Q8d7 Qe8 28.Qf1

After 28.Rxf7+ Kxf7 29.Rd7+ Kf6, Black has counterplay.

28...Qc8 29.Q7d6 Qfe7 30.Qf3 Qc3 31.Qe3 If 31.Kg1 Re1+ 32.Rxe1 (32.Kh2 Be5+) Rxe1+ 33.Kh2 Be5+ wins material for Black. Possibly 31.Bd4+ is better, exchanging off Black's strong bishop.

31...c5 32.Qg1 Qe6 33.Qd8 Qb4 34.h4 Qa6 35.Qxe8 Qxe8 36.Qd7+ Qf6 37.Qd5 Qc8 38.Qxh7 Qe6 39.Qc6 Qg8 40.Qh8

Exchanging rooks also makes it hard to win for White, but the opposite bishops should make it easy for Black to hold the draw.

40...Qxe3 41.Qxg8 Qe1+ 42.Qh2 Qe2 43.a4 Qxf2 44.Qe8 Qf4 45.Qxg6+ Qe7 46.Qb5 Qxh4+ 47.Qg3 Qg4+

A simple draw from here against the clear pre-tournament favourite.

48.Qxg4 fxg4 49.Qxg4 Qf6 50.Qh5 Qg7 51.g4 Qc3 52.g5 Qd2 53.Qg4 Qc3 54.Qf5 Qd2 55.g6 Qc3 56.Qe8 Qd2 57.Qe6 Qc3 ½-½

Round 3: Donaldson took the outright lead by beating Nijman while Boyd and Giles were content to share the point. Donaldson 3, Boyd and Giles 2.5.

Round 4: Boyd ended Donaldson's brief flirtation with lead, to be joined by Giles, who disposed of Gloistein. Luke Lambertg, playing with a provisional 1250 rating, scored his third win to join the leading group. Boyd and Giles 3.5, Donaldson and Lambert 3.

Round 5: The four leaders all drew, Lambert doing particularly well to draw with top seed Boyd. Despite this the chasing pack were unable to close the gap significantly. Boyd and Giles 4, Donaldson and Lambert 3.5.

Round 6: Giles took the outright lead with a win over Lambert, while Donaldson beat Gloistein to retain second place. Boyd slipped off the pace by losing to Nijman. St Joseph scored a good win over Gold to claim a share of third and join the leading group. Giles 5, Donaldson 4.5, Boyd and St Joseph 4.

Round 7: Boyd's second successive loss,

this time to Foord, effectively ended his challenge. Giles and Donaldson hung on to first and second respectively with wins over Nijman and St Joseph. The battle for third place continued to fluctuate wildly with Heperi scoring a win over a tiring Lambert to move up the field. Giles 6, Donaldson 5.5, Heperi 4.5.

Donaldson,B - St Joseph,M

R 7 [C02] French Def, Advance Var.

1.e4 e6 2.d4 d5 3.e5 c5 4.c3 Qc6 5.Qe3 Qb6 6.Qd2 cxd4 7.cxd4 Qe7 8.Qd3 Qd7 9.Qf3 Qb4 10.Qe2 Qf5 11.Qc3 Qxe3 12.fxe3 g6 13.0-0 Qh6 14.Qac1 Qa5 15.h3 Qc8 16.Qh2 Qxa2 17.Qa1 Qxc3 18.bxc3 Qxc3 19.Qxa2 Qxc3+ 20.Qh1 Qxd4 21.Qg4 Qg5 22.Qa3 Qe7 23.Qf6+ Qd8 24.Qa5+ Qc8 25.Qxd7 Qxd7 26.Qb5+ Qc8 27.Qac1+ Qb8 28.Qc7+ Qa8 29.Qc8+ Qxc8 30.Qxc8# 1-0

Round 8: Giles secured the title with a win over Heperi. Donaldson made sure of outright second by drawing with Foord. Boyd, Gloistein and St Joseph all won to take a share of third with 5 apiece. Giles 7, Donaldson 6, Gloistein and St Joseph 5.

Giles,B - Heperi,D

R 8 [A56] Old Indian Def.

Notes by Ben Giles

1.d4 c5 2.d5 Qf6 3.c4 Qe4

				R1	R2	R3	R4	R5	R6	R7	R8	Total
1	Giles B	-	1690	+10	+5	=3	+4	=2	+7	+8	+6	7
2	Donaldson B	CA	1655	+13	+12	+8	-3	=1	+4	+5	=9	6
3	Boyd K	-	2135	+6	+4	=1	+2	=7	-8	-9	+11	5
4	Gloistein B	OT	1618	+14	-3	+11	-1	+9	-2	+13	+8	5
5	St Joseph M	-	1450p	+8	-1	+10	-7	+5	+11	-2	+14	5
6	Heperi D	OT	1547	-3	+14	=9	+12	-5	+10	+7	-1	4.5
7	Lambert L	OT	1250p	+11	-8	+14	+5	=3	-1	-6	+13	4.5
8	Nijman A	CA	1768	-5	+7	-2	+9	+12	+3	-1	-4	4
9	Foord M	OT	1674	-12	+10	=6	-8	-4	+13	+3	=2	4
10	Soe Win K	OT	1401	-1	-9	-5	+11	+13	-6	+14	=12	3.5
11	Gold H	OT	1632	-7	+13	-4	-10	+14	-5	+12	-3	3
12	Reid D	OT	1369	+9	-2	+13	-6	-8	=14	-11	=10	3
13	Clarkson R	-	1350p	-2	-11	-12	+14	-10	-9	-4	-7	1
14	Moore T	OT	1200p	-4	-7	-7	-13	-11	=12	-10	-5	0.5

This attack is too early. By moving the knight more than once, Black falls behind in development.

4.♖c2 ♗a5+ 5.♘d2 ♠xd2 6.♠xd2 g6 7.e4 ♘g7 8.♠f3 d6 9.♘e2 ♘d7 10.0-0 ♘a4 11.♠b3 ♗b6 12.♠fd2 ♠a6 13.♗ae1 ♠b4 14.♗b1 a5 15.f4 ♘d7 16.♠f3 a4 17.♠bd2 0-0 18.♠h1

During all this manoeuvring White has managed to get f4 in, and now has good play in the centre. Also, Black's knight is caught out of play.

18...e6 19.a3 ♠a6 20.e5 exd5 21.cxd5 dxe5 22.fxe5 ♠c7 23.♠c4 ♗a7 24.♗d3 ♘f5 25.♗d2 b5 26.♠d6 ♘d7 27.♗d1 ♗ad8 28.h3

White has plenty of time to improve his position, as Black's pieces are tied down, with few moves available.

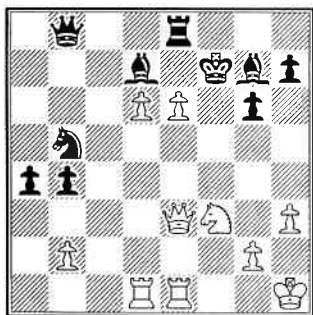
28...♗a8 29.♗fe1 b4

Black should not give White the strong e4 square for his bishop, but it is difficult for him to gain counterplay anywhere else.

30.axb4 cxb4 31.♘c4 ♗b8 32.♗e3 ♠b5 33.♠xf7! ♗xf7 34.d6

Not 34.e6? because of 34...Re7.

34...♗e8 35.♘xf7+ ♠xf7 36.e6+



36...♠g8

If 36...♘e6 then 37.d7 ♘d7 38.♗xd7+ ♠f8 39.♗xe8+ ♗xe8 40.♗xe8+ ♠xe8 41.♗xg7 is winning for White; 36...♗e6 loses to 37.♠g5+ ♠f6 38.♠xh7+ ♠f5 39.g4#.

37.exd7!! ♗xe3 38.♗xe3 ♠xd6 39.♗xd6 ♗xd6 40.♗e8+ ♠f7

40...Bf8 is better, but after 41.e8=Q Black is still lost after a queen exchange, as White can stop the queenside pawns.

41.♠g5+ ♠f6 42.♠e4+

I believe I saved my best game for last in this tournament. 1-0

was a clear and deserving winner. He played chess with a consistency his closest challengers were unable to match. Donaldson also played well for outright second place, and but for his loss to Boyd in round 4 could well have put more pressure on the eventual winner over the latter stages.

Boyd would have been disappointed with his form slump in the second half of the tournament, in which he scored on 1.5/4, thus effectively ending his changes. Michael St Joseph and Luke Lambert should be well pleased with their results, having started from the lower half of the field.

Love takes S.I. Rapid

The 2000 South Island Rapid Championship was held the day after the conclusion of the main tournament. A disappointingly small field of 12 elected to play, although the field was strengthened by the appearance of Tony Love and John Sutherland. With ratings in excess of 2000 these two players were the top seeds by a considerable margin.

The tournament was convincingly won by Love, whose 6/6 picket fence put him 1.5 points clear of the nearest chasers. John Sutherland and Ben Giles shared second on 4.5, both having lost to Love and drawing with each other. The B grade was shared between Luke Lambert and Trevor Rowell on 3.

● *More games from the South Island Championship and more about the new S.I. champion's, activities overseas in the next issue of New Zealand Chess.*

North Shore

Leonard McLaren and Peter Stuart have jointly won North Shore CC's Rapid Championship, scoring 15 points from three six-round legs. Prashant Mistry was third on 14, with Antonio Krstev 12.

Mistry won the Handicap with 12.54, followed by Tom Evans 12.02, Shi-Long Yao 11.72 and Neil Gunn 10.88.

Auckland C C

This year's Auckland Chess Centre championship was marred by the tragic death of Nigel Hopewell. Nigel had been a member of the club for over 20 years and he will be missed by his many friends at the club.

Alexei Kulashko was a comfortable winner of the A grade championship, conceding just two draws. Bruce Wheeler and Matthew McNabb also put in strong performances, finishing 2nd and 4th respectively. Roger Perry won his last two games, which was just as well as he had lost his first seven!

In the B grade, Don Eade edged out Puchen Wang to take the title, despite losing their individual encounter. Merv Morrison had a strong tournament, scoring 5/7 before losing in the last two rounds to the leading players.

Scores: A grade: A Kulashko 7/9, B Wheeler 7, B Watson 6.5, M McNabb 6, R Davies, P Beach 4, F Fuatai 3, B Latimer 2.5, R Perry 2 (Nigel Hopewell 2/5). B grade: D Eade 8/9, P Wang, 7.5, K Ward 7, R Beesley 6, P Young, P Martin 5.5 (29 players).

- Bruce Watson, club captain

New Plymouth CC

Errol Tuffery has succeeded Bob Bowler president of New Plymouth Chess Club, and other officers elected this year are: Vice-president, D Notley; secretary, A Jury; treasurer, J Mulder; committee, C Bell and B Bowler.

Otago CC

The Otago Chess Club has appointed an interim committee to see it through to the next

New Zealand news

AGM early in the new year. Graham Haase is acting president and Duncan Watts is acting secretary.

Hamish Gold is leading the club championship from John Sutherland, with Duncan Watts and Malcolm Foord in close pursuit.

Olympiad appeal

Previously acknowledged	\$555
Invercargill CC	\$100
Wanganui CC	\$100
Wellington Chess Club	\$100
John Cook	\$20
Wanganui CC members	\$67
Upper Hutt CC	\$100
Total to date	\$1032

Nominations for NZCF officers

The annual meeting of the New Zealand Chess Federation will be held in Auckland on January 5 and the following nominations for officers have been received:

President, Bob Smith (nominated by Waitemata and Auckland CCs), Peter Stuart (North Shore); vice-president, Bob Gibbons (North Shore); secretary, Jack Frost (Auckland and Waitemata), Neil Gunn (North Shore); treasurer, Bruce Wheeler (Auckland); councillors, Auckland, Martin Dreyer (North Shore), Hilton Bennett (Auckland, Hamilton, North Shore, Waitemata), Daniel Johns (North Shore), Vivian Smith (Auckland, Waitemata); councillors, Wellington, Michael Freeman (Wanganui), Ted Frost (Wanganui).

2000 Australian Masters

The 2000 Australian Masters tournament in Melbourne was won by 20-year-old English player Adam Hunt, who scored 8 points and headed 5 IMs. He easily gained an IM norm.

One or two New Zealand players usually take part in this tournament, but this year the only kiwi in the field was Australia-domiciled IM Ben Martin. He finished with 6 points, behind Australian IMs Guy West and Stephen Solomon and Gerard Welling NED.

Nigel Hopewell

By FM Martin Dreyer

On 17 August this year Auckland lost another of its best players when Nigel Hopewell was killed in a car accident.

Like his twin brother Michael, Nigel had been successful in chess from an early age, first winning the Auckland Schoolpupil Championship in 1981 and finishing second in the N.Z. Schoolpupil championship later that year.

It was at this tournament where I first met Nigel and over the course of the following six years we played many friendly and tournament games together.

In April 1987 Nigel suffered a major blow when brother Michael died. Within the next 18 months his mother passed away as well.

Nigel played periodically after a short period of time in Australia before returning to New Zealand in 1988. In the 1990's Nigel regularly competed in club tournaments at the Auckland Chess Centre, winning the club championship on at least two occasions. He represented the club at numerous interclub events and showed more enjoyment from a team win than his own individual successes.

Nigel had been looking forward to the Jenkins trophy match against the North Shore club (which was played on 28 August 2000).

Nigel played his part in chess administration over the years, having served on the Auckland Chess Centre committee and as Secretary of the Auckland Chess Association. He was particularly keen to help with junior coaching.

Creative openings

In his own games he would often try to vary his opening setups against regular opponents, relying more on creating something new than the brute knockout opening preparation that is perhaps more common these days.

The following game was sent to me by

Nigel while he was living in Australia. The notes to the game are all his own. For those interested in creating something special you may find this game as enjoyable as the players did.

Solomon,S - Hopewell,N

[C99] Ruy Lopez, Tschigorin Def.

Australia, 1 May, 1988

Notes by Nigel Hopewell

1.e4 e5 2.♁f3 ♁c6 3.♁b5 a6 4.♁a4 ♁f6 5.0-0 ♗e7 6.♗e1 b5 7.♁b3 d6 8.c3 0-0 9.h3 ♁a5 10.♗c2 c5 11.d4 ♣c7 12.♁bd2 cxd4 13.cxd4 ♗d8?!

A Keres idea, one which I've always been a little doubtful about, but that hasn't stopped me from playing it three times. I guess I played it because I'm a weenie unconfident of my knowledge of the various defences. This is a rather little-known variation. The idea is that after the perfunctory 14.Nf1 Black plays 14...exd4 15.Nd4 d5 with 'active play,' but I suspect the whole idea is positionally suspect anyway. Of course, Black welcomes 14.d5 [d5 is only good after 13...Bb7 when the Bishop is a little misplaced].

14.b3

I think this move is quite good, as it makes the ...exd4 and ...d5 idea untenable, as White controls e4. Therefore what the hell am I doing with my rook on d8?

14...exd4

My idea was to try and utilise the weakening of the long Black diagonal (via Nc6, Bf6). However, this turns out unsatisfactory, it was probably better to play 14...Nc6 first.

15.♁b2 ♁d7 16.♗c1 ♁e5 17.♁xd4 ♣b6 18.♁f1 ♗f6 19.♁e3 ♗e6 20.♁d5?

Rather a poor move from Solo. Simply with 20.f4 White forces favourable exchanges and enhances his advantage, e.g. 20.f4 Nec6

21.Nxc6 Bxb2 22.Nxd8 Bxc1 23.Qxc1 Rxd8 24.Qd2 with clear advantage.

20...♗xd5 21.exd5 ♗e8?

I had in mind what I thought was an equalising manoeuvre - exchanging dark-square bishops via the tactic ...Nf3. However, the idea was rather naive, as I failed to take into account the resulting bereavement of my king's defences. Instead, 21...Rc8 should equalise.

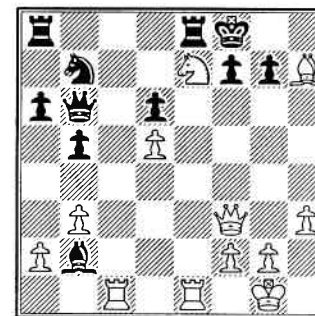
22.♗b1 ♁b7?

Rather bad. 22...Rac8 was best. 22Nf3+ looks unsavoury as after 23.Qxf3 and the exchange on d4 and of a pair of Knights, White's rook comes to the seventh, hitting f7.

23.♁c6 ♁f3+ 24.♣xf3 ♗xb2 25.♗xh7+! ♁f8

Accepting it is out of the question, although it took a considerable lump of my time convincing myself of this. It's quite beautiful how denuded of defence Black's king is despite the presence, on an open board, of his queen, rook and bishop. Unfortunately, I haven't got down the illustrative variations, but basically White's queen and knight e7 make Black's king position very uncomfortable. Solo showed me that White doesn't even need the help of a rook, he can simply enlist the help of his g and h pawns. Quite beautiful! Note how hapless the Qb6 and Nb7 are!

26.♁e7!!



What a lovely move.

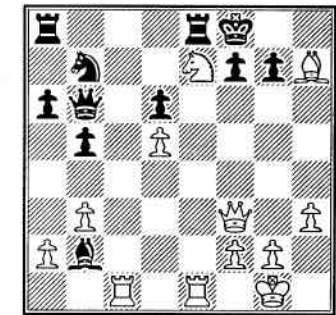
26...Rxe7

If 26...Bf6 27.Rxe7 Kxe7 28.Rc6 Qa5

NZ Chess

29.Qe2+ Be5 30.f4 with a clear advantage - beautiful! If 30...f6 the white squares are drastically weakened. So, tactically the move itself is justified, but what is the idea, why place it there? Well, I'm afraid I was totally dumbfounded at the time, and could not work out, at all, what he was up to.

27.♁g8!



A beautiful concept! At the time I was still very much bemused, in fact right to the finish of the game I found it difficult to comprehend the validity of having a knight on g8 and a bishop of h7. The basic strength in Ng8 is that it disrupts Black's defence by controlling two key squares, f6 and e7.

27...♗e5 28.♗c6 ♣a5 29.♗ec1 ♁d8

I was now in dire time trouble, and had to play all my moves almost immediately to move 40. And Solo had only 10 minutes left.

30.♗c7 ♣d2

Its amazing, despite the open board, how constricted Black's forces are, and how wonderfully co-ordinated (paradoxically enough, for me at the time) White's are. White has just about absolute control of the board.

31.g3 ♣g5 32.h4 ♣d2 33.♔g2 a5 34.♗1c2 ♣d4 35.♗g6??

I thought this was all White had, and Solo couldn't see anything better in the little time he had. However, simply 35...h5! with the idea of 30.h6 is amazingly strong, and there is nothing Black can do about it.

35...Kxg8 36.Bxf7+ Nxf7 37.Qxf7+ Kh8

13

NZCF Rating List for 2-2000 (521 players)

38.R2c4 bxc4 39.Qh5+ Kg8 40.Qf7+ drawn.

Well, I enjoyed that, how about you? ½-½

Hopewell,N (2122) - Bjelobrck,I (2034)

[C19] French Def., Winawer Var.

R 2, North Island Chp, Hamilton, 1999

1.e4 e6 2.d4 d5 3.♗c3 ♘b4 4.e5 c5 5.a3 ♗xc3+ 6.bxc3 ♗e7 7.♗f3 ♗d7 8.a4 ♖a5 9.♗d2 ♗bc6 10.♗b5 0-0-0 11.0-0 e4 12.♗c1 f6 13.♗a3 ♖xc3 14.♗c1 ♖a5 15.♗b1 ♗he8 16.♖c1 ♗f5 17.c3 h5 18.♗b2 ♖c7 19.h3 ♗a5 20.♗c5 ♗xb5 21.axb5 b6 22.♗b4 ♗b3 23.♗d2 ♗xd2 24.♖xd2 ♖f7 25.♗a1 ♗d7 26.♗a6 ♗b8 27.♖f4 ♗a8 28.♗ea1 ♗b7 29.♗c5 bxc5 30.b6 cxd4 31.cxd4 ♗xb6 32.♗xb6 g5 33.♖d2 fxe5 34.dxe5 g4 35.♗ba6 ♗b8 36.♗xa7 ♗e7 37.♗a8+ ♗c7 38.♗a1a7+ ♗c6 39.♗c8+ 1-0

Spiller,P (1969) - Hopewell,N (2122)

[A02] Bird's Opening

R 7, North Island Chp, Hamilton, 1999

1.f4 e5 2.b3 ♗f6 3.♗b2 e6 4.♗f3 b5 5.e3 a6 6.a4 bxa4 7.♗xa4 ♗b7 8.♗e2 ♗e7 9.0-0 d6 10.♗c3 ♖c7 11.f5 exf5 12.♗h4 g6 13.e4 ♗bd7 14.♗d5 ♗xd5 15.exd5 ♗e5 16.♗b5+ ♗fd7 17.♗xd7+ ♗xd7 18.♗f3 ♗f6 19.♖a1 ♗he8 20.♗xe5+ ♗xe5 21.♗h4 h5 22.♖a4+ ♗e7 23.♗xe5 dxe5 24.♗h3 ♗d6 25.♗a1 e4 26.♖c4 ♖b6 27.♖a4 ♖b5 28.c4 ♖xa4 29.♗xa4 ♗eb8 30.♗f2 ♗b6 31.♗a3 ♗ab8 32.♗c3 ♗e5 33.d3 ♗d4 0-1

Conrad Newick

Conrad Newick, whose death occurred while on holiday in Rarotonga at mid-year, was an active player in New Zealand during the 1930s and 1940s, and competed in four New Zealand Championships between 1937 and 1948. We have located one of his games, a win from Harold McNabb.

Conrad, who was 87, maintained his interest in chess throughout his life - in recent years through *New Zealand Chess* and on his computer.

He spent many years in Europe, and in the 1960s he played for West London. In Spain in the mid-70s he played for Malaga, and in one match against Granada he threw caution to the winds to win the crucial match-winning game.

Back in England in 1982 he won the club championship in Charlebury, in the Cotswolds.

In the early 1970s, during a period in Thailand with SEATO, Conrad also played Thai chess.

Conrad and his second wife, Anne, came to New Zealand in 1982 and settled in Whangarei.

Newick,C - McNabb,H

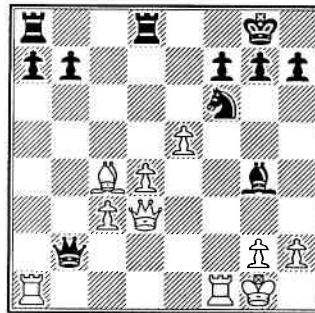
[B20] Sicilian Def, Wing Gambit

55th NZ Chp, Dunedin, 1948

Notes by R G Wade

1.e4 c5 2.b4 cxb4 3.a3 d5 4.exd5 ♖xd5 5.♗f3 ♗f6 6.axb4 e5 7.♗c3 ♖e6 8.♗b5 ♗d6 9.♗c4 ♖e7 10.♗b2 0-0 11.♗xd6 ♖xd6 12.♗xe5 ♗c6 13.f4 ♗xe5 14.fxe5 ♖xb4 15.0-0 ♖xb2 16.d4 ♗g4 16...♗e8 17.♗xf7 ♗xf7 18.♖f1 ♖xd4+ 19.♗h1.

17.♖d3 ♗fd8 18.c3



18...b5

18...♗d7 19.♗xf7 ♗h8 20.♗b1 ♖a3 21.♖g3.

19.♗xf7+ ♗xf7 20.♖xh7 ♗h8

20...♖xa1 21.exf6 ♖xf1+ 22.♗xf1 ♗xf6.

21.♗xf6+ ♗e7 22.♖xg7+ ♗d8 23.♗d6+ ♗c8

24.♖xg4+ 1-0

code	Stan Ga Rap Ga	52 3089 BENNETT HP	HA 1951 11 1985 5
1 5508 JWANG R	NS 2439 5 unr	53 4359 COATES S	CA 1945 12 1856 e
2 4989 KULASHKO A	AC 2395 17 2324 5	54 3253 MARNER G	WE 1941 16 1956 12
3 3383 KER AF	CI 2387 16 2313 6	55 5068 BEACH PK	AC 1938 22 unr
4 3459 DIVE RJ	WE 2378 22 2372 6	56 5488 WOJNAR J	WE 1936 24 unr
5 3088 SMITH RW	WT 2366 25 2286 11	57 3293 VAN GINKEL JP	NE 1930 1868
6 3002 GARBETT PA	NS 2351 10 2360	58 3162 SPILLER PS	HP 1922 1955
7 3003 SUTTON RJ	CI 2265 2266	59 5067 DAVIES RE	PT 1917 22 1769*
8 3460 DREYER MP	NS 2244 2238	60 4320 PHILLIPS J	WE 1914 9 1938
9 3314 MCLAREN LJ	NS 2234 16 2256 16	61 4393 DUNN AS	PT 1912 10 1757 5
10 3696 LUKEY SG	WE 2215 8 2200 6	62 4333 JACKSON LR	WE 1910 17 1785 12
11 3830 WASTNEY SC	GA 2210 13 2113 18	63 4027 RUPASINGHE SD	WE 1908 1890
12 3206 WATSON BR	NS 2204 24 2247	64 4691 LATIMER B	AC 1898 9 1915*
13 3199 GREEN PR	AC 2199 10 2230	65 3845 WINFIELD AW	WE 1895 16 1736
14 3007 GREEN EM	HP 2193 2104	66 3461 MULLAN AB	WE 1890 1528*
15 3009 WANSINK R	OT 2177 2207	67 3037 GIBBONS RE	GA 1889 6 1993
16 3005 STUART PW	NS 2172 10 2192 6	68 3411 SIMS MT	WE 1885 17 1759 12
17 4364 SINCLAIR M	PE 2169 2236 6	69 5486 SILVER D	WE 1883* 9 unr
18 3503 KER CM	PE 2145 8 2029 6	5402 SULAIMAN O	AC 1883 1876*
19 3176 LOVE AJ	OT 2137 2253 6	71 5008 SEREBRIANY D	CA 1880 1988*
20 4140 GORIS R	GA 2136 2001	72 5083 CROAD N	WE 1878 24 1881 6
21 4929 HARE TG	UH 2135 1973 12	73 3038 GOFFIN PB	AC 1874 unr
22 3507 HART R	NS 2120 9 2096	74 3665 GOODHUE N	WE 1871 13 1898 6
23 4190 GUTHRIE DW	WE 2113 27 2142 6	5537 SAKSANA K	AC 1871* 4 unr
24 3379 HOPEWELL NH	AC 2105 5 2123	76 5149 MACHINA A	WT 1870 16 1753 6
25 3041 METGE JN	PT 2102 2023	77 5383 HEREMAIA D	UH 1869* 1705* 6
26 4872 JB JELOBRK I	AC 2101 2035	78 3913 GILL G	AC 1864 1938
27 3482 SPAIN GA	GA 2097 5 2149	79 4740 MACDONALD P	AC 1863 1720*
28 3148 DOWDEN RA	OT 2094 2129	3648 MCDONALD JA	WE 1863 4 1847
3386 WHEELER B	AC 2094 12 2048	81 5019 FEENSTRA J	OT 1861 1829
30 3395 BOYD KM	OT 2093 8 2135	82 5127 JTRASS R	GA 1856 4 1881
31 3151 FREEMAN MR	WA 2086 2110	3986 VINCENT MB	OT 1856 1809
32 3350 COOPER DJ	WA 2078 2042	84 4176 HUDSON S	CA 1852 6 1581 6
33 3291 BARLOW MJ	NS 2065 2149	85 5155 STEPANOVIC S	1848* 1669*
34 3987 MCNABB M	CA 2062 36 1952 12	86 3434 HURLEY A	UH 1843 unr
35 3011 LEONHARDT W	NS 2054 2022	87 5431 CORKER K	1842* unr
36 3369 WALSH BG	HA 2052 1762*	88 4469 GILES BJ	NS 1837 8 1835 6
37 3558 DUNN P	WE 2049 18 1913 6	4467 MISTRY P	NS 1837 7 1923 6
38 3052 WEIR PB	NS 2037 1988	3550 VETHARANIAM PAR	
39 5104 KRSTEV A	NS 2029 15 2125 11	91 4360 RUSSELL T	WA 1837 1904
40 3977 ELLIOT DB	NS 2024 1988	92 4617 CUMMINGS NV	CA 1836 1900
41 3393 POST MJ	WA 2013 1874	93 3698 BLAXALL CS	CA 1835 2085
42 3394 NIJMAN BF	CI 2012 6 1927	94 3632 JOHNSON Q	HP 1831 1789
43 3526 ROBINSON JP	AC 2007 2060 3	95 3079 HOSKYN GA	CA 1830 1832
44 3013 POMEROY AJ	WE 2006 11 2051	96 3032 LYNN KW	WA 1823 1661
45 3454 SUTHERLAND JL	OT 1983 2023 6	97 5359 GLADKIKH A	HA 1811 6 1891
46 3617 VAN DER HOORN MW		3414 SCHWASS MP	CA 1809 1801*
	WE 1973 16 2051 6	99 4708 VAN DEN HEUVEL A	WE 1809 5 1893 6
	CA 1966 6 unr		
	AC 1963 19 1813		
	HP 1960 5 1907	100 3554 SINTON PJ	NS 1804 13 unr
	PT 1957 23 1786 5	101 5082 DONALDSON B	OT 1792 1811
	WA 1954 1874 12	4798 JHARTIGAN C	CA 1791 14 1527
			WT 1791 23 1462

103 4953 HENDERSON M	AC 1789	1862*	156 5498jKHITKO A	WE 1659*17	1368* 6
104 3238 CARTER GS	UH 1784	1752	157 4886jMACFARLANE A	WT 1658	1561*
5205 JOVANOVSKI S	1784*	1693*	5558 ST JOSEPH M	OT 1658*	8 1473* 6
3105 Sims IM	1784	1675* 6	159 3055 FOORD MRR	OT 1657	8 1597 5
107 3027 POWER PW	NS 1779*	1710*	5559 LAMBERT L	OT 1657*	8 1496* 6
108 5495 SHORT A	WA 1775*	1603*	161 4753 BARLOW A	WE 1655	12 1557
109 5337 JARINA MT	NS 1772*	1745*	4160 SADLER M	CA 1655	1390
110 4068 MACKWAY-JONES RA			3064 STRACY DM	WE 1655	1720
	IN 1766	1722	164 3368 CALDER RJ	WT 1651	23 1572
111 3259 BOOTH AJ	HP 1765	1509	165 4833jSAVAGE P	WE 1646	6 1662
112 3993 HAIR PI	NS 1763	12 1711 6	166 4466 BURN MR	GA 1643	1816
5484 RULIK O	CA 1763*	1395* 4	167 5490 HAMEED A	WE 1636*10	unr
114 4997 HUGGINS J	AC 1761	5 unr	168 4239 CRUDEN NB	GA 1634	5 unr
115 4656 TIDEY SB	WT 1760	1687	169 3268 KING PC	WE 1630	1647
1163028 HAASE GG	OT 1756	1782	170 3126 ADAMS JM	CA 1627	1602
5371 WOOD DA	CA 1756	14 1750 12	171 4871 GIBSON GM	AC 1622	1661*
118 3232 RAWNSLEY LD	HP 1753	5 1722	172 5208 TODD N	UH 1620	1422 6
119 3073 WILLIAMS BM	AC 1752	8 1698 12	173 4265 WYLIE MW	IN 1615	1561
120 5520 BLOOR P	WE 1751*	4 unr	174 5506 STEMMER U	CA 1613*12	unr
121 4931 MACLEOD S	HA 1746	1793	175 4580 BATCHELOR A	OT 1609	1791
122 4796 GOUDIE D	WT 1744	1598*	176 4302 DAVIS JM	GA 1608	1876 5
123 3412 ALDRIDGE AL	WE 1737	5 1861 6	177 4586 LE BROCCQ MJ	NS 1607	1628
124 5502 MILENKOVIC A	CA 1733*	6 unr	178 4766 CLARK C	HA 1604	1646
125 5070 EADE D	1732	10 1643* 5	4905jMUNROE DR	NS 1604	1502
5268jWANG PC	AC 1732	10 1775 5	5399 SMITH RG	HP 1604*	1590*
127 4361 FRASER C	CA 1731	1746	5504jWALLACE A	CA 1604*	6 959* 4
128 4575 TAUPAKI A	1728	4 1683	182 4704 BAY-PETERSEN O	NP 1598*	unr
5482 WELLS C	NS 1728*14	1859* 6	183 4252 HIMONA PJ	BP 1596	1805*
130 3633 BEESLEY RA	AC 1723	1731	184 4173 DUFFIELD T	OT 1595	1573
131 3218 BRIMBLE MT	WT 1722	16 1680 6	185 5076jCHENG H	NS 1593	5 1603 11
132 5130 BOARDMAN JF	WE 1720	9 1592 12	5487 WEINHOLD N	WE 1593*	unr
133 3635 GOODWILLIE C	CA 1719	12 1694* 6	187 4436 COGHINI P	CI 1592	1546
3204 LARK D	HP 1719	1649	3855 EMETT BG	NS 1592	695
135 5238 VITAL H	PT 1717	16 1715*	189 3258 HOWARD MI	NS 1590	1556 6
136 4196 WARD K	AC 1712	5 1717*	190 4859 PLACKIC T	1584	5 1575*
137 5137 JOVIC Z	WT 1710	1803	191 3194 FRANKEL Z	WE 1582	12 1802 6
138 4493jHARRIS P	WA 1707	14 1622 11	192 3103 MAZUR JJ	CI 1578	1666
139 3345 SMITH VJ	WT 1701	18 1732 11	193 3243 CAPPER DS	WE 1575	4 1675
140 5349jHAN D	1698	1500*	194 4243 LIM DH	AC 1573	1454
3072 NIJMAN AJ	CA 1698	14 1730 6	4692 STEINER M	AC 1573	9 1703*
142 4966 HALL C	CA 1688	12 1616	196 5032 KERRIGAN L	WT 1572	unr
143 3883 MORROW D	WT 1687	unr	197 4004 HEPERI DJN	OT 1571	8 1736 6
144 3117 CATER JE	WT 1682	1590	198 4087 BENSON C	CA 1568	unr
145 4451 NYBERG M	WE 1680	8 1773 6	199 4747 PUTT G	IN 1563	unr
146 3433 DAVIES G	CA 1676	12 1681	200 5024 TUMAI A	HA 1560	1706
147 3351 DOLEJS DE	GA 1673	1638	201 5334 HANNA G	CA 1558	1613*
148 3054 GLOISTEIN B	CA 1672	8 1649	5403 SUKHOLININ V	AC 1558	1748*
149 5197 GUNN NJ	NS 1670	8 1754 6	203 4844jSIMPSON DJW	NS 1555	1686 6
150 3180 FROST EGA	WA 1669	1611	204 5225 NICHOLSON S	CA 1553	1644
4367 ROSSITER PE	HA 1669	5 unr	205 4754 EVANS T	NS 1552	5 1594 6
152 4136 KOIA A	WE 1665	12 1486 5	3798 GOLD HR	OT 1552	15 1689 11
153 3618 EDWARDS RE	WE 1662	5 1627 6	207 5060 PARTRIDGE D	CA 1548	1447
154 3927 FORSTER W	CI 1661	1409*	208 3965 BENNETT RH	WT 1547	1540
155 4885 GODFREY P	WT 1660	28 1828 6	4097 SCARF R	AS 1547	1660

210 5489jMOU
211 4709 POC
212 4661 WIL
213 4865jAH
215 4903 PAK
216 3962 WIL
217 4468 DAL
218 4234 JOH
219 4141 PAL
3612 YOU
221 5423 LAW
4601 VO
223 3328 SNE
224 3929 SOL
225 3168 BEL
226 4344 MIL
227 5047 WRI
228 3227 DRA
229 4826 KER
230 5552 PHI
231 3996 DEV
5245 RA
233 4472 WIL
234 5433 GAL
235 3302 BOJ
5485 PE
237 4147 HOC
3926 RE
239 5124jTR
240 4409 GIL
241 5329 GE
242 4651 CO
4695 TS
244 4357 KIN
4938 UR
246 5444jDO
247 3816 OTE
248 4164 FAR
249 3862 MIL
250 4044 MC
251 5319 DAS
252 4210 TAN
253 3107 PRE
254 5342 JEC
256 4935 WIL
257 5395jAL
3974 GIL
5272 HAR
260 4922jJA
261 5405 MAR
262 4480jCH
263 5397 UT
264 5400 AL

WE 1659*17 1368* 6	210 5489jWOJNAR M	WE 1544 29 1691* 6	5445jLOH IML	1407* unr
WT 1658 1561*	211 4709 POCOCK GW	GA 1540 14 1609 5	266 4996 FROST LB	AC 1406 1223*
OT 1658* 8 1473* 6	212 4661 WILSON JC	WA 1538 1321*	267 4723 POLLARD B	WT 1403 18 1549 6
OT 1657 8 1597 5	213 4865jAH-CHEE ML	AC 1537 1505*	4508 STEWART J	WA 1403 1329
OT 1657* 8 1496* 6	215 4903 PAKENHAM J	AC 1535 1633	269 3895 BANNISTER C	OT 1400 1337
WE 1655 12 1557	216 3962 WILSON C	PT 1534 5 1590	5333 JACOBS H	NS 1400 9 1590*
CA 1655 1390	217 4468 DALE CL	NS 1532 10 unr	5509jSHATALIN S	1400* 5 unr
WE 1655 1720	218 4234 JOHNS DP	NS 1528 4 1756	272 4614 GOECKEL H	GA 1392 1320*
WT 1651 23 1572	219 4141 PALMER BP	WT 1527 1599	273 3045 TRUNDLE GE	GA 1391 1446
WE 1646 6 1662	3612 YOUNG P	AC 1527 5 1536*	3901 VAN ZOOMEREN J	OT 1391 1454
GA 1643 1816	221 5423 LAWS T	GA 1526* 1203*	275 4964 DAWES G	CA 1389 12 1410*
WE 1636*10 unr	4601 VOSS PJ	GA 1526 unr	4011 WHITAKER B	AC 1389 1382
GA 1634 5 unr	223 3328 SNELSON PR	NS 1525 1598 6	277 4071 MCGURK A	IN 1386 1280
WE 1630 1647	224 3929 SOUTHGATE B	WE 1524 5 1434	278 4182 REID DM	OT 1384 8 1216
CA 1627 1602	225 3168 BELL DI	WA 1521 1460	279 5235jLIN J	WT 1383 15 1340*
AC 1622 1661*	226 4344 MILLAR BW	GA 1517* 1617	280 5522 WELSFORD R	CA 1381* 8 unr
UH 1620 1422 6	227 5047 WRIGHT C	GA 1512 8 1367*	281 4602 BELL G	1379 1476
IN 1615 1561	228 3227 DRAKE AS	UH 1500 1580 6	282 4666 MARTIN O	AC 1378 1434
CA 1613*12 unr	229 4826 KERRY J	WT 1499 1507	283 4096 KEELING RL	AS 1377 1500
OT 1609 1791	230 5552 PHILEVA I	AC 1498*15 unr	284 4751 MOORE J	WE 1373 1445
GA 1608 1876 5	231 3996 DEVLIN S	NS 1493 1707*	285 3902 STONE RG	OT 1370 1455
NS 1607 1628	5245 RAMANAKUMAR S	AC 1493 1754*	286 3888 NEAL RM	WT 1368 5 1532
HA 1604 1646	233 4472 WILLIAMS K	HP 1490 1514	287 4789 MADDREN W	WA 1365 1377*
NS 1604 1502	234 5433 GALEWSKI E	HA 1489* unr	288 3322 BALDWIN PA	NS 1362 1262
HP 1604* 1590*	235 3302 BOJTOR J	HP 1485 1559	289 4031 AIDAN A	AC 1358 5 1318*
CA 1604* 6 959* 4	5485 PETROVIC N	CA 1485* unr	290 5152 COWPERTWAIT P	NS 1354 1441*
NP 1598* unr	237 4147 HOOTON BR	PT 1480 1438	4891 GRACE B	UH 1354 1245* 6
BP 1596 1805*	3926 REID A	UH 1480 unr	5417 KUCH M	CI 1354* 1629*
OT 1595 1573	239 5124jTRASS C	GA 1479 1520	293 5115 BRADDOCK J	UH 1353 unr
NS 1593 5 1603 11	240 4409 GILMARTIN J	CI 1473 1375*	294 4327 ATKINSON J	CA 1351 12 1502
WE 1593* unr	241 5329 GEORGE A	NS 1470* 1545	295 4730 WONG D	WT 1348 21 1440 6
CI 1592 1546	242 4651 COOK J	WE 1465 10 1384	296 5222jWILSON J	WE 1343* 5 unr
NS 1592 695	4695 TSEUNG JCO	AC 1465 5 1371	297 5492 BAYLISS D	AC 1341* unr
NS 1590 1556 6	244 4357 KINGSTON ZH	KP 1460 7 1444 6	298 5071 HROMIC HM	NS 1337 1398
1584 5 1575*	4938 URBANSKI Z	AS 1460 1565	5305jPEARSON D	CA 1337 1472*
WE 1582 12 1802 6	246 5444jDOLLIE Q	AC 1458* unr	5519 PLACKIC V	WE 1337* 5 unr
CI 1578 1666	247 3816 OTENE EA	AC 1456 5 1406	301 5394 GENCTURK M	1336* 1398*
WE 1575 4 1675	248 4164 FARRINGTON LB	WE 1455 16 1634 5	302 5063 COOZE B	HH 1333 1237 6
AC 1573 1454	249 3862 MILNE DJO	NS 1451 1503	4786 RITCHIE A	OT 1333 1370
AC 1573 9 1703*	250 4044 MCINTOSH J	OT 1442 1517	304 3092 MEARS GW	NS 1331 1436 6
WT 1572 unr	251 5319 DASH G	WE 1441* 1397*	305 5360jHEREMAIA J	UH 1330* 1570* 6
OT 1571 8 1736 6	252 4210 TANGI TJJ	AC 1431 unr	306 5294 BRUCE M	KP 1326* 1237*
CA 1568 unr	253 3107 PRESTON JN	IN 1424 1277	307 4481jCHILVERS M	HP 1322 1384
IN 1563 unr	254 5342 JEONG CU	AC 1422 10 1358* 5	308 3796 CLARKSON RD	1319 8 1306
HA 1560 1706		427*	309 4679 TIBBLE A	WT 1316 5 1138*
CA 1558 1613*	256 4935 WIN KS	UI 1419 8 1390	310 5512 COSSEY A	1315*10 unr
AC 1558 1748*	257 5395jALAFa'APAE M	AC 1418 15 1353* 5	3349 STEWART BK	1315 5 1411
NS 1555 1686 6	3974 GILLESPIE JG	WE 1418 16 1466 12	312 4889jSWEETSUR P	GA 1311 10 1363*
CA 1553 1644	5272 HARISH R	WT 1418 22 1308*	313 4564 LANG M	IN 1309 1513
NS 1552 5 1594 6	260 4922jJADALLAH I	OT 1417 1597	314 3288 BOWLER RP	NP 1307 5 1487
OT 1552 15 1689 11	261 5405 MARTIN P	AC 1413 5 unr	5435 TELFAR M	WE 1307 5 unr
CA 1548 1447	262 4480jCHILVERS C	HP 1410 1360	316 4590 ROWELL T	OT 1306 1469 6
WT 1547 1540	263 5397 UTAI R	1409*10 1369* 5	317 5424jASHRAFI A	WT 1301* unr
AS 1547 1660	264 5400 ALAFa'APAE W	AC 1407 15 1405* 5	3144 PARLANE LN	GA 1301 1111*

5553 PINDUR E	1301* 5 unr	373 5408 WONG SY	NS 1180* 1356	427 4916
3357 SPENCER-SMITH PA		374 5505 VAN SCHOUTEN J	CA 1173*12 1073* 6	428 5442
	NS 1301 5 1509 6	375 3074 MORRISON MK A	1172 1431	429 5429
321 4702 PORTER A	PT 1294 5 unr	4668 VAN DEN BOSCH K		430 4956
322 5469 STIERAND R	PT 1293 15 1334*10		HP 1172 5 1402	431 4873
323 5347 JYANG J	1288* unr	377 5406 JHODGKINSON BP	NS 1167 unr	432 4607
324 4852 NICOLL A	HP 1286 5 1308*	5117 SMITH R	UH 1167 unr	433 5415
325 3788 MILLS G	KP 1283 7 1420 6	379 3267 WEBBER CH	UH 1166 1208 6	434 4782
326 5304 PEARSON G	CA 1281 11 1210 6	380 4519 ALLPRESS K	1164 1357*	435 5481
327 4406 STREET S	WA 1279 unr	5369 SHEARING S	WT 1164 unr	436 5434
328 3136 BARTOCCI KDF	AC 1275 9 unr	382 5453 JONES S	NS 1163* 1270*	435 5481
329 5436 JIANG C	WT 1272 unr	383 4957 WOOD P	AC 1158 4 1320*	436 5434
4058 LOOS R	CA 1272* 1568*	384 3532 MCRAE JH	PT 1157 5 1188 5	437 5459
3365 WINSOR BM	NS 1272 1420 6	385 5357 RUSSELL P	PT 1154* unr	438 5479
332 4354 BACKHOUSE C	UH 1266 1318 6	386 5340 O'NEILL D	WH 1152* unr	439 5464
5493 MAROROA T	AC 1266 5 unr	387 5307 JJEFFREYS M	CA 1149 12 1276 6	440 5239
334 5228 JPEARCE R	CA 1265 6 1415*	388 4742 JUDKINS GL	GA 1146 15 1455 10	441 5323
335 5404 GRACE A	1257* unr	389 5560 MOORE T	OT 1132* 8 unr	442 5494
4718 KESSELER AJ	AC 1257 1298	390 5413 TERRY L	NS 1126* 1361	
337 4934 TUATINI M	GA 1254* 874*	391 3312 JONES GM	NS 1125 5 1293	443 5446
338 3854 WAGSTAFF GC	NS 1253 1442 6	392 4640 ARANUI G	CA 1122 1301*	444 5521
339 4314 MILLANO A	PT 1251 1254	4780 MAC J	CA 1122 12 1258 4	445 5427
340 4527 MCGOWAN A	KP 1249 1527 18	394 5422 DEVERALL J	CI 1119* 1164*	446 4827
341 4774 EDWARDS C	PT 1248* unr	395 3187 NEWMAN B	UH 1116 1131 5	447 5510
342 5188 FOOTE R	AC 1246 unr	396 5274 WILSON A	WT 1115 868*	448 5443
5108 POTINI G	1246* 1442 6	397 4950 LANG I	IN 1114* unr	449 5378
344 5147 ABSALAM M	AC 1242* 5 unr	398 5511 HOUPAPA P	PT 1110* 4 unr	450 5462
345 3304 GREVERS LP	NS 1240 1274 6	4690 PAGE A	AC 1110 1161*	451 4896
346 5412 RUDKINS L	NS 1239* 1143 6	400 4264 STEPHENS RC	UH 1100 1094*	452 5465
347 4450 FORREST K	WA 1235 unr	401 5554 MAYNE A	1098* 5 1404* 5	453 5416
5331 GEORGE R	NS 1235* 1393	4768 TE KANI S	HA 1098 1149	6
349 5457 KAY P	CA 1234 12 1063* 6	403 5461 GAINES R	CA 1096*11 1222* 5	454 5448
5387 OSBORNE R	WT 1234 18 1375* 6	404 5426 JBAJWA A	WT 1095 5 unr	545
351 5136 JHALL PJ	OT 1228 1533	405 5382 CRUMMEY S	CA 1092* 861*	456 5085
3431 VAN DER MEY PF	NS 1228 1394 6	406 3320 HIPKINS B	AC 1091 4 1399*	457 5455
353 5425 FRANCIS J	1227* 5 unr	5338 SULLIVAN AV	NS 1091* 5 1033*	458 5089
354 4054 COURTNEY HK	GA 1220 11 1241 10	408 4918 GALLETLY D	OT 1087 1488	459 5501
355 5112 GOTHORP THT	GA 1219 12 1274 10	409 5385 BOTES P	WT 1085 unr	460 5441
5198 RUTHERFORD RI	NS 1219* 1311	410 5438 JLEE L	1083* unr	461 5428
357 5345 JLIN H	1214* 3 1135*	411 5242 RYLAND J	WA 1082 unr	462 5384
358 4835 JOHNSON JS	1213 1112*	412 5447 JKUHN A	WA 1077* 1316* 5	463 5440
359 4518 JONES A	WT 1212 16 unr	5116 ORR W	UH 1077 1151* 6	464 5466
4980 VARGA S	HP 1212 1284	414 4727 ARNOLD R	WT 1072 11 999*	465 5376
361 5451 ENRIQUE G	WT 1211 17 1063* 1	415 4308 BOEKHOLT E	UH 1070 1140 5	466 5449
5437 JWONG D	1211* unr	5196 CLOETE D	NS 1070 1348 6	467 5470
363 4498 CLARK BK	SP 1208 2 1587	417 5030 JWHITEHOUSE RJ	NS 1069* 4 1306 6	468 5496
5507 FORT C	CA 1208*10 1277* 6	418 3250 RAWNSLEY DC	HP 1068 1175	469 3317
365 5491 GOBBI M	WE 1201* 4 unr	419 3134 CAMERON D	OT 1064 1242	470 5409
4776 STEVENSON M	CA 1201 12 1223 12	5503 JQI M	CA 1064* 4 unr	471 5480
367 5460 DAWSON P	CA 1200*10 1098* 6	421 4598 YORSTON KL	WA 1063 unr	472 5401
368 3354 GARLAND M	WT 1195 1403	422 4904 SWEETSUR M	PT 1055*10 1373*	473 5418
369 5216 NGUYEN T	UH 1194* 1166* 6	423 4726 BRITTEN R	WT 1054* unr	474 5330
370 5035 PRASAD L	WE 1191 9 1064*	424 5439 JLUEN M	1049* unr	475 5517
371 5414 BUTLAND S	AC 1188 5 1067*	425 5240 BOWDEN P	UH 1048 1238* 6	476 5497
372 4947 SANGHA DS	WA 1182 unr	426 5556 KOVACEVIC J	1042* 5 unr	477 5289

NS 1180* 1356
CA 1173*12 1073* 6
1172 1431

HP 1172 5 1402
NS 1167 unr
UH 1167 unr
UH 1166 1208 6
1164 1357*
WT 1164 unr
NS 1163* 1270*
AC 1158 4 1320*
PT 1157 5 1188 5
PT 1154* unr
WH 1152* unr
CA 1149 12 1276 6
GA 1146 15 1455 10
OT 1132* 8 unr
NS 1126* 1361
NS 1125 5 1293
CA 1122 1301*
CA 1122 12 1258 4
CI 1119* 1164*
UH 1116 1131 5
WT 1115 868*
IN 1114* unr
PT 1110* 4 unr
AC 1110 1161*
UH 1100 1094*
1098* 5 1404* 5
HA 1098 1149
CA 1096*11 1222* 5
WT 1095 5 unr
CA 1092* 861*
AC 1091 4 1399*
NS 1091* 5 1033*
OT 1087 1488
WT 1085 unr
1083* unr
WA 1082 unr
WA 1077* 1316* 5
UH 1077 1151* 6
WT 1072 11 999*
UH 1070 1140 5
NS 1070 1348 6
NS 1069* 4 1306 6
HP 1068 1175
OT 1064 1242
CA 1064* 4 unr
WA 1063 unr
PT 1055*10 1373*
WT 1054* unr
1049* unr
UH 1048 1238* 6
1042* 5 unr

427 4916 JACKSON MD NS 1034 5 1323
428 5442jASHRAFI DR 1030* unr
429 5429jASHRAFI D WT 1027* unr
430 4956 YEATTS T AC 1023* 1229*
431 4873 HERRING M 1016* 1120*6
432 4607 VAN STRATEN D NS 1015 1176
433 5415jYAO S NS 996* 1139 6
434 4782 COOK E CA 975 1153
435 5481jWHARAM C NS 974* 4 unr
436 5434 VAN LOKVEN P IN 956* unr
435 5481jWHARAM C NS 974* 4 unr
436 5434 VAN LOKVEN P IN 956* unr
437 5459 WINDER S CA 946* 1305*
438 5479jGAO P WT 944* 51402*
439 5464jMAGUIRE D CA 940*5 1140*6
440 5239 BRUCKER G UH 935 969* 6
441 5323jZAZA M NS 925* 1071*
442 5494 ALAFA*APAE M
AC 914* 4 unr
443 5446jCUMMING R NS 901* unr
444 5521 ROSE T WT 895* 6 unr
445 5427 LANE V AC 889* unr
446 4827 COLLINGWOOD G WT 878 16 1161 6
447 5510jCHANG S 876* 4 unr
448 5443jDOLLIE U AC 852* unr
449 5378 CROSBIE C WA 833 unr
450 5462 KLUGE B CA 830* 1163*
451 4896 ROUNTHWAITE T WT 819 21 1005 5
452 5465 CAINES R CA 795* unr
453 5416 EARLLY JK NS 794* 4 1057
6
454 5448 JEFFERIES C WA 771* unr
5450jKUHN T WA 771* unr
456 5085 HAXTON D WA 764 unr
457 5455jCAI S NS 735* 935*
458 5089 HURLEY D WA 714 unr
459 5501 GRAY I CA 709* 5 unr
460 5441jEDMONDS R 699* unr
461 5428jYANG J 694* unr
462 5384 OSBORNE E WT 679 848*
463 5440jJEYARAJAH NJ 669* unr
464 5466jO'DONNELL M CA 568* unr
465 5376 OLIVER J WA 486 936*
466 5449 FLEET N WA 377* unr
467 5470 PEARCE RJ unr 1982*
468 5496 WHALEY MG NS unr 1930*
469 3317 PETCH WH OT unr 1781*
470 5409 GWYNN D PN unr 1732*
471 5480 MARIC M NS unr 1664* 6
472 5401 BELSHAM DM unr 1650*
473 5418 HAW M unr 1634*
474 5330 TUAPAWA J unr 1568* 6
475 5517 MCKERRAS R CA unr 1527* 6
476 5497 POCOCK M NS unr 1481* 6
477 5289 NEDELJKOV S unr 1438*

478 5080jALLEN-URBANSKI J
AS unr 1437
479 5419 STOJMIROVIC A WE unr 1421*
480 5518 FRAEMOHS P CA unr 1402* 6
481 5530 BRADLEY E KP unr 1356* 6
482 5192jSMITH J PN unr 1349*
483 5500 MARSH H KP unr 1338* 12
484 5531 HACKSHALL N HA unr 1329* 10
483 5500 MARSH H KP unr 1338*12
484 5531 HACKSHALL N HA unr 1329*10
5410 NEWBOULD A OT unr 1329*
486 5213 DAVEY D PN unr 1315*
487 5458 HAWES A CA unr 1291*
488 5310 TAIRUA P HA unr 1272* 5
489 5471jGUU J HA unr 1243*12
490 5421 O'ROURKE M KP unr 1232 11
491 5499 MANIHERA M unr 1204* 6
492 5472jMANIKKAM B HA unr 1165*
493 5159 FORD C KP unr 1156*
494 5561 PHIPPS M OT unr 1152* 6
495 5396jOEHLLEY M unr 1147 7
496 5420 FRASER A KP unr 1144*
497 5291jHAN W HP unr 1139*
498 5474jCHO J HA unr 1131*12
499 5513jPESKIN S CA unr 1126* 6
500 5287jWARD J HA unr 1087 12
501 5533jPHILLIPS C HA unr 1081* 4
502 5456 JAMES S unr 1059*
503 5467 GUEVARA J unr 1026*
5411 WILSON C NS unr 1026*
505 5473jCOON J HA unr 1012*
506 5483 RILEY J NS unr 997*
507 5538 WELLS D CA unr 995* 5
508 5286jDARCH C unr 990
509 5543jKELTON W HA unr 981* 7
510 5288jJUDKINS T unr 966 12
511 5475jMCKAY I HA unr 955* 4
512 5532jROBERTSON B HA unr 935* 4
513 5534jPRIEST D HA unr 921* 4
514 5536jSINGH N HA unr 893*12
515 5514jJONES C CA unr 847* 5
516 5398 BELSHAM M unr 812*
517 5542jWELLS M HA unr 753* 7
518 5476jHOLLAND M unr 739*
519 5535jFISHER B HA unr 655* 4
520 5516 MILDON G CA unr 615* 5
521 5477jBRETHERTON R HA unr 570*

*Top 20, Top women, Top juniors, etc, will
be listed in next issue.*

Correspondence chess

By Gordon Hoskyn

Calling all chessplayers!

The New Zealand Correspondence Chess Association is currently conducting a membership drive, and is seeking new/old players of all ages and abilities to take part in its 20001-2002 competitions.

Play is possible in three types of tourneys, trophy, handicap and certificate. Experienced directors of play are on hand to receive your entry and to place you in the tournaments of your choice.

Postal chess is not all that expensive, and is cheaper than many other sports. Postages and subscriptions have not risen for a number of years.

Modern technology has increased the speed of play considerably. Many players now play by fax or email. Alternatives are the normal postal system and if both players live in the same city, telephone. You and your opponent choose which suits best.

Different grades are available for different playing strengths. Correspondence is a wonderful, satisfying way to play the fascinating game of chess.

Enquiries and entries to Sandy Maxwell, PO Box 3278, Wellington, phone (04)237-4753; or Gordon Hoskyn, 7 Pehi Street, Wanganui, phone (06)343-6101.

Have a go! Join up now!

Trophy tourney progress

The 67th New Zealand Championship is headed for a very tight finish. One and a half points, perhaps only one point, could separate the top six finishers. 7.5 points will probably win the tournament. 7 points could result in a multiple tie.

Allan Short finished his games early, recording 7, and now is watching and waiting to see if he can be overtaken.

Peter Goffin is heading for 7, possibly 7.5, if he can squeeze a win against Hilton Bennett.

Earl Roberts is also looking at 7, perhaps 7.5, if he can beat Tim Doyle.

Murray Dunwoody, Gordon Hoskyn and Bob Smith are in the vicinity of 6 - 6.5 scores.

Last year's winner, Doyle, is struggling and is yet to record a win. Six points may be his max.

In the TT Reserve Jeff Rapp is setting a hot pace with 7/7. Viv Smith is one point behind, with half a point to Ted Frost. For an upset look to Bruce Gloistein, who has 1/3.

Handicap tourney D.O.P. Phil Coghini leads the TT2 field with 8/9. Zoe Kingston and Peter King are the challengers, one point adrift.

In TT3 Rod Weston and Steve Cameron have 100% scores, but Weston has played the most games.

Progress scores in the 2000-2001 Trophy Tourneys are (as at 30-11-00):

67th NZCCA Championship: A J Short 7/10, G A Hoskyn 6/9, E N Roberts 5.5/8, R W Smith 4.5/7, P B Goffin 4/6, M L Dunwoody 3.5/5, P J Voss 2.5/7, H P Bennett 2/6, B W Millar 1/8, T J Doyle .5/3, P A R Vetharanim .5/5. Latest results: HOSKYN beat Millar, Doyle. ROBERTS drew Smith. GOFFIN beat Millar. BENNETT beat Millar. SMITH beat Vetharanim.

Reserve Championship: J C Rapp 7/7, E G A Frost 5.5/7, V J Smith 4/5, B J Edwards 4/7, K G Reed 3/5, B M Williams 1.5/6, B N Gloistein 1/3, G E Lovelock 1/4, D R Whitlock 1/4, C A Mold 1/6, D E Dolejs 0/4.

TT2: P G Coghini 8/9, P C King 7/9, Z H Kingston 6/8, H Goeckel 5/9, W Anderson 4.5/8, A N Hignett 2/11, A Clark 0/12.

TT3: R J Weston 7/7, S M Cameron 4/4, A W Hendry 3/5, P E Rossiter 2.5/4, L I Purvis 2/4, G H Mills 1.5/6, S A Holdaway 1/2, J A Clarke 1/3, S R C Chowdhury 0/8.

Championship games

This issue's two games come from the current championship.

Last December this column published a game between Hilton Bennett and Peter Voss. The opening was a King's Bishop

Gambit and was won by White. Now, 12 months later, the following game features the same players, with the same colours, with the same opening, but this time Black comes out on top.

Bennett,H - Voss,P

[C33] King's Gambit, Bishop's Gambit
NZCCA 67th Championship

Notes by Peter Voss

1.e4 e5 2.f4 exf4 3.♗c4 d5 4.exd5

BCO suggests 4.Bxd5.

4...♗h4+ 5.♔f1 ♗d6 6.♗c3 ♗e7 7.♗e4 0-0
8.d4 ♗f5 9.♗xd6 cxd6

9...Nxd6 would have weakened the attack.

10.♗d3 g5 11.♗f3 ♗h6 12.♔g1 g4 13.♗e1

White's pieces are gradually being shut out of active play., e.g., 15.Bb3 and 16.Qb5.

13...♗e8 14.♗d2 ♗e3 15.♗b3 ♗f5 16.♗b5 ♗d7
17.g3 ♗f6 18.♗xe3 ♗xe3 19.♗g2 f3 20.♗f4

The Black R on e3 is immune from capture.

20...♗ae8 21.♗b4 ♗e2 22.h4 gxh3 0-1

Game 2 is between Peter Goffin and Tim Doyle and was won by White. Black's 12th move is an amazing blunder for a NZCCA champion to make, as its all known analysis from Chess Archives, published by Netherlands Magazine, editor at the time, Max Euwe.

Goffin,P - Doyle,T

[B77] Sicilian Def, Modern Dragon Var.
NZCCA Championship, 2000

Notes by Peter Goffin

1.e4 c5 2.♗f3 d6 3.d4 cxd4 4.♗xd4 ♗f6 5.♗c3
g6 6.f3 ♗g7 7.♗e3 0-0 8.♗d2 ♗c6 9.♗c4 ♗d7
10.h4 ♗c8 11.♗b3 ♗xd4

This variation was extensively analysed during the middle 60s by Chess Archives. White defers queenside castling and instead plays h4, gaining an important tempo. Black has two other possibilities here, 11...Ne5 and Na5, the latter being the poorer option. The a4 square is needed for the black queen.

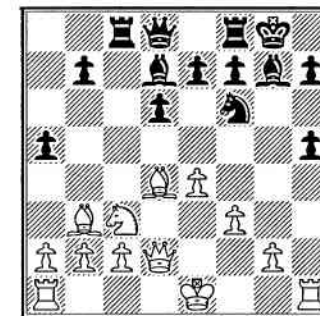
12.♗xd4 a5??

This loses the game. Black should play Qa5, then White has to decide between 0-0-0, transposing into known territory, or venture forth to war with g4.

13.h5!

This move blows Black off the board. Black obviously did not see this possibility.

13...gxh5



14.♗d5 ♗xd5 15.♗xg7 ♗xg7 16.♗xd5 h6
17.♗xh5 ♗h8 18.0-0-0 ♗c7 19.♗dh1 f6
20.c3 e6 21.♗xh6 ♗xh6 22.♗xh6+ 1-0

Wohl at Knockout Championships

Alex Wohl, winner of the Oceania zonal played in Auckland early in the year, competed in FIDE's world knockout championships, which have just been played in India and Iran. He did not survive the first round, losing to Alexander Gulkin RUS, 0-2. Here is their second game:

Galkin,A (2587) - Wohl,A (2461)

R 1, G 2 2000 World Chess Ch, India
B40 Sicilian Defence, Classical System

1.e4 c5 2.♗f3 e6 3.d4 cxd4 4.♗xd4 ♗c5 5.♗c3
♗c6 6.♗b3 ♗b6 7.♗b5 ♗h4 8.♗d6+ ♗e7 9.g3
♗f6 10.f4 h5 11.♗c4 ♗c7 12.♗e3 b6 13.♗d2
♗g6 14.♗g2 ♗f6 15.e5 ♗d5 16.0-0-0 ♗a6
17.♗xd5 exd5 18.♗xd5 ♗xc2+ 19.♗xc2 ♗b4+
20.♗c3 ♗xd5+ 21.♗xd5 ♗ac8 22.♗hd1 h4
23.♗b4 hxg3 24.hxg3 ♗e6 25.♗d6 ♗xd6+
26.♗xd6+ ♗f5 27.♗xd7 ♗c4+ 28.♗a3 b5
29.♗c5 1-0

Kasparov v Kramnik match

By NM Peter Stuart

The Braingames World Championship match between Gary Kasparov and Vladimir Kramnik took place in London in October/November. Given a modest decline in Vishy Anand's results of late it is fair to claim that the world's two strongest players were on show here, whatever the alternative claims to who the real world champion might be, if indeed there is such an animal. The match was for the best of 16 games with Kasparov (the holder) retaining the title in the event of a draw.

Kramnik is the player who has given Kasparov the most trouble in recent years so, although Kasparov's rating advantage had to make him the favourite, I think it is fair to say that an upset was considered more likely this time than in the previous matches versus Short and Anand.

The Kasparov team of seconds comprised Yuri Dokhoian, Andrei Kharlov, Mihail Kobalija and Andrei Shakharov while Kramnik's more cosmopolitan team comprised Evgeny Bareev, Joel Lautier and Manuel Illescas.

Kasparov won the toss for colours and he commenced the first game with 1.e4, being met with a surprise in the form of the Berlin Defence to the Ruy Lopez. The variation chosen by Kramnik did not look particularly flash but it had what turned out in this match to be a major virtue for him - the early exchange of queens. Precise defence brought him a half point in 25 moves.

Game 2: first blood! Kramnik's 1.d4 was met by the Grünfeld and the game went down a line which was often employed by Anatoly Karpov in earlier world championship matches against Kasparov. The game eventually reached a rooks and opposite colour bishop ending with only a few pawns remaining. Kramnik had an edge and was certainly making Kasparov suffer, especially on the clock. In the end Kasparov blundered on move 39 in severe time trouble, allowing his opponent a winning pawn ending.

Kramnik, V - Kasparov, G Game 2 [D85] Grünfeld Def.

1.d4 ♖f6 2.c4 g6 3.♗c3 d5 4.cxd5 ♗xd5 5.e4 ♗xc3 6.bxc3 ♘g7 7.♗f3 c5 8.♗e3 ♖a5 9.♗d2 ♘g4 10.♖b1 a6 11.♗xb7!

Previously thought to be inferior but Kramnik has done his homework.

11...♗xf3 12.gxf3 ♗c6 13.♗c4 0-0

Black can always regain the pawn but after 13...cxd4 14.cxd4 ♗xd2+ 15.♗xd2 ♗xd4 16.f4 White has the bishop pair and a very active rook.

14.0-0 cxd4 15.cxd4 ♗xd4!

15...♗xd2 16.♗xd2 ♗xd4 17.♗g2 again favours White.

16.♗d5 ♗c3?

Better was 16...♗xd2 17.♗xd2 ♗e5 18.♗g2 e6 19.♗b3 ♖fb8 when Black is better off than in previous lines with Qxd2 - his rooks are activated and his minor pieces are well placed.

17.♗c1 ♗d4 18.♗xd4! ♗xd4 19.♖xe7 ♖a7 20.♖xa7 ♗xa7 21.f4 ♗d8

21...♗c5 22.♗xc5 ♗xc5 23.♖b1 and, with the better rook, White has practical chances.

22.♗c3 ♗b8 23.♗f3 ♗h4 24.e5 g5! 25.♖e1! ♗xf4 26.♗xf4 gxf4 27.e6 fxe6 28.♖xe6 ♗g7 29.♖xa6 ♖f5 30.♗e4 ♖e5 31.f3 ♖e7 32.a4 ♖a7

Correct was 32...♗a7+ with the idea of Be3 and only then Ra7. Either way, though, it seems Black should be able to draw.

33.♖b6 ♗e5 34.♖b4 ♖d7 35.♗g2 ♖d2+ 36.♗h3 h5 37.♖b5 ♗f6 38.a5 ♖a2 39.♖b6+ ♗e7??

39...♗g7

40.♗d5

40...♖xa5 41.♖c6+ ♗d7 42.♖xe5 ♗d6 43.♖xh5 reaches a winning pawn ending. 1-0

Game 3 saw Kasparov with chances but Kramnik escaped from the time scramble intact and held the draw:

Kasparov - Kramnik R 3 [C67] Ruy Lopez

1.e4 e5 2.♗f3 ♗c6 3.♗b5 ♗f6 4.0-0 ♗xe4 5.d4 ♗d6 6.♗xc6 dxc6 7.dxe5 ♗f5 8.♗xd8+ ♗xd8 9.♗c3 ♗d7 10.b3 h6 11.♗b2 ♗c8 12.♖ad1 b6 13.♗e2 c5 14.c4 ♗c6 15.♗f4 ♗b7 16.♗d5 ♗e7 17.♖fel ♖g8 18.♗f4 g5 19.♗h5 ♖g6 20.♗f6 ♘g7 21.♖d3 ♗xf3 22.♖xf3 ♗xf6 23.exf6 ♗c6 24.♖d3 ♖f8 25.♖e4 ♗c8 26.f4 gxf4 27.♖xf4 ♖e8 28.♗c3 ♖e2 29.♖f2 ♖e4 30.♖h3 a5 31.♖h5 a4 32.bxa4 ♖xc4 33.♗d2 ♖xa4 34.♖xh6 ♖g8 35.♖h7 ♖xa2 36.♖xf7 ♗e5 37.♖g7 ♖f8 38.h3 c4 39.♖e7 ♗d3 40.f7 ♗xf2 41.♖e8+ ♗d7 42.♖xf8 ♗e7 43.♖c8 ♗xf7 44.♖xc7+ ♗e6 45.♗e3 ♗d1 46.♗xb6 c3 47.h4 ♖a6 48.♗d4 ♖a4 49.♗xc3 ♗xc3 50.♖xc3 ♖xh4 51.♖f3 ♖h5 52.♗f2 ♖g5 53.♖f8 ♗e5 1/2-1/2.

Now it was the champion's turn to surprise in the opening with his choice of the Queen's Gambit Accepted, never previously part of Kasparov's repertoire. Again Kramnik went for an early queen swap and gradually nursed an edge into a serious advantage. A serious error on move 38 left things looking hopeless for Kasparov but tremendous defensive play and a few missed wins by Kramnik led to a draw.

Kramnik - Kasparov R4 [D27] Queen's Gambit Accepted

1.d4 d5 2.c4 dxc4 3.♗f3 e6 4.e3 c5 5.♗xc4 a6 6.0-0 ♗f6 7.dxc5 ♗xd1 8.♖xd1 ♗xc5 9.♗bd2 ♗bd7 10.♗e2 b6 11.♗b3 ♗e7 12.♗fd4 ♗b7 13.f3 0-0 14.e4 ♖fc8 15.♗e3 ♗f8 16.♗d2 ♗e5 17.♗4b3 ♖c6 18.♖ac1 ♖ac8 19.♖xc6 ♖xc6 20.g4 h6 21.h4 ♗c8 22.g5 hxg5 23.hxg5 ♗fd7 24.f4 ♗g6 25.♗f3 ♖c2 26.♗xa6 ♗xa6 27.♖xd7 ♖xb2 28.♖a7 ♗b5 29.f5 exf5 30.exf5 ♖e2

30...♗h8? 31.♖a8+ ♗e8 32.♗xb6+-

31.♗fd4! ♖e1+

31...♖xe3? 32.♗xb5 wins a piece?

NZ Chess

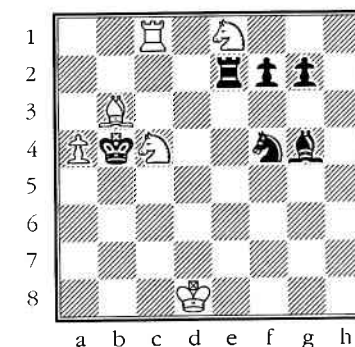
32.♗f2 ♖f1+ 33.♗g2 ♗h4+ 34.♗h3 ♖h1+ 35.♗g4 ♗e8 36.♗f2 ♗g2 37.♖a8 ♖f1 38.♗f3 ♗h4+?

38...♗f4 was reckoned to be a better try though White is still much better. After the text White wins the ♗e8 and surely Kramnik should take a 2-0 lead?

39.♗e2 ♖h1 40.♗b5 ♗xg5

40...♗xf5 41.♗c7 ♗d6 42.♗g3+-

41.♗c7 ♗e7 42.♗xe8 ♗xf5 43.♗xb6 ♗d7 44.a4 ♖h3 45.♗c5+ ♗c6 46.a5 ♖e3+ 47.♗d1 ♖e7 48.♖c8+ ♗b5



49.♗e4

Tempting, in view of the threat ♖c5+, but best was 49.♗c7+ ♗c4 50.♗e4 ♖xe4 51.♗e6+ ♗b4 (or 51...♗d3 52.♗c5+) 52.♗xg5+-.

49...♖xe4

Missing 49...♗e3+ 50.♗c1 (50.♗e2 ♗c4 51.♗c7+ ♗a4 52.♗f3 ♖xc4!) 50...♗c4+ 51.♗xg5 ♗xb6 52.axb6 ♗xb6 though one would expect the knights to triumph in the end.

50.♖c5+ ♗a6 51.♗c7+ ♗b7 52.♖xf5 ♗e3 53.♗xe3 ♖xe3 54.♖xf7?

Manuel Illescas, one of Kramnik's seconds, later pointed out a win with 54.♗d5 e.g. 54...♖a3 55.♗b4 f6 56.♖b5+ ♗c7 57.♗c2 g5 58.♗b2 ♖a4 59.♗b3 ♖a1 60.a6 g4 61.♖b7+ ♗c8 62.♖g7 f5 63.a7 ♖a5 64.♗d5 and the threat of ♗b6 decides.

54...♖e5?

Again Kasparov misses the best play: 54...♗c6! 55.♗a8!? (Illescas) 55...♖e5!

23

(55...♟b5? 56.♞f5+ ♟a6 57.♞b6 ♞a3 58.♞c4 ♞a4 59.♞c5+-). 56.a6 ♞a5 57.a7 g5 58.♟e2 ♞a3 59.♟f2 g4 60.♟g2 ♟c5 61.♞c7+ ♟d6 62.♟g1 ♞g3+ and there is no way for White to make progress.

55.a6+?

Better was 55.♞d5+ ♟a6 56.♞b4+.

55...♟b6 56.♞xg7 ♞a5 57.♟d2 ♞a1 58.♟c2 ♞h1?

58...♞a5 59.♟b2 ♞a4 60.♟b3 ♞a1 61.♟c2 ♞a5 62.♟d3 ♞a1 63.♟d4 ♞c1 and Black wins the last pawn.

59.♟b2?

Throwing away the win. Correct was 59.♞g8! ♞h2+ (The best try: 59...♞h7? 60.♞b8+ ♟a7 61.♞b7#; 59...♞a1 60.♞d5+ ♟c5 61.♞g5) 60.♟d3 ♞h3+ 61.♟e2 ♞h2+ 62.♟f3 ♞h3+ 63.♟g2 ♞a3 64.♞d5+ ♟c5 65.♞g5! ♞a2+ 66.♟f3 ♞a3+ 67.♟e2 ♞a2+ 68.♟d3 ♞a3+ 69.♟c2 ♞a2+ 70.♟b3 ♞a1 71.♟b2+-.

59...♞h8!

After this Kramnik is given no more winning opportunities.

60.♟b3 ♞c8 61.a7 ♟xa7 62.♟b4 ♟b6 63.♞d5+ ♟a6 64.♞g6+ ♟b7 65.♟b5 ♞c1 66.♞g2 ♟c8 67.♞g7 ♟d8 68.♟f6 ♞c7 69.♞g5 ♞f7 70.♞d5 ♟d7 71.♞g6 ♞f1 72.♟c5 ♞c1+ 73.♟d4 ♞d1+ 74.♟e5 ½-½.

Game 5 was a fairly short drawn Symmetrical English but the sixth game, another Queen's Gambit Accepted, was more exciting with Kramnik again applying the pressure and coming ever so close to making it 2-0. Kasparov, however, conjured up another fine defensive effort to hold the draw. Surely Kasparov will pension off this opening after twice having to come off the floor to draw.

Game 7 was an 11-move draw, a wasted White for Kasparov but an extra rest day or two was probably vital. In game 8 Kasparov, playing the black side of a 4.Qc2 Nimzoindian, gained a slight advantage but Kramnik easily bailed out into a drawn opposite colour bishop ending two pawns down. Kramnik's Berlin Defence queenless middlegame again sufficed to draw without much difficulty in game 9.

The tenth game was a total disaster for Kasparov, beaten in a mere 25 moves. With six games to go Kramnik now led 6-4.

Kramnik - Kasparov

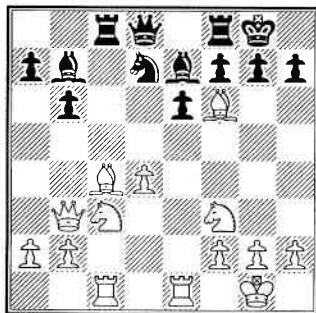
Game 10 [E54] Nimzoindian

1.d4 ♠f6 2.c4 e6 3.♠c3 ♟b4 4.e3 0-0 5.♞d3 d5 6.♞f3 c5 7.0-0 cxd4 8.exd4 dxc4 9.♞xc4 b6 10.♞g5 ♟b7 11.♞e1 ♠bd7 12.♞c1 ♞c8 13.♟b3 ♞e7?!

Another chink in Kasparov's opening preparation? 13...♞xc3 14.♞xc3 h6 15.♞h4 ♞d5! with equality has been played before.

14.♞xf6 ♠xf6

Preferable was 14...♞xf6 15.♠b5 ♞a8 16.♠d6 ♞xf3.



15.♞xc6! fxe6 16.♟xe6+ ♟h8

16...♞f7 17.♠g5+-.

17.♟xe7 ♞xf3 18.gxf3 ♟xd4 19.♠b5

The knight is eyeing f7. All of this has been played previously, a 1994 game Hazai-Danielsen continuing with 19...♟f4!?

19...♟xb2? 20.♞xc8 ♞xc8 21.♠d6 ♞b8 22.♠f7+ ♟g8 23.♟c6 ♞f8

Not the best but after 23...h5 24.♠g5+ ♟h8 25.♟f5 ♟xa2 26.♞e6 ♟g8 27.♟g2 White's attack is winning.

24.♠d8+ ♟h8 25.♟e7 1-0.

Kramnik played a different variation of the Lopez but the result was still a draw. Kasparov's later claimed that 23.♞a1 was winning and that he had had the position on the board in home preparation but Kramnik pooh-

poohed this claim, also claiming that this position featured in his preparation.

Kasparov - Kramnik

Game 11 [C78] Ruy Lopez

1.e4 e5 2.♠f3 ♠c6 3.♟b5 a6 4.♞a4 ♠f6 5.0-0 b5 6.♟b3 ♞c5 7.a4 ♟b7 8.d3 0-0 9.♠c3 ♠a5 10.axb5 ♠xb3 11.cxb3 axb5 12.♞xa8 ♞xa8 13.♠xe5 d5 14.♞g5 dxe4 15.dxe4 ♟xd1 16.♞xd1 b4 17.♞xf6 bxc3 18.bxc3 gxf6 19.♠d7 ♞d6 20.♠xf8 ♠xf8 21.f3 h5 22.h4 ♟e7 23.♟f2 ♟b7 24.c4 ♞e5 25.♞d2 ♞c8 26.♞d5 ♞e6 27.♞a5 c5 28.♟e3 ♞d4+ 29.♟d3 f5 30.b4 fxe4+ 31.♟xe4 ♠f2 32.bxc5 ♞xh4 33.c6 ♟d6 34.♞xh5 ♠f2 35.g4 ♠xc6 36.♞h2 ♞c5 37.♞c2 f6 38.♞h2 ♞xc4 39.♞h6 ♞d5+ 40.♟f5 ♞xf3 41.g5 ♟d5 ½-½.

Kasparov gained the advantage in game 12 after risky play by Kramnik but in mutual time trouble he was unable to convert the pawn he won. By this point it seemed clear that Kramnik was playing like a winner and Kasparov like a loser. The champion now needed a 3 out of 4 finish. Back to the Berlin Defence in game 13 and a 14-move draw. It is surely all over now with the score at 7½-5½ and three to play.

Kasparov looked dangerous for one of the few occasions in this match when Kramnik played too passively in game 14 and eventually shed a pawn. Again, however, Kasparov got jittery in time trouble and was unable to convert his advantage.

Kramnik - Kasparov

Game 14 [A30] English

1.♠f3 ♠f6 2.c4 b6 3.g3 c5 4.♞g2 ♟b7 5.0-0 g6 6.♠c3 ♞g7 7.d4 cxd4 8.♟xd4 d6 9.♞d1 ♠bd7 10.♞e3 ♞c8 11.♞ac1 0-0 12.♟h4 a6 13.♠e1 ♠xg2 14.♠xg2 ♞e8 15.b3 ♟c7 16.♞g5 ♟b7 17.♠e3 b5 18.♠ed5 bxc4 19.bxc4 h5! 20.♟f4 ♟c6 21.♞xf6 ♠xf6 22.♠xf6+ ♞xf6 23.♠d5 ♟b2 24.♞b1 ♞g7 25.♟g5 ♟f8 26.♞dc1 e6 27.♠f6 ♞ed8 28.h4 ♟a8 29.c5?!

Later Kramnik suggested that 29.♟f4 was better.

29...♞xc5 30.♞xc5 ♞xf6 31.♟xf6 dxc5 32.♟h2 ♟g8 33.♞b6 ♞e8 34.♟f3 ♟xf3 35.exf3 ♞c8

36.♞xa6 c4 37.♞d6 c3 38.♞d1 ♞a8 39.♞c1 ♞xa2 40.♞xc3 ♞xf2+ 41.♟g1 ♞a2

Normally R+4P versus R+3P on the same side is a fairly routine draw at this level but here the white king is badly placed.

42.♞c7 ♟f8 43.♞b7 ♟e8 44.♞b8+ ♟e7 45.♞b7+ ♟f6 46.♟f1?

46.f4 was later claimed to be the clearest way to the draw. After the text Kasparov has some winning chances.

46...e5 47.♞b6+ ♟f5 48.♞b7 ♟e6 49.♞b6+ ♟f5 50.♞b7 f6 51.♞g7 g5 52.hxg5 fxe5 53.♞g8 g4 54.♞f8+ ♟e6 55.♞e8+ ♟f5

55...♟f6 was later suggested as a better winning attempt but it seems that White can hold here too.

56.♞f8+ ♟g6 57.♞g8+ ♟f5 ½-½.

With the score at 8-6 the challenger needed only a draw in one of the two remaining games though a loss in the penultimate would have set the stage for a titanic final game. This was not to be as Kramnik played solidly to gain the necessary draw.

So the final score was 8½-6½ and the final game was not played and we have a new world champion in 25-year old Vladimir Kramnik. It certainly seems that the Russian GM has been around much longer than his comparative youth suggests. Already Kasparov has spoken of his wish for a return match but Kramnik was coy, preferring to savour the moment before committing himself one way or the other.

Who would have thought that Gary Kasparov would be unable to win a single game in a match of sixteen games? This match was really somewhat one-sided, Kramnik out-preparing his opponent comprehensively, at least holding his own in middle-game complications, showing superior endgame technique, and better self-control in time pressure situations. Just as Mikhail Botvinnik came back several times after comprehensive defeats so it is hard to believe that Gary Kasparov would not provide Kramnik with a much sterner test if he is given the opportunity.

Overseas news

Buenos Aires

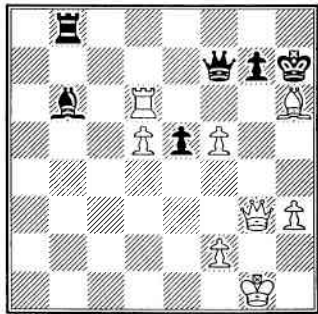
The Najdorf Memorial was jointly won by Judit Polgar and Viktor Bologan with 6½/9, both of them undefeated. Anatoly Karpov won his first three games but was knocked back in the final round when he lost to local Pablo Ricardi. The event was category 14 (average rating 2577).

Scores: 1-2 GM Bologan (MDA) & GM J. Polgar (HUN) 6½; 3 GM Short (ENG) 6; 4 GM Karpov (RUS) 5½; 5 GM Ricardi (ARG) 4½; 6-7 GM Leitao (BRA) & GM Milov (SWI) 4; 8 IM Pierrot (ARG) 3½; 9 GM Milos (BRA) 3; 10 Flores 1½.

Flores - Karpov

[B22] Sicilian Def., Alapin Var.

1.e4 c5 2.c3 d6 3.e5 d5 4.d4 cxd4 5.d3 e6 6.cxd4 d6 7.d3 c3 8.bxc3 9.c7 10.d2 d7 11.d3 dxe5 12.e1 exd4 13.cxd4 0-0 14.c1 d8 15.e4 a6 16.c2 d6 17.h4 d7 18.g5 g6 19.e5 d5 20.cxe7 cxe7 21.g4 b5



22.c3 f6 23.g6 h6 24.g6+ g7 25.c6+ f7

25...f7 allows White to draw by g4+ and Rh4+ etc, not an attractive option for the former World Champion against a 2300 player!

26.g4 c6 27.e1 f6 28.g7+ g7 29.e5 d8 30.g5+ f8 31.h3 xd4 32.f5?

By NM Peter Stuart

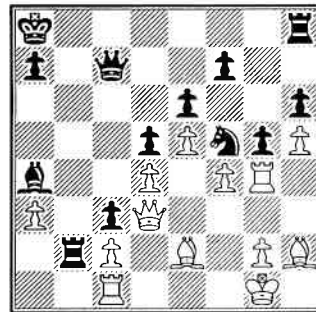
32.g6! e8 (32...f4?? 33.d6+) 33.h6 g8 34.h8+ xh8 35.f7 is unclear.

32...d7 33.c5 d1+ 34.f2 xf5 35.f5 d5 36.f4 e8 37.h6+ e7 38.b6 d6 39.c7+ e6 40.c2 b5 41.g3 c4 42.h4 xf2+ 0-1.

Milos - Short

[C19] French Def., Winawer Var.

1.e4 e6 2.d4 d5 3.c3 b4 4.e5 c5 5.a3 xc3+ 6.bxc3 c7 7.f3 e7 8.h4 b6 9.h5 h6 10.b5+ d7 11.d3 b6 12.f1 a5 13.h4 0-0-0 14.dxc5 bxc5 15.g1 b8 16.g4 dg8 17.c1 a8 18.d2 c4 19.e2 ac6 20.f4 g5 21.h2 f5 22.d1 b8 23.d2 b7 24.d4 cxd4 25.cxd4 a4 26.f4 b2 27.c1 c3 28.d3



28...xc2!

29.xc2 xc2 30.cxc2 xd4 31.d3 cxe2+ 32.cxe2 c2-+. 0-1.

Paignton

GMs Klaus Bischoff (GER) and John Nunn (ENG) shared first place in a closely fought Harry Golombek Memorial tournament, run as part of the 50th Paignton Congress. Half a point behind, on 5 out of 9, were IM Fontaine (FRA), GM Hebden (ENG) and IM Turner (ENG).

U.S. Championship

Seattle hosted this year's American Champ-

ionship with a return to the round-robin format. A strong field (category 14 strength) saw close scoring with only two points separating the twelve players at the end.

There was a triple tie for first place between Joel Benjamin, Yasser Seirawan and Alexander Shabalov on 6½ points while Dmitry Gurevich and Grigory Kaidanov were next on 6. A double round play-off for the title was held with Benjamin winning his first three games while the other two scored a win apiece in their mutual encounters. The final game wasn't played.

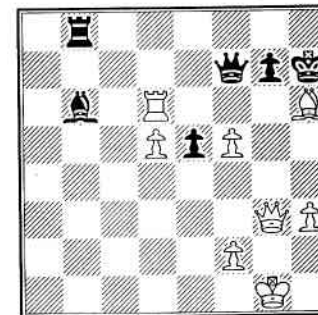
Short vs Bacrot

Nigel Short proved too strong for the 17-year old grandmaster Etienne Bacrot in a six-game match in the Frenchman's home town of Albert. The English GM won all his three games with the white pieces and lost only once with black to take the match 4-2. The second game featured a nice finish:

Short - Bacrot

[B80] Sicilian Def., Schevingen Var.

1.e4 c5 2.f3 e6 3.d4 cxd4 4.dxd4 e5 5.c3 d6 6.c3 f6 7.d3 e7 8.0-0 0-0 9.h3 e5 10.d2 e6 11.d5 xd5 12.exd5 b4 13.c4 b5 14.c3 xd3 15.cxd3 bxc4 16.cxc4 b8 17.b4 c8 18.b3 d8 19.ac1 b6 20.g5 e8 21.e4 b7 22.g4 h6 23.d2 c7 24.b5 f5 25.gxf5 xc1 26.xc1 f7 27.g3 f6 28.c6 d8 29.a4 d4 30.a5 h5 31.b6 axb6 32.axb6 b8 33.xd6 dxg3 34.c3g3 35.xh6 h7



36.c3g7! c3g7 37.g6 c7 38.h6+! 1-0.

NZ Chess

Belgrade

The Veselin Boskovic Memorial, a category 14 round-robin, was won by Bulgarian GM Kiril Georgiev with 6½/9. Alexander Belyavsky was heading for victory until he lost to Ivan Ivanisevic in the penultimate round.

Scores: 1 GM Georgiev 6½; 2 GM Belyavsky (CRO) 6; 3 GM Andersson (SWE) 5½; 4-6 GM Damljanovic (YUG), GM Ilincic (YUG) & GM Ivanisevic (YUG) 4½; 7-9 GM Ivanovic (YUG), GM Markovic (YUG) & GM Romanishin (UKR) 3½; 10 Xie Jun (CHN) 3.

Hoogeveen

The Essent-Tournament in this Dutch town was a four-player double round-robin won by FIDE World Champion Alexander Khalifman with 5½/6. Dutch GM Jan Timman was a distant second on 3, then followed GM Galkin (RUS) 2 and GM Judit Polgar (HUN) 1½.

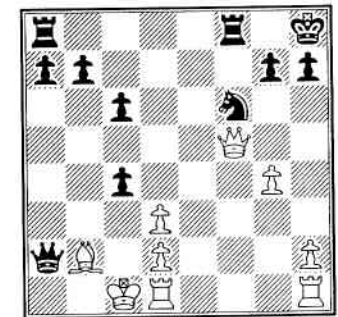
Croad game from World Junior

This is Nic Croad's last game at the World Junior Championship, and one of his best.

Kruger, P (2085) - Croad,

[C29] Vienna Game

1.e4 e5 2.c3 f6 3.f4 d5 4.fxe5 dxe4 5.f3 b4 6.c2 xc3 7.bxc3 0-0 8.c4 c6 9.b2 g4 10.c3 xf3 11.cxf3 d7 12.0-0-0 c5 13.e6 fxe6 14.g4 d6 15.cxe6+ h8 16.f5 xa2 17.g4 c5 18.d3 dxd3+ 19.cxd3 dxc4



20.g5 d5 21.d7 c3 22.dxc3 f2 23.cxb7 b6 0-1

27

World U-12 and U-16 Championships

By ICM Michael Freeman

The end of the European summer has become the traditional time for the major world chess events, including the World Junior, World Youth, and every second year, the Olympiad. So with the blessing of an understanding employer, I headed off for six weeks to accompany Colm Hartigan and Puchen Wang at the World Youth event before joining the Olympiad team and attending the FIDE congress.

The World Youth event is held in Oropesa del Mer, on the Mediterranean coast of Spain about 250km south of Barcelona. Oropesa is a strategically located small village with ruins and links to Roman and Middle Ages settlements. In the last five years it has become a tourist development area with rows of apartment blocks, hotels, and nautical based amusements, all in various stages of construction.

In summer the area is crowded out with British holiday makers. In October, during the off season, it hosts 800 young chess players accompanied by another 400 parents, coaches, and other family members. Accommodation is provided for one player in each section plus a delegation chief, meaning the hotel makes a profit on the event by charging the additional supporters peak season rates.

The event is run as ten separate events of 11 rounds, each tournament having about 80 competitors. These separate events are Under 10, 12, 14, 16 and 18 age groups for girls and boys. Puchen was competing in the Under 10's for the second year whilst Colm played in the Under 16's.

Spectators locked out

One game was played each day commencing at 3:30pm in a large room in which the players were locked with no spectators allowed. Apparently problems in previous years with over-zealous coaches/parents and young children has led to this situation, and it does give the adults a few hours break from the hyper-active kids.

Puchen finished up in 5th place on tiebreak

with 8/11, doubtless the best result in a FIDE junior event by a New Zealander since Murray Chandler's exploits. His excellent ability to take advantage of opportunities created in murky or dubious positions helped him gain several points.

Colm scored 4/11 in a field where over 80% of the players had FIDE ratings, and fought hard in every game. He certainly performed at a higher level than his NZ rating would suggest.

A spectacular closing ceremony and firework display had to be cancelled on the last day due to torrential rains that led to three deaths in the flooding, and soon after we departed, washed away the access bridge to Oropesa.

Supported by parents

I found the whole event a real eye-opener in terms of the talent on display, the reactions of the coaches, and even the reactions of some people back in New Zealand to Puchen's excellent result. Almost all of the competitors in Spain were not there due to their Chess Federation, or well-organised junior schemes, but pockets of parents who support, encourage and foster their kids.

Most of the top players had private coaches, and parents who take them to major events all over Europe. Several of the kids do not attend school, even at age 10. Why, I can't understand, as chess is not like tennis or golf with potential huge paydays, but I guess that to an eastern European even chess money provides a better living than the alternatives. Unfortunately, there were also the usual groups who seemed to be exploiting the talents of the youngsters for their own purposes.

Peulic,B (2216) – Hartigan,C

World U-16, R1

[B85] Sicilian Def, Scheveningen Var.

1.e4 c5 2.♘f3 d6 3.d4 cxd4 4.♗xd4 ♖f6 5.♗c3 a6 6.♗e2 e6 7.0-0 ♗e7 8.a4 ♗c7 9.a5 ♗c6

10.♗b3 b6 11.axb6 ♗xb6 12.♗e3 ♗c7 13.f4 0-0 14.♗d2 ♗b7 15.♗a4 ♗d7 16.♗d4 ♗c5 17.♗a1 ♗xd4 18.♗xd4 ♗f6 19.e5 ♗e7 20.exd6 ♗xd6 = 21.♗xd6 ♗xd6 22.♗fd1 ♗e7 23.♗a4 ♗xa4 24.♗xa4 ♗fc8 25.c3 ♗ab8 ½-½

Wang,P - Georgiev,V BUL

World U-10, R 2

[B40] Sicilian Def, Classical System

1.e4 c5 2.♘f3 e6 3.d4 cxd4 4.♗xd4 ♖f6 5.♗d3 d6 6.0-0 ♗e7 7.♗c3 0-0 8.♗h1 a6 9.a4 b6 10.f4 ♗c7 11.♗e1 ♗b7 12.♗g3 ♗b7 13.f5 e5 14.♗b3 ♗fe8 15.♗e3 d5 16.exd5 ♗xd5 17.♗h6 ♗f8 18.♗e4 ♗7f6 19.♗ae1 ♗h8 20.♗g5 ♗xe4 21.♗xe4 f6 22.♗d2 ♗d6 23.♗h4 ♗f7 24.♗d4 ♗b4 25.♗xb4 ♗xb4 26.♗h3 ♗g8 27.♗e6 ♗d5 28.♗e4 ♗c7 29.♗f3 ♗c8 30.♗xd5 ♗xd5 31.♗xd5 ♗xc2 32.♗b3 ♗c6 33.♗c4 ♗ec7 34.♗xc6 ♗xc6 35.h3 ♗b8 36.♗d1 ♗d6 37.♗xd6 ♗xd6 38.♗c4 h6 39.♗c8+ ♗h7 40.♗f8+ ♗g8 41.♗e6+ ♗xe6 42.♗xe6 ♗f7 43.♗g1 g6 44.g4 gxf5 45.gxf5 ♗e7 46.♗f2 ♗d6 47.♗e3 b5 48.axb5 axb5 49.♗e4 ♗c6 50.♗f8 ♗d6 51.♗g6 ♗c5 52.♗xe5 fxe5 53.♗xe5 1-0

Wang,P - Fandler,S AUS

World U-10, R 3

[C42] Petroff's Def.

1.e4 e5 2.♘f3 ♗f6 3.♗c3 ♗b4 4.♗c4 0-0 5.0-0 ♗c6 6.d3 h6 7.♗d5 ♗xd5 8.exd5 ♗a5 9.♗xe5 d6 10.♗d2 ♗xd2 11.♗xd2 ♗xc4 12.♗xc4 ♗e8 13.♗fe1 ♗f5 14.♗xe8+ ♗xe8 15.♗e3 ♗g6 16.♗c3 ♗d7 17.♗b4 ♗b8 18.a4 a6 19.♗g4 ♗xg4 20.♗xg4 ♗e8 21.♗f1 f5 22.♗e3 f4 23.♗c4 ♗f7 24.♗e1 ♗xe1+ 25.♗xe1 ♗xd5 26.g3 fvg3 27.fvg3 ♗f7 28.♗e3 ♗e6 29.♗d2 ♗f6 30.d4 c5 31.♗c3 b5 32.axb5 axb5 33.dxc5 dxc5 34.b4 cxb4+ 35.♗xb4 ♗d7 36.♗d5+ ♗f5 37.♗c5 ♗g4 38.♗d6 ♗e8 39.♗e7 ♗c6 ½-½

Kvan,A (2090) KAZ - Hartigan,C

World U-16, R 3

[B51] Sicilian Def, Rossolimo Var.

1.e4 c5 2.♘f3 d6 3.♗b5+ ♗d7 4.c3 a6 5.♗a4 b5 6.♗c2 c4 7.a4 ♗b7 8.d4 ♗gf6 9.♗e2 e5

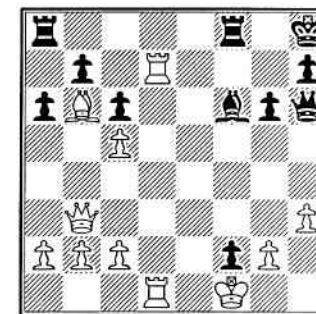
10.0-0 ♗e7 11.♗g5 0-0 12.♗a3 ♗b6 13.♗ad1 h6 14.dxe5 ♗xe5 15.♗c3 ♗xf3+ 16.♗xf3 ♗c6 17.♗g3 ♗h8 18.f3 ♗c8 19.♗f2 ♗e6 20.axb5 axb5 21.♗b1 ♗fd8 22.♗c2 ♗b7 23.♗d4 ♗d7 24.♗g3 ♗f8 25.♗e3 b4 26.♗h1 bxc3 27.♗xc3 ♗c5 28.♗f4 ♗g8 29.♗f5 ♗xf5 30.exf5 ♗a4 31.♗xc4 ♗xb2 32.♗d5 ♗xd5 33.♗xd5 ♗c4 34.♗e1 ♗a3 35.♗d4 ♗a5 36.♗e4 ♗xd5 37.♗xd5 ♗e5 38.♗b1 ♗c8 39.h3 ♗c6 40.♗b6 ♗e7 41.♗b7 ♗c3 42.f6 ♗g6 43.♗e4 ♗a3 44.♗d8 d5 45.♗xg6 fvg6 46.♗d1 ♗d6 47.♗g1 gxf6 48.♗xd5 ♗e5 ½-½

Diamant,A - Wang,P BRA

World U-10, R 4

[B23] Sicilian Def, Closed System

1.e4 c5 2.♗c3 ♗c6 3.f4 g6 4.♗f3 ♗g7 5.♗b5 a6 6.♗xc6 dxc6 7.0-0 ♗f6 8.d3 ♗g4 9.h3 ♗xf3 10.♗xf3 c4 11.e5 ♗d5 12.dxc4 ♗xc3 13.♗xc3 0-0 14.♗c3 ♗c7 15.♗ad1 f6 16.exf6 ♗xf6 17.♗b3 e5 18.♗b6 ♗g7 19.c5+ ♗h8 20.♗d6 exf4 21.♗fd1 f3 22.♗d7 f2+ 23.♗f1 ♗h6



24.♗xb7 ♗ae8 25.♗a5 ♗h5 26.g4 ♗e5 27.♗d3 ♗h2 28.♗f3 ♗g1# 0-1

Nguyen,N VIE - Wang,P

World U-10, R 5 [C00] French Def.

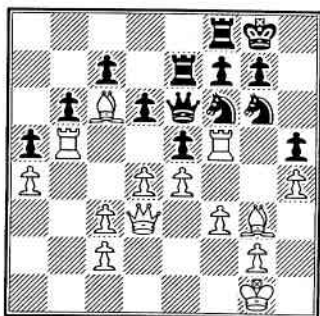
1.e4 e6 2.d3 c5 3.♗d2 ♗c6 4.♗gf3 g6 5.g3 ♗g7 6.♗g2 ♗e7 7.0-0 0-0 8.♗e1 d6 9.♗f1 ♗b8 10.h4 ♗d4 11.c3 ♗xf3+ 12.♗xf3 d5 13.e5 d4 14.♗g5 dxc3 15.bxc3 b6 16.♗e2 ♗a6 17.♗ad1 ♗d7 18.♗xe7 ♗xe7 19.♗c3 ♗fd8 20.♗h2 b5 21.d4 cxd4 22.cxd4 ♗b7 23.♗f4

Qxg2 24. Qxg2 ♖a3 25. ♖d2 ♖f8 26. ♗g4 ♗e7
27. ♗f6+ ♗h8 28. h5 ♗g7 29. ♖h1 ♖xf6 30. exf6
♗f8 31. hxg6 fxg6 32. ♗c7 h5 33. ♗e5 ♗f7
34. g4 ♗b7+ 35. f3 ♗d5 36. ♗f4 ♖b7 37. ♗g3
♖h7 38. f7 ♗g7 39. gxf5 ♖xh5 40. ♖xh5 ♗xh5
41. ♖c2 ♗f5 42. ♗xf5 exf5 43. ♖c7 ♖xd4
44. ♖xa7 ♗f8 45. ♖b7 ♖b4 46. a3 ♖b3 47. ♗f4
♖xa3 48. ♗g5 ♖a6 49. ♖xb5 ♗xf7 ½-½

Wang, P - Airapetyan, H ARM

World U-10, R 6 [C42] Petroff's Def.

1. e4 e5 2. ♗f3 ♗f6 3. ♗c3 ♖b4 4. ♖c4 0-0 5. 0-0
♗c6 6. d3 d6 7. ♗g5 ♖xc3 8. bxc3 ♗e7 9. ♗d2
h6 10. ♗h4 ♗d8 11. ♖b1 b6 12. d4 ♗c6 13. ♖d5
♖b8 14. ♗c4 ♗f4 15. ♗a5 ♖d7 16. ♗c6 ♖xc6
17. ♖xc6 ♗g6 18. ♗g3 ♖fd8 19. ♖e1 ♗e6
20. ♗d3 a5 21. a4 ♗h5 22. ♖d5 ♗f6 23. ♗c4 ♖d7
24. ♖c3 ♖f8 25. ♖f3 ♗d8 26. ♖f5 ♗f6 27. ♖c6
♗e7 28. f3 ♗c8 29. h4 h5 30. ♖b5 ♗e6 31. ♗d3



31... ♖c8?? 32. d5 ♗xf5 33. exf5 e4 34. fxg4
♗e5 35. ♖xe5 ♖xe5 36. ♖b1 ♖xe4 37. ♖f1 ♖e7
38. ♗d2 ♗f8 39. ♖e1 ♖xe1+ 40. ♗xe1 ♖b8
41. ♗e2 ♖c8 42. ♗a6 1-0

Wang, P - Dasari, S (2137) IND

World U-10, R 9 [B57] Sicilian, Sozin Att.

1. e4 c5 2. Nf3 Nc6 3. d4 cxd4 4. Nxd4 Nf6
5. Nc3 d6 6. Be4 Qb6 7. Nde2 e6 8. 0-0 Be7
9. Be3 Qc7 10. Nb5 Qb8 11. Bf4 Ne5 12. Bd3
a6 13. Nbc3 0-0 14. Ng3 b5 15. Bxe5 dxe5
16. Nh5 Rd8 17. Nxf6+ Bxf6 18. Qg4 Qc7
19. Ne2 g6 20. Ng3 Bg7 21. a4 f5 22. Qg5 b4
23. b3 a5 24. Be4 f4 25. Ne2 Rd6 26. c3 Bb7
27. exb4 axb4 28. Rac1 Qb6 29. Rfd1 Rad8

30. Bxe6+ Kh8 31. Bd5 h6 32. Qe7 Bf6
33. Qf7 Bh4 34. Rc7 Bxf2+ 35. Kf1 Qxc7
36. Qxc7 Bxd5 37. Kxf2 R6d7 38. Qxe5+ 1-0

Werblloff, J - Hartigan, C RSA

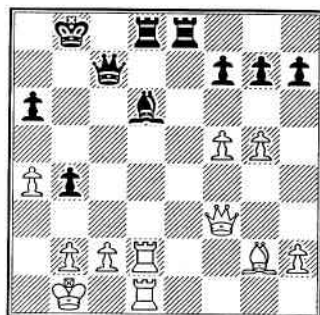
World U-16 [A57] Wolga-Benko Gambit

1. d4 Nf6 2. c4 e5 3. d5 b5 4. cxb5 a6 5. b6 d6
6. Nc3 Qxb6 7. e4 g6 8. Nf3 Nbd7 9. Be2 Bg7
10. 0-0 0-0 11. a4 Bb7 12. a5 Qc7 13. Nd2 e6
14. Nc4 exd5 15. exd5 Ne8 16. Bf4 Ne5
17. Bxe5 Bxe5 18. Nxe5 dxe5 19. Qb3 Nf6
20. Bf3 Rab8 21. Qc4 Qd6 22. Rfd1 Rfd8
23. Rd2 Be8 24. h3 Rb4 25. Qe2 Bb7 26. Re1
Nd7 27. Ne4 Qc7 28. d6 Qxa5 29. Re1 Qb6
30. g3 Bxe4 31. Bxe4 Nf6 32. Bd3 Qxd6
33. Rcd1 Rd4 34. Ra1? Rxd3 35. Rxd3 Qxd3
36. Qxe5 Qd4 37. Qe2 Ra8 38. Rxa6 Rxa6
39. Qxa6 c4 40. Kg2 Ne4 0-1

Wang, P - Berczes, D (2054) HUN

World U-10 R11 [B96] Sicilian, Najdorf
Var.

1. e4 c5 2. ♗f3 d6 3. d4 cxd4 4. ♗xd4 ♗f6 5. ♗c3
a6 6. ♗g5 e6 7. f4 ♗bd7 8. ♗f3 ♗c7 9. g4 b5
10. 0?0?0 ♖b7 11. a3 0?0?0 12. ♖xf6 ♗xf6
13. g5 ♗d7 14. ♖h3 ♗b6 15. f5 ♗e5 16. ♗g3
exf5 17. ♖hf1 ♗b8 18. exf5 ♗c4 19. ♖fe1 ♗a8
20. ♗b3 d5 21. ♗xd5 ♖xd5 22. ♖xd5 ♖d6
23. ♗f3 ♗a7 24. ♗d2 ♗xd2 25. ♖xd2 ♗c7
26. ♗b1 b4 27. a4 ♖he8 28. ♖ed1 ♗b8 29. ♖g2



29... ♗a7 30. ♖xd6 ♖xd6 31. ♖xd6 ♖e1+
32. ♖d1 ♖xd1+ 33. ♗xd1 a5 34. ♗d4+ ♗b6
35. ♗xb6+ ♗xb6 36. ♖d5 ♗c5 37. ♖xf7 1-0

Affiliated clubs

Clubs are requested to advise *NZ Chess* of any changes in details given below.

Ashburton PO Box 204, Ashburton. Meets Monday 7.15pm (Feb-Oct), the Admin Building, Ashburton Hospital, Elizabeth St. Contact, Ken Pow (03) 352-4851.

Auckland Chess Centre Meets Monday 7.30 & Thursday (social) 7.30pm, 17 Cromwell St, Mt Eden, Auckland 1003. Tel (09)630-2042 clubroom. Contact, Bruce Wheeler (09)623-0109.

Canterbury, PO Box 25-242, Christchurch. Meets Wednesday, 7.30pm., 227 Bealey Avenue; tel (03)366-3935 clubroom. Pres, Gavin Dawes (03)352-4851.

Eastern Knights, Gisborne, meet Tuesday evenings. Contact, Genesis Potini (06) 868-1280.

Gambit Sec, Ted Frost, 103 Koromiko Rd, Gonville, Wanganui. Tel (06) 347-6098.

Hamilton Wed, 7.30pm, St Pauls Collegiate School. Inquiries Gary Judkins (07)855-5392.

Hastings-Havelock North P.O. Box 184, Hastings. Wed, 7.30 pm, Library, Havelock N High School, Te Mata Rd. Sec, Chris Smith (06)877-4583.

Howick-Pakuranga Tuesday 7.45pm (juniors 6.30-7.30), St John Ambulance Hall, Howick-Pakuranga Highway Highland Park. Sec, Kees van den Bosch (09)521-5828.

Invercargill Wednesday, 8pm, staff room, South School, Ness St. Contact, John Preston (03)216-4920.

Kapiti Wednesday, 7.30pm, Salvation Army Hall, Bluegum Road, Paraparaumu Beach. Contact, Guy Burns (04)904-2002.

New Plymouth 11 Gilbert St, New Plymouth. Tuesdays, 7.30pm. Pres, E Tuffery. Contact, Alan Jury, sec, 06 757-9090.

North Shore P.O. Box 33-587, Takapuna, Auckland 9. Wednesday 7.30pm, Northcote Community Centre, cnr College Rd/Ernie Mays St. Club captain, Peter Stuart (09)445-6377.

Otago 7 Maitland St, Dunedin. Wednesday and Saturday, 7.30pm. Tel (03)477-6919 clubroom. Acting Secretary, Malcolm Watts (03)477-5226.

Upper Hutt Monday 7.30pm, Hapai Club, 879 Fergusson Drive. Sec, Roger Smith (04)528-2721.

Waitemata Thursday 7.30pm, Kelston Comm Centre, cnr Great North Rd and Awaroa Rd, Kelston; jun 6-7.30pm Thursdays, schooldays. Contact Bruce Pollard (09)818-2342.

Wanganui Mondays 7pm, 1st floor, Commercial Club, St Hill St. Pres, Gordon Hoskyn, 7 Pehi St (06)343-6101; sec, K Yorston, 5 Mitchell St (06)343-7166.

Wellington (now merged with Civic) Tuesday 7.30pm, Museum Room, Turnbull House, Bowen Street, Wellington 1. Contact, Alan Aldridge (04) 477-4874.

Associate members

Gisborne, 4/26 Harris St, Gisborne. M.P. Grieve (06)863-0101.

NZ Correspondence Chess Assn, P.O. Box 3278, Wellington. Sec, J W (Sandy) Maxwell, (04)237-4753.

District Associations

Auckland Chess Assn, Sec, Kees van den Bosch, 61A St Johns Road, Auckland 1005 (09)521-5828.

Wellington District Chess Assn Inc,