

## NEW ZEALAND CHESS SUPPLIES

P.O.Box 42-090 Wainuiomata  
Phone (04)564-8578 Fax (04)564-8578

Mail order and wholesale stockists of the widest selection  
of modern chess literature in Australasia.  
Chess sets, boards, clocks, stationery and all playing equipment.  
Distributors of all leading brands of chess computers and software.  
Send S.A.E. for brochure and catalogue (state your interest).

### PLASTIC CHESSMEN 'STAUNTON' STYLE - CLUB/TOURNAMENT STANDARD

90mm King, solid, extra weighted, wide felt base (ivory & black matt finish)	\$28.00
95mm King solid, weighted, felt base (black & white semi-gloss finish)	\$17.50
Plastic container with clip tight lid for above sets	\$8.00

### FOLDING CHESSBOARDS - CLUB/TOURNAMENT STANDARD

480 x 480mm thick cardboard (green and lemon)	\$6.00
500 x 500mm inlaid wood (brown and white)	\$85.00

### VINYL CHESSBOARDS - CLUB/TOURNAMENT STANDARD

425 x 425mm roll-up mat type, algebraic symbols at borders to assist move recognition (brown and white)	\$8.00
440 x 440mm semi-flex and non-folding, algebraic symbols as above (dark brown and off-white)	\$9.00

### CHESS MOVE TIMERS (CLOCKS)

Turnier German-made popular club clock, brown plastic	\$69.00
Standard German-made as above, in imitation wood case	\$79.00
DGT official FIDE chess clock	\$169.00

### CLUB AND TOURNAMENT STATIONERY

Bundle of 200 loose score sheets, 80 moves and diagram	\$7.00
Bundle of 500 loose score sheets, 80 moves and diagram	\$15.00
Bundle of 2000 loose score sheets, 80 moves and diagram	\$50.00

Score pad, spiral-bound, 50 games, score sheets as above	\$3.50
Score book, spiral bound, lies flat at any page, 50 games of 70 moves, with index and diagram for permanent record	\$7.00
Artyfax peel-and-stick symbols (400 pieces) plus 20 diagram blocks	\$8.00

### MAGNETIC CHESS

Folding wallet type	
190 x 150mm (15mm green & yellow squares) flat disc pieces	\$19.50
270 x 200mm (24mm green & yellow squares) flat disc pieces (NZ made)	\$15.00
Standing magnetic pocket set 125 x 125 mm (15mm b & w squares)	\$5.00

### AUCKLAND STOCKIST

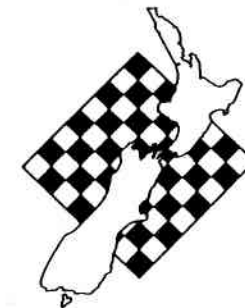
Ortvin Sarapu, 8 Barrington Road, Auckland 2

Telephone (09)376-3083

For all club and school stationery and playing equipment

**EVERYTHING FOR CHESS AT N.Z.C.S.**

# New Zealand Chess



Official magazine of the New Zealand Chess Federation (Inc.)

Vol 22 Number 3

June 1996 \$3.50 (incl GST)



National women's champion (at right) and runner-up

## NEW ZEALAND CHESS

is the official journal of the New Zealand Chess Federation (Inc.), published bimonthly (February, April, June, August, October, December).

All correspondence, subscription renewals, changes of address, advertising inquiries, articles and other copy should be sent to

*New Zealand Chess*  
P O Box 3130  
Wellington

Opinions expressed in articles, letters and other contributions are those of the authors. Letters to the editor on any chess topic are welcome; limit 150 words, and marked "for publication."

### EDITORIAL

Editor, Ted Frost.  
International editor, NM Peter Stuart.

### ANNUAL SUBSCRIPTION RATES

New Zealand, \$20.00  
Australia, South Pacific, US\$12.00 airmail  
East Asia, N America US\$15.00 airmail  
Europe US\$17.50 airmail, US\$12.50  
economy  
Rest of the world, US\$20.00 airmail,  
US\$15.00 economy

Back issues available - send for details

### ADVERTISING RATES

Full page NZ\$45.00  
Half page or full column NZ\$22.50  
Half column NZ\$12.00  
Club notices, classified NZ\$1.50 per 15  
words.

### COPY DEADLINE

The deadline for the August issue is  
**Saturday, July 27.**

Copy should include details of coming events for this year - or next.

## STOP PRESS

### FIDE world championship

The long-awaited match between Anatoly Karpov and Gata Kamsky started in Elista, in the Kalmyk Republic on June 6. Progress:

Round	1	2	3	4	5	6	7	8
Karpov	1	0	½	1	½	1	1	½
Kamsky	0	1	½	0	½	0	0	½

### Queen's Birthday tournaments

**Invercargill:** In field of 22, Mark Sinclair won by half a point from John Sutherland and Tony Dowden.

**Wellington:** Russell Dive 4½/5 finished 1½ points clear of Jonathan Sarfati and Scott Wastney in the A grade. Paul Dunn won the B grade and Sanjay Mukhedkar the C grade. Dive 5/5 won the rapid.

**Auckland Open Rapid:** Aleksei Kulashko 6/7 headed Leonard McLaren 5½ and Bob Smith, Ferenc Fabri and Gerhard van der Walt 5.

### Otago rapid

Tony Love 6½/8 has won the Otago 60/60 championship from David Guthrie 5½, with Michael Schwass and Graham Haase 4.

### STOP STOP PRESS

FM Ben Martin has just won a tournament in Sheffield with 6/9 and gained his third IM norm.

*COVER: Smiles for the Ong sisters, 17-year-old Winnie (at right), the new national women's champion, and 19-year-old Joyce, the runner-up at the 1996 N.Z. women's championship. Report page 8.*

**The premium advertising space opposite is available at \$20.00 per issue.**

# New Zealand Chess

Vol 22 Number 3 June 1996

## Contents

- 4 As Bob Smith reports, the Waitakere Trust Open goes from strength to strength, and after another success this year, the trend will continue in 1997.
- 8 Youth comes to the fore in the New Zealand Women's Championship.
- 10 Debo's Kapiti Rapid produced tense competition at the top, with some exciting games and last-round reversal of fortunes.
- 13 Junior championships have been held in several centres, with a 10-year-old winning the Wellington schoolpupils' title.
- 14 FM Jonathan Sarfati recovers form to score a double in the Civic Easter.
- 15 Preparing for the Erevan Olympiad presents plenty of problems, in transport and finance, but in spite of a very generous donation, they're not all solved yet.
- 16 The mid-year rating list includes some dramatic changes, particularly for juniors.
- 22 The round-up of New Zealand news records several residential moves.
- 23 Ben Martin does his bit for Wood Green in Britain's prestige interclub event, and Tony Dowden unwinds a nifty combination in Germany.
- 25 NM Peter Stuart's international review shows how the young challengers are catching up on Kasparov.
- 30 Whangarei, Palmerston North and Napier CCs feature in the NZCF report, and there's now a New Zealand homepage on the World Wide Web..

**Coming in June:** The the mid-year FIDE rating list and NZ junior and women's and girls' rating lists; reports on the NI and NZ Junior Championships; reports from Ben Martin on his latest success and Bob Smith and Michael Freeman at the Australian Masters, plus the Karpov-Kamsky games, annotated.

### 1996 South Island Championship and S.I. Rapid

*will be held in Blenheim for the first time, September 16 to 23*

Estimated prize fund \$900, including grade prizes. Championship, open 8r swiss, 40/2 and 20/hr, Mon to Fri; rapid, open 8r swiss, 30/30, Sat/Sun.

Entry \$50, u20 \$35; rapid \$25, u20 \$18 (cheques to Gambit CC).

Accommodation at Grove Park Motor Lodge (03)578-4389 (next to tournament venue) or Grove Bridge Holiday Park (03)578-3667

Enquiries to Peter Voss, Blenheim (03)578-8219 or Ted Frost, Wellington (04)476-4098

## 19th Waitakere Trust Open

Boasting six current or former national champions and three of this year's open Olympiad team, the 19th Waitakere Trust Open was probably the strongest ever. Twelve of the 22 players in the A grade were rated over 2000. In all 70 players competed in the three separate tournaments, for over \$2600 in prize money.

This year's tournament was held in a new venue - the Waitakere Licensing Trust's Lincoln Green Motor Hotel in Waitakere City. Play was in the sponsor's plus new conference room, with a separate analysis room and dinner and drinks just a stone's throw away. Out-of-towners stayed at the hotel at very reasonable rates, and were reportedly very happy with the accommodation.

Digital clocks were used on all boards in the A grade, courtesy of the organising club, Waitemata.

Turning to the play, Wellingtonians IM Russell Dive and FM Anthony Ker were among the favourites, while their major rivals included FMs Paul Garbett and Martin Dreyer and NM Bob Smith. IM Ortvin Sarapu and recent Russian emigre Alexei Kulashko were others who it was felt might make life difficult.

### Round-by-round

Round 1: The top half almost managed a clean sweep, only NZ Major Open winner Russell Metge 1716 stopping the perfect swiss result by drawing with Sarapu when Ortvin apparently became confused by the digital clock. Russell Dive showed he was in good form with a brilliant win over Roger Perry.

Round 2: Only Kulashko maintained a perfect record, beating Olympiad debutante Scott Wastney. Ker drew with Dreyer, Garbett drew with McLaren and Dive drew with Stuart. The upset of the round was

*By NM Bob Smith*

Smith's loss to Ralph Hart 2003 after he sacrificed a pawn for pressure and then misplayed a drawn position.

Round 3: Kulashko kept up the pace by beating Hart. Ker defeated McLaren, Dive had an easy win after Russell Metge blundered a piece inside a dozen moves, and Garbett beat Sarapu in a game of mutual mistakes. Dreyer also stayed up with the leaders when he benefited from Stuart's blunder. Smith had an unconvincing win over Perry. Leaders: Kulashko 3; Ker, Garbett, Dive, Dreyer 2½; Smith, Hart, Radojevic 2.

Round 4: The crucial Sunday morning round. Kulashko was dragged back by Ker, who confidently turned down a draw from an inferior position and went on to win. Dive also won, after Smith gained compensation for his sacrificed pawn but then misplaced his bishop. Garbett and Dreyer drew after Paul managed a perpetual when a rook down. Leaders: Ker, Dive 3½; 4Garbett, Kulashko, Dreyer 3.

Round 5: Ker and Dive predictably drew (but had to play 20 moves under the tournament rules!). Garbett and Dreyer seized their chances to catch up, the former exploiting some weakening moves by Kulashko, the latter beating Hart. McLaren scored his second win in a row to reach 3½, but that proved half a point short of the prize list. In other games, Stuart beat Sarapu after the latter missed a drawing chance and exchange down, while Smith could only draw with Peter van Dijk 2000 with the black pieces.

So the A grade ended in a four-way tie for first between Ker, Garbett, Dive and Dreyer. They each won \$275 and shared the new trophy officially awarded for the first time this year (but engraved back to 1978 with the names of all the winners). For Dreyer, it was a special achievement - the third time

running he has won or shared first place. Anthony Ker can boast a perfect record in the Waitakere Trust Open - one attempt for one victory(!), while this was Garbett's tenth win in the tournament, and Dive's second. For the record, other names to feature prominently on the new trophy include O Sarapu (7 times) and R Smith (4). In 19 years Ewen Green is the only player to win the tournament with five straight victories - in the first year, 1978.

### Other grades

In the B grade, restricted to players under 1750, top seed Geoffrey Gill 1728 set the pace with four straight wins, but came unstuck against Waitemata's Bruce Tidey 1608 in the final round. The win gave Tidey clear first with 4½/5, and \$250.

The C grade (under 1400) featured a tie for first between youth and experience. 16-year-old Daniel Goudie (Waitemata. 1273) and octogenarian Merv Morrison (Auckland Chess Centre, 1285) won their first four games and drew their last-round encounter, to win \$125 each. They were closely followed by John Pakenham and New Zealand women's champion Winnie Ong, who scored 4.

But that was not enough to give Winnie the prize for the best performance by a female. That went to Edith Otene 1291, who opted to play in the B grade and scored a very creditable 2½, also winning a grade prize.

The prize for the best junior performance went jointly to Russell Metge, who scored 3/5 in the A grade, and Alan Dunn, who scored 4/5 in the B grade.

Prizes were presented by Ross Dallow, chairman of the Waitakere Licensing Trust (he also opened the tournament). Ross intimated that, next year being the 20th anniversary of the Waitakere Trust Open, chessplayers can expect an even bigger and better event. The tournament is already pencilled in for May 3 and 4, so put that in your diary.

### Leading scores.-

A grade: 1-4 A Ker, P Garbett, M Dreyer 4/5; 5 L McLaren 3½; 6-8 A Kulashko, P Stuart, R Metge 3; 9-13 R Smith, R Hart, P van Dijk, R Perry, I Radojevic 2½.

B grade: 1 B Tidey 4½; 2-3 G Gill, A Dunn 4; 4-5 R Bennett, P Wallis 3½; 6-9 B Giles, R Phillips, J Bojtor, J Kerry 3.

C grade: 1-2 D Goudie, M Morrison 4½; 3-4 J Pakenham, W Ong 4; 5 J Wai 3½; 6-12 O Dawood, M Garland, L Parlane, J Ong, Z Kingston, M Carter, M Gibson 3.

### Dive, R J IM - Perry, R

#### Round 1

*Notes by FM Anthony Ker*

1.d4 ♠f6 2.c4 g6 3.♠f3 ♠g7 4.g3 0-0 5.♠g2 c6 6.0-0 d5 7.cxd5 cxd5 8.♠e5 e6 9.♠c3 ♠fd7

Normally it is not a good idea to move a piece twice in the opening. Here, however, White is anxious to evict White's strongly placed ♠ on e5.

10.f4 f6 11.♠f3 ♠c6 12.b3

So far according to the books. Now 12...b6 and 13...♠b7 is recommended for Black.

12...♠b6?! 13.♠a3 ♠e8 14.♠c1 ♠f8

This exchange has its pros and cons. Black swaps his passive ♠ for White's active one, but weakens his ♠'s defences at the same time.

15.♠xf8 ♠xf8 16.e4!

White is ahead in development and seeks to cash in on this by opening up the position.

16...dxe4 17.♠xe4 ♠d5

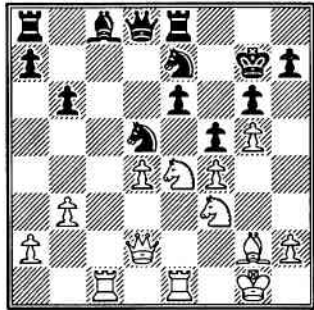
The drawback of 16.e4! is that Black's ♠s now have a great square on d5. 18...♠e3 is threatened.

18.♠e1 ♠g7 19.♠d2 ♠ce7

Black is having difficulty getting his pieces out. 19...♠d7 allows 20.♠d6 and 19...b6 is not possible because of the loose ♠ on c6.

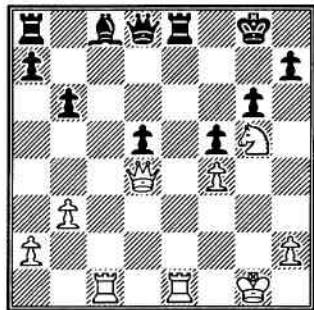
20.g4 b6 21.g5 f5

21...fxg5, although ugly, was better. Now the fireworks start.



22.f6! e1xf6 23.gxf6+ f6xf6 24.d5!

A second  $\Delta$  sacrifice. Black has several possibilities, none satisfactory, eg, 24...exd5 25.ψd4+ f7 26.εg5+ εg8 27.εxc8! εxc8 28.εxe7±, or 24...ψxd5 25.ψc3+ f7 26.εg5+ picking up the ψ.  
24...εxd5 25.ψd4+ f7 26.εg5+ εg8 27.εxd5 exd5



The great moment has arrived. White might be able to win by 28.εxc8+ but the move chosen by Russell is far more effective.  
28.ψxd5+!! ψxd5 29.εxc8+ εg7 30.εc7+ Qd7

There is no alternative. 30...ψh6 allows 31.εxh7#, while 30...ψf6 succumbs to 31.εh7#.

31.εe7+ εg8 32.εexd7

A curious feature of this position is that while Black's ψ stands in the centre of the board, there are only two squares to which it can safely move.

32...ψa5 33.εg7+ εh8 34.εxh7+ εg8 35.εcg7+ εf8 36.εe6+ εe8

White has the choice of three checkmates, 37.εh8#, 37.εg8# or... 37.εe7# 1-0

Stuart, P W NM – Dive, R J IM  
Round 2 [E73]

Notes by NM Peter Stuart

1.c4 g6 2.εc3 Qg7 3.d4 εf6 4.e4 d6 5.εe2 0-0 6.εg5 h6 7.εe3 e5 8.d5 εbd7 9.g4 εe8 10.ψd2 εh7 11.h4 c6 12.h5 g5 13.εh3 cxd5 14.cxd5 a6! 15.f3 b5 16.εf2

Better is 16.0-0 with the idea of εf2.

16...εb6 17.b4 Qd7 18.εhc1

Better is 18.εhb1.

18...Qf6 19.εg3 ψb8 20.εf2 εg7 21.εfd1 εc8 22.εb2 Qd8 23.ψe1

Better is 23.ψd1.

23...εe8 24.ψd1 ψb7 25.ψb3 εcb8 26.εcb1 εc8 27.a4 Qb6 28.εxb6 bxa4 29.εcxa4 εxb6 30.εxb6

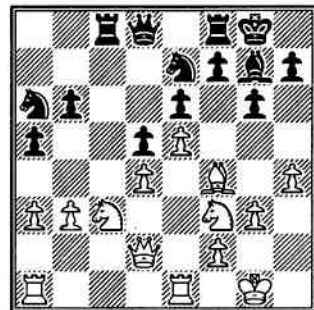
30.εc5? dxc5 31.bxc5 εa4! 32.ψxb7 εxb7 33.c6 Qxc6 34.dxc6 εxb2 35.εxb2 εxb2 36.εa2 εb8+.

30...ψxb6 31.εc4 ψd8 32.εa5 ψf6 33.ψe3 ψf4+ 34.ψxf4 gxf4+ 35.εf2 εb6 36.εc4 εb7 37.εb2 εg7 38.εa5 εb6 39.εc4 εb7 40.εa5 εb6 41.εc4 εb7 42.εa5 ½-½

Dreyer, FM M P – Stuart, NM P W  
Round 3 [A04]

Notes by NM Peter Stuart

1.e4 c5 2.εf3 e6 3.d3 εc6 4.g3 g6 5.εg2 Qg7 6.0-0 εge7 7.c3 0-0 8.d4 cxd4 9.cxd4 d5 10.e5 b6 11.εe1 εa5 12.b3 εac6 13.εf4 a5 14.εc3 Qa6 15.ψd2 εb4 16.εf1 Qxf1 17.εxf1 εc8 18.a3 εa6 19.h4



19...ψd7?

19...h5.

20.h5 εc7 21.a4 εb4 22.εg2 εfc8 23.εac1 εc6 24.εh1 g5 25.εxg5+- ε8c7 26.εf6 εf5 27.g4 Qh6 28.εg5 Qxg5 29.ψxg5+ εf8 30.gxf5 exf5 31.εe2 εc2 32.εxc2 εxc2 33.εf4 εc3 34.h6 εxb3 35.ψg7+ εe8 36.ψxh7 1-0

Garbett, P FM – Dreyer, M FM  
Round 4

1.e4 e6 2.d4 d5 3.εc3 Qb4 4.e5 c5 5.a3 Qxc3+ 6.bxc3 ψc7 7.εf3 εe7 8.h4 b6 9.εb5+ Qd7 10.Qd3 Qa4 11.h5 h6 12.0-0 εd7 13.Qd2 0-0-0 14.εh4 c4 15.εe2 εf5 16.εxf5 exf5 17.εb1 εf8 18.εb4 b5 19.εb2 g5 20.f4 g4 21.εxg4 fxg4 22.ψxg4+ εe6 23.εe1 εhg8 24.ψf3 ψe7 25.εa2 f5 26.exf6 ψxf6 27.εh2 ψf5 28.εg3 Qxc2 29.εxc2 ψxc2 30.f5 εxg3 31.ψxg3 ψe2 32.εg1 εg5 33.εe1 εe4 34.ψh4 ψd2 35.εxe4 εg8 36.ψh3 ψc1+ 37.εh2 dxe4 38.f6+ εc7 39.ψe6 ψf4+ 40.εg1 ψg4 41.ψe5+ εb6 42.ψc5+ εa6 43.ψd6+ εb7 44.ψd5+ εc7 45.ψc5+ εd7 46.ψxa7+ εd8 47.ψe7+ ½-½

Smith, R W NM – Dive, R J IM  
Round 4

1.e4 εf6 2.e5 εd5 3.c4 εb6 4.c5 εd5 5.εc4 e6 6.εc3 εxc3 7.dxc3 εc6 8.Qf4 Qxc5 9.ψg4 Qf8 10.εf3 d5 11.0-0-0 Qd7 12.Qd3 ψe7 13.h4 0-0-0 14.h5 ψc5 15.εb1 h6 16.εg3 ψb6 17.εd2 εb8 18.εh4 εc8 19.ψf4 Qe8 20.g4 εd8 21.g5 hxg5 22.εxg5 c5 23.εh4 c4 24.εf1 εc6 25.h6 gxh6 26.εxh6 Qc5 27.ψh2 d4 28.εxd4 εxd4 29.εdxd4 εxh6 30.εxh6 Qxd4 31.cxd4 ψxd4 32.ψh5 c3 33.bxc3 ψxc3 34.ψd1 Qa4 0-1

Garbett, P FM – Kulashko, A  
Round 5

1.e4 c5 2.εf3 e6 3.d4 cxd4 4.εxd4 εf6 5.εc3 d6 6.g4 a6 7.g5 εfd7 8.ψh5 ψb6 9.εb3 εc6 10.εe3 ψc7 11.0-0-0 b5 12.f4 b4 13.εa4 Qb7 14.Qd3 εa5 15.g6 εxb3+ 16.axb3 εf6 17.gxf7+ ψxf7 18.ψa5 εg4 19.ψb6 εxe3 20.ψxc3 d5 21.εhf1 Qd6 22.exd5 0-0 23.dxe6 ψxf4 24.ψxf4 Qxf4+ 25.εb1 Qe3 26.Qc4 εfe8 27.εde1 Qa7 28.e7+ εh8 29.εf7 1-0

Stuart, P W NM – Sarapu, O IM  
Round 5 [A28]

Notes by NM Peter Stuart

1.c4 e5 2.εc3 εf6 3.εf3 εc6 4.e3 Qb4 5.ψc2 0-0 6.εd5 εe8 7.ψf5 e4?? 8.εg5 Qe7 9.εxf6+ Qxf6 10.ψxh7+ εf8 11.εxe4 d5 12.cxd5 εb4 13.Qb5! c6 14.ψh8+ Qe7 15.d6+ Qd7

15...Qe6 16.Qc4+ Qd7 17.ψh3+ εe6 18.0-0+-.

16.ψh3+ εe6 17.Qa4 Qe8 18.ψh8+ Qd7 19.εc5+ Qxd6 20.ψxd8+ Qxd8 21.εxe6 Qxe6 22.d4 εd3+ 23.εe2 Qc4 24.εf3 g5 25.Qc2 Qc7 26.Qxd3?! 26.e4!+-.

26...Qxd3 27.e4 f6 28.Qd2 Qd7 29.εe3 Qc4 30.g3 εe8 31.b3 Qd5 32.f3 g4 33.εd3 Qe6 34.fxg4 Qxg4 35.εaf1 f5 36.e5 Qh3 37.εf2 Qe6 38.εc1 Qb6 39.Qb4 a6 40.Qc5 Qd8 41.Qb4 εg8 42.Qd2 Qb6 43.Qc3 Qd5 44.εc4 Qa7 45.a4 εd8 46.εc1 c5 47.dxc5 Qxe5+ 48.εc3

48.εc4!?

48...a5

48...εe4 49.εf4+! Qxe3? [49...εe5] 50.εe1#. 49.εf4+ εf6 50.εd2 εc8 51.Qd6 b6 52.εc4 f4!? 53.gxf4 Qe6+ 54.εb5 bxc5 55.εxa5 c4! 56.εe5+ εf5 57.εdc2 Qe3 58.εb1

58.εxc4 Qxc1 59.εxc8 Qxc8 60.b4 Qd2 61.Qd6 Qe6 62.Qc5 Qxf4 63.h4 Qc7+ 64.Qb6 Qg3=.

58...εa8+ 59.εb4 cxb3 60.εc6 Qd2+ 61.εa3 Qd5 62.εd6 Qe4 63.εxb3

63.εf6+ εg4 64.εxb3+-.

63...Qc1+ 64.εb4 Qc2 65.εc6

65.εc3 εxa4+ 66.εb5 εa2.

65...εxb3

65...Qd2+ 66.εbc3 εxa4+ 67.εb5 Qxc3 68.εxc3 εa2 69.εc5+-.

66.εxb3 Qxf4 67.Qxf4 Qxf4 68.εc5+- Qe4 69.h4 Qd4 70.εb4 εf8 71.εg5 εf1 72.εb5 εb1+ 73.εc6 Qe4 74.a5 εa1 75.h5 Qf4 76.εb5 εg4 77.εb7 εf1 78.a6 εf7+ 79.εb6 εf6+ 80.εa5 εf7 81.h6 εh7 82.εb6 Qf5 83.εc6 Qe5 84.εb6 Qd5 85.a7 εh8 86.εg6 εf8 87.h7 εh8 88.εg8 εxh7 89.a8ψ+ 1-0

## 1996 New Zealand Women's Championship

Auckland Chess Centre conducted the 1996 New Zealand Women's Championship at Easter under difficulties, because the centre accepted the responsibility at a late stage as no other club offered to host the event.

The championship attracted only seven entries, but while the tournament ran smoothly there was a surprise start when the titleholder and favourite, Vivian Smith, lost in the first two rounds to the Ong sisters, Winnie and Joyce. Vivian played herself into form and finished strongly, but could not catch up as Joyce and Winnie Ong went on to win all their other games.

Joyce, 19, and Winnie, 17 met in the last round, and the title went to Winnie. There were no draws. Final results: 1 W Ong 6/7, 2 J Ong 5, 3 V Smith 4, 4 Helen Courtney 3, 5 L Parlane 2, 6 E Otene 1, 7 Z Kingston 0.

FM Jonathan Sarfati has provided notes for the following selection of games.

### Ong, W - Smith, V

1.d4 e2f6 2.c4 g6 3.e3c3 g7 4.g5 d6 5.h3 c6 6.f3f3 7.g7 7.g7f4

White should develop something rather than move this e again.

7...0-0 8.e3 e2bd7 9.e2e5 10.e2h2 e8 11.0-0 d8.

Also undeveloping.

12.e2d2 e7 13.f3f3 h6 14.e1e1 h7 15.d5

Reduces the scope of both e's.

15...c5 16.e2b5 e2df6 17.e2a6 18.e2c3 e2d7 19.e2d3 f5 20.f3f3 e7 21.e2c2 e2df8 22.e2e2 d7 23.f1f1 h5 24.e2h1 h4 25.g4 g5

25...hxg3.

26.f2g2 e8c8 27.e2d1 e8b8 28.e1e1 f7 29.e2b1 b5 30.cxb5 axb5 31.e4 f4

A pity to remove any chance of a e-side attack.

32.g1g1 e7b7 33.a3 b4 34.axb4 e7xb4 35.e2a2 e8b8 36.b3 d8 37.e2b1 e8a8

The e should have stayed put. Instead, Black should have relocated her other pieces to the e-side.

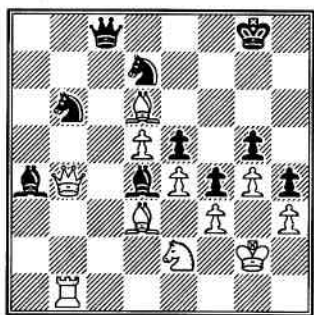
38.e2c2 g5 39.e2a2 e7b7 40.b4 a4 41.e2c3 e8b8?

41...cxb4.

42.bxc5 e7xb1 43.e2xb1 e7xb1?

What was this for? Seems to have been an oversight of some sort.

44.e2xb1 dxc5 45.e2xc5 e2d7 46.e2a7 f8 47.e7b2 e2d6 48.e2d3 e2c8 49.e2b8 e8e8 50.e2c1 e2c5 51.e7b1 e2d4 52.e2b4 e2cb6 53.e2d6 e2c8 54.e2e2



54...e2c2? 55.e2c1 e2e3 56.e2xc2 e8a8 57.e2c3 e8a4 58.e2xe5 1-0

### Ong, J - Ong, W

1.d4 e6 2.e4 c5 3.c3

3.d5.

3...e2b6 4.e2f3 e2c6?! 5.e2e2

5.d5±.

5...e2f6 6.e2d3

6.d5; 6.e5.

6...e2e7 7.0-0 8.e2d1 d5 9.e5 e2e4 10.b3?

10.e2bd2.

10...cxd4 11.cxd4 e2b4+ 12.e2b5 e2c2

13.e2b2 e2xa1 14.e2xa1 e2xb5 15.e2xb5 a6

16.e2c2 d7 17.e2e1 e2b5 18.e2g4 g5 19.f3?

e2c3+ 0-1

### Ong, J - Smith, V

1.d4 e2f6 2.c4 c5 3.e3 g6 4.e2f3 g7 5.e2e2 0-0 6.0-0 b6

6...d5.

7.e2c3 e2b7 8.d5 d6 9.e2c2 e2bd7

9...e6.

10.e2b1

10. a3 would be a better preparation for b4. But White should be aiming for e4-5.

10...a6 11.a4 e2c7 12.b3 e8ad8 13.e2b2 e2c8 14.h3 e2e5?! 15.e2xe5 dxe5 16.g7f3

Doesn't belong here.

16...e2e8 17.e4 e2d6 18.g4 f6 19.g2g2 d7 20.e2c1 e2c8 21.e2e2 f5 22.f3f4 23.h4 e2c7 24.f2f2 h6 25.f1f1 e7f7 26.e7h2 e7g8 27.e7f2 e7b8 28.e7h3 e2c8 29.e7g2 g5

Black should probably sit tight on the e-side.

30.hxg5

This should have been prepared first, by lining up the majors on the h-file. 30.e7f2 h5 31.g2g2.

30...hxg5 31.e7f2 e7f7 32.e2f1 e7h8 33.e2b2 e2c7 34.e2e1 e7bg8 35.e7bg2 e2c8 36.e2d2 e7xh2 37.e7xh2 e7h8 38.e2b2 e7xh2 39.e7xh2 e7h8 40.e7xh8 e7xh8 41.e2d1 e6?

Black has some weak f's which require urgent attention. 41...a5 42.e2f2 e7g6 43.e2d3 e2f7=.

42.e2f2 b5

42...a5 43.e2d3; 42...e7g6 43.e2d3 e2f7 44.a5.

43.axb5 axb5 44.e2d3+- exd5 45.e2xe5+ e2e8 46.cxd5 e2xe5 47.e2xe5 e2e7 48.e2f2 e2f7 49.e2c7 e2d6 50.e5 e2b7 51.e2d3 e2e8 52.e2f5 e4 53.bxc4 bxc4 54.e2e2 e2b5 55.e2d2 e2e8 56.e2b6 e2e7 57.e2c3 e2e8 58.e2d4 e2e7 59.e2c7 e2e8 60.d6 1-0

### Smith, V - Kingston, Z

1.e4 c5 2.e2c3 e2c6 3.f4 e6 4.e2c4 d6 5.e2f3 e2g7 6.d3 g6 7.0-0 g7 8.e2e1 e2c7 9.e2h1 0-0 10.f5 exf5 11.e2h4 h5?

Weakening the e-side without good reason.

12.g5g5 e6 13.e2d5 e2xd5? 14.exd5

Winning a piece.

14...exd5 15.e2xd5 e2xb2 16.e8a1 g7

17.e2f6 e8a8 18.e2xg7

18.g5g5 e7h7 19.e2xg7 e2xg7 20.e2h4.

18...e2xg7 19.e8be1 e8be8 20.g5g3 e2d7

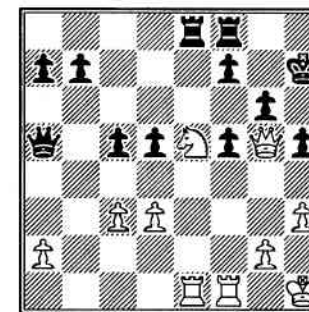
21.e2xc6 e2xc6 22.e2h4 e2h7 23.e2f3 e2g8

24.e2h4 e2h7 25.e2f3 e2g8 26.h3

Rather a lot of timewasting.

26...d5 27.e2h4 e2h7 28.e2f3 e2g8 29.c3 e8a4

30.e2e5 e2h7 31.g5g5 e8a5



32.e7xf5! e2xc3

32...gxf5 33.e2xh5+ e2g7 34.g5g5+ e2h8 [4...e2h7 35.e2x7+ e2h6 36.e2g4+ e2g7 37.g5g5+ e2h8 38.e2h6+ e2g8 39.e2f6#] 35.e2h6+ e2g8 36.e2e3 f4 37.e2xf4 e2c6 38.g5g3+ e2h7 39.g5g5+.

33.e7xf7+! e2h8 34.e2h6+ e2g8 35.g5g7# 1-0

### Courtney, H - Ong, J

1.e4 e6 2.d4 c5 3.e2f3

3.d5.

3...d5?! 4.e2c3

4.exd5 exd5 5.e2b5+ e2c6 6.0-0±.

4...e2c6 5.e2b5

5.exd5 exd5 6.e2b5.

5...a6 6.e2xc6+ bxc6 7.0-0 cxd4 8.e2xd4 e2f6

9.e5 e2d7 10.g5g5 e2e7 11.e2f4 0-0 12.e8ae1 a5

13.g5g4 e2xg5 14.e2xg5 e2e7 15.e2xh7?

Too reckless. White has too few pieces around to assist.

15...e2xh7 16.e2h5+ e2g8 17.e2e3 e2xe5?!

A bit panicky, but it gives Black a good position. 17...f6 18.e2h3 e2xe5 19.e2h7+ e2f7 20.e2h5+ g6 21.e2h7+ e2e8+.

18.e2xe5 f6 19.e2e3 e5 20.e2e2 e2f7 21.e2xf7+ e2xf7 22.f3 e2e6+ 23.c5 c5 24.f4 e4 25.f5 d7 26.g4 e2fe8 27.e2f4

Black's next should have been hindered, if possible.

27...d4 28.cxd4 cxd4 29.e2e2? e2b5 30.e2d1 e2xe2 31.e2xe2 d3 32.e2f4 e8ad8 33.e2f1 e3?!

33...d2 34.e2e2 e3 35.e2g2 e2d4 36.h3 e2c4.

34.e2xd3 e2e+ 35.e2e1 e2xd3 36.e2xd3 g6

37.f5g6+ e2xg6 38.e2f4+ e2g5 39.h3?

39.e2xe2 e2xg4+.

39...e2xf4 0-1

## Debo's Kapiti Rapid

By Les Jones

On Saturday, April 20, the Kapiti Chess Club hosted the DEBO's rapid-play chess tournament in the Hadfield room, Coastlands Shoppingtown. Thanks to the generous sponsorship from the Lion Foundation and DEBO's Direct Liquor Drive-inn Paraparamu the \$1650 prize fund attracted 42 players from all over the region and guaranteed some exciting chess.

The first of the six rounds was delayed for a few minutes while we waited for Bob Smith, whose flight from Auckland was an hour late (not the fault of Wellington's weather). Despite the delay Bob (who only had four hours' sleep) and most of the top seeds made it through the first round unscathed. There were a few upsets, however. Mark van der Hoorn 1901 lost to Ted Frost 1501, Paul Tuffery 1888 lost to Aaron Barlow 1470, and Shamnika Rupasinghe 1851 could only draw against John Whibley 1422.

Round 2 and no upsets as the top seeds settled down to business. Aaron Barlow continued with his good form by drawing with 13th seed, John McDonald.

Round 3 saw the four top seeds winning their games; IM Russell Dive beat Mark Sinclair, FM Anthony Ker beat last year's tournament winner Rajko Mastilovich, a tired Bob Smith beat Gavin Marner, and FM Jonathan Sarfati beat Chris Burns.

Round 4 and things were getting interesting. Only the top four seeds were on the maximum 3 points. Dive had to play fellow joint NZ champion Smith, while Wellington's Ker and Sarfati were paired against each other. Both games were extremely tense, and in the time scramble at the end of the games Dive and Ker emerged the victors and, with just two rounds to go, were a whole point clear of their rivals.

Round 5 and Ker and Dive were drawn to play each other. The winner of this game was guaranteed a share of the \$500 first

prize. However, after a very tense battle and with only a few seconds left on both clocks, neither player could force a win and a draw was agreed. Meanwhile, Sarfati and Smith won and now were only half a point behind the two leaders.

Round 6 was the final round and Dive was paired with Sarfati, while Ker was paired with Smith. For both Sarfati and Smith it was a must-win situation, while Dive and Ker could afford to draw and still share first. Both games were hard-fought, with Sarfati and Smith complicating the positions early on, and Dive and Ker using up a lot of time as they tried to calculate a safe route through the tactical possibilities. In the time scramble at the end of these games, Sarfati and Smith retained the initiative and managed to force wins against their opponents.

While all eyes had been watching the top boards in the final round, Mark Sinclair managed to sneak through from the middle of the field to tie with Sarfati and Smith for first place by beating Ross Jackson.

The B grade was won by Ross Jackson, with Martin Post and Scott McLeod second equal. The C grade was won by Tyrone Garratt (Napier) with John Whibley and John Cook second equal.

Here are the two crucial last-round games, plus another of Bob Smith's wins.

### Ker, A FM – Smith, R W NM

Notes by Bob Smith

1.d4 ♖f6 2.c4 g6

A draw was the same as a loss in this game, so I chose a "fighting" defence.

3.♗c3 ♖g7 4.e4 d6 5.f3

Evidently White is also aiming to win.

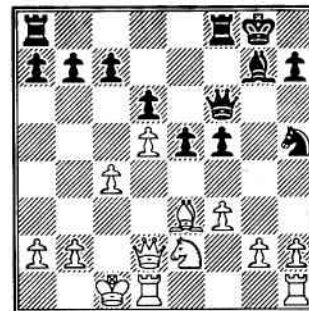
5...0-0 6.♗e3 ♗c6 7.♗d3

I was pleased to see this variation, as I don't rate it highly.

7...e5 8.d5 ♗d4 9.♗ge2 ♗h5 10.♗d2 ♗xe2

To distract a piece from either e4 or f4.  
11.♗xe2 f5 12.exf5 ♗xf5 13.♗xf5 gxf5 14.0-0 ♗f6

Definitely a 30-minute game move.



15.f4

This turns out badly. Perhaps 15.♗b1 or ♗c3 was better.

15...♗ae8 16.♗h1 ♗xf4

Opting for an advantageous ♗ ending.  
17.♗xf4 exf4 18.♗d4

Not 18.♗xf4 ♗e4!-+ or 18.♗xf4 ♗xe3!

18...♗xd4 19.♗xd4 ♗xd4 20.♗xd4 ♗e2

White had banked on his ♗ sacrifice being temporary, but this penetration down the e-file throws a spanner in the works.

21.♗d2 ♗e4 22.b3 ♗fe8 23.♗d1 ♗e5  
24.♗df2 ♗d4+ 25.♗c2 ♗e3

Stops 26.♗c3. If now 26.♗xf4 ♗xf4 27.♗xf4 ♗e2 28.♗d3 ♗xg2 29.♗xf5 ♗xh2-+.

26.♗d2 ♗xd2+ 27.♗xd2 ♗e4 28.♗c1 b6  
29.b4 ♗g7 30.a3 ♗f6 31.♗d3 ♗e5

Much better than 31...♗e3+ 32.♗d4 ♗xa3 when White's ♗ is strong.

32.c5

Desperation in a lost position.

32...♗xd5

Here the game moved into "5-minute mode." I can't recall the exact sequence of moves, but it is clear Black has a won game, which I managed to convert fairly easily.

0-1

### Sarfati, J D FM – Dive, R J IM

Notes by Jonathan Sarfati

White had to win to have a chance at the prize money, while Black only needed a

draw. What White should not do is depart from normal style and play beserk attacking moves. That is not playing for a win but for a loss.

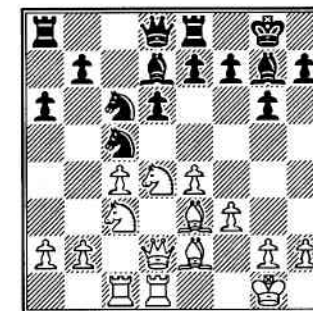
1.c4 ♗f6 2.♗c3 c5 3.♗f3 ♗c6 4.d4 cxd4 5.♗xd4 g6

Allowing the Maroczy Bind, which gives White a pleasant space advantage.

6.e4 ♖g7 7.♗c3 d6 8.♗e2 0-0 9.0-0 ♗d7  
10.♗c1 a6 11.♗d2 ♗c5 12.f3 ♗e8

Black seems to be drifting, as the ♗ breaks of f5 or b5 would only weaken his own position.

13.♗fd1 ♗d7



14.♗xc6

Although the side with more space should generally avoid exchanges, this exchange of one pair of pieces avoids the exchange of two pairs on d4.

14...♗xc6

14...bxc6?? 15.♗xc5+-.

15.♗d5!

The key outpost. If ...♗xd5, then White will normally recapture exd5 with pressure down the e-file.

15...♗c8 16.b3

A safety move. No need to rush matters, and the continual strengthening of White's position caused Black to use up much time trying to ward off White's possible plans.

16...♗d7

16...b5 17.♗b4±.

17.♗b4 ♗b8 18.♗f1

Another safety move, perhaps threatening ♗f2 and ♗b6.



18...♟a5

Probably the decisive error in a worse position. Black's ♖ becomes offside.

19.♖xc6 ♖xc6

19...♟xd2? 20.♖xe7+.

20.♟xa5 ♖xa5 21.c5! dxc5 22.♞xc5

White has a strong ♖-pair and can penetrate to the 7th rank with a ♞.

22...♞xc5 23.♖xc5 ♖f6 24.♞d7 b5 25.♞c7

Trapping the ♖.

25...♟f8 26.f4?!

26.♖b6.

26...♖b2

26...♞c3.

27.♖b6+- ♞d8 28.♖xa5 ♞d1 29.♞c8+ ♟g7

30.♞c3+

Black could have resigned here, as he was a clear piece down and had five minutes less as well.

30...♞xc3 31.♞xc3

Further moves not recorded.

1-0

### Tuffery, P – Smith, R W NM

Notes by Bob Smith

1.d4 ♖f6 2.c4 e6 3.♖c3 ♖b4 4.a3

Paul's favourite line, which I was expecting.

4...♞xc3+ 5.bxc3 c5 6.g3

This has the drawback of reducing the defence of the c-♖.

6...♟a5 7.♖d2 ♖c6 8.d5

Premature; the fixed ♖s favour Black's ♖s.

8...♖e7 9.♖g2 0-0 10.e4 d6 11.♖e2

White is ready to castle and attack on the ♖-side, but...

11...♟a6 12.♟b3 ♞e8

Stops White castling because of the hanging ♖ on e2.

13.♖f4 exd5 14.cxd5 ♖g6 15.f3 ♖e5

Controlling c4 and looking at d3.

16.h4 ♖d7 17.♟f2 ♖a4 18.♟b1 b5 19.♖f1 ♞ab8 20.♞a2 ♖c4 21.♞xc4 bxc4 22.♞b2 ♞b3

A great outpost.

23.♟a1 ♞b8 24.♞hb1 ♞8b6 25.♖c1 ♟b7 26.♖g2 ♖d7 27.♖e3 ♖e5 28.♞xb3

Forced, otherwise ...♖d3 is too strong.

28...cxb3 29.♖b2 c4

Reduces White's ♖ and ♟ to bystanders.

30.f4 ♖d3+ 31.♟g2 ♟e7 32.♟f3 ♖c5 33.e5 ♖b5 34.♖f5 ♟b7 35.♟f2 dxe5 36.fxe5 ♖d3+ 37.♟g1 g6 38.♖e3 ♖xe5 39.♞f1 ♟c7

With a veiled attack on g3 and eyeing the c5-g1 diagonal.

40.♟e1 ♖d3 41.♟e2 ♟xg3+ 42.♖g2 ♞b8 43.♟e7 ♞f8 44.d6 ♖xb2

44...♖c6 would have been quicker, but I was short of time and had seen that this move won.

45.d7 ♖xd7 46.♟xd7 ♟xc3 47.♟xa7 ♖d3 48.♟d7 b2 49.♖e3 ♟c1

and White's flag fell. 0-1

### Waikato Open

With a field of 20, numbers were a little light for the 1996 Waikato Open, perhaps because it was squeezed between the Waitakere Open and Easter. However, the tournament was reasonably strong with the top group including Ewen Green, Scott Wastney and Ferenc Fabri.

Outright winner was Fabri with 5½, followed by Green 5 and Bob Gibbons 4½. The elective bye was introduced in this tournament, allowing players to take a half-point bye with advance notice. Four players took advantage of this.

### Correspondence matches

New Zealand correspondence players are competing in nine international matches, and progress scores (with the number of boards and the name of the team captain) are:

- Italy (8, Brian Millar) 4-8.
- Canada (20, Michael Freeman) 15½-17½.
- Sweden (16, Nick Cummings) 3-3.
- England (BCCA) (12, Chris Mold) 3-1.
- England (BPCF) (11, Chris Mold) 0-0.
- PATT/3 (6, Brett Sinclair) 22½-19½.
- XII Olympiad (6, Brett Sinclair) 16-38.
- Hong Kong (13, Chris Mold) 0-0.
- Wales (14, Scott Wastney) 0-0.

A selection of correspondence games will appear in the next issue of *NZ Chess*.

## Junior and age group championships

Several regional junior and age group championships have been held, as preliminaries for the national junior and age group championships to be held in Wellington in the second week in July.

As this issue of *NZ Chess* went to press there were 19 entries in the national event, a fortnight before the closing date. The expected participants include David Guthrie, Russell Metge, and Rosaleen and Teresa Sheehan. Most of these entrants are rated, so the event will be nationally rated -giving several unrated participants the opportunity to join the national standard rating list.

### Otago

In Dunedin, 18 players competed in the Otago event, which was a pleasing increase on last year. The event was run as a 40/40, and top seed David Guthrie won with a picket fence, 8/8. The runner-up was Kyaw Soe Win Pau, on 6½, who also won the J J Marlow Trophy for best schoolpupil. David Galletly was third, and was top player under 16. Ismail Jadallah was the runner-up in the under-16 section, with Hwee Sin Chong third.

In the under-12 section Nicola Porteous, Sam McCall and Paul Chong all scored 4, with Nicola being placed first, Sam second

### Guthrie in Asian junior

New Zealand's outstanding junior of the past three years, David Guthrie, has decided to play in the 1996 Asian Junior Championship, which will be held in Macau (on the Asian mainland just south of Hong Kong), from 12 to 27 August.

NZCF is contributing \$200 towards David's travel costs.

FIDE advises that games from this tournament can be seen on the Macau Chess Federation's Internet home page at:

<http://www.unitel.net/chess.macau/>

and Paul third. Nicola won the Gerald Williams Trophy and Sam and Paul shared the John van Zoomeren Trophy.

There were five girls in the field, and Chamila de Alwis and Hwee Sin Chong share the Jackie Sievey Trophy.

### Canterbury

Only eight players contested the Canterbury championships, with Thor Russell taking the junior title with 6½/7., ahead of Matthew McNabb 6 and Craig Hall 5. Heathcliff Johnson-Rongo, with 4½, won the under-16 title and Thomas Kitson, on 2, the under-12.

### Wellington

Justin Phillips, the top seed, won the Wellington junior title with 5/5. The 30/30 event attracted 17 entries, including four girls, so for the first time under-16 and under-12 girls' titles were awarded.

History was made in the under-16 and schoolpupil sections, which were won by primary school pupil, 10-year-old Patrick Savage, with 4 points. Patrick was joint runner-up overall, with Bryan Clark, and naturally also won the Under-12 section.

Joseph Wong was runner-up in the under-16 section, with Arvind Vinjimoore and Ashley Bishop third equal, and 7-year-old Ivan Luketina was second in the under-12 section. Joseph Wong and Cameron Jack were runners-up in the schoolpupil section.

The under-16 girls title was shared by Tracy Collen, Ingrid Bauer and Deborah Crook, with Ingrid and Deborah sharing the under-12 title.

### Upper Hutt

Ten players competed in a 15/15 tournament in Upper Hutt, with Ashley Bishop 5/5 winning the under-16 event ahead of David Kevey 3½ and Ben Kelly 3. The under-12 event was won by Craig Addley 5/5, with Ivan Luketina second on 3½ and Genevieve Luketina third on 3.

## Sarfati takes Civic Easter double

In Wellington's Civic Easter tournaments, FM Jonathan Sarfati led throughout in both the three-day standard event and the one-day rapid on Easter Monday. In the open Sarfati scored 5½/6 and drew with Richard Glover in the last round after winning all earlier games, and in the rapid he scored 5/6 after drawing with Chris Burns in round 5 and Martin Post in the final round.

Gavin Marner was runner-up in the open with 4½, losing to Sarfati and drawing with Rajko Mastilovich. Third place was shared by a group comprising Richard Glover, Scott Wastney (who did not meet Sarfati and lost to Alan Winfield and Mastilovich in the middle rounds), Mastilovich, Scott McLeod and Winfield.

There followed Robert Edwards, Michael Nyberg, Rosaleen Sheehan and John Mazur on 3½, and Eddie Sarfas and Ted Frost on 3.

McLeod took the B grade prize, half a point ahead of Edwards, Nyberg and Mazur. Rosaleen Sheehan took the C grade by half a point from Sarfas.

In the rapid Sarfati beat Hilton Bennett in round 3 and Mastilovich in round 4, to gain a clear lead from Post and Bennett. While Sarfati and Burns drew in round 5, Post beat Zyg Frankel to be clear second on 4 and be paired with Sarfati in the last round. They quickly drew, while Mastilovich beat Burns and Bennett beat Tim Hare. This left Post, Mastilovich and Hare second equal on 4½, ahead of Alan Aldridge on 4 and Anthony Steventon, McLeod and Burns on 3½.

Given the opportunity in the rapid event, Sarfati produced this vigorous win.

### Bennett, H – Sarfati, J D FM

Notes by FM Anthony Ker

#### 1.b4

During the 1924 New York tournament GM Tartakower visited the local zoo and was fascinated by the orang-utans. He decided to name his new opening in their honour. Later it became known as the Sokolsky opening,

but I like Tartakower's choice more. 1.b4 is an offbeat move with two ideas: fianchettoing the queen's bishop and discouraging Black moves such as ...c5 and ...c6.

#### 1...e5 2.♖b2 ♗xb4 3.f4?!

The standard move is 3.Bxe5. This is a very suspect alternative.

#### 3...d6

Black could take the ♠. The game might continue 3...exf4 4.♗xg7 ♜b4 5.g3 fxg3 6.♗f3 g2+ 7.♗hx4 gxh1=♙ with advantage to Black. Sarfati's choice is more solid.

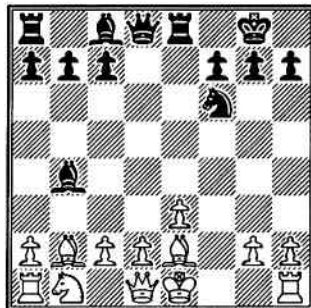
#### 4.♗f3 ♗c6

4...f6 was possible, holding on to the ♠.

#### 5.fxe5 dxe5 6.♗xe5 ♗xe5 7.♗xe5 ♗f6 8.e3 0-0

White's opening experiment is a failure. He has fallen behind in development and must hurry to catch up.

#### 9.♗e2 ♗e8 10.♗b2



#### 10...♗xe3

A well-judged exchange sacrifice. Black must act quickly before White consolidates and this is the answer.

#### 11.c3

Otherwise White is a ♠ down for nothing. Now both ♗ and ♗ are under attack.

#### 11...♗xe2+ 12.♙xe2 ♗g4 13.♙e3 ♙d5

Threatening 14...♗e8. White's ♗ and ♙ are no match for Black's entire army.

(Continued foot of next page)

## Preparations for 1996 Olympiad in Erevan

Preparations for sending a New Zealand team to this year's Olympiad in Erevan have run into a mix of problems which seem to affect every Olympiad - especially those held in remote countries such as Armenia, which present massive transport problems for the rest of the world.

Team captain Michael Freeman has been wrestling with the transport problems, and international efforts have been made to arrange charter flights to Erevan from various points around the world. Latest advice from FIDE is that 79 countries have applied to participate in charter flights.

The latest arrangements have the New Zealand team departing on Friday, 13 September, to Athens via Singapore. There they plan to join one of the special charter flights. Return travel is by the same route, arriving home on 7 October. However, to date the organisers have not confirmed details of costs and schedules of the charters.

### Bennett-Sarfati

(Continued from previous page)

#### 14.0-0 ♗e8 15.♙g3 ♗d6 16.♙h4 ♗e2 17.♗f2 ♗e1+ 18.♗f1 ♗xf1+

After 19.♗xf1 ♙d3+ 20.♗g1 ♗c5+, mate follows.

#### 0-1

Here's how Richard Glover gained a draw with Sarfati in the final round of the major event.

### Glover, R – Sarfati, J D FM

1.e4 e5 2.♗f3 ♗c6 3.♗c4 ♗f6 4.d4 exd4 5.0-0 ♗xe4 6.♗e1 d5 7.♗xd5 ♙xd5 8.♗c3 ♙a5 9.♗xe4 ♗e6 10.♗eg5 0-0-0 11.♗xe6 fxe6 12.♗xe6 ♗d6 13.♗g5 ♗de8 14.♙e1 ♙xe1+ 15.♗axe1 ♗d7 16.♗xe8 ♗xe8 17.♗xe8 ♗xe8 18.♗f1 ♗d7 19.♗d2 h6 20.♗e2 ♗e6 21.♗d3 ♗d5 22.♗xd4 ♗xd4 23.c4+ ♗e6 24.♗xd4 ♗e5+ 25.♗e4 ♗xb2 26.♗e3 a6 27.♗d4 ♗xd4 28.♗xd4 b6 29.a4 c6 30.♗e4 h5 31.g3 g6 32.h3 ♗f6 33.f4 ♗e6 34.g4 h4 35.♗d4 ½-½

The costs of travel led to the withdrawals of FM Anthony Ker and Mark Sinclair from the open team. At a late stage FM Mark Noble was added, and Michael Freeman agreed to make a sixth part-time playing member.

The playing order of the open team is:

1 FM Ben Martin 2 FM Martin Dreyer  
3 NM Bob Smith 4 FM Mark Noble  
5 Scott Wastney 6 Michael Freeman

The women's team has been more settled, with no changes. The playing order will be:

1 Vivian Smith 2 Rosaleen Sheehan  
3 Edith Otene 4 Teresa Sheehan

While NZCF Council has been sympathetic to the need for a separate team captain for the women's team, no-one has come forward to fill this role. However, the addition of Mark Noble strengthens support for the women's team, as he has been coach to the Sheehan sisters for several years.

The transport problems mean that unwanted overnight stays might be inevitable, in both directions, and these add to the cost. NZCF Council has decided that it can give only limited assistance towards this extra cost.

The federation's appeal for financial support for the Olympiad resulted in a very generous anonymous donation of \$1000.00, which has boosted the total well above the response for the last Olympiad. As Alan Fletcher has pointed out, every dollar counts and donations of \$5 or \$10 are just as welcome as those of \$50 or \$100 or more.

Previously acknowledged	\$100.00
Alan Fletcher	\$50.00
Anon	\$1000.00
R J Dive	\$100.00
G E Trundle	\$100.00
J Cook	\$20.00
T Colthorp	\$5.00
Wanganui CC	\$100.00
Total to date	\$1475.00



Features of 1-996 N.Z. rating list

Some notable achievements and a few changes in presentation are included in the mid-year New Zealand rating list which appears on the following pages.

Several players, particularly some of our most promising juniors, have made substantial gains in rating in the period. Most notable of these is Winnie Ong, whose 6/6 win in the New Zealand Women's Championship has lifted her rating by 308 points, from 1258 to 1566, and from 397th to 211th on the overall list.

Russell Metge's Major Open win at Congress has lifted him by 188 points, from 1716 to 1904, and from 131st to 65th place.

Other noteworthy gains include:

Matthew Barlow +121, from 2030 to 2151.

Peter Hawkes +101, from 1958 to 2059.

Mark Sinclair, +69, from 2044 to 2113.

Nigel Metge +68, from 2020 to 2088.

David Guthrie +52, from 1979 to 2031.

In addition to Winnie Ong, sister Joyce gained 98 points, rising from 1337 to 1435, and Rosaleen Sheehan gained 72 points, rising from 1297 to 1369.

Changes in presentation

The published lists in the past have included players who have been active in clubs in the previous two years. The present list also includes some players who have been active, but without a club identification. In the club column these players are marked "?."

Juniors (mostly school pupils) who have gained ratings but are not club members are identified with "SS". A few players who have registered this year, but have not given club affiliations, are marked "ZZ."

Arising from the introduction of registration, accuracy has been improved through some amendments to names, addition of first names, and changes in club membership which had not been notified.

Lists of top junior players, in age groups, and women and girls, will be published in the next issue of *NZ Chess*.

1996 Latvian Gambit tournament

Leonard McLaren was outright winner in a field of 23 which contested the A grade in Howick-Pakuranga CC's 1996 Latvian Gambit tournament. Leonard, seeded at number 6, scored 5½/6, drawing with Martin Dreyer and winning against Ewen Green but not meeting any of the top four seeds.

Dreyer finished second on 5, drawing with Ferenc Fabri as well as McLaren. Fabri on 4½ was third, with Alexei Kulashko fourth on 4, ahead of Paul Garbett, Bob Smith, Ewen Green, Peter Stuart, Benji Lim, Geoffrey Gill and Robert Goris all on 3½.

Paul Spiller reports that McLaren and Dreyer played their usual level of consistent chess. Top seed Aleksei Kulashko started off rather poorly, but Paul believes this was because he was not used to playing this kind of time control. Kulashko won his last three games and will be a great asset to the Auckland chess community.

Fabri also played strongly, but Paul Garbett could not repeat his success two years ago, losing to Fabri and Scott Wastney.

In the under 1700 section, with 39 entrants, Justin Davis played consistently to win with 5½/6 (draw with Eddie Arvin). Other contenders succumbed to last-round pressure, notably Eddie Arvin who had previously beaten both Richard Beesley and Ben Giles.

Joyce Ong had 4/5 and a chance of a good placing but slipped up in her last-round clash with Richard Beesley.

Last year's joint winner, Robert Phillips, finished in a tie with Beesley for second on 5, after a last-round win over Eddie Arvin. There followed Mark Henderson, and Arvin on 4½, and top seed Ben Giles, Tom Evans, Niel van der Walt, Joyce Ong, Daniel Goudie and Mark Chilvers on 4.

Standard tournaments rated this period were the NZ Ch'p; NZ Reserve; NZ Major Open; NZ Women's Ch'p; Waikato Open; All Canterbury Ch'p; Kapiti CC Ch'p A/B; Upper Hutt CC Ch'p A/B; North Shore CC Ch'p A/B/C; Wellington CC Spring Open; Waitemata CC Ch'p, Reserve Ch'p, Under 400 and Summer Cup; WCC Summer Cup, Summer Mini 1/2, Match and Teams Tourney; ACC Summer Cup A/B/C/D; Otago Easter and Mini 2 A/B/C; ACA Invitational; CCC Colthart Cup, Civic Sh'p, Summer Cup and Easter.

Rapid Tournaments rated in this period are N Shore Rapid Ch'p; NZ Rapid Ch'p; WCC Rapid Ch'p; HP CC Allegro Gr1/2/3; Wairarapa 30/30; Otago Mini 3 A/B; WCC Teams tourney and Junior Summer Open; Otago Rapid Ch'p Senior/Intermediate/Junior, Summer Rapid; Kapiti Debo Rapid; Civic Easter Rapid.

Only players who have played in the last 2 years are listed. Each line shows Rank, Name, Club, Code, Standard games played this period, Standard rating, Rapid games played this period, Rapid rating. An asterix indicates a provisional rating. Ranking is based on standard rating where one exists.

1	SMALL VA	CA	16	2317		2361	51	MCNALLY I	AC	673	1959	1855
2	KER AF	CT	383	11 2296	15	2276	52	JEVTIC S	NS	1984	unr	6 1956*
3	NOKES RI	NS	178	2296		2283	53	MONRAD PG	PE	600	1953	1939
4	GARBETT PA	NS	2	17 2275	6	2277	54	LIM B	HP	1124	1946	8 1793*
5	DIVE RJ	CI	459	11 2254	15	2299	55	COOPER DJ	WA	350	11 1943	1961
6	NOBLE MF	PE	255	2244	9	2265	56	CONNOR BP	PE	498	1940	1863
7	SMITH RW	WT	88	24 2238	14	2267	57	LOVRICH M	?	1976	unr	9 1939*
8	SUTTON RJ	CI	3	5 2217		2067*	58	NIJMAN B	NE	394	1937	1920
9	DREYER MP	AC	460	11 2215		2228	59	JORDAN AW	CI	511	1934	1950
10	GREEN EM	HP	7	2212	8	2176	60	WHEELER B	AC	386	9 1929	1980
11	GREEN PR	AC	199	2209		2180	61	POMEROY AJ	CI	13	6 1922	2013
12	LUKEY SG	CA	696	2202	9	2180	62	FENERIDIS A	WE	6	1919	1872
13	SARFATI JD	WE	251	17 2196	20	2224	63	GORIS R	AC	1140	15 1918	1801
14	WANSINK R	OT	9	2170		2161	64	BOSWELL TJ	WA	547	1908	1783
15	DUNCAN D	NS	1942	2167*		unr	65	METGE RC	PT	1246	11 1904	9 1825
16	KULASHKO A	AC	1989	9 2158*		unr	66	MARNER G	PE	253	17 1901	6 1878
17	BARLOW MJ	NS	291	19 2151		2099	67	POMEROY DM	?	303	11 1900	unr
18	MCLAREN LJ	NS	314	13 2145	15	2179	68	TURNER MG	?	417	11 1896	1867
19	SARAPU O	AC	1	8 2145		2195	69	GIBBONS RE	GA	37	5 1887	9 1891
20	LACUNZA JC	?	1825	unr		2135*	70	ZARKOVIC B	AC	1992	8 1887*	unr
21	SINCLAIR M	PE	1364	11 2113	15	2123	71	TURNBULL J	AC	1149	9 1886	1853
22	LOVE AJ	OT	176	18 2112	26	2174	72	SEREBRENI D	AC	2008	12 1882*	unr
23	STUART PW	NS	5	19 2099	12	2148	73	GORDON IR	?	1547	unr	1881*
24	METGE JN	PT	41	11 2088		2004	74	VETHARANIAM	PAR			
25	WASTNEY S	GA	830	22 2085	9	1945			WA	550	1880	9 1738
26	JACKSON JR	GA	29	2084		unr	75	JACOB F	OT	2019	unr	9 1877*
27	BOYD KM	OT	395	2081		2135	76	SWAYNE ED	AC	1143	1867	1775
28	ANDERSON BR	CA	296	2072		unr	77	MCDONALD JA	?	648	1862	6 1811
29	HOPEWELL NH	AC	379	6 2070	8	2106	78	BURNS CJ	WA	1300	11 1849	21 1945
30	SPAIN GA	GA	482	5 2069		2135	79	RUPASINGHE SD	WE	1027	2 1849	6 1853
31	HAWKES PD	GA	101	11 2059		unr	80	POST MJ	WA	393	11 1848	21 1781
32	LEONHARDT W	NS	11	2048	6	2050	81	LYNN KW	HA	32	5 1846	unr
33	FREEMAN MR	NP	151	2044		2085	82	WINFIELD AW	CI	845	23 1846	9 1594
34	WEIR PB	NS	52	2038		1968	83	PERRY R	AC	1830	14 1840	1506*
35	HART R	NS	507	6 2036		1971	84	PACKER A	WA	1945	1839*	unr
36	GUTHRIE DW	OT	1190	17 2031	24	1996	85	ION GJ	NS	301	1838	1862
37	DOWDEN RA	IN	148	2027	14	2135	86	CUMMINGS N	CA	1617	5 1836	2126
38	RADOJEVIC I	AC	1990	7 2025*		unr	87	ARANDJELOVIC M				
39	LAM DKW	AC	1305	2022		1797			AC	1829	1835*	unr
40	SUTHERLAND JL	OT	454	7 2016	6	1856	88	VAN PELT J	WT	327	2 1835	unr
41	SPILLER PS	HP	162	2007	8	2000	89	LATIMER B	AC	1691	9 1833	1844*
42	MASTILOVICH R	PE	1858	17 1997	20	2033	90	KARIM F	WE	1749	1830	1884*
43	TUFFERY PB	ZZ	961	11 1989	6	1881	91	TBAILA R	AS	1706	1828	1829
44	STEADMAN MVR	AC	201	26 1983		unr	92	CASILANG A	AC	1197	1816	unr
45	ELLIOT DB	NS	977	1974	6	1943	93	DAVIES G	CA	433	6 1812	1544*
46	FABRI F	HA	1932	4 1972*		1750*	94	COMPTON AA	CA	970	5 1808	1799
47	LE Y	WA	956	1965		2040*	95	BRIMBLE MT	PT	218	1807	1772
48	VAN DER HOORN	MW					96	HAASE GG	OT	28	17 1804	9 1869
49	WALSH BG	PE	617	11 1963	15	1913	97	THOMPSON B	PT	1943	1804*	unr
50	WEEGENAAR DP	HA	369	1963		unr	98	CARTER GS	UH	238	10 1801	1727
		CA	272	1962		1721*	99	BENNETT HP	HA	89	5 1798	15 1938

100	DUNN P	CI	558	6	1793	6	1894	176	WARD K	AC	1196	8	1630	unr
101	VINCENT MB	OT	986	11	1789	9	1776	177	ARENDS K	AC	1993	8	1628*	unr
102	HAIR PI	NS	993	5	1788	6	1626	178	SNELSON PR	NS	328	11	1628	6 1537
103	PITTS GL	NS	1073		1785		1962*	179	VAN DEN HEUVEL A	NS	1708	11	1628	unr
104	BLAXALL CS	HP	698	5	1781	8	1778			NS	1708	11	1628	unr
105	SINTON PJ	OT	554		1780		1839	180	GOODHALL D	HA	1816		unr	1627*
106	EDWARDS DW	CA	672		1777		1691		JACKSON LR	WE	1333	36	1627	6 1799
107	SCHWASS MP	OT	414	6	1775	9	1835	182	PHILLIPS J	WE	1320	16	1624	9 1703
108	MULLAN AB	CI	461		1773		unr	183	JACKSON RK	AC	733		1622	1547
109	POW K	AS	793		1772		1735*	184	PORTER J	HP	1978		unr	8 1618*
110	TAKANO M	GA	1898		1769*		unr	185	MACLEOD C	?	1933		unr	1617*
111	BOYD DJ	NS	700		1764	12	1877	186	DRAKE AS	UH	227	8	1616	unr
112	CRAIG R	HH	1507		1763		1896*	187	FROST E	WE	180	36	1615	21 1562
113	COATES S	CA	1359	17	1761		1701	188	EAST S	PT	1103		1613	1821
114	FRANKEL Z	WE	194	31	1761	19	1783	189	ABURN S	WE	644		1609	1714
115	LEZARD G	WE	727		1761		1719	190	PATEL D	WT	1516	5	1609	unr
116	EDMONDS M	CA	1365		1758		1524	191	SIMPERINGHAM E					
117	GRAINGER S	WE	1080		1758	9	1719			AC	1693	9	1609	1580*
118	VECOVSKY MP	OT	1092		1755	21	1551	192	BONALLACK D	?	1438		unr	1608
119	GLOVER R	PE	1200	16	1753		1809	193	TIDEY SB	WT	1656	12	1607	8 1615
120	HILL M	CI	1426	17	1747		1579	194	FOORD MRR	OT	55	8	1605	12 1656
121	PASECHNIC D	OT	1806		unr		1747*	195	DAVIS JM	GA	1302		1603	1658
122	METGE KM	PT	309		1746		1826	196	O'CONNOR JA	WT	527	12	1601	unr
123	PESTOV V	?	1977		unr	9	1745*	197	EASTERLOW NL	WT	1148	18	1599	1422
124	MACKWAY-JONES	RA						198	BURRIDGE D	CA	423		1593	unr
		IN	1068	6	1737		1438*	199	ROSSITER PE	HA	1367	5	1589	unr
125	PEDRESCHI M	CI	1546		1736		1711	200	DULOVIC R	?	1960	11	1588*	9 1741*
126	BANKS GB	PT	659		1735	8	1835	201	PRICE S	HP	1119		1586	8 1526
127	BOSWELL W	WA	670		1733		1557*	202	MCCAUGHAN DJ	OT	1216		1585	3 1602
128	BELL CM	UH	242	9	1731		1654	203	HENDERSON M	AC	1953	8	1580*	unr
129	HARE T	GA	1929		unr	12	1730	204	OKEY KM	NP	48		1574	15 1528
130	BEESLEY RA	AC	633	14	1725		1674	205	REEDER B	HH	1449		1572	1749*
131	REID AV	NA	562		1722	6	1726	206	BISHOP RF	GA	1175		1571	1622
132	CATER JE	WT	117	5	1719		1697	207	WIN J	?	1817		unr	1570*
133	NAFATALI N	OT	2020		unr	4	1717*	208	LUKETINA I	UH	925		1568	1712*
	VAN ROOY AJ	PT	1900		1717*		1691*	209	MAZUR JJ	CI	103	29	1567	9 1510
135	OLMEDO R	UH	1281		1713*		1462*	210	MORROW D	WT	883		1566	unr
136	FUATAI F	PT	1231	11	1709		1521	211	ONG W	HP	1478	6	1566	1262
137	NIJMAN AJ	CA	72	11	1707		1712	212	CRAWFORD R	WT	1720		1564*	unr
138	SMITH VJ	WT	345	18	1707	8	1691*	213	NUVAL N	?	1685		1563	1543*
139	ALDRIDGE AL	CI	412	6	1706	12	1683	214	WYLIE MW	IN	1265		1563	1538
140	MATHIESON JS	NS	71	11	1701	12	1578	215	FORSTER W	CI	927		1562	unr
141	RAYNER EP	OT	973	2	1697	10	1790*	216	HALLOWAY J	PE	1792		1561*	unr
142	MACLEOD S	CI	1931	13	1696	12	1721	217	ASLAM N	NS	1975		unr	5 1559*
143	PRICE AJ	UH	286	10	1696		1629	218	BELL DI	WA	168		1558	1565
144	WIN Z	?	1659		unr		1694*	219	STARR R	HP	1771		unr	8 1558
145	HOWARD MI	NS	258		1692	6	1378*		STORCHNEGGER O					
146	LACUNZA A	KP	1128	6	1689		1652	221	DUFFIELD T	WT	1683		1558	unr
147	MISTRY P	NS	1467	10	1689		6 1810	222	LIM D	OT	1173	13	1556	19 1489
148	LAMBOURNE GJ	OT	903	3	1684	14	1691	223	NYBERG M	WE	1451	34	1555	28 1663
149	MCDONALD P	AC	1740	5	1682		unr	224	BYFORD CS	CI	439	6	1551	9 1831
150	STRACY DM	CI	64	21	1681		1698	225	MERWART Z	AC	1944		1550*	unr
151	HUDSON S	CA	1176		1680		1637*	226	CAPPER DS	WE	243	7	1549	6 1634
152	RUSSELL T	CA	1360	11	1672		1711*	227	WALKER G	PE	1522		1548	1418*
153	TAUPAKI A	?	1575		1670		1648*	228	WHIBLEY J	KP	1131	6	1548	6 1473
154	STOREY DJH	PT	1285		1668		1698	229	CHANDLER K	AC	1991	9	1546*	unr
155	DE JONGE H	HP	1855		unr		1666*	230	BURNHAM DS	WA	575		1543	unr
	HOLLOWAY J	?	1446		unr		1666*	231	KING PC	CI	268	17	1543	6 1657
157	HALL S	WA	1707		1665		1667	232	TRUNDLE GE	GA	45		1539	1428
158	BARROW G	WE	595		1662		1552	233	MCNABB M	CA	987	11	1538	1558
159	PLACKIC T	UH	1859	21	1661		1527	234	PALMER BP	WT	1141	20	1537	unr
160	EDWARDS RE	CI	618	12	1657		1602*	235	PHILLIPS R	PT	1371		1537	1659
161	MCPHERSON A	CI	1385		1657		1654*	236	TAYLOR S	AS	1155		1537	1412*
162	ERIKSEN JE	WE	1807		unr		unr	237	STEWART MI	WT	367	5	1535	unr
	VAN DAM SML	AC	43		1654		unr	238	TURNER G	?	1911		unr	1533*
164	GILES BJ	NS	1469	9	1652	14	1677	239	BENNETT RH	WT	965		1530	1513
165	HOSKYN GA	WA	79		1648		1570*	240	BENSON C	CA	1087		1530	unr
166	LUSHKOTT V	KP	1420		unr		1646	241	GARMONSWAY T	WE	1748		1530*	unr
167	ADAMS JM	CA	126		1644		1502*	242	BATCHELOR A	OT	1580		1529	1719
168	WONG KA	PE	1261	16	1640	12	1674	243	JOHNS DP	NS	1234	11	1525	1516
169	FRASER C	CA	1361	6	1638		1842*	244	HAMPTON R	PT	375		1524	1482
170	GUY M	CA	1328		1637		unr	245	KAY JB	CI	56	17	1524	1398
171	MCLEOD S	HA	1963	5	1635*		unr	246	PATTINSON N	PT	1267		1523	1472
172	BOOTH AJ	HP	259		1632	8	1553	247	DOLEJS D	NE	351	6	1522	6 1769
173	SHAW G	OT	1221		1632		1608	248	MILLAR B	GA	1344		1519*	6 1608*
174	EMETT BG	NS	855	11	1631	12	1693	249	BOJTOR J	HP	302		1518	8 1598
175	REWETI M	UH	1353	8	1630		1468							
250	DAWES G	?	1964	10	1515									
251	RICHARDSON NJ	AS	1158		1515									
252	WONG C	?	1574		1515									
253	THORPE G	?	1961	12	1515									
254	GOLD HR	OT	798	24	1515									
255	MILNE DJO	NS	862		1515									
256	GENC U	AC	1380		9 1515									
257	HIMONA PJ	CI	1252		6 1515									
258	DUNN A	PT	1393		5 1515									
259	OLSON J	?	1808		1515									
260	JONES LR	KP	679		6 1515									
261	HEPERI DJN	OT	1004		5 1515									
262	WILSON J	WA	1661		1515									
263	WILSON C	HP	962		1515									
264	GIBB JL	OT	551		1515									
265	GRUBB IR	WE	1616		1515									
266	DALE CL	NS	1468		1515									
267	EVANS T	NS	1754	10	1515									
268	YOUNG P	AC	612		9 1515									
269	GLOISTEIN B	CA	54		14 1515									
270	PAINO RR	CI	1111		14 1515									
271	GARRATT T	NA	1621		14 1515									
272	WORN J	PT	975		14 1515									
273	FARRINGTON LB	WE	1164	34	14 1515									
274	DIXON HA	CI	119		8 14 1515									
275	CAMERON I	PT	1394		14 1515									
276	WALLIS P	PT	1104		14 1515									
277	CUNNINGHAM PD	UH	323		14 1515									
278	EAGLE S	CA	1919		14 1515									
279	SCARF R	AS	1097		5 14 1515									
280	WILLIAMS K	HP	1472		14 1515									
281	BOAG P	CA	1095		6 14 1515									
282	WOOD C	AS	1227		14 1515									
283	SOUTHGATE B	CI	929	10	14 1515									
284	STARR A	HP	1763		14 1515									
285	KIMBERLEY M	HP	1854		14 1515									
286	ALLSOBROOK AJR	UH	283		8 14 1515									
287	REID A	UH	926		9 14 1515									
288	URN MR	GA	1466		9 14 1515									
2														

unr	250	DAWES G	?	1964	10	1518*	unr	325	SADLER M	CA	1160	6	1402	unr
unr	251	RICHARDSON NJ	AS	1158		1517	1627*	326	ANTONY M	GA	1765		1397	unr
6	1537	252	WONG C	?	1574	1516*	1869*	327	BANNISTER C	OT	895		1396	4 1154
unr	253	THORPE G	?	1961	12	1514*	unr	328	JORDAN PJ	CA	1177		1395	9 1462
1627*	254	GOLD HR	OT	798	24	1510	31 1669	329	EVANS T	NS	1818		unr	1393*
6	1799	255	MILNE DJD	NS	862	1508	1495		VAN ZOOMEREN J					
9	1703	256	GENC U	AC	1380	9 1507	unr	331	PAU KS	OT	901	6	1393	19 1450
unr	1547	257	HIMONA PJ	CI	1252	6 1507	unr	332	JONES A	AC	1518	21	1388	5 1310*
8	1618*	258	DUNN A	PT	1393	5 1505	1556	333	BALDWIN P	NS	322	8	1387	unr
1617*	259	OLSON J	?	1808		unr	1505*	334	POCOCK G W	GA	1709		1386	1287
unr	260	JONES LR	KP	679	6 1501	1391*	unr	335	STEWART J	WA	1508		1382	1465
21	1562	261	HEPERI DJN	OT	1004	5 1500	14 1697	336	RENNIE H	?	1612	4	1381*	1313*
1821	262	WILSON J	WA	1661		1499	unr	337	RAMSAY B	CI	59 22		1377	1418
1714	263	WILSON C	HP	962		1494	8 1604	338	GIDMAN E	NS	1767		1376*	12 1486
unr	264	GIBB JL	OT	551		1493	1 1419	339	KELLY S	CA	651	6	1376	unr
1580*	265	GRUBB IR	WE	1616	1	1493	1501	340	WHITAKER B	AC	1011	6	1372	1433
1608	266	DALE CL	NS	1468		1491	1438	341	GILMARTIN J	CI	1409	13	1370	1224
1615	267	EVANS T	NS	1754	10	1490	12 1513	342	WADDINGTON SE	GA	1687		1370	1518*
1656	268	YOUNG P	AC	612	9	1490	unr	343	SHEEHAN R	HH	1497	6	1369	1500
1658	269	GLOISTEIN B	CA	54		1488	4 1472	344	ANSELL D	PT	1395		1368	1311
unr	270	PAINO RR	CI	1111		1488	1454	345	GARLAND M	WT	354		1368	unr
1422	271	GARRATT T	NA	1621		unr	6 1487*	346	PATSTON G	CA	1180	6	1362	1332
unr	272	WORN J	PT	975		1486	1760	347	SCHURR R	KP	1009		1361	1439*
unr	273	FARRINGTON LB	WE	1164	34	1483	16 1526	348	STONE RG	OT	902	10	1360	1355*
unr	274	DIXON HA	CI	119	8	1482	1291*	349	TIPENE B	CA	2011	6	1360*	18 1328
9	1741*	275	CAMERON I	PT	1394	1480	unr	350	PUTT G	IN	1747		1358	unr
8	1526	276	WALLIS P	PT	1104	1479	1546	351	PRESTON JN	IN	107		1357	unr
3	1602	277	CUNNINGHAM PD	UH	323	1478	1547	352	SCHULTZ AE	WE	818		1356	893*
unr	1528	278	EAGLE S	CA	1919	1476*	unr	353	SHARDY Z	CI	233	10	1356	1398
5	1749*	279	SCARF R	AS	1097	5 1472	1515*	354	HIPKINS B	AC	320	8	1355	1372*
1622	280	WILLIAMS K	HP	1472		unr	8 1471	355	POLLARD B	WT	1723	12	1353	unr
1570*	281	BOAG P	CA	1095	6	1466	1510	356	SULLIVAN GE	NS	1206	11	1353	unr
1712*	282	WOOD C	AS	1227		1465	1431*	357	WHITEHOUSE A	NS	1677	8	1353	1468
9	1510	283	SOUTHGATE B	CI	929	10 1459	6 1359	358	FROST J	AC	1996	9	1352*	unr
unr	284	STARR A	HP	1763		unr	8 1455	359	SATCAU ACC	AC	1952		1351*	unr
1262	285	KIMBERLEY M	HP	1854		unr	1452*	360	WILSON A	WA	1660		1351	unr
unr	286	ALLSOBROOK AJR	UH	283	8	1450	1557	361	SHIELDS JA	WT	531	18	1350	unr
1543*	287	REID A	UH	926	9	1449	unr	362	BELL G	?	1602		1348	1443
1538	288	BURN MR	GA	1466		1447	9 1488	363	DELLACA B	GA	1650		1348	1569*
unr	289	URBANSKI Z	AS	1938		unr	1447*	364	SAJAK G	HP	1851		unr	1348*
unr	290	MEARS GW	NS	92	11	1445	6 1493	365	GLOVER B	AC	1537	8	1347	unr
5	1559*	291	BROUGHTON J	HA	944	5 1444	1379	366	MCGURK A	IN	1071		1347	1299*
1565	292	NICOLL A	HP	1852		unr	1444*	367	KARA D	HA	1356	5	1346	9 1563*
8	1558	293	AZNAR E	WE	1861	1443*	unr	368	BURROWS GL	AC	1576	9	1345*	unr
unr	294	SYKES J	WT	1682		1442	1369	369	LE BROCK MJ	NS	1586	8	1345	1242
1489	295	KERRY J	WT	1826	12	1439	unr	370	NEAL RM	?	888	5	1345	1439*
1584*	296	VAN BODEGRAVEN T	GA	909	11	1437	1455	371	NORRIS T	CA	1778	11	1344	1421*
8	1663	297	ONG J	HP	1476	6 1435	1379	372	DUNCAN M	AS	1936		unr	1343*
9	1831	298	SARFAS E	CI	1319	20 1435	21 1406	374	JOYCE C	PT	1697		1343	1329*
unr	299	STIMPSON J	PT	1100		1435	1533*	375	STEWART BK	ZZ	349		1342	1378
6	1634	300	TANGI TJJ	AC	1210	7 1433	1342*		BONALLACK J	?	1422		unr	1339
1418*	301	GORDON MA	WE	639	12	1431	1435*		EDWARDS J	?	1415		unr	1339
6	1473	302	MICHAEL A	PT	1567	1430	1445		MACDONALD JR	AS	1088		1339	1526
unr	303	RYAN F	OT	1531	9	1429	17 1389	378	COLLINS L	PT	988		1338	unr
unr	304	GILHOOLY B	?	1330		1427	1313*	379	GOECKEL H	GA	1614	10	1338	unr
6	1657	305	STEPHENS TC	CA	948	11 1427	unr	380	REID DM	OT	1182	3	1338	10 1288
1428	306	LEGGETT B	KP	1967	7	1424*	unr	381	NICHOLSON B	WA	922		1337	unr
1558	307	HOLDAWAY S	GA	1924		unr	5 1422*	382	MCLEAN G	IN	1511		1334	1050*
unr	308	GILMOUR M	WT	1678	6	1420	unr	383	LAKE A	CA	1579		1332	unr
1659	309	HOOTON BR	PT	1147		1420	1457	384	ANDRIOLIC F	PE	1275		1331	1507
1412*	310	POWELL T	?	1982		unr	5 1418*	385	TSEUNG JCO	AC	1695	6	1325	1375
unr	311	KOIA A	PE	1136	11	1417	1546	386	BUNCE C	IN	1067		1322	unr
1533*	312	BEECH J	AS	1937		unr	1416*	387	BEVIN M	OT	1561		1321	4 1374
1513	313	BARLOW A	WE	1753	32	1415	14 1470	388	ANDERSON G	CI	334		1320	unr
unr	314	BERKELEY R	OT	1488	2	1415	1 1409	389	MARTIN O	?	1666		1320*	1442
unr	315	VINCENT DA	AC	1414		1414	1482	390	HALL C	CA	1966	11	1319*	unr
1719	316	REID I	PT	1102		1413	1435*	391	BENNETT ST	AS	1156	5	1315	1179*
1516	317	CRUTCHER A	NS	1764		1412*	unr	392	PARLANE LN	GA	144	6	1315	unr
1482	318	NEWMAN K	WT	1797		1412*	unr	393	ROSIE E	CA	1046		1314	unr
1398	319	VAN ROSSUM P	IN	1899		1412*	unr	394	SPENCER-SMITH	PA				
1472	320	ASHE M	AC	802	7	1409	1371*			NS	357		1314	1481
1769	321	GOUDIE D	WT	1796	6	1409	unr	395	PAKENHAM J	AC	1903		1313*	1769*
1608*	322	PYNE T	IN	1069		1409	1170*	396	BEHARIC E	PE	1665		1312	1474*
1598	323	MORRISON MK	AC	74	30	1405	15 1412	397	MACFARLANE A	WT	1886	13	1311	unr
	324	WILLIAMS V	?	1347		1403	1635*	398	WALKER CA	WT	708	19	1310	1334
								399	CLARK C	?	1766	5	1308	9 1515*

400	RICHARDSON A	AS	1920	unr	1307*	475	RAWNSLEY DC	HP	250	1198	6	1339	550	MOORE J	WE	1751	23	1	
	SHERRIFF LJ	?	1809	unr	1307*	476	BACKHOUSE C	UH	1354	1197		1273	551	KWANG B	WE	1839			
402	WOOD P	AC	1957	8	1306*	477	NEWMAN B	UH	187	8	1197	1431*	552	SWEETSUR P	GA	1889			
403	JACKSON A	CI	1973	8	1305*	478	PATERSON S	?	1233		1197*	unr	553	LAUGHLAND A	PT	1698			
404	MARTIN SC	WT	305		1305	479	JEFFS D	KP	1632	7	1196*	1441*	554	SIMS L	?	1553			
405	HENRY R	WE	1358	2	1304	480	MORSE D	HA	1515		1194*	1589*	555	ELVY D	CI	1860			
406	WONG J	?	1856	unr	1304*	481	AZULAY J	AC	1995	8	1193*	unr	556	PERRY M	AC	1787			
407	GOSNELL ME	KP	1457	7	1301*	482	MCRAE JH	PT	532		1191	1278	557	WEBBER CH	UH	267			
408	GUERIN GB	CA	738		1299	483	CLARK BK	PE	1498		1188	1358	558	MORGAN C	?	1925			
409	VOSS PJ	GA	1601	10	1299	484	LUI E	HA	1259		1186	1258*		PALMER D	CA	1862			
410	HARNETT PM	CI	1383	13	1298	485	VAN DER MEY PF						560	ROUGHTON E	KP	1530			
411	BOROVSKIS J	HP	387		1296			NS	431	1186	11	1494	561	HOLLANDER D	CA	1781			
412	AUSTIN KR	NP	870		1295			NS	304	8	1182	12	1465	562	BOEKHOLT E	UH	1308		
413	STREET S	WA	1406		1293			WT	1721		1181		unr	563	ALLAN J	GA	1915		
414	KINGSTON ZH	KP	1357	17	1289	486	GREVERS LP	NS	304	8	1182	12	1465	564	MCGOWAN A	KP	1527	7	1
415	GONIN RCE	OT	452	5	1288	487	ENGELAAR J	WT	1721		1181		unr	565	STAPLES B	HP	1563		
416	PILLSBURY A	AC	1053	7	1288	488	CATER A	WT	1314		1178		1268	566	COOK E	CA	1782	6	1
417	HEALEY R	KP	332	16	1285	489	GOGULSKI P	WE	1752		1174*		1289*	567	GODFREY P	WT	1885	6	1
418	NORMAN C	HP	1566		1285	490	HALL D	NS	1339	8	1173		unr	568	WAI J	HP	1770		
419	GILLESPIE JG	CI	974	23	1284	491	COLLINGWOOD V	WT	1895	17	1172		unr	569	DALMAN T	CA	2010	6	1
420	TAYLOR DC	PT	1503		1284	492	ANDERSON W	HA	1663		1170		unr	571	ITAMA S	PT	1837		
421	POW SW	OT	1935	2	1283*	493	GREENWOOD C	PE	1625		1169		1214*	572	HOWARD AJ	GA	1615		
422	EVERITT TH	OT	1219		1281	494	TAYLOR C	WE	1897	14	1167		unr	573	KU J	NS	1824		
	HANHAM S	AC	1958	3	1281*	495	WALKER M	PE	1525		1167		1333*	574	HAY V	OT	198		
424	HUGGINS J	AC	1997	9	1281*	496	DILBAGH S	WA	1947		1166*		unr	575	SMITH A	IN	1294		
425	OTENE EA	AC	816	50	1281	497	DIMOCK A	CA	1644		1166		1116*	576	MUNNS M	WT	1731	18	1
426	FISCHER F	IN	1343		1278	498	HURRING P	KP	1908		unr	6	1166*	577	HOMBOY L	?	1441		
427	WINSOR BM	NS	365	11	1272	499	WARD CL	WA	582		1162		unr	578	HARRIS P	OT	1493	5	1
428	AIDAN A	AC	1031	8	1266	500	RAPPANGE F	PT	1804		1161*		1270*	579	SAKOCZY G	RO	1170		
429	SHIELDS P	WT	587		1263	501	HUELIN R	NP	1705		unr		1159*	580	BROWNE E	CA	1783		
430	CROSLAND GW	WT	898		1262	502	JONES GM	NS	312	8	1159	6	1312	581	FISTONICH ACC	AC	1955		
431	JADALLAH I	OT	1922	2	1260*	503	JURY B	PE	1629		1157		1362	582	NEILSON S	HA	1247		
432	LAW T	?	1866		1258*	504	MCGOWAN J	CA	1779		1157*		unr	583	ALLPRESS K	WT	1519	14	1
433	ROWELL T	OT	1590	10	1258	505	MILLS G	KP	788	17	1157		1276	584	JEWITT S	CA	2009	6	1
434	IRONS B	UH	1429		1256*	506	SOH M	GA	1869		1157*		unr	585	MUDGE A	?	1777		
435	SUTTON B	HH	1387		1256	507	BARR P	WE	1756		unr		1156*	586	CHOW C	WE	1801		
436	BELL A	PT	1645		1255	508	WALLS C	?	1701		1155*		1201*		SIMPSON DJW	NS	1844	8	1
437	STEVENTON A	WE	2012	5	1252*	509	POCOCK R	GA	1606		1152*		1293	588	COLLINGWOOD G	WT	1827	18	1
438	SCHERER K	AC	1994	7	1251*	510	SAVAGE P	WE	1833	15	1151	26	1212	589	COSTA J	CA	1948		
439	VAN DER HORST	H			unr	511	CHAN W	?	1902		1149*		unr	590	JARDINE C	AC	1680	9	
		CA	1712		1251	512	GIBSON M	AC	1871	8	1149		unr	591	MISA A	AC	1041		
440	WAGSTAFF GC	NS	854	8	1251	513	MCCARTHY PD	PT	621		1149		1322	592	ROSNER A	WT	1832		
441	COURTNEY H	GA	1054	6	1249	514	CRAWFORD R	NP	1558		unr	5	1146*	593	RAMACHANDRAN M		1884		
442	FORSYTH E	IN	1295		1249	516	FRASER K	OT	1791	1	1146*	2	1306*	594	CHUNG J	AS	1940		
443	FORREST K	WA	1450		1247	517	VAN DER BURG G	KT	1543	7	1141		1325*	595	COLEMAN G	PT	1274		
444	BOWLER RP	NP	288		1246			WT	1894		1140*		unr	596	GUTHREY ACC	AC	1954		
445	LANG M	IN	1564		1243	518	BENT A	?	1949		unr		1139*	597	MCCANDLESS A	OT	1769		
446	ATKINSON J	CA	1327	6	1242	519	LEAF C	?	1528	1	1131*		801*	598	STOREY J	PT	1407		
447	CHOW R	WE	1803		unr	520	WANG L	?	1528	1	1131*		1296	599	SANSOM I	WE	1802		
448	BISHOP J	?	1810		unr	521	CAMERON D	OT	134		1128		1296	600	HURRING C	KP	1909		
449	FRENCH W	?	1870		unr	522	BOYD M	OT	1408		1127	2	1094*	601	VINJIMOORE A	WE	1800		
450	GRIFFITHS T	OT	1914	5	1236*	523	CHILVERS M	HP	1481		1126*	6	1120	602	ARNOLD R	WT	1727		
451	KEELING RL	AS	1096	5	1231	524	MATOE W	WT	1986	10	1122*		unr	603	YEATS ACC	AC	1956		
452	ANNAN DJ	NS	1378		1230	525	PORTER A	PT	1702		1122		1227*	604	ANTONCHICH M	WE	1834		
453	MUNROE DR	NS	1905	8	1230*	526	FORSTER B	?	1822		unr		1120*	605	AHRENS W	NS	1843		
454	TURNER P	PT	1270		1230	527	MAC J	CA	1780	5	1119		1266*	606	GALES AE	NS	693		
455	MUKHEDKAR S	WE	1969	4	1228*	528	BLACKLOCK J	NS	1439		1118		unr	607	CHOU P	NS	1845		
456	SULLIVAN GJ	UH	772	17	1227	529	PFISTER R	?	1881		1113*		unr	608	KIMPTON S	?	1883		
457	IVANCIC S	PE	1491		1226	530	CARTER A	PT	1805		unr		1112*	609	JURY A	NP	1551		
458	SHEEHAN T	HH	1500	6	1226		JACK C	UH	1814		unr		1112*	610	GRACE B	PE	1891		
459	BELL M	PT	1646		1224	532	BANKS L	?	1823		unr		1111*	611	HERRING M	?	1873		
460	CARTER M	GA	1368		1223	533	KARNN B	?	1962	10	1110*		unr	612	PHILLIPS D	GA	1620		
461	COOK J	WE	1651	25	1223	534	GEMMELL J	IN	1794		1106*		1262*	613	FROST P	OT	1184		
462	QUINN KT	PE	1624		1223	535	JACK A	CI	1971	10	1105*		unr	614	NATHAN B	PT	1773		
463	VAN DEN BOSCH	K			unr	536	SHEEHAN SB	HH	1736	6	1105		1213*	615	DEN HEIJER N	HP	1979		
		HP	1668		1223	537	VARGA S	HP	1980		unr	8	1105*	616	DALMAN M	?	1983		
464	JUDKINS G	GA	1742		1222*	538	GILMER J	?	1820		unr		1101*	617	MCPHERSON A	WE	1746		
465	RITCHIE A	OT	1786	6	1221	539	CHEW RT	WE	1594	7	1098	10	1329	618	YORSTON K	WA	1598		
466	VAN GERVEN CJ	GA	1448		1221	540	PAGE A	AC	1690		1096		unr	619	RENNIE T	WE	1502	5	
467	BRESKA E	AC	806		1215	541	ARANUI G	CA	1640	6	1094		1324*	620	LUN B	?	1819		
468	GORDON R	HH	1169		1213	542	CAMPBELL S	AS	1941		unr		1094*	621	EDWARDS C	PT	1774		
469	FULLER R	PT	999		1212	543	BURNS G	KP	1541	7	1093	5	1265	622	COX WR	KP	1456	7	
470	CHILVERS C	HP	1480		1209*	544	ZIMMERMANN U	?	1815		unr		1092*	623	JOHNSON J	GA	1835	5	
471	LAWSON S	WT	1345		1209	545	PATTON AJ	OT	905		1091		1292	624	BECKMANN P	AC	1588		
472	WEBER F	WT	1959	14	1203	546	BJELOBRK I	?	1872		1090*		unr	625	MOAR K	WE	1745		
473	MADDREN A	WA	1789		1202	547	HARTIGAN C	WT	1798	16	1088		unr	626	WILHELM P	IN	1795		
474	KESSELER B	WT	1718	18	1198	548	TE KANI S	?	1768	5	1083		1108*						
					unr	549	BAXTER I	?	1901		1082*		unr						

6	1339	550 MOORE J	WE	1751	23	1081	14	1345	627 O'MALLEY S	WE	1501	915	788
	1273	551 KWANG B	WE	1839		unr		1079	628 MITCHELL T	WA	1946	913*	unr
	1431*	552 SWEETSUR P	GA	1889		1078*		unr	629 GILLARD S	?	1811	unr	911*
	unr	553 LAUGHLAND A	PT	1698		1064		1284	OSBORNE K	?	1555	unr	911*
	1441*	554 SIMS L	?	1553		unr		1064	631 HUMPHREY J	GA	1812	unr	906*
	1589*	555 ELVY D	CI	1860		1061*		unr	632 BURTON T	OT	1533	905*	unr
	unr	556 PERRY M	AC	1787		1059*		unr	633 GALLETLY D	OT	1918	899*	4 1242
	1278	557 WEBBER CH	UH	267		1056		1200	634 SWEETSUR M	GA	1904	885*	unr
	1338	558 MORGAN C	?	1925		unr		1053*	635 WHITE PS	?	1609	881*	1517
	1258*	PALMER D	CA	1862		1053		1199*	636 RAMACHANDRAN S	?	1867	880*	unr
		560 ROUGHTON E	KP	1530		1052*		1397*	637 STEVENSON M	CA	1776	11 880	1068
11	1494	561 HOLLANDER D	CA	1781		1051*		unr	638 KARNN R	?	1965	10 877*	unr
12	1465	562 BOEKHOLT E	UH	1308		1050		1082	639 MCLEAN D	WE	1744	876*	931
	unr	563 ALLAN J	GA	1915		unr	5	1049	640 LAW P	?	1880	875*	unr
	1268	564 MCGOWAN A	KP	1527	7	1048	6	1365	641 WILLSON W	?	1868	874*	unr
	1289*	565 STAPLES B	HP	1563		unr	8	1048	642 RENNIE L	?	1447	unr	873*
	unr	566 COOK E	AC	1782	6	1047		1208*	643 VAN STRATEN D	NS	1607	871	1072
	unr	567 GODFREY P	WT	1875	6	1044*		unr	644 TU J	?	1228	867*	1202*
	unr	568 WAI J	HP	1770		1043*	8	884*	645 WRATT A	?	1927	unr	4 863*
	1214*	569 DALMAN T	?	1926		unr		1042*	646 DALMAN P	?	1930	unr	4 862*
	unr	STEWART A	CA	2010	6	1042*		unr	647 TUATINI M	GA	1934	unr	861*
	1333*	571 ITAMA S	PT	1837		1041*		unr	648 MCCARTHY O	PT	1793	unr	1013*
	unr	572 HOWARD AJ	GA	1615		1040		1160	649 LI WH	?	1821	unr	826*
	1116*	573 KU J	NS	1824		1039*		1061*	650 ROUNTHWAITE T	WT	1896	17 823	unr
6	1166*	574 HAY V	OT	198		1036		924	651 AH-CHEE ML	?	1865	822*	unr
	unr	575 SMITH A	IN	1294		1033		unr	652 CROOKSTON J	CI	1974	13 815*	unr
	1270*	576 MUNNS M	WT	1731	18	1024		unr	653 KRAULIZ P	WA	1790	810	unr
	1159*	577 HOMBOY L	?	1441		1022*		unr	654 WILKINS JC	NS	1755	803	1046
6	1312	578 HARRIS P	OT	1493	5	1019	9	1162	655 YANG J	?	1879	799*	unr
	1362	579 RAKOCZY G	RO	1170		1019		unr	656 O'CALLAGHAN J	?	1857	unr	794*
	unr	580 BROWNE E	CA	1783		1015		unr	657 KLARWILL N	CA	1864	788*	unr
	1276	581 FISTONICH ACC	AC	1955		1013*		unr	658 O'CONNOR S	WT	1828	17 787	unr
	unr	582 NEILSON S	HA	1247		1013		unr	659 HERATH S	WE	2002	unr	9 782*
	1156*	583 ALLPRESS K	WT	1519	14	1010		unr	660 POW J	AS	1939	unr	774*
	1201*	584 JEWITT S	CA	2009	6	1008*		unr	661 MURASHEV A	?	1813	unr	767*
	1293	585 MUDGE A	?	1777		1008*		unr	662 STALLINGER R	CI	1972	8 766*	unr
26	1212	586 CHOW C	WE	1801		unr	10	1003	663 BALE H	KP	1910	unr	757*
	unr	SIMPSON DJW	NS	1844	8	1003*	5	1153	664 COWDEN M	NS	1917	unr	751*
	unr	588 COLLINGWOOD G	WT	1827	18	1002		unr	665 WEERASURIYA D	WE	1999	unr	9 743*
	1322	589 COSTA J	CA	1948		999*		unr	666 STRID B	?	1882	733*	unr
5	1146*	590 JARDINE C	AC	1680	9	999		unr	667 CHEESEMAN A	WE	1842	unr	720*
2	1306*	591 MISA A	AC	1041		998		983	668 COX C	OT	1921	715*	1033*
	1289*	592 ROSNER A	WT	1832		995*		unr	669 SHEEHAN S	HH	1655	6 715	1131*
		593 RAMACHANDRAN M		1884		993*		unr	670 HERATH C	WE	2005	unr	7 707*
	1325*	594 CHUNG J	AS	1940		unr		991*	671 MACKINTOSH	WE	1225	703	unr
	unr	595 COLEMAN G	PT	1274		990		1163*	672 HOWELL R	HH	1849	701*	unr
	1139*	596 GUTHREY ACC	AC	1954		990*		unr	673 IANOVSKI I	?	1874	701*	unr
	801*	597 MCCANDLESS A	OT	1769		987		unr	674 RAI N	?	1875	700*	unr
	1296	598 STOREY J	PT	1407		985*		unr	675 MORRIS E	NS	1853	698*	1078*
	1094*	599 SANSOM I	WE	1802		unr	10	984	676 LAIDLAW J	WE	1847	unr	4 697*
6	1120	600 HERRING C	KP	1909		unr	6	981*	677 WEERASURIYA S	WE	2001	unr	9 692*
	unr	601 VINJIMOORE A	WE	1800		unr	9	979	678 MORRIS C	NS	1850	669*	751*
	1227*	602 ARNOLD R	WT	1727	17	977		unr	679 WIJESINGHE S	WE	2004	unr	8 669*
	1120*	603 YEATS ACC	AC	1956		976*		unr	680 REID H	CA	1784	657	unr
	1266*	604 ANTONCHICH M	WE	1834		unr		973*	681 BALL D	WE	1838	unr	656*
	unr	605 AHRENS W	NS	1843		unr		972*	682 BAUER K	WE	1799	1 646*	10 1136
	unr	606 GALES AE	NS	693		970	11	1154	683 COLLEN T	WE	2014	unr	6 645*
	1112*	607 CHOU P	NS	1845		unr		969*	684 MCHUGH D	WE	2000	unr	7 643*
	1112*	608 KIMPTON S	?	1883		968*		unr	685 SINCLAIR F	WE	1757	unr	627
	1111*	609 JURY A	NP	1551		964*		917*	686 TROTMAN D	?	1981	unr	4 618*
	unr	610 GRACE B	PE	1891		962*		1037*	687 AUTHIER A	WT	1728	17 614	unr
	1262*	611 HERRING M	?	1873		962*		unr	688 HUGHES S	OT	1534	613*	unr
	unr	612 PHILLIPS D	GA	1620		962		1219	689 CLEARWATER S	?	1878	611*	unr
	1213*	613 FROST P	OT	1184		958*	8	1417*	690 SIMPSON J	?	1928	unr	605*
8	1105*	614 NATHAN B	PT	1773		953*		unr	691 HIRANO S	?	1888	566*	unr
	1101*	615 DEN HEIJER N	HP	1979		unr	6	946*	692 CROOK D	WE	1840	unr	5 559
10	1329	616 DALMAN M	?	1983		unr	4	943*	693 JONES A	WT	1775	557*	unr
	unr	617 MCPHERSON A	WE	1746		unr		942*	694 FOOKSTOV D	WE	1906	unr	543*
	1324*	618 YORSTON K	WA	1598		940		unr	695 GALEA D	UH	1499	532*	1152*
	1094*	619 RENNIE T	WE	1502	5	938		1128	696 PALMER R	WT	1985	4 532*	unr
5	1265	620 LUN B	?	1819		unr		937*	697 MCHARDY G	?	1876	489*	unr
	1092*	621 EDWARDS C	PT	1774		933*		unr	698 GILLIES A	?	1877	456*	unr
	1292	622 COX WR	KP	1456	7	932*		1063	699 BAUER I	WE	1841	unr	5 446*
	unr	623 JOHNSON J	GA	1835	5	930*		1216*	700 GILLOOLY N	?	1887	300*	unr
	unr	624 BECKMANN P	AC	1588		926		1259*	701 HETTIGE D	WE	2006	unr	4 300*
	1108*	625 MOAR K	WE	1745		unr		921*	NAIK A	WE	2015	unr	5 300*
	unr	626 WILHELM P	IN	1795		917*		unr	RUPASINGHE L	WE	2013	unr	5 300*

## New Zealand news

Results supplied to NZCF for rating recently, and reports on club activity, show that several have moved recently. On completion of their studies, Peter McKenzie, Stephen Lukey and Paul Tuffery have moved from Christchurch to Wellington.

Geoffrey Gill has moved from Auckland to Whangarei and with Paul Bell has formed a club in the northern city. Its members include Peter van Dijk, who has transferred from Wellington, and Robert Wansink who has moved back from Dunedin.

Michael Schwass, formerly in Wellington, has taken up a post in Dunedin, where Mark Sinclair is also living at present.

Martin Sims, a prominent correspondence player, has moved from Rotorua to Palmerston North.

### North Shore

Leonard McLaren has won the second leg of the North Shore CC rapid championship with 5/6 (loss to Peter Stuart). Jim Mathieson, Naveed Aslam and Philip Hair scored 4½, ahead of Peter Stuart and Philip Hair on 4.

### Civic

Civic CC has moved from strength to strength this year, with an increase in playing membership of some 50 per cent. At present nearly 30 members are competing in five graded round robin groups. Russell Dive and Anthony Ker are competing for honours in the top group.

In the Summer Cup NM Richard Sutton gave the field a full point start, joining in round 2. In the last five rounds he scored 5/5 to win from Paul Dunn, Martin Hill and Scott McLeod on 4½, and Arthur Pomeroy, Alan Winfield and Colin Byford on 4.

The B grade Knockout Cup was won by Paul Dunn, who won a playoff with Martin Hill after they had drawn their final game. Bill Ramsay beat Zoltan Shardy to take the C grade.

### Canterbury

Geoff Davies has taken over as secretary of Canterbury CC from Pat Jordan, who is concentrating this year on coaching junior players. The other officers - president Mark Guy, vice-president Alistair Compton and treasurer Peter Boag - are unchanged. However, Mark Guy has a heavy workload this year as he has been appointed coach to the Canterbury Golf Association.

### Otago

The Otago Westpac Autumn rapid tournament attracted an improved entry of 22 players. Tony Dowden drew with Tony Love and David Guthrie to win with 5/6, ahead of Love, Guthrie and Dallin Heperi 4½; Hamish Gold 4; and Aaron Batchelor, Malcolm Foord and Ray Stone 3.

## 1997 N.Z. Masters tournament in Wanganui

Chess has been included again in the programme for the 1997 New Zealand Masters Games which will be held in Wanganui from February 1 to 9 next year, with National Mutual as the sponsors.

The Masters Games alternate each year between Wanganui and Dunedin, and this year was in the Otago programme with a minimum age of 35. There were 18 entrants and the joint winners were Tony Love and Tony Dowden.

The 1997 games will include no less than 55 different activities, and the Wanganui organisers are preparing for the number of participants to top 7000 for the first time.

Chess will be played on Saturday, February 8, with a minimum age of 35. Anyone interested in competing in chess or any of the other activities can write for the programme and entry forms to National Mutual NZ Masters Games, PO Box 500, Wanganui.

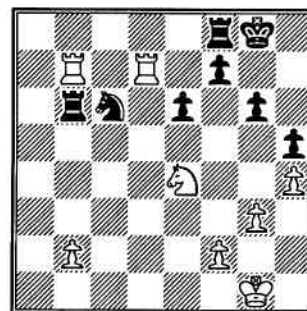
## Ben Martin plays interclub in Britain

FM Ben Martin is completing his studies in Britain, and has not played in individual tournaments recently. But he still plays for Wood Green in the elite nationwide Four Nations Chess League interclub tournament.

After four rounds Wood Green shared the lead, but in a roller-coaster ride in the next six rounds, they dropped back to fourth then recovered to third with three rounds to go. Midland Monarchs and Slough were first and second, with GM Murray Chandler's BCM team sixth.

When BCM narrowly beat Richmond, GM Jonathan Levitt at board two for BCM gave 12-year-old Luke McShane his second win against a GM from this position:

Levitt, J GM - McShane, L



Black to play

1...♖b8?? 2.♗f6+ 1-0

After 42...♗f8 43.♖xf7#, or 42...♗h8 43.♖xb6 ♖xb6 43.♖xf7 with ♖h7 to follow.

### New role for Deep Blue

IBM's Deep Blue, the chess computer programme that failed to beat Garry Kasparov, is proving its adaptability in a new role. It has been reported that Deep Blue is being used in a weather forecasting capacity for the Olympic Games in Atlanta. It will be keeping an eye on weather patterns and giving up-to-the minute reports to athletes and spectators.

In round 9 Wood Green trounced North-west Eagles. The following game was Ben Martin's contribution to the win.

Quillan, G - Martin, FM B

Notes by Ben Martin

1.e4 e6 2.d4 d5 3.♗d2 ♗f6 4.e5 ♗fd7 5.c3 e5 6.♗d3 ♗c6 7.♗e2 ♖b6 8.♗f3 cxd4 9.cxd4 f6 10.exf6 ♗xf6 11.0-0 ♗d6 12.♖e1 0-0 13.♗f4 ♗d7 14.♗e3 ♗e4

14.♖xb2 is a good alternative.

15.♗e5?!

My book on the French only gives 15.♗xe4 ♗xf4 and Black is very comfortable.

15...♗xe5 16.dxe5 ♗c5 17.♗xe4

17.♗xd5 also wins material.

17...♗xe3 18.♗xh7+

I had missed this on move 14, even though it is a standard tactic.

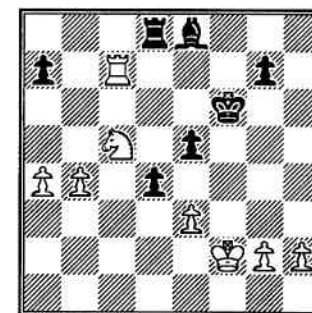
18...♗xh7 19.♖d3+ ♗g8 20.♖xe3 ♖xe3 21.fxex3 ♖f5?

21...♖ac8 is necessary.

22.♖ac1 ♖xe5 23.♖c7 ♗e8 24.♗d3 ♖f5 25.♖xb7 ♖f7 26.♖xf7 ♗xf7 27.♖c1 ♗b5 28.♖c7+ ♗f6 29.♗c5 e5 30.a4 ♗e8 31.b4+-d4

May as well push my passed ♖ before resigning.

32.♗f2 ♖d8



33.♖xa7?

A safe way to play it is 33.exd4 exd4 34.Ke2 to blockade the ♖. Now I have counterplay.



33...d3 34.♖e4+ ♕f5 35.♖d2 e4

I think Gary missed this.

36.♞e7 ♖c6! 37.b5 ♖d5 38.♖f1 ♞c8!

38...♞a8 is the safer option.

39.g4+ ♕f6!

Again, 39...♕xg4 is safer, but I now felt I had winning possibilities.

40.♞d7 ♞c2+ 41.♕g3 ♕e6 42.♞xg7

The dust has settled after the time control. Black now wins a piece...but can he stop all of those ♖s?

42...d2 43.♖xd2 ♞xd2 44.a5 ♞e2 45.♕f4 ♕f6 46.♞d7 ♞f2+ 47.♕g3 ♞f3+ 48.♕h4

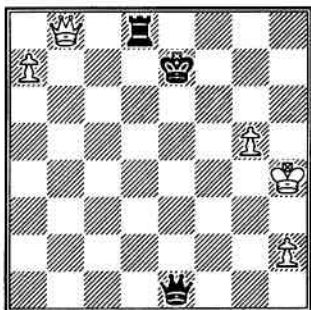
As we shall see, this is a bad square for the ♕.

48...♕e6 49.♞d8

49.♞h7 ♞xe3 50.b6 ♞b3 51.a6 e3 is also awkward for White.

49...♞xe3 50.g5 ♞d3 51.a6 ♕e7 52.♞b8

White must try 52.♞xd5 ♞xd5 53.a7 ♞d8 54.b6 e3 55.b7 [55.♕g3 ♞f8 doesn't help] 55...e2 56.b8=♞ e1=♞+.



Now you can amuse yourself by finding a sequence of checks leading to a win.

52...e3 53.♕g3 ♞d1 0-1

Black wins on time, but 54.♞b7+ ♕xb7 55.axb7 and now either 55...e2 53.b8=♞ e1=♞+ or simply 55.♞d8 both win for Black. This win helped Wood Green to win the match 7½-½! After the game I found out that Gary needed to win for an IM norm. I sympathised, having been in the same position more times than I care to remember, but what can you do when someone hands you swindling chances?

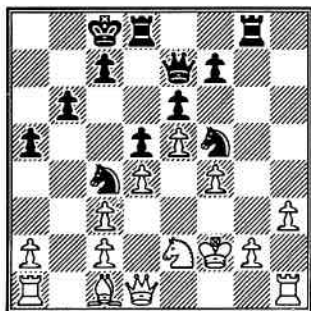
## Dowden Combination

Tony Dowden writes that he and his wife recently visited Germany for a month (where he met his wife's family for the first time), and while there he played in the Baden Rapid Championship. The field of 110 included 5 GMs and 20 IMs, and being seeded just below half-way Tony found that in Round 1 he played top seed GM Viktor Gavrikov 2605, formerly of Russia but now living in Switzerland.

Tony duly lost in the endgame and Gavrikov went on to win with 8/11, but Tony "rallied" to finish with 5/11 and beat FM Gerhard Zunker GER 2195 from the following position:

Zunker, Dr Gerhard FM - Dowden, Tony

Notes by Tony Dowden



1...♞h4+

Better than 1...♞xg2+.

2.♕g1 ♞xg2+

If 2.♕f1, ♞xg2 anyway.

3.♕xg2 ♞g8+!

3...♖f3+ "winning" ♞ for ♞, ♖ and ♖ does not clearly win.

4.♕f3 ♞g3+ 5.♖xg3 ♞xg3+ 6.♕e2 ♞g2+ 7.♕d3

The quick way out. However, 7.♕e1 also leads to mate after 7...♞xh1 8.♕e2 ♖xg3+ 9.♕f2 ♖e4+ 10.♕e2 ♞g2+ 11.♕d3 ♖c5+ 12.dxc5 ♞e4#.

7...♞e4# 0-1

## International news

By NM Peter Stuart

### Amsterdam

A decade of Max Euwe commemorative tournaments sponsored by VSB-Fonds, a Dutch bank, ended with this year's event in March. And a memorable event it was, too, with Gary Kasparov losing in the first round to Bulgaria's young star Veselin Topalov who went on to take a share of first prize with the PCA champion.

Topalov's third round loss to Nigel Short when he, unwisely as it turned out, repeated his first round play allowed a log-jam on 2 points and all five leaders drew in round 4. After this Kasparov, Topalov and Vladimir Kramnik were left to fight for the top places, the last mentioned dropping out of the race when he lost decisively to Kasparov in round 7. Worse was to come for Kramnik as, in trying to make up the lost ground in round 8, he lost to Anand in round 8 from a slightly superior position.

Kasparov enjoyed a half-point lead after round 7 but Topalov caught up in the penultimate round and both players won their final games, against Gelfand and Piket respectively, Kasparov in spectacular fashion and Topalov in a longish endgame.

Topalov - Kasparov

Sicilian [B86]

1.e4 c5 2.♖f3 d6 3.d4 cxd4 4.♖xd4 ♖f6 5.♖c3 a6 6.♖c4 e6 7.♖b3 ♖bd7 8.f4 ♖c5 9.0-0 ♖xe4 10.♖xe4 ♖xe4 11.f5 e5 12.♞h5 ♞e7 13.♞f3 ♖c5 14.♖c6 ♞c7 15.♖d5 a5 16.♖g5 ♞a6 17.♖d8 f6 18.♖f7 ♞g8 19.♖e3 g6 20.♖g5 ♞g7 21.fxg6 ♞xg6 22.♖f7+ ♞xf7 23.♖xf7 ♕xf7 24.♖xc5 dxc5 25.♞ad1 ♖e7 26.♞d5 ♖g4 27.♞e4 ♕g7 28.♞fd1 ♖xd1 29.♞xd1 ♞e6 30.♞f5 ♕f7 31.♞e1 b6 32.h4 ♞g7 33.♕f1 ♖d6 34.♕f2 ♖c7 35.♕f3 ♖e7 36.♞e4 ♕f7 37.♞g4 ♞e7 38.♕e4 ♞xg4+ 39.♞xg4 ♖d8 40.a4 ♕f8 41.c3 ♞g7 42.♞c8 ♕e8 43.♞e6+ ♕f8 44.g4 ♞f7 45.h5 ♞g7 46.h6 ♞g6 47.♖d5 ♖e7 48.♕f5 ♞xh6 49.♞b7 e4 50.♞b8+ ♕f7 51.♞xb6 e3 52.♞e6+ ♕e8 53.♞xe3 ♞g6 54.♞e4 ♞g5+ 55.♕f4 ♕d7 56.♞b7+ ♕e6 57.♞c8+ ♕f7

58.♞c7 h5 59.gxh5 ♞xh5 60.♞xa5 ♖d6+ 61.♕e4 f5+ 62.♕d5 ♖e7 63.♞c7 ♞h6 64.a5 ♞d6+ 65.♕e5 ♞f6 66.♞c8 1-0.

Kasparov - Anand

Caro-Kann [B14]

1.e4 c6 2.d4 d5 3.exd5 cxd5 4.c4 ♖f6 5.♖c3 ♖c6 6.♖g5 e6 7.♖f3 ♖e7 8.c5 h6 9.♖f4 ♖e4 10.♖b5 ♖xc3 11.bxc3 ♖d7 12.0-0 0-0 13.♞c1 ♞e8 14.♞e1 ♖f6 15.♞b1 b6 16.♖a6 ♖c8 17.♖b5 ♖d7 18.♖a6 ♖c8 19.♖d3 bxc5 20.♖e5 ♖d7 21.♞b7 ♖xe5 22.dxe5 ♞b8 23.♞xb8 ♞xb8 24.♞g4 ♕f8 25.♞e3 ♖d8 26.h4 ♞a5 27.♞g3 ♖e7 28.♞xg7 ♕d8 29.♞xf7 ♞xc3 30.♖b5 ♞a5 31.♞g7 ♖e7 32.♖xd7 ♕xd7 33.♞f6 d4 34.♖xh6 e4 35.♖g5 ♞c5 36.♞xe7+

After all the pieces are exchanged the black passed pawns are easily stopped while the white pawns can advance to f4, g5, h6 when the f4-f5 break forces a new queen.

1-0.

Lautier - Gelfand

Queen's Gambit [D47]

1.d4 d5 2.c4 c6 3.♖f3 ♖f6 4.♖c3 e6 5.e3 ♖bd7 6.♖d3 dxc4 7.♖xc4 b5 8.♖d3 ♖b7 9.0-0 a6 10.e4 c5 11.d5 c4 12.♖c2 ♞c7 13.dxe6 fxe6 14.♖d4 ♖c5 15.♖e3 0-0-0 16.♞e2 e5 17.♖f3 ♖xe4 18.♖xe4 ♖xe4 19.a4 ♖c5 20.axb5 axb5 21.b3 cxb3 22.♖f5+ ♕b8 23.♞xb5 g6 24.♖h3 ♞d5 25.♞fb1 ♞c6 26.♞c4 ♖e7 27.♖d2 ♞hd8 28.♖xb3 ♞a4 29.♖xc5 ♞d1+ 30.♞xd1 ♞xd1+ 31.♞xd1 ♞xc4 32.♖d7+ 1-0.

Kramnik - Seirawan

Sicilian [B29]

1.♖f3 c5 2.e4 ♖f6 3.♖c3 d5 4.exd5 ♖xd5 5.♖b5+ ♖d7 6.♖e5 ♖f6 7.♖xd7 ♖bxd7 8.d4 cxd4 9.♞xd4 a6 10.♖e2 e6 11.♖f4 ♖c5 12.♞d3 0-0 13.0-0 b5 14.♖f3 ♞a7 15.♞ad1 ♞a5 16.a3 b4 17.♖a2! bxa3 18.b4 ♖xb4

18...♞a4 19.♞b1 threatening ♖c3.

19.♖xb4 ♞xb4 20.♖d6 ♞a5 21.♖xf8 ♕xf8 22.♞a1 ♖c5 23.♞d6+ ♞e7 24.♞fb1 ♖e8 25.♞b8 ♖d7 26.♞a8 ♞c5 27.♞xc5 ♖xc5 28.♖c6 f6 29.♞xa3 ♕f7 30.♖xe8+ ♞xe8 31.♞xe8 ♕xe8 32.♞a5 1-0.

			1	2	3	4	5	6	7	8	9	10			
1	Topalov V.	RUS	g	2700	x	1	0	1	0	1	½	1	1	1	6½
2	Kasparov, G.	BIH	g	2775	0	x	½	1	1	½	1	1	1	½	6½
3	Short, N	ENG	g	2665	1	½	x	0	½	0	½	1	½	1	5
4	Anand, V	IND	g	2725	0	0	1	x	1	½	½	½	½	1	5
5	Kramnik, V	RUS	g	2775	1	0	½	0	x	½	1	½	½	½	4½
6	Lautier, J	FRA	g	2630	0	½	1	½	½	x	0	1	0	1	4½
7	Seirawan, Y.	USA	g	2630	½	0	½	½	0	1	x	0	1	½	4
8	Gelfand, B.	BLR	g	2700	0	0	0	½	½	0	1	x	1	½	3½
9	Piket, J.	NED	g	2570	0	0	½	½	½	1	0	0	x	½	3
10	Timman, J	NED	g	2620	0	½	0	0	½	0	½	½	½	x	2½

**Topalov – Timman**  
[B12]

1.e4 c6 2.d4 d5 3.e5 Qf5 4.f3 e6 5.Qe2 d7 6.0-0 h6 7.b3 e7 8.c4 e6 9.ea3 ef4 10.Qxf4 Qxa3 11.Qd3 Qg4 12.Eb1 e7 13.h3 Qh5 14.Qe2 0-0 15.Qe3 a5 16.cxd5 cxd5 17.Qxh6 Qxf3 18.gxf3 Qh4 19.fh1 f5 20.Eg1 f7 21.Qxg7 Exg7 22.Qh6 Qg5 23.Qxe6+ Qh8 24.Qxf5 Qe7 25.Qg4 Qxe5

25... Ef8 26.h4 Qf4 27.Qh5+ Qg8 28.Exg7+ and Eg1 wins.

26.dxe5 Qxe5 27.Ebe1 Qf4 28.Qh5+ Qg8 29.Exg5 Exg5 30.Qh7+ Qf8 31.Qh6+ Qf7 32.Qg6+ 1-0.

**Reykjavik**

The VISA Open in the Icelandic capital saw a three-way tie for first between tournament favourite GMs Predrag Nikolic BIH, Simen Agdestein NOR and Jonathan Tisdall NOR on 7 points. Danish IM Nikolaj Borge shared the 6½ bracket with GM van der Sterren NED. Five more GMs tied for 6th place: C.Hansen DEN, Hector SWE, Petursson ICE, Rosentalis LIT and Stefansson ICE.

**Bronstein – Gretarsson**  
King's Indian [E92]

1.d4 e6 2.f3 g6 3.c4 Qg7 4.Qc3 0-0 5.e4 d6 6.Qe2 e5 7.d5 h6 8.h3 ebd7 9.Qe3 Qc5 10.e2d2 a5 11.g4 e8 12.h4 f5 13.gxf5 gxf5 14.exf5 Qxf5 15.f1 f6 16.e3g3 Qd7 17.Eg1 Qh7 18.Qd2 ece4 19.Qxf5 Qxd2 20.Exg7+ Qxg7 21.Qxg7 Qxg7 22.Qxd2 e8 23.Qg4 f7 24.Qe6 Ee7 25.c5 a4 26.cxd6 cxd6 27.Qb5 Ed8 28.Qb6 1-0

**Hector – Vidarsson**  
Sicilian [B43]

1.e4 c5 2.f3 e6 3.d4 cxd4 4.Qxd4 a6 5.Qc3 g6 6.Qe3 Qg7 7.Qb3

7...Qc6 is, of course, better for White but the text loses immediately.

7...Qe7 8.Qa4 Qbc6 9.Qb6 1-0

**Hector – Agdestein**  
French [C10]

1.e4 e6 2.d4 d5 3.Qc3 Qf6 4.Qg5 dxe4 5.Qxe4 ebd7 6.f3 Qe7 7.Qxf6+ Qxf6 8.Qd3 c5 9.dxc5 Qa5+ 10.c3 Qxc5 11.Qe2 Qd7 12.Qe5 Qc6 13.0-0 Qd7 14.Qe7 Qxe7 15.Qxc6+ bxc6 16.Qe4 Ed8 17.Qf3 g5 18.b4 Qc4 19.Qe3 h6 20.Qc2 c5 21.f4 cxb4 22.fxg5 Qxc3 23.Qf4 Ehf8 24.Qb3 Qc5+ 25.Qh1 hxg5 26.Qg3 Qe5 27.Qg4 Eh8 28.Qxb4+ Qc5 29.h3 Ed3 30.Qg1 Ehxh3 31.Qd1 Ee4 32.Qa5 Qh2+ 33.Qf2 Ef4+ 0-1

**New York**

England's Michael Adams scored an undefeated 8½/11 to win the category 13 "Chess-in-the-Schools International" in March. His performance rating was around 2750. Bosnian GM Ivan Sokolov took second place, 1½ points behind with another half point back to the quartet of Joel Benjamin (USA), Viktor Korchnoi (SWI), Valery Salov (RUS) and Patrick Wolff (USA).

An unusual feature of the tournament was the division of the prize fund with half (\$10,000) being awarded according to final placings as usual but the other half being awarded as "win money", the total number of

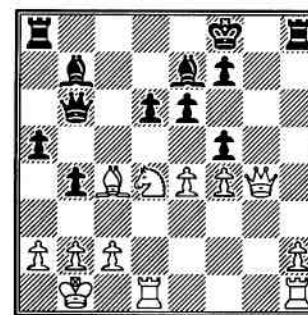
wins (36) being divided into the \$10,000. Thus Adams gained a bonus of almost \$1700 for his six wins, a figure equalled by Korchnoi with his +6-4=1 record.

**De Firmian – Adams**  
Ruy Lopez [C89]

1.e4 e5 2.f3 Qc6 3.Qb5 a6 4.Qa4 Qf6 5.0-0 Qe7 6.Ee1 b5 7.Qb3 0-0 8.c3 d5 9.exd5 Qxd5 10.Qxe5 Qxe5 11.Exe5 c6 12.d4 Qd6 13.Ee2 Qh4 14.g3 Qh3 15.Qd2 Qf5 16.a4 Eae8 17.Exe8 Exe8 18.f1 h5 19.axb5 axb5 20.Ea6 Qe7 21.Ea7 h4 22.Qe3 hxg3 23.fxg3 Qxg3 24.hxg3 Exe3 25.Qxe3 Qxg3+ 26.Qf1 Qh3+ 27.Qe2 Qg4+ 28.Qd2 Qxd1 29.Qxd1 Qd5 30.Ea8+ Qh7 31.Ee8 f5 32.Qe2 Qh2+ 33.Qd3 Qxb2 0-1.

**Adams – Serper**  
Sicilian [B66]

1.e4 c5 2.f3 d6 3.d4 cxd4 4.Qxd4 Qf6 5.Qc3 Qc6 6.Qg5 e6 7.Qd2 a6 8.0-0-0 h6 9.Qe3 Qe7 10.f4 Qxd4 11.Qxd4 b5 12.Qe3 Qb7 13.Qxf6 gxf6 14.Qd3 Qa5 15.Qb1 b4 16.Qe2 Qc5 17.Qd4 h5 18.Qe2 a5 19.Qb5+ Qf8 20.Qc4 Qb6 21.g4 hxg4 22.Qxg4 f5

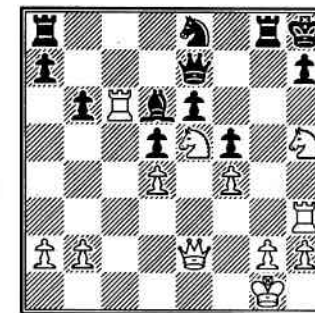


23.Qxe6+! fxe6 24.Qg6 Qc7 25.Qxe6 Qe8 26.Ehg1 Qxe4 27.Eg7 Qd8 28.Exe7 Qxe7 29.Exd6+ Qxd6 [29...Qe8 30.Qg6+ Qf8 31.Ef6+ +-] 30.Qxd6+ Qe8 31.Qe5+ 1-0.

**Adams – Benjamin**  
Sicilian [22]

1.e4 c5 2.f3 e6 3.c3 Qf6 4.e5 Qd5 5.d4 cxd4 6.cxd4 b6 7.Qc4 Qa6 8.Qxa6 Qxa6 9.0-0 Qe7 10.Qbd2 0-0 11.Qe4 Qac7 12.Qg5 f6 13.Qxf6

Qxf6 14.Qxf6 gxf6 15.Ec1 d5 16.Qg3 Qd7 17.Qh4 Qd6 18.f4 f5 19.Qh5 Qf7 20.Ef3 Qh8 21.Eh3 Eg8 22.Qf3 Qe7 23.Qe2 Qe8 24.Ec6 Qd7 25.Qe5 Qe7



26.Exd6! Qxd6 27.Qc6 1-0.

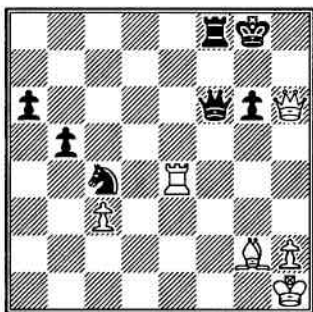
Following the CITS tournament was the annual New York Open, won by Dutch GM Loek van Wely with 7½/9. Adams tied for second on 7 points with GMs Alexander Chernin HUN, Roman Dzindzihashvili USA, Alexander Yermolinsky USA and Jaan Ehvest EST, as well as IM Bass Lugo USA.

**Ter Apel**

The 9th "Cloister Tournament" was, as usual, small and strong – 6 players, category 15. Ulf Andersson won twice and drew his other three games to take an undivided first place with 3½/5. Clear second was Predrag Nikolic on 3 then Friso Nijboer and Peter Svidler RUS 2½, Peter Leko HUN 2 and Lembit Oll EST 1½.

**Andersson – Nijboer**  
Queen's Pawn (A49)

1.d4 Qf6 2.f3 g6 3.g3 Qg7 4.Qg2 0-0 5.0-0 d6 6.Qc3 ebd7 7.a4 a6 8.e4 e5 9.dxe5 dxe5 10.a5 b5 11.axb6 cxb6 12.Qe2 Qb7 13.Ed1 Qc7 14.Qd5 Qxd5 15.exd5 Efe8 16.Qg5 h6 17.Qe4 f5 18.d6 Qc8 19.Qc3 e4 20.Qd5 Qxd5 21.Exd5 Qc6 22.Ed1 Ee6 23.c3 b5 24.Qe3 Exd6 25.Exd6 Qxd6 26.Ed1 Qe6 27.Qd2 Qe5 28.Qxh6 Qc4 29.Qg5 Qxh6 30.Qxh6 Qxb2 31.Ed4 Qc4 32.g4 Ef8 33.gxf5 Qxf5 34.Exe4 Qxf2+ 35.Qh1 Qf6



36. ♖f4! ♗xf4 37. ♕d5+ ♜f7  
37 ... ♖f7 38 ♗xf4.  
38. ♗xg6+ 1-0

### Eupen

A strong open rapid tournament in this Belgian town was won by Larry Christiansen USA on tie-break from Andrei Kovaliev BLR. Both GMs won their first six games in the 300 player field and were content with a short draw in the final round. Top seed Artur Yusupov finished in a tie for third place on 6 points with fellow German GMs Ralf Lau and Jörg Hickl as well as GMs Ye Rongguang PRC, Krum Georgiev BUL and Alexander Wojtkiewicz POL.

### Monaco

Vladimir Kramnik won the 5th Melodie Amber tournament, leading all the way in this combination rapid/blindfold event. The Fischer time control method was used with players having 25 minutes plus 10 seconds per move in the rapid games, the same but 20 seconds per move in the blindfold games in which the players entered their moves on computer monitors.

Kramnik was supreme in the blindfold games, scoring 9/11 and finishing 1½ points ahead of Viswanathan Anand. Next were Vassily Ivanchuk on 7 and Anatoly Karpov on 6½. In the rapid games Anand and Ivanchuk headed the field with 7½ followed by Kramnik and Jeroen Piket on 7.

The full scores were: 1 Kramnik (RUS) 16; 2 Anand (IND) 15; 3 Ivanchuk (UKR) 14½; 4 Gata Kamsky (USA) 12; 5-7 Karpov (RUS), Joel Lautier (FRA) & Alexei Shirov (ESP) 11½; 8-9 Piket (NED) & J. Polgar (HUN) 11; 10 Predrag Nikolic (BIH) 8½; 11 Ljubomir Ljubojevic (YUG) 5; 12 Xie Jun (PRC) 4½.

### Moscow

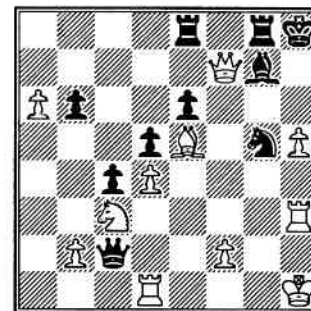
The first leg of the 1996 PCA Rapid Grand Prix was staged in the Russian capital in April with the by now familiar format of two-game matches with 25 minutes per player and single lightning game play-offs in which Black (4 minutes to White's 5) has draw odds. Not for the first time Vladimir Kramnik and Gary Kasparov made it through to the final with the former winning. Both rapid games in the final were drawn and in the two-game lightning play-off Kramnik won the first with the black pieces to take the match 2½-1½.

Kramnik, however, was somewhat lucky to get past the first round as, after drawing with the white pieces against Short, he was probably losing with black until the Englishman failed to find the winning culmination to his attack. Perhaps one can no longer talk of Judit Polgar causing upsets but the scalp of Vassily Ivanchuk in the quarter-finals might qualify. In the semi-finals Kramnik beat Polgar 1½-½ while Kasparov defeated Anand by the same score.

### Short – Kramnik Queen's Pawn [A48]

1.d4 e6 2.c3 g6 3.♗g5 ♗g7 4.♗d2 0-0 5.e3 d6 6.♗g3 ♖e8 7.♗e2 e5 8.0-0 h6 9.♗h4 ♗f5 10.a4 e6 11.a5 e4 12.♗e1 g5 13.♗g3 e7 14.a6 b6 15.♗c2 ♗g6 16.♗b4 c5 17.♗c2 f5 18.♗a3 ♗d8 19.♗b3 ♖e7 20.♗b5 h5 21.h3 g4 22.♗f4 gxf3 23.gxf3 e7 24.♗h2 ♖h4 25.♗xe4 e7 26.cxd4 ♗xe4 27.♗g3 ♖e7 28.♗xh5 ♗h8 29.♗ad1 d5 30.♗c3 c4 31.♖a3 ♖g5 32.♗e2 ♗f5 33.♗h1 ♖h6 34.♗g2 ♗g8 35.♗g4 ♖g6 36.♖e7 ♗e6 37.♗xe6 fxe6 38.h4

♗de8 39.♖xa7 ♗h6 40.h5 ♖c2 41.♗h3 ♗xe3 42.♗h1 ♗h6 43.♖f7 e6 44.♗e5+ ♗g7



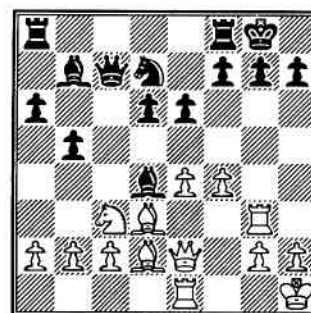
45. ♖f4??

45. ♗xg7+! ♗h7 46. ♖f6 ♖xg7 47. ♗g3 is probably winning for White.

45... ♗xh3 0-1.

### Polgar, J. – Ivanchuk Sicilian [42]

1.e4 c5 2.♗f3 e6 3.d4 cxd4 4.♗xd4 a6 5.♗d3 ♗c5 6.♗b3 ♗a7 7.♗c3 e6 8.0-0 e7 9.♖e2 d6 10.♗h1 b5 11.f4 ♖c7 12.♗d2 0-0 13.♗ae1 ♗b7 14.♗f3 e7 15.♗xd4 ♗xd4 16.♗g3 e7



17. ♗xb5! e6

17... ♗xb5 18. ♗xb5 ♖b6 19. ♗xd4 ♖xd4 20. ♗c3 +.

18. ♗d3 ♖fe8 19. ♗d1 f5 20. ♗c3 ♗xc3 21. ♗xc3 fxe4 22. ♗xe4 ♗xe4 23. ♗xe4 ♖ab8 24. b3 d5 25. ♗d3 ♖xf4 26. ♗f1 e7

... ♗d6 27. ♖h5 and mate in 3 or 26... ♖h6 27. ♖h3 with a winning attack.

27. ♖xf4 e7 28. ♖g4 e6 29. h4 ♖b7 30. h5 e7 31. c4 h6 32. c5 ♖c8 33. b4 a5 34. a3 ♖c6

35. ♖d4 axb4 36. axb4 ♖bc7 37. ♗h2 ♖b7 38. b5 ♖cc7 39. ♖b4 e5 40. b6 ♖c8 41. ♖b5 ♖cb8 42. c6 ♖xb6 43. ♖xd5+ ♗h8 44. ♖xe5 1-0.

### Kasparov – Anand Sicilian [B84]

1.e4 c5 2.♗f3 d6 3.d4 cxd4 4.♗xd4 e7 5.♗c3 a6 6.♗e2 e6 7.f4 ♗e7 8.0-0 0-0 9.♗e3 ♖c7 10.g4 ♖e8 11.g5 e7 12.♗d3 e6 13.♖h5 g6 14.♖h4 ♗f8 15.♖f3 ♗g7 16.♗d2 b5 17.♖h3 e7 18.f5 e5 19.f6 ♗h8 20.a3 ♖b8 21.b4 ♗b7 22.♖f1 ♖bc8 23.♗d4 e6 24.♗e3 e5 25.♖f4 ♖d7??

25... ♗xd3 26.cxd3 ♖d7 27. ♖h6 e5 should not be worse for Black.

26. ♖h6 e7 27. cxd3??

27. ♖h4! and Black is helpless against the threat of 28 ♖xh7+! ♗xh7 29 ♖xh7 followed by ♖h8 mate.

27... e5 28. ♖f1

Too late for 28. ♖h4 as 28... ♖e6 favours Black slightly.

28... ♖c7 29. ♗b6 ♖c6 30. e5 ♗c8 31. ♖e3 ♖b7??

31... e6 is unclear.

32. ♗d8! e6 33. e7+ ♖xe7 34. fxe7 ♖d7 35. ♖h3 1-0.

### Kasparov – Kramnik Queen's Gambit [D32]

1.c4 c5 2.♗f3 e6 3.♗c3 e7 4.e3 e6 5.d4 d5 6.cxd5 exd5 7.♗b5 cxd4 8.♗xd4 ♗d7 9.0-0 ♗d6 10.♗f3 a6 11.♗e2 ♗e6 12.a3 0-0 13.b4 ♖e7 14.♗b2 ♖fe8 15.♗d4 ♗e5 16.♗xc6 bxc6 17.♗a4 ♗xb2 18.♗xb2 c5 19.bxc5 ♖xc5 20.♗d3 ♖d6 21.♗f4 ♗f5 22.♗f3 ♖ad8 23.♖d4 ♗e4 24.♗e2 ♗f5 25.♗f3 ♗e4 26.♗e2 ♗f5 27.♖b4 d4 28.♖xd6 ♖xd6 29.♖fd1 g5 30.♗h5 e7 31.♗xh5 d3 32.♗d2 g4 33.f3 gxf3 34.♗xf3 ♖xe3 35.♖c1 ♖e5 36.♗f2 ♗g7 37.♖c4 ♖a5 38.♖c3 ♖b5 39.h4 h6 40.♗e3 a5 41.♗f2 ♗d4 42.g3 ♖e5 43.♖c7 ♖a4 44.♖c3 ♗g6 45.♖b3 ♖c4 46.g4 ♖c2 47.♖b2 ♖xd2+ 48.♖xd2 f6 49.♗g3 ♖e5 50.♗f4 ♖c3 51.♖b2 ♖xa3 52.♖b7+ ♗f8 53.♖d7 ♖a4+ 54.♗e3 f5 55.h5 ♗e8 56.♖xd3 f6 57.♗e4 ♗xh5 58.♖d6 ♗g7 59.♖d7+ ♗f6 60.♖d6+ ♗g5 61.♗c2 ♖a3+ 62.♗f2 g3+ 63.♗g1 ♗f3 0-1.

## NZCF Council report

By NZCF President Ted Frost

### Club changes

Following the changes in federation rules, the Palmerston North and Napier Chess Clubs have applied to rejoin the federation as associate members. Both clubs have had small membership in recent years, although Palmerston North reports healthy growth this season. Both clubs have a long history and have been strong in the past, both in playing strength and administration - both have had New Zealand champions as members and both have held Congresses.

A Whangarei club has also been formed, with members joining and registering through the Gambit club. This is the first time there has been a chess club within the national chess organisation in the far north.

### Player registration

More than 360 players have registered so far under the new rules, and two or three major clubs have not yet sent in registration cards. The registered players include some 120 juniors - more than double the number previously identified by federation and there are at least two dozen female players.

Results sent in to federation for rating since the mid-year list closed off include at least 20 unrated players. They will be allocated code numbers which will be circulated to clubs, and can be added to their registration cards. This will assist identification in later tournaments.

### NZ Chess homepage on Internet

Michael Freeman advised NZCF of his intention to launch of chess homepage on the World Wide Web. Council has supported this venture and will give it full support. This will include the supply of information, which will not be subject to any copyright restraints.

The address of Michael's homepage is:  
<http://ourworld.compuserve.com/homepages/nzchess/>

The launching of the homepage was followed by a request from Craig Blaxall, of PlaNet, for permission for PlaNet to use chess information. Council has agreed.

### FIDE rating

In a series of recent FIDE rating lists Bruce Anderson CA has been given two ratings, because of a small discrepancy in the information notified to FIDE from two tournaments. NZCF has asked for this to be corrected and the latest letter from the FIDE president includes a correction.

Bruce has a FIDE rating of 2215 (previously he was credited with 2235 and 2155). The July 1 list should confirm that he now has only one rating.

### Entries in Australian Masters

Several top New Zealand players were invited to play in the 1996 Australian Masters tournament in Melbourne, from June 30 to July 12, but other commitments caused some refusals.

Eventually, in spite of their subsequent Olympiad commitments, ICM Michael Freeman and NM Bob Smith accepted invitations to play.

The overseas players include Terry Toh SIN and Luca Barillaro ITA. Three Australian IMs taking part are Mikhail Gluzman, Aleksander Wohl and Stephen Solomon.

### Ashburton's outdoor set

Roy Keeling, subject of a personality profile in the last issue of *NZ Chess*, has written to make it clear that he was not the key person in setting up the outdoor chess board in Ashburton, but that the District Council was the moving force. The local Lions Club provided the men.

Roy also points out that his game against Stephen Coates was played in the 1995 South Island championship in Dunedin.

## Affiliated Clubs

**Ashburton** PO Box 204, Ashburton. Meets Mondays 7.30pm (Feb-Oct), Room 1 (upstairs), Public Library, cnr Havelock and West Streets. Contacts, Roy Keeling (03)308-6936, Stephen Taylor (03)308-3557.

**Auckland Chess Centre** Meets Mondays & Thursdays 7.15pm, junior coaching Wednesdays, 17 Cromwell St, Mt Eden, Auckland 1003. Tel (09)630-2042 clubroom.

**Canterbury** 227 Bealey Avenue, Christchurch. Wednesdays, 7.30pm. Tel (03)366-3935 clubroom. Pres, Mark Guy, 9 Bennett St (03)352-6991. Sec, Pat Jordan (03)338-4274.

**Civic** Tuesdays 7.30pm, Museum Room, Turnbull House, Bowen Street, Wellington 1. Pres, Alan Aldridge (04)477-4784; Sec, Bill Ramsay (04)384-8882.

**Gambit** Sec, Ted Frost, 17 Croydon St, Karori, Wellington 5 (04)476-4098.

**Hamilton** Inquiries Pres, Hilton Bennett, 65 Te Aroha St (07)855-1037.

**Hastings-Havelock North** P.O. Box 184, Hastings. Wednesdays 7pm, Library, Havelock N High School, Te Mata Rd. Sec, Chris Smith (06)877-4583.

**Howick-Pakuranga** Tuesdays 7.30pm, St John Ambulance Hall, Howick-Pakuranga Highway, Highland Park. Pres, Paul Spiller (09)535-4962.

**Invercargill** Wednesdays 8pm, staff room, South School, Ness St. Sec, Robert Mackway Jones, 5 Pine Cres, Invercargill (03)217-1154.

**Kapiti** Wednesdays, 7.30pm, Salvation Army Hall, Bluegum Rd. Paraparaumu Beach. Pres, Guy Burns, 226 Main Road Sth, Paraparaumu (04)297-0462. Sec, Bill Cox, 25 Jeep Rd, Raunaki Sth (04)298-8589.

**New Plymouth** 11 Gilbert St, New Plymouth. Tuesdays, 7.30pm. Pres, R P Bowler, 17a Hori St (06)753-6282. Contact, Keith Okey, 253d Coronation Ave (06)758-8811.

**North Shore** P.O. Box 33-587, Takapuna, Auckland 9. Meets Wednesdays 7.30pm, Northcote Community Centre, cnr College Rd/Ernie Mays St, Northcote. Club capt, Peter Stuart, 24 Seacliffe Ave, Belmont (09)445-6377.

**Otago** 7 Maitland St, Dunedin. Wednesdays and Saturdays, 7.30pm. Tel (03)477-6919 clubroom. Sec, Dennis McCaughan (03)478-0160.

**Papatoetoe** Wednesdays 7.30pm, St George's Anglican Church Hall, Landscape Rd, Papatoetoe. Contacts, John McRae (09)278-4520 or Katrine Metge (sec) 278-7173.

**Upper Hutt** Mondays 7.30pm, Hapai Club, 879 Ferguson Drive. Sec, Glen Sullivan, 14a Crystal Grove, Birchville, U Hutt (04)526-5085.

**Waiwaka** Thursdays 7.30pm, Kelston Community Centre, cnr Great North Rd and Awaroa Rd, Kelston. Pres, Bob Smith, 2 Autumn Ave, Glen Eden (09)818-4113 or contact Bruce Pollard (09)834-8151.

**Wanganui** Mondays, 1st floor, Commercial Club, St Hill St. Pres, Gordon Hoskyn, 7 Pehi St (06)343-6101; sec, K Yorston, 5 Mitchell St (06)343-7166.

**Wellington** Saturdays 7.30pm, Blind Social Club, Westbrook House, 181 Willis Street.; 6pm, juniors. Pres, Tim Frost (04)476-3541. Sec, Ted Frost (04)476-4098.

### Associate members

**NZ Correspondence Chess Assn**, P.O. Box 3278, Wellington. Sec, J W (Sandy) Maxwell, (04)237-4753.

**Palmerston North** Tuesdays, 7.30pm, Palm Nth Intermediate School, Ferguson St. Club capt, Ian Barker, 72 Argyle Street (06)353-0193.

**Petone Gambit** Thursdays 7.30pm Central Bowling Club, Roxburgh St, Petone. Pres, Mark Noble, 97 Seddon St, Naenae, Lower Hutt (04)567-0467.

**Whangarei Gambit** Thursdays 7pm, Whangarei YWCA. Sec, Paul Bell (09)438-8053.

### District Associations

**Auckland Chess Assn**, Pres, Peter Stuart, 24 Seacliffe Ave, Belmont, Auckland 9. (09)445-6377.

**Wellington District Chess Assn Inc**, sec, Ted Frost, 17 Croydon St, Karori, Wellington 5; (04)476-4098.