

## NEW ZEALAND CHESS SUPPLIES

PO BOX 42090 WAINUIOMATA

PHONE (04) 5648 578

FAX (04) 5648-578

STOCKISTS OF THE WIDEST SELECTION OF MODERN CHESS LITERATURE IN AUSTRALASIA. CHESS SETS, BOARDS, CLOCKS. STATIONERY AND ALL PLAYING EQUIPMENT. ELECTRONIC CHESS AND DATABASE - COMPUTERS A SPECIALTY. DISTRIBUTORS OF NOVAG, SAITEK AND MEPHISTO WORLD CHAMPION MODELS.

SEND S.A.E FOR BROCHURE AND CATALOGUE (STATE YOUR INTEREST).

### AUCKLAND RETAIL

#### PRIME TIME GAMES LTD

STRAND ARCADE, QUEEN STREET, AUCKLAND

NEW ZEALAND'S ONLY COMPLETE CHESS RETAIL STOCKIST

TELEPHONE (09) 358-0282

### NEW BOOKS IN STOCK

*A new edition of an international master*

## The Oxford Companion to Chess

Second Edition

DAVID HOOPER, KENNETH WHYLD

Revised and expanded by the authors of the acclaimed first edition

2600 entries

23 x 15.5 cm, 480 pages

580 pictures and chess diagrams

Price: \$92.00, post paid

HARD COVER

## MR CHESS

### THE ORTVIN SARAPU STORY

The autobiography of New Zealand's best-known chessplayer

160 pages (approx)

210mm x 148mm

Price \$34.95

Four colour cover

10 black and white photographs

### CJS Purdy's

#### Fine Art of Chess Annotation and Other Thoughts

100 annotated games

Price \$42.00

'EVERYTHING FOR CHESS AT N.Z.C.S'

# New Zealand Chess



The official magazine of the New Zealand Chess Federation

Volume 19 Number 3

June 1993 \$3.00 (inc GST)



Four Contenders for the World Title

is the official journal of the New Zealand Chess Federation published bimonthly (February, April, June, August, October, December).

All correspondence, subscription renewals, changes of address, advertising inquiries, articles and other copy should be addressed to *N.Z. Chess, P.O.Box 3130, Wellington.*

Opinions expressed in articles, letters and other contributions are those of the authors. Letters to the editor on any chess topic are welcome; limit 150 words, and marked "for publication."

#### ANNUAL SUBSCRIPTION RATES

Surface mail

New Zealand	\$NZ18.00
Other countries	\$US20.00

Airmail

Australia and South Pacific	\$US20.00
Other countries	\$US25.00

Back issues are available - send for details.

#### ADVERTISING RATES

Full page	\$NZ45.00
Half page or full column	\$NZ22.50
Half column	\$NZ12.00
Club Notices or Classified,	\$NZ1.50 per 15 words

#### COPY DEADLINE

All copy should reach NZ Chess by the second Saturday of the month before publication.

The deadline for the August issue is  
**Saturday, July 17**

Copy should include details of coming events for the rest of the year.

Copy on MSDOS floppy disks (any size) are more than welcome, they are preferred to paper! All disks will, of course, be returned. Apologies to contributors whose disks have yet to be returned - they are "in the mail"! Really!

#### Asian teams tourney

A five-player team is representing New Zealand at the 1993 Asian teams tournament in Kuala Lumpur, June 15-26. Members of the team are funding their own participation in the nine-round tournament, at a basic cost of about \$1000 each.

The team, listed in playing order, consists of Stephen Lukey (Canterbury), Anthony Love (Dunedin, playing captain), Bruce Anderson (Canterbury), Michael Freeman (New Plymouth) and John Sutherland (Dunedin). Mrs Janet Anderson, Bruce's wife, is team manager.

#### North Island Championship

When Robert Smith drew with Jonathan Sarfati in Round 8 of the NI Championship, he assured himself of at least a tie for first place, but also qualified for the title of NZ National Master. Mark Noble ground out a win against Graeme Spain to tie with Smith on 6½, followed by Sarfati, IM Ortvín Sarapu and Anthony Ker 6.

Other prizes: Grade 1, Alan Aldridge and Craig Blaxall; grade 2, Philip Hair; grade 3, George Trundle and Lawrence Farrington; grade 4, Edith Otene; under-16 prize, David Guthrie and Francis Hoffmann; upset prizes, Ben Giles 1st, Alf Jones 2nd.

#### Wellington Queen's Birthday

Russell Dive survived an early-round oversight and loss of a piece and the game to Jon Jackson to win the Wellington QB tournament with 4/5, followed by Gavin Marner 3 and Hilton Bennett, Peter van Dijk and Jackson 2½. Other results: B grade, Kent Wong 4½, Richard Glover and Mark Sinclair 4; C grade, Ricardo Paino, Bruce Dellaca and Aaron Howard 2½; under 12 prize, Teresa Sheehan.

Sixteen year old Auckland Schoolgirl Champion **Joyce Ong** of the Howick-Pakuranga Club will represent New Zealand at the Asian Under-20 Junior Girls in Adelaide next month.

Cover: *World Championship Contenders*  
*Anatoly Karpov, Garry Kasparov,*  
*Jan Timman and Nigel Short*

# New Zealand Chess

Easter is a busy time on the New Zealand Chess scene and this issue reports on the tournaments held. There is also the new Rating Lists, the latest news and more!

## Contents

- The latest information from overseas suggests that there will be two **World Chess Championship** matches held in September. Ted Frost has been keeping an eye on developments.
- The **N.Z. Junior and Under-16 Championships** were held in Wellington at Easter. Ted Frost reports.
- The **Auckland Easter** is reported on by Craig Blaxall.
- Tony Love reviews the **Fuji Xerox Otago Easter Open**.
- Civic Easter** by Rowan Wood.
- Paul Spiller and Ortvín Sarapu review the recent **Howick-Pakuranga Latvian Gambit**.
- Ted Frost reports on the four **Regional Schoolpupil Championships** held recently.
- Three New Zealanders recently went to Canberra to contest the **31st Doeberl Cup** at Easter. Bob Smith reports on the experience.
- The **NZCF Standard Rating List**.
- The **NZCF Rapid Rating List**.
- The latest in News from around New Zealand.
- Ortvín Sarapu annotates an interesting game from the the recent Howick-Pakuranga Latvian Gambit, Jonathan Sarfati follows up with a whole lot more ... Wanganui's leading players analyse a game from the recent Blackburn Cup match between them and New Plymouth ... and as if that is not enough there are games from the NZ Junior, the Jakarta Zonal, ...
- International News** by editor pro tempore Ralph Hart.
- Coming Events** on the Local and International front.
- Council Report** by NZCF Secretary Ted Frost.

## ... And coming up in the August Issue

Full reports on the North Island Championship and Queen's Birthday tournaments...the Asian Teams Tournament...and a special section by FM Anthony Ker on arguably the most important game from the 100th NZ Chess Championship!

## Two World Title Matches

The latest information from overseas suggests that there will be two world chess championship matches held in September, and between them they will attract unprecedented international media and public attention.

FIDE intends to run a FIDE final between Jan Timman and Anatoly Karpov, who were both eliminated in the candidates' matches in which Nigel Short won the right to challenge champion Garry Kasparov. It has been reported that FIDE intends to remove Kasparov and challenger Nigel Short from its rating list. NZCF Council considers that such a move could do more harm than good for FIDE, and is to point out the risks to FIDE.

While details of the FIDE event have not been announced as this issue of NZ Chess goes to press, it is not likely to match in either attention or money an unofficial match between Kasparov and Short, which is due to start in London on September 7. The sponsors are the Times newspaper and a Dutch communications company, Teleworld BV, which will run a worldwide interactive chess game in conjunction with the event (more details in NZ Chess August issue).

While Kasparov and Short are opponents across the board, they are business partners in this venture. Not only are they dissatisfied with FIDE organisation, but they have also given away the Grandmasters' Association, with which they were both involved, and they have set up a breakaway Professional Chessplayers' Association (PCA) as the organising body.

The prize fund will be 1.7 million pounds (about \$NZ5 million), with five-eighths going to the winner and three-eighths to the loser. At the end of the Linares tournament (a category 18 event, the highest-rated tournament in chess history, won by Kasparov by 1½ points), Kasparov gave an interview in which he summed up the position: "...if FIDE wants to create a situation as in boxing with several world champions, it is OK by me. The public will always know who is the real champion, because he plays for the biggest money. It is as simple as that."

It is obvious that interest in the Short-Kasparov match will be high, stimulated by high-profile media competition, and with the added spice of a rival "official" match at the same time. It promises to be the biggest international attention-getter for chess since the hey-day of Bobby Fischer.

## Correspondence chess

### Hampl wins Championship

Sandy Maxwell reports that prizewinners from NZCCA's 1992-93 tourneys are:

59th NZCCA Championship, Michael Hampl, (Wellington); Reserve Championship, Tony Love (Dunedin); Trophy Tourney Grade 2, Graeme Stringer (Howick); TT 3, Murray Dunwoody (Te Awamutu); TT 4, W Anderson (Rotorua).

Handicap placings: Chris Mold (Auckland) 1st, John Williams (Auckland) and Earl Roberts (Levin) 2nd=, Jonathan Palmer (Tauranga) 4th, Gavin Dawes (Christchurch) 5th.

### NZ team in Olympiad

IM Mark Noble reports that for the first time New Zealand has entered a team in the correspondence chess Olympiad. The team is playing in section 2 of the preliminary round of the 12th Olympiad.

The New Zealand team is Noble, current NZ champion Michael Hampl, Bruce Barnard, J O (Ossie) Bishop, Martin Sims of Te Puke and Hilton Bennett. The reserves are Bob Mitchell and John Barrance.

The team's opponents in this round are Sweden, Solvenia, Lithuania, Luxembourg, Algeria, South Africa, Italy, Mexico, Gemany, Hungary and Wales.

Mark says his opponents include three correspondence GMs and four IMs. He intends to report progress in NZ Chess, including updates on the position in individual games.

by Ted Frost

## NZ Junior and Under-16 Championships

by Ted Frost

A Black bishop developed at a6 helped decide both titles at the N.Z. Junior and Under-16 Championships held in Wellington at Easter. Mark Vincent, top seed in the junior event, lost this bishop to David Guthrie in the last round, and subsequently lost the game. This enabled Guthrie to overtake 12-year-old Russell Metge to take the Under-16 title, while Edward Swayne outmanoeuvred Shamnika Rupasinghe to head off Vincent in the Junior.

The championships were held in conjunction with the Civic Easter, with 10 entries in the Junior and nine in the Under-16. There were several unrated players, and among those with ratings there was a range of nearly 1000 rating points. Arbiter Tim Frost found that separate six-round Swiss events would have been almost impossible to run, so it was agreed that the two events be conducted as a single Swiss. This experience has been followed up with NZCF (see Council Report).

This ensured more even, stronger competition for the top players in both fields, although Guthrie met a visibly stronger field than Metge in the Under-16, and faced the daunting task of beating his older club-mate, Vincent, in the last round to have a chance of taking the title. Guthrie grabbed this chance, while Metge lost to Sinclair.

This last-round win gave Swayne the junior title:

### Swayne, E - Rupasinghe, S

1.d4 Nf6 2.c4 c5 3.d5 b5 4.cxb5 a6 5.f3 g6 6.e4 d6 7.a4 Bg7 8.Na3 0-0 9. Ne2 axb5 10.Nxb5 Nbd7 11.Nec3 Ba6 12.Be3 Qa5 13.Be2 Rfb8 14.0-0 Ne8 15.Qd23 Rb7 16.Rfb1 Qb4 17.Nd1 Qxd2 18.Bxd2 Ne7 19.Nxc7 Rxc7 20.Bxa6 Rxa6 21.Bc3 c4 22.Bxg7 Kxg7 23.Rc1 Ne5 24.Ne3 g5 25.b4 Nd3 26.Rxc4 Rxc4 27.Nxc4 Nxb4 28.Rb1 Nd3 29.a5 Kf6 30.Kf1 Ne5 31.Rb6 Rxb6 32.axb6 Nb7 33.Re2 e6 34.e5+ Ke7 35.exd6+ Nxd6 36.Nxd6 Kxd6 37.dxe6 fxe6 38.Ke3 Kc6 39.Ke4 1-0

1	E SWAYNE	AC	D8	W16	W7	D2	W11	W4	5
2	MB VINCENT	OT	W6	W13	W4	D1	W5	L3	4½
3	DW GUTHRIE	OT	L4	D5	W17	D8	W10	W2	4½
4	SD RUPASINGHE	WE	W3	W9	L2	W6	W7	L1	4
5	M SINCLAIR	WE	D9	D3	W8	W12	L2	W11	4
6	RC METGE	PT	L2	W18	W13	L4	W16	W12	4
7	BJ GILES	NS	W15	W12	L1	W10	L4	D9	3½
8	D GWYNN	GA	D1	W17	L5	L3	D15	W16	3
9	MR BURN	NA	D5	L4	W14	L11	W17	D7	3
10	J TURNBULL	PT	L13	W11	W16	L7	L3	W17	3
11	IR GRUBB	WE	bye	L10	W15	W9	L1	L5	3
12	ZH KINGSTON	KP	W18	L7	W19	L5	W14	L6	3
13	EW PINDUR	HP	W10	L2	L6	L14	bye	W18	3
14	BK CLARK	PE	L16	W15	L9	W13	L12	bye	3
15	L POTROZ	NE	L7	L14	L11	bye	D8	W19	2½
16	S NEILSON	HA	W14	L1	L10	W19	L6	L8	2
17	M NYBERG	WE	W19	L8	L3	W18	L9	L10	2
18	RT CHEW	WE	L12	L6	bye	L17	W19	L13	2
19	D GALEA	UH	L17	bye	L12	L16	L18	L15	1

Guthrie's tough run of pairings started in the first round, and he had to make a comeback after this loss.

### Guthrie, D - Rupasinghe, S

1.d4 Nf6 2.c4 c5 3.d5 b5 4.Nf3 g6 5.d6 Qa5+ 6.Bd2 b4 7.dxe7 Bxe7 8.g3 Bb7 9.Bg2 0-0 10.0-0 d5 11.Ne5 Rd8 12.Qc2 Nbd7 13.Bf4 Nh5 14.Nd2 Rgc8 15.a3 Nxf4 16.gxf4 Nxe5 17.fxe5 Qc7 18.Nf3 dxc4 19.axb4 cxb4 20.e6 fxe6 21.Rxa7 Bc5 22.Raa1 Qf4 23.e3 Qg4 24.h3 0-1

### Guthrie, D - Vincent, M

1.d4 e6 2.c4 Nf6 3. Nf3 b6 4.g3 Ba6 5.b3 d5 6.Bg2 Nbd7 7.cxd5 Nxd5 8.0-0 Rc8 9.Re1 N7f6 10.e4 Nb4 11.Ne5 Bd6 12.a3 Bxe5 13.axb4 Qxd4 14.Qxd4 Bxd4 15.Rxa6 b5 16.Be3 Bxe3 17.Rxe3 0-0 18.Rd3 g5 19.Rxa7 c5 20.bxc5 Rxc5 21.Rc3 Rfc8 22.Rxc5 Rxc5 23.Nd2 Rc2 24.Ra8+ Kg7 25.Rd8 Rcd1+ 26.Bf1 Rd1 27.Rd3 g4 28.Kg2 b4 29.Be2 Re1 30.Re3 h5 31.Nc4 Nd7 32.h3 Ne5 33.hxg4 hxg4 34.Bxg4 Rxe3 35.Nxe3 Nxb3 36.Nc2 Nd2 37.Nxb4 Nxe4 38.Nd3 Kf6 39.Kf3 Nd6 40.Kf4 Ne4 41.Ke4 Nd6+ 42.Kd4 Kg5 43.Bh3 Kf6 44.f4 Nb5 45.Ke3 Nc3 46.Bg4 Nd5+ 47.Kd4 Ne7 48.Ne5 Ne8 49.Bh5 Nd6 50.g4 Ke7 51.Bxf7 1-0

Arthur Pomeroy looks at a game that illustrates the variation in play among juniors: White's tactics earn him a pawn, but his positional play nearly loses him the game. See page 24.

## Auckland Easter Open

Six of the top seven ranked players were on three points going into the fifth and final round of the Easter Open tournament held at Auckland Chess Centre. IM Ortvin Sarapu, Leonard McLaren and Ian McNally all scored wins, to share first place.

The second round brought the first upsets, when Nigel Hopewell sacrificed a whole rook for an unsound kingside attack against Richard Beesley. Having realised his error, Hopewell kept a straight face as he offered a draw. Amid the complications, this was accepted.

In the same round, 16-year-old Daniel Lam almost beat Sarapu, but had to be content with a draw. Lam also managed to hold Hopewell to a draw in the next round, in a seven-hour marathon which was the longest game of the tournament.

Richard Beesley, sharing fourth on 3½ points, won the under 1700 grade prize, while the under 1300 prize was won by Chris Dale and Edith Otene.

ACC thanks Barry Williams for his continued sponsorship and the DoP, Aidan-B. Howard.

One of the winners demonstrates the danger of nicking pawns which open up lines against your own king.

**Mistry, P - McNally, I**

Notes by Ian McNally

1.e4 c5 2.Nf3 d6 3.d4 cxd4 4.Nxd4 Nf6 5.Nc3 a6 6.Be3 e6 7.Qd2 Be7 8.0-0-0 Nc6 9.f4 f3 with g4 to follow is more usual 9...Qc7 10.Be2 Bd7 11.Nb3 Passive. Maybe better is 11.g4 and after 11...Nxd4 12.Bxd4 Bc6 13.Bf3 0-0 14.g5 Nd7 15.h4 with h5 and g6 coming 11...b5 12.Bf3 b4 13.Ne2 Rc8 14.Kb1 a5 15.Nbc1!? Nd4 suggests itself 15...a4 16.g4 too late 16...Na5 17.b3 Bc6 18.Ng3 0-0 19.g5 Nd7 20.Qxb4?! Oh my! Oh my! 20...Rb8 21.Qd2?! If 21.Qc3 d5! The lines are fascinating, work them out for yourself 21...Nc4 22.Qc3 Nxe3 23.Qxe3 Rfc8 You couldn't ask for better value for a b-pawn 24.Rd2? Nb6! Funny how c4 is used 25.Be2 If 25.Ka1 Bf8, then g6 and Bg7 25...d5! 26.Rf1 dxe4 27.Nxe4 Bxe4 28.Qxe4 Nd5 Now the weakness of c3 shows itself

by Craig Blaxall

1	I	MCNALLY	AC	W18	W9	D3	D2	W7	4
2	O	SARAPU	AC	W15	D6	W5	D1	W8	4
3	LJ	MCLAREN	GA	W19	W10	D1	D4	W6	4
4	NH	HOPEWELL	AC	W11	D5	D6	D3	W10	3½
5	R	BEESELEY	HA	W13	D4	L2	W11	W14	3½
6	DKW	LAM	AC	W17	D2	D4	W12	L3	3
7	CS	BLAXALL	AC	D12	D8	W16	W9	L1	3
8	GJ	ION	NS	W16	D7	W12	D10	L2	3
9	P	MISTRY	NS	W20	L1	W21	L7	W17	3
10	TN	CHOO	AC	W14	L3	W17	D8	L4	2½
11	B	WHITAKER	AC	L4	W14	W20	L5	D13	2½
12	CC	DALE	NS	D7	W21	L8	L6	W16	2½
13	EA	OTENE	WT	L5	L18	bye	W15	D11	2½
14	DJ	ANNAN	NS	L10	L11	W19	W18	L5	2
15	GW	MEARS	NS	L2	L16	W18	L13	W20	2
16	P	TURNER	PT	L8	W15	L7	W20	L12	2
17	E	TWEDDEL	WT	L6	W19	L10	W21	L9	2
18	TJJ	TANGI		L1	W13	L15	L14	bye	2
19	MK	MORRISON	NS	L3	L17	L14	bye	W21	2
20	P	FRASER	AC	L9	bye	L11	L16	L15	1
21	P	BECKMANN	AC	bye	L12	L9	L17	L19	1

29...Rxd5 Nothing is any better 29...exd5 30.Qf5 Ba3 31.Rf3 Re8 32.Qd3 if 32.Bd3, Re1 32...Qe7 33.Rh3 Qe4 34.Bf3 Qxd3 35.Nxd3 Re3 36.Bg2 Rbe8 37.Rxe3 Rxe3 38.Bf1 d4! Taking no chances 39.c3 dxc3 40.Kc2 axb3 41.axb3 Bb2 42.Nxb2 cxb2 43.Kxb2 Rf3 44.Ba6 Rxf4 45.Kc3 Kf8 46.b4 Ke7 47.b5 Kd6 48.Bb7 Kc5 49.Bc6 Rh4 0-1

This game is a rook-and-pawn object lesson in turning a passed pawn into a win.

**Sarapu, O - Ion, G**

1.e4 c5 2.Nf3 e6 4.d4 cxd4 4.Nxd4 a6 5.Bd3 Nf6 6.0-0 Qc7 7.Kh1 Be7 8.f4 d6 9.c4 Nc6 10.Nxc6 bxc6 11.Nc3 Bb7 12.Qe2 0-0 13.e5 dxe5 14.fxe5 Nd7 15.Bf4 g6 16.Rae1 c5 17.Qf2 Rab8 18.b3 Bc6 19.Be4 Bxe4 20.Rxe4 Rbd8 21.Re2 Rc8 22.Qg3 Nb8 23.Ne4 Rfd8 24.Nf6+ Bxf6 25.exf6 Qd7 26.Qg5 Qe8 27.Bxb8 Rxb8 28.Qxc5 Rd3 29.h3 Rbd8 30.Qe5 Qc6 31.Kh2 Qd6 32.Qxd6 Rxd6 33.c5 Rc6 34.Rc1 a5 35.g4 g5 36.Kg2 h6 37.Rc4 Kh7 38.Rec2 Rd5 39.a3 Kg6 40.b4 axb4 41.axb4 Kxf6 42.b5 Rc8 43.b6 Rc6 44.Rb4 Rd8 45.b7 Rb8 46.Ra2 Rxc5 47.Ra8 1-0

### STOP STOP PRESS

A review of Ortvin Sarapu's book "Mr Chess" by former NZ Champion David Lynch will appear in the next issue of "NZ Chess".

## Fuji Xerox Otago Easter Open

by Tony Love

John Sutherland included Stephen Lukey among his victims in winning the Fuji Xerox Otago Easter Open. The top-seeded Lukey was trying for his fifth successive win in this event, but flag-fall in the last-round game against Sutherland destroyed his hopes.

This was the most important success so far for Sutherland, showing continued improvement which may be a stepping-stone towards further successes. He scored 5/6, half a point ahead of fellow Otago players Greg Spencer-Smith and second seed Tony Love. Spencer-Smith bounced back with attractive chess after an upset loss in the first round, while Love played solidly to be the only one of the 18 players to complete the tournament unbeaten. The field included players from Hamilton, Nelson, Christchurch and Invercargill.

Dan Dolejs (3½) won the B grade, Dallin Heperi (3½) the C grade, and Moss Wylie (Invercargill) won the upset prize, the Chang Memorial Cup.

**Lukey, S - Sutherland, J**

Notes by Tony Love

1.d4 Nf6 2.c4 c5 3.d5 e5 4.Nc3 d6 The Czech Benoni 5.e4 Be7 6.Bd3 0-0 7.Nf3 Better is 7.Qe2 Ne8 8.g4 with an attack 7...Nbd7 Ne8 is more accurate 8.0-0 Ne8 9.Rb1 g6 10.Qc2 Ng7 11.Bh6 Kh8 With the idea of Nf6-g8 12.b4 b6 13.Na4 A more logical plan is 12.Rb2 intending to double rooks on the b-file 13...Nf6 14.bxc5 bxc5 15.Nxc5!? White sacrifices a piece in

return for two strong central pawns and an attack 15...dxc5 16.Nxe5 Qc7 17Qc3 Nfe8 18.f4? Better is Nc6 18...f5 Black swaps off one of White's powerful central pawns 19.Rbe1 Bf6 20.Rf2 Kg8 21.Rfe2 Nd6 22.Qa3 fxe4 23.Bxe4 Rb8? Better is 23...Nxe4 24.Rxe4 Bf5 25.R4e2 Rae8 24 Nc6 Bd4+ 25.Nxd4 cxd4 26.Bxg6! hxg6 If 26...Ndf5 27 Qf8+ Kxf8 28.Re8++ 27.Re7 Qxe7 28.Rxe7 Ndf5 29.Bxg7 Nxg7 30.h3 On 30.Qxa7, Black draws after 30...Rb1+ 31.Kf2 Rxf4+ 32.Ke2 (32.Kg3 Nh5++) Bg4++ 30...a6? 31.Qd6 Rb1+ 32.Kh2 Bf5 33.Qe5 Nh5 34.Qxd4 Bxh3! 35.gxh3 If 35.Kxh3 Rxf4 threatening 36...Rh1++ 35...Rxf4 36.Qd2 Rff1 37.Qg2 Nf4 38.Qe4 Rb2+ 39.Kg3 Nh5+ 0-1

White lost on time. He is a piece down, but his two passed pawns are compensation and the game should be drawn.

The following game won the upset prize:

**Spencer-Smith, G - Wylie, M**

1.d4 Nf6 2.c4 c5 3.d5 e6 4.Nc3 exd5 5.exd5 d6 6.e4 g6 7.f4 Bg7 8.Bb5+ Nfd7 If Nbd7? 9 c5! 9.a4 0-0 10.Nf3 Na6 11.0-0 Nb4 12.Re1 Nf6 13.h3 b6 14.e5 Ne8 15.e6 fxe6 16.dxe6 Qe7 17.Bxe8 Rxe8 18.f5 Bf6 19.Bf4 Bb7 20.Bxe5 Qg7 20...Bxf3 is another plan 21.Qb3 Bxf3 22.gxf3 gxf5+ 23.Kh2 Kh8 24.f4 Bd4 25.Nb5 Rg8 26.Re2?? Bg1+ 27.Kh1 Qb7+ 0-1

1	JL	SUTHERLAND	OT	W6	W5	L2	W10	W9	W4	5	
2	AJ	LOVE	OT	W11	W12	W1	D9	D4	D3	4½	21½
3	GJ	SPENCER-SMITH	OT	L12	W17	W6	W5	W10	D2	4½	18
4	SG	LUKEY	CA	L13*	W8	W7	W14	D2	L1	3½	21½
5	D	DOLEJS	NE	W17	L1	W11	L3	D6	W14	3½	19½
6	DJN	HEPERI	OT	L1	W18	L3	W12	D5	W13	3½	19
7	HP	BENNETT	HA	W16	D10	L4	D13	D14	W12	3½	16
8	N	CUMMINGS	CA	W15	L4	L14	W17	D13	W9	3½	14½
9	KM	BOYD	OT	W14	W13	D10	D2	L1	L8	3	21
10	GG	HAASE	OT	W18	D7	D9	L1	L3	W16	3	19
11	HR	GOLD	OT	L2	W16	L5	L15	W18	W17	3	14
12	MA	WYLIE	IN	W3	L2	D13	L6	W15	L7	2½	20½
13	RW	MACKWAY-JONES	IN	W4*	L9	D12	D7	D8	L6	2½	19½
14	H	IVOS	CA	L9	W15	W8	L4	D7	L5	2½	19
15	M	BEVIN	OT	L8	L14	W16*	W11	L12	L18	2	14½
16	D	CAMERON	OT	L7	L11	L15*	W18	W17	L10	2	13½
17	A	BATCHELOR	OT	L5	L3	W18	L8	L16	L11	1	17½
18	J	SHAW	NE	L10	L6	L17	L16	L11	W15	1	14½

## Civic Easter

The 1993 Civic Easter was notable for the total absence of players rated over 2000, and only two over 1700. This threw the competition wide open, even moreso when top seed **Tony Jordan** was held to a draw by Ted Frost in round two, and then lost in a time scramble in the next to Lawrence Farrington. Jordan had a tournament best forgotten, acquiring winning positions only to self-destruct in time trouble.

The decisive games came in rounds four and five. **Richard Glover**, the sole leader after three rounds was beaten by **Alan Winfield**. **Ted Frost** shared the lead on 3½ after a win over Rowan Wood, with Glover and Pat Cunningham half a point back.

Winfield beat Frost in a long drawn-out affair to take the outright lead, with Glover, after a win over Cunningham, trailing, half a point behind.

The final round draw pitted Winfield 4½ against Peter King 3½ and Frost 3½ against Glover 4. Winfield had the edge for much of the game but King obtained good counterplay sufficient for a draw. Meanwhile Frost had got the better of Glover to take the runner-up position.

So congratulations to Alan Winfield. Unfortunately, his mantlepiece remains empty as yet there is no trophy! The B grade was split six ways by the players on three points.

Special thanks to arbiter Tim Frost for a job well done.

Here is a nice game with a neat little twist at the end by the Civic Easter Champion.

**Glover, R - Winfield, A**

Notes by Alan Winfield and Anthony Ker  
Pirc Defence

**1.e4 g6 2.d4 Bg7 3.f4 d6 4.Nc3 Nf6 5.Nf3 O-O** This is the Austrian Attack variation. White forms a broad pawn centre which Black hopes to strike at from the flanks. **6.Bd3 Nc6 7.O-O Bg4** Black's last two moves are part of his plan to contest d4 and e5. **8.Be3 Qd7?**

by Rowan Wood

1	AW	WINFIELD	CI	D9	W15	W12	W3	W2	D4	5
2	E	FROST	WE	W13	D14	W15	W10	L1	W3	4½
3	R	GLOVER	PE	W11	W4	W5	L1	W8	L2	4
4	PC	KING	CI	W18	L3	W11	D6	W10	D1	4
5	MJ	POST	WA	W17	W6	L3	L8	W16	W9	4
6	LR	JACKSON	WE	W20	L5	W17	D4	D14	W8	4
7	DM	STRACY	UH	D10	D9	L8	W19	D11	W14	3½
8	PD	CUNNINGHAM	UH	L14	W13	W7	W5	L3	L6	3
9	T	VAN								
		BODEGRAVEN	GA	D1	D7	D16	D14	W17	L5	3
10	LB	FARRINGTON	WE	D7	W16	W14	L2	L4	D11	3
11	CJ	BURNS	WA	L3	W18	L4	W12	D7	D10	3
12	HA	MAHAKI	GA	D16	W19	L1	L11	D15	W20	3
13	JG	GILLESPIE	CI	L2	L8	W18	L16	W20	W19	3
14	AW	JORDAN	CI	W8	D2	L10	D9	D6	L7	2½
15	RJ	WOOD	CI	W19	L1	L2	D17	D12	D16	2½
16	PJ	VOSS	GA	D12	L10	D9	W13	L5	D15	2½
17	RR	PAINO	CI	L5	W20	L6	D15	L9	W18	2½
18	H	GOECKEL	GA	L4	L11	L13	W20	D19	L17	1½
19	P	NEILSON	HA	L15	L12	W20	L7	D18	L13	1½
20	AJ	HOWARD	PE	L6	L17	L19	L18	L13	L12	0

Better is 8... e5! staking a claim to the centre. **9.Qe1 Bxf3 10.Rxf3 Ng4** White has to careful here as Black is threatening to capture on e3 and d4, winning material. **11.e5 Nxe3 12.Qxe3 dxe5 13.dxe5 e6 14.Rd1 Qe7 15.Bb5!** White takes advantage of Black's under-development to break up his queenside pawns. If the knight moves, Rd7 is very strong. **15...Rfd8 16.Bxc6 bxc6 17.Rxd8+?** This surrenders control of the only open file. **17...Rxd8!** Black gets good counterplay if White grabs the a-pawn, with **18...Qb4** and **19...Qd2 18.a3 f6!** White has the choice between a weak e-pawn or allowing Black's bishop into play. **19.Kf1?** The king moves off the same diagonal as the queen but is left exposed and the h-pawn is defenceless. Now Black seizes the initiative. **19...fxe5 20.fxe5 Qh4 21.Rh3** Best otherwise Black follows up with Bh6 and Rd2 with a strong attack. **21...Rf8+ 22.Kg1 Qc4 23.Rf3 Rf5 24.Rxf5 gxf5 25.g3 c5!** Prepares Qd4 and sets a trap for White **26.b3? Qd4 27.Qxd4 cxd4 28.Nb5** Three pawns undefended? **28...Bxe5** That defends two of them. And the third? **29.Nxa7** White bites **29...d3!!** The trap is sprung. If White takes the pawn **30...Bd4+** picks up the knight, any other move the pawn goes on to queen. **0-1**

## Battle of the Sexes

by Bob Smith

To mark Suffragette Year, Waitemata CC held a special "Battle of the Sexes" evening in March. Women and girls from throughout Auckland were invited to form a team to do battle with an evenly-rated team of male Waitemata members.

Eleven females took part, headed by the country's three highest-rated women - Fenella Foster (North Shore), Katrine Metge (Papatoetoe) and current NZ Champion Vivian Smith (Waitemata). The women's team also included Edith Otene and Amy Cater from last year's Olympiad team, and former Olympian Eva Tweddell, all of Waitemata.

The women's team scored well on the top boards, but losses on the bottom three boards gave the men a 7-4 victory.

Individual results (women's team first): F Foster 1 J van Pelt 0, K Metge ½ J Cater ½, V Smith 1 N Easterlow 0, J Ong 0 A Jones 1, E Tweddell 1 R Britten 0, W Ong 0 M Whatarau 1, E Otene 0 R Duckworth 1, A Cater ½ B Korewha ½, A Palmer 0 D Rodokahl 1, A Korewha 0 B Giacaman 1, S Palmer 0 A Authier 1.

## Blackburn Cup

The first two Blackburn Cup matches have taken place, with Papatoetoe and Wanganui emerging as the winners.

In Hamilton, the results on the middle and lower boards carried the day for Papatoetoe (Papatoetoe names first): K Metge 0 G Spain 1, D Storey 1 W Lynn 0, J Turnbull 1 H Bennett 0, F Fuatai 0 M Giles 1, R Hampton ds1 D Goodhall 0, R Metge 1 RV Rossiter 0, P Wallis 0 B Crombie 1, N Pattinson 1 J Broughton 0, I Livaii ½ G Enwright ½, P Turner 1 M Wad 0; Papatoetoe 6½, Hamilton 3½.

Martin Post reports that in the Wanganui vs New Plymouth match, most games contained blunders. Wanganui was without Mark Hall, one of the club's stronger players, and Chris Burns.

Chess

## Winning with the Schliemann

by Mikhail Tseitlin, Maxwell MacMillan  
Chess, Reviewed by Graham Haase

Those who play the Ruy Lopez cannot avoid the sharp response 3...f5, which is now more correctly known as the Jaenisch Gambit. With analysis dating back to 1847, the move strikes at the "Spanish torture" of the Lopez in a way that can give Black effective counterplay against an unprepared opponent. A flurry of tactics often results, in which the weakening of the Black King's field usually ensures that monarch will drift closer to the precipice than the White King.

The book contains a vast amount of theoretical and practical material and includes 10 full illustrative games with successes for both sides. In fairness, the book devotes two-thirds of its content to the move 4 Nc3, which, in the long run, has given Black the most difficulty.

I recommend the book to any serious player whose style is suited to it and to Lopez adherents who wish to avoid unpleasant surprises. What other little-used defences to the Lopez have had a whole book written about them?

This was balanced by New Plymouth's loss of Neil Cruden (to Timaru) and Paul Tuffery (to Canterbury University).

The best game was probably Yung Le's win over Michael Freeman, who gained an early positional advantage. Le decided there was nothing to lose by opening up the position, so he sacrificed the exchange and used superior tactical skills to win. (See page 23)

(Wanganui names first): Y Le 1 M Freeman 0, D Cooper 0 K Okey 1, P Vetharaniam 1 W Goodin 0, M Post 1 M Petrove 0, T Boswell 0 J Connor 1, H Whitlock 1 E Tuffery 0, W Boswell 0 B Bowler 1, G Hoskyn 1 A Schaffer 0, D Bell 0 R Heulin 1, J Stewart 1 W Schaefer 0; Wanganui 6, New Plymouth 4.

## Howick-Pakuranga Latvian Gambit

Roger Nokes, IM Vernon Small and NM Russell Dive were deserving winners of the Howick-Pakuranga Latvian Gambit tournament held at Waipuna Lodge, although a seven-way tie was possible, depending on results in the last round.

After a near upset in the first round, when Merv Morrison let him off with a draw, Dive played well to beat Sarapu. Small did not make the blunders that characterised his play at Congress and seemed to be playing more confidently. Nokes, as aggressive as ever, played his usual brand of sharp attacking chess.

Sarapu had a good tournament, with wins over Stephen Lukey and a fading Paul Garbett in the last round. Garbett did not handle the clock very well and was not at his best. Ewen Green made some uncharacteristic blunders against Stuart and Lukey.

Ortvin Sarapu points out that in the last round Nokes-Hampl was a totally drawn position but Nokes won on time, Hopewell missed perpetual check against Small and lost, and Dive-Dreyer should have been at least a draw for Dreyer, so different results in these games could have spread the multiple tie to seven players.

Paul Spiller says this year the tournament was speeded up to 50/50 to allow more time for the pairings, after struggling last year. As it turned out, lower numbers meant the pairings could be achieved comfortably. Unfortunately, the club will make quite a large financial loss this year. The venue was excellent, but a field of 70 was anticipated to break even, and 59 took part. This may mean a return to the Pakuranga Community Centre next year. Also, not many took advantage of the favourable room rates to stay at the conference centre.

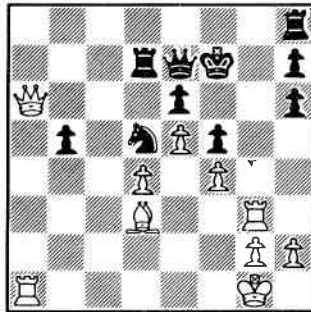
FM JD Sarfati presents some games from the tournament. See page 22 for some more!

### Nokes, R - Lukey, S [C00]

Notes by J D Sarfati

1.e4 e6 2.Nf3 d5 3.e5 c5 4.b4?! cxb4 5.a3 Nc6 6.axb4 Bxb4 7.c3 Be7 8.d4 f6 9.Bd3 f5 Loss of time 10.0-0 Bd7 11.Na3 a6 12.c4 Nb4 13.cxd5 Nxd5 14.Nc4 b5 15.Na5 Nh6 16.Bxb6

by Paul Spiller, Ortvin Sarapu, J D Sarfati  
**gxb6 17.Qc1 Bg5 18.Nxg5 Qxg5 18...hxg5 19.Nb7 Qe7 20.Nd6+ Kf8 21.Ra5 Kg7 22.Qa3** regaining the pawn with great advantage **19.f4 Qg7 20.Rf3 Rc8 21.Qd2 Rc7 22.Nb3 Ra7 23.Nc5 Nc7 24.Rg3 Qe7 25.Qa5 Nd5 26.Nxd7 Rxd7 27.Qxa6 Kf7**



**28.Bxf5! 28.Bxb5+- 28...exf5 29.Qxh6 Ke8 30.Ra8+ Rd8 31.Rg7! Rxa8 32.Qc6+! Kf8 33.Rxe7 Ra1+ 34.Kf2 Nxe7 35.Qf6+** wins the knight, and his queen plus 2 passed pawns will win. Black actually resigned after playing his 30th move 1-0

### Green, E - Lukey, S [A04]

1.e4 e6 2.d3 c5 3.Nf3 Nc6 4.g3 g6 5.Bg2 Bg7 6.0-0 Nge7 7.Nbd2 0-0 8.Re1 d6 9.a4 Rb8 10.c3 a6 11.Nb3 e5 12.d4 exd4?! 13.cxd4 c4 14.Nbd2 b5 15.axb5 axb5 16.Nf1 Nb4 17.Re2 Nd3 18.b3 18.Ne1 18...d5 19.exd5 Nxd5 20.bxc4 bxc4 21.Qc2 Qc7 22.Ne3 Nxe3 23.Bxe3 Bf5 24.Nh4 Bg4 25.Rd2 Rb2 26.Qc3 Rb3 27.Rxd3 27.Qa5 Qxa5 28.Rxa5 Rb1+ 29.Bf1 Bh3 30.Ng2 Ne1!+- or 27.Qc2 Nb4 28.Qc1 c3+- 27...Rxc3 28.Rxc3 Rd8 29.Rac1 Be2 30.Bf1 Bxf1 31.Kxf1 Bxd4 32.Rxc4 Qb7 33.Rxd4? 33.Bxd4 Rxd4 34.Rxd4 Qh1+ 35.Ke2 Qxc1 36.Nf3 with a probable fortress draw 33...Rxd4 34.Bxd4 Qh1+ 0-1

### Green, E - Stuart, P [A04]

1.Nf3 c5 2.g3 b6 3.e4 Bb7 4.d3 g6 5.Bg2 Bg7 6.0-0 d6 7.Nbd2 e6 8.Ne1 Ne7 9.f4 0-0 10.c3 Nbc6 11.Nef3 Qc7 12.g4 Rae8 13.Qe1 f5 14.exf5 exf5 15.Ng5 Nd8 16.Ne6 Nxe6 17.Qxe6+ Kh8 18.Bxb7 Qxb7 19.Nc4? Nc8+- 20.Nxd6 Rxe6 21.Nxb7 Re7 0-1

## Howick-Pakuranga Latvian Gambit

1	RI	NOKES	NS	W24	W19	W5	D3	W12	D2	W6	6	34½
2	RJ	DIVE	CI	D22	W17	W18	W7	W4	D1	W14	6	33
3	VA	SMALL	CA	W36	W18	D48	D1	W8	W9	W5	6	30½
4	O	SARAPU	AC	W21	W31	D7	W28	L2	W12	W20	5½	
5	NH	HOPEWELL	AC	W42	W8	L1	W25	W17	W11	L3	5	32½
6	M	HAMPL	CI	W25	W15	D13	D11	W19	W20	L1	5	31½
7	PW	STUART	NS	W52	W33	D4	L2	W32	W13	D11	5	29½
8	J	TURNBULL	PT	W40	L5	W37	W23*	L3	W17	W18	5	29
9	LJ	MCLAREN	GA	W47	W34	D11	W14	D20	L3	W19	5	28½
10	BJ	GILES	NS	L27	L29	W53	W37	W46	W35	W23	5	21½
11	PR	GREEN	AC	W16	W32	D9	D6	W27	L5	D7	4½	31½
12	SG	LUKEY	CA	W37	W30	D14	W13	L1	L4	W27	4½	30½
13	EM	GREEN	NS	W41	W27	D6	L12	W15	L7	W33	4½	29
14	MP	DREYER	AC	W29	W35	D12	L9	W30	W28	L2	4½	29
15	CJ	STOTT	HP	W44	L6	W52	D31	L13	W32	W28	4½	25
16	V	WILLIAMS	WT	L11	W56	L21	W45	W22	D27	W31	4½	24½
17	GJ	ION	NS	W46	L2	W22	W21	L5	L8	W41	4	29½
18	CS	BLAXALL	AC	W38	L3	L2	W40	W48*	W36	L8	4	28½
19	G	GILL	AC	W39	L1	W51	W34	L6	W21	L9	4	28
20	PA	GARBETT	NS	W54	W23	D28	W48	D9	L6	L4	4	27½
21	E	SWAYNE	PT	L4	W39	W16	L17	W29	L19	W40	4	27½
22	MK	MORRISON	AC	D2	W53	L17	D24	L16	W38	W35	4	26½
23	DJ	BOYD	NS	W50	L20	W40	L8*	W39	W24	L10	4	26
24	GE	TRUNDLE	AC	L1	W50	D29	D22	W41	L23	W39	4	25½
25	J	BOROVSKIS	HP	L6	W43	W33	L5	L36	W51	W34	4	24½
26	P	TURNER	PT	L48	W55	L35	W38	L34	W47	W36	4	19
27	PI	HAIR	NS	W10	L13	W46	W35	L11	D16	L12	3½	28½
28	P	MISTRY	NS	W53	W51	D20	L4	W31	L14	L15	3½	26
29	BK	STEWART	HP	L14	W10	D24	D46	L21	D49	W47	3½	25
30	J	BOJTOR	HP	W43	L12	W42	D32	L14	L33	W49	3½	24½
31	AJ	BOOTH	HP	W56	L4	W58	D15	L28	W34	L16	3½	24
32	BG	EMETT	NS	W58	L11	W38	D30	L7	L15	W46	3½	24
33	EM	ARVIN	HP	W57	L7	L25	W51	D47	W30	L13	3½	22½
34	R	BEESELEY	HA	W45	L9	W47	L19	W26	L31	L25	3	26
35	H	WEBBER	HP	W49	L14	W26	L27	W50	L10	L22	3	25½
36	R	PHILLIPS	PK	L3	L46	W44	W57	W25	L18	L26	3	24½
37	CA	WALKER	WT	L12	W49	L8	L10	W57	L39	W50	3	23
38	N	COTTER	BP	L18	W54	L32	L26	W43	L22	W51	3	22½
39	DJ	ANNAN	NS	L19	L21	W59	W52	L23	W37	L24	3	22
40	DA	VINCENT	AC	L8	bye	L23	L18	W54	W42	L21	3	22
41	EW	PINDUR	HP	L13	L58	W49	W43	L24	W50	L17	3	21
42	TJJ	TANGI	L5	W57	L30	L50	W45	L40	W44	3	20½	
43	W	ONG	HP	L30	L25	W54	L41	L38	W55	W52	3	19½
44	Q	BALL	L15	L47	L36	bye	W53	W54	L42	3	17	
45	D	PHILLIPS	PK	L34	L52	W55	L16	L42	bye	W53	3	16½
46	C	NORMAN	HP	L17	W36	L27	D29	L10	W56	L32	2½	24½
47	J	ONG	HP	L9	W44	L34	W58	D33	L26	L29	2½	23
48	JP	ROBINSON	WT	W26	W59	D3	L20	L18*	-	-	2½	19
49	C	CHILVERS	HP	L35	L37	L41	W55	W58*	D29	L30	2½	19
50	DC	RAWNSLEY	HP	L23	L24	W56	W42	L35	L41	L37	2	22
51	T	GARRATT	BP	W55	L28	L19	L33	W52	L25	L38	2	22
52	WS	PEDDIE	PK	L7	W45	L15	L39	L51	W59	L43	2	21½
53	MJ	LE BROCCO	NS	L28	L22	L10	W59	L44	W57	L45	2	20½
54	M	CARTER	PK	L20	L38	L43	W56	L40	L44	bye	2	18
55	A	CATER	WT	L51	L26	L45	L49	W59	L43	W57	2	16½
56	M	CHILVERS	HP	L31	L16	L50	L54	bye	L46	W59	2	15½
57	D	HARROD	HP	L33	L42	bye	L36	L37	L53	L55	1	16½
58	EA	OTENE	WT	L32	W41	L31	L47	L49*	-	-	1	15
59	J	STANNARD	HP	bye	L48	L39	L53	L55	L52	L56	1	13½

## Regional schoolpupil championships

by Ted Frost

Notable features of the four regional schoolpupil championships held in the first week of the May holidays included the participation of 60 players in the Auckland event, the emergence of girl champions in Auckland and Dunedin, and high placings for the two girl entrants in Wellington.

The Auckland entry included players from as far afield as Northland and the Bay of Plenty, and a number of intermediate school players. Auckland CA secretary Aidan-B Howard sent out invitations to all schools in the northern region and tournament organisers were gratified by the result.

There were 132 entrants in total, including eight girls.

**Auckland Results** 60 players, James Turnbull first with 7½/8, Daniel Lam and Ben Giles second equal with 6/8. Joyce Ong, who is 16, finished fourth equal on 6 and became Auckland schoolgirl champion.

Joyce Ong delivered a cruel mate to Emil Pindur:

**Pindur, E - Ong, J**

1.d4 d5 2.c4 e6 3.Nc3 Nf6 4.Bg5 Be7 5.Nf3 0-0 6.e3 Nbd7 7.Rc1 c6 8.cxd5 exd5 9.Bd3 Re8 10.0-0 h6 11.Bh4 Qc7 12.Bxf6 Nxf6 13.Ne5 Bd6 14.Nb5 Qb8 15.Nxd6 Qxd6 16.Re1 Nd7 17.Nxd7 Bxd7 18.e4 dxe4 19.Rxe4 Rxe4 20.Bxe4 Re8 21.Qd3 Be6 22.b3 Bd5 23.f3 Qf4 24.Re1 Kf8 25.g3 Qd6 26.Kf2 Bxe4 27.fxe4 f6 28.Rd1 Rd8 29.Ke2 Qe6 30.Kf3 h5 31.Ke2 f5 32.e5 e5 33.Qe3 cxd4 34.Rxd4 Rxd4 35.Qxd4 Qa6+ 36.Kf3 Qxa2 37.Qd8+ Kf7 38.Qd7+ Kg6 39.Qxb7 Qxb2 40.Qc6 Kg5 41.Qc1+ Kg6 42.Kf4?? Qf2++ 1-0

**Wellington Results** 15 players, Justin Phillips first with 6/6, Michael Nyberg second on 5, Rosaleen and Teresa Sheehan (Hastings) sharing third with 4. Rosaleen Sheehan won the under-16 prize and Teresa the under-12 prize.

**Canterbury Results** 27 players, Shaun Stephenson (Ashburton) first on 6/6, Lawrence Ng second with 5, Thor Russell and Matthew

McNabb third equal with 4½. Thor and Matthew tied in the under-16 section, with Thor winning on a countback. Hamish Wall and Steven Trainor tied in the intermediate school group, with Hamish winning on a count-back. Cashmere HS won a schools' competition, with Shirley BHS second.

**Otago Results** 30 players, David Guthrie first, Aaron Batchelor, Iafeta Apelu and Rongopai Broughton (Oamaru) all second equal. Batchelor took second place on countback, but it was agreed that there be a play-off later to decide the second representative in the NZ final. Joyce Shanker won the girls' section and is Otago schoolgirl champion.

Wellington DCA is arranging the NZ final in the August holidays and players will be advised of details.

## How many children play?

by Ted Frost

Thousands of New Zealand children are playing chess. Just how many, nobody knows, for most of this activity is not reported. The biggest single event recorded each year is the Hastings district junior tournament, which drew 343 entrants last year, with 54 from one school, Peterhead.

In Auckland, 36 teams from 24 schools and colleges took part in the inter-secondary schools teams competition, and Waitemata CC organised a West Auckland interschools competition in which 136 students played. In Wellington, a small intercollege teams tournament was replaced by a one-day event at Scots College, which attracted 24 teams, from as far away as Palmerston North and Te Aute, where 30-plus players are active.

In the south, the interschools team tournament sponsored by The Press newspaper enjoys evergreen popularity, and in Dunedin last year Dallin Heperi introduced friendly games between an Otago junior team and Forbury School, which was the first in Otago to adopt a chess-in-schools programme.

This scanty information represents just the tip of the school chess iceberg. NZ Chess would like to hear more about these activities.

## Three New Zealanders in Doeberl Cup in Canberra

by Bob Smith

When I decided to contest my very first Australian tournament at Easter, I thought I would be the only Kiwi there. To my surprise, IM Vernon Small and George Trundle also made the trip to Canberra for the 31st Doeberl Cup, one of Australia's premier tournaments. Vernon and I tackled the Open, while George tried his hand in the Major Tournament, restricted to players under 1800.

The Doeberl Cup differs in many ways from the average New Zealand event. For a start, the entry fee was much higher - around \$75 - with free entry for Grandmasters and International Masters. The prize fund was also much higher - about \$12,000 in total, with \$2800 going to the Open winner and \$1500 to the Major winner.

And the number of competitors was far in excess of what our most popular tournaments attract. In all, 162 players took part, 59 in the Open and 103 in the Major.

The last big difference was the much greater average strength of the field. The Open was headed by Australasia's only resident Grandmaster, Ian Rogers (Elo 2565), and included five IMs and four FMs. Also competing were a number of recent eastern bloc emigres, who could be relied upon to provide tough competition.

Playing conditions were good, with the organisers chaining off the top eight boards into an area known locally as "the pig pen." This stopped a common problem of New Zealand tournaments - curious spectators crowding and distracting the leading players. It also provided an aim each round for Open contenders - to get into or stay in "the pig pen."

One player who easily stayed in this elite area all seven rounds was the top seed. In fact, Ian Rogers never moved from board one as he stamped his authority on the event and dropped just half a point in the seven rounds. At a respectful distance a point behind followed D Gedevanishvili (2385) and A Wohl (2280). Second seed Darryl Johansen (2485) was among a bunch half a point further back.

Of the three New Zealanders,

acquitted himself well as usual in scoring a respectable 4½. I managed half a point less, but did get what I went for - tough competition. In fact, I was the only player lucky enough to meet the two top seeds (Rogers and Johansen), who accounted for my two losses.

Pitting my wits against such strong professional players was well worthwhile and good learning experience. I also played top junior John-Paul Wallace (2270), locally known as "the Great White Hope," and scraped a draw.

George Trundle was in with a chance of a grade prize in the Major tournament for some time, but in the final rounds some dangerous Australian juniors knocked him out of contention. Nevertheless, like us all, George thoroughly enjoyed the Doeberl Cup. I may well go back again next year!

This was the best of my three wins:

**Smith, RW - Korda, A**

1.e4 e6 2.d4 d5 3.Nd2 Nf6 4.e5 Nfd7 5.Bd3 c5 6.c3 Nc6 7.Ne2 g6 8.0-0 Bg7 9.Nf3 0-0 10.Bg5 Qb6 11.Qd2 f6 12.exf6 Nxf6 13.Rad1 Bd7 14.h3 Rae8 15.Ne5 Bc8 16.Kh1 cxd4 17.cxd4 Nxe5 18.dxe5 Nd7 19.Be3 Qd8 20.f4 b6 21.b4 a6 22.Nd4 Bb7 23.Qe2 Qe7 24.a3 b5 25.Rc1 Rc8 26.Qg4 Rfe8 27.Rxc8 Bxc8 28.Rc1 Nf8 29.Nb3 Qd8 30.Bd4 Bb7 31.Nc5 Bc8 32.h4 Re7 33.Qg5 Qe8 34.Nb3 Rf7 35.h5 Bd7 36.g3 gxh5 37.Qxh5 Qd8 38.Qg4 Be8 39.Kg2 h5 40.Qg5 Qxg5 41.fxg5 Re7 42.Rc8 Bd7 43.Ra8 Kf7 44.Bc5 Re8 45.Ra7 Rd8 46.Bd6 Ke8 47.Nc5 Zugzwang! Rc8 48.Bxf8 1-0

---

## CLUB NOTICES

\$1.50 per centimetre (15 words) cash with order

**Petone Gambit CC** next 30/30, Sunday, July 4. Phone Mark Noble (04)567-0467.

**Wellington CC** junior coaching sessions, Phone Ted Frost (04)476-4098.

---

# NZCF Standard Rating List for 1-1993

Tournaments rated in this period are the NZ Championship, Reserve Championship, NZ Women's Championship, Major Open, NZ Junior, All-Wellington and All-Canterbury championships, Easter tournaments of Auckland, Civic and Otago, club championships of Civic, Otago, Papatoetoe, Upper Hutt, Wanganui and Wellington, Papatoetoe Invitational, Summer Cups of Civic and Papatoetoe, and Canterbury's Colthart Cup.

Only players belonging to an affiliated club of the NZ Chess Federation are listed. Numbers in brackets refer to the number of games rated this period, an asterix indicates a provisional player.

1	MARTIN BMS	OT	552	2385	62	NIJMAN B	CA	394	( 6 )	1919	200	LUKETINA I	UH	925	( 8 )	1568				
2	SMALL VA	CA	16	( 11 )	2317	63	STEVENSON T	WE	728	( 7 )	1912	201	MAZUR JJ	CI	103	( 5 )	1568			
3	NOKES RJ	NS	178	2294	64	DUNN P	WE	558	( 16 )	1907	202	GENC U	OT	1380		1567				
4	DIVE RJ	CI	459	( 24 )	2292	65	GRAINGER S	WE	1080	( 22 )	1906	203	TURNBULL J	PT	1149	( 30 )	1563			
5	GARBETT PA	NS	2	2289	66	COOPER DJ	WA	350	( 28 )	1904	204	MASTORAKIS T	WE	1276		1562*				
	KER AF	CI	383	( 25 )	2289	67	PARIS PO	NS	1569	1902*	205	COOK F	UH	355	( 8 )	1561				
7	SARFATI JD	WE	251	( 11 )	2259	68	GOODHUE N	PE	665	1896	206	CROMBIE WR	HA	276		1560*				
8	SARAPU O	AC	1	( 16 )	2245		VETHARANIAM PAR	WA	550	( 28 )	1896		SCARF R	AS	1097	( 6 )	1560			
9	SUTTON RJ	CI	3	( 6 )	2239	70	JORDAN AW	CI	511	( 19 )	1895	209	STEWART MI	WT	367		1560			
	WATSON BR	NS	206	2239	71	MARTIN-BUSS B	WT	657	1891		210	FERNANDO T	CI	1369	( 9 )	1558				
11	APTEKAR L	CI	231	2236	72	FOSTER FM	NS	315	( 6 )	1884	211	WINTON M	GA	1479		1555*				
12	GREEN EM	NS	7	2228	73	BLAXALL CS	AC	698	( 16 )	1880	212	FREEMAN BW	OT	175		1554				
13	SMITH RW	WT	88	( 11 )	2219	74	CARTER GS	UH	238	( 9 )	1876	213	WOOD RJ	CI	463	( 39 )	1553			
14	GREEN PR	AC	199	2213		LYNN KW	HA	32	1876		214	BARROW G	WE	595	( 22 )	1543				
15	DREYER MP	AC	460	2205		O'SIOCHRU M	OT	1215	1876		215	LIVAITI I	CA	1057	( 18 )	1543				
16	LUKEY SG	CA	696	( 28 )	2200	77	CONNOR BP	PE	498	1869	216	BENSON C	CA	1087	( 11 )	1541				
17	NOBLE MF	PE	255	( 11 )	2189	78	VINCENT MB	OT	986	( 22 )	1862	217	TAYLOR S	AS	1155		1537			
18	MCLAREN LJ	GA	314	( 5 )	2187	79	BENNETT HP	UH	89	( 17 )	1861	218	PALMER BP	WT	527		1531			
19	SPAIN GA	GA	482	( 11 )	2181	80	SIMS MT	HA	411	1849	219	O'CONNOR JA	WT	1141		1530				
20	LOVE AJ	OT	176	( 22 )	2163	81	RUPASINGHE SD	WE	1027	( 17 )	1837		JACKSON LR	WE	1333	( 30 )	1529			
21	KER CM	PE	503	( 15 )	2124	82	NIJMAN AJ	CA	72	( 5 )	1833		WALLIS P	PT	1104	( 8 )	1529			
22	ANDERSON BR	CA	296	2123	83	COLLINS PW	PE	263	1829		144	RAYNER EP	OT	973	1655		1529			
	STUART PW	NS	5	( 11 )	2123	84	BRIMBLE MT	WA	218	1826	145	HOSKYN GA	WA	79	( 29 )	1651		1527		
	COOPER PR	AC	573	2121	85	MCRAE SA	AC	567	1824		147	STRACY DM	UH	64	( 32 )	1651		1526		
24	LEONHARDT W	NS	11	2115	86	EVANS DJ	NS	1309	1821		148	CASILANG A	AC	1197	1650		1525			
25	WEIR PB	NS	52	2082		GILES ML	HA	1584	1821*		150	BISHOP RF	GA	1175	1649		1524			
26	BOYD KM	OT	395	( 22 )	2076		SINTON PJ	OT	554	( 5 )	1821		DOLEJS D	NE	351	( 6 )	1649		1521	
27	METGE JN	AC	41	( 11 )	2071	89	POHL I	AC	1471	1819*	151	MCCAUGHAN DJ	OT	1216	( 5 )	1647		1520		
28	ABRAHAMSON P	CA	1161	( 17 )	2066	90	PITTS GL	NS	1073	1815	152	BOOTH AJ	HP	259	1646		1519			
29	FREEMAN MR	NP	151	2065	91	LAM DKW	AC	1305	( 5 )	1809		DAVIES G	CA	433	( 22 )	1646		1518		
30	HOPEWELL NH	AC	379	( 5 )	2061	92	CRAIG R	HH	1507	1806*	154	COATES S	CA	1359	( 12 )	1643		1518		
31	ALDRIDGE GJ	CI	405	( 23 )	2059	93	LEZARD G	WE	727	( 1 )	1804	155	AIMERS G	OT	392	( 2 )	1642		1516	
32	MCKENZIE PD	CA	697	( 16 )	2059		NOTLEY DG	HP	377	1804	157	REYNOLDS CP	NS	976	1642		1511			
34	WEEGENAAR DP	CA	272	2044	95	ALDRIDGE AL	CI	412	( 23 )	1801	158	DIXON HA	CI	119	( 15 )	1640		1511		
35	DOWDEN RA	OT	148	( 5 )	2037	96	SMITH VJ	WT	345	( 6 )	1784	159	FROST E	WE	180	( 24 )	1637		1510	
36	ROBINSON JP	WT	526	2035	97	EAST S	PT	1103	1781		160	SHEAD AT	NS	886	1633		1500			
37	PEL W	NS	1337	2009*		GORIS R	GA	1140	1781		161	SHAW G	OT	1221	1632		1500			
38	HART R	NS	507	2006	99	BLAXALL NR	AC	699	( 6 )	1772	238	HAIR PI	NS	993	1631		1499			
39	BARLOW MJ	NS	291	2002		POW K	AS	793	1772		239	PRICE AJ	UH	286	1631		1497			
40	POMEROY AJ	CI	13	( 17 )	2001	101	MATHIESON JS	NS	71	1771		163	BURNS CJ	WA	1300	( 30 )	1630		1497*	
41	VAN DIJK P	CI	391	( 12 )	1997	102	EDWARDS DW	CA	672	( 6 )	1769	164	SHEAD DB	HA	120	1629		1495*		
42	WHEELER B	AC	386	1996	103	SCHWASS MP	CI	414	( 30 )	1764	165	FRASER C	CA	1361	( 12 )	1627		1490		
43	CARPINTER BA	PE	15	1994	104	LACUNZA A	KP	1128	1758		166	BELL CM	UH	242	( 8 )	1625		1489		
44	SPILLER PS	HP	162	1993	105	PATEL D	WT	1516	1756*		168	HANCOCK G	CI	1465	( 9 )	1625		1489		
45	MCNALLY I	AC	673	( 16 )	1983	106	POST MJ	WA	393	( 23 )	1750	170	CHOO TN	AC	1121	( 5 )	1623		1487	
46	SIDNAM GSCK	NS	671	1982*	107	FRANKEL Z	WE	194	( 23 )	1749		OKEY KM	NP	48	1623		1487			
	SUTHERLAND JL	OT	454	( 22 )	1982	108	COMPTON AA	CA	970	( 23 )	1747	171	JACKSON RK	AC	733	1622		1483		
48	ELLIOT DB	NS	977	1974	109	BOYD DJ	NS	700	( 11 )	1745	172	STANTON RA	KP	449	1622		1482			
49	MARNER G	PE	253	( 7 )	1972	110	BOYCE DAL	NE	75	1740	173	BEESLEY R	HA	633	( 5 )	1621		1481		
50	JOHNSTON AJ	CI	53	1970	111	RAWNSLEY LD	AC	232	1738		175	GILL G	AC	913	1614		1480			
51	LE Y	WA	956	( 27 )	1963	112	CATER JE	WT	117	( 11 )	1737		ROSSITER PE	HA	1367	1614*		1476*		
52	HAASE GG	OT	28	( 22 )	1959	113	BANKS GB	PT	659	( 24 )	1729	177	DRAKE AS	UH	227	( 9 )	1609		1476*	
53	GIBBONS RE	AC	37	1958		JEFFERIES A	CA	1002	1729		178	KUMAR S	WE	1331	1609		1474			
54	MONRAD PG	PE	600	( 18 )	1953	115	CHIN HY	OT	1379	1727*	179	ABURN S	WE	644	( 16 )	1608		1471		
	MOOI KO	WE	1162	( 19 )	1953	116	ADAMS JM	CA	126	1722	180	MACKWAY-JONES RA	IN	1068	( 5 )	1607		1468		
56	SPENCER-SMITH GJ	OT	440	( 11 )	1948	117	MCPHERSON A	CI	1385	( 15 )	1719	181	DAVIS JM	GA	1302	1603		1465		
57	WASTNEY S	CA	830	( 16 )	1944	118	BRUNTON DM	PT	83	1716	182	SHAW M	CA	1193	1602*		1460			
58	TUFFERY PB	NP	961	1939	119	CRUDEN N	NP	1239	1715		183	BUI S M	PT	1203	( 24 )	1600		1459		
59	HAWKES PD	GA	101	( 11 )	1922	120	VECOVSKY MP	OT	1092	1712	184	BOJTOR J	HP	302	( 11 )	1595		1458		
60	CASTRICUM M	OT	1486	1921*	121	WHITEHOUSE C	WT	353	1706		185	PRICE S	HP	1119	1594		1456			
61	ION GJ	NS	301	( 5 )	1920	122	METGE KM	PT	309	( 18 )	1700	186	REID A	UH	926	( 7 )	1589		1453	
												187	WONG K	WE	1261	1583		1448		
												188	HUDSON S	CA	1176	( 10 )	1582		1443	
												189	ALLSOBROOK AJR	UH	283	( 8 )	1581		1440	
													RENTNER G	CA	1362	( 5 )	1581		1440*	
												191	GLOISTEIN B	CA	54	1580		1439		
													SNELSON PR	NS	328	1580		1439		
												193	FUATAI F	PT	1231	( 18 )	1578		1437	
													THOMSON R	AC	1513	1578*		1434		
												195	BELL DI	WA	168	( 17 )	1577		1432	
												196	CAPPER DS	CI	243	( 31 )	1576		1432	
												197	STOTT CJ	HP	979	1571		1431		
												198	HOFFMANN F	WE	1213	1570		1428*		
												199	KING PC	CI	268	( 31 )	1569		1425	



278	CARADOC-DAVIES B	OT	1374	1425*	355	KEELING RL	AS	1096	( 6 )	1278	431	ONG W	HP	1478	1133*	482	MICHAELSON M	HH	1313	942
279	SIMMONS JR	CI	469 (19)	1424	356	FULLER R	PT	999 (18)	1275	432	WAGSTAFF GC	NS	854	1129	483	LANG M	IN	1564	932*	
280	RUSSEL T	CA	1360 ( 6 )	1423		BEVIN M	OT	1561 ( 6 )	1274	433	EVERITT TH	OT	1219 ( 2 )	1128	484	JOHNSTON N	OT	1375	919*	
281	CAMERON I	PT	1394 (10)	1421	358	BLACKMAN J	WE	1332	1274*	434	MORSE D	HA	1515	1124*	485	SCOTT D	PT	1504	918*	
282	RYNE T	IN	1069	1420	359	EADES D	NS	1338	1273	435	LUI E	HA	1259	1121*	486	FRASER P	AC	1641 ( 4 )	917*	
283	FARRINGTON LB	WE	1164 (24)	1419	360	BELZ A	CI	1382	1269*	436	DOOLEY S	WE	1303 ( 9 )	1117	487	GOBBI M	WE	1484	910*	
	REWETI M	UH	1353 ( 7 )	1416	361	STOREY K	PT	1269 (18)	1267	437	TRAN J	PT	1289	1116		MULLANE SJ	NS	1573	910*	
	STONE RG	OT	902 ( 4 )	1416	362	CROSLAND GW	WT	898	1265	438	BOYD M	OT	1408 ( 1 )	1113		VINCENT DAJ	UH	1192 ( 1 )	910*	
285	KAY JB	CI	56 (20)	1414		BARTOCCI KDF	AC	136	1263	439	HENRY R	WE	1358	1112*	490	BRIDGER S	UH	1423 ( 9 )	908*	
286	HARVEY M	OT	1487	1413		GILES BJ	NS	1469 (17)	1263	440	HALL D	NS	1339	1108	491	HOWARD AJ	GA	1615 ( 6 )	900*	
287	KELLY S	CA	651 ( 6 )	1412	365	KUIPERS K	NS	1570	1263*	441	CLARK BK	PE	1498 ( 5 )	1107*	492	BOLTON C	NP	1335	886*	
288	NICHOLSON B	WA	922	1410		STIMPSON J	PT	1100 ( 8 )	1262*	442	CATER A	WT	1314 ( 6 )	1100		COLEMAN G	PT	1274 ( 8 )	886	
289	GRUBB IR	WE	1616 ( 5 )	1409*	367	VAN GERVEN CJ	GA	1448 (10)	1262*		ONG K	HP	1477	1100*	494	RUDLAND M	PT	1355 ( 8 )	880	
290	FREDERIKSON J	UH	1214 (20)	1408		WALKER CA	WT	708	1261	444	POTROZ L	NE	1373 ( 5 )	1099	495	MCLENNAN T	CI	1384	879*	
291	GIBB JL	OT	551 ( 3 )	1406	369	WINSHIP A	WT	1348	1261*	445	DAVIS A	PT	1398	1090	496	SALLAI MA	AC	1037	867*	
	WINSOR BM	NS	365	1406	370	VAN ZOOMEREN J	OT	901 ( 3 )	1260		HAY V	OT	198	1090	497	BECKMANN P	AC	1588 ( 4 )	864*	
293	HURLEY P	IN	1070	1404	371	MCLEAN G	IN	1511	1259*	447	RUNGE K	OT	1377	1083*	498	MACLEAN CG	NS	1341	851*	
294	IVANCIC S	PE	1491	1402*	372	BURROWS GL	OT	1488 ( 4 )	1256	448	KINGSTON ZH	WP	1357 (18)	1080	499	KING N	PT	1323	816*	
295	GRIFFIN P	HA	1250	1399*	373	GORDON R	UH	1429	1256*		LAWSON S	WT	1345	1080*	500	CHEW RT	WE	1594 ( 5 )	810*	
296	WONG DL	CI	1386 ( 4 )	1395	374	STREET S	WA	1406	1251*	450	VAN DER BERG G	KP	1543	1079*	501	GIANOTTI P	UH	1583 ( 8 )	797*	
297	BARTOLOMEI F	CA	1638 ( 6 )	1394*	375	BURROWS GL	AC	1576	1249*	451	GALES AE	NS	693	1073	502	THOMSON G	WT	1520	785*	
298	CARTWRIGHT JR	AS	1159	1392	376	GORDON R	HH	1169	1249	452	JONES A	WE	1518	1066*	503	HAYES R	KP	1138	762*	
299	COLLINS L	PT	988 (18)	1387	377	ROEVEN G	WA	578	1248	453	O'MALLEY S	WT	1501 ( 7 )	1062*	504	KNIGHTON P	OT	1381	745*	
300	THELWALL IR	OT	1005 ( 4 )	1385	378	LAKE A	CA	1579 ( 6 )	1244*	454	DAWSON N	IN	1318	1055*	505	RANGINUI W	PT	1399	676*	
301	BANNISTER C	OT	895	1379	379	PINDUR EW	HP	1470 ( 5 )	1243*		GOSNELL ME	KP	1457	1055*	506	LOCKE T	PT	1506	647*	
302	PEDRESCHI M	CI	1546 ( 9 )	1375*	381	LYNCH P	PT	1249	1240	456	KUPENGA F	PT	1647 ( 8 )	1053*	507	MACKINTOSH WE	OT	1225	612*	
303	SHARDY Z	CI	233 (31)	1374	382	SPINKS O	CA	1639 ( 5 )	1240*	457	BURNS G	KP	1541	1052*	508	GALEA D	UH	1499 ( 5 )	532*	
304	MCCALL A	IN	1064	1373	383	LINDSAY P	IN	1291	1238		KRINKEL DC	NS	1571	1052*						
	PAINO RR	CI	1111 (11)	1373		CLARK R	CA	904	1237	459	SMITH A	IN	1294	1051						
306	RENOUF T	PT	1107 (10)	1372	385	FOLEY B	PT	1396 ( 8 )	1236	460	SULTAN W	AC	1490	1042*						
307	GILMARTIN J	CI	1409 ( 9 )	1370	386	IBELL M	NS	1209	1236*	461	NEILSON S	HA	1247 ( 6 )	1039						
	MCINTOSH J	OT	1044	1370	387	ONG J	HP	1476	1234*	462	RENNIE T	WE	1502 ( 7 )	1032*						
309	BENNETT ST	AS	1156	1369		CROMPTON D	AC	1489	1233*	463	LINS RJ	OT	1411	1026*						
310	MORRISON MK	NS	74 (15)	1366	390	JONES GM	NS	312	1231	465	TIDEY D	OT	1412	1026*						
	SOUTHGATE B	CI	929 (15)	1366		MCCARTHY PD	PT	621	1231		SYMONS A	NS	1572	1022*						
312	PRESTON JM	IN	107	1364	391	PETI L	PT	532 ( 8 )	1231	467	WOODHAMS TD	NS	1242	1022						
313	STEWART J	WA	1508	1363*	392	SARFAS E	PT	997	1229		BELL M	PT	1646 ( 8 )	1020*						
314	SCHURR R	KP	1009	1361	393	MANNING JW	NS	1319 (26)	1228	469	DURBIN J	UH	1600 (10)	1014*						
315	BURN MR	GA	1466 (16)	1360	394	GREEVERS LP	NS	304	1224	470	BARKER A	HH	1315	999						
	GONIN RCE	OT	452 ( 4 )	1360	395	NORMAN C	HP	1566	1222*	471	DUNN A	PT	1393	992*						
317	ABRAHAMSON P	OT	1401	1356*	396	CAMERON D	OT	134 ( 9 )	1219	472	PIRIE B	KP	1351	980*						
318	WHITAKER B	AC	1011 ( 5 )	1353	397	GREER KD	OT	1316 ( 2 )	1218		SHAW R	KP	1171	980						
319	ANDRIOLIC F	PE	1275	1351	398	GUERIN GB	CA	738 (10)	1217	474	ALLPRESS K	WT	1519	975*						
320	MCDUGALL W	AC	758	1347	399	BRIDGER M	UH	248	1214	475	NYBERG M	WE	1451 ( 6 )	966						
321	ROSIE E	CA	1046	1345	400	COURTNEY H	GA	1054	1213	476	CLAYTON D	PT	1505	961*						
	VINCENT DA	AC	1414 (11)	1345	401	CROSBIE P	PT	998 (10)	1213	477	SMITH G	WA	1405	958						
323	BUNCE C	IN	1067	1344		HUDEPOHL H	UH	1126	1213	478	FOREMAN A	WE	1542	948*						
324	TURNER P	PT	1270 (23)	1343		ATKINSON J	CA	1327 ( 5 )	1210*	479	CASTEL N	CA	1363	947*						
325	TAYLOR S	HA	1257	1341		BATCHELOR A	OT	1580 ( 9 )	1210*		LAWTON D	WA	1510	947*						
326	MACDONALD JR	AS	1088 (10)	1337		JOHNS DP	NS	1234	1210		STEPHENS RC	UH	1264 ( 8 )	947						
327	STEVENS BS	OT	1183 ( 3 )	1336		MILLS G	KP	788 (12)	1210											
328	TUFFERY E	NP	964	1334	405	GROOTHUIZEN P	PT	1271	1206											
329	BELL A	PT	1645 ( 8 )	1333*	406	WINTER W	UH	285 ( 9 )	1202											
330	PATTON AJ	OT	905 ( 4 )	1332	407	BACKHOUSE C	UH	1354 ( 9 )	1197											
331	GILLESPIE JG	CI	974 (30)	1330	408	ANNAN DJ	NS	1378 ( 5 )	1191											
332	WRIGHT C	CA	1099	1327	409	MCGURK A	IN	1071	1190											
333	REID DM	OT	1182 ( 3 )	1324	410	MEADER A	WT	1349	1188*											
334	GUY M	CA	1328	1322	411	OLSEN P	PT	1268 (10)	1187											
	SCHULTZ AE	WE	818	1322	412	WEBBER CH	UH	267 ( 7 )	1185											
336	DALE CL	NS	1468 ( 5 )	1321*	413	NEWMAN B	UH	187 ( 9 )	1183											
337	RAWNSLEY DC	HP	250	1316		TWEDDEL E	WT	806 ( 5 )	1183											
	WARD CL	WA	582	1316	415	MCLEAN W	HH	1336	1180*											
	WEBBER H	HP	1310	1316*	416	HOLMES L	WA	1404	1173*											
340	MILLAR B	WT	1344	1313*	417	VAN DER MEY PF	NS	431	1169											
341	ANDERSON G	CI	334 ( 8 )	1312	418	SMITH S	PT	1397	1166*											
	NG L	AS	1154 ( 6 )	1312	419	BOEKHOLT E	UH	1308 ( 9 )	1163											
343	GARLAND M	WT	354	1310		MORRISON R	PT	1568 ( 8 )	1163*											
344	NEILSON P	HA	1167 ( 6 )	1305	421	GOECKEL H	GA	1614 ( 6 )	1155*											
345	KWOK A	OT	1043	1302		VECOVSKY C	OT	1366	1155*											
346	HARNETT PM	CI	1383 (20)	1299	423	OTENE EA	WT	816 (10)	1153											
347	MICHAEL A	PT	1567 (18)	1294	424	ESCOTT FG	NS	1279	1143*											
348	PATSTON G	CA	1180 ( 6 )	1293	425	SHAW J	NE	1618 ( 6 )	1142*											
349	WILLIAMS V	WT	1347	1290*		WATSON G	WA	1509	1142*											
350	GWYNN D	GA	1492 ( 6 )	1288*	427	MAKOARE D	OT	1402	1141*											
351	MILLS M	PT	981	1287	428	HARRIS K	UH	287	1138											
352	SUTTON B	HH	1387	1280*	429	PALMER JC	HA	1372	1136*											
353	BOWLER RP	NP	288	1278	430	SULLIVAN GJ	UH	772 (19)	1135											

Club Key

AS	Ashburton
AC	Auckland Chess Centre
CA	Canterbury
CI	Civic
GA	Gambit
HA	Hamilton
HP	Howick-Pakuranga
HH	Hastings and Havelock North
IN	Invercargill
KP	Kapiti
NE	Nelson (Gambit)
NP	New Plymouth
NS	North Shore
OT	Otago
PT	Papatoetoe
PE	Petone (Gambit)
UH	Upper Hutt
WT	Waitemata
WA	Wanganui
WE	Wellington

NZCF Rapid Rating List for 1-1993

Tournaments rated in this period are the NZ Rapid Championship, Alekhine Memorial, Latvian Gambit, open tournaments of Kapiti, Otago and Petone, club tournaments of Canterbury, Kapiti, North Shore and Wellington.

1	SMALL VA	CA	16 ( 7 )	2363	18	LOVE AJ	OT	176 (24)	2171
2	MARTIN BMS	OT	552	2311	19	WANSTINK R	OT	9 ( 5 )	2163
3	NOKES RI</								

35	WEIR PB	NS	52	(16)	2005	112	CHOO TN	AC	1121	1675	191	WILSON C	PT	962	1473	266	SHEEHAN R	HH	1497	(15)	1271		
36	ABRAHAMSON P	CA	1161	(11)	1995	113	POWELL RA	WE	873	1674		WONG K	WE	1261	(5)	1473	267	GORDON R	HH	1169		1270	
37	ELLIOT DB	NS	977		1967	114	BELL CM	WE	242	1672		ARVIN EM	HP	889	(7)	1466	268	MAHAKI HA	GA	1430		1268*	
38	PITTS GL	NS	1073	(6)	1962*		LEZARD G	WE	727	(11)	1672		CLARK BK	PE	1498	(11)	1466*	269	KRINKEL DC	NS	1571		1267*
39	JORDAN AW	CI	511		1958	116	LUSHKOTT V	KP	1420		1671*		HEPERI DJN	OT	1004	(8)	1459	270	KINGSTON ZH	KP	1357	(10)	1260
40	NIJMAN B	CA	394	(5)	1949	117	VECOVSKY MP	OT	1092		1666		JORDAN PJ	CA	1177	(5)	1459		NYBERG M	WE	1451	(16)	1260
41	SPILLER PS	HP	162	(11)	1948	118	HAIR PI	NS	993	(20)	1665		DALE CL	NS	1468	(8)	1457*	272	DOOLEY S	WE	1303	(16)	1252
42	FENERIDIS A	WE	6		1946		STOTT CJ	HP	979	(7)	1665		DUFFIELD T	OT	1173	(5)	1457	273	WITHERS MI	UH	1434		1242*
43	CUMMINGS N	CA	1617	(5)	1945*	120	BARROW G	WE	595	(17)	1664		PEDRESCH M	CI	1546	(5)	1455*	274	HARNETT PM	CI	1383	(11)	1241
44	GOODHUE N	PE	665		1941	121	DAVIS JM	GA	1302	(11)	1663		BOWLER RP	NP	288		1453		MASON K	KP	1544	(6)	1241*
45	VAN DIJK P	CI	391		1938	122	BISHOP RF	GA	1175		1653		EDMONDS M	CA	1365	(5)	1453	276	WAGSTAFF GC	NS	854	(6)	1232
46	COOPER DJ	WA	350		1935		MAZUR JJ	CI	103	(6)	1653		GILES BJ	NS	1469	(26)	1451	277	ANNAN DJ	NS	1378	(22)	1227
47	HAASE GG	OT	28	(5)	1931	124	BOOTH AJ	HP	259	(7)	1650		STONE RG	OT	902	(13)	1443	278	WHITAKER R	AC	1011		1224
48	DUNN P	WE	558	(4)	1928	125	COOK F	UH	355		1647		PRICE S	HP	1119		1438	279	MCRAE J	PT	532		1218
49	MONRAD PG	PE	600	(6)	1926	126	JOHNSON Q	CA	632	(10)	1638		EADES D	NS	1338	(16)	1435	280	KIRKMAN M	AC	1012		1217*
50	TUFFERY PB	NP	961	(11)	1918	127	ALDRIDGE AL	CI	412	(5)	1636		ROY M	PE	1556		1431*	281	RAWNSLEY DC	HP	250	(7)	1209
51	MOOI KO	WE	1162	(6)	1913	128	MCCAUGHAN DJ	OT	1216	(8)	1635		TRUNDLE GE	GA	45	(7)	1428		WARD D	KP	1432		1209
52	WASTNEY S	CA	830	(16)	1910		WILLIAMS V	WT	1347	(7)	1635*		KUIPERS K	NS	1570	(15)	1426	283	BRIDGES M	UH	248		1208
53	CONNOR BP	PE	498		1909	130	JACKSON LR	WE	1333	(23)	1626		BENNETT RH	WT	965		1424	284	JONES GM	NS	312	(22)	1207
54	VENKATRAMAN B	CI	1306		1908	131	LAMBOURNE J	OT	903	(5)	1623		BOROVSKIS J	HP	387	(7)	1422	285	MILLS G	KP	788	(6)	1206
55	WALDEN GJ	HP	96		1904		MCINTOSH GJ	KP	1137	(6)	1623*		ESTERLOW NL	WT	1148		1422	286	RENNIE T	WE	1502	(10)	1204
56	SUTHERLAND JL	OT	454	(24)	1899		SHEAD DB	HA	120		1623		VAN DEN HOVEN H	CA	1597	(5)	1422*	287	GOSNELL ME	KP	1457	(4)	1195*
57	HART R	NS	507	(7)	1897	134	LANGLEY DB	NS	692	(14)	1616		BROUGHTON J	HA	944	(7)	1418	288	SHAW P	WE	1277		1192*
58	CRAIG R	HH	1507		1896*	135	SWAYNE E	AC	1143	(18)	1606		NORMAN C	HP	1566	(7)	1418*	289	PARKER S	KP	1458		1186*
59	COLLINS PW	PE	263		1892	136	COATES S	CA	1359	(5)	1605		MATHIESON JS	NS	71		1412*	290	WARD M	HA	1587	(7)	1183*
60	ION GJ	NS	301	(28)	1882	137	OKEY KM	NP	48		1598		MCDONOGALL W	AC	758	(7)	1409	291	CHEW RT	WE	1594	(15)	1173
61	STEVENSON T	WE	728	(11)	1881	138	KING PC	CI	268	(11)	1596		MORRISON MK	NS	74	(32)	1409	292	BURNS G	KP	1541	(8)	1171*
62	POHL I	AC	1471		1880*	139	JACKSON RK	AC	733	(7)	1592		SULLIVAN GE	NS	1206	(13)	1407		SYMONS A	NS	1572		1171*
63	BENNETT HP	HA	89	(18)	1871	140	MORSE D	HA	1515	(7)	1589*		TAYLOR DC	PT	1503	(7)	1405*	294	WILLIAMS B	OT	1090	(5)	1170*
64	MARNER G	PE	253	(22)	1870	141	BOJTOR J	HP	302	(14)	1588		VAN DER MEY PF	NS	431	(15)	1405	295	VAN STRATEN D	NS	1607	(8)	1166*
65	NOTLEY DG	HP	377	(7)	1859	142	LILLIS D	CI	1010	(11)	1582		VINCENT DA	AC	1414	(6)	1405*		WHITE SJ	UH	949		1166
66	O'BOYLE D	UH	662		1851	143	WINFIELD AW	CI	845	(5)	1572		KAY JB	CI	56		1401	297	BECKMANN P	AC	1588	(7)	1162*
67	THOMSON R	AC	1513		1848*	144	MEARS GW	NS	92	(21)	1569		MACDONALD JR	AS	1088	(11)	1401	298	OTENE EA	WT	816	(4)	1154
69	VINCENT MB	OT	986	(19)	1848	145	MILNE DJO	NS	862	(15)	1567		GIBB JL	OT	551	(5)	1398	299	LE BROCC MJ	NS	1586	(29)	1152
70	NIJMAN AJ	CA	72	(5)	1834		WEBBER H	HP	1310	(7)	1567		CONNER JW	NP	1464		1392	300	BOEKHOLT E	UH	1308		1146*
71	BLAXALL NR	AC	699	(7)	1833	147	BELL DI	WA	168		1565		VAN GERVEN CJ	GA	1448		1388*	301	HARRIS P	WA	1493	(14)	1138*
72	SCHWASS MP	CI	414	(11)	1829	148	WYLIE MW	IN	1265	(15)	1564		KELLY S	CA	651	(5)	1387	302	JURY B	PE	1629	(5)	1135*
73	SIDNAM GSCK	NS	671	(7)	1827*	149	CUNNINGHAM PD	UH	323	(16)	1563		WILLIAMS K	HP	1472	(7)	1385*	303	ONG K	HP	1477		1129*
74	SINTON PJ	OT	554	(8)	1824	150	IVOS H	CA	1596	(5)	1561*		PINDUR EW	HP	1470	(7)	1384*		SUTTON R	HH	1552	(11)	1129
75	SINCLAIR M	WE	1364	(11)	1820	151	SPENCER-SMITH PA	NS	357	(15)	1560		SCHULTZ AE	WE	818		1382	305	WALSH C	NS	1608	(9)	1127*
76	RUPASINGHE SD	WE	1027		1819	152	DAGNINO F	HP	1346		1559*		BALDWIN P	HP	322		1381	306	PATROZ L	NE	1373		1126*
77	MISTRY P	NS	1467	(16)	1818		MCINTOSH IH	OT	760		1559		PAINO RR	CI	1111	(6)	1377	307	CHILVERS C	HP	1480	(6)	1119*
78	GLOVER R	PE	1200		1806	154	ALLSOBROOK AJR	UH	283		1557		VAN BODEGRAVEN T	GA	909		1373	308	MULLANE SJ	NS	1573		1113*
79	HEREMIA D	UH	1352		1801*	155	FROST E	KP	30	(5)	1556		VAN DER BERG G	KP	1543	(8)	1372*	309	CHILVERS M	HP	1481	(6)	1111*
81	DOLEJS D	PT	1103		1797		BEESELEY R	HA	633	(14)	1554		NEILSON P	HA	1167		1371	310	SULLIVAN GJ	UH	772		1107
82	FRANKEL Z	NE	351		1790	157	ANDRIOLIC F	PE	1275		1553		WINSOR BM	NS	365		1371	311	ONG W	HP	1478	(7)	1105*
	GRAINGER S	WE	194	(16)	1784	158	BOAG P	CA	1095	(5)	1550		WATT R	OT	1591	(8)	1368*		STAPLES B	HP	1563		1105*
	SIMS MT	WE	1080	(6)	1784	160	PHILLIPS J	WE	1320		1548		WHIBLEY J	KP	1131	(10)	1362	313	CROMBIE M	HA	1549		1100*
85	CATER JE	UH	411		1784	161	ROBERTS EN	KP	955	(5)	1544		GREVERS LP	NS	304	(15)	1360	314	PROCTOR P	WE	1593	(6)	1078*
86	BRIMBLE MT	WT	117	(11)	1782	162	METGE RC	PT	1246	(13)	1542		CLARKSON RD	OT	796	(8)	1356	315	LARKMAN BDI	NS	1595	(14)	1068*
87	KUMAR S	WA	218		1772	163	SMITH C	HH	1018	(11)	1534*		SARFAS E	CI	1319		1355	316	APELU I	OT	1592	(5)	1067*
	METGE KM	WE	1331		1769	164	SNELSON PR	NS	328	(9)	1530		BEN-ISRAEL L	GA	685	(11)	1352	317	COX WR	KP	1456	(10)	1063
89	RAWNSLEY LD	PT	309		1769	165	EDWARDS RE	OT	618		1527		GARLAND M	WT	354	(7)	1344	318	PETERS P	KP	1460		1047*
90	BOYD DJ	AC	232		1756		HOFFMANN F	WE	1213	(11)	1527		GUERIN GB	CA	738	(11)	1343	319	HORSBURGH R	WE	1565		1046*
91	WINTON M	NS	700	(39)	1752	167	BURNS CJ	WA	1300	(5)	1524		JULIAN C	CA	1643	(5)	1339*	320	SCHAFFER A	NP	1550		1035*
92	TAYLOR R	GA	1479		1747*		HAMPTON R	PT	375		1524		HARVEY M	OT	1487	(8)	1337	321	FOREMAN A	WE	1542		1014*
93	GORIS R	HP	339		1740	169	CAPPER DS	CI	243	(16)	1518		PATTON AJ	OT	905	(8)	1334	322	FERRARO F	NS	1589	(22)	1011
94	EVANS DJ	NS	1309	(9)	1731	170	SIMMONS JR	CI	469	(11)	1516		WALKER CA	WT	708	(7)	1334	323	GALEA D	UH	1499		1010*
	WOOD RJ	CI	463	(22)	1731	171	BILLING J	NP	483		1514		BERKELEY R	OT	1488	(8)	1329	324	LANG M	IN	1564	(5)	1004*
96	POST MJ	WA	393	(16)	1726		SHEAD AT	NS	886	(6)	1514		BERRY M	NA	1557		1328*	325	IRONS B	UH	1429		988*
97	STANTON RA	WA	449		1725	173	COCKCROFT JM	NS	1241		1510		GOODIN W	NP	1548		1328*	326	DIMOCK A	CA	1644	(5)	987*
98	ABURN S	KP	449		1725	174	SHAW M	CA	1193		1505*		ROWELL T	OT	1590	(8)	1328*	327	WOODHAMS TD	NS	1242		978*
99	EMETT BG	WE	644	(6)	1716	175	SHAW G	OT	1221	(5)	1501		TURNER P	PT	1270	(7)	1328	328	BURN MR	GA	1466		972*
100	CRUDEN N	NS	855	(22)	1715	176	REWETT M	UH	1353		1499		CAMERON D	OT	134	(13)	1326	329	PETERS P	KP	1634	(5)	967*
	GILES ML	NP	1239		1711	177	FARRINGTON LB	WE	1164	(22)	1497		EDMONDS LG	HP	361		1325	330	MISA A	AC	1041		954
102	HULL K	HA	1584	(7)	1711*		HILL M	KP	1426	(5)	1497		SOUTHGATE B	CI	929		1325	331	STEWART J	WA	1508		953*
103	FUATAI F	NP	485		1706*	179	FREDERIKSON J	UH	1214		1491		WITHERS MA	UH	1433		1324*	332	HILL D	KP	1635	(4)	938*
	LARK D	PT	1231		1704*	180	RAMSAY W	CI	59		1486		BEATTIE D	HP	1195		1321*	333	HOWARD AJ	GA	1615		933*
105	LACUNZA A	HP	204		1704	181	JOHNS DP	NS	1234	(9)	1484	</											

## New Zealand News

NZ Chess reported in April that Otago CC's long-serving former president **Arthur Patton** has been elected a life member of the club. At the time it wasn't known that Arthur is back in administrative harness - as treasurer of Otago CC.

**NM Ewen Green** has been elected president of the Auckland Chess Association, succeeding **IM Ortvin Sarapu**. The association's annual meeting decided to actively pursue holding another international tournament similar to the Netway, hopefully in March-April of next year.

Ashburton CC has appointed two school liaison officers, with secretary **Ken Pow** [(03)308-3655] looking after secondary school contacts and **John Beach** [(03)308-6696] joining him to look after interested primary schools.

Ashburton CC has won the **annual quadrangular tournament** played in Dunedin. Otago CC fields a team without its strongest players, and a Dunedin "Chess-for-fun" team replaced Timaru, which was unable to compete this year.

Scores: Ashburton 11½, Otago 11, Invercargill 10½, Chess-for-fun 3.

### Auckland

Nigel Metge scored a string of wins to take the Auckland Chess Centre **Summer Cup** from a strong field with an average rating of 2020. Metge dropped only half a point, in a fairly quick last-round draw with Sarapu. However, he almost had one hiccup when he lost his queen for two minor pieces against John Robinson. Not being used to watching TV so early on a Monday night, Metge played on...and won!

A grade: Metge 6½/7, Sarapu 5, C Blaxall 4½, M Dreyer 3½, M Steadman 3, G Sidnam 2½, B Williams and J Robinson 1½.

B grade: E Swayne 5½/7, T Choo and Latimer 5, K Ward 4.

C grade: Nuval and Annakkage 5½/7, P Young 5 3.

### Papatoetoe

Iki Livaii, who was 13th-ranked in the field, won the Papatoetoe **Summer Cup** with 7½/8, conceding the one draw to Russell Metge. Livaii 7½, P Wallis 6, G Banks, F Fuatai and R Metge 5½, K Metge, M Buis, D Taylor and P Turner 5.

### Canterbury

Top-rated Brian Nijman went through the **Canterbury Quickplay** tournament unbeaten, to win the 30/30 event with 4½/5. Nick Cummings, who has played previously in Great Britain, scored better than his previous results to finish second, on 4, followed by Scott Wastney on 3½ and Dean Edwards, Arie Nijman, Peter Boag and Hrvoje Ivos on 3. Boag and Ivos shared the under 1600 rating prize. Another newcomer in the field was Francois Bartolomei, who has played previously in France.

Wastney drew his game with top seed Stephen Lukey in the **Colthart Cup** competition, and won the tournament when Lukey suffered a surprise loss to Alistair Compton in the last round. Wastney beat Brian Nijman in the last round.

Scores: Wastney 5½/6, Compton 5, Lukey 4½, B Nijman, C Fraser, C Benson 4.

### Otago

Greg Spencer-Smith and Kendall Boyd have finished first equal in Otago Chess Club's first competition of the year. They each scored 5/6 in the early-season warm-up event, the **Cleland Trophy** tournament.

Otago CC plays its **club championships** in a series of graded tournaments, and the first round of the championship has been won by defending champion Tony Love, with 3/4. The event is played to a strict timetable, and no-one in the top group was able to complete all games.

Other winners: BC Lambourne, CJ Gibb and D Reid, DA Batchelor.

### Invercargill

An overdue note of activities from the deep south. The **1992 championship A Grade** was won by Robert Mackway-Jones 10½/12 from Moss Wylie 9½ and Tom Pyne 9. The B Grade was won by Gary McLean and the C Grade by Eric Forsyth. This was the first year that the championships have been split into grades with promotion/relegation and appeared to work reasonably well. This year has started well with four new members joining the club and a 5 round swiss event being held. Robert Mackway-Jones and Moss Wylie were first equal on 4½/5 with John Preston third, half a point behind.

### Petone Gambit

The first **rapid tournament** of the year in the Wellington area was held by Petone Gambit, with a modest entry of a dozen. Jonathan Sarfati started the season well, with 6/6, followed by Philip Monrad 4, and Rowan Wood 3½. Wood and Ross Jackson won grade prizes.

There was a stronger field of 24 in Petone's second 30/30, Sarfati repeating his success with a picket fence of 6. Russell Dive was second on 5 (loss to Sarfati). Grant Lezard 4½ won one grade prize, and Ben Jury and Ricardo Paino 2½ shared the other grade prize.

Petone has more open 30/30s on July 3 and September 4.

Mark Noble demolished the competition in the recently completed **club championship**. He conceded just the one draw to Arthur Pomeroy to retain the title. Pomeroy and Phil Monrad 5½ were a full two points behind, their penchant for draws, five and four respectively, contributing to the margin.

Rowan Wood and Gavin Marner 5 were next, Wood's surprising performance winning him the B grade title. After losing to Noble in the first round, he was undefeated in the next seven.

Scores: Noble 7½/8, Monrad and Pomeroy 5½, Wood and Marner 5, R Jackson and F Andriolic 3½, P Connor and T Quinn 3, C Greenwood 2, C Ker 1½, S Ivancic 0. The last two withdrew after four rounds.

### Waitemata

Waitemata CC has now completed its first two tournaments of the year. The **Summer Cup** was comfortably held by defending champion Bob Smith with 5½/6, ahead of the next two highest-rated players, John Robinson and John van Pelt, who both scored 4.

The concurrent under-1400 Tournament was won by promising junior Verner Williams, who dropped a single draw to Gary Crosland in scoring 5½/6.

The biggest surprise was the placing of 14th seed Steve Lawson, who upset several higher-ranked players on the way to finishing second equal. He scored 4½, with another junior, Dipan Patel.

The club's annual **half-hour tournament** was also won by Bob Smith, who scored an eight-point picket fence to regain the trophy he surprisingly lost last year after 18 consecutive victories. Clear second was John van Pelt on 6, followed by John Robinson, Neville Easterlow, Dennis Morrow and Edith Otene on 5½.

Waitemata has scheduled its 16th annual **Waitakere Trust Open** for July 3 and 4, with prize money in excess of \$2200. There will be \$500 for the Open winner, \$250 for the B grade winner, and special prizes for women and juniors. Enquiries to Bob Smith, 2 Autumn Avenue, Glen Eden, Auckland 7 [tel (09)818-4113].

### Hawkes Bay

Te Aute College has hosted a **Hawkes Bay secondary schools tournament**. Although the response from the secondary schools was poor, seven players travelled from Hato Paoro College in Feilding and several young players from Hastings CC entered. The tournament was won by 11-year-old Teresa Sheehan (St Mary's School), with her older sister Rosalene and Regan Lloyd (Te Aute) second equal.

## Games

Selected analysed games by any grade of player will be a regular feature in NZ Chess.

Starting the selection is the following game from the recent Howick-Pakuranga Latvian Gambit.

Morrison, M - Dive, RJ

Round 1

Notes by O Sarapu

1.d4 Nf6 2.Bg5!? Merv Morrison at 86 is playing modern lines. GM Julian Hodgson won the 1992 British Championship with this Trompovsy Opening. Robert Wade also used it in the World Seniors. 2...e6 3.Nf3 h6 4.Bxf6 Qxf6 5.e4 d6 6.Bd3 e5 7.c3 Nc6 8.d5 Ne7 9.Nbd2 a6 10.h3 This is inviting the thrust g7-g5-g4. Any other move is better! 10...g5! 11.Qe2 Ng6 12.g3 h5 The N.Z. Rapid Chess Champion develops a strong initiative on the kingside. 13.0-0-0 Bh6 14.Kb1 Safer here is the natural move Ne1, to play on with g4, h4. 14...g4 15.hxg4 Bxg4 16.Qe1?! Morrison's piece "sacrifice" cannot be called a "tactical sacrifice," and also it is not a "positional sacrifice". But you could call it a "psychological sacrifice". The idea is to give the Rapid Champion a false security feeling, and while he rests on his laurels, Merv sneaks in his counterplay. 16...Bxf3 17.Nxf3 Qxf3 18.c4! h4 Russell continues his kingside play. 19.Qb4!! Qxf2? And the champion plays carelessly on. 20.Qxb7 0-0 21.Qxc7 Rab8 22.Bc2! You cannot trap Merv with this kind of trick! Black now has some problems. 22...Rfd8? 23.Rhf1!! Dive now cannot play Qxg3 as 24.Qxf7+ Kh8; 25.Rg1 wins at least the piece back for Black. 23...hxg3 24.Rxf2 gxf2 25.Qa7!! Excellently refuting Black's play. Being Merv Morrison's coach, I give him 10 out of 10 for this move! 25...Rdc8 26.Qxf2 Rxc4 27.Re1! To defend his bishop with Re2. 27...Rbc8 28.Re2 Nf4 This looks more dangerous than it really is. Now White starts his attack on the Black king. Black's defences crumble on the kingside. 29.Qg1+! Kf8 30.Rh2 Bg7 31.Qb6! The double attack on a6 and d6 gives Black also a material advantage. 31...Ke7 32.Qxa6 Nd3 33.Qa7+ R8c7 34.Qg1 Bh6 35.b3 Rc3 36.Rxh6! After

36.Bxd3 Rcl+ 37.Qxc1 Rxc1+ 38.Kb2 would give Russell some chances to draw. 36...Rxc2 37.Qg5+ Kd7 He cannot play his king on the back rank, as then Rh8+ wins quickly. 38.Qf5+ Instead, White could use the famous "steps combination" here. 38.Qg4+ Ke7 39.Qh4+ Kd7 40.Qh3+ and Qxd3. 38...Ke7 39.Qf6+ Kd7 40.Qxf7+ Kc8 He still cannot run away his "unhappy king"! 41.Qe8+ Kb7 42.Qb5+ Ka7 43.Qa5+?! Naturally, Qxd3 wins immediately. Morrison still had only two or three minutes on his clock. So he decided to give Black perpetual check and a valuable half-point to Russell Dive. 43...Kb7 44.Qb5+ Ka7 45.Qa5+ Kb7 46.Qb5+ draw If readers think that my notes to this game are one-sided, they are 100 percent right. But it was intentional!

The following games, also from the Latvian Gambit tournament, were annotated by FM JD Sarfati.

Mistry, P - Dreyer, M [A52]

1.d4 Nf6 2.c4 e5 3.dxe5 Ng4 4.Nf3 Bc5 5.e3 Nc6 6.Nc3 0-0 7.Be2 Ngxe5 8.Nxe5 Nxe5 9.0-0 Re8 10.a3 a5 11.b3 Ra6 12.Qc2 Rg6 13.f4 Ng4 14.Bxg4?! Rxc4 15.Nd1?! Qh4 16.Qf2 Qe7 17.Qf3 d6 18.Bd2 Bf5 19.Nf2 Rg6 20.Rfe1 Be4 21.Nxe4 Qxe4 22.Qxe4 Rxe4 23.Kf1 Bb6 24.Re2 Rge6 25.Rae1 f5?! 25...a4 26.g3? 26.a4+ 26...a4!+ 27.b4 Rxc4 28.Rc1 Ree4 29.Kf2 Kf7 30.Bc3 d5 31.Bb2 d4! 32.exd4 Bxd4+ 33.Kf3 Bxb2 34.Rxc4 Rxc4 35.Rxb2 Rc3+ 36.Kf2 Rxa3 37.Rc2 c6 38.b5 cxb5 39.Rc7+ Kg6 40.Rxb7 Rb3 41.Ra7 a3 0-1

Garbett, P - McLaren, L [A01]

1.b3 e5 2.Bb2 Nc6 3.e3 Nf6 4.Bb5 d6 5.d4 exd4 6.exd4 Bg4 7.Nf3 Qe7+ 8.Kf1 a6 9.Bxc6+ bxc6 10.Nc3 Qd7 11.h3 Bxf3 12.Qxf3 Be7 13.g3 13.d5 13...0-0 14.Kg2 d5 15.Ne2?! Ne4 16.Nf4 f5 17.h4 a5 18.a3 18.a4 18...Bd6 19.Rad1 a4! 20.b4 Bxf4 21.Qxf4 Rae8 -+ 22.Rhe1 Re6 23.f3 Rg6! 24.h5 24.fxe4 fxe4 25.Qd2 (25.Qe5 Rf5+) Rf3+ 24...Rxc3+ 25.Kh2 Rg5 Scoresheet stops here. A pity. ½-½

Sarapu, O - Garbett, P [A80]

1.d4 f5 2.Bg5 h6 3.Bh4 g5 4.e3 Nf6 5.Bg3 d6 6.Bd3 Bg7 7.c3 A bit slow 7...e6 8.Qb3 Qe7 9.f3 Nc6 10.Nd2 e5 11.d5 Nd8 12.e4 Nh5 12...f4 13.Bf2 g4 13.Ne2 Nf4 14.Bxf4 exf4 15.0-0-0 a6 [Why?] 16.exf5 Nf7 17.Rde1 Ne5 18.Be4 Nd7 Rather artificial knight moves 19.Qc2 0-0 20.g4! Now White will retain his extra pawn, which is a powerful protected passed pawn 20... Nc5 21.h4 Nxe4 22.Nxe4 Bf6 23.hxg5 hxg5 24.Rh6 Black is a pawn down and helpless against a king-side invasion by White's major pieces 1-0

Garbett, P - Hampl, M [C45]

1.e4 e5 2.Nf3 Nc6 3.d4 exd4 4.Nxd4 Bc5 5.Nb3 Bb6 6.a4 a5 7.Nc3 Qf6 8.Qe2 Nge7 9.Be3 Bxe3 10.Qxe3 0-0 11.0-0-0 d6 12.Nd4 Bd7 13.Ndb5 Rac8 14.f4 Rfe8 15.Qf3 Nb4 16.e5?! White should have completed his development first with 16.Bc4+= 16...Qg6 17.Rd2 dxe5 18.fxe5 Bc6 19.Qf2 Ned5 Now White's e5 pawn is weak, not strong 20.Bc4 Rxe5 21.Rf1 21.Rhd1 Nxc3 22.Rd8+ Re8+ 21...Rf8 22.Ne2? Ne3+ 23.Nf4 Qf6 24.Bb3 Nxf1 25.Qxf1 Rf5 Scoresheet stops 0-1

Lukey, S - Sarapu, O [D34]

1.d4 Nf6 2.c4 e6 3.Nf3 d5 4.g3 c5 5.cxd5 exd5 6.Bg2 Nc6 7.Nc3 cxd4 8.Nxd4 Be7 9.0-0 0-0 10.Bf4 Bg4 11.h3 Be6 12.Rc1 Rc8 13.Ncb5 a6 14.Nxc6 Rxc6 14...bxc6 15.Na7+- 15.Nd4 Rxc1 16.Qxc1 Qb6 17.Be3 Rc8 18.Nf5 Qb4 19.Nxe7+ Qxe7 20.Qd2 Ne4 21.Qd3 Qb4 22.Bd4 Qc4 23.f4? Qxd3 24.exd3 Nxc3 25.Re1 Rc2 26.Bf3 h6 27.Re5 Nf5 28.Bf2 Ne7 29.f5 Nxf5 30.Bxd5 Rxb2? 30...Bxd5+ and neither the bishop vs knight nor the opposite bishopss give White drawing chances 31.Be4? 31.Rxe6 fxe6 32.Bxe6+ Kf8 33.Bxf5 Rxa2 34.d4 b5 35.d5 and the passed pawn supported by the bishop pair will make life difficult for Black 31...Nd6 32.Bg2 Rxa2 33.Bc5 Nf5 34.d4 Nh4 35.Bxb7 a5 36.Be4 White lost on time 36...g6 0-1

Stott, C - Mistry, P [D45]

1.d4 Nf6 2.Nf3 d5 3.c4 c6 4.e3 e6 5.Nc3 Be7 6.cxd5?! Frees Black's game 6...exd5 7.Bd3 0-0 8.0-0 Bd6 8...Bg4 (Black should develop,

when he will at least equalise) 9.Re1 Re8 10.e4 dxe4 11.Nxe4 Nxe4 12.Rxe4 Rxe4 13.Bxe4 Bg4 14.Qd3 g6 15.Bh6 Nd7 16.Re1 Bf8 17.Bg5 f6 18.Bxg6?! hxg6? 18...fxg5 19.Bxh7+ Kh8 20.Qg6 Be7 seems to hold 19.Qxg6+ Bg7 19...Kh8 20.Re4+- 20.Bh6 Qf8 21.Qxg4 Qf7 1-0

The next game is from the Wanganui vs New Plymouth Blackburn Cup match played in April.

Yung Le won the Wanganui CC championship last year by 3½ points from his nearest rival, out of a maximum of 16 points. His background is actually Chinese chess, not "western" chess. He came to New Zealand out of Vietnamese forced labour camps, taking his chances as a "boat person" after escaping from Vietnam on the 10th attempt. To get out of Vietnam, one needed gold as a means of exchange, which Yung gained by taking on all comers in Chinese chess!

After learning the "proper" chess in 1980 and playing for a couple of years, Yung played in the 1982 Upper Hutt 40-40 beating Peter Stuart for 3rd equal placing. His deep thinking tactical style of game is well illustrated here.

Freeman, M - Le, Y

Notes by Martin Post, Dave Capper

and Yung Le

1.d4 Nf6 2.c4 e6 3.Nc3 Bb4 4.e3 c5 5.Nge2 o-o 6.a3 Bxc3 7.Nxc3 b6 8.d5 The game now takes on a Benoni appearance. This is as per Metge-Small, NZ Championship 1992/3 except that Black has taken the knight on e3 and thus White has no eventual kingside knight. 8...d6 9.Bd3 exd5 10.cxd5 Re8 11.o-o Nbd7 12.f4 White tries for a kingside attack. However e4 has not been played by White (to prepare a thematic Benoni e5) and this gives Black fully equal chances) 12...Bb7?! There aren't a lot of squares for the bishop to be developed on. Black's position, however, is better than it looks. 13.Qf3 a6 14 Threatening the thematic Benoni b5 for Black. Note that because Black has already played b6 White cannot prevent b5 by a5, a typical positional "bind" against Black in the Benoni. 14.a4 Qc7 15.Bc4? Surely b3 would have been better? 15...Re7 Yung plays to

grab the e4 square for his knight. Other plans would not work: b5 takes too long to prepare. **16.Bd2?** White should play e4 here to deny Black counterplay. Black would then take considerable time to rearrange his pieces to prepare b5. **16...Rae8 17.b3** to defend against e4 after moving the bishop back to d3! **17...Qc8** Gives the queen more active white squares after the coming exchange sacrifice if the knight at d7 moves. **18.Rae1? Ne4!** Yung has analysed this deeply, and it is clear that Black gets considerable play for the exchange plus a pawn. **19.Nxe4 Rxe4 20.Bd3 Bxd5 21.Bxe4 Bxe4 22.Qg3 Qc6 23.Bc3 f6 24.Rf2** The black bishop on e4 has an almost eternal look about it! White tries to double rooks for counterplay. **24...Qd5?!** After the game Yung thought that d5 would have been better here, but Yung is more than Michael's equal in open positions as the text will show. **25.Rd2 Qxb3 26.Rxd6 Qxc3 27.Rxd7 f5 28.Ra7? Rc7** would have saved time compared to the text, better still Red1. Rc7 allows **28...Re8 29.Qh4 Qd 20.Rd2 Qd6!** while Red1 leads to **28...Bc6 29.Rc7 bxa4 30.Rd4?!** (low cunning!) but **30...g6! 31.Rd6 (Rxa4 Rxe3!) Qa1+ 32.Kf2 Bb5!** and now surprisingly **Rxg6+** does not work on account of **33...Kh8!** while Black still threatens mate. Tactical chess at its best. **28...b5** If **26...Re6 29.Rd1**. The Black pawns have started their roll. Meanwhile, to double rooks on the seventh, White must lose time by making an escape square for his king. **29.h3 b4? 30.Rd1 Kh8 31.Rdd7 Rg8 32.Rac7 b3 33.Rxg7** Perhaps Michael was expecting **Rxg7** here but **33...Qxg7! 34.Rxg7 Rxg7 35.Qh4 Rxg2+ 36.Kf1 b2** and White, realising that after a few more moves the Black king can get to h2 to avoid perpetual, resigned.

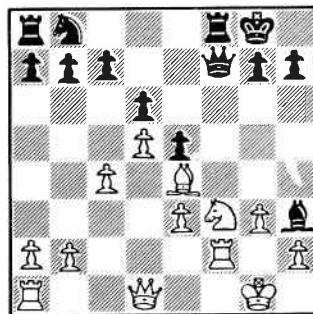
Later analysis proved White could have drawn with **33.Qg5!** since there is no way to stop perpetual on d8 and f6 after the text swapoff (time pressure?). This means, of course, that Yung uncharacteristically did not analyse deeply enough when he played **29...b4**. The d-file should have been blocked with **29...Bd3 30.Rd1 c4 31.Rc7 b4!** to ensure the win in absolute terms as **32.Rxd3 cxd3 33.Rxc3 bxc3** gives Black unstoppable pawns.

The next game is one more from the NZ Junior that illustrates the variation in play among juniors: White's tactics earn him a pawn, but his positional play nearly loses him the game.

**E. Swayne - M. Vincent**

Notes by Arthur Pomeroy

**1.d4 e6 2.c4 f5 3.g3 Nf6 4.Bg2 Bb4 5.Bd2 Be7 6.Nc3 O-O 7.d5?** a mistake which only seems to gain space, while actually losing control of central squares **7...e5** not **7...f4?!** **8.gf ef 9.e5! 8.e4 fe4** why not **8...d6**, keeping up the fight for e4? Black's initiative is only temporary after this **9.Ne4 Ne4 10.Be4 Bc5 11.Nf3 Qf6 11...d6!** is much better; here the Queen is exposed **12.O-O d6 13.Bg5 Qf7 14.Be3 Be3 15.fe3 Bh3 16.Rf2**



**16...Nd7?** **16...h6** is needed **17.Bh7 Kh8 18.Qc2 Qh5 19.Qg6 Qg6 19...Bg4! 20.Bg6 Rf6 21.Ng5 Bg4 22.Be2 Raf8 23.Ne4 Raf1! 23...Rf2 24.Nf2 Be2 25.b3 a5 26.Re1 Bh5 27.Bd1** White is losing the thread; he should be fighting for the central white squares **27...Bg6 28.Bg4 Nc5 29.Kg2? Rf2 30.Kf2 Nd3 31.Ke2 Nel 32.Ke1 Bb1** now White is in danger of losing due to his bad bishop **33.a3 Ba2 34.Kd2 Bb3 35.Kc3 Ba4 36.Be8 b6 37.Kd3 Kh7 38.Ke4 Bc2 39.Kf3 Bd3 40.Ba6 g5?!** closing the kingside prematurely, though it would be hard to make progress **41 e4 1/2-1/2**

**CLASSIFIED**

**\$1.50 per centimetre (15 words) cash with order**

Want a particular chess book? Or some books or magazines to sell? Or are you in the market to buy or sell a computer?

Use NZ Chess Classifieds.

GM Ian Rogers was the clear winner of the Jakarta Zonal tournament in which FM Anthony Ker played early this year. Other scores were IM D Johansen and FM C Barus 8; IM R Rodriguez and B Bancod 7; GM U Adianto and FM X Yang 6½; IM E Handoko, H Tu, FM L Hsu, D Juswanto, IM R Gunawan and E Carag 5½; A Wohl 5; T Mok 4½; FM A Ker and H Nishimurra 4; T Reilly 3½; M Kamal 2½; D Norris 1½.

Darryl Johansen played this very nice game against Hong Kong's Xian Yang in the second round.

**Yang, X - Johansen, D**

Sicilian Defence

**1.e4 c5 2.Nf3 Nc6 3.d4 cxd4 4.Nxd4 Nf6 5.Nc3 d6 6.Bg5 e6 7.Qd2 a6 8.0-0 h6 9.Bf4 Bd7 10.Nxc6 Bxc6 11.f3 d5 12.Qe1 Bb4 13.a3 Ba5 14.e5 Bc7 15.Bd2 Nd7 16.f4 Nc5 17.Be3 Qe7 18.Ne2 Bb5 19.Nd4 Bxf1 20.Rxf1 Ne4 21.Qe2 0-0 22.Qg4 Kh7 23.Qh3 Rac8 24.g4 Bb6 25.Kb1 Rc4 26.g5 Rfe8 27.gxh6 g6 28.f5 exf5 29.Nxf5 Qe6 30.Bxb6 Nc3+!! 31.bxc3 Qxb6+ 32.Kc1 Rxc3 33.Ne3 R8c7 34.Rf3 d4 35.e6 f5 36.Qh4 Qb3 37.Rd2 dxe3 38.Rxe3 Rxc2+ 39.Kd1 Rxd2+ 0-1**

The next game is from the North Shore Summer Cup.

**Blaxall, C - Shead, A**

Grunfeld Defence

Notes by Peter Weir

**1.d4 Nf6 2.c4 g6 3.Nc3 d5 4.cxd5 Nxd5 5.e4 Nxc3 6.bxc3 c5 7.Be3 Bg7 8.Nf3 Nc6 9.d5?!** An interesting but speculative exchange sacrifice. Usual is **9.Rc1 9...Bxc3+ 10.Bd2 Bxa1 11.Qxa1 Nd4 12.Nxd4 cxd4 13.Qxd4 f6** Better than **13...0-0 14.Bc3 f6 15.e5** with pressure **14.Bb5+ 14.Bc4** allows the strong reply **14...e5 14...Bd7 15.Be4 Qc7 16.0-0 Rc8** Not **16...0-0** which runs into **17.Qxa7**, when **17...Qxc4** fails to **18.Rc1 17.Bb3 Bb5 18.Re1 b6?** Black must try to develop the Rh8. Best was therefore **16...Qc5 17.Qb2 Bc4** to permit **0-0**. An exchange of queens only helps Black **19.e5!** Eyeing the uncastled king **19...fxe5** If **19...f5** White can choose between the positional **20.e6**, cutting Black's position in two, or the attacking **20.d6 Qb7 (20...Qc5 21.Qh4 wins) 21.e6! 20.Rxe5 Qc5 21.Qh4 Qc7 21...Qc1+**

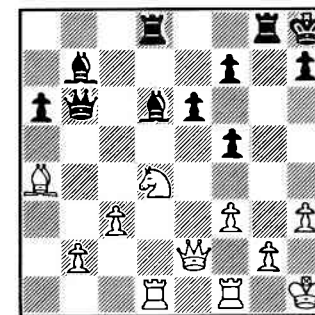
**22.Re1 22.d6!** To activate the Bb3 among other attacking ideas **22...Qxd6 23.Re6 Qd7 24...Qc7 25.Bb4 24.Bg5** Not **25.Bb4?? Qxe6! 26.Bxe6 Re1++ 24...h6 25.h3!** A strong quiet move which emphasises Black's difficulties. **25.Rxe7+** fails to **Qxe7**; **26 Bxe7** and **Rc1** mating. Now there are no more back rank threats **25...Rh7 26.Rxg6 Qb7** Not **26...Rh8 27.Qxh6! Rf8 28.Qxf8+ Kxf8 29.Rg8++ 27.Rg8+ Kd7 28.Qg4+ Kd6 29.Qe6+ Kc5 30.Rxc8+ Kb4 30.Qe1+ 1-0 31.Ka3 32.Bc1++**

**Sarapu, O - Dreyer, M**

ACC Summer Cup 1993

Notes by Craig Blaxall

**1.e4 e6 2.d4 d5 3.Nd2 c5 4.exd5 Qxd5** This is not a hot line for Black because he soon falls behind in development, but several world champions have played it **5.Nf3 cxd4 6.Be4 Qd6 7.0-0 Nf6 8.Nb3 Nc6 9.Nbxd4 Nxd4 10.Nxd4 a6** Note Black's lack of development **11.c3 11.Bb3 Be7 12.c3 0-0 13.Qf3** favouring White, Jansa-Petrosian 1977 **11...Qc7 12.Qe2 Bd6 13.h3 0-0 14.Bg5 b5 15. Bb3 Bb7 16.Bxf6 gxf6 17.Rad1** Threatening **18.Nxe6 fxe6 19.Qxe6 Kh8 20.Qxd6 17...Kh8 18.Bc2 f5 19.Kh1 Rg8 20.f3 Rad8 21.a4 bxa4 22.Bxa4 Qb6?** Black has a good advantage. He has a strong bishop pair and the open g file aiming at White's king. However, this move is a mistake. After 21 minutes' thought, Ortvin plays a brilliant move which forces a draw.



**23.Nc6! Bxc6** If **23...Rd7? 24.Rxd6! Rxd6 25.Qe5+ Rg7 26.Qxd6 24.Rxd6! Rxd6 25.Qe5+ Rg7 26.Qxd6 Qxb2! 27.Qd8+ Rg8 28.Qf6+ Rg7 29.Qd8+ Rg8 30.Qf6+ Rg7 31.Qd8+ 1/2-1/2**

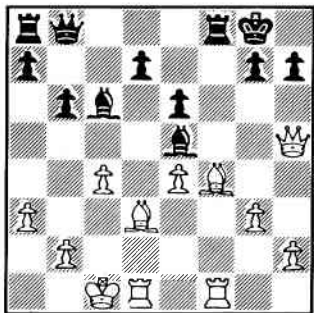
## International News

Ex-world champion Anatoly Karpov demonstrated his class by easily winning this year's category 16 Dortmund round-robin tournament. He started the event at blitz pace with 3/3 before being well beaten by a fine display of skill by French junior Joel Lautier, who was celebrating his 20th birthday. After this Karpov proceeded to win the remainder of his games, save for a quick last-round draw with against his compatriot, rising star Vladimir Kramnik.

Kramnik generally played solid and unambitious chess, winning just one game and drawing the remainder. Nevertheless, it was enough to share second with German Christian Lutz. Lutz, the lowest-rated player in the all-grandmaster competition, played solidly and above expectations. He lost to Karpov, but won good games against Serper of Uzbekistan and Lobron.

### Lutz, C - Karpov, A Queens Indian

1.d4 Nf6 2.c4 e6 3.Nf3 b6 4.a3 Ba6 5.Qc2 Bb7 6.Nc3 c5 7.e4 cxd4 8.Nxd4 Nc6 9.Nxc6 Bxc6 10.Bf4 Nh5 11.Be3 Qb8 12.g3 f5 13.0-0-0 Nf6 14.Bd3 Qb7 15.f3 fxe4 16.Nxe4 Nxe4 17.fxe4 Bd6 18.Rhf1 Be5 19.Bf4 Qb8 20.Qe2 0-0 21.Qh5



21...Rxf4! 22.gxf4 Bxf4+ 23.Kb1 Qe5 24.Qxe5 Bxe5 25.h3 a5 26.b3 d6 27.Rd2 Be8 28.Kc2 Bg6 29.Rdf2 Re8 30.Kd1 Bd4 31.Ra2 Rc5 32.Rg2 Rh5 33.Rf3 Be8 34.Kc2 g6 35.Be2 Re5 36.Bd3 Kg7 37.Rg4 g5 38.Rf1 Bc5 39.Kb2 Bg6 40.h4 gxh4 41.Rxh4 Rg5

42.Rh2 Rg3 43.Bc2 Bd4+ 44.Kc1 a4 45.bxa4 Rxa3 46.Kd2 Rg3 47.Bd3 Rg5 48.Rfh1 Be5 49.Rh3 Bd4 50.R3h2 Rg3 51.Rf1 Bf6 52.Rb1 Bg5+ 53.Kc2 Be3 54.Ra1 Bg1 55.Rd2 Kf6 56.a5 bxa5 57. Rxa5 Bc5 58.Ra1 Ke5 59.Rf1 Bg1 60.Rdd1 Be3 61.Rf8 Rg2+ 62.Kb3 Rh2 63.Bb1 Bh5 64.Re1 Bf2 65.Rf1 Bc5 66.Re1 Be2 67.Ba2 Rh3+ 68.Kb2 Ba3+ 69.Ka1 Bd3 70.Bb1 Bb4 71.Rc1 Bd2 72.Rd1 Bc3+ 73.Ka2 Bxc4+ 74.Ka3 Be2 0-1

### Lautier, J - Karpov, A English

1.c4 Nf6 2.Nc3 e5 3.Nf3 Nc6 4.g3 Bb4 5.Nd5 e4 6.Nh4 0-0 7.Bg2 Re8 8.0-0 d6 9.d3 exd3 10.Qxd3 Nxd5 11.exd5 Ne5 12.Qc2 Bc5 13.b3 Qe7 14.Bb2 a5 15.a3 Ng6 16.Nxg6 hxg6 17.e4 g5!? 18.Rae1 f6 19.Kh1 g4 20.f4 gxf3 21.Rxf3 Bd7 22.Rf4 Rf8 23.Ref1 Be3 24.R4f3 Bb6 25.g4! Rae8 26.Rh3 If 26.Rg3 then 26...g5 leaves the situation unclear Bxg4 27.Rg3 Bh5 28.Qd2 g6 29.Rf5 Qh7 30.Bxf6 Rf7 31.Qg5 c6 32.e5! dxe5 33.dxc6 Kf8 34.Rxe5 Rxe5 35.Qxe5 Bc7 36.Qe6 Bg4 37.Qxg4 Rxf6 38.Qc8+ 1-0

### British zonal

Michael Adams and Jonathan Speelman were easy qualifiers from the British zonal held in Dublin in April. They were clearly in a class of their own, Adams finishing on 9/11 and Speelman on 8½. Following were K Arkell, Sadler, Hodgson and Levitt 7½; Howell, Parker, Crouch, Wells, McNab and Webster 7; Miles (!), AP Smith, Barry, Ludgate and Rossiter 6½.

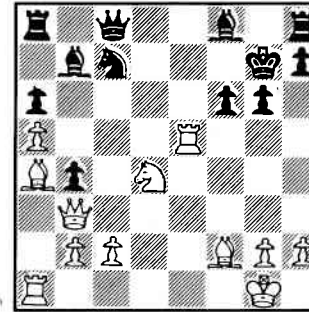
### Quinn, M - Speelman, J

1.c4 b6 2.d4 Bb7 3.Qc2 e6 4.e4 Qh4 5.Nd2 Bb4 6.Bd3 Qg4 7.Kf1 f5 8.Ng3 Bxd2 9.Ne5 Qh4 10.Nf3 Qh5 11.Bxd2 Nf6 12.exf5 Bxf3 13.gxf3 Nc6 14.Bc3 0-0-0 15.Re1 Rhe8 16.Re2 Qh3+ 17.Ke1 Qxf3 18.Rg1 Qf4 19.Rxg7 exf5 20.Qd2 Rxe2+ 21.Kxe2 Re8+ 22.Kf1 Qxh2 23.Bxf5 Ne7 24.Bd3 Ng6 25.f3 Qh1+ 26.Kf2 Rf8 27.Qg5 Nh4 28.Ke2 Qxf3+ 29.Kd2 Ne4+ 30.Bxe4 Qxe4 31.Qg4 Rf2+ 0-1

by Ralph Hart

### Adams, J - Sadler, M Sicilian

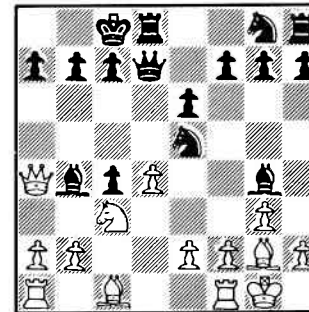
1.e4 c5 2.Nf3 d6 3.d4 exd4 4.Nxd4 Nf6 5.Nc3 a6 6.Bc4 e6 7.Bb3 b5 8.0-0 Bb7 9.Re1 Nbd7 10.Bg5 Qb6 11.a4 b4 12.Nd5 exd5 13.exd5+ Ne5 14.a5!? Qc5? better is 14...Qc7 15.Be3 Qc8 16.Ba4+ Ke7 17.f4 Nxd5 18.fxe5 dxe5 19.Qh5 f6 20.Bf2 g6 21.Rxe5+ Kf7 22.Qf3 Nc7 23.Qb3+ Kg7



24.Nf5+ gxf5 25.Qg3+ Kf7 if 25...Kh6, 23.Bc3+ Kh5 27.h3! intending 28.Qg4++ 26.Bb3+ Nd5 27.Rxd5 1-0

### Kumaran, D - Miles, A Chigorin

1.d4 Nc6 2.Nf3 d5 3.g3 Bg4 4.Bg2 Qd7 5.c4 e6 6.0-0 0-0-0 7.Nc3 dxc4 8.Qa4 Bb4? 9.Ne5! Nxe5



10.Qxa7!! c6 11.Bf4 Bd6 12.Qa8+ Kc7 13.Nb5+! Kb6 14.Qa7+ Kxb5 15.a4+ 1-0

### Hodgson, J - Duncan, C Queens Gambit Accepted

1.d4 d5 2.c4 dxc4 3.Nf3 Nf6 4.Nc3 c5 5.d5 e6 6.e4 exd5 7.e5 Nfd7 8.Bg5 Be7 9.Bxe7 Qxe7 10.Nxd5 Qd8 11.Qc2 Nb6 12.0-0-0 Nxd5

13.Bxc4 0-0 14.Rxd5 Qe7 15.h4 Nc6 16.Qe4 Be6 17.Ng5 g6 18.Nxe6 fxe6 19.Rd6 Nd4 20.Rd1 b5 21.R1xd4! cxd4 22.Bxe6+ Kh8 23.Qxd4 Rad8 24.Bd7 g5 25.e6+ Kg8 26.Rd5 gxh4 27.Rxb5 Rb8 28.Rc5 Rf4 29.Qe5 Rd8 30.f3 h3 31.gxh3 Rxf3 32.Rc4 Rf1+ 33.Kc2 Rg1 34.a4 Rf8 35.Kb3 Rg2 36.Ka2 Rff2 37.Rc8+ Rf8 38.Rxf8+ Kxf8 39.Qb8+ Kg7 40.Qxa7 Kh6 41.Qe3+ Kg7 42.Qc3+ Kg8 43.a5 Qd6 44.Ba4 Rd2 45.Qxd2! 1-0

### Peter Leko wins GM-norm

13-year-old Hungarian-born Peter Leko gained his first GM-norm by scoring 8½/11 in the April series of the Express First Saturday Tournament in Budapest. This follows him just missing out the previous month in the March series. This result matches the record set by Judit Polgar in 1989 for the youngest player to attain a GM-norm. The tournament was category 12 (average rating 2420) and Leko finished 1½ points clear of the field. The scores were Lukacs 7; Zagebelny, Forgarasi, Lobinov, Varga 6; Horvarth, Van Mil 5½; Soos 4½; Szalanczy 3½; Korholz 3; Dolgener 2½.

### Korholz, P - Leko, P Benko Gambit

1.d4 Nf6 2.c4 c5 3.d5 b5 4.cxb5 a6 5.Nc3 axb5 6.e4 b4 7.Nb5 d6 8.Bf4 g5! 9.Bxg5 Nxe4 10.Bf4 Bg7! 11.Qe2 Nf6 12.Nxd6+ usual is 12.Bxd6 Nxd5 13.Rd1 0-0! with complicated play Kf8 13.Nxc8 Qxc8 14.d6 exd6 15.Bxd6+ Kg8 16.Qf3!? Nc6! 17.Ne2 Qe8 18.Bxc5 Ne4 19.Be3 b3 20.Nc1 Nd4! 21.Bxd4 Bxd4 22.Be2 Bxb2 23.Qg4+ Kf8 24.Nxb3 Bc3+ 25.Kf1 Bxa1 26.Nxa1 Rxa2 27.Nb3 Rb2 28.Bd3 Rxf2+ in time trouble Peter misses 28...Nxf2 29.Qd4 Nxd3 30.Qxh8+ Ke7 29.Kg1 Rb2 30.Qxe4 Rxb3 31.Kf2?! better was 31.Qxc8+ Kxe8 32.Bf1 Rb2, though Black is still winning Rb2+ 32.Kf3 Qd8 33.Re1 Rg8 34.Bf1 Qf6+ 35.Ke3 Qc3+ 0-1

### Lisbon and Zagreb zonals

Spain's 27-year-old Miguel Illescas was clear favourite in the Latin- Europe zonal (by more than 100 Elo points) and convincingly won with 8/11. M.Gomez, also of Spain, was the second qualifier for the interzonal with 7, follow by

M Godena, J Ochoa 6½; J Domaso 6, D Contin, A Fernandez, E Arlandi 4½; I Garlego, F Silva 4; AP Santos 2.4; R Garcia 2.

In the strong Europe zonal in Zagreb, GM's Z Kozul of Bosnia and I Smirin, now of Israel, joined earlier qualifiers P Nikolic and I Sokolov in qualifying for the Biel interzonal.

### Minsk festival

The beautiful white-russian city Minsk hosted a festival of chess in April. The highlight was the category 9 round-robin event dedicated to the late Isaac Boleslavsky. Russian player E Dragomaretski won with 7½/11, missing out on a GM-norm by half a point. A category 5 IM tournament was won by a Russian, G Tunik, and there was an open tournament of 210 players.

This game was from the category 9 event.

### Giplis, A - Didishko

Sicilian

1.e4 c5 2.Nf3 d6 3.d4 cxd4 4.Nxd4 Nf6 5.Nc3 a6 6.Be3 e6 7.Be2 Be7 8.f4 0-0 9.Bf3 Qc7 10.Qe2 Nc6 11.0-0-0 Bd7 12.g4 Nxd4 13.Rxd4 Bc6 14.g5 Nd7 15.h4 b5 16.Kb1 Rfe8 17.Qg2 Rab8 18.Rdd1 Nb6 19.Ne2 Nc4 20.Bc1 b4 21.Nd4 Bd7 22.Rd3 a5 23.Bg4 Bf8 24.h5 a4 25.g6! fxc6 26.hxc6 h6 27.Qh3 Qc8 28.Ka1 Rb7 29.Rg3 e5 30.Bxd7 Qxd7 31.Nf5 exf4 32.Bxf4 Rxe4 33.Bxh6 gxh6 34.g7 Bxg7 35.Rxg7+ Qxg7 36.Nxg7 Rbe7 37.a3! Kxg7 38.Qxh6+ Kf7 39.Rf1+ Ke8 40.Qh5+ Kd8 41.axb4 Kc7 42.Rf8 R4e5 43.Qh3 Nb6 44.Qd3 Re8 45.Qc3+! Kb7 46.Qf3+ Ka6 47.Qf1+ 1-0

### Bled Festival

The 14th Bled chess festival was played in the elegant Hotel Golf, also the host many years ago of the Fischer-Tal match. The festival's open event of 114 players included 3 GMs, E Bukic, Z Kozul and Scher, with 8 IMs and 9 FMs. Interest from western players was slight, probably due to the small prize fund, with DM2000 (about \$NZ2200) for first. The majority of the players came from Slovenia and Croatia. In addition to this event, there was a women's tournament of 21 players and a veterans' tournament of 23 players, which

included two participants over 80.

The open tournament favourite Kozul, straight from the tough competition of the Zagreb qualifier, clearly lacked energy, and his experience was the only thing which prevented a worse result than fourth. The Russian GM Scher did not play convincingly and managed only 7th. The third GM, Bukic, played exciting chess which was reminiscent of his early days in the Yugoslav team and finished second.

IM D Sermek stole the show, as he has in the two previous years, to win with 7½, followed by Bukic, Z Mestrovic, Kozul, R Zeleic 7. The women's tournament was won by WGM Vesna Basagic, who only recently managed to escape from war-torn Sarajevo. The senior event was won by the Croatian B Pintar, with 81-year-old Austrian veteran Ernst Stockly second.

### Kozul, Z - Psachis

Queens Gambit Accepted

1.d4 d5 2.c4 dxc4 3.Nf3 Nf6 4.e3 e6 5.Bxc4 c5 6.0-0 a6 7.Qe2 b5 8.Bd3 cxd4 9.exd4 Nc6 10.a4 bxa4 11.Rxa4 Nb4 12.Bb5+ Bd7 13.Bxd7+ Qxd7 14.Nc3 Be7 15.Bg5 0-0 16.Bxf6 gxf6 17.Ra5 Kh8 18.Rh5 Rg8 19.Re1 Rg7 20.d5! Nxd5 21.Nxd5 exd5 22.g3 Bb4 23.Rd1 Qe6 24.Qd3 Rd8 25.Qb3 a5 26.Rd4 Qe2 27.Kg2 Rc8 28.Qxd5 Qxb2 29.Qf5 Qc3 30.Rdh4 Qc2 31.Qxf6 Kg8 32.Nd4 Qg6 33.Qf3 Qa6 34.Nf5 Rc1 35.Kh3 Rg1 36.Re4 Qc8 37.Rg4 Bf8 38.Rxg7+ Bxg7 39.Qg4 Qc3 40. Rg5 1-0

### Rogic, D - Psachis

French Defence

1.e4 e6 2.d4 d5 3.Nd2 c5 4.exd5 Qxd5 5.Ng3 cxd4 6.Bc4 Qd6 7.0-0 Nf6 8.Nb3 Nc6 9.Nbx4 Nxd4 10.Nxd4 a6 11.c3 Qc7 12.Qe2 Bd6 13.h3 0-0 14.Bg5 b5 15.Bd3 Bb7 16.Bxf6 gxf6 17.Qg4+ Kh8 18.Qh4 f5 19.Bxf5! f6 20.Nxe4 Qd7 21.Rad1 Rf7 22.Ng5 Bh2+ 23.Kh1 1-0

## Coming events

Open events scheduled for the next three to five months are listed below. Where a contact is not listed, refer to the contacts for the controlling authorities in the list of affiliated clubs on page 31.

### Local

**June**  
9 Auckland teams tournament starts  
19 Upper Hutt CC 40/40  
20 Auckland University blitz

**June-July** All-Wellington teams tournament

**July**  
3-4 Waitakere Trust Open, 5r Swiss, 2 grades, Kelston Community Centre  
Petone Gambit 30/30  
4 New Plymouth 30/30, Stratford  
17 Wellington interschool team tourney, Wellington College  
20 Waikato Open, Hamilton

**August**  
7-8 WDCA All-Wellington Champ RR 7r, B/C 7r Swiss, 40 in 2, 20ph.  
23-28 South Island Championship, Ashburton  
28-29 Papatoetoe Open, RR 5 r, 40 in 90, plus 15 to finish

**August 30 - September 3**  
NZ Schoolpupils Championship final in Wellington (venue to be finalised)

**September**  
4 Petone Gambit 30/30  
18-19 North Shore Open 5r Swiss  
25-26 Wellington CC 60/60

**October**  
2-3 North Island Rapid Championship, Wanganui (30/30)  
23-25 Labour Weekenders: Otago Ubix Open, Auckland CC Open 5r Swiss, Petone Gambit Open.

### International

**August**  
21-30 Commonwealth Championship, London (part of Lloyd's Bank Masters Tournament)

**August 29 - September 12**  
Asian Junior, Doha, Qatar

**September**  
13-17 Asian Rapid, Doha, Qatar

## 1993/94 NZ Chess Championships Invercargill

December 28 1993 - 11 January 1994  
DOP Ortvin Sarapu

**NZ Championships**  
12 Player Round Robin  
**NZ Premier Reserve**  
12 Player Round Robin  
**NZ Major Open**  
11 Round Swiss  
**NZ Lightning Championship**  
**NZ Rapid Championship**

The tournament venue is  
Ascot Park Motor Hotel  
Cnr Tay St & Racecourse Road,  
Invercargill

**Olympiad Selection Year**  
First two places in NZ Championship  
qualify for NZ Team

**Heavily discounted Accommodation  
and Airfares have been arranged**

All enquires to  
Tournament Organiser,  
Robert Mackway-Jones  
5 Pine Crescent, Invercargill,  
Ph (03) 2171154

## Viva Bobby Fish

Tony Love has forwarded the following poem, penned by Dunedin poet and chess enthusiast John Gibb to mark Bobby Fischer's victorious return to competitive chess with his match win over Boris Spassky.

### Viva Bobby Fish

An odd fish joins the school of perfect loners.  
Bobby cruises down to the far end of the tank  
And sulks for twenty years.

Others lurk, green around the gills,  
And commentate when he finally pops up  
For air, waving a flipper.

Spectators gape through the glass  
As he swallows a former world champion  
And swims off, leaving a world contending  
With itself and full of ripples.

## NZCF Council Report

by Ted Frost, NZCF Secretary

### Affiliation

Affiliated membership of NZCF has shown a modest increase in the past year. With returns in from 18 of the 19 clubs, the number of affiliated players has increased by 22, from 557 to 579. However, the numbers of female players and students affiliated have fallen.

Biggest membership gains were achieved by Wellington (up 17 to 43), Waitemata (up 14 to 37), Howick-Pakuranga (up 7), Wanganui (up 6) and Ashburton (up 5). Gambit has 24 members, including Harbour City's 10 from the previous year. Clubs which have lost members last year include Otago, North Shore, Hamilton and Upper Hutt.

### Olympiad Selection

Council has adopted a Tournament Committee recommendation that two players automatically gain places in the men's 1994 Olympiad team from the Invercargill Congress. Tied players in the top places will not automatically be included and if there is a tie the selectors are to make a choice. Selections will be announced as they are confirmed by Council, and final selections will be made after the 1994 North Island Championship.

There were several reasons for cutting down the automatic selections from three to two - the time between Congress and the Olympiad in November - December; the policy already decided of having a team of five players (instead of six), with the sixth to be a manager able to play a game or two in an emergency; and the expected availability of Ben Martin, who is studying in Britain.

Procedure for selecting the women's team will be decided when arrangements for the 1994 NZ Women's Championship firm up.

### Junior Representation

As a general policy, Council has agreed that all nominations for international events (except from specified qualifying events) will be scrutinised by the selectors and approved by Council. This changes the policy under which the winner of the NZ Junior qualified automatically for the World Junior, and it also affects nominations for the Asian junior.

The change comes about partly for financial reasons, but mainly to ensure that worthy representatives are nominated for international events, and also to obtain the most beneficial overseas competition for our promising young players. Council has noted the reaction from top players in the 1993 NZ Junior that with grandmasters and international masters heading the World Junior entrants, our representatives are likely to be outclassed and gain less from taking part than playing in the Asian Junior (which also has become a much stronger tournament in recent years).

### NZ Junior Championship

Following reports and recommendations arising from the recent NZ Junior and Under-16 tournaments, Council has decided that the NZ Junior and associated tournaments will be conducted as a single Swiss event, with subsidiary titles awarded (such as NZ Under-16, Girls, Under-12) on the basis of the best scores for those groups. Three or more entrants are required in each group for a title to be awarded.

As a result of difficulties with the draw, Council has agreed that in the Junior Championship unrated players be given indicative ratings wherever possible, and that provisional ratings be revised if the rating officers consider this to be justified.

The possibility of Dunedin hosting the 1994 NZ Junior tournament was raised at Easter.

### North Island Rapid Championship

Wanganui have applied to hold an 8-round 30/30 North Island Rapid Championship over the first weekend in October. Council has congratulated Wanganui on their initiative and accepted the proposal in principle, with details to be submitted for final approval.

### Directory and Calendar

After considering the delay in publication of the 1993 directory and calendar of events, Council has decided that the 1994 directory be published in January, immediately after the NZCF annual meeting. Clubs will be asked in October-November to confirm their tournament arrangements for the following year, and the calendar will be updated in NZ Chess.

## Affiliated Clubs

**Ashburton** PO Box 204, Ashburton. Meets Mondays 7.30pm (Feb-Oct), Room 1 (upstairs), Public Library, corner Havelock and West Streets. Contacts, Roy Keeling (03)86-936, Stephen Taylor (03)85-761.

**Auckland Chess Centre** Meets Mondays 7.15pm, 17 Cromwell St, Mt Eden, Auckland 1003. Tel (09)360-2042 club-room.

**Canterbury** 227 Bealey Avenue, Christchurch. Meets Wednesdays, 7.30pm. Tel (03)366-3935 club-room. Pres, Mark Guy, 9 Bennett St (03)352-6991. Sec, Pat Jordan (03)338-4274.

**Civic** Meets Tuesdays 7.30pm, Turnbull House, Lower Bowen St, Wellington. Sec, John Gillespie, 164 The Ridgeway, Mornington (04)389-2775.

**Gambit** Sec, Ted Frost, 17 Croydon St, Karori, Wellington 5 (04)764-098.

**Hamilton** Inquiries Pres, Hilton Bennett, 65 Te Aroha St (07)435-077

**Howick-Pakuranga** Meets Tuesdays 7.30pm, St John Ambulance Hall, Howick-Pakuranga Highway, Highland Park. Pres, Paul Spiller (09)535-4962. Sec, Hugh Webber, 7 Micawber Place, Howick (09)535-8151

**Hastings-Havelock** North P.O. Box 184, Hastings. Meets Wednesdays 7pm, Library, Havelock N High School, Te Mata Rd. Sec, Chris Smith (06)877-4583.

**Invercargill** Meets Wednesdays 8pm, staff room, South School, Ness St. Sec, Robert Mackway Jones, 5 Pine Cres, Invercargill (03)217-1154.

**Kapiti** Meets Thursdays 7.30pm, Block E Kapiti College, Margaret's Road, Paraparaumu. Pres, Ab Borren, P O Box 127, Paraparaumu (04)298-4167. Sec, Bill Cox, 25 Jeep Rd, Raumati Sth (04)298-8589

**New Plymouth** 11 Gilbert St, New Plymouth. Meets Tuesdays, 7.30pm. Pres, R P Bowler, 251 Coronation Ave (06)758-0797. Sec, Keith Okey, 253d Coronation Ave (06)758-8811.

**Auckland Chess Assn**, sec Aidan-B. Howard, 17 Cromwell St, Mt Eden, Auckland 1003; (09)360-042 (Auckland CC club-room). Pres, O Sarapu, 8 Barrington Rd, Auckland 2; (09)376-3083.

**North Shore** P.O. Box 33-587, Takapuna, Auckland 9. Meets Wednesdays 7.30pm, Northcote Community Centre, cnr College Rd/Ernie Mays St, Northcote. Club capt, Peter Stuart, 24 Seacliffe Ave, Belmont (09)445-6377.

**Otago** 7 Maitland St, Dunedin. Meets Wednesdays and Saturdays, 7.30pm. Tel (03)477-6919 clubroom. Pres, David Reid, 12 Marquis St, Dunedin (03)473-7652.

**Papatoetoe** Meets Wednesdays 7.30pm, St George's Anglican Church Hall, Landscape Rd, Papatoetoe. Club capt, Graham Banks, 49 Hutchinson's Rd, Howick (09)534-7951.

**Petone Gambit** Meets Thursdays 7.30pm Central Bowling Club, Roxburgh St, Petone. Pres, Mark Noble, 97 Seddon St, Naenae, Lower Hutt (04)567-0467.

**Rotorua** Meets Thursdays 7.30pm, Salvation Army Hall, Old Taupo Rd. Sec, R Boyden, P.O. Box 1363.

**Upper Hutt** Meets Mondays 7.30pm, Fraser Cres. School Hall, Redwood St. Sec, Chris Bell, 120 Nicholson Rd, Khandallah, Wellington (04)479-3308.

**Waitemata** Meets Thursdays 7.30pm, Kelston Community Centre, cnr Great North Rd and Awaroa Rd, Kelston. Pres, Bob Smith, 2 Autumn Ave, Glen Eden, Auckland 8 (09)818-4113 or contact Steve Lawson (09)818-5137

**Wanganui** Meets Chess and Camera Club, Cooks Gardens. Pres, Charles Ward, 53 Patapu St (06)343-2215. Sec, Gordon Hoskyn, 7 Pehi St, Wanganui (06)343-6101.

**Wellington** Meets Saturdays, juniors 6pm, club 7.30pm, Turnbull House, Lower Bowen St. Pres, Tim Frost, 1/51 Cornford St, Karori (04)476-3541. Sec, Ted Frost, 17 Croydon St, Karori (04)476-4098.

**NZ Correspondence Chess Assn**, P.O. Box 3278, Wellington. Sec, J W (Sandy) Maxwell, (04)237-4753.

**Wellington District Chess Assn Inc.**, sec, Ted Frost, 17 Croydon St, Karori, Wellington 5; (04)476-4098.