

NEW ZEALAND CHESS SUPPLIES

PO BOX 42090 WAINUIOMATA

PHONE (04) 648-578

FAX (04) 697-046

STOCKISTS OF THE WIDEST SELECTION OF MODERN CHESS LITERATURE IN AUSTRALASIA. CHESS SETS, BOARDS, CLOCKS, STATIONERY AND ALL PLAYING EQUIPMENT. ELECTRONIC CHESS AND DATABASE - CHESS COMPUTERS A SPECIALITY, DISTRIBUTORS OF NOVAG and MEPHISTO WORLD CHAMPION MODELS.

SEND S.A.E FOR BROCHURE AND CATALOGUE (STATE YOUR INTEREST)

AUCKLAND
STOCKISTS

IM ORTVIN SARAPU - 8 BARRINGTON ROAD, AUCKLAND 2.
ALL PLAYING EQUIPMENT AND CHESS STATIONERY.
SCHOOL SUPPLIES A SPECIALITY. PHONE (09) 763-083

PRIME TIME GAMES LTD

STRAND ARCADE, QUEEN ST, AUCKLAND

NEW ZEALAND'S ONLY COMPLETE CHESS RETAIL STOCKIST
PHONE (09) 358 0282

CHRISTCHURCH
STOCKIST

SCORPIO BOOKS LTD

CNR HEREFORD STREET, OXFORD TERRACE, CHRIST-
CHURCH. BOOKS, SETS, CLOCKS ETC.

PHONE (03) 792-882

DUNEDIN
STOCKIST

TONY DOWDEN - FLAT 2, 808 GREAT KING STREET,
DUNEDIN. ALL PLAYING EQUIPMENT AND CHESS STA-
TIONERY. PHONE (03) 477 1533

NIC-BASE
CONSULTANT

BERNARD CARPINTER 7 BROOMHILL RD, WELLINGTON 5
SPECIALIST CHESS DATABASE ADVICE, INFORMATION AND
DEMONSTRATION PHONE (04) 847 600

Beautiful plastic Staunton pattern sets



kings. 3 3/4 inches (9.5cms.) high. Felted pieces. Packaged in cellophane bags

\$14.50 in bags - Boards to suit from \$5.00 - **\$18.50 in box**

ALSO

WELL MADE WOODEN SETS, FELT BASED AND WEIGHTED
IN ROSEWOOD AND EBONY, BOXED OR LOOSE FROM \$49

'EVERYTHING FOR CHESS AT N.Z.C.S'

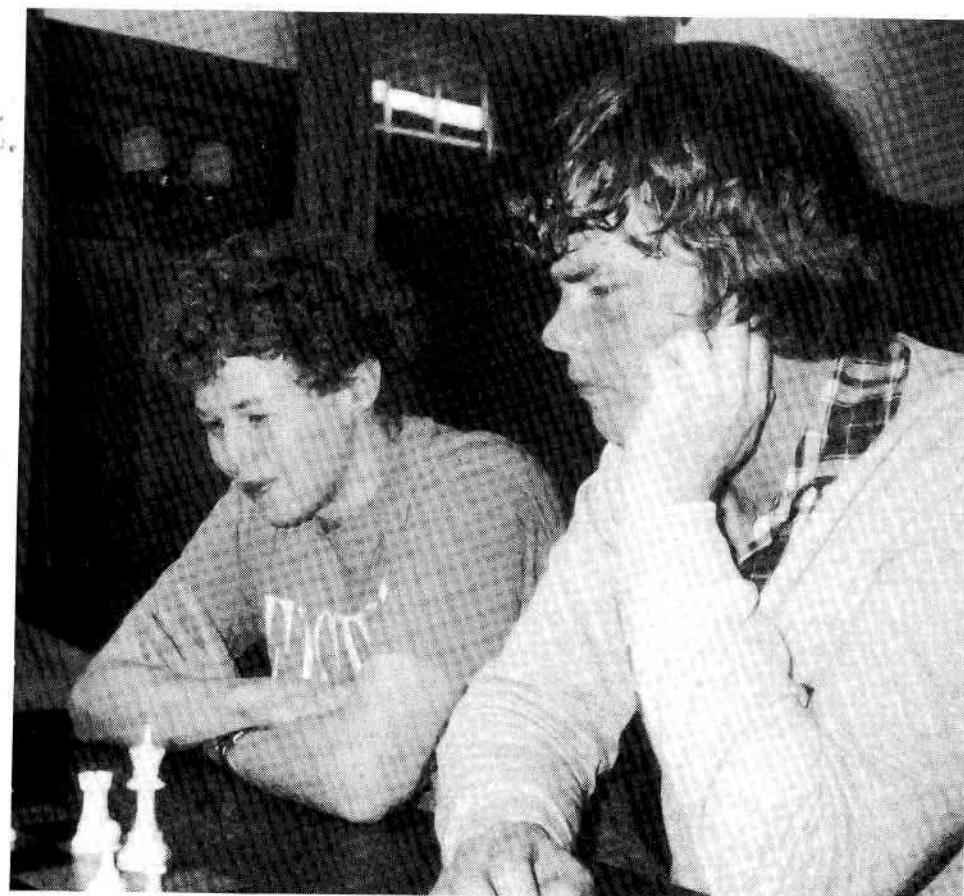
NEW ZEALAND CHESS



Registered at Post Office HQ, Wellington as a magazine

R
VOL 17 No 3

\$2.50
MAY 1991



BEN MARTIN AND GRAEME SPAIN - KARORI 1989

NEW ZEALAND CHESS is published bi-monthly (February, April, June, August, October and December) by the New Zealand Chess Association.

Unless otherwise stated, however, the views expressed herein are not necessarily those of the Association.

ADDRESSES

All articles and letters should be addressed to the editor, 11 Arizona Grove, Kowhai Park, Wellington.

Correspondence to the association should be addressed to the Secretary, NZCA, PO Box 3130, Wellington.

Subscriptions, changes of address and advertising inquiries should be addressed to the Secretary.

SUBSCRIPTION RATES

Rates are for one year's subscription. Overseas rates are in US dollars.

Surface mail

New Zealand \$NZ15.00

Other countries \$US15.00

Airmail

Australia and South Pacific \$US15.00

Other countries \$US20.00

ADVERTISING RATES

Full page \$NZ40.00

Half page or full column \$NZ20.00

Half column \$NZ10.00

Club directory listing \$6.00 per annum
\$2 per alteration.

DEADLINE FOR COPY

Editorial copy should be in the editor's hands by the second Saturday of the month preceding publication.

Printed by Northland Printing Company Ltd
22-24 Garrett Street, Wellington
for the New Zealand Chess Association
PO Box 3130 Wellington

Hardware: Atari computer and Epson printer.
Software: Timeworks DTP.

INSIDE STORY

The editor was unable to attend the early May council meeting or the special general one in New Plymouth so this month's report could be sketchy.

The president has written expressing the council's regret at the decision of the Governor-General to decline patronage of the association. Since this is one of those longstanding name-only things, it seems a little odd. Has chess fallen so far? Has the sex change anything to do with it? Does someone want to raise the image (and/or price) of patronage? We do not imply any of these; it is just that our imagination goes wild sometimes.

A letter from a certain sporting personality regarding rights and advertising was received. That's it.

Jim Simmons, vice president, triathlon entrant (masochist!) and rating officer, is to be (or has been) NZCA delegate to the AGM of the New Zealand Assembly for Sport. Bill Poole and Tim Frost will observe.

Mayor of Wellington, Jim Belich, with Councillor Weir and Network Communications are still chasing funds for a World Cup event in November 1992. Won't that be about the time of the Olympiad? Perhaps another date should be looked at.

Adoption of a standard layout for tournament entry forms was suggested, including phone numbers (at home and/or during the event). Also suggested was the secretary's address and phone number be included in club listings in the magazine.

Ortvin Sarapu may play in the World Seniors event in Germany in November and, we believe, has applied for, and should get, an international arbiter's ticket.

How things change! Before the last AGM things were so grim that an increase in fees was proposed. On May 2 the council talked about giving \$500 to World Junior entrant and hundreds more for coaching international representatives!

If we hear anything about the special general meeting it might appear in this issue somewhere else.

Just when we decide to experiment with some features of our desktop publisher, we lost the use of a laser printer. This issue has been produced on our own 24-pin printer so the definition is not quite so good. Hope to find another laser for the August issue.

NEW ZEALAND CHESS

EDITOR: Bill Ramsay

OVERSEAS EDITOR: NM Peter Stuart

WOMEN'S EDITOR: Vivian Smith

SPECIAL CORRESPONDENT: Emil Melnichenko

EDITORIAL

When the treasurer asked for a survey of the subscription list we found quite a few people were receiving a free magazine. This does happen where we exchange magazines with other publishers and usually contributors, the regular kind, get a copy. We also believe that titled players, like Ortvin Sarapu and Vernon Small, should receive a copy. For the rest, they are being culled and our printing order this month will be down quite a few copies.

This could be a result of the current economic climate. Certainly some clubs think so as they have reduced their orders for the magazine but we are unable to follow or accept their logic.

Clubs are supplied with a free copy (goodness knows why. There hasn't been one official comment in the magazine since the present editor took over) and receive a discount on any others they order. That's right, a discount.

When your club says it has to economise and you will have to order your own magazine they are doing you a disservice. Individual orders cost the full price!

Accordingly, we urge anyone who wants to receive the magazine on a regular basis to ask their club to order it for them. In most cases they will not give you the discount but its presence on their books could mean they do not need to increase the club subscription. Actually, we would like every club to include the magazine in the club subscription. Then all members will be contributing the discount to the club, the magazine will have a larger readership and maybe some funds to improve it.

Of course, the club's reason for cutting out the magazine may be to reduce (ha, ha) or hold the present subscription rate but if \$15 is going to make a significant difference to your subs then the club is still in the dark ages. Annual fees of anything less than \$50 went out with the big wheel bike; in cycling or most other sports anyway.

1991 NORTH ISLAND CHAMPIONSHIP

Name	Rating	1	2	3	4	5	6	7	8	Pts
1 A Ker	2287	W13	W27	W19	W33	W6	W16	W7	W5	8
2 M Freeman	2083	W14	L19	W38	W5	D29	D21	W28	W6	6
3 N Metge	2005	W40	W30	D4	L8	W13	D9	W23	W12	6
4 M Noble	2102	W41	W29	D3	W15	D7	L6	W19	W11	6
5 G Aldridge	2018	W37	D28	W24	L2	W41	W29	W16	L1	5.5
6 R Dive	2287	W26	W21	W9	D7	L1	W4	W12	L2	5.5
7 R Smith	2236	W33	W31	W11	D6	D4	W33	L1	D9	5.5
8 P Stuart	2155	W50	W10	D15	W3	L16	D28	D21	W33	5.5
9 P Spiller	1951	W47	W56	L6	W22	D13	D3	W33	D7	5.5
10 A Aldridge	1837	W54	L8	W42	L21	W49	L14	W25	W23	5
11 H Bennett	1957	W34	W22	L7	L19	W31	W42	W14	L4	5
12 N Cruden	1566*	L7	D51	W43	D17	W35	L19	W27	W28	5
13 R Goris	1606*	L1	W49	D26	W24	L3	W37	D31	W29	5
14 P Hair	1557	L2	W36	W35	L18	W46	W10	L11	W37	5
15 P Hawkes	1989	W44	W35	D8	L4	L28	W52	D29	W30	5
16 J Sarfati	2243	D24	W25	W17	D20	D8	L1	L5	W21	5
17 D Storey	1641	W45	D20	L16	D12	W26	L23	W32	W31	5
18 M van der Hoorn	1982	W42	W23	L5	W14	D9	L20	D30	W35	5
19 L Whitehouse	1808	W36	W2	L1	W11	L5	W12	L4	W26	5
20 D Elliott	1984	W39	D17	W28	D16	D21	W18	L6	L3	4.5
21 P Tuffery	1909	W48	L6	W47	W10	D20	D2	D8	L16	4.5
22 G Barrow	1620	W55	L11	W50	L9	L23	D49	W48	D36	4
23 D Boyd	1632	W57	L18	D41	D26	W22	W17	L3	L10	4
24 C Burns	1600*	D16	W32	L5	L13	D51	L25	W40	W49	4
25 D Capper	1565	L5	L16	W57	L38	W45	W24	L10	W43	4
26 R Edwards	1603	L6	W48	D13	D23	L17	W50	W42	L19	4
27 N Goodhue	1949	W49	L1	W56	L29	L42	W38	L12	W41	4
28 R Helbig	1740E	W52	D5	L20	W51	W15	D8	L2	L12	4
29 J McDonald	1836	W49	L4	W39	W27	D2	L5	D15	L13	4
30 K Metge	1700	W53	L3	D37	L41	W54	W34	D18	L15	4
31 D Notley	1847	W51	L7	W34	D32	L11	W47	D13	L17	4
32 K Okey	1754	D43	L24	W53	D31	D37	D41	L17	W42	4
33 G Spain	2205	W25	W43	W18	L1	W19	L7	L9	L8	4
34 C Stott	1499	L11	W55	L31	D44	W38	L30	D43	W46	4
35 D Stracy	1681	W38	L15	L14	W56	L12	W51	W41	L18	4
36 E Tuffery	1427	L19	L14	D48	L54	W55	W44	W47	D22	4
37 M Petrove	1557	L5	W52	D30	D46	D32	L13	W52	L14	3.5
38 D Rawnsley	1267	L35	W44	L2	W25	L34	L27	W50	D48	3.5
39 E Swayne	1549	L20	W45	L29	L42	L43	D57	W56	W51	3.5
40 K Austin	1551*	L3	D53	L51	D43	L52	W55	L24	W54	3
41 J Bojtor	1562	L4	W52	D23	W30	L5	D32	L35	L27	3
42 J Davis	1514*	L18	W57	L10	W39	W27	L11	L26	L32	3
43 B Hooton	1424	D32	L33	L12	D40	W39	D46	D34	L25	3
44 R Jackson	1550E	L15	L38	W45	D34	L47	L36	D51	W52	3
45 J McRae	1241	L17	L39	L44	W57	L25	D56	W55	D47	3
46 B Marsick	1717	L56	D47	W55	D37	L14	D43	D49	L34	3
47 G Mears	1483	L9	D46	L21	W53	W44	L31	L36	D45	3
48 M Morrison	1473	L21	L26	D36	L52	W53	W54	L22	D38	3
49 J Neilson	1483*	L27	L13	W58	W50	L10	D22	D46	L24	3
50 R Rayner	1563*	L8	W54	L22	L49	W56	L26	L38	W53	3
51 N Easterlow	1458	L31	D12	W40	L28	D24	L35	D44	L39	2.5
52 W Wiederkehr	1446*	L29	L41	D54	W48	W40	L15	L37	L44	2.5
53 R Bowler	1320	L30	D40	L32	L47	L48	W58	D54	L50	2
54 P Neilson	1458	L10	L50	D52	W36	L30	L48	D53	L40	2
55 R Shaw	1013	L22	L34	L46	W58	L36	L40	L45	W56	2
56 R Gordon	1382*	W46	L9	L27	L35	L50	D45	L39	L55	1.5
57 W McLean	1200E	L23	L42	L25	L45	W58	D39	WITHDREW	WITHDREW	1.5
58 C Bolton	1400E	L28	L37	L49	L55	L57	L53	BYE	W/D	1

Is this the first North Island Championship in which the champion scored 8 out of 8?

ANTHONY KER SLAYS 'EM

A brief look at the scoretable from the North Island Championship shows one of the most decisive major tournament wins seen in New Zealand since the 1950s.

Eight wins from eight games and the nearest opponent way behind on six points. DOP Tim Frost, who supplied the table, told us that two of Ker's theoretically strongest opponents lost on time. We don't mention this as an excuse for the opponents; we just want to stress that if one does not keep within the time limits, one has a lost game!

There was a field of 58 and, among the also-rans, were names like Dive, Spain, Sarfati, Smith so there cannot be any suggestion of a lack of strength.

Ker won the National Championship last January and now the North Island. With the South Island tourney to be held in Nelson this year it would seem quite possible that Ker could also play in that event. Should he play, and win as we believe he could, he would be the first player to win all three major tournaments in one year.

We extend our congratulations to Anthony Ker whose playing style and many successes show the value of dedication, hard work and good timekeeping!

We have been promised games for the next issue. No names; we have been promised reports before.

MANILA - IN JUNE

The latest FIDE Forum announced the next Olympiad will be held in Manila, Philippines, from 6-25 June 1992.

The 30th Olympiad, it will be held at the reception Hall of the Philippine International Convention Centre. Players will be billeted at neighbouring five-star hotels.

The Philippines has extensive experience of organising big chess events. There was the Karpov-Korchnoi match, two World Juniors, a couple of Interzonals and numerous international and regional events. Their bond was one million Swiss francs, cash.

LOCAL AIMS

The World Cup tournament is still possible. There's money to be found but it could be a big media affair and cause increased interest in chess.

Some Auckland players are planning a 10-player tournament with one GM and three IMs plus six locals. It could also happen in Wellington around the same time; presumably with the same overseas titled players.

LOCAL NEWS

AUCKLAND

Nigel Metge's report on the NZ Women's Chess Championship 1991. Mabel E Abbott was women's champion in 1937, the year her husband, H R Abbott, won the national championship. Mrs Abbott won the Reserve, probably that year too.

As original initiator of the Mabel Abbott Trophy (first presented in 1979-80) I am keen to see it regularly contested. The small and scattered number of women players make this difficult and there has been a lapse of seven years since the last Women's Championship.

Following a suggestion at the last AGM, the championship was held at Easter. Thanks are due to NZCA for prompt approval, Auckland Chess Centre for venue and director and Prime Time Games for sponsorship.

Fenella Foster demonstrated a small but distinct superiority over her closest rivals, winning sharp games against Vivian Smith and Katrine Metge. Helen Courtney, introduced to chess by Smith three years ago, did the best of the non-prizewinners while Stormie Neilson won the best schoolgirl prize; both these women show potential for further chess development.

Result: F Foster 7; V Smith 6; K Metge 5; H Courtney 4; Edith

Otene 3; Eva Tweedle 2; S Neilson 1; Esme Mulligan 0.

V Smith - F Foster

1 d4 Nf6 2 c4 g6 3 Nc3 Bg7 4 e4 d6 5 f3 Nc6 6 Be3 a6 7 Qd2 0-0 8 Nge2 e5 9 d5 Na5 10 Nc1

White prefers to keep her g-pawn mobile for attack; a positional edge for White occurs after 10 Ng3 c5 11 dxc6 bxc6 12 0-0-0. 10...c5 11 g4 Bd7 12 h4 Rb8 13 Bh6 b5 14 Bxg7 Kxg7 15 cxb5 axb5 16 h5 Rh8 17 h6+?! A crucial decision - White blocks in the black rook but reduces her chances to open lines. More promising is 17 Bd3 and placement of knights on e3 and g3 and rook on g1. 17...Kf8 18 b3 Qb6 19 Rb1

b4 20 Nd1 Qd8 Both players lose time. White should have tried 21 g5 with Nd3 and f4 to follow. 21 Ne3 Ng8 22 Be2 Ra8 23 Rb2 Qg5 24 Nf1 Qxd2+ 25 Nxd2 Nf6 26 Nd3 Ke7 27 Nf2 Ra7 28 Bd3 Rg8 29 Nd1 Rga8 30 Ne3 Ne8 31 Kf2 Nc7 32 Kg3 Nb5 33 Bxb5 Bxb5 34 Rh2 f6 35 Ndc4? Allows Black to liquidate to a won ending. Passive resistance by 35 Rf2 probably holds the draw. 35...Nxc4 36 Nxc4 Bxc4 37 bxc4 Ra3 38 Rhf2

On 38 Rhc2 g5 and ...Kf7-g6 wins. 38...Rc3 39 Rfc2 R8a3 40 Rxc3 Rxc3 41 Rb3 Rxc4 42 a4 Rc2 0-1. A good struggle.

H Courtney - E Otene

1 e4 e5 2 Nf3 Nc6 3 Bc4 h6 4 c3 Nf6 5 d4 exd4 6 cxd4 Nxe4

LOCAL NEWS

WANGANUI

Mark Brimble sent us a cutting of a story by Gordon Hoskyn on the triangular interclub contest between New Plymouth, Wanganui and Palmerston North. That's the way they finished after playing all day on the 20th April. The way we count it, New Plymouth got 11, Wanganui 10 and Palmerston North 6. The 40 contestants were not evenly divided between the clubs.

KAPITI

Glenys Mills tells us the club hosted its first 30/30 event on 27th April and got a good response from the Wellington region. They had also amassed four sponsors so awarded prizes in four groups though it was run as one big swiss. DOP and player was Mark Noble.

Russell Dive and **Jonathan Sarfati** shared the Paraparaumu Book Exchange prize but there were only crumbs when six players tied for the Coastlands 20/20 Photography one (A Borren, D Capper, P King, W Ramsay, A Winfield, R Wood).

The Jim McIntosh Handcrafted Shoes prize was shared by Pat Cunningham and Bala Venkatraman while the locals came through to claim the Raumatī Bookshop prize, split four ways (M Gosnell, M Hill, S Parker and D Ward).

7 Nc3 Bb4 8 0-0 Nxc3 9 bxc3 Bxc3 10 Ba3 Bxa1 11 Re1+ Ne7 12 Ne5 0-0 13 Nxf7 Rxf7 14 Bxe7 Qe8 15 Qb3 Kh7 16 Bxf7 Qh8 17 Qc2+ g6 18 Qxg6#

WAITEMATA

The Summer Cup again went to **Bob Smith** with 5/6. Jim Cater and Barry Martin-Buss secured the draws with Smith and second and third places respectively. In "the concurrent Under 400" event **Dennis Morrow** was first with 5/6.

Round-robin tournaments: A - Smith 5/5; B - N Easterlow 5/5; C - Eva Tweddell and Peter Leutenegger 3.5/5.

BAY OF PLENTY

42 contested the Bay of Plenty Owens Services Championship. It was a nine-round swiss in which each player had three weeks to complete a game. **Walter Wiederkehr** won with eight wins and Colin Bell was second with 6.5.

A tie for the Junior Championship between **Caleb Wright** and **Vaughan Collingwood** (both 12 years old) with five points each was resolved when Wright won on the countback. The grade prize was won by Phil Finlay with 6 wins.

The 20-up competitions (first to win 20 games against different opponents on club nights) were won by **Barney Sullivan** (our correspondent) and Norm Maher.

LOCAL NEWS

CIVIC

Dave Capper reported the club's Summer Cup featured some invited players this year and 30 took to the hustings, apparently eager to get some early season practice.

Russell Dive showed his usual standard of play to achieve 5.5/6. Four players, Arkady Dudenkov, Allan Johnston, Rowan Wood and Dave Capper shared second a point behind.

Simon Grainger won the under 1600 grade and **Eddie Sarfas** won a special prize for showing patience and good nature under the constant threat of boards 14 and 15!

The traditional Civic Easter was, this year, held at the same venue as the National Junior (back where it started) and the National Under-16. There were 38 players involved altogether and though the Civic Easter entries were reduced because some were "deflected" into the other events, the whole atmosphere was improved by the age and ability range present. The youngest player was 10; the oldest 84!!

Russell Dive again won the main event with 5.5/6. Mike Turner was second while Nathan Goodhue and Paul Dunn shared third spot. Grade prizes went to Alvaro Lacunza and Bala Venkatraman.

Meanwhile, after all sorts of drama, including time scrambles and wonderful fighting chess, the National Junior was won by **Darryn Elliott** on 5/6 with Edward Swayne second on 4.5. Simon Grainger and Justin Davis shared third with four points.

In the Under-16, **Shamnika Rupasinghe** scored an excellent and professional 6/6 with his old (young!) rival Alexis Shead second on 4.5 and Kent Wong third with four points.

Finally, it was great to see two female players in the competition. They were Zoe Kingston and Adele Barker. Let's hope they keep playing for a long time and encourage many more of their sex to participate.

OTAGO

Tony Dowden has taken over the task of informing us of the doings in Otago and seems to be as keen and efficient as anyone else down there!

The Cleland (national champion 1998-99 with a picket fence, Ed) Trophy was played on six consecutive Saturdays with the faster than normal time control of 35 in 90 minutes and 15 minutes to finish. Regarded as a useful early season warm-up event, not everybody played in all rounds. Result: **G Haase 5/6**; **T Dowden 5/5**; **K Boyd 4/5**; **P Sinton 4/6**.

LOCAL NEWS

The Otago Easter Open was sponsored by Rank Xerox again this year. 31 players entered including two from Nelson, one each from Christchurch and Cromwell and four from Invercargill.

Ben Martin showed his class with six straight wins. Tony Dowden came second after upsetting top seed Richard Sutton in the last round and Greg Spencer-Smith sneaked into third though he didn't meet any of the top three seeds.

Kendall Boyd seems to attract exciting play, for and against!

T Duffield - K Boyd

1 e4 Nc6 2 Nc3 g6 3 g3 Bg7 4 Bg2 d6 5 Nge2 h5!? 6 d3 Nf6 7 Bg5 Ne5 8 Qd2 Bh3 9 0-0 Qd7 10 f4 Bxg2 11 Kxg2 Nc6 12 Bxf6 exf6 13 Nd5 h4 14 Qe3 hxg3 15 Qxg3 0-0-0 16 Rf2 Rh5 17 h4 Rdh8 18 Rh1 f5 19 c3 Qe6 20 Kf3? fxø4+ 21 dxe4 Rxd5! 22 exd5 Qxd5+ 23 Kg4 Qxh1 24 Rg2? Rxh4+ 0-1.

J Sutherland - K Boyd

1 d4 Nf6 2 Bg5 c5 3 Bxf6 gxf6 4 d5 Qb6 5 Nd2 Qxb2 6 e3 Qe5 7 Bc4 b5?! 8 Ngf3 Qh5 9 Bxb5 Qxd5 10 Qe2 a6 11 Bc4 Qh5 12 0-0-0 d5 13 Bb3 c4 14 Nxc4 dxc4 15 Qxc4 Bd7 16 Rd5 Qg4 17 Rd4 Qe6 18 Qc7 Qf5 19 Ba4 Bg7? 20 Qc8#

Dowden sacrificed quite a lot of material during the tournament (an improvement on his blundering it at Congress!). The Q v R, N and B in

the King's Gambit against rapidly improving schoolpupil David Guthrie looked dodgy for a while but the sacrifices against top local pupil Matthew Vincent were quite sound.

*Sorry Tony!
Best diagram
and copy*

The highlight of the event was Martin's interesting game against Sutton. The white kingside pawns lead distinguished careers.

B Martin - R Sutton

1 d4 d5 2 c4 e6 3 Nc3 Nf6 4 cxd5 exd5 5 Bg5 Be7 6 e3 c6 7 Qc2 0-0 8 Bd3 Nbd7 9 Nf3 Re8 10 0-0-0 Nf8 11 h3 Be6 12 Bxf6!? Bxf6 13 Kb1 Rc8 14 g4 Qa5 15 g5 Be7 16 Rhg1 Bd6 17 Nh4 Qd8?! 17...c5 Martin suggests, is logical. Black decides to try to stoically defend rather than counter-attack but the attack comes in several waves. 18 Nf5 Bxf5 19 Bxf5 Rc7 20 h4 g6 21 Bd3 f5 22 gxf6 Qxf6 23 h5 Rg7 24 hxg6 Nxg6 25 e4! Bb4 26 e5

LOCAL NEWS

Qf7 27 Ne4! Be7 28 Ng3 Nh4 29 f4 Kh8 30 f5 Reg8 31 Qf2 Rg5 32 f6 Bf8 33 Rh1 Rxg3 34 Rxh4 h6 35 a3! R8g5 36 Qf4 Qe6 37 Rdh1 Kg8 38 Rxh6! Bxh6 39 Rxh6 Rg1+ 40 Ka2 Kf8 41 Rh8+ Rg8 42 Qh6+ Ke8 43 Bg6+ 1-0. If 43...Rxg6 44 Qxg6+ or 43...Kd7 44 Qh7+ or 43...Kd8 44 Rxg8+ Qxg8 45 f7.

Martin-Dowden was interesting. Despite being his only loss, it was probably Dowden's best game.

B Martin - T Dowden

1 d4 Nf6 2 c4 c5 3 d5 e6 4 Nc3 d6 5 e4 g6 6 Nf3 exd5 7 cxd5 Bg7 8 Be2 0-0 9 0-0 Na6 10 Nd2 Nc7 11 a4 b6 12 Nc4 Ba6 13 Bg5!? 13 Bf4 is normal. 13...Rb8 14 Qd2 Bxc4 15 Bxc4 a6 16 Rfe1 b5 17 Bf1 Qc8 18 Re3!? Very inventive. 18...h6 19 Bf4 Qd7 20 axb5 Nh5! 21 Rf3 Nxf4 22 Qxf4 axb5 23 Ra7 Ra8 23...Qd8!? 24 Nxb5 Not 24 Bxb5 Rxa7 25 Bxd7 Ra1+ 24...Rxa7 25 Nxa7 Nxd5 26 exd5 Qxa7 27 Qxd6 Bxb2 28 g3 Bd4 29 Kg2 Qb8 30 Qc6 Qa8? 30...Rd8 is a draw. 31 Ba6 Qe8 32 Qc7 Qd8 33 Qc6 Qe8 34 Bb7 Qxc6? A final mistake in time trouble but Black was in difficulty. 35 dxc6 Be5 36 Re3 f6 37 Rxe5 fxe5 38 c7 and 1-0 in a few moves.

The first mini-tournament (part of the club championship) was in April. Winners were - A grade: Ben

Martin; B grade: Geoff Aimers and Matthew Vincent; C grade: Hank Chin; D grade: Chris Benson; E grade Ben Carodoc-Davies; F grade Alan Chang; G grade Kevin Greer. (We received another Martin-Sutton game, annotated by White, maybe next issue, Ed).

CANTERBURY

BRIAN WOOD 1926-1991

It is with the greatest regret that we report the tragic death of stalwart member Brian Wood. Brian was knocked down and killed by a motor car on the evening of March 4th 1991 outside the clubrooms in Bealey Avenue while the team was assembling to leave for a match in Ashburton. He was always ready to give advice to the newer members and was proposing to extend the coaching available to younger players. His presence will be sadly missed by the club and we extend our sympathy to his wife and family.

Pat Jordan

B Wood - M Sadler (30/30)

1 d4 Nf6 2 c4 e5 3 dxe5 Ng4 4 f4 Bc5 5 Nh3 d6 6 exd6 cxd6 7 Nc3 Ne3 8 Qd3 Bf5 9 Qd2 Nxf1 10 Rxf1 Qh4+ 11 Nf2 Qxh2 12 g4 Be6 13 Nd5 Na6 14 a3 0-0-0

LOCAL NEWS

15 b4 Bxf2+ 16 Rxf2 Qh4 17 g5 Nc7 18 Bb2 Bxd5 19 cxd5 Rhg8 20 Rc1 Kb8 21 Bxg7 Qh1+ 22 Rf1 Qxd5 23 Qxd5 Nxd5 24 Bb2 Rg6 25 e4 Re6 26 e5 Ne3 27 Rf3 Ng2+ 28 Kf2 Nh4 29 Rd3 h6 30 gxf6 Rxh6 31 Rxd6 Rxd6? 32 exd6 1-0.

New officials in the club include: President, Mark Guy; Secretary, Brian Nijman; Editor newsletters, Pat Jordan. The clubrooms, too, are looking new after a series of work bees.

The club championships are to be held 24-27th July. Time control 36 in 90 minutes plus 60 minutes to finish. It is the third system tried in the past three years in an effort to get all games played, and rated!

Last year's champion was Philip Abrahamson with 6.5/7 ahead of Robert van Nobelen and Dean Edwards on 5. Scott Wastney and Shane Hudson shared the B grade with six points each while Mark Sadler won the C grade convincingly with seven points.

Two "new" events were tried this year. The first was a time handicap tourney which resulted in a three way tie between Steven Coates, Michael Burns and Mark Guy. That's the way they finished after the tiebreakers.

In the first round of the Top Dog event, the players were split into pairs with one from each pair

making the odd numbered moves and the other the even ones. 15 moves in 30 minutes, supper, then 30 minutes to complete. No consultation, except at supertime!

WELLINGTON

The new Wellington District Chess Association held its annual meeting recently. Officers elected were:

Patron, R S Kent; Pres, P Collins; V-Pres Tim Frost; Sec, Ted Frost; Treas, Russell Dive; Tourney Dir, Mark Noble; Man com, J D Sarfati, G Marner A Pomeroy, A Johnston.

Affiliation fees will be \$6 (\$3 if schoolpupil). Interclub on home and away basis. Bledisloe Cup v Otago on June 15, Turnbull House.

Upper Hutt 40/40, July 6. Upper Hutt Town Hall. Contacts: Phone 283 172 or 284 066.

Waitakere Trust Open, July 6 and 7. Kelson Community Centre. Contact: R W Smith, 2 Autumn Avenue, Glen Eden, Auckland 7.

All Wellington, 10-11 August and 17-18 August. 7 rnds. 8-player stream, rest in swiss (accelerated). Probably 40 in 2.

South Island Champs. Nelson, 26-31 August.

Congress, Dunedin 28 December to 9 January 1992.

COMBINATIONS

We have two reasons for publishing this game (apart from its value as a game).

Firstly, the Congress report showed three losses by Jonathan Sarfati and none of his wins so that this is a sort of compensation to him. The other reason is that we believe many readers like "Find the Combination" articles.

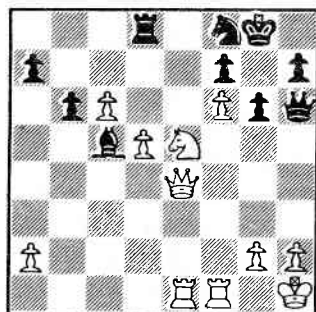
Doing a page of those when they are available is fine; frantically searching for examples to fill a page is not. Accordingly, we shall try putting in individual "combinations" as fillers or to break up stories that might be considered tedious by some. Try is the operative word; we welcome comments, better still, combinations!

From the Harbour City 60/60 tourney 12/5/91.

J Sarfati - R Dive

1 e4 e5 2 Nf3 Nf6 Hands up anyone who has seen Dive play anything else. **3 Nxe5 d6 4 Nf3 Nxe4 5 d4 d5 6 Bd3 Be7 7 0-0 Nc6 8 c4 Nf6 9 cxd5 Nxd5 10 Nc3 0-0** One book says advantage to White but = if ...Bg4 had been played earlier; another gives **11 Qb3 N5b4 12 Be4. 11 Re1 Nxc3 12 bxc3 Bf6 13 Rb1 b6 14 Bf4 Bb7 15 d5 Ne7 16 c4 Ng6 17 Bg3 Be7 18 Qc2 Bd6 19 Ne5 Re8 20 f4 Qf6 21 Rf1 Nf8** Sarfati suggested the immediate **21...c6** but put a query mark on the

same idea at move 22. The difference, if we guess right, is that White does not have a rook on e1 at the 21st. See next note. **22 Rbe1 c6?** It worked a move ago but now if **23 dxc6 Bxc6 24 Nxc6 Bc5+ 25 Kh1 Qxc6** White has **26 Be4** winning the exchange. **23 dxc6 Bc8 24 Be4 Rb8 25 Bd5 Be6 26 Kh1 Red8** An unfortunate square, as it turns out. **27 f5 Bxd5 28 cxd5 Rbc8 29 Qe4 Bc5 30 Bh4 Qh6 31 Bxd8 Rxd8 32 f6 g6** Taking the pawn looks dangerous. Anyway, what can White do with every square defended?



33 Nxf7! Kxf7 34 Qe7+!! Bxe7 35 fxe7+ Ke8 36 exf8Q#

Well done, Jonathan. That's the kind of finishes we like to see.

Before anyone jumps up and down we stress that we also like positional or strategic ones as well. Being a romantic, we just prefer the creative juxtaposition of ideas and material.

NZCA Active Player Rating List for 1/5/91 (539 players)

The tournaments rated this period were the NZ Championships, NZ Reserve, NZ Major Open, NZ Women's Championship, NZ Junior Championship, Otago, Civic and Auckland Easters, Club Championships for Papatoetoe, Invercargill, Upper Hutt, Wellington, Civic and Canterbury, the Papatoetoe and Civic Summer Cups, and the Wellington Petherick.

The numbers in brackets refer to the number of games rated this period.

1	MARTIN B M S	OT (6)	2328	61	ION G J	NS	1926
2	SUTTON R J	OT (17)	2300	62	GOFFIN P B	AC	1923
3	DIVE R J	CI (31)	2297	63	TUFFERY P B	NP (17)	1912
4	KER A F	CI (26)	2293	64	WALDEN G J	HP (11)	1908
5	NOKES R I		2291	65	VAN GINKEL J P	NE	1907
6	GARBETT P A	NS (7)	2290	66	FOSTER F M	(7)	1907
7	SARAFU O	NS	2280	67	BAUMGARTNER R	PT	1907
8	SARFATI J D	WE (11)	2246	68	MARNER G	HC	1905
9	APTEKAR L	CI (9)	2243	69	GARNETT L	HH	1897*
10	SMITH R W	WT	2239	70	COOPER D J	PN	1889
11	DREYER M P	AC	2221	71	HART S	PT	1885
12	GREEN P R	AC (7)	2220	72	LYNN K W	HA	1884
13	GREEN E M	NS	2216	73	SUTHERLAND J L	CA (6)	1875
14	SPAIN G A	TE (11)	2211	74	ABRAHAMSON P	CA (32)	1874
15	DUDENKOV A	CI (15)	2200	75	MONRAD P G	HC	1873
16	HAMEL M	CI	2174	76	FRANKEL Z	WE (9)	1873
17	LOVE A J	OT (11)	2171	77	MOOI K O	WE (6)	1866
18	STUART P W	NS (11)	2158	78	SIMS I M		1866
19	LUKEY S G	CA	2147	79	POMEROY D M		1864
20	NOBLE M F	HC	2126	80	COLLINS P W	HC (9)	1863
21	WHALEY M G	NS	2116	81	WIGBOUR M	CC	1862
22	COOPER P R		2106	82	NOTLEY D G	HP	1858
23	FREEMAN M R	NP (7)	2084	83	FERGUSON R T	UH	1857
24	WEIR P B	NS	2080	84	EAST S	PT (27)	1855
25	HOPEWELL N H	AC	2079	85	VAN PELT J	WT	1855
26	BOYD K M	OT (17)	2079	86	CONNOR B P	HV	1852
27	WEEGENAAR D P	CA	2075	87	SIMS M T	UH	1847
28	FITZPATRICK S P	WT (11)	2072	88	LIM B	AC	1837
29	REYN I	CI (9)	2069	89	ALDRIDGE A L	CI (14)	1835
30	SPENCER-SMITH G J	NS (6)	2064	90	MCDONALD J A	CI (17)	1835
31	DOWDEN R A	(17)	2062	91	VETHARANIAM P A R	WA (11)	1830
32	ROBINSON J P	WT (11)	2045	92	SINTON P J	OT	1828
33	ALEXANDER B J	CA	2042	93	WHITLOCK H P	WA	1819
34	STEADMAN M V R	AC (11)	2042	94	BRIMBLE M T	WT	1819
35	KER C M	HC (25)	2039	95	BLAXALL N	PT	1819
36	NIJMAN B	CA	2032	96	DORNE W	UH	1816*
37	MCKENZIE P D	CA	2031	97	CATER J E	(11)	1816
38	CORNFORD L H	AC	2029	98	WILLIAMS B M	AC	1814
39	BLACKBURN F	WT	2021*	99	CALCENA A S	RO	1813*
40	HAASE G G	OT	2021	100	BANKS G B	PT (16)	1812
41	METGE J N	(11)	2015	101	WHITEHOUSE L E	HA (7)	1806
42	POMEROY A J	CI (9)	2006	102	TURNER M G	CA (23)	1805
43	BARLOW M J	NS (11)	1995	103	EDWARDS D W	CA (6)	1799
44	HAWKES P D	CI	1990	104	BLAXALL C S	PT	1794
45	CARPINTER B A	CI	1987	105	MULLAN A B	CI	1794
46	WHEELER B	AC (11)	1987	106	O'STOCHRU M	OT (6)	1794
47	BAKER C P	CA	1985	107	NIJMAN A J	CA	1780
48	WALSH B G	HA	1981	108	O'BOYLE D	UH (9)	1773
49	VAN DER HOORN M W	HC (10)	1980	109	POW K	AS	1772
50	ELLIOT D B	NS (17)	1979	110	RAWNSLEY L D	AC	1769
51	JOHNSTON A J	CI (6)	1977	111	EVANS D	NS (11)	1755*
52	HART R	NS	1962	112	FOORD M R R	OT	1750
53	GIBBONS R E	AC	1960	113	MACKWAY-JONES R	IN (16)	1750
54	BENNETT H P	HA	1959	114	SMITH V J	WT (7)	1748
55	SPILLER P S	HP (11)	1955	115	SCARF R	AS	1748
56	DUNN P	CI (14)	1952	116	OKEY K M	NP (11)	1747
57	GOODHUE N	HV (6)	1949	117	RUPASINGHE S D	WE (25)	1744
58	MCNALLY I	AC (10)	1946	118	VAN NOBELEN R	CA (7)	1737
59	JORDAN A W	CI (9)	1946	119	ADAMS J M	CI	1737
60	STEVENSON T	WE	1939	120	JEFFRIES A	CA	1736

409	GARLAND M	AC	1337	481	BRIDGER M	UH (7)	1217
410	WINTER W	UH (7)	1334	482	MCGURK A	IN (10)	1215
411	BRAS C	CA	1330	483	TURNER P	PT (17)	1214
412	RENOUF T	PT (18)	1330	484	HAY V	OT	1213
413	PATTISON N	PT (18)	1329	485	HAFETA H	WT	1212*
414	LUI E	HA	1326*	486	BARKER A	UH (11)	1211*
415	HOLDO K	CA	1326*	487	NEAL R M	PT (14)	1209
416	DONALDSON J	UH	1324*	488	GALES A E	NS	1205
417	WALLACE D	CA	1323*	489	COSTELLO D	WE	1205*
418	MILLS M	PT	1321	490	SULLIVAN B	PK (16)	1204
419	BOWLER R	NP	1320	491	TWEDDEL E	(7)	1202
420	MCCARTHY P D	PT (18)	1319	492	LEIH R	PK	1200
421	KIRKMAN M	AC	1319*	493	TEW J	AS	1199*
422	SOUTHGATE B	CI (14)	1319	494	TRAN J	PT (10)	1195*
423	IVANOV Z	(16)	1318	495	BROWN M		1192*
424	SERONG J	OT	1317*	496	OLSEN S	PT (10)	1181*
425	DAY B		1313*	497	MAXWELL J W	KP	1181*
426	EICHHOLZ E	UH	1313*	498	RAKOCZY G	RO	1181
427	PATERSON S		1310*	499	BRADY P	NS	1176*
428	ALES H	NS	1310	500	JONES G M	NS	1176
429	METGE R	WT (33)	1310	501	HEERDEGEN P	PT	1174*
430	JOYCE C	OT	1308*	502	BOEKHOLT E	UH (7)	1167*
431	ROSE P	CI (2)	1308*	503	CAMERON D	OT (5)	1167
432	CLARK R	CA	1307	504	MULLIGAN E	(7)	1164*
433	KWOK A	OT	1305	505	LUCAS P	AS	1163*
434	GONIN R C E	OT	1305	506	HOLDEN F		1162*
435	GILLESPIE J G	CI (18)	1303	507	CASSIDY M	UH	1159*
436	BIDDLE S	WT	1301*	508	HOLDEN C		1156*
437	BOROVSKIS J	HP (11)	1299	509	WILLIAMS B	OT	1154*
438	STEVENS B S	OT (5)	1297	510	PETRASICH T	WT	1145*
439	GUTHRIE D W	OT (6)	1297	511	HARRIS B	OT	1142*
440	CHANG A R	OT	1296	512	NATH V	IN	1140*
441	PATSTON G	CA	1296*	513	EVERITT T H	OT	1139*
442	CROSLAND G W	WT	1294	514	WONG K	NS	1134
443	GROOTHUIZEN P	PT (18)	1291	515	MILLS G	KP	1133
444	CHAMLEY G	UH	1285	516	FROST P	OT	1126*
445	FADDY J	OT	1282*	517	WEBBER C H	CI (11)	1125
446	SMITH A	IN (10)	1278*	518	SANDERS J	OT	1123*
447	HELLYAR M	AC	1275	519	VINCENT D A	OT	1119*
448	FERRIS P	PT	1271*	520	CATER A	WT (11)	1117*
449	WILKES G	OT	1269*	521	SULLIVAN G J	UH (6)	1113
450	PATTON A	OT	1269	522	COLEMAN G	PT (10)	1111
451	WALKER C	WT	1266	523	MCNABB M	CA	1103*
452	VAN ZOOMEREN J	OT	1265	524	MCINTYRE I M	NS	1101*
453	STOREY K	PT (16)	1265	525	HUDSON C	PK	1100*
454	TURNBULL J	PT	1261*	526	TURNER B	PT	1077
455	EDMONDS L G	HP (11)	1260	527	WHITE S J	UH	1064
456	STUBBS	(11)	1260*	528	MICHAELSON	(11)	1063*
457	BARTOCCI K D	AC (10)	1259	529	OLASA J	PN	1056*
458	PATEL S	AC	1257*	530	NEILSON S	TE (7)	1049*
459	HAYES R	KP	1255*	531	MISA A	OT	1047
460	HARRIS K	UH	1254	532	SIM M	CA	1039*
461	ATKINSON J	CA (6)	1250*	533	CHANDLER B	UH	1032*
462	RAWNSLEY D C	HP	1249	534	UTTING M	NS	1028*
463	NEWMAN B	UH (8)	1247	535	MACINTOSH B	OT	1026*
464	LAMBERT C	PT (11)	1240	536	WILTON H	NS	1023*
465	HUDEPOHL H	UH (7)	1240*	537	PRATT J	DP	1004*
466	JONES S	OT	1240*	538	SHAW R	KP	1000
467	ATKINSON G	PT (6)	1237*	539	SINGH N		948*
468	MISA G	OT	1236				
469	MCRAE J	PT (10)	1233				
470	WHITTLE J	HA	1231*				
471	OLSEN P	PT (17)	1230				
472	WOODHAMS T	DP	1229*				
473	VAN DER MEY P F	NS	1229				
474	COURTNEY H	AC (7)	1229				
475	CHAPMAN J	PN	1228*				
476	SAMUELS T	WT	1227*				
477	WATSON L	MM	1223*				
478	WILLIAMS R G	WT	1220				
479	BOSLEY J	HP	1220*				
480	JOHNS D	NS	1218*				

LINARES 1991

The 9th Linares GM tournament in February-March was easily the strongest in the series. The average rating of 2658 made it category 17, a level previously reached by only two other tournaments, both quadrangular events in Amsterdam 1988. Thus Linares 1991 has a real claim to being the strongest tournament in chess history.

Eleven of the top 16 on the 1 January FIDE rating list were playing, including the top four; the only

player rated under 2600 was Ljubojevic (2590). It should be noted, however, that inflation of FIDE ratings over the past few years made such an event possible - in 1988, for instance, a category 17 tournament of 14 players would not have been possible. In the last two years the top ratings have risen by almost a whole category (25 points) and we may not have to wait too long for a tournament of category 18!

LINARES 1991

			1	2	3	4	5	6	7	8	9	10	11	12	13	14	
1	Ivanchuk	USR G 2695	x	1	½	½	½	½	½	1	½	1	1	1	½	1	9½
2	Kasparov	USR G 2800	0	x	1	½	½	½	½	½	1	½	1	1	1	1	9
3	Belyavsky	USR G 2640	½	0	x	1	½	0	1	0	0	1	1	1	1	1	8
4	Yusupov	USR G 2605	½	½	0	x	1	1	½	½	½	0	1	½	½	1	7½
5	Speelman	ENG G 2610	½	½	½	0	x	½	½	1	½	½	½	1	1	1	7½
6	Salov	USR G 2645	½	½	1	0	½	x	½	½	½	1	½	0	½	1	7
7	Timman	NLD G 2630	½	½	0	½	½	½	x	½	0	1	½	1	½	1	6½
8	Karpov	USR G 2725	0	½	1	½	0	½	½	x	0	0	½	1	1	1	6½
9	Ljubojevic	YUG G 2590	½	0	1	½	½	½	½	1	x	½	0	0	1	0	6
10	Anand	IND G 2635	0	½	0	1	½	0	1	1	½	x	0	0	½	1	6
11	Gurevich M.	USR G 2650	0	0	0	½	0	½	1	1	1	1	x	1	½	1	6
12	Gelfand	USR G 2700	0	0	0	½	½	1	½	0	1	1	0	x	0	1	5½
13	Ehlvest	USR G 2650	½	0	0	½	0	½	0	0	0	½	½	1	x	0	3½
14	Kamsky	USA G 2640	0	0	0	0	0	0	½	0	1	0	0	0	1	x	2½

Whatever the statisticians decide this tournament will always be remembered among the greatest ever thanks to the tremendous fighting spirit shown by all the players. Nigel Short, who declined his invitation to play on the grounds that he had no wish to play in "a Soviet Championship", referred to the combative play as "acid-house chess."

The scene was set right at the start when Vassily Ivanchuk wiped out Gary Kasparov's Sicilian in the first round. Karpov later commented that nobody had administered such a beating to the world champion in the last five years.

If the former champion aimed to take advantage of his bitter rival's setback, his hopes soon turned to ashes. After beating an out-of-form Jaan Ehlvest in round one Karpov over-pressed in the next two rounds and ended with back-to-back losses against Viswanathan Anand and Ljubomir Ljubojevic. After a fourth round draw with Yusupov, as white, came a

third loss at the hands of Ivanchuk who thus became the first player to defeat Kasparov and Karpov in the same tournament.

At that point Alexander Belyavsky shared the lead with Ivanchuk on 4/5 but, after their mutual draw in round 6, Belyavsky scored two more wins to take an undisputed lead.

In round 9 Kasparov beat Belyavsky to move within half a point of the once again joint leaders and in the tenth round he caught up with his win over the hapless Ehlvest.

Round 11 saw the end of Belyavsky's challenge for first place as he went down to Valery Salov while Ivanchuk defeated Mikhail Gurevich and Kasparov drew with Anand. Belyavsky had the draw in hand at move 35 but blundered.

There was no change at the top in round 12 as all three contenders won although in very different fashion. Ivanchuk won in a mere 18 moves when he trapped Gelfand's knight while Belyavsky won a long ending against

Gata Kamsky who thereby recorded his tenth loss. The game between Ljubojevic and Kasparov was a tragedy for the Yugoslav. Although the world champion was first to gain an advantage a blunder allowed Ljubojevic a chance to exchange queen's and enjoy a rook advantage. Instead Ljubo himself blundered giving his opponent perpetual check; yet another lemon cost him the other half-point as well.

Thus the scores going into the final round were: Ivanchuk 9, Kasparov 8½, Belyavsky 8, Speelman and Yusupov 7. The pairings seemed to favour Kasparov as he had white against Yusupov while Ivanchuk was black versus Timman. Belyavsky had the unenviable task of playing black against Karpov.

After the Timman-Ivanchuk game ended in a draw Kasparov made a determined effort to beat Yusupov but the latter defended accurately to gain the half-point at move 40 and share fourth place with Speelman who drew with Ljubojevic.

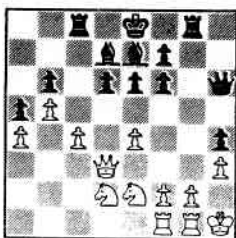
Karpov's win brought him back to 50% for the first time since round 2. It must be a long time since the former world champion lost four games in the same tournament.

Ivanchuk will gain over 20 rating points for his victory and should open up a respectable gap over Karpov and erstwhile rival for third ranking Boris Gelfand who joins Karpov and Kamsky as the big losers at Linares.

Ivanchuk (22) looked more than ever like the next world champion but his lack of experience in one-on-one match play will probably cost him any chance of realising this ambition in the current cycle.

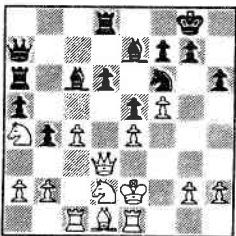
Few of the games lacked interest so we present a rather larger selection than usual.

IVANCHUK - KASPAROV, Sicilian:
 1 e4 c5 2 Nf3 d6 3 Bb5+ Nd7 4 d4 Ngf6 5 0-0 cxd4 6 Qxd4 a6 7 Bxd7+ Bxd7 8 Bg5 h6 9 Bxf6 gxf6 10 c4 e6 11 Nc3 Rc8 12 Kh1 h5 13 a4 h4 14 h3 Be7 15 b4 a5 16 b5 Qc7 17 Nd2 Qc5 18 Qd3 Rg8 19 Rael Qg5 20 Rg1 Qf4 21 Ref1 b6 22 Ne2 Qh6



Qf6+ Kh7 38 Rxh4+, 1 - 0.

ANAND - IVANCHUK, Sicilian Najdorf:
 1 e4 c5 2 Nf3 d6 3 d4 cxd4 4 Nxd4 Nf6 5 Nc3 a6 6 Bc4 e6 7 0-0 Be7 8 Bb3 0-0 9 f4 b5 10 f5 b4 11 Na4 e5 12 Ne2 Bb7 13 Ng3 Nbd7 14 Qe1 a5 15 c4 Qc7 16 Qe2 Rfc8 17 Bg5 Nc5 18 Rac1 h6 19 Be3 Ncd7 20 Bf2 Ra6 21 Rc2 Qb8 22 Re1 Qa8 23 Qd3 Ng4 24 Nf1 Ndf6 25 Nd2 Nxf2 26 Kxf2 Bc6 27 Rcc1 Qa7+ 28 Ke2 Rd8 29 Bd1



29...d5! 30 cxd5 Nxd5 31 exd5 Rxd5 32 Qb3 Bg5 33 Rc2 Bxd2 [34 Rxd2 Bb5+ and 35... Rxd2], 0 - 1.

IVANCHUK - GELFAND, Grünfeld Defence:
 1 d4 Nf6 2 c4 g6 3 Nf3 Bg7 4 g3 0-0 5 Bg2 d5 6 0-0 dxc4 7 Na3 c3 8 bxc3 c5 9 e3! [Adorian's move which has claimed many victims] 9... Nc6 10 Qe2 Qa5 11 Bb2 Nd5 12 Rac1 b6 13 Nd2 e6 14 Nb3 Qa6 15 c4 Ndb4 16 Nb5 Qa4 17 Nc3 Qa6 18 a3, 1 - 0.

GUREVICH - KASPAROV, Nimzoindian:
 1 d4 Nf6 2 c4 e6 3 Nf3 b6 4 Nc3 Bb4 5 Qb3 c5 6 a3 Bxc3+ 7 Qxc3 0-0 8 g3 cxd4 9 Qxd4 Nc6 10 Qh4 Bb7 11 Bg2 Rc8 12 Bd2 Na5 13 Bxa5 bxa5 14 b4 Qc7 15 c5 d6 16 Rc1 axb4 17 axb4 dxc5 18 Rxc5 Qb6 19 Rxc8 Rxc8 20 0-0 Ba6 21 Ne5 [White has to give up a pawn as 21...Rc4 was also a threat] 21...Bxe2 22 Re1 Bb5 23 Qf4 h6 24 h4 Be8 25 g4 Rd8 26 g5 Rd4 27 Qf3 hxg5 28 hxg5 Nd5 29 Rcl Qb8 30 Qg3 Nf4 31 Qe3 Qd8 32 Nf3

23 c5! Rxc5 24 Nc4 Kf8 25 Nxb6 Be8 26 f4 f5 27 exf5 Rxf5 28 Rc1 Kg7 29 g4 Rc5 30 Rxc5 dxc5 31 Nc8 Bf8 32 Od8 Qg6 33 f5 Qh6 34 g5 Qh5 35 Rg4 exf5 36 Nf4 Qh8 37

Rxb4 33 Bf1 Nd5 34 Qxa7 Rg4+ 35 Kh1 Nf4 36 Qb7 Kh7 37 Qe4+ f5! 38 gxf6+ Bg6 39 Qb7 Qxf6 40 Re1 Nd5 41 Bg2 Nf4 42 Bf1 Nd3, 0 - 1.

KASPAROV - BELYAVSKY, English Opening:
 1 c4 e6 2 Nc3 Nf6 3 e4 c5 4 e5 Ng8 5 Nf3 Nc6 6 d4 cxd4 7 Nxd4 Nxe5 8 Ndb5 a6 9 Nd6+ Bxd6 10 Qxd6 f6 11 Be3 Ne7 12 Bb6 Nf5 13 Qc5 d6 14 Qa5 Qd7 15 f4 Nc6 16 Qa3 e5 17 Bd3 0-0 18 0-0 exf4 19 Rxf4 Nfe7 20 Rd1 Ng6 21 Rff1 Nge5 22 Be4 Qf7 23 b3 Be6 24 Qxd6 Kh8 25 Qc7 Qxc7 26 Bxc7 Rf7 27 Bb6 Re8 28 h3 Rd7 29 Nd5 Rc8 30 g4 Ng6 31 Kh2 Nce5 32 a4 Rd6 33 a5 Nd7 34 Nc7, 1 - 0.

GELFAND - BELYAVSKY, Queen's Gambit:
 1 Nf3 d5 2 d4 Nf6 3 c4 e6 4 Nc3 Be7 5 Bf4 0-0 6 e3 c5 7 dxc5 Bxc5 8 Qc2 Nc6 9 a3 Qa5 10 0-0-0 Bd7 11 g4 Rfc8 12 Kbl b5 13 cxb5 Ne7 14 Nd2 Qd8 15 Nb3 Ne4 16 Nxc5 Rxc5 17 Be5 Nxc3+ 18 Bxc3 Bxb5 19 Bxb5 Rxb5 20 h4 Rc8 21 h5 Qd6 22 Qa4 Qb8 23 Be5 Qb7 24 g5 Nc6 25 Rc1 d4 26 Bxd4 Rb8 27 Bc3 Rxb2+ 28 Ka1 Rb6 29 g6 Ra6 30 gxf7+ Kxf7 31 Qf4+ Kg8 32 Qd6 Nd4, 0 - 1.

BELYAVSKY - TIMMAN, King's Indian:
 1 d4 Nf6 2 c4 g6 3 Nc3 Bg7 4 e4 d6 5 f3 0-0 6 Be3 e5 7 Nge2 c6 8 Qd2 Nbd7 9 0-0-0 a6 10 h4 b5 11 h5 Qa5 12 Bh6 Bxh6 13 Qxh6 b4 14 Nb1 Qxa2 15 Ng3 Nb6 16 c5 Nc4 17 Rd2 Nxd2 18 Nxd2 Qa1+ 19 Nb1 Be6 20 cxd6 Qa5 21 Qg5 Qd8 22 dxe5 Nd7 23 Qh6 g5 24 Nf5 Bxf5 25 exf5 f6 26 Bc4+ Kh8 27 e6 Ne5 28 Rd1 Nxc4 29 e7 Qe8 30 Qxf8+ Qxf8 31 exf8Q+ Rxf8 32 Rd4 Ne5 33 Nd2 Kg7 34 Ne4 Kf7 35 Nc5 Ra8 36 Rxb4 Ra7 37 Rd4 Ke8 38 Kc2 a5 39 Kc3 Kd8 40 Ne6+ Kd7 41 Nc5+ Kd8 42 Re4 h6 43 b3 Ra8 44 g3 Rb8 45 Rxe5 fxe5 46 f6 Ke8 47 Kd3 Ra8 [48 Ke4 Kf7 49 Kxe5 Re8+ 50 Kf5 and 51 d7], 1 - 0.

KASPAROV - YUSUPOV, English Opening:
 1 c4 f5 2 g3 Nf6 3 Nc3 g6 4 Bg2 Bg7 5 d3 d6 6 e3 0-0 7 Nge2 e5 8 0-0 Nbd7 9 Rb1 Kh8 10 b4 a6 11 Bb2 Nh5 12 f4 Ndf6 13 Qd2 c6 14 a4 Qe7 15 b5 axb5 16 axb5 Bd7 17 h3 Rfe8 18 Ra1 h6 19 e4 Rxa1 20 Rxa1 Qd8 21

exf5 Bxf5 22 Kh2 exf4 23 Nxf4 Nxf4 24 Qxf4 Nh5 25 Qd2 Kh7 26 Ne4 d5 27 Bxg7 Kxg7 28 Qb2+ Kg8 29 cxd5 cxd5 30 Nc3 Qc7 31 Bxd5+ Kh7 32 Rg1 Re3 33 Ne4 Bxe4 34 Bxe4 Nxb3 35 Bxg6+ Kxg6 36 Qf2 Rxd3 37 Rxb3+ Rxb3 38 Qxg3+ Qxg3+ 39 Kxg3 Kg5 40 b6, ½ - ½.

SPEELMAN - KARPOV, Nimzoindian:
 1 d4 Nf6 2 c4 e6 3 Nc3 Bb4 4 e3 0-0 5 Bd3 d5 6 a3 Bxc3+ 7 bxc3 dxc4 8 Bxc4 c5 9 Ne2 Nc6 10 0-0 e5 11 Rb1 Qc7 12 Ba2 Rd8 13 Qc2 b6 14 Ng3 exd4 15 cxd4 cxd4 16 exd4 Be6 17 Bxe6 fxe6 18 Bg5 Rac8 19 Bxf6 gxf6 20 Rbc1 Rxd4 21 Rfe1 Qf7 22 Qc3 Rdd8 23 Ne4 e5 24 Qg3+ Kh8 25 Qh4 Nd4 26 Rxc8 Rxc8 27 Nxf6 Qg6 28 Ng4 Ne2+ 29 Kh1 Nf4 30 h3 Re8 31 Rd1 Qg7 32 Rd8 Rg8 33 Rxb6+ Qxb6 34 Qf6+ Qg7 35 Qd8+ Qg8 36 Qe7 Ng6 37 Qxa7 Qe6 38 Qb8+ Kg7 39 Qc7+ Kh8 40 Nh6 Qf6 41 Qc8+ Kg7 42 Nf5+ Kf7 43 Qd7+ Kf8 44 g3 h5 45 h4 Kg8 46 Kg2 Nf8 47 Qd5+ Kh7 48 Qb7+ Kg8 49 Ne7+ Kh8 50 Nd5 Qd6 51 Qf7 Ng6 52 Nf6, 1 - 0.

GUREVICH - TIMMAN, Nimzoindian:
 1 d4 Nf6 2 c4 e6 3 Nc3 Bb4 4 Qc2 c5 5 dxc5 Na6 6 a3 Bxc3+ 7 Qxc3 Nxc5 8 b4 Nce4 9 Qd4 d5 10 c5 b6 11 f3 bxc5 12 bxc5 Qa5+ 13 Qb4 Qc7 14 fxe4 Rb8 15 Qa4+ Bd7 16 c6 0-0 17 Bd2 Bxc6 18 Qa5 Qe5 19 Rc1 Nxe4 20 Nf3 Qb2 21 e3 Bb5 22 Qb4 Bxf1 23 Qxb2 Rxb2 24 Rxf1 Rfb8 25 Bc3 Rxb2 26 Be5 Ra8 27 Rg1 Nd2 28 Rxb2 Nxf3+ 29 Kf1 Nxe5 30 Rc7 Nc4 31 Re2 Nxa3 32 Ra2 Nb5 33 Rb7 Nd6 34 Raxa7 Rf8 35 Rd7 Ne4 36 Ke2 Nf6 37 Rdc7 g6 38 Kf3 g5 39 Re7 h5 40 Rab7 Ng4 41 h3 Ne5+ 42 Kg3 Ng6 43 Rec7 Kg7 44 e4 dxe4 45 Rb4 h4+ 46 Kh2 Ra8 47 Rxe4 Nf4 48 Re5 Kg6 49 Rc3 f5 50 Rf3 Kf6 51 Rb5 Ra4 52 Rb8 g4 53 hxg4 fxb4 54 Rf8+ Ke5 55 Rf1 g3+ 56 Kgl h3 57 Re1+ Re4 58 Ra1 Ne2+ 59 Kh1 g2+ 60 Kh2 Rg4 61 Kxh3 Rg3+, 0 - 1.

KARPOV - GELFAND, Grünfeld Defence:
 1 d4 Nf6 2 c4 g6 3 Nf3 Bg7 4 g3 0-0 5 Bg2 c6 6 Nc3 d5 7 cxd5 cxd5 8 Ne5 Bf5 9 0-0 Ne4 10 Be3 Nxc3 11 bxc3 Nc6 12 Qb3 e6 13 Nxc6 bxc6 14

Qa3 Re8 15 Bf4 e5 16 Bxe5 Bxe5 17 dxe5 Rxe5 18 e3 Be4 19 Rfd1 Qf6 20 Rd4 h5 21 h3 Rb8 22 Rad1 Bxg2 23 Kxg2 Qe7 24 Qxe7 Rxe7 25 Rld2 Rb6 26 c4 dxc4 27 Rxc4 Kg7 28 Rdc2 Rc7 29 g4 hxg4 30 hxg4 Kf6 31 Kg3 Ke6 32 a4 Kd7 33 g5 Ra6 34 Rd4+ Ke8 35 Rc5 Rb6 36 Kf4 Rd7 37 Rxd7 Kxd7 38 Ke5 Ke7 39 f4 Rb4 40 Ra5 Rb7 41 e4 Rc7 42 Rc5 Rc8 43 Rc3 Re8 44 Rc4 Rc8 45 Rb4 Rc7 46 a5 Kd7 47 Rb3 Ke7 48 a6 Kd7 49 Kf6 Kc8 50 Rh3 Rd7 51 f5 gxf5 52 exf5 c5 53 Rc3 Rc7 54 g6 fxxg6 55 fxxg6 Kd7 56 g7 Rc8 57 Rg3, 1 - 0.

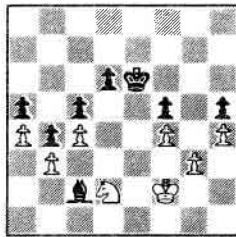
LJUBOJEVIC - KARPOV, Ruy Lopez:

1 e4 e5 2 Nf3 Nc6 3 Bb5 a6 4 Ba4 Nf6 5 0-0 Be7 6 Re1 b5 7 Bb3 d6 8 c3 0-0 9 h3 Bb7 10 d4 Re8 11 Nbd2 Bf8 12 Bc2 g6 13 d5 Nb8 14 b3 c6 15 c4 a5 16 dxc6 Bxc6 17 cxb5 Bxb5 18 Nc4 Na6 19 Bg5 Nb4 20 Bb1 Bxc4 21 bxc4 h6 22 Bc3 Qc7 23 a3 Na6 24 Nd2 Nc5 25 Bc2 Reb8 26 Rb1 Qc6 27 Rxb8 Rxb8 28 Qa1 h5 29 Rb1 Rc8 30 f3 Kh7 31 Qc3 a4 32 Rb4 Be7 33 Qb2 Nfd7 34 Rb5 Bd8 35 Qb4 Bb6 36 Bf2 Ra8 37 Qb2 Ra6 38 Qb4 Ne6 39 Bxb6 Nxb6 40 Bd3 Nd7 41 Qc3 Qc7 42 Nb1 Qa7+ 43 Kh2 Ndc5 44 Rb4 Nd4 45 Bf1 Rb6 46 Rxb6 Qxb6 47 Qb4 Qd8 48 Qd2 Qf6 49 Kg1 Kg7 50 Be2 Qh4 51 Bd1 Qd8 52 Kf1 Qb6 53 Qb4 Qa7 54 Nc3 Nd3 55 Qb1

55...Nxf3 [A very tempting sacrifice. The rest of the game is quite exciting] 56 Qxd3 Qg1+ 57 Ke2 Qxxg2+ 58 Ke3 Nd4 59 Ne2 Qxxh3+ 60 Kd2 Qg2 61 Kc3 Ne6

62 Kb4 h4 63 Qxd6 Qxe4 64 Nc3 Qe3 65 Bxa4 h3 66 Bc6 h2 67 Be4? [Blundering the piece back, but White retains the advantage] 67...Qxe4 68 Nxe4 h1Q 69 Qxe5+ Kh7 70 Nf6+ Kh6 71 Ne4 Qb1+ 72 Ka5 Kh7 73 c5 Qe1+ 74 Kb6 Qb1+ 75 Kc6 Qd3 76 Nf6+ Kh6 77 Qe3+ Qxe3 78 Ng4+ Kg5 79 Nxe3 Kf4 80 a4 Kxe3 81 a5 g5 82 a6 g4 83 a7 g3 84 a8Q g2 85 Qg8 Kf3 86 Kd6 Nxc5 87 Kxc5 f5 88 Qg5, 1 - 0.

KARPOV - ANAND, English Opening:
1 Nf3 c5 2 c4 Nc6 3 Nc3 Nd4 4 e3 Nxf3+ 5 Qxf3 g6 6 b3 Bg7 7 Bb2 d6 8 g3 Rb8 9 Bg2 Nf6 10 h3 0-0 11 0-0 a6 12 Qe2 b5 13 d3 b4 14 Nd1 a5 15 a4 e5 16 e4 h5 17 h4 Ne8 18 Ne3 Nc7 19 Kh2 Ne6 20 Bh3 Bh6 21 Ng2 Bg7 22 Rae1 Rb7 23 Bxe6 Bxe6 24 f4 Bg4 25 Qd2 Re7 26 Ne3 f5 27 exf5 gxf5 28 Nd5 Re6 29 Qf2 Rfe8 30 Bc1 e4 31 dxe4 Rxe4 32 Rxe4 Rxe4 33 Re1 Rxe1 34 Qxe1 Kf7 35 Qd2 Bf3 36 Ne3 Be4 37 Bb2 Bxb2 38 Qxb2 Qf6 39 Qxf6+ Kxf6 40 Kg1 Bb1 41 Nf1 Bc2 42 Nd2 Ke6 43 Kf2



43...d5! 44 cxd5+ Kxd5 45 Ke3 Bd1 46 Kd3 Bxb3!, 0 - 1.

LJUBOJEVIC - GUREVICH, French Defence:

1 e4 e6 2 d4 d5 3 Nd2 Nf6 4 e5 Nfd7 5 f4 c5 6 c3 Nc6 7 Ndf3 Qb6 8 h4 cxd4 9 cxd4 Bb4+ 10 Kf2 f6 11 Kg3 0-0 12 Bd3 Nxd4 13 Nxd4 fxe5 14 fxe5 Nxe5 15 Bc2 Ng6 16 Bxxg6 hxg6 17 Nde2 Qf2+ 18 Kh3 Bd6 19 Qb3 e5+ 20 Kh2 Qxxh4+ 21 Nh3 Bxxh3, 0 - 1.

SALOV - GELFAND, Grünfeld Defence:

1 d4 Nf6 2 c4 g6 3 Nf3 Bg7 4 g3 0-0 5 Bg2 c6 6 0-0 d5 7 cxd5 cxd5 8 Nc3 Ne4 9 Nxe4 dxe4 10 Ne5 Qd5 11 b3 Nc6 12 Bb2 Be6 13 e3 Rfd8 14 Nd3 f5 15 Nf4 Qd7 16 g4 Bf7 17 gxf5 Qxf5 18 Ne2 e5 19 Ng3 Qc8 20 d5 Bxd5 21 Qe2 Be6 22 Nxe4 Bg4 23 Qc4+ Be6 24 Qc5 Bf8 25 Qc3 Bb4 26 Qc2 Be7 27 Rfd1 Rxd1+ 28 Rxd1 Bh3 29 Qc4+ Kg7 30 Ng3 Bxxg2 31 Kxxg2 h5 32 h3 h4 33 Ne4 Qf5 34 Nd6 Qg5+ 35 Kh2 Rf8 36 Ne4 Rxf2+ 37 Nxf2 Qg3+ 38 Kh1 Qxf2 39 Rf1 Qxb2 40 Qf7+ Kh6 41 Rg1 Qc2 42 Qg8 Bf6 43 Qf7 Qf5 44 Kg2 Bg7 45 Qxf5 gxf5 46 Rd1 Bf8 47 Rd7 Bc5 48 Kf3 b6 49 Rc7 Rf4+ 50 Ke2 Ne7 51 Rxa7 Nd5 52 a4 f4 53 a5 f3+ 54 Ke1 bxa5, 0 - 1.

★ ★ ★

NEW YORK

The relatively modest (for a large Swiss) score of 6½/9 was enough for an obscure Siberian GM, Alexander Goldin, to take an undivided first prize in the 1991 New York Open.

Sharing second place, on 6 points, were GM Adianto (RIN), GM de Firmian (USA), GM Dreev (USR), GM Ehvest (USR), GM Epishin (USR), IM I.Gurevich (USA), GM Kamsky (USA), GM Kudrin (USA), GM Lautier (FRA), GM Novikov (USR), GM Petursson (ICE), Remlinger (USA) & GM Wolff (USA).

GMs Dlugy (USA), Gulko (USA) and Yudasin (USR) were among the large group tied for 19th place on 5.

★ ★ ★

POLUGAEVSKY v J. POLGAR

Lev Polugaevsky lost the first game but won the battle in a training match versus youngest Polgar sister Judit on the Dutch Caribbean island of Aruba. The Soviet GM won games 2, 4 and 7 while the remaining games were drawn to make the final score 5 : 3. Here is the first game:

J. POLGAR - POLUGAEVSKY, Sicilian:

1 e4 c5 2 Nf3 d6 3 d4 cxd4 4 Nxd4 Nf6 5 Nc3 a6 6 f4 e6 7 Bd3 b5 8 Qf3 Bb7 9 g4 Nc6 10 Nxc6 Bxc6 11 a3 Be7 12 Be3 Nd7 13 0-0-0 Qc7 14 h4 Qb7 15 Bd4 0-0 16 g5 Rfe8 17 h5 b4 18 axb4 Qxb4 19 Ne2 Nc5 20 g6 fxxg6 21 hxg6 h6 22 Rdg1 Rac8 23 Kbl Nxd3 24 cxd3 Qb3 25 Bc3 e5 26 Nc1 Qe6 27 Qe3 Bf8 28 f5 Qf6 29 Be1 d5 30 Bh4 Qd6 31 f6 Re6 32 f7+ Kh8 33 Qg3 Ba4 34 Bf6 Rxc1+ 35 Rxc1 Rxf6 36 Rcg1 Rf1+ 37 Rxf1 dxe4 38 Rfg1 Qxd3+ 39 Qxd3 exd3 40 Re1 Bc2+ 41 Kc1, 1 - 0.

★ ★ ★

SAN FRANCISCO

The strongest round-robin in the U.S. for some years, the "Pan-Pacific Tournament" in March, was won quite convincingly by GM Eugenio Torre with 8/11. In the last couple of years the exploits of China's top players have overshadowed those of the Philippino

★ ★ ★

player so the return to form is all the more welcome.

Newest American GM Patrick Wolff took second prize in the category 11 tournament with 7 points and then followed: 3-6 GM Benjamin (USA), GM Christiansen (USA), GM Rogers (AUS) & GM Tal (USR) 6; 7 GM Fedorowicz (USA) 5½; 8-10 GM Adianto (RIN), GM Ftacnik (CZE) & GM Z.Polgar (HUN) 5; 11 IM Grefe (USA) 3½; 12 GM Browne (USA) 3.

★ ★ ★

BEIJING

The second Beijing Open, a 10-round Swiss, featured mainly east Asian players and a large group of Soviet players among whom GMs Vyzmanavin (2605) and Eingorn (2575) were strong favourites along with Tony Miles (2585), one of the very few western Europeans present. The English/U.S. grandmaster tied for first place with 7½ points but his co-victor was the untitled Soviet player Alexander Budnikov.

Sharing third place on 7 points were the Chinese pair of IM Ye Jiangchuan and Lin Weiguo while six players were tied on 6½: GM Eingorn (USR), GM Malaniuk (USR), IM Moskalenko (USR), GM Novikov (USR), Peng Xiaomin (PRC) and GM Smirin (USR). Vyzmanavin joined GMs Ardiansyah (RIN), Krogius (USR), Lerner (USR) & Ye Rongguang (PRC) among those on 6.

★ ★ ★

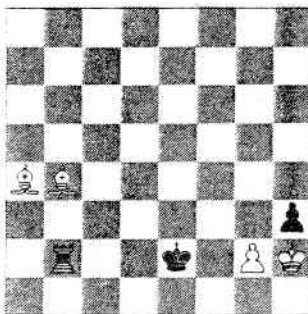
SYDNEY

The "Mercantile Mutual Grandmaster Classic" in April was Australia's strongest round-robin - category 10 (2477). The Czech GM Ljubomir Ftacnik won with 6½/9 while Philippino IM Antonio made a GM norm in tying for second with GM Rogers on 6. Then: 4 IM Wang Zili (PRC) 5½; 5 IM Johansen (AUS) 5; 6 GM van der Sterren (NLD) 4; 7-9 WGM Arakhmia (USR), Gedevanishvili (AUS) & IM Solomon (AUS) 3½; 10 IM West (AUS) 1½.

★ ★ ★

STUDY CORNER

Tigran Gorgyev
1st prize Tidskrift
Schack, 1968
(correction)



Win

Bc4 allows Rg2+) when 3...Ra3 leaves the bishop on c3 transfixed. 2 ... Ra3 Surely Black has speared something here. Any passive move permits the winning 3 g3. White shunning both the pin after 3 Kxh3? Ra3= and 3 g2xh3? with its pitfalls of promoting a rook's pawn escorted by the wrong-coloured bishop, should Black sacrifice. 3 Bc4+ Ke3 inferior are both 3...Kf2 4 Bd4+ and 3...Kd1 4 Bb2 where 4...Ra4 is thwarted by 5 Bb3+. 4 Bb4 The inaccurate 4 Bb2? fails to 4...Ra4 5 Bb5 (or Bb3) Rb4 6 Bc1+ Kf2=. Both bishops successfully sidestep the rook's lunges and simultaneously retaliate while Black replies in like suit. 4 ... Ra4 5 Bc5+ Ke4 After 5...Kd2 6 Bb3 Black's 6...Ra5 succumbs to 7 Bb4+ while 5...Kf4 6 Bb3 Ra5 7 Bd6+ also secures victory. 6 Bb5 Avoiding the book draw after 6 Bb3? Ra5 7 Bc2+ (if 7 Bb6 Rb5 8 Bc2+ Kd5 holds) Kd5 8 Bb4 (8Bb6 Rb5=) Rb5 9 Bb3+ Kc6 10 Ba4 h3xg2=. Thrust and... 6 ... Ra5 ...parry, but any alternative relinquishes both the initiative and the pawn. 7 Bc6+ Ke5 Now 7...Kd3 8 Bb4 Ra6 (otherwise h3 fails) 9 Bb5+ forks the rook while 7...Kf4 8 g3+ deprives Black of a saving resource and 7...Kf5 8 Bd7+ Ke5 9 Bb4 Ra7 10 Bxh3 is decisive. 8 Bb6 Ra6 The now familiar march continues but how will it end? White eschews 8 Bb4? Ra6 9 Bc3+ (both 9 Bb7 Rb6 10 Bc3+ Kd6= and 9 Bb5 Rb6 10 Bc3+ Kd5=) Kd6 10 Bb5 (here 10 Bb7 Rb6=) Rb6 11 Bb4+ Kc7 12 Ba5 h3xg2=. 9 Bc7+ Ke6 The rook is snared after 9...Kd4 10 Bb5 Ra7 (as is the black pawn upon 10...Ra2 11 Kxh3 or 10...Ra3 11 g3) 11 Bd6+. If 9...Kf5 then 10 Bd7+ skewers the infantryman on h3 who suffers the same fate after 9...Kf6 10 Bb5 Ra7 11 Bd8+. 10 Bb7 Ra7 Incorrect is 10 Bb5? Ra7 11 Bc4+ (neither 11 Bb8 Rb7 12 Bc4+ Kd7= nor 11 Bb6 Rb7 12 Bc4+ Kd6= compensate for the earlier error) Kd7 12 Bb6 (12 Bb8 Rb7=) Rb7 13 Bb5+ Kd6= when Black has confidentially exchanged volleys with White and is certain of a draw. 11 Bc8+ Ke7 Upon 11...Kd5 (or 11...Kf7) 12 Bb6 triumphs while 11...Kf6 12 Bd8+ with 13 Bxh3 is equally victorious. 12 Bb6 Ra8 13 Bxh3

And the extra pawn brings home the bacon. Observe that 13 Bb7? is inadequate against 13...Rb8 14 Bc5+ Kd7=.

A forced march, true, involving pivotal play with both sides anxiously eyeing g2, yet this miniature's economy and elegance evince an impression of the exquisite.

By Emil Melnichenko

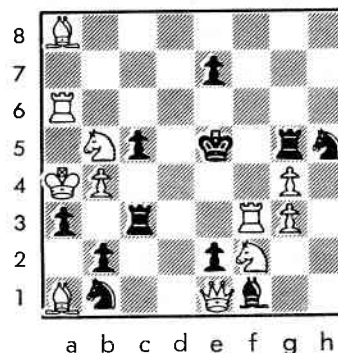
Tigran Gorgyev is one of the Soviet Union's heavyweight composers. Here is a favourite theme of his which he often re-worked.

Assuming the rook remains unscathed, note that a textbook draw ensues if Black captures either bishop or pawn. On the other hand, White wins only if both bishops and the soldier on g2 are saved. Gymnastics seem essential.

1 Bc3 With this counterattack White hopes to squeeze in time to capture on h3. Not 1 Bb5+? when 1...Kd1 2 Ba4+ Ke2 is one draw by repetition while 1 Ba3? Ra2 2 Bb5+ Kd1 3 Ba4+ Ke2 is another. 1 ... Ra2 Black returns the compliment with the understanding that any other move surrenders the pawn on h3. 2 Bb3 Here the trap that beckons is 2 Bb5+? Kd1 3 Kxh3 (unfortunately moving g2 is illegal and 3

BRITISH CHESS SOLVING CHAMPIONSHIP 1991-92

Sponsored by East West Consultants Ltd



Here is the starter problem for this year's competition, with a top prize of not less than 500 for the champion. Send White's first move only to **British Solving Championship, 76 Lambcroft Avenue, Mottingham, London, SE9 4PB**, postmarked no later than **30th June 1991**, marking your solution "New Zealand Chess". Successful entrants will compete in two, more difficult, postal rounds. The top UK-resident scorers will be invited to take part in the final at the Stafford Hotel, London in January 1992.

White to play and mate in two (against any defence).

A special prize of 50 will be awarded to the first randomly drawn correct solution to this starter problem. A further special prize of 50 will be awarded to the highest-scoring foreign competitor from the final postal round.

Solutions to this starter problem will only be supplied if a stamped addressed envelope is enclosed. (Presumably, Kiwis will have to supply an international reply coupon.)

BOOK REVIEW

By Ian McElwee

We asked Ian McElwee, a teacher, to review Pergamon's rerun of Chess For Children. He passed it on to some children (including his own) and this is the composite result.

Chess For Children, M J Richardson, Pergamon, 1990 \$22 approx.

This is an excellent introduction to chess, its background, its famous stories and its games. Though the book is intended as part of a series, in general it consists of a lot of essential information for the beginner. Chess For Children is beautifully illustrated and will delight many in the eight to 12 years age group. One mistake was noticed in this revised edition. It is on page 38 where a move in a complicated Ruy Lopez position has been omitted. While obvious to a player, beginners could be baffled. Otherwise the book is concise and exact - a welcome publication.

Zoch and Ian McElwee.

COMBINATIONS

This is the format we intend to use for the Find The Combination feature.

It too has been done on the 24-pin printer so definition is not quite what it could be

????1????

White to play and win.
Answer page 75

????2????

White to play and win.
Answer page 75

BLACK IS OK

By Andras Adorjan

GM Adorjan regularly supplies games on this theme. He sent two this time and a copy of his book Winning With The Grunfeld which was re-issued last year (about \$35 from NZCS).

Hungarian team ch 1989

Csom - Adorjan

1 d4 Nf6 2 g3 c5 3 d5 If 3 Nf3 then interesting is Qa5+!? followed by a) 4 c3 cxd4 5 Nxd4 Qd5!; b) 4 Bd2 Qb6; c) 4 Nc3 cxd4 5 Nxd4 Ne4 6 Bd2 Nxd2 7 Qxd2 Nc6 with a comfortable game for Black in all three cases. **3...b5 4 Bg2 d6 5 Nf3 5 a4 b4 6 Nf3 g6 7 0-0 Bg7 8 Re1 0-0 9 e4 Nbd7** led to an even position in Johanneson-Gligoric 1964. **5...g6 6 c4 a6!?** **7 a4 b4 7...bxc4** seems stronger: **8 Nfd2 a5 9 Nxc4 Na6** and Black is (more than) okay. **8 b3 Bg7 9 Bb2 0-0 10 Nbd2 Ra7 11 0-0 e5 12 dxe6!** Absolutely necessary. On 12 e4 (or Ne1) Ng4 White faces a difficult task; how to parry Black's kingside attack. The position differs from the King's Indian g3 Nc6 lines. The queen flank is closed so Black may mobilise all of his forces (like f5 - Raf7 -Nbd7 etc). **12...Bxe6 13 Ra2 13 Qc2? Bf5 (e4 Nxe4) 13...Re8 14 Ng5** On 14 Qa1 play may continue with **14...d5!** (worse are **14...Nc6 Ng5 Na5 16 Nxe6 Rxe6 17 e3** or **14...Bf5 15 Re1 15 cxd5 (Ng5 d4) 15...Bxd5 16 e3 (16 Re1 Rd7! > 17 e4? Bxe4 18 Nxe4 Rxe4) 16...Nc6**

17 Qb1 (17 Rc1 Na5 18 Rxc5 Nxb3 19 Rxd5 Qxd5) Na5 18 Ba1Qa8! and Black stands fine. **14...Bf5 15 Nh3** Logical, but maybe not the best. **15 Re1!?** h6 **16 Ngf3** or h3 **Rae7. 15...Bg4! 16 Re1 16 f3 Bxh3 17 Bxh3 Nc6 18 Re1 Rae7 19 e4 (19 Bg2 d5) Nh5** favours Black, just like **16 Nf3 Ne4 16...Rac7 17 Nf4 g5! 18 Bxf6** Alternatives are: a) **18 Nd5 Nxd5 19 Bxg7 Kxg7 20 Bxd5 Bxe2**; b) **18 Qa1 Nbd7 19 Nd5 Rxe2**; and the toughest to beat c) **18 h3 gxf4 19 hxg4 fxc3 20 f3 d5 21 cxd5 Qxd5 22 Bxf6 Bxf6 23 Ne4 Bd4+ 24 e3 Rxe4 24 fxe4 Bxe3+ 25 Kf1/h1 Qg5** with a tremendous attack (and 2 pawns) for the exchange. **18...Bxf6 19 Nd5 Rxe2 20 Rxe2 Bxe2?** A silly mistake that wins in six moves! Correct was **20...Rxe2 21 h3 (21 f3 Bd4+ 22 Kh1Qe8) 21...Bd4! 22 Ne4** (Only move since **22 hxg4 Rxf2 23 Kh1 Qf8** finishes) And now a) **22...Rxa2? 23 Qxg4 h6 24 h4** with a decisive attack! b) **22...Re4: 23 hxg4 Re6 24 Nb4**; c) **22...Rxf2 23 Qd4 Rg2+ 24 Rxc2 cxd4 25 hxg4 Nc6** and Black's advantage seems to be overwhelming. **21 Qe1 21 Nf6+ Qxf6 22 Ne4 Rxe4 23 Re2 Rd4** followed by **24...Nd7 21...Kg7 21...Kf8 22 Qb1! 22 Ne4?** Instead **22 Nfx6+ Qxf6** led to a position White could have held in two ways: a) **23 Nf1 Qc3 (Qe7 24 Ne3 Bd3 25 Rd2** gives White very good compensation) **24 Qcx3 bxc3 25 Rc2 (25 Ne3 Bd1!) Bxf1 26 Kxf1 a5 27 Rxc3 Nxa6 =**; b) **23 Nf3 Bxf3**

24 Qe8 Nc6 25 Qe3 Bxg2 26 Kxg2 Nd4 27 Rd2 = 22...Bd3 23 Rd2! Bxe4 24 Bxe4? **24 Re2!** still gave chances of survival (...Nc6 25 Rxe4 Rxe4 26 Bxe4 Nd4 27 Qd1 etc) **24...Nc6 25 Re2??** The last error. **25 Qb1 Nd4 26 f3** would put up some resistance. **25...Nd4 26 Re3 Rxe4 0-1.**

Combination 1: Hebden-Pichon 1 Rb8 Qxb8 2 Nxf6+ Kh8 3 Ng5 Rf8 (3...Re7 4 Qe4) 4 Qh5 h6 5 Qxf7 Nc5 6 Qg8+.

Combination 2: Bareev-Kupreichik 1 Ne6 N6h5 (fxe6 2 Rxc6+ Kf7 On Nxc6 3 Qxd2 - 3 Rg7+) 2 Qf8+ Kh7 3 Ng5#

19th **CIT** 40/40
Upper Hutt Civic Hall

6th JULY 1991
5 round swiss in 3/4 grades
Entry fees - A and B grades \$22
C grade \$20
Morning and afternoon tea incl.

Prize fund minimum \$1225
OPEN TO ALL
WHO ENJOY CHESS

1st closing date - 24th June
2nd closing date - 3rd July
Entry forms available from chess clubs or phone:

Chris Bell (04) 283 172
Ivan Luketina (04) 284 066

ENTER NOW!

CHESS BY CORRY

The World Correspondence Chess Federation (WCCF) has not been in existence long but it is attracting an ever increasing number of members, judging by the crosstables of tourneys printed in Chess International.

The largest section is the World Wide Opens for lower grade players and the magazine lists 78, 7-player sections. The next step is the Master sections, nine players each, of which 21 are listed. Then on to International Master sections - 11 players - with four sections current and, at the peak, are the World Candidates sections of 15 players which have three in cycle one, three in cycle two and two in cycle three.

The WCCF is probably the quickest way to a world title and already boasts a new IM, Sweden's Lars Ekenlov, who is 55. Here is one of his games under ICCF rules!

Landowski v Ekenlov

Notes by Bob Karch, Editor, Chess International.

1 e4 e5 2 Nf3 Nc6 3 Bb5 a6 4 Ba4 Nf6 5 0-0 Nxe4 6 d4 b5 7 Bb3 d5 8 dxe5 Be6 9 c3 Be7 10 Nbd2 0-0 11 Bc2 Nxd2 12 Qxd2 Qd7 13 Re1 f5 14 exf6 ep Rxf6 Barely out of the opening and already Black controls the half-open file and is able to develop every one of his pieces. But look at White's: His rook and bishop are still at home. Lars has won the opening skirmish but that does not mean the game itself is won. 15 Ng5 Bf5 16 Qe2 h6 17 Bxf5 Qxf5 18 Nf3 Rxf8 19 Be3 Rg6 20 Kh1 White must get his king off the N-file or play the weakening 20 g3. 20...Qg4 21 Qf1? Rxf3 22 h3 Rxf3+ 1-0 After 23 gxh3 Qf3+ 24 Kh2 Bd6#

CLUB DIRECTORY cont

WELLINGTON CC meets Saturdays from 6pm at Museum Room, Turnbull House, Bowen Street. Contacts: Tim Frost, president, 1/51 Cornford St, Karori 763-541 or E G A Frost, secretary, 17 Croydon Street, Karori 764-098.

NELSON CC meets Thursdays 7.30pm at 2 Shakespeare Walk. Contact, Dan Dolejs, 89-827 or Denis Boyce, Motueka 87-985. Visitors welcome.

CANTERBURY CC meets Wednesdays 7.00pm at the clubrooms, 227 Bealey Avenue, Christchurch. Phone 663-935 (clubrooms). Contact, Michael Rocks, 42 Brockworth Place, Riccarton, phone 480-154

ASHBURTON CC meets Mondays 7.30pm (Feb-Oct inclusive), Room R5, Ashburton College, Walnut Avenue. Contact, Roy Keeling 86-936 or Stephen Taylor 85-761. Postal address: PO Box 204, Ashburton.

OTAGO CC meets Wednesdays and Saturdays 7.30pm at 7 Maitland Street, Dunedin. Phone 776-919 (clubrooms). Contact, Arthur Patton, 26 College Street, Dunedin, phone 877-414.

INVERCARGILL CC meets Tuesdays 7.30pm at Staff Room, South School, Ness Street. Contact, Robert Mackway Jones, phone 64-747 or Allan McCall, phone 82-204

NEW ZEALAND CORRESPONDENCE CHESS ASSOCIATION, PO Box 3278, Wellington. Local and overseas play. Contact, J W (Sandy) Maxwell, phone 367-682

CLUB DIRECTORY

Details of the advertising rates for this page can be found on the inside front cover.

AUCKLAND CHESS ASSOCIATION, contacts: President, Ewen Green, phone 412-9701; Secretary, Nigel Hopewell, 78 Old Mill Road, Grey Lynn, Auckland 2.

AUCKLAND CHESS CENTRE meets Mondays 7.15pm (tournament and casual play) at 17 Cromwell Street, Mt Eden, Auckland. Phone 602-042 (clubrooms). Contact: Martin Dreyer, 22a Manawa Road, Remuera, Auckland. Phone 5222-781.

DEVONPORT CC meets Tuesdays 7.30pm at the Methodist Church Hall, Owens Road, Devonport. All welcome. President, Philip Hair, phone 458-673; Secretary, David Shead, phone 456-175. Postal address: 18 Grove Road, Devonport.

HOWICK-PAKURANGA CC meets Tuesdays 7.30pm at Howick Bridge Club, Howick Community Complex. Contact, Derrick Lark, 39 Minaret Drive, Bucklands Beach. Phone 534-1114

NORTH SHORE CC meets Wednesdays 7.30pm (tournament and casual play) in the Northcote Community Centre, cnr College Road/Ernie Mays Street, Northcote. Postal address: PO Box 33-587, Takapuna. Contact, Peter Stuart, phone 456-377. Visitors welcome.

PAPATOETOE CC meets Wednesdays 7-11pm at St George's Anglican Church Hall, Landscape Road, Papatoetoe. Contact, secretary/treasurer BHP Marsick 3/62 Kolmar Road, Papatoetoe 278-2309 (anytime) or club captain G Banks, 279-8170 evenings.

WAIEMATA CC meets Thursdays 7.30pm at Kelson West Community Centre, cnr Great North and Awaroa Roads. Postal address: PO Box 69-005, Glendene, Auckland 8. Contacts, Ben Savage, phone 818-2301, Bob Smith, phone 818-4113.

HAMILTON CC meets Thursdays 7pm at Hamilton Bowling Club, Pembroke Street, Hamilton. Contact, Len Whitehouse, 165 Galloway Street, Hamilton, phone 69-582.

TE AWAMUTU CC meets Wednesdays 7.30pm at Federated Farmers Building, Carlton Street, Te Awamutu. Contact: President, Roman Novak (0871) 6165 (home) 4536 (bus); Secretary, Mark Gulliver 7825.

ROTORUA CC meets Thursdays 7.30pm in the Salvation Army Hall, Old Taupo Road, Rotorua. Secretary: Percy Margolin, 64 Turner Drive, Rotorua Phone Rotorua 83-415.

NEW PLYMOUTH CC meets Tuesdays 7.30pm at clubrooms, 11 Gilbert Street, New Plymouth. Contact, President, Errol Tuffery, phone 82-626 New Plymouth.

MOUNT MAUNGANUI CC meets Tuesdays 2pm and Thursdays 7pm at the Hillier Memorial Centre, Gloucester Road, Mt Maunganui. Contact, Barney Sullivan phone 56-793.

TAUPO CC meets Mondays 7.30pm at "Lakewood", 5a Fletcher Street, Taupo. Contact, Joanne Rae, phone 83-285

HASTINGS/HAVELOCK NORTH CC meets Wednesdays 7pm at the Library, Havelock North High School, Te Mata Road, Havelock North. Contact, Mike Earle, phone 776-027.

PALMERSTON NORTH CC meets Tuesdays 7.30pm at Palmerston North Intermediate School, Ferguson Street, Palmerston North. Contact, President, John Chapman, phone 80-337; Secretary, Mark Brimble, phone 84-947.

KAPITI CC meets Thursdays 7.30pm at Block E, Kapiti College, Margaret's Road, Raumati Beach. Contact, Glenys Mills (Sec), 179 Te Moana Road, Waikanae. (058) 34-991.

UPPER HUTT CC meets Mondays 7.45pm at Fraser Crescent School Hall, Redwood Street, Upper Hutt. Contact, Anton Reid, 16 Hildreth Street, Upper Hutt, phone 288-756.

HUTT VALLEY CC meets Tuesdays 8pm at Hutt Valley Intermediate School, south end, entrance off Kauri Street. Contact, Derek Wong Nam, phone 673-297.

HARBOUR CITY CC meets Wednesdays at the Central Bowling Club, end of Roxburgh Street, Petone. Contact, Peter Collins phone 646-764 or Gavin Mamer, phone 648-401. Postal address, 54 Kowhai Street, Wainuiomata.

CIVIC CC meets Tuesdays, 7.30pm at Turnbull House, Bowen Street, Wellington. Contact, Russell Dive, 14 Burnton Street, Lower Hutt, phone 666-090.