

## NEW ZEALAND CHESS SUPPLIES

PO BOX 42090 WAINUIOMATA

PHONE (04) 5648-578

FAX (04) 5648-578

STOCKISTS OF THE WIDEST SELECTION OF MODERN CHESS LITERATURE IN AUSTRALASIA. CHESS SETS, BOARDS, CLOCKS, STATIONERY AND ALL PLAYING EQUIPMENT. ELECTRONIC CHESS AND DATABASE - CHESS COMPUTERS A SPECIALITY. DISTRIBUTORS OF NOVAG and MEPHISTO WORLD CHAMPION MODELS.

SEND S.A.E FOR BROCHURE AND CATALOGUE (STATE YOUR INTEREST)

AUCKLAND  
STOCKISTS

**IM ORTVIN SARAPU** - 8 BARRINGTON ROAD, AUCKLAND 2.  
ALL PLAYING EQUIPMENT AND CHESS STATIONERY.  
SCHOOL SUPPLIES A SPECIALITY. PHONE (09) 763-083  
**PRIME TIME GAMES LTD**  
STRAND ARCADE, QUEEN ST, AUCKLAND  
NEW ZEALAND'S ONLY COMPLETE CHESS RETAIL STOCKIST  
PHONE (09) 358 0282

CHRISTCHURCH  
STOCKIST

**SCORPIO BOOKS LTD**  
CNR HEREFORD STREET, OXFORD TERRACE, CHRIST-  
CHURCH. BOOKS, SETS, CLOCKS ETC.  
PHONE (03) 792-882

DUNEDIN  
STOCKIST

**TONY DOWDEN** - FLAT 2, 808 GREAT KING STREET,  
DUNEDIN. ALL PLAYING EQUIPMENT AND CHESS STA-  
TIONERY. PHONE (03) 477-1533

NIC-BASE  
CONSULTANT

**BERNARD CARPINTER** 7 BROOMHILL RD, WELLINGTON 5  
SPECIALIST CHESS DATABASE ADVICE, INFORMATION AND  
DEMONSTRATION PHONE (04) 847-600

### Beautiful plastic Staunton pattern sets



kings. 3 1/4 inches (9.5cms.) high. Felted pieces. Packaged in cellophane bags

**\$15.00 in bags** - Boards to suit from \$5.00 - **\$19.00 in box**  
ALSO

WELL MADE WOODEN SETS, FELT BASED AND WEIGHTED  
IN ROSEWOOD AND EBONY, BOXED OR LOOSE FROM \$49

**'EVERYTHING FOR CHESS AT N.Z.C.S'**

# NEW ZEALAND CHESS



Registered at Post Office HQ, Wellington as a magazine

VOL 17 No 6

\$3.00  
DECEMBER 1991



### NEW ZEALAND CHAMPIONSHIP FIELD 1949-1950

Standing, l to r: R O SCOTT, H MCNABB, D I LYNCH, W E MOORE  
Seated, l to r: C P BELTON, J A MOIR, A L FLETCHER, R E BAEYERTZ,  
DR B M CWILONG, D C M MANSON, N T FLETCHER, DR P ALLERHAND

NEW ZEALAND CHESS is published bi-monthly (February, April, June, August, October and December) by the New Zealand Chess Federation Inc.

Unless otherwise stated, however, the views expressed herein are not necessarily those of the Federation.

#### ADDRESSES

All articles and letters should be addressed to the editor, 11 Arizona Grove, Kowhai Park, Wellington.

Correspondence to the federation should be addressed to the Secretary, NZCF, PO Box 3130, Wellington.

Subscriptions, changes of address and advertising inquiries should be addressed to the Secretary.

All prices include GST, where applicable.

#### SUBSCRIPTION RATES

Rates are for one year's subscription. Overseas rates are in US dollars.

#### Surface mail

New Zealand \$NZ18.00

Other countries \$US20.00

#### Airmail

Australia and South Pacific \$US20.00

Other countries \$US25.00

#### ADVERTISING RATES

Full page \$NZ45.00

Half page or full column \$NZ22.50

Half column \$NZ11.25

Club directory listing \$6.75 per annum

\$2.25 per alteration.

#### DEADLINE FOR COPY

All copy should be in the editor's hands by the second Saturday of the month preceding publication.

Printed by Northland Printing Company Ltd  
22-24 Garrett Street, Wellington  
for the New Zealand Chess Federation  
PO Box 3130 Wellington

Hardware: Atari computer and Epson printer.  
Software: Timeworks DTP.

## INSIDE STORY

There were two meetings of council during October. There seemed to be a lot of discussion but not a lot to report; not an unusual situation.

Had Vernon Small wished to play in the championship, the council had a problem with rule 114. However, before council had to make a decision, Small said that he would not be available for the tournament. If you want to see who made it, see local news columns.

Some recommendations from the tournament committee were approved. Included were (in our wording): that up to half the places in Olympiad teams be awarded to the top placegetters in the preceding championship; that Ortvin Sarapu's participation in the Australian championships (by invitation) be endorsed; that more official action be taken where breaches of etiquette or reasonable behaviour are reported; that the federation publish, early in the New Year, an information sheet to all affiliated players and, since few have offered, that council suggest venues for federation events.

Presumably, this suits Ashburton who have offered to host the schoolpupils' final but the NZ Junior and Under 16 in Auckland, North Island in Wanganui and South Island in Christchurch have still to be taken up by the respective areas. Ted Frost, as tournament convenor has also made suggestions for 1993 tournaments. His enthusiasm is a good thing, almost essential, in fact, if we are to get some order and organisation into our tournament schedule.

Cont p148.

## NEW ZEALAND CHESS

EDITOR: Bill Ramsay

OVERSEAS EDITOR: NM Peter Stuart

WOMEN'S EDITOR: Vivian Smith

SPECIAL CORRESPONDENT: Emil Melnichenko

### EDITORIAL

Archivists are sometimes frustrated in their searches because people do not like to hold on to "junk". The trouble is that that letter, photograph, diary or even recorded material such as music or verbal description, could be the missing piece in a reconstruction many years in the future.

The photograph on the front page is a case in point. A casual visit to a secondhand bookshop, owned by a friend, enabled one history buff to "save" this photo, and others. However, the real find was a personal congress scorebook; twelve games that could have been lost forever.

Some people may say that individual games or even individual championship tournaments were not of a high standard but, to our history buff, every game in every championship is part of our chess heritage.

The players at any particular national championship tourney are the best of those who are able and willing to stand up and be counted. For that they deserve to be recorded.

People die all the time; sometimes it is a chessplayer. Too often, the relatives or friends entrusted with disposing of unwanted possessions of the deceased do not know the value of some material since they did not share the interest. In the case of a chessplayer, the well-thumbed books, the fading photographs, scribbled notebooks and "those stupid wooden things" are junk. Unless the secondhand dealer pays a few dollars they go to the tip. And so some of a person's joys, disappointments, dreams and disasters go on the tip, too.

Nolan Fletcher was not one of the greats of New Zealand chess. He won the Major Open and, subsequently, played twice in the championship, finishing in the middle of the field both times. However, he has left us a photo of a championship field we didn't have and 25 games we might have lost (12 1947 championship, 12 1945 Major Open and Stenhouse-Purdy 1924, Nelson).

The photo and the championship games will go to enhance the small collection of chess memorabilia in the National Library.

# SOUTH ISLAND CHAMPIONSHIP

## By Michael Rocks

After a five-year absence, the South Island Championship returned to Nelson in late August. In its 42nd incarnation the tournament began with a five round quickplay (30/30) on the Sunday afternoon, followed by the traditional eight-round championship squeezed into five days. The venue for both events was the Drama Room at Nelson College for Girls.

Final results of the quickplay were: B Martin, D Dolejs, P Monrad 4; S Wastney 3.5; D Stracy, M Noble, K Boyd, P Sinton, M Delceg 3; P Tuffery, P Vecovsky, R Glover 2.5; R Bishop, I McIntosh 2; T Duffield, H Gold 1.5; E Frost, F Thompson, L Potroz, T Pyatt 1.

31 players took part in the championship, including 10 from across the Strait, though it was a little surprising that so few Wellington "cracks" bothered to turn up. Nevertheless, five players were rated over 2000 and there was a reasonably even spread of ratings.

The tourney was staged as part of the city of Nelson's 130th anniversary. However, the anniversaries did not stop there. 125 years ago the Nelson and Christchurch (now Canterbury) clubs were engaged in the first telegraphic chess match in New Zealand (and possibly the southern hemisphere).

Moving closer to the present day, the sponsor, Mr Eelco Boswijk, owner of the noted Nelson landmark the Chez Eelco Coffee House, was shortly to celebrate his 30th year in business. Eelco took great interest in the tournament, attending the opening and closing ceremonies and hosting an informal get-together in the coffee house on the Thursday evening.

Round one went according to ratings except on board 15 where Otago schoolpupil David Guthrie upset Don Stracy. *(Despite author's corrections, the score does not play out.)*

There is a lot to be said about two rounds per day in an Island championship, most of it bad. Richard Sutton was the biggest heffalump to be trapped in round two though he wasn't alone as Kendall Boyd, Brian Nijman and Don Stracy (again) all joined him.

### A Nijman v R Sutton

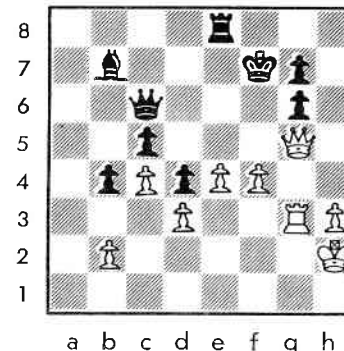
1 e4 e5 2 Nf3 Nc6 3 Bb5 a6 4 Ba4 Nf6 5 0-0 Be7 6 Re1 b5 7 Bb3 d6 8 h3 Na5 9 c3 Nxb3 10 axb3 Bb7 11 d3 0-0 12 Bg5 Re8 13 Bxf6 Bxf6 14 Na3 d5 15 Nc2 c5 16 c4 d4 17 Qd2 b4 18 Kh2 a5 19 Rg1 Qd7 20 g4 Bd8 21 Nce1 Ra6 22 Rg3 a4 23 bxa4 Rxa4 24 Qd1 Rxa1 25 Qxa1 Bc7 26 Qc1 Ra8 27 Nh4 Ra2 28 Nf5 Bd8 29 g5 Qa4 30 Nf3

Bc7 31 Nh6+ Kf8 32 g6 hxg6 33 Nxf7 Kxf7 34 Qg5 Qc6 35 Nxe5+ Bxe5 36 Qxe5 Ra8 37 f4 Re8 38 Qg5

See diagram

38...Rxe4 39 dxe4 Qxe4 40 Rg1 Qf3?? (...Qe7+ wins) 41 Qxg6+ 1-0.

Brian Nijman's loss was just as bizarre when he left his queen en prise to a most apologetic Denis Boyce. Boyd's behaviour in adjourning a dead lost position (K+P v K+R+3P) in the hope that his opponent would not turn up in the morning did little to enhance his reputation. Unfortunately, the only sanction available to the DOP was the rather pointless loss of the game.



With round three going according to "plan", four players - Ben Martin, Mark Noble, Hilton Bennett and Paul Tuffery reached 3/3.

One third of the fourth round games were adjourned so that Ben Martin's assumption of the sole lead did not become evident till a couple of days later.

### B Martin v P Tuffery

1 d4 Nf6 2 c4 g6 3 Nc3 d5 4 cxd5 Nxd5 5 e4 Nxc3 6 bxc3 Bg7 7 Nf3 c5 8 Rb1 0-0 9 Be2 Nc6 10 d5 Bxc3+ 11 Bd2 Bxd2+ 12 Qxd2 Nd4 13 Nxd4 cxd4 14 Qxd4 Qa5+ 15 Qd2 Qxd2+ 16 Kxd2 Rd8 17 Ke3 e6 18 dxex6 Bxe6 19 Rxb7 a5 20 a4 Rac8 21 Rd1 Rc3+ 22 Kf4 Rdc8 23 Rd2 R8c5 24 f3 g5+ 25 Kg3 g4 26 Kf4 gxf3 27 gxf3 Rh5 28 Rb5 Rxb5 29 Bxb5 Kg7 30 Rg2+ Kf6 31 Rg8 Rc8 32 e5+ Ke7 33 Rxc8 Bxc8 34 Bc6 Ke6 35 Ke4 f6 36 Bd5+ Ke7 37 f4 Bd7 38 Bb3 fxe5 39 Kxe5 Kf8 40 f5 Kg7 41 f6+ (sealed) Kf8 42 Kd6 Be8 43 Ke5 Bd7 44 Kf4 h6 45 Ke5 Bc6 46 Kd6 Be8 47 h4 h5 48 Bd1 Bg6 49 Ke5 Be8 50 Kf5 Bf7 51 Kg5 Be8 52 Bb3 Bc6 53 Kxh5 Be4 54 Kg5 Bd3 55 h5 Bb1 56 h6 Bd3 57 Be6 Bc2 58 Bf5 Bb3 59 h7 Kf7 60 h8Q 1-0.

Adjournment fever continued with another five games unfinished but Sutton's game was not one of them.

### R Sutton v H Bennett

1 d4 Nf6 2 c4 e5 3 dxex5 Ng4 4 Nf3 Bc5 5 e3 Nc6 6 Be2 0-0 7 0-0 Re8 8 Nc3 Ngxe5 9 b3 Nxf3+ 10 Bxf3 Ne5 11 Be2 a5 12 Bb2 Ra6 13 Qd5 Ba7 14 Ne4 Rae6 15 Qxa5 Qh4 16 Nd2 Bb6 17 Qc3 Rh6

## SOUTH ISLAND CHAMPIONSHIP 1991

18 h3 Rg6 19 Qc2 Qg5 20 Qe4 d5 21 h4 Qe7 22 cxd5 Bh3 23 g3 Bxf1 24 Nxf1 f6 25 Bh5 Qd7 26 Bxg6 Nxc6 27 Qc4 Kh8 28 Kg2 Qf5 29 f3 Bxe3 30 Re1 Nxf4+ 31 Qxf4 Qc2 32 Kh3 Qf2 33 Rxe3 Qxf1+ 34 Kg4 h5+ 35 Kxh5 Rxe3 36 Qxe3 g6+ 37 Kh6 Qa6 38 Qe8#

Philip Monrad committed the "blunder of the tournament" when, with 20 minutes on the clock and seven moves to time control, he uncorked a forced win of Boyd's queen and a draw offer. Not surprisingly, Boyd accepted.

Round six saw the clash of the country's top two players, Martin and Sutton. The notes are by Tony Love, (Otago Daily Times, 14th September).

### B Martin v R Sutton

1 d4 Nf6 2 c4 g6 3 Nc3 d5 4 cxd5 Nxd5 5 e4 Nxc3 6 bxc3 Bg7 7 Nf3 c5 8 Rb1 0-0 9 Be2 Nc6 10 d5 White sacrifices a pawn for attacking chances. 10...Bxc3+ 11 Bd2 Bxd2+ 12 Qxd2 Na5 13 h4 Bg4 14 h5 Bxf3 15 gxf3 e5 16 f4 Re8 Better was 16...exf4! 17 hxg6 White misses 17 Bb5 Re7 18 f5! which is very strong. 17...fxg6 18 Qc3 Again, 18 f5 looks a better try. 18...exf4 19 f3 b6 20 Bb5 Re7 21 Kf2 Qd6 22 Rbg1 Re5 23 Rg4 Rf8 24 Bd7! Nc4! Black decides to sacrifice the exchange. 25 Be6+ Rxe6 26 dxe6 Qxe6 After 26...Ne5! Black is winning. 27 Rxh7! Ne5 Obviously not 27...Kxh7 28 Rh4+ Kg8 29 Qh8+ Kf7 30 Rh7# 28 Rgh4 Qxa2+ 29 Kg1 Qb1+ 30 Kg2 Qa2+ 31 Kg1 Qb1+ 32 Kg2 =.

Martin and Noble won again in round seven while Sutton was held to a draw by Scott Wastney. However, most interest on the fourth day centred around the adjournment sessions (an extra one had to be scheduled to cope with the backlog) as 19 players battled to clear 14 adjournments.

Isabel McIntosh introduced a "novelty" (at least to this writer) in her game against Merv Morrison. Having had her draw offer turned down just before the adjournment, she wrote out her resignation on a paper napkin during lunch and headed for the airport. One assumes she was attempting to gain the bye in the final round, but her actions caused her to be disqualified.

*(A perusal of the scoretable indicated that McIntosh would have got the bye in the final round. She should have had a quick word - for the sake of politeness, if nothing else - with the DOP but we question if disqualification was appropriate.)*

After a little horse-trading and, for many, the reception at the Chez Elco Coffee House, the outstanding games were finally cleared.

|    | Club             | Rtng | Rd1  | Rd2 | Rd3 | Rd4 | Rd5 | Rd6 | Rd7 | Rd8 | Pts      |     |
|----|------------------|------|------|-----|-----|-----|-----|-----|-----|-----|----------|-----|
| 1  | B Martin         | OT   | 2328 | W18 | W19 | W9  | W3  | D2  | D4  | W5  | W6       | 7   |
| 2  | M Noble          | HC   | 2126 | W16 | W12 | W6  | D21 | D1  | W10 | W7  | L4       | 6   |
| 3  | P Tuffery        | NP   | 1912 | W14 | W26 | W5  | L1  | D6  | D7  | W9  | W10      | 6   |
| 4  | R Sutton         | OT   | 2300 | W15 | L10 | W14 | W16 | W21 | D1  | D6  | W2       | 6   |
| 5  | P Monrad         | HC   | 1873 | W28 | W30 | L3  | W9  | D7  | W15 | L1  | W17      | 5.5 |
| 6  | S Wastney        | CA   | 1734 | W22 | W7  | L2  | W17 | D3  | W21 | D4  | L1       | 5   |
| 7  | K Boyd           | OT   | 2079 | W23 | L6  | W11 | W15 | D5  | D3  | L2  | W18      | 5   |
| 8  | D Stracy         | HC   | 1689 | L26 | L14 | W20 | D11 | D27 | W29 | W28 | W16      | 5   |
| 9  | D Boyce          | NE   | 1733 | W13 | W17 | L1  | L5  | W23 | W22 | L3  | D11      | 4.5 |
| 10 | A Nijman         | CA   | 1780 | W24 | W4  | L21 | D25 | W18 | L2  | W19 | L3       | 4.5 |
| 11 | R Edwards        | OT   | 1564 | L21 | W13 | L7  | D8  | W12 | D25 | W15 | D9       | 4.5 |
| 12 | K Okey           | NP   | 1747 | W20 | L2  | L15 | W27 | L11 | W14 | D22 | W21      | 4.5 |
| 13 | H Gold           | OT   | 1372 | L9  | L11 | Bye | W26 | D31 | L20 | W29 | W27      | 4.5 |
| 14 | R Glover         | HC   | 1535 | L3  | W8  | L4  | W19 | L22 | L12 | W20 | W25      | 4   |
| 15 | R Bishop         | CC   | 1683 | L4  | W27 | W12 | L9  | W23 | L5  | L11 | W22      | 4   |
| 16 | D Dolejs         | NE   | 1674 | L2  | W24 | W19 | L4  | L15 | W28 | W25 | L8       | 4   |
| 17 | B Nijman         | CA   | 2032 | W31 | L9  | W23 | L6  | D25 | D18 | W21 | L5       | 4   |
| 18 | E Frost          | WE   | 1684 | L1  | W28 | D25 | W31 | L10 | D17 | W27 | L7       | 4   |
| 19 | P Sinton         | OT   | 1828 | W27 | L1  | L16 | L14 | W26 | W31 | L10 | W24      | 4   |
| 20 | G Guerin         | CA   | 1437 | L12 | L23 | L8  | Bye | W30 | W13 | L14 | W28      | 4   |
| 21 | H Bennett        | HA   | 1959 | W11 | W25 | W10 | D2  | L4  | L6  | L17 | L12      | 3.5 |
| 22 | T van Bodegraven | MA   | 1420 | L6  | D31 | W26 | D23 | W14 | L9  | D12 | L15      | 3.5 |
| 23 | B Gloistein      | CA   | 1610 | L7  | W20 | L17 | D22 | L9  | L27 | Bye | W26      | 3.5 |
| 24 | M Morrison       | NS   | 1456 | L10 | L16 | D28 | L29 | Bye | W30 | W31 | L19      | 3.5 |
| 25 | P Vecovsky       | OT   | 1696 | W29 | L21 | D18 | D10 | D17 | D11 | L16 | L14      | 3   |
| 26 | D Guthrie        | OT   | 1297 | W8  | L3  | L22 | L13 | L19 | Bye | W30 | L23      | 3   |
| 27 | T Duffield       | OT   | 1491 | L19 | L15 | W30 | L12 | D8  | W23 | L18 | L13      | 2.5 |
| 28 | E Allen          | CC   | 1506 | L5  | L18 | D24 | W30 | W29 | L16 | L8  | L20      | 2.5 |
| 29 | F Thompson       | NE   | 1370 | L25 | Bye | L31 | W24 | L28 | L8  | L13 | D30      | 2.5 |
| 30 | L Potroz         | NE   | Unr  | Bye | L5  | L27 | L28 | L20 | L24 | L26 | D29      | 1.5 |
| 31 | I McIntosh       | OT   | 1603 | L17 | D22 | W29 | L18 | D13 | L19 | L24 | Withdrew |     |

Club Code: CA - Canterbury; CC - NZCCA; HA - Hamilton; HC - Harbour City, MA - Masterton; NE - Nelson; NS - North Shore; OT - Otago; WE - Wellington.

**FOR SALE FOR SALE FOR SALE**  
**WORLD CHAMPION PROGRAM**  
**MEPHISTO LYON 16-bit Chess computer**  
**in upgradable modular board**

**ELO 2300 (German rating) Price \$2950 includes adaptor**

**ONE ONLY board in stock as result of cancelled order**  
**Usual price \$3750**

Contact

**BRIAN FOSTER** at

**New Zealand Chess Supplies Ltd**

**PO Box 42090, Wainuiomata**

**Phone or fax (04) 564-8578**

Brochure and performance data available on request

Last to finish, of course, was Bennet-Noble from round four. After three time scrambles and over eight hours of play, they agreed a draw.

The pairings among the leaders for the final round were: Martin (6) v Wastney (5); Noble (6) v Sutton (5); Paul Tuffery (5) v Arie Nijman (4.5). Just one upset result could have resulted in a five-way tie for first.

A Nijman overlooked a mate in one to ensure Tuffery a share of at least third place. Sutton also reached six points when Noble went for the win, trying to gain automatic entry to the New Zealand Championship, and lost in the attempt. On board one, Martin appeared to be sinking into time trouble and the unlikely looked as though it might happen. However, as Tony Dowden put it, "Ben just moved up a gear" and Wastney's position soon cracked.

#### **B Martin v S Wastney**

**1 e4 c6 2 d4 d5 3 Nc3 dxe4 4 Nxe4 Nd7 5 Bc4 Ngf6 6 Ng5 e6 7 Qe2 Nb6 8 Bd3 h6 9 N5f3 c5 10 dxc5 Nbd7 11 Be3 Nd5 12 Bd2 Qf6 13 Nh3 Bxc5 14 0-0 Bd6 15 c4 Nb4 16 Bc3 e5 17 c5 Bxc5 18 Nxe5 Nxe5 19 Bxe5 Qe7 20 Bb5+ Kf8 21 Nf4 Bf5 22 Rae1 a6 23 Qh5 Qg5 24 Bc4 Qxh5 25 Nxh5 f6 26 Nxf6 b5 27 Nh5 Ra7 28 Bb3 Bd3 29 Rc1 Bc4 30 Bxc4 bxc4 31 Rxc4 Nd3 32 Bd4 1-0.**

Thus, **Ben Martin** retained the title he won in Dunedin last year. In the last two championships Ben has conceded just three draws and is without a doubt the South's strongest "active" player. Mark Noble's recent results are probably sufficient to get him into the NZ championship field on rating while Paul Tuffery had a good tournament. His only loss was to Martin but the vagaries of the swiss system meant he didn't meet either Noble or Sutton.

Richard Sutton's mishap in round two meant that he was always facing an uphill struggle to win the event. The draw certainly had it in for Scott Wastney, a former Nelsonian now studying in Christchurch. In rounds two through eight he faced the top seven rated players, copping five blacks and scoring 4/7. His final result saw him miss out on the overall prizelist and the grading prizes. NZ Chess Supplies, through agent Tony Dowden, came to the rescue with the presentation of a special book prize.

At the other end, Leith Potroz, a 14-year-old from Nayland College, had a tough introduction to tournament chess. Given a little more experience he should convert more of his promising positions into points.

The tournament was well organised by the Nelson Chess Club. Apart from the occasional silliness mentioned previously, there were no disputes. My thanks to Mr and Mrs Fred Thompson for their hospitality over the week.

## Women's Chess

**By Vivian Smith**

This is my last article as Women's Editor of New Zealand Chess. Fulltime work and parenting three active children has meant the time and energy I can put into chess is now very limited. Also, I feel I have done the job long enough and it's time for new blood.

Hopefully, there is someone out there.

I have been disappointed at the amount of support received during my period as women's editor; one unannotated game in four years, I think. I wish my successor better luck.

However, for my last article, I have something sensational.

After 64 years the Soviet stranglehold on the Women's World Championship has been broken.

In late October in the Philippines 20-year-old **Xie Jun**, of China, beat Maya Chiburdanidze 8.5-6.5 to take the title.

Maya had been champion for 13 years, surviving four previous challenges.

The new champion, Xie, comes from Beijing and is variously described in reports as a housewife and a physical education student.

Xie won the third game but suffered back to back losses in games four and five. She fought back and finally took the lead again in game 11, increasing her advantage to two points in game 16.

Chiburdanidze had to win the last two games to retain her title but they were both drawn.

As you can see, Xie's play is worthy of a world champion. She showed great tactical awareness and stamina during the match - she had the ability to play on and concentrate for as long as necessary to clinch the point.

The new champion learned to play chess at the age of 10 at a Beijing school. She has obviously made great strides since then, as have many Chinese women in the past 10 years.

Chess pundits say the rise of the Chinese women, who finished third at last year's Olympiad in Yugoslavia, can be attributed to hard training with their men players.

Xie was the third Chinese player to qualify for the Candidates matches since 1983, so a Chinese revolution at the top of women's chess was seemingly inevitable.

Game 8

M Chiburdanidze v J Xie

1 e4 e5 2 Nf3 Nc6 3 Bb5 a6 4 Ba4 Nf6 5 0-0 Be7 6 Re1 b5 7 Bb3 0-0 8 d3 d6 9 c3 Na5 10 Bc2 c5 11 Nbd2 Re8 12 Nf1 Nc6 13 h3 Bb7 14 Ng3 Bf8 15 Nf5 Ne7 16 Nxe7 Bxe7 17 a4 Bf8 18 Bg5 h6 19 Bh4 Be7 20 d4 Qc7 21 dxe5 dxe5 22 Qe2 c4 23 Red1 Qc5 24 Nh2 b4 25 cxb4 Qxb4 26 Nf3 Nh5 27 Bxe7 Qxe7 28 g3 Qe6 29 Kh2 Nf6 30 Ra3 a5 31 Re3 Bc8 32 Qf1 Rb8 33 Rb1 Ba6 34 Qe1 Rb4 35 b3 Reb8 36 bxc4 Nd7 37 Reb3 Qxc4 38 Rxb4 axb4 39 Bb3 Qd3 40 Qd1 Qxd1 41 Rxd1 Nc5 42 Rb1 Bd3 43 Rb2 Bxe4 44 Nxe5 Nxb3 45 Rxb3 Bd5 46 Rb2 b3 47 Nd3 f6 48 g4 Bc4 49 Nc5 Rc8 50 Ne4 Bd5 51 Ng3 Ra8 52 Ne2 Rxa4 53 Nc3 Ra2 54 Rb1 Rxf2+ 55 Kg1 Rg2+ 56 Kf1 Rh2 57 Resigns.

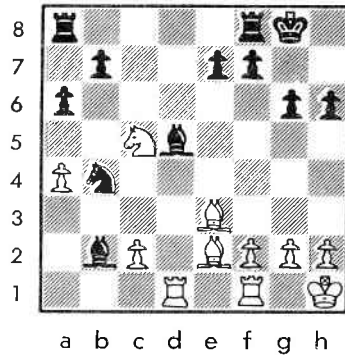
Game 11

J Xie v M Chiburdanidze

1 e4 c5 2 Nf3 d6 3 d4 cxd4 4 Nxd4 Nf6 5 Nc3 Nc6 6 Be2 g6 7 Nb3 Bg7 8 0-0 0-0 9 Bg5 a6 10 a4 Be6 11 Kh1 h6 12 Be3 d5 13 exd5 Nxd5 14 Nxd5 Qxd5 15 Nc5 Bxb2 16 Qxd5 Bxd5 17 Rad1 Nb4

See diagram

18 Nd7 Bc6 19 Nxf8 Rxf8 20 Bc5 a5 21 Bxe7 Re8 22 Rd8 Rxd8 23 Bxd8 Bxa4 24 Bxa5 Nc6 25 Rb1 Bd4 26 Bc7 Bxc2 27 Rxb7 Be4 28 Bc4 g5 29 f4 Kg7 30 Bd6 Nd8 31 Rd7 Bb6 32 Be5+ Kf8 33 fxg5 hxg5 34 Bf6 Black lost on time.



Game 13

J Xie v M Chiburdanidze

1 e4 e5 2 Nf3 Nc6 3 Bb5 a6 4 Ba4 Nf6 5 0-0 Be7 6 Re1 b5 7 Bb3 d6 8 c3 0-0 9 h3 Nd7 10 d4 Bf6 11 a4 Bb7 12 axb5 axb5 13 Rxa8 Qxa8 14 d5 Ne7 15 Na3 c6 16 dxc6 Bxc6 17 Qxd6 Nc8 18 Qd1 Nc5 19 Bd5 Nxe4 20 Bxc6 Qxc6 21 Qd3 Ncd6 22 Nxb5 Qc5 23 Qe2 Ng3 24 Qe3 Qxb5 25 fxg3 e4 26 Nd4 Qb7 27 Nc2 Re8 28 Qc5 Be5 29 g4 Qe7 30 Be3 h5 31 gxh5 Qh4 32 Bd4 Bxd4+ 33 Qxd4 Re6 34 Qd1 Nc4 35 b3 Ne5 36 Qe2 Rf6 37 Rf1 Rxf1+ 38 Kxf1 Nd3 39 Nd4 Qf4+ 40 Kg1 Qc1+ 41 Kh2 Nc5 42 Qc2 Qf4+ 43 g3 Qg5 44 b4 Nd3 45 Qe2 f5 46 h4 Qf6 47 Qa2+ Kh7 48 Qe6 Qxe6 49 Nxe6 e3 50 Nd4 f4 51 b5 Resigns.

# OVERSEAS NEWS

By Peter Stuart NM

REYKJAVIK

The first of the five 1991-93 World Cup tournaments was played at Reykjavik in September/October. Sponsored by SWIFT, the event had a prize fund well in excess of \$200,000.

After the dreadful Linares result early in the year and a somewhat shaky match win over Anand a month before Reykjavik Anatoly Karpov enjoyed a steadier performance, marred only by the loss to Ljubojevic. Even so Vassily Ivanchuk tied for first place and actually enjoys a slight lead over Karpov in the grand prix standings as the results of local player Hjartarson, playing hors de concours, do not count.

Karpov led throughout and maintained a half-point advantage even after his round 8 loss. Only in the 11th round did Ivanchuk catch up and both players exactly matched results from there on.

Murray Chandler, in his first taste of World Cup play started well but then faded badly. He looked like finishing with four straight losses when Karpov gained a huge advantage in their last round clash but the former world champion was forced to yield the vital half point after 119 moves.

The second tournament in the series is next July in Brussels. The field

is Kasparov, Timman, Salov, M.Gurevich, Short, Ehlvest, Korchnoi, Belyavsky, Nikolic, Ribli, Agdestein, Nunn, Gulko, Georgiev, Azmaiparashvili and de Firmian.

GULKO - KARPOV, English:

1 c4 Nf6 2 Nc3 e5 3 Nf3 Nc6 4 e4 Bb4 5 d3 d6 6 g3 Bc5 7 Bg2 Nd4 8 Nxd4 Bxd4 9 h3 Be6 10 f4 a6 11 Qf3 h6 12 Ne2 Bc5 13 Bd2 Qe7 14 Bc3 Bd7 15 b4 Ba7 16 a4 Nh7 17 Kd2 0-0 18 g4 b5 19 axb5 axb5 20 cxb5 Bb6 21 Rhd1 Bxb5 22 Ke1 Rfe8 23 Rxa8 Rxa8 24 Ra1 Rd8 25 Kd2 c6 26 Kc2 Nf0 27 Ng3 Ne6 28 Nf5 Qc7 29 fxe5 dxe5 30 Bf1 c5 31 bxc5 Qxc5 32 Kb2 Nf4 33 d4 exd4 34 Nxd4 Bxf1 35 Rxf1 Bc7 36 e5 Rxd4, 0 - 1.

IVANCHUK - SALOV, Sicilian Rauzer:

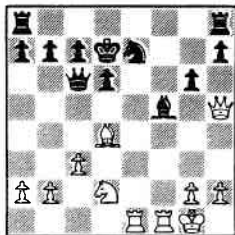
1 e4 c5 2 Nf3 Nc6 3 d4 cxd4 4 Nxd4 Nf6 5 Nc3 d6 6 Bg5 Bd7 7 Qd2 Rc8 8 f4 h6 9 Bxf6 gxf6 10 Nf5 Qa5 11 Bd3 Nb4 12 0-0 Nxd3 13 Qxd3 Qc5+ 14 Kh1 e6 15 Ne3 h5 16 Rad1 Be7 17 f5 Kd8 18 Rf3 b5 19 Ne2 Qe5 20 Nd4 a6 21 Rg3 Bf8 22 c3 Rc7 23 Rf1 Bc8 24 Nf3 Qc5 25 Nh4 Be7 26 fxe6 fxe6 27 Rg7 Bb7 28 Ng6 Re8 29 Nc2 Kc8 30 Nd4 Bd8 31 Nf4 Qe5 32 Rxc7+ Kxc7 33 Qh3 Kb8 34 Qxh5 Rg8 35 Qf7 Rh8 36 Qxe6 Bxe4 37 h3 f5 38 Qd7 Qc5 39 Nde6 Qc4 40 Qxd6+ Ka8 41 Rf2 Bh4 42 Qxa6+ Kb8 43 Qb6+ Kc8 44 Rd2 Be7 45 Ng6 Qf1+ 46 Kh2 Rxh3+ 47 Kxh3 Bxg2+

|               | 1   | 2 | 3    | 4   | 5   | 6   | 7   | 8   | 9   | 0   | 1   | 2   | 3   | 4   | 5   | 6   |      |
|---------------|-----|---|------|-----|-----|-----|-----|-----|-----|-----|-----|-----|-----|-----|-----|-----|------|
| 1 Karpov      | USR | g | 2730 | x ½ | 0 ½ | 1 ½ | 1 1 | 1 1 | 1 ½ | 1 ½ | 1 ½ | 1 ½ | 1 ½ | 1 ½ | 1 ½ | 1 ½ | 10 ½ |
| 2 Ivanchuk    | USR | g | 2735 | ½ x | ½ ½ | 1 ½ | ½ ½ | ½ 1 | ½ 1 | ½ 1 | ½ ½ | ½ 1 | ½ 1 | ½ 1 | ½ 1 | ½ 1 | 10 ½ |
| 3 Ljubojevic  | YUG | g | 2600 | 1 ½ | x ½ | 0 1 | ½ ½ | ½ ½ | ½ ½ | 1 ½ | 1 ½ | 1 ½ | 1 ½ | 1 ½ | 1 ½ | 1 ½ | 9    |
| 4 Nikolic P.  | YUG | g | 2625 | ½ ½ | ½ x | ½ ½ | 1 ½ | 1 ½ | 1 ½ | 1 ½ | 1 ½ | 1 ½ | 1 ½ | 1 ½ | 1 ½ | 1 ½ | 9    |
| 5 Halifman    | GER | g | 2630 | 0 0 | 1 ½ | x 1 | ½ ½ | 1 ½ | 1 ½ | 1 ½ | 1 ½ | 1 ½ | 1 ½ | 1 ½ | 1 ½ | 1 ½ | 9    |
| 6 Seirawan    | USA | g | 2615 | ½ ½ | 0 ½ | 0 x | ½ ½ | 1 1 | 1 ½ | 1 ½ | 1 ½ | 1 ½ | 1 ½ | 1 ½ | 1 ½ | 1 ½ | 8    |
| 7 Speelman    | ENG | g | 2630 | 0 ½ | ½ ½ | ½ ½ | x 1 | ½ ½ | ½ ½ | 0 1 | ½ ½ | ½ ½ | ½ ½ | ½ ½ | ½ ½ | ½ ½ | 7 ½  |
| 8 Ehlvest     | EST | g | 2605 | 0 ½ | ½ 0 | 0 0 | x ½ | 1 1 | 1 1 | 1 ½ | 1 ½ | 1 ½ | 1 ½ | 1 ½ | 1 ½ | 1 ½ | 7 ½  |
| 9 Salov       | USR | g | 2665 | 0 0 | ½ ½ | ½ ½ | 0 ½ | ½ x | 1 ½ | 1 0 | 1 0 | 1 0 | 1 0 | 1 0 | 1 0 | 1 0 | 7    |
| 10 Belyavsky  | USR | g | 2655 | ½ ½ | ½ ½ | ½ ½ | 0 0 | ½ 0 | x ½ | ½ 1 | ½ 1 | ½ 1 | ½ 1 | ½ 1 | ½ 1 | ½ 1 | 7    |
| 11 Portisch   | HUN | g | 2570 | ½ 0 | 0 ½ | ½ ½ | ½ ½ | 0 ½ | ½ x | ½ ½ | x ½ | ½ ½ | ½ ½ | ½ ½ | ½ ½ | ½ ½ | 7    |
| 12 Hjartarson | ICE | g | 2550 | 0 ½ | ½ ½ | ½ ½ | ½ ½ | 1 0 | 0 ½ | ½ x | ½ ½ | ½ ½ | ½ ½ | ½ ½ | ½ ½ | ½ ½ | 6 ½  |
| 13 Timman     | NLD | g | 2630 | ½ ½ | 0 ½ | 0 0 | 0 ½ | 0 ½ | 1 0 | ½ ½ | x ½ | ½ ½ | ½ ½ | ½ ½ | ½ ½ | ½ ½ | 5 ½  |
| 14 Andersson  | SWE | g | 2625 | 0 0 | ½ ½ | ½ ½ | ½ ½ | ½ ½ | 0 ½ | ½ ½ | ½ ½ | x 0 | ½ ½ | ½ ½ | ½ ½ | ½ ½ | 5 ½  |
| 15 Chandler   | ENG | g | 2605 | ½ 0 | ½ 0 | ½ ½ | ½ ½ | 0 0 | 0 0 | 0 ½ | ½ 1 | x 1 | ½ 1 | ½ 1 | ½ 1 | ½ 1 | 5 ½  |
| 16 Gulko      | USA | g | 2565 | 0 0 | ½ 0 | ½ ½ | ½ ½ | ½ ½ | 1 0 | 0 ½ | ½ ½ | ½ ½ | ½ 0 | ½ 0 | ½ 0 | ½ 0 | 5    |

48 Rxc2 Qf3+ 49 Kh2 Qh5+ 50 Kg3  
Bh4+ 51 Kf4, 1 - 0.

IVANCHUK - GULKO, Scotch:

1 e4 e5 2 Nf3 Nc6 3 d4 exd4 4 Nxd4  
Bc5 5 Be3 Qf6 6 c3 Nge7 7 Bc4 Qg6  
8 Nxc6 Qxc6 9 Bxf7+ Kxf7 10 Qh5+  
Ng6 11 Qf5+ Ke8 12 Qxc5 Qxe4 13  
Nd2 Qc6 14 Qh5 d6 15 0-0 Be6 16  
Bd4 Kd7 17 f4 Ne7 18 f5 Bxf5 19  
Rael g6



20 Rxe7+ Kxe7 21 Qg5+ Kd7 22 Bxh8  
Qb6+ 23 Bd4 Qxb2 24 g4 Be6 25 Rb1  
Qxa2 26 Qb5+ Ke7 27 Qxb7 Rd8 28  
Rf1 Qxd2 29 Qxc7+ Bd7 30 Bf6+ Ke6  
31 Qc4+, 1 - 0.

LJUBOJEVIC - TIMMAN, Queen's Gambit:

1 d4 Nf6 2 Nf3 e6 3 c4 d5 4 Nc3  
dxc4 5 e4 Bb4 6 Bg5 c5 7 Bxc4  
cxd4 8 Nxd4 Bxc3+ 9 bxc3 Qa5 10  
Bb5+ Nbd7 11 Bxf6 Qxc3+ 12 Ke2  
gxf6 13 Rcl Qb4 14 Rc4 Qe7 15  
Qc1 0-0 16 Rc7 a6 17 Ba4 Qd6 18  
Rd1 Ne5 19 Nf5 Qb4 20 Rd4 Qb6 21  
Ne7+ Kg7 22 Qc3 Ng6 23 Nxc6 hxg6  
24 e5 fxe5 25 Rd3 Kg8 26 Qxe5 Qb4  
27 Rh3 f6 28 Qe3 Qb2+ 29 Kf3 g5  
30 Rhh7 Rd8 31 Rcg7+ Kf8 32 Qc5+  
1 - 0.

GULKO - NIKOLIC, Réti:

1 Nf3 d5 2 c4 d4 3 b4 g6 4 Bb2  
Bg7 5 d3 e5 6 Nbd2 a5 7 a3 Ne7 8  
g3 b6 9 Bg2 Bb7 10 0-0 0-0 11 Re1  
c5 12 Qb3 Qc7 13 e3 axb4 14 axb4  
Rxa1 15 Rxa1 dxe3 16 fxe3 cxb4 17  
Qxb4 Nf5 18 Re1 Na6 19 Qc3 Nc5 20  
Qc2 Rd8 21 Bf1 e4 22 dxe4 Nxc3 23  
Bxc7 Nxf1 24 Ba1 Nxc2 25 Nxc2 Qg3+  
26 Kf1 Qxh2 27 Qc3 f6, 0 - 1.

BELYAVSKY - TIMMAN, Pirc:

1 d4 d6 2 e4 Nf6 3 Nc3 g6 4 Nf3  
Bg7 5 Be2 0-0 6 0-0 c6 7 Bg5 Qc7  
8 a4 Nbd7 9 Qd2 e5 10 Rfel a5 11  
Rad1 Re8 12 d5 Bf8 13 Bc4 Be7 14  
h3 Qb6 15 b3 Qb4 16 Qc1 Bf8 17  
Bd2 Qb6 18 Bh6 Qc7 19 Bxf8 Rxf8 20

Qh6 cxd5 21 Nxd5 Nxd5 22 Rxd5 Nf6  
23 Ng5 Be6 24 Re3 Qe7 25 Rf3 Rfd8  
26 Rb5 Rab8 27 Qh4 Bxc4 28 Nxc7 Nd5  
29 Qh6 Bxb5 30 exd5 f5 31 Qxc6+ Qg7  
32 Nf6+ Kf8 33 Nh7+ Kg8 34 Nf6+ Kf8  
35 Qxf5 Be8 36 Nh5+ Qf7 37 Qg5 Rbc8  
38 Qg7+ Ke7 39 Qg5+ Kd7 40 Rxf7+  
Bxf7 41 Nf6+, 1 - 0.

PORTISCH - GULKO, Queen's Indian:

1 d4 Nf6 2 c4 e6 3 Nf3 b6 4 a3 Ba6  
5 Qc2 Bb7 6 Nc3 c5 7 dxc5 bxc5 8  
Bf4 d6 9 Rd1 Qb6 10 e3 Be7 11 Be2  
0-0 12 0-0 Nbd7 13 Rd2 Rfd8 14  
Rfd1 Nf8 15 Ng5 Ng6 16 Bg3 d5 17  
cxd5 exd5 18 Bf3 Bc6 19 h4 Qb7 20  
Qf5 h6 21 Nxf7 Kxf7 22 Nxd5 Nf8 23  
Nxf6 g6 24 Qf4 Ne6 25 Bxc6 Qxc6 26  
Qe4, 1 - 0.

GULKO - SALOV, Grünfeld:

1 Nf3 d5 2 c4 c6 3 e3 Nf6 4 Nc3 g6  
5 d4 Bg7 6 Be2 0-0 7 0-0 b6 8 cxd5  
cxd5 9 Ne5 Bb7 10 Bd2 Nfd7 11 f4  
f6 12 Nf3 Rf7 13 Bd3 Nf8 14 f5  
gxf5 15 Bxf5 e6 16 Bd3 Nc6 17 Ne2  
Qd6 18 Ng3 Ng6 19 Nh5 Bh8 20 Qe2  
Raf8 21 a3 e5 22 dxe5 fxe5 23 Ng5  
Rxf1+ 24 Rxf1 Bc8 25 Rxf8+ Qxf8 26  
Be4 Nce7 27 Bb4 Bb7 28 Qg4 Qc8 29  
Qf3 Qf8 30 Qh3 Qc8 31 Nf6+ Kg7 32  
Qxh7+ Kxf6 33 Bxe7+ Nxe7 34 Qh6+  
Ng6 35 Qxc6+ Ke7 36 Qh7+ Kd6 37  
Nf7+ Kc7 38 Bf5, 1 - 0.

☆ ☆ ☆

### POLANITSA ZDROJ

The young French GM Joel Lautier won the 28th Rubinstein Memorial in September. Local player Robert Kuczynski gained his first GM norm in the category 11 event.

Scores: 1 Lautier 7½; 2-3 Kuczynski & GM Romanishin (USR) 7; 4 GM Adorian (HUN) 6; 5-6 GM Dolmatov (USR) & GM Smejkal (CZE) 5½; 7-10 GM Lau (GER), WGM Z. Polgar (HUN), IM Schmittdiel (GER) & GM Wojtkiewicz (POL) 5; 11 IM Mainka (GER) 4; 12 IM Gdanski (POL) 3½.

☆ ☆ ☆

### SAN BERNARDINO

The 12th Brocco Open was won by Soviet GM Alexander Chernin with 7

## NZCF Active Player Rating List for 1/11/91 (552 players)

The tournaments rated this period were the North and South Island Champs, NZ Schoolpupils, Wellington and Invercargill Queen's Birthday, North Shore, Papatoetoe and Waitakere Trust Opens, All-Wellington, Wellington Interclub, Labour Weekenders of Auckland, Upper Hutt and Otago, Ashburton, Harbour City and Otago Club Champs, North Shore Autumn, Papatoetoe Winter and Canterbury's Chas L Hart Memorial.

The numbers in brackets refer to the number of games rated this period.

|    |                   |         |       |     |                   |         |       |
|----|-------------------|---------|-------|-----|-------------------|---------|-------|
| 1  | MARTIN B M S      | OT (23) | 2337  | 61  | MCNALLY I         | AC (9)  | 1916  |
| 2  | KER A F           | CI (11) | 2325  |     | WALDEN G J        | HP      | 1916  |
| 3  | SUTTON R J        | OT (24) | 2296  | 63  | SCOTT M J         | WT      | 1912  |
| 4  | NOKES R I         | NS (5)  | 2280  |     | VAN GINKEL J P    | NE      | 1912  |
| 5  | SARAPU O          | NS      | 2279  | 65  | ABRAHAMSON P      | CA      | 1910  |
| 6  | GARBETT P A       | NS (14) | 2272  | 66  | NIJMAN B          | CA (19) | 1907  |
| 7  | DIVE R J          | CI (34) | 2267  | 67  | NIJMAN A J        | CA (13) | 1904  |
| 8  | APTEKAR L         | CI (4)  | 2236  | 68  | MARNER G          | HC (8)  | 1900  |
| 9  | GREEN E M         | NS      | 2235  | 69  | FOSTER F M        |         | 1897  |
| 10 | SMITH R W         | WT (17) | 2232  | 70  | GOODHUE N         | HC (16) | 1894  |
| 11 | GREEN P R         | AC (15) | 2231  | 71  | COOPER D J        | WA      | 1891  |
| 12 | DUDENKOV A        | CI      | 2220  |     | MARTIN-BUSS B     | WT (5)  | 1891  |
| 13 | SARFATI J D       | WE (12) | 2211  | 73  | SUTHERLAND J L    | CA      | 1888  |
| 14 | DREYER M P        | AC (9)  | 2187  | 74  | DORNE W           | UH      | 1881* |
| 15 | SPAIN G A         | TE (23) | 2180  |     | HART S            | PT      | 1881  |
| 16 | HAMEL M           | CI      | 2176  | 76  | O'SIOCHRU M       | OT (16) | 1880  |
| 17 | NOBLE M F         | HC (35) | 2139  | 77  | LYNN K W          | HA      | 1879  |
| 18 | STUART P W        | NS (18) | 2138  | 78  | FRANKEL Z         | WE      | 1873  |
| 19 | LOVE A J          | OT (9)  | 2128  | 79  | CALCENA A S       | RO      | 1867  |
| 20 | LEONHARDT W       | NS (5)  | 2115  | 80  | BENNETT H P       | HA (26) | 1864  |
| 21 | LUKEY S G         | CA      | 2112  |     | POMEROY D M       |         | 1864  |
| 22 | POMEROY A J       | CI (9)  | 2094  |     | SIMS I M          |         | 1864  |
| 23 | OLMEDO R          | PN      | 2073* | 83  | LIM B             | AC      | 1862  |
| 24 | HOPEWELL N H      | AC (5)  | 2070  |     | WASTNEY S         | CA (14) | 1862  |
| 25 | WEIR P B          | NS (5)  | 2067  | 85  | MCDONALD J A      | CI (23) | 1861  |
| 26 | FITZPATRICK S P   | WT      | 2066  | 86  | WIGBOUT M         | CC      | 1860  |
|    | REYN I            | CI (6)  | 2066  | 87  | VAN PELT J        | WT      | 1858  |
| 28 | FREEMAN M R       | NP (13) | 2064  | 88  | GARNETT L         | HH      | 1857  |
| 29 | SPENCER-SMITH G J | OT      | 2059  |     | VINCENT M B       | OT (21) | 1857  |
| 30 | WEGENAAR D P      | CA      | 2056  | 90  | SIMS M T          | UH (1)  | 1848  |
| 31 | METGE J N         | AC (17) | 2048  | 91  | COLLINS P W       | HC (7)  | 1844  |
| 32 | DOWDEN R A        | OT (15) | 2047  | 92  | MOOI K O          | WE (3)  | 1841  |
|    | ROBINSON J P      | WT (5)  | 2047  | 93  | RUPASINGHE S D    | WE (24) | 1835  |
| 34 | STEADMAN M V R    | AC      | 2035  |     | TURNER M G        | CA (12) | 1835  |
| 35 | MCKENZIE P D      | CA      | 2031  | 95  | NOTLEY D G        | HP (8)  | 1829  |
| 36 | KER C M           | HC (8)  | 2029  | 96  | VETHARANIAM P A R | WA      | 1828  |
| 37 | ALDRIDGE G J      | CI (8)  | 2024  | 97  | EVANS D J         | NS      | 1825* |
| 38 | PEL W             | NS (5)  | 2009* | 98  | SINTON P J        | OT (34) | 1823  |
| 39 | HART R            | NS (5)  | 1996  | 99  | WHITLOCK H P      | WA      | 1822  |
|    | WHEELER B         | AC (5)  | 1996  | 100 | BRIMBLE M T       | PN      | 1819  |
| 41 | BARLOW M J        | NS      | 1995  | 101 | EAST S            | PT (12) | 1815  |
| 42 | SPILLER P S       | HP (8)  | 1994  | 102 | WILLIAMS B M      | AC      | 1805  |
| 43 | JOHNSTON A J      | CI (3)  | 1989  | 103 | BLAXALL N         | PT (5)  | 1795  |
| 44 | CARPINTER B A     | CI (5)  | 1985  | 104 | CATER J E         | WT (5)  | 1792  |
| 45 | SIDNAM G S C K    | NS (5)  | 1982* | 105 | LEZARD G          | WE (9)  | 1787  |
| 46 | WALSH B G         | HA      | 1978  | 106 | MULLAN A B        | CI      | 1786  |
| 47 | HAASE G G         | OT (5)  | 1977  | 107 | BLAXALL C S       | PT      | 1785  |
| 48 | ELLIOT D B        | NS (13) | 1966  | 108 | HELBIG R          | (8)     | 1778* |
| 49 | HEREMIA D         | UH (2)  | 1964* |     | TEOH S H          | WE      | 1778* |
| 50 | GIBBONS R E       | AC (4)  | 1961  | 110 | O'BOYLE D         | UH      | 1776  |
| 51 | BOYD K M          | OT (33) | 1956  | 111 | POW K             | AS (10) | 1775  |
|    | HAWKES P D        | CI (8)  | 1956  | 112 | EDWARDS D W       | CA (5)  | 1774  |
| 53 | ION G J           | NS (15) | 1942  | 113 | BANKS G B         | PT (17) | 1771  |
| 54 | DUNN P            | CI      | 1941  |     | POST M J          | WA (4)  | 1771  |
|    | JORDAN A W        | CI (1)  | 1941  | 115 | LAM D K W         | AC (5)  | 1755* |
| 56 | STEVENSON T       | WE (1)  | 1930  | 116 | ALDRIDGE A L      | CI (19) | 1750  |
|    | VAN DER HOORN M W | HC (21) | 1930  | 117 | SMITH V J         | WT      | 1749  |
| 58 | TUFFERIES P B     | NP (36) | 1929  | 118 | JEFFERIES A       | CA (6)  | 1748  |
| 59 | MONRAD P G        | HC (21) | 1925  | 119 | VAN NOBELEN R     | CA      | 1745  |
| 60 | WHITEHOUSE L E    | HA (23) | 1917  | 120 | REWETI M          | UH (1)  | 1741* |

|     |                 |         |       |        |                   |         |       |             |                  |         |                  |             |                |         |       |
|-----|-----------------|---------|-------|--------|-------------------|---------|-------|-------------|------------------|---------|------------------|-------------|----------------|---------|-------|
| 121 | BOYCE D A L     | NE ( 8) | 1740  | BOAG P | CA                | 1602    | 265   | WALLIS P    | PT ( 5)          | 1491    | STEPHENSON S C R | AS (10)     | 1371           |         |       |
| 122 | CHIN H Y        | OT ( 9) | 1734* | SHAW M | CA ( 5)           | 1602*   | 266   | BROUGHTON J | HA ( 5)          | 1486    | 338              | FRESTON J N | IN             | 1366    |       |
| 123 | FOORD M R R     | OT (11) | 1731  | 195    | BARROW G          | WE ( 8) | 1600  | 267         | CRENSHAW R D     | CA      | 1485             | 339         | ANDRIOLIC F    | HC ( 8) | 1359* |
|     | LARK D          | HP      | 1731  | 196    | DAVIS J M         | HH (13) | 1598  | 268         | DWYER T          | WT      | 1479             |             | SCHURR R       | KP ( 2) | 1359  |
| 125 | COMPTON A       | CA ( 6) | 1727  | 197    | WORN J            | PT ( 7) | 1596  | 269         | MCARTHUR J       | IN ( 5) | 1477*            | 341         | FERNANDO T     | AC ( 4) | 1357* |
| 126 | BROWNLEE L R    | NS      | 1725  | 198    | PRICE S           | HP ( 5) | 1595  |             | TALALIC L        | NS      | 1477             |             | GIBB J L       | WA      | 1357  |
| 127 | GORIS R         | WT (18) | 1723  | 199    | POWELL R A        | WE ( 4) | 1594  | 271         | HEPERI D         | OT (25) | 1476             | 343         | MCINTOSH J     | OT (14) | 1356  |
|     | ROBERTS M H     | CI      | 1723  |        | RENTNER E         | CA ( 3) | 1594* | 272         | ROSSITER P E     | HA ( 5) | 1475*            |             | STEWART B K    | (10)    | 1356  |
|     | TAYLOR R        | HP      | 1723  | 201    | GIBBONS E         | PN      | 1592* | 273         | SULLIVAN G E     | NS (17) | 1471             | 345         | PATTINSON N    | PT (13) | 1354  |
| 130 | JOEL C          | AC ( 5) | 1722  |        | SCARF R           | AS (10) | 1592  | 274         | WOOD C           | AS (10) | 1469             | 346         | ANDERSON G     | UH      | 1351  |
| 131 | SKERRET M       | IN      | 1721* | 203    | KUMAR S           | WE (12) | 1590  | 275         | WYLIE M          | IN (10) | 1466             |             | RUSSEL T       | CA ( 5) | 1351* |
| 132 | ADAMS J M       | CC ( 4) | 1718  |        | SNELSON P R       | NS ( 7) | 1590  | 276         | GOGA V           |         | 1464             | 348         | GUTHRIE D W    | OT (22) | 1349  |
| 133 | CARTER G S      | UH ( 3) | 1717  | 205    | WINFIELD A        | CI (18) | 1588  | 277         | EASTERLOW N      | WT (23) | 1463             |             | KOIA A         | HC ( 8) | 1349  |
| 134 | RAYNER E        | OT (11) | 1711  | 206    | CAMPBELL L S      | OT      | 1587  | 278         | MCELWEE I        | CI ( 2) | 1460             | 350         | GRANDFIELD A W | OT (15) | 1347  |
|     | CRUDEN N        | NP (13) | 1711  | 207    | REID A            | UH      | 1586  | 279         | BOURDOT B        | CA      | 1459*            | 351         | ROSIE E        | CA ( 6) | 1346  |
|     | SCHWASS M P     | WE ( 9) | 1711  | 208    | BURNHAM D S       | WA      | 1585  | 280         | MORROW D         | WT (10) | 1458             | 352         | DONALDSON J    | UH      | 1345* |
| 137 | MITCHELL R S    |         | 1709  |        | FRASER C          | CA ( 6) | 1585* |             | NEILSON J        | TE ( 8) | 1458             |             | STEVENS B S    | OT (14) | 1345  |
| 138 | WHITEHOUSE C    | WT (10) | 1706  |        | SANDERS W         | PN      | 1585* | 282         | ALLEN E G        | CC ( 8) | 1456             | 354         | BUNCE C        | IN ( 5) | 1344  |
| 139 | EMETT B G       | NS (22) | 1702  | 211    | LANGLEY D B       | NS ( 7) | 1580  |             | OVESEN J         | OT ( 5) | 1456*            | 355         | CROSBIE P      | PT      | 1343  |
| 140 | STOREY D J H    | PT (27) | 1700  | 212    | CROMBIE W R       | HA      | 1579* |             | FLEDGER T K      | WE      | 1456             | 356         | HURLEY P       | IN ( 5) | 1342  |
| 141 | BRUNTON D M     | PT ( 7) | 1697  | 213    | LUKETINA I        | UH      | 1576  | 285         | ARVIN E M        |         | 1455             | 357         | WHITAKER B     | AC ( 8) | 1340  |
|     | METGE K         | PT (30) | 1697  | 214    | REID I            | PT      | 1573* |             | WYNGOUT R        | CI      | 1455             | 358         | LYNCH P        | PT (17) | 1339  |
| 143 | ROBERTS E N     | KP ( 4) | 1696* | 215    | ARNULL V E        | CI      | 1571  | 287         | PYNE T           | IN ( 5) | 1450             | 359         | KWOK A         | OT (13) | 1337  |
| 144 | EDWARDS R       | OT (36) | 1695  | 216    | MILNE D J O       | NS ( 6) | 1570  | 288         | MEARS G W        | NS (24) | 1449             |             | METGE R        | PT (30) | 1337  |
| 145 | VENKATRAMAN B   | CI ( 7) | 1693* |        | WHIBLEY J         | KP ( 5) | 1570* | 289         | HOOTON B         | AC ( 8) | 1448             | 361         | TUFFERY E      | NP (27) | 1335  |
| 146 | DOLEJS D        | NE ( 8) | 1686  | 218    | MASTORAKIS T      | WE ( 7) | 1567* | 290         | BEN-ISRAEL L     | WA      | 1447             | 362         | NEILSON P      | TE ( 8) | 1332  |
| 147 | GOODWILLIE C    | HH ( 5) | 1684  | 219    | BOJTOR J          | HP (23) | 1565  | 291         | FISCHER F        | IN ( 5) | 1445*            | 363         | GREVERS L P    | NS (12) | 1330  |
| 148 | COATES S        | CA ( 6) | 1683* | 220    | CURRIE G          | AC      | 1564* | 292         | GILHOOLY B       | HC ( 7) | 1442*            | 364         | GUERIN G       | CA (13) | 1329  |
|     | MCCAUGHAN D J   | OT (13) | 1683  | 221    | MARSICK B H P     | PT (21) | 1560  |             | HOWARD A B       | AC      | 1442*            | 365         | FADDY J        | OT      | 1326* |
| 150 | MACKWAY-JONES R | IN ( 5) | 1672  | 222    | BISHOP A          | CI      | 1559  | 294         | EDMONDS M        | CA ( 7) | 1437*            | 366         | REID D         | OT (14) | 1325  |
|     | STRACY D M      | HC (42) | 1672  | 223    | JOHNSON Q         | CA      | 1558  | 295         | PAINO R          | CI      | 1436             | 367         | SHIELDS J A    | WT      | 1322  |
| 152 | BELL C M        | UH ( 2) | 1671  |        | KASMARA A H       | PK ( 5) | 1558  | 296         | AUSTIN K R       | NP ( 8) | 1434             | 368         | WINTER W       | UH      | 1321  |
| 153 | AIMERS G        | OT (14) | 1669  | 225    | FREEMAN B W       | OT ( 2) | 1556  |             | WATSON R         | WT ( 5) | 1434             | 369         | TAYLOR S       | HA (15) | 1319  |
| 154 | BISHOP R F      | CC ( 8) | 1668  |        | FUATAI F          | PT (17) | 1556  | 298         | CARADOC-DAVIES B | OT ( 9) | 1433*            | 370         | MILLAR B       | WT ( 5) | 1317* |
| 155 | WARD K          | AC      | 1667* | 227    | YOUNG G           | HA      | 1552* |             | JORDON P         | CA ( 5) | 1433             | 371         | WEBBER H       | HP ( 5) | 1316* |
| 156 | LAMBOURNE G     | OT ( 4) | 1662  | 228    | STOTT C J         | HP (18) | 1550  | 300         | HAMPTON R        | PT (12) | 1427             | 372         | RAWNSLEY D C   | HP (13) | 1315  |
|     | MCDONALD C      | CI      | 1662  | 229    | STANTON R A       | WE      | 1547  | 301         | COLLINS L        | PT (13) | 1426             | 373         | LIVALLI I      | PT      | 1314  |
|     | OKEY K M        | NP (21) | 1662  |        | STRETCH W R       | NS      | 1547  | 302         | HOFFMANN F       | WE ( 6) | 1425             | 374         | FORSYTH E      | IN      | 1313  |
| 159 | VECOVSKY M L    | OT (27) | 1661  | 231    | BARCH G           | HA      | 1545* |             | WARD C           | WA      | 1425             | 375         | FULLER R       | PT ( 8) | 1312  |
| 160 | RAIZIS T        | OT      | 1660  | 232    | RAMSAY W          | CI (14) | 1543  | 304         | TAN J            | CI      | 1423*            | 376         | ALES H         | NS ( 4) | 1311  |
| 161 | LA CUNZA A      | KP (10) | 1656  | 233    | THYE G F          | AC      | 1542  | 305         | JACKSON L R      | WE (24) | 1422             | 377         | MILLS M        | PT      | 1309  |
| 162 | BUIS M          | PT ( 7) | 1655  | 234    | TAYLOR S          | AS (10) | 1539  | 306         | VAN BODEGRAVEN T | CI (14) | 1420             | 378         | STONE R G      | OT (24) | 1308  |
| 163 | HIMONA P        | RO      | 1652* | 235    | CAPPER D S        | CI (31) | 1537  | 307         | SAVAGE B         | WT      | 1418             | 379         | JOYCE C        | OT      | 1306* |
| 164 | GRAINGER S      | WE (17) | 1651  |        | GLOISTEIN B       | CA (12) | 1537  | 308         | HOLDEN J         | CI      | 1417*            | 380         | BOROVSKIS J    | HP      | 1297  |
| 165 | CASLANG A       | AC ( 5) | 1650  | 237    | DUFFIELD T        | OT (29) | 1535  |             | RUBINI B         | NS      | 1417             |             | SHAW P         | WE      | 1297* |
| 166 | FROST E G A     | WE (30) | 1647  | 238    | HUDSON S          | CA      | 1534  | 310         | WONG K           | WE ( 4) | 1414             | 382         | FOWLER A       | WE (11) | 1296  |
| 167 | GLOVER R        | UH (26) | 1645  | 239    | O'CONNOR J A      | WT ( 5) | 1531  | 311         | WILSON C         | PT (23) | 1406             | 383         | SCHULTZ A E    | WE ( 6) | 1295  |
|     | VAN DAM S       | AC ( 5) | 1645  | 240    | KAY J B           | CI (18) | 1527  | 312         | MCCALL A         | IN ( 5) | 1404             | 384         | FREDERICKSON J | UH (10) | 1293  |
|     | BOOTH A J       | HP ( 5) | 1645  | 241    | PETROVE E M       | ( 8)    | 1526  | 313         | GOLD H           | OT (30) | 1403             |             | PETI L         | PT ( 8) | 1293  |
|     | WOOD R J        | CI ( 6) | 1645  |        | PALMER B          | WT (10) | 1526  | 314         | BANNISTER C      | OT ( 7) | 1400             | 386         | SOUTHGATE B    | CI ( 5) | 1292  |
| 171 | REYNOLDS C P    | NS ( 5) | 1640  |        | BENNETT R         | AC      | 1526  |             | MORRISON M K     | NS (44) | 1400             | 387         | BARTOCCI K D   | AC (10) | 1290  |
| 172 | SINCLAIR M      | RO ( 7) | 1635* |        | STEWART M I       | ( 5)    | 1526  | 316         | FARRINGTON L     | WE (28) | 1399             | 388         | DAGNINO F      | HP (10) | 1289* |
| 173 | PRICE A J       | UH ( 5) | 1634  | 245    | KELLY S           | CA ( 6) | 1525  |             | GRIFFIN P        | HA (10) | 1399*            | 389         | GARLAND M      | AC (10) | 1287  |
| 174 | HAIR P I        | NS (25) | 1633  | 246    | MCINTOSH I H      | OT (22) | 1524  |             | WELLS D          | CA      | 1399             |             | MCCARTHY P D   | PT ( 8) | 1287  |
| 175 | CHOO T N        |         | 1632  | 247    | UMIT G            | OT ( 5) | 1523* | 319         | BALDWIN P        | HP      | 1398             | 391         | ROSE P         | CI      | 1284* |
| 176 | BORREN A M      | KP ( 6) | 1631  | 248    | SHAW G            | OT ( 9) | 1518  |             | GONIN R C E      | OT (12) | 1398             |             | WRIGHT C       | CA ( 6) | 1284  |
| 177 | VON'T STEEN R   | UH      | 1630  | 249    | SPENCER-SMITH P A | NS ( 5) | 1516  | 321         | CUNNINGHAM P D   | UH ( 8) | 1397             | 393         | KIRKMAN M      | AC      | 1281* |
| 178 | COOK F          | UH ( 5) | 1629  | 250    | SWAYNE E          | PT (30) | 1515  |             | LIM D            | AC      | 1397             | 394         | WILLIAMS B     | OT      | 1280* |
| 179 | BOYD D J        | NS (12) | 1627  | 251    | COWEN M           | CI (12) | 1514  |             | TRUNDLE G E      | AC      | 1397             | 395         | RENOUF T       | PT (13) | 1279  |
| 180 | ABURN S         | WE ( 5) | 1626  | 252    | LILLIS D          | CI      | 1513  | 324         | CARTWRIGHT J R   | AS (10) | 1394             | 396         | BOWLER R       | NP ( 8) | 1276  |
|     | DRAKE A S       | UH      | 1626  | 253    | SHARDY Z          | CI      | 1510  | 325         | WINSOR B M       | NS ( 6) | 1390             |             | JONES G M      | NS (12) | 1276  |
| 182 | JACKSON R       | AC ( 5) | 1622  | 254    | SHEAD A T         | NS (17) | 1509  | 326         | SADLER M         | CA ( 6) | 1387*            | 398         | BLACKMAN J     | WE ( 4) | 1275* |
| 183 | HOSKYN G A      | WA      | 1620  | 255    | OGLIER J          | IN ( 5) | 1507  | 327         | SINGH J          | AC      | 1386*            | 399         | MACDONALD J R  | AS (10) | 1271  |
| 184 | KING P C        | CI (12) | 1616  | 256    | GULLIVER M        | TE      | 1502  | 328         | SWARBRICK J      | CA      | 1385             | 400         | GILLESPIE J G  | CI ( 1) | 1270  |
| 185 | GILL G          | AC (10) | 1615  |        | COCKCROFT J M     | NS (21) | 1502  | 329         | BEATTIE D        | HP      | 1382*            | 401         | RUNGE K        | OT ( 5) | 1269* |
| 186 | SHEAD D B       | NS      | 1611  |        | LOUDEN A          | OT      | 1502  | 330         | KEELING R L      | AS (10) | 1379             |             | WILKES G       | OT      | 1269* |
| 187 | DIXON H A       | CI ( 4) | 1608  | 259    | RICHARDSON N J    | AS (10) | 1501  |             | WATSON M J       | AC      | 1379             | 403         | CROSLAND G W   | WT ( 5) | 1267  |
| 188 | FORSTER W       | CI      | 1607  | 260    | JOHNSTONE R B     | NS ( 5) | 1499  | 332         | CLARKSON R D     | OT      | 1376             | 404         | EADES D        | NS (11) | 1265* |
| 189 | MULLIGAN A W    | AS      | 1606  | 261    | CHAN M            | PT      | 1497  | 333         | RAYNER R         | PN (15) | 1375             | 405         | LEVY G         | OT      | 1264  |
| 190 | MAZUR J J       | CI (13) | 1605  | 262    | ZWART I           | NS      | 1495  | 334         | WIEDERKEHR W     | MM ( 8) | 1374             | 406         | CLARK R        | CA ( 5) | 1262  |
| 191 | BEESELY R       | HA (20) | 1603  | 263    | BURNS C J         | WA ( 8) | 1494  | 335         | BENNETT S T      | AS (10) | 1371             |             | WINSHIP A      | WT ( 5) | 1262* |
| 192 | BELL D I        | WA      | 1602  |        | MCINTOSH J        | KP ( 4) | 1494* |             | NEILSON G        | TE      | 1371*            | 408         | WALKER C       | WT ( 9) | 1258  |

|     |                 |         |       |     |              |         |       |
|-----|-----------------|---------|-------|-----|--------------|---------|-------|
| 409 | HARRIS K        | UH      | 1257  | 481 | HENRY R      | WE ( 6) | 1107* |
| 410 | DAY B           |         | 1253* |     | VECOVSKY C   | OT (11) | 1107* |
| 411 | NG L            | AS (10) | 1252  | 483 | HOLDO K      | CA      | 1100* |
|     | TENNANT K       | DP      | 1252* |     | MOFFITT A    | PN      | 1100* |
| 413 | WAGSTAFF G C    | NS ( 7) | 1250  | 485 | WEBBER C H   | UH      | 1095  |
| 414 | KARA D          | ( 6)    | 1248* | 486 | WOODHAMS T   | DP      | 1091* |
| 415 | BACKHOUSE C     | UH ( 2) | 1244* | 487 | TURNER B     | PT      | 1090  |
| 416 | NEWMAN B        | UH      | 1243  | 488 | HAY V        | OT      | 1089  |
| 417 | EDMONDS L G     | HP      | 1238  | 489 | EVERITT T H  | OT ( 8) | 1086  |
|     | LINDSAY P       | IN ( 4) | 1238  | 490 | LAWSON S     | WT ( 8) | 1083* |
| 419 | GORDON R        | HH ( 8) | 1235  | 491 | POWERS G     | UH ( 1) | 1082* |
| 420 | GREER K         | OT      | 1233* | 492 | WATSON L     | MM      | 1081* |
| 421 | HELLYAR M       | AC      | 1232  | 493 | SMITH A      | IN ( 5) | 1080  |
|     | IBELL M         | NS (12) | 1232* | 494 | OTENE E      | NS (13) | 1077  |
| 423 | GRAY A          | UH ( 3) | 1229* | 495 | HARRIS B     | OT      | 1074* |
|     | HALL D          | NS (12) | 1229* | 496 | DAWSON N     | IN ( 4) | 1058* |
| 425 | CHANG A R       | OT (13) | 1226  | 497 | MOSKOVIS B   | AS      | 1057* |
| 426 | WONG K          | NS ( 7) | 1225  | 498 | CAMERON D    | OT (18) | 1055  |
| 427 | PATERSON S      |         | 1222* | 499 | ATKINSON G   | PT      | 1046* |
| 428 | POORTMAN P      | WT      | 1220* | 500 | VINCENT D A  | AC (13) | 1039  |
| 429 | GROOTHUIZEN P   | PT ( 8) | 1219  | 501 | PETRASICH T  | WT      | 1033* |
|     | GUY M           | CA ( 4) | 1219* | 502 | COSTELLO D   | WE      | 1027* |
| 431 | VAN ZOOMEREN J  | OT (14) | 1216  |     | OLSEN S      | PT      | 1027* |
| 432 | TURNER P        | PT (26) | 1214  | 504 | MCINTYRE I M | NS      | 1026* |
| 433 | MCRAE J         | PT (26) | 1213  | 505 | RAKOCZY G    | RO      | 1023  |
| 434 | CLEARWATER G    | IN      | 1211* | 506 | SWALLOW S    | CA      | 1013* |
| 435 | PATEL S         | AC      | 1210  | 507 | MANNING J W  | NS ( 6) | 1008* |
| 436 | BRIDGER M       | UH ( 4) | 1204  | 508 | POTROZ L     | NE ( 7) | 1007* |
| 437 | NEAL R M        | PT      | 1201  | 509 | WHITE S J    | UH      | 1004  |
| 438 | STOREY K        | PT ( 8) | 1196  | 510 | SIM M        | CA      | 993*  |
| 439 | MCGURK A        | IN ( 5) | 1194  | 511 | DOOLEY S     | WE      | 991*  |
| 440 | IVANOV Z        |         | 1192  | 512 | SHAW R       | KP (13) | 988   |
| 441 | MEADER A        | WT ( 5) | 1190* | 513 | BROWN M      |         | 983*  |
| 442 | CHAPMAN J       | PN      | 1189* | 514 | SERONG J     | OT      | 978*  |
| 443 | PATSTON G       | CA ( 5) | 1188  | 515 | BOEKHOLT E   | UH ( 2) | 977*  |
| 444 | HEASLIP P T R   | ( 5)    | 1186* | 516 | WHITTLE J    | HA      | 966*  |
| 445 | JONES S         | OT      | 1185* | 517 | NEILSON S    | TE      | 965   |
| 446 | COURTNEY H      | WT (14) | 1183  | 518 | MCNABB M     | CA      | 963*  |
|     | GOGA R          |         | 1183* | 519 | PIRIE B      | KP ( 4) | 960*  |
| 448 | MILLS G         | KP (11) | 1182  | 520 | FROST P      | OT      | 959*  |
| 449 | KIRK J          | CA      | 1181* | 521 | ATKINSON J   | CA      | 951*  |
| 450 | MCLEAN W        | HH ( 6) | 1180* | 522 | CASTEL N     | CA ( 4) | 948*  |
| 451 | PATTON A        | OT ( 5) | 1177  |     | RUDLAND M    | PT (12) | 948*  |
| 452 | CASSIDY M       | UH      | 1176* | 524 | SUTTON B     | NA ( 4) | 947*  |
|     | TWEDDEL E       | WT      | 1176  | 525 | WILTON H     | NS      | 946   |
| 454 | LUI E           | HA      | 1173* | 526 | GARDNER J    | WA      | 944*  |
| 455 | SARFAS E        | CI ( 2) | 1171* | 527 | MULLIGAN E   |         | 939*  |
|     | SULLIVAN B      | PK      | 1171  | 528 | CHANDLER B   | UH      | 929   |
| 457 | VAN DER MEY P F | NS ( 7) | 1170  | 529 | ANNAN D      | OT ( 8) | 925*  |
| 458 | THOMPSON F      | NE ( 7) | 1169* | 530 | MICHAELSON M | HH      | 917*  |
|     | WILLIAMS V      | WT ( 5) | 1169* | 531 | DUNN A       | PT ( 4) | 905*  |
| 460 | LAMBERT C       | PT      | 1168  | 532 | COLEMAN G    | PT ( 8) | 902   |
| 461 | OLSEN P         | PT ( 5) | 1167  | 533 | CARTER M     | PK ( 4) | 898*  |
| 462 | NATH V          | IN      | 1166* | 534 | HOLDEN F     |         | 895*  |
|     | STUBBS B        | AC      | 1166* | 535 | BOLTON C     | NP ( 6) | 888*  |
| 464 | FERRIS P        | PT      | 1163* | 536 | HOLDEN C     |         | 887*  |
| 465 | FROST D         | TE      | 1159* | 537 | WATSON T     | AS      | 882*  |
|     | HUDEPOHL H      | UH      | 1159  | 538 | SALLAI M A   | AC ( 2) | 869*  |
| 467 | BRADY P         | NS      | 1149* |     | TEW J        | AS      | 869*  |
|     | SALMEN M        | PN      | 1149* | 540 | MACLEAN C G  | NS ( 7) | 853*  |
| 469 | ESCOTT F G      | NS (11) | 1144* | 541 | SAMUELS T    | WT      | 851*  |
| 470 | TRAN J          | PT ( 8) | 1139  | 542 | KING N       | PT ( 8) | 845*  |
| 471 | PALMER J C      | HA ( 5) | 1138* | 543 | KINGSTON Z   | KP ( 6) | 844*  |
| 472 | CATER A         | WT ( 5) | 1136* | 544 | OLASA J      | PN      | 838*  |
|     | JONES M         | HV ( 1) | 1136  | 545 | STEPHENS R C | UH      | 825*  |
| 474 | BARKER A        | HH      | 1135* | 546 | JOHNSON N    | OT ( 2) | 824*  |
| 475 | JOHNS D P       | NS ( 5) | 1130* | 547 | LUCAS P      | AS      | 817*  |
| 476 | PHILLIPS J      | CI      | 1129* | 548 | HEERDEGEN P  | PT      | 809*  |
| 477 | SCHULZ A        | CA      | 1120* | 549 | NATH V       | IN      | 799*  |
| 478 | SULLIVAN G J    | UH      | 1114  | 550 | KNIGHTON P   | OT ( 5) | 791*  |
| 479 | GALES A E       | NS ( 6) | 1111  | 551 | HAYES R      | KP ( 3) | 763*  |
| 480 | RYAN T          | WT      | 1110* | 552 | PHILLIPS R   | PK ( 5) | 755*  |

points. Next, on 6½, were GMs Gavrikov (USR), Hort (GER), King (ENG), Klinger (OST) and Petursson (ICE).

Among those on 6 were GMs Campora (ARG), Flear (ENG) and Sosonko (NLD) while Gms Barbero (ARG), Ciric (YUG) and Gheorghiu (RUM) were in the large group finishing on 5½.

☆ ☆ ☆

## BRNO

The main interest in this event lies in the final scores. No fewer than six of the ten players tied for first place: 1-6 GM Dautov (USR), GM Epishin (USR), GM Mokry (CZE), WGM Z. Polgar (HUN), GM Rogers (AUS) & GM Shirov (LAT) 5; 7-8 WGM J. Polgar (HUN) & GM Stohl (CZE) 4½; 9 GM Murshed (BAN) 3½; 10 GM Bönsch (GER) 2½.

☆ ☆ ☆

## OSTENDE

Tony Miles won the Open tournament in October with 8/9 and Michael Adams, England's youngest GM, took clear second place on 7½. Sharing third were GM M. Gurevich (BEL), IM A. Kuzmin (USR), IM Schmittdiel (GER), GM Timoshenko (USR) and GM Vizmanav- gin on 7. There were 217 competitors.

☆ ☆ ☆

## WOMEN'S WORLD CHAMPIONSHIP

The Soviet monopoly on women's world champions came to an end at Manila in October when the Chinese challenger Xie Jun defeated Maya Chiburdanidze 8½ - 6½.

Xie drew first blood in game 3 but the Georgian struck back with consecutive wins in the next two games. Unfortunately for her they were also her last wins while Xie won games 8, 11 and 13.

It is noteworthy that the match paired the third and sixth ranked women in the world - top is Judit Polgar (2550) and second Zsuzsa Polgar (2535) but neither has any interest in the world title.

☆ ☆ ☆

## VIENNA

American GM Larry Christiansen scored his second impressive victory this year in the Austrian capital. His 7½/9 game him a 1½ point margin over second-placed GM Epishin (USR) while GMs Mokry (CZE), Nunn (ENG) & Ribli (HUN) shared third place with WGM Judit Polgar (HUN) on 5½. Then came: 7 GM Kindermann (GER) 4; 8-10 IM Brestian (OST), IM Fauland (OST) & Schroll (OST) 2.

Polgar gained her second GM norm in the category 12 event.

☆ ☆ ☆

## TILBURG

The 15th Interpolis tournament included 5 of the world's top 10 and, with an average rating of 2666, was statistically marginally stronger than Linares earlier this year.

Kasparov took a clear lead after just two rounds and had 5½/7 at the halfway point yet Viswanathan Anand was only a half point back. The Indian GM, however, could not maintain his consistency in the second half and, despite beating the world champion in their second clash, he could only finish third - still a very fine result in such an event.

Nigel Short scored very steadily throughout and, with one round to go, shared second place with Karpov and Anand. While he was winning against Kamsky in the last round, Anand drew in 12 moves against Bareev and Karpov lost to Kasparov.

The normal order of the last two rounds in each half of the double rounder was changed - possibly in the hope of a K v K climax; however, the champion had the tournament already won by this time.

Karpov was slow out of the blocks, drawing his first five games before losing to Candidates rival Anand in round 6. Despite his last round loss he equalled Kasparov's score in the second half.

# LOCAL NEWS

**BRUCE MARSICK**, one of New Zealand's most popular and active tournament players, died suddenly on 20th November. An obituary will appear in the February 1992 issue.

*Tony Love's column in the Otago Daily Times. Moss Wylie, Invercargill, got three prizes; third equal in A, first in B and the upset. Hamish Gold took the C grade.)*

The Upper Hutt tournament was held over two days and attracted 15 players and one computer. Five plus one computer played a round-robin in the A grade. Mark Noble had a tournament he would rather forget, despite finishing third equal with Michael Schwass, 1.5 points behind **Martin Post** and the computer on 4. An unbalanced tournament!? The B grade was won by **Ted Frost and Richard Glover** on 4 from Don Stracy on 3.5.

The weather must have been good in Auckland because a meagre nine players turned up for the Auckland Chess Centre's tournament. **Peter Green** had little trouble in notching up the maximum of five, two points clear of Ian McNally, Don Storey, Fuatai Fuatai and Brian Whitaker.

## NAPIER

The Napier club closes relatively early. They reckon it gets too hot come November! The final night featured a six-round time handicap, ranging from two minutes to 15. Tony Boswell was DOP and the club enjoyed support from Hastings and Havelock North.

Mark Lancaster (2.5 mins) won the trophy with six wins followed

One of our rating people, Rowan Wood, put together a short review of Labour Weekend events which, presumably, had been sent in for rating. 40 people turned out for the three tournaments! Let's hope it is not indicative of the attendance at future events. Like this year's championship. A week after the second October council meeting, we didn't have a single entry. They started to trickle in sometime in November.

## LABOUR OF CHESS

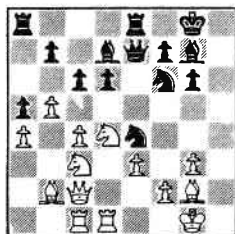
Three tournaments were held at Labour Weekend, the last chance to improve ratings prior to the New Zealand Championship selection. Most top players chose to ignore this opportunity, however.

In the UBIX Copiers Otago tourney, **Richard Sutton** warmed up for Congress by erecting a picket fence against moderate opposition. Kendall Boyd was second on 4/5 with Paul Vecovsky and Moss Wylie third equal, half a point further back. 16 players competed.

*(In the middle of exams, Tony Dowden managed to send a note on this event and a cutting from*

|                       | 1   | 2   | 3   | 4   | 5   | 6   | 7   | 8   |    |
|-----------------------|-----|-----|-----|-----|-----|-----|-----|-----|----|
| 1 Kasparov USA g 2770 | x x | ½ ½ | 1 0 | ½ 1 | ½ ½ | 1 1 | 1 ½ | 1 1 | 10 |
| 2 Short ENG g 2660    | ½ ½ | x x | 0 ½ | ½ ½ | 1 1 | 1 ½ | ½ ½ | 1 ½ | 8½ |
| 3 Anand IND g 2650    | 0 1 | 1 ½ | x x | 1 0 | 1 0 | 0 ½ | 1 ½ | 1 ½ | 8  |
| 4 Karpov USA g 2730   | ½ 0 | ½ ½ | 0 1 | x x | ½ 0 | ½ 1 | 1 ½ | 1 ½ | 7½ |
| 5 Kamsky USA g 2595   | ½ ½ | 0 0 | 0 1 | ½ 1 | x x | 1 0 | ½ ½ | ½ 1 | 7  |
| 6 Timman NLD g 2630   | 0 0 | 0 ½ | 1 ½ | ½ 0 | 0 1 | x x | 1 0 | 1 1 | 6½ |
| 7 Korchnoi SWI g 2610 | 0 ½ | ½ ½ | 0 ½ | ½ 0 | ½ ½ | 0 1 | x x | ½ ½ | 5½ |
| 8 Bareev USA g 2680   | 0 0 | 0 ½ | 0 ½ | ½ 0 | ½ 0 | 0 0 | ½ ½ | x x | 3  |

TIMMAN - KASPAROV, King's Indian:  
 1 d4 Nf6 2 c4 g6 3 Nf3 Bg7 4 g3  
 0-0 5 Bg2 d6 6 0-0 Nbd7 7 Nc3 e5  
 8 Qc2 c6 9 Rd1 Qe7 10 b3 exd4 11  
 Nxd4 Re8 12 Bb2 Nc5 13 e3 a5 14  
 a3 h5 15 b4 Nce4 16 b5 Bd7 17 Rac1  
 h4 18 a4 hxg3 19 hxg3



19...Nxf2! 20 Qxf2 Ng4 21 Qf3 Nxe3  
 22 Re1 Bxd4 23 Nd5 Ng4+ 24 Bxd4  
 Qxe1+ 25 Rxe1 Rxe1+ 26 Bf1 cxd5 27  
 Qxd5 Rae8 28 Bf2 Be6 29 Qxb7 Rc1  
 30 Qc6 Rc8 31 Qe4 R8xc4 32 Qa8+  
 Kh7 33 b6 Rb4 34 Qxa5 Rbb1 35 Kg2  
 Rc2, 0 - 1.

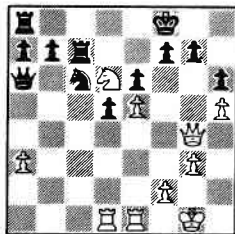
BAREEV - KASPAROV, King's Indian:  
 1 d4 Nf6 2 c4 g6 3 Nc3 Bg7 4 e4 d6  
 5 Be2 0-0 6 Nf3 e5 7 d5 a5 8 Be3  
 Ng4 9 Bg5 f6 10 Bh4 Na6 11 Nd2 h5  
 12 a3 Bd7 13 h3 Nh6 14 Rb1 Nc5 15  
 b4 axb4 16 axb4 Na4 17 Qc2 Nxc3 18  
 Qxc3 g5 19 Bg3 h4 20 Bh2 f5 21 c5  
 g4 22 c6 Bc8 23 hxg4 fxg4 24 cxb7  
 Bxb7 25 0-0 Qg5 26 Ra1 Rxa1 27  
 Rxa1 Bxd5 28 Ra7 Be6 29 Rxc7 Qf6  
 30 Qe3 Nf7 31 Bc4 Bh6 32 Qe2 Bxd2  
 33 Bxe6 Qxe6 34 Qxd2 Qb3 35 Kh1  
 Qb1+ 36 Bg1 Qxe4 37 Qc2 Qxc2 38  
 Rxc2 d5 39 b5 d4 40 f3 g3 41 b6  
 Rd8 42 Rc6 Nd6 43 Rc7 Rb8 44 Rc6  
 Nf5 45 Re6 Ne3, 0 - 1.

ANAND - KASPAROV, Sicilian:  
 1 e4 c5 2 Nf3 d6 3 d4 cxd4 4 Nxd4  
 Nf6 5 Nc3 a6 6 f4 e6 7 Bd3 Nbd7 8

0-0 Qb6 9 Be3 Qxb2 10 Ndb5 axb5 11  
 Nxb5 Ra5 12 Rb1 Rxb5 13 Rxb2 Rxb2  
 14 Qa1 Rb6 15 Bxb6 Nxb6 16 Qc3 Be7  
 17 Rb1 Nfd7 18 Qxg7 Bf6 19 Qh6 Ke7  
 20 Bb5 Rg8 21 Rd1 e5 22 f5 Nc5 23  
 Rxd6 Bg5 24 Qxh7 Mxe4 25 Rxb6 Rd8  
 26 Bd3 Be3+ 27 Kf1 Bxb6 28 Bxe4  
 Rd4 29 c3, 1 - 0.

SHORT - TIMMAN, Alekhine:  
 1 e4 Nf6 2 e5 Nd5 3 d4 d6 4 Nf3 g6  
 5 Bc4 Nb6 6 Bb3 Bg7 7 Qe2 Nc6 8  
 0-0 0-0 9 h3 a5 10 a4 dxe5 11 dxe5  
 Nd4 12 Nxd4 Qxd4 13 Re1 e6 14 Nd2  
 Nd5 15 Nf3 Qc5 16 Qe4 Qb4 17 Bc4  
 Nb6 18 b3 Nxc4 19 bxc4 Re8 20 Rd1  
 Qc5 21 Qh4 b6 22 Be3 Qc6 23 Bh6  
 Bh8 24 Rd8 Bb7 25 Rad1 Bg7 26 R8d7  
 Rf8 27 Bxg7 Kxg7 28 R1d4 Rae8 29  
 Qf6+ Kg8 30 h4 h5 31 Kh2 Rc8 32  
 Kg3 Rce8 33 Kf4 Bc8 34 Kg5, 1 - 0.  
 What a king!

SHORT - BAREEV, French:  
 1 e4 e6 2 d4 d5 3 e5 c5 4 Nf3 cxd4  
 5 Bd3 Ne7 6 0-0 Ng6 7 Re1 Nc6 8 a3  
 Bd7 9 b4 Qc7 10 Qe2 Be7 11 b5 Na5  
 12 Bg5 Nc4 13 Bxe7 Kxe7 14 g3 Bxb5  
 15 h4 Rhc8 16 Nbd2 Nxd2 17 Qxd2  
 Bxd3 18 cxd3 Qc3 19 Qg5+ Kf8 20 h5  
 h6 21 Qg4 Ne7 22 Nxd4 Nc6 23 Nb5  
 Qxd3 24 Nd6 Rc7 25 Rad1 Qa6



26 Rxd5! Rd8 27 Rdd1 Nxe5 28 Nf5!,  
 1 - 0.

**LOCAL NEWS cont**

by Dan Fosse (2 mins, five wins), Havelock North junior Cathy Smith and senior Robert Craig four wins each.

Trophy winners for 1991 were: senior champion, **Tony Boswell**; B grade, Selvyn Severinsen; C grade, Stephen Gaukrodger; junior champion, Ross Jennings; club junior representative, Paul Pay. A special cup, given by the club patron, Selvyn Severinsen, was presented to Mark Lancaster in recognition of his having won the club championship each year from 1985 to 1990.

**NORTH SHORE**

*With his usual efficiency and thoroughness, Peter Stuart provided an excellent report on the North Shore club championship. He bills it as one of the strongest events in New Zealand in recent years. However, our information is that some players said they would not compete if the games were rated. To our mind, that makes them (the games) friendlies!*

*Going by the results, Roger Nokes and Paul Garbett could have had another 15 to 20 points added to their ratings but the real losers, of course, are the young players. Darryn Elliott could have had an extra 50 or so points. This is enough to put him over 2000, possibly his immediate goal. Ralph Hart, too, missed out on a similar-sized lift.*

With eight national representatives in a field of 12, this year's club championship was among the strongest tournaments in New Zealand in recent years. Roger Nokes and Paul Garbett played the best chess and by a considerable margin. Others appeared to make things easy for them - though neither is known to need much encouragement.

The event had a fitting climax when Garbett and Nokes met in the final round. Paul enjoyed a half-point advantage which is not an enviable situation really; in fact he confided to me after his penultimate game against Barlow that he was considering offering Matthew a draw (with the obvious temptation for both players in the last round of a quick draw and shared title). Barlow, however, gave Paul the chance of a brilliant finish which he couldn't pass up.

In the last round Nokes got what he wanted - opposite side castling - and after a pawn-munching spree, Nokes reached an ending with two extra pawns, thus retaining the title he first won in 1990.

There was very little between the next five though Ralph Hart was the most impressive, apart from three horrible blunders. Darryn Elliott was less consistent but his fine concentration and equanimity saw him to a good result. Ortvin Sarapu had what was perhaps his worst tournament since arriving in New Zealand, making uncharacteristic blunders in some

**LOCAL NEWS cont**

games. Of course, Ortvin's play recently has been mainly against

computers rather than humans and I suspect that many of his openings in this event were designed for play against computers instead.

|    |              | 1 | 2 | 3 | 4 | 5 | 6 | 7 | 8 | 9 | 10 | 11 | 12 |
|----|--------------|---|---|---|---|---|---|---|---|---|----|----|----|
| 1  | Nokes R.I.   | x | 1 | ½ | 1 | 1 | 1 | 1 | ½ | 1 | 1  | 1  | 10 |
| 2  | Garbett P.A. | 0 | x | 1 | 1 | 1 | 1 | ½ | 1 | 1 | 1  | 1  | 9½ |
| 3  | Elliott D.B. | ½ | 0 | x | 1 | ½ | 1 | 1 | ½ | ½ | ½  | 1  | 7  |
| 4  | Hart R.      | 0 | 0 | 0 | x | 1 | ½ | 1 | 1 | 1 | ½  | 1  | 7  |
| 5  | Barlow M.J.  | 0 | 0 | ½ | 0 | x | ½ | ½ | ½ | 1 | 1  | 1  | 6  |
| 6  | Sarapu O.    | 0 | 0 | 0 | ½ | ½ | x | ½ | 1 | ½ | 1  | 1  | 6  |
| 7  | Stuart P.W.  | 0 | ½ | 0 | 0 | ½ | ½ | x | 1 | 1 | 0  | 1  | 5½ |
| 8  | Green E.M.   | ½ | 0 | ½ | 0 | ½ | 0 | 0 | x | 0 | 1  | 1  | 4½ |
| 9  | Weir P.B.    | 0 | 0 | ½ | 0 | 0 | ½ | 0 | 1 | x | ½  | 1  | 4½ |
| 10 | Ion G.J.     | 0 | 0 | ½ | ½ | 0 | 0 | 0 | ½ | x | ½  | ½  | 2½ |
| 11 | Leonhardt W. | 0 | 0 | 0 | 0 | 0 | 0 | 1 | 0 | 0 | ½  | x  | 1  |
| 12 | Pitts G.L.   | 0 | 0 | ½ | 0 | 0 | 0 | 0 | 0 | ½ | 0  | x  | 1  |

**P A Garbett v R Nokes**

1 e4 c5 2 Nf3 d6 3 d4 cxd4 4 Nxd4 Nf6 5 Nc3 Nc6 6 Bg5 e6 7 Qd2 Be7 8 0-0-0 0-0 9 Nb3 a5 10 a4 d5 11 Bb5 Nb4 12 Rhe1 Bd7 13 Bxd7 Qxd7 14 exd5 exd5 15 Re3 Rac8 16 f3 h6 17 Bh4 Rc4 18 Qe2 Rxh4 19 Rxe7 Qd6 20 Nxa5 Rxh2 21 Nxb7 Qg3 22 Qb5 Qxg2 23 Ne2 Qxf3 24 Re1 Ne4 25 Qxb4 Rxe2 26 Kb1 Rc8 27 Rc1 Rexc2 28 Rxc2 Qd1+ 29 Ka2 Qxc2 30 Na5 Nc5 31 Nb3 Nxb3 32 Qxb3 Qc6 33 a5 Qc5 34 Qa3 Qc4+ 35 Qb3 Qc5 36 Qa3 Qc4+ 37 Qb3 Ra8 38 Qxc4 Rxa5+ 39 Kb3 dxc4 40 Kxc4 Ra1 41 b4 Rb1 42 b5 h5 43 Kc5 h4 44 b6 g5 45 b7 Kg7 46 Kc6 h3 47 Re1 Rb2 48 Re2 Rb3 49 Kc7 g4 50 Rh2 Kg6 0-1.

**P A Garbett v M J Barlow**

1 e4 c5 2 Nf3 e6 3 d4 cxd4 4 Nxd4 a6 5 Bd3 Qc7 6 0-0 Nf6 7 Qe2 d6 8 Kh1 Be7 9 f4 Nbd7 10 c4 0-0 11 b3 b6 12 Bb2 Bb7 13 Nd2 Rfe8 14 e5 dxe5 15 Nxe6 Qc6 16 Nxe7 Kxe7 17 fxe5 Ng8 18 Be4 Qc7 19 Qg4+ Kf8 20 Rxf7+ Kxf7 21 e6+ 1-0.

**G L Pitts v O Sarapu**

1 d4 Nf6 2 c4 c5 3 d5 g6 4 Nc3 d6 5 Nf3 Bg7 6 e3 0-0 7 Bd3 e6 8 0-0 exd5 9 Nxd5 Nc6 10 Rb1 Nxd5 11 cxd5 Nb4 12 a3 Nxd3 13 Qxd3 Re8 14 Re1 Qc7 15 b3 b5 16 Nd2 Ba6 17 Bb2 c4 18 Rec1 Rac8 19 bxc4 bxc4 20 Qe2 Bxb2 21 Rxb2 c3 22 Qxa6 cxb2 23 Rxc7 Rxc7 24 Kf1 Rc2 25 Ke1 Rxd2 26 Qb5 Rc2 27 Qxe8 and 0-1.

**G L Pitts v R Hart**

1 d4 Nf6 2 c4 e6 3 Nc3 Bb4 4 Qc2 0-0 5 Nf3 c5 6 e3 d5 7 Bd3 dxc4 8 Bxc4 a6 9 a4 Nc6 10 dxc5 Qe7 11 0-0 e5 12 Ne4 Bg4 13 Nfg5 Nxe4 14 Nxe4 Na5 15 b3 Rac8 16 Ba3 Bxa3 17 Rxa3 Nxc4 18 Qxc4 Be6 19 Qb4 Rc6 20 Qa5 Bd5 21 Nc3 Bxg2 22 Kxg2 Qg5+ 23 Kf3 Qh5+ 24 Ke4 Qg6+ 25 Kf3 Rf6+ 26 Ke2 Qc2+ 27 Ke1 Qc1+ 28 Ke2 Qxa3 29 Nd5 Qb2+ 30 Ke1 Re6 31 b4 e4 32 b5 Qc1+ 33 Ke2 Qc4+ 0-1.

**P B Weir v W Leonhardt**

1 e4 c6 2 d4 d5 3 e5 Bf5 4 Nf3 e6 5 Be2 Qb6 6 0-0 c5 7 Nc3 cxd4 8 Nxd4 Bg6 9 Be3 a6 10 Qd2 Qc7 11 f4 Ne7 12 g4 Be4 13 Ncb5 axb5 14 Nxb5 Qa5 15 b4 Qd8 16 Nd6+ Kd7 17 Nxe4 Nec6 18 b5 Na5 19 f5 Ke8 20 fxe6 fxe6 21 Ng5 Qc8 22 Rf4 Be7 23 Ra4 Nc4 24 Rxc4 dxc4 25 Ne4 Ra3 26 c3 Rf8 27 Nd6+ Bxd6 28 Qxd6 Rxc3 29 Bc5 Rf7 30 Rf1 Qc7 31 Qxe6+ 1-0.

David Evans was a convincing winner of the B grade, scoring 10.5/12 while Alexis Shead took second place on 8.5 and showed a further advance in playing strength. Then came J S Mathieson 8; J M Cockcroft, R B Johnstone 7.5; D B Langley, G W Mears 7 ... 13 players.

The C grade went to Peter van

der Mey whose 8/10 gave him a half-point margin over schoolboy Daniel Johns. Brian Winsor was third on seven points.

**CHRISTCHURCH**

Ted Frost sent us this game and the final result of the national schoolpupils. **Shamnika Rupasinghe** won the event with 6/7, Matthew Vincent 5.5, Mark Sinclair 5 and Thimos Mastorakis 4.5.

Vincent, who beat Rupasinghe, was leading going into the penultimate round when he met Thimos Mastorakis. Ted says Ortvin Sarapu regarded this game as the best of the event.

**M Vincent v T Mastorakis**

1 e4 e5 2 Nf3 Nc6 3 Bc4 Nf6 4 Ng5 d5 5 exd5 Na5 6 Bb5+ c6 7 dxc6 bxc6 8 Be2 h6 9 Nf3 e4 10 Ne5 Bc5 11 c3 Bd6 12 d4 exd3 13 Nxd3 Qc7 14 Nd2 0-0 15 g3 Bh3 16 b4 Nb7 17 Nc4 Rfe8 18 Nxd6 Nxd6 19 Nf4 Bf5 20 0-0 Rad8 21 Qb3 g5 22 Nh5 Nxb5 23 Bxb5 Bh3 24 Rd1 Qe7 25 Be3 Qe4 26 f3 Qxe3+ 27 Kh1 Qf2 28 Rg1 Re2 0-1.

18th November: Federation secretary Tim Frost announced the players who have qualified to play in the 1991-92 Championship in Dunedin. They are, in rating order:

**Ben Martin, Anthony Ker, Richard Sutton, Paul Garbett, Russell Dive, Bob Smith, Jonathan Sarfati, Martin Dreyer, Graeme Spain, Peter Stuart, Tony Love, Nigel Metge.**

Continued p 147

**NORTH SHORE OPEN**

**By Peter Stuart**

The weekend of 14/15 September saw a continuation of the **Russell Dive** love affair with this tournament when the Wellingtonian won a more or less uncontested first place. For one thing, several of his opponents were rather prodigal with their pieces and also his two most likely rivals, Roger Nokes and Paul Garbett, both lost in round 2. All in all, the easiest \$400 Russell has "earned" in a long time.

Ralph Hart, a sleeping talent for so long was easily the most impressive of the trio tying for second, nobbling Nokes in round 2 and rubbing salt into Garbett's wounds in the last round with active defence.

Graeme Spain had the clock to thank for his success, winning on time in a probably lost position against Leonhardt and saving a half point when Stuart ran too short of time to pursue the aim. Nigel Metge was more convincing but benefited from a much easier draw.

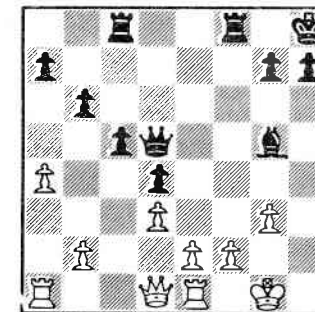
Either of the two Peters could have joined the second place tie when they met in the last round after solid performances. Stuart was almost ready to resign at one point but Green failed to find the coup de grace and the former then gained enough counterplay to draw.

Garbett and Nokes will obviously want to forget this tournament in a hurry. Nokes blundered the exchange twice while Garbett's blunder against Nigel Metge was even more horrifying.

Third seed Geoffrey Gill made a clean sweep of his five games in the B grade while Neville Easterlow, seeded 16th, did almost as well in scoring 4.5 points. Nine players shared third place on 3.5; J Bojtor, J Broughton, T Fernando, R B Johnstone, G W Mears, M K Morrison, D Morrow, C J Stott and G E Sullivan.

**G Ion v R Dive**

1 c4 Nf6 2 Nc3 c5 3 g3 d5 4 cxd5 Nxd5 5 Bg2 Nc7 6 Nf3 Nc6 7 0-0 e5 8 d3 Be7 9 Be3 0-0 10 Rc1 Bd7 11 Nd2 Rc8 12 Re1 b6 13 a3 Kh8 14 Nd5 Nxd5 15 Bxd5 f5 16 Nc4 Qc7 17 a4 Bf6 18 Qb3 f4 19 Bd2 Nd4 20 Qd1 Bc6 21 Bxc6 Qxc6 22 Bc3 Qd5 23 Bxd4 exd4 24 Nd2 fxc3 25 hxg3 Bg5 26 Ra1 See diagram  
26...Rxf2 27 Ne4 Rf5 28 Rf1 Be3+ 29 Kg2 Rcf8 30 Rf3 g5 31 Qh1 g4 32 Rxf5 Rxf5 33 Rf1 Rh5 34 Rf8+ Kg7 35 Qf1 Rh2+ 0-1.



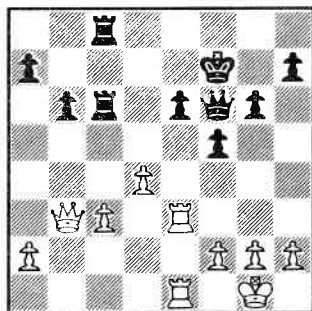
a b c d e f g h

### P Garbett v R Hart

1 e4 c6 2 c4 d5 3 exd5 cxd5 4 cxd5 Nf6 5 Nc3 Nxd5 6 Bc4 e6 7 Nf3 Nc6 8 0-0 Be7 9 d4 0-0 10 Re1 Nxc3 11 bxc3 b6 12 Qd3 Na5 13 Bb5 Bd7 14 Bxd7 Qxd7 15 Ne5 Qa4 16 Re3 Rac8 17 Rh3 g6 18 Bh6 Rfd8 19 Rf3 f5 20 Qe2 Qe8 21 Ng4 Rc6 22 Ne5 Rc7 23 Re1 Bf8 24 Ng4 Qe7 25 Bxf8 Rxf8 26 Ne5 Rfc8 27 Rg3 Qf6 28 Qb5 Nb7 29 Rf3 Nd6 30 Qb4 Nc4 31 Nxc4 Rxc4 32 Qb3 R4c6 33 Rfe3 Kf7

See diagram

34 d5 Rxc3 35 dxe6+ Kg7 36 Rxc3 Rxc3 37 Qd5 (37 e7 Rc8) Rc7 38 g3 Qc3 39 Re3 Qf6 40 h3 Re7 41 Re5 h5 42 h4 Rc7 43 Kg2 f4 44 Qd6 f3+ 45 Kh2 Rc2 46 Kh3 Rc1 47 Kh2 Rc2 48 Qd4 Re2 49 Qd7+ Kg8 50 Qc8+ Kg7 (50...Qf8 also wins) 51 Qc7+ Kg8, 0-1. White lost on time. The likely looking try 52 Rd5 loses to 52...Rxf2+ 53 Kh3 Rh2+ 54 Kxh2 Qb2+ and 55...Qg2#



### G Spain v P Stuart

1 e4 c5 2 d4 cxd4 3 c3 dxc3 4 Nxc3 Nc6 5 Nf3 d6 6 Bc4 e6 7 0-0 Be7 8 Qe2 a6 9 Rd1 b5 10 Bb3 Ra7 11 Be3 Rd7 12 Nxb5!? Hilton Bennett's suggestion after the game Spain-Smith, New Plymouth 1991, in which Black nursed his extra pawn through to the ending. 12...axb5 13 Qxb5 Bb7 14 Ba4! A distinct improvement on Spain-Stuart, ibid, which continued 14 Rac1 Nf6 15 Rxc6 Bxc6 16 Qxc6 0-0 and Black again won the ending. Later Graeme told me of Ba4 but I thought he meant after 14 Rac1 Nf6 when I didn't consider it to be dangerous. The text is a different matter. 14...Nf6 15 Nd4 Nxd4 16 Qxb7 Nc2! White thought he was winning by force but this was unexpected. 17 Bb6 0-0 18 Bxd7 Both 18 Qc6 and 18 Bxd8 come into consideration too. 18...Qxd7 19 Qxd7 Nxd7 20 Rac1 Nxb6 21 Rxc2 d5 22 exd5 Nxd5 23 a3 Ra8 24 Rdc1 Ra7 Black needs the rook for possible counterplay and to restrain the pawns. 25 Rc8+ Bf8 26 Rb8 Ne7 27 g3 g5 28 Rc5 h6 29 Rcb5 Kg7 30 h3 Nd5 31 R5b7 Ra4 32 Re8 Ra6 33 Rd8 Nf6 34 Rbb8 Bc5 35 Ra8 Rb6 36 Rdb8 Better was 36 b4 36...Rd6 37 b4? Now Black gets a strong attack. Correct was 37 Rd8 Rb6 38 b4 and White is better. 37...Rd1+ 38 Kg2 Bd4 39 f4 Rd2+ 40 Kf1 Ne4 41 Rg8+ Kf6 42 fxg5+ hxg5 43 Rgd8 e5 44 b5 Nc3 45 Rac8 Rf2+ 46 Ke1 Rb2 Black used most of his last 15 minutes looking for a quick mate - without success. 47 Rc6+ Kf5 48 Rdc8 Re2+ 49 Kf1 Rf2+ 50 Ke1 Re2+ =

|    |                 | R.1 | R.2 | R.3 | R.4 | R.5 | T'1 |    |
|----|-----------------|-----|-----|-----|-----|-----|-----|----|
| 1  | Dive R.J.       | CI  | +16 | +9  | +2  | +5  | =3  | 4½ |
| 2  | Hart R.         | NS  | +23 | +8  | -1  | +11 | +7  | 4  |
| 3  | Spain G.A.      | TE  | +21 | +22 | =6  | +8  | =1  | 4  |
| 4  | Metge J.N.      | AC  | +18 | +7  | -5  | +17 | +10 | 4  |
| 5  | Green P.R.      | AC  | +20 | +12 | +4  | -1  | =6  | 3½ |
| 6  | Stuart P.W.     | NS  | =10 | +19 | =3  | +16 | =5  | 3½ |
| 7  | Garbett P.A.    | NS  | +17 | -4  | +13 | +9  | -2  | 3  |
| 8  | Nokes R.I.      | NS  | +13 | -2  | +11 | -3  | +16 | 3  |
| 9  | Ion G.J.        | NS  | +24 | -1  | +20 | -7  | +17 | 3  |
| 10 | Lam D.K.W.      | AC  | =6  | -11 | +19 | +14 | -4  | 2½ |
| 11 | Freeman M.R.    | NP  | =19 | +10 | -8  | -2  | +18 | 2½ |
| 12 | Weir P.B.       | NS  | +14 | -5  | -16 | +23 | =13 | 2½ |
| 13 | Sidnam G.       | NS  | -8  | +23 | -7  | +20 | =12 | 2½ |
| 14 | Reynolds C.P.   | NS  | -12 | =20 | +21 | -10 | +22 | 2½ |
| 15 | Emett B.G.      | NS  | -22 | =21 | -18 | +24 | +19 | 2½ |
| 16 | Tuffery P.B.    | NP  | -1  | +24 | +12 | -6  | -8  | 2  |
| 17 | Whitehouse L.E. | HA  | -7  | +18 | +22 | -4  | -9  | 2  |
| 18 | Shead A.T.      | NS  | -4  | -17 | +15 | +22 | -11 | 2  |
| 19 | Storey D.J.H.   | PT  | =11 | -6  | -10 | +21 | -15 | 1½ |
| 20 | Metge K.M.      | PT  | -5  | =14 | -9  | -13 | +23 | 1½ |
| 21 | Rossiter P.E.   | HA  | -3  | =15 | -14 | -19 | +24 | 1½ |
| 22 | Leonhardt W.    | NS  | +15 | -3  | -17 | -18 | -14 | 1  |
| 23 | Hair P.I.       | NS  | -2  | -13 | +24 | -12 | -20 | 1  |
| 24 | Vincent D.A.    | AC  | -9  | -16 | -23 | -15 | -21 | 0  |

Greg Spencer-Smith did not qualify under rule 114. Tony Dowden is emergency.

Qualifiers for the Reserve were:

**G J Spencer-Smith, R A Dowden, C Ker, G G Haase, K M Boyd, P B Tuffery, P Abrahamson, J L Sutherland, M B Vincent, M J Post, D J H Storey.**

We make that 11, so there is room for one more as of 18/11/91.

At least two regular items are missing from this issue, the Study Corner and Chess By Corry. With just a fortnight to go to press

time, we had very little copy in hand then a deluge. It could have been bad planning but the work done previously made it difficult to increase the number of pages and we settled for what you see now.

We apologise to the contributors who missed out. It wasn't their fault!

For her swansong, Womens editor, Vivian Smith sent in two pages of material. Can anyone (preferably a woman) help fill the gap? We cannot give a lot of help but will pass on anything received by the federation on the subject,

## From Inside Front cover

One recommendation, that we adopt FIDE swiss pairing rules, was discarded. It was said that our rules were better, with the possible exception of reverse pairing. This exception is not agreed upon by everybody but most Wellington events this year have used all direct pairings.

Ted Frost also got details of the overseas junior events where New Zealanders participated. In the editor's chair there is disappointment. The federation assisted them to the tune of \$1800 but didn't get the courtesy of a report.. At least, we haven't seen any.

The ranking list that appeared (on the wrong page?!) last issue caused some reaction. Don't worry. Despite the fact that some think it is a good idea, it will not be used to pick championship or olympiad contenders! Just players and part-timers.

## CLUB DIRECTORY cont

**NELSON CC** meets Thursdays 7.30pm at 2 Shakespeare Walk. Contact, Dan Dolejs, 89-827 or Denis Boyce, Motueka 87-985. Visitors welcome.

**CANTERBURY CC** meets Wednesdays 7.00pm, 227 Bealey Avenue, Christchurch. Phone 663-936 (clubrooms). Contact, Brian Nijman, phone 348-0576.

**ASHBURTON CC** meets Mondays 7.30pm (Feb-Oct inclusive), Room R5, Ashburton College, Walnut Avenue. Contact, Roy Keeling 86-936 or Stephen Taylor 85-761. Postal address: PO Box 204, Ashburton.

**OTAGO CC** meets Wednesdays and Saturdays 7.30pm at 7 Maitland Street, Dunedin. Phone 477-6919 (clubrooms). Pres, David Reid, 12 Marquis Street, Dunedin, phone 473-7652.

**INVERCARGILL CC** meets Tuesdays 7.30pm at Staff Room, South School, Ness Street. Contact, Robert Mackway Jones, phone 64-747 or Allan McCall, phone 82-204

**NEW ZEALAND CORRESPONDENCE CHESS ASSOCIATION**, PO Box 3278, Wellington. Local and overseas play. Contact, J W (Sandy) Maxwell, phone 236-7682

Election time at the AGM should not produce many surprises. The same field has been proposed, with one exception. Russell Dive, after doing a massive tidy-up job on the accounts, is stepping down due to work and study pressures. He also saw us into the realms of GST. Accordingly, the federation is looking for a replacement (before we went to press). If anyone out there has the necessary skills and can devote a little time to the accounts, please get in touch with PO Box 3130.

Affiliation of small (unincorporated) and school clubs is still a problem. The editor, concerned that we may lose contact with some players, intends to make a proposal to next council meeting.

The abbreviation of some entries in the club directory is deliberate and allied to the proposal. If anyone else has ideas to keep us all in touch, let us know.

## CLUB DIRECTORY

**AUCKLAND CHESS ASSOCIATION**, contact: Secretary, Martin Dreyer, 142b Upland Rd, Remuera, phone 522-2781.

**AUCKLAND CHESS CENTRE** meets Mondays 7.15pm at 17 Cromwell Street, Mt Eden, Phone 602-042 (clubrooms). Contact: Martin Dreyer, 142b Upland Road, Remuera, Phone 522-2781.

**DEVONPORT CC** meets Tuesdays 7.30pm, Methodist Church Hall, Owens Road, Devonport. Contacts: Philip Hair, phone 458-673; David Shead, phone 456-175. Postal address: 18 Grove Road, Devonport.

**HOWICK-PAKURANGA CC** meets Tuesdays 7.30pm, Howick Bridge Club, Howick Community Complex. Contact, Derrick Lark, 39 Minaret Drive, Bucklands Beach. Phone 534-1114

**NORTH SHORE CC** meets Wednesdays 7.30pm in the Northcote Community Centre, cnr College Road/Ernie Mays Street, Northcote. Postal address: PO Box 33-587, Takapuna. Contact, Peter Stuart, phone 4456-377.

**PAPATOETOE CC** meets Wednesdays 7pm, St George's Anglican Hall, Landscape Rd, Papatoetoe. Contact, G Banks, 534-7951 evenings.

**WAITEMATA CC** meets Thursdays 7.30pm, Kelson West Community Centre, cnr Great North/Awaroa Rds. Address: 2 Autumn Ave, Glen Eden. Contacts, Bob Smith, phone 818-4113; Steve Lawson, phone 818-6137.

**HAMILTON CC** meets Thursdays 7pm at Hamilton Bowling Club, Pembroke Street, Hamilton. Contact, Len Whitehouse, 165 Galloway Street, Hamilton, phone 69-582.

**TE AWAMUTU CC** meets Wednesdays 7.30pm at Federated Farmers Building, Carlton Street. Contacts: Roman Novak (0871) 6165 (home) 4536 (bus); Mark Gulliver 7825.

**ROTORUA CC** meets Thursdays 7.30pm in the Salvation Army Hall, Old Taupo Road, Rotorua. Secretary: Percy Margolin, 64 Turner Drive, Rotorua Phone Rotorua 83-415.

**NEW PLYMOUTH CC** meets Tuesdays 7.30pm at clubrooms, 11 Gilbert Street, New Plymouth. Contact, President, R P Bowler, 251 Coronation Ave, phone 80-797 New Plymouth.

**BAY OF PLENTY CC** meets Hillier Centre, Gloucester Rd, Mt Maunganui, Thursdays 7pm and Mt Maunganui Public Library, 10am on Saturdays. Contact, Barney Sullivan phone 575-6793.

**TAUPO CC** meets Mondays 7.30pm at "Lakewood", 5a Fletcher Street, Taupo. Contact, Joanne Rae, phone 83-285

**NAPIER CC** meets Mondays in the library, Colenso High School, Arnold Street, Onekawa, Napier. Secretary: Maurice Berry, 21 Clyde Road, Napier, phone 835-8339.

**HASTINGS/HAVELOCK NORTH CC** meets Wednesdays 7pm at the Library, Havelock North High School, Te Mata Road, Havelock North. Contact, Mike Earle, phone 776-027.

**PALMERSTON NORTH CC** meets Tuesdays 7.30pm, Intermediate School, Ferguson Street. Contacts, John Chapman, phone 358-0337; Mark Brimble, phone 358-3648.

**KAPITI CC** meets Thursdays 7.30pm at Block E, Kapiti College, Margaret's Road, Raumati Beach. Contact, Glenys Mills (Sec), 179 Te Moana Road, Waikanae. 293-4991.

**UPPER HUTT CC** meets Mondays 7.30pm at Fraser Crescent School Hall, Redwood Street, Upper Hutt. Contact, Anton Reid, 16 Hildreth Street, Upper Hutt, phone 528-8756.

**HUTT VALLEY CC** meets Tuesdays 8pm at Hutt Valley Intermediate School, south end, entrance off Kauri Street. Contact, Bob Teece, phone 563-8234.

**HARBOUR CITY CC** meets Wednesdays 7.30pm, Central Bowling Club, Petone... Contacts: Peter Collins 564-6764; Gavin Marnar, 564-8401. Address, 54 Kowhai Street, Wainuiomata.

**CIVIC CC** meets Tuesdays, 7.30pm at Turnbull House, Bowen Street, Wellington. Contact, Russell Dive, 14 Burmton Street, Lower Hutt, phone 566-6090.

**WELLINGTON CC** meets Saturdays from 6pm, Turnbull House Bowen Street. Contacts: Tim Frost, 476-3541; E G A Frost, 476-4098. Postal address: 17 Croydon Street, Karori.