

INTRODUCING

PC-SCOREBOOK

...the Ultimate PC Game Processor



For all IBM and Compatibles:

Requires 256K & Color Graphics & DOS 2.1 or higher

- 1) Chess game files include information on tournament, opponent and opening variations
- 2) Can be used for postal or OTB games
- 3) Allows comments on each half move
- 4) Uses Algebraic or International notation
- 5) Replays game with review of analysis
- 6) Is a useful study aid
- 7) Not copy protected — Owner's name is included in source code
- 8) Prints graphic display through DOS's graphics program
- 9) Works on hard disk or floppy systems
- 10) Kasparov-Karpov game files included on program disk - specify 5¼" or 3½"

G & W Micro-Specialties, Inc.

P. O. Box 1051

Bamberg, S. C. 29003 U.S.A.

\$34⁹⁵

S.C. Resident add 5% sales tax
Check or Money Order

(Orders outside U.S. add \$5.00 Shipping & Handling — U.S. Currency only)

NEW ZEALAND CHESS



Registered at Post Office HQ, Wellington as a magazine

\$2.00

VOL. 14, No 6

DECEMBER 1988



FIDE President Florencio Campomanes,
Gillian West of Christchurch and
NZCA Vice-President Gordon Chamley

NEW ZEALAND CHESS is published bi-monthly (February, April, June, August, October and December) by the New Zealand Chess Association.

Unless otherwise stated, however, the views expressed herein are not necessarily those of the Association.

ADDRESSES

All articles and letters should be addressed to The Editor, 25 Jeep Road, Raumati South.

Correspondence to the Association should be addressed to The Secretary, NZCA, PO Box 2185, Wellington.

Subscriptions, changes of address and advertising enquiries should be addressed to The Secretary.

SUBSCRIPTION RATES

Rates are for one year's subscription. Overseas rates are in US Dollars:

Surface mail
New Zealand \$NZ12.00
Other countries \$US15.00

Airmail
Australia & South Pacific \$US15.00
Other Countries \$US20.00

ADVERTISING RATES

Full page \$NZ40.00
Half page or full column \$NZ20.00
Half column \$NZ10.00

Club directory listing - \$6 per annum, \$2 per alteration.

DEADLINE FOR COPY
Editorial copy should be in the editor's hands by the second Saturday of the month preceding publication.

PAUL COOPER finished joint 27-37 in the Bicentennial World Junior Tournament held in Adelaide in September-October with a score of +3 -4 =6 for a score of 6/13.

The winner of the tournament was Joel Lautier (FRA) 2365 with 9/13 on a countback. Vassily Ivanchuk (URS) 9/13 was second; Grigory Serper (URS) 9/13 3rd; and Boris Gelfand (URS) 9/13 4th.

The World Girls Final rankings were Alisa Galliamove (URS) 1st with 10.5/13; Ketevan Arakhamia (URS), Elena Zayatsd (URS) and Jun Xie (PRC) equal 2-4 with 9.5/13.

Paul Cooper's report will appear in the next issue.

ENTRIES FOR THE NEW ZEALAND CHAMPIONSHIP 1988-89 ARE: Paul GARBETT; Peter GREEN; Michael HAMPL; Peter HAWKES; Anthony KER; Stephen LUKEY; Ben MARTIN; Leonard McLAREM; Robert SMITH; Peter STUART; Graeme SPAIN; Robert WANSINK.

WOMEN'S CHAMPIONSHIP: CANCELLED - two entries only.

NEW ZEALAND's mens and womens teams had a good result at the Olympiad - and finished ahead of the powerful Australian teams in both events!

The men's team finished 38th out of 117 teams competing. They were seeded 44th, but scored 30 points. Australian men were 40th with 29.5 points.

The NZ Women's team were 31st out of 56 teams, scoring 21.5 points. Australia were 33rd.

NEW ZEALAND CHESS

Editor: Bill Cox

Overseas News: NM Peter Stuart

Women's Editor: Vivian Smith

Special Correspondents: IM Ortvin Sarapu; NM Ewen Green; Emil Melnichenko.

EDITORIAL

THIS issue of New Zealand Chess completes 14 years of continuous publication. The magazine has had its ups and downs since the first number went out to members of the association in 1974 - a roneod set of sheets, I gather, until issue number six, which was professionally printed.

The fifth issue went out to 800 subscribers, the then Editor, P B Goffin, noted. This issue will go to around 520 subscribers, a sad reflection on the keenness of New Zealand's chess players who number, according to Association records, at least 1800.

Issue number six cost 40 cents, this one is \$2, which does not reflect the increase in salaries

or the cost of living.

This does not mean that the cover price is going to increase. During the past couple of years subscriptions have increased from just over 400 to the present figure, which makes it barely viable.

In fact, the magazine managed to make a profit in the last financial year, but that was due to Ab Borren, who refused to let it die and who managed means to produce it at minimal cost.

Subscription renewals will go out with this issue. Please renew your order - and persuade a chess playing friend to subscribe.

A merry Christmas - and Good Chess in '89!

BILL COX

ASSOCIATION NEWS

AT THE time of writing most council members are overseas. Our Rating Officer Rowan Wood has left New Zealand for an extended overseas working holiday. During the last three years or so Rowan has done a tremendous job. The preparation of rating lists is certainly not the most glamorous side of Council work, but everyone takes notice of the results and the Rating Officer is often unjustifiably criticised. Rowan has cheerfully done the job and hopefully he will return as Council member in 18 months time.

In Thessaloniki at the Chess Olympiad, our President Bill Poole, together with Gordon Chamley and Bill Ramsay are lobbying for the 1990 World

Championship final. They are supported by Sir Ronald Scott, Chairman of the Hillary Commission. We are looking forward to hearing from them before Christmas.

It will require an enormous effort to prepare a bid for such an event, let alone the organisation of the final. Progress reports will appear in NZC.

Lev Aptekar is also in Greece as coach of the New Zealand teams.

The Annual General Meeting of the NZCA will be held in Dunedin on Wednesday, January 4 at 8 pm. Make sure that your club sends a delegate.

Roel von't Steen

RATINGS

EVENTS rated in the period May 1 to October 31 are: NZ Junior Championship; All-Wellington Championship (A,B); North Shore Open (A,B); Waitakere Trust Open (A,B); Otago Club Championship (A-F); Wellington Queen's Birthday (A,B); North Island Championship; South Island Championship; Auckland CC Tournament; NZ Schoolpupils Championship; North Shore Club Championship (A-C); Upper Hutt Labour Weekend (A,B); Canterbury Club Championship; Canterbury Invitational; Auckland Labour Weekend; Otago Labour Weekend; Canterbury CC Tournament (A,B); Boyd versus Wansink match.

All players active within the last two years are included on the list. Asterisks denote provisional ratings based on fewer than 25 games. This rating list was produced using software developed by Rowan WOOD and Jim SIMMONS.

| | | | |
|----------------------|--------|----------------------|--------|
| 1 SMALL V A | 2353 | 44 CORNFORD L H | 2031 |
| 2 KER A F | 2316 | 45 PAHKLA P | 2020 * |
| 3 NOKES R I | 2293 | 46 HOPEWELL N H | 2018 |
| 4 SARAPU D | 2289 | 47 REYN I | 2006 |
| 5 SARFATI J D | 2285 | 48 WALSH B G | 2004 |
| 6 DIVE R J | 2282 | 49 MCKENZIE P D | 2002 |
| 7 GARBETT P A | 2276 | 50 SHARKO A V | 1989 |
| 8 LUKEY S G | 2275 | 51 HAASE G G | 1983 |
| 9 GREEN E M | 2256 | 52 MCNALLY I | 1983 |
| 10 APTEKAR L | 2243 | 53 VAN DYK T | 1982 |
| 11 CARPINTER A L | 2239 | 54 POMEROY A J | 1980 |
| 12 GREEN P R | 2228 | 55 HART R | 1972 |
| 13 WANSINK R | 2211 | 56 WEEGENAAR D P | 1971 |
| 14 MARTIN B M S | 2210 | 57 BARLOW M J | 1971 |
| 15 SMITH R W | 2191 | 58 JORDAN A W | 1965 |
| 16 LOVE A J | 2185 | 59 COOPER D J | 1961 |
| 17 GOLLOGLY D A | 2184 | 60 JOHNSTON A J | 1959 |
| 18 THOMAS B | 2157 * | | |
| 19 LEONHARDT W | 2153 | 61 CARRY R J | 1955 |
| 20 STUART P W | 2152 | 62 VAN DIJK P | 1951 |
| 21 HAWKES P D | 2148 | 63 STARK B | 1951 * |
| 22 MCLAREN L J | 2142 | 64 CARPINTER B A | 1944 |
| 23 METGE J N | 2137 | 65 GOODHUE N | 1943 |
| 24 HAMPL M | 2134 | 66 BENNETT H P | 1943 |
| 25 ANDERSON B R | 2131 | 67 LAMONT I | 1939 * |
| 26 FREEMAN M R | 2127 | 68 MARNER G | 1938 |
| 27 INNALA H | 2122 * | 69 DUNN P | 1927 |
| 28 WHALEY M G | 2115 | 70 ION G J | 1922 |
| 29 WEIR P B | 2109 | 71 FENERIDIS A | 1919 |
| 30 DREYER M P | 2104 | 72 SIMS M T | 1915 |
| 31 COOPER P R | 2104 | 73 BOYD K M | 1912 |
| 32 NOBLE M F | 2089 | 74 WHEELER B | 1909 |
| 33 DOWDEN R A | 2082 | 75 KER C M | 1907 |
| 34 SPAIN G A | 2082 | 76 MARTIN-BUSS B | 1907 |
| 35 STEADMAN M V R | 2082 | 77 ROBINSON J P | 1896 |
| 36 WILSON M C | 2081 | 78 FRANKEL Z | 1894 |
| 37 POTTGEISSER J | 2072 * | 79 FERGUSON R T | 1883 |
| 38 SPENCER-SMITH G J | 2060 | 80 MCDONALD J A | 1881 |
| 39 ALEXANDER B J | 2051 | 81 FOSTER F M | 1876 |
| 40 HENSMAN P J | 2050 | 82 KINCHAMT K D | 1874 |
| 41 ALDRIDGE G J | 2046 | 83 LYNN K W | 1873 |
| 42 FITZPATRICK S P | 2041 | 84 VAN DER HOORN M W | 1865 |
| 43 SPILLER P S | 2032 | 85 GRKOW A | 1860 |

| | | | |
|----------------------|--------|----------------------|--------|
| 86 VAN PELT J | 1856 | 146 BLAXALL C S | 1716 |
| 87 CONNOR B P | 1847 | 147 SMITH V J | 1710 |
| 88 ROSE C A | 1847 * | 148 CHANDLER J | 1709 |
| 89 BLAXALL N | 1844 | 149 GLOISTEIN B | 1708 |
| 90 VETHARANIAM P A R | 1843 | 150 REYNOLDS C P | 1707 * |
| 91 WHITEHOUSE L E | 1830 | 151 WHITEHOUSE C | 1706 * |
| 92 COLLINS P W | 1827 | 152 JACKSON R | 1703 * |
| 93 CAPIE M | 1825 | 153 SKERRET M | 1700 * |
| 94 TURNER M G | 1823 | 154 BOOTH A J | 1700 |
| 95 SINTON P J | 1822 | 155 SHUKER R | 1698 |
| 96 O'BOYLE D | 1817 | 156 COMPTON A | 1698 |
| 97 WIGBOUT M | 1816 | 157 DAVIES G | 1697 |
| 98 FREE T J | 1816 | 158 OKEY K M | 1697 |
| 99 BOYCE D A L | 1810 | 159 HOSKYN G A | 1695 |
| 100 FEASEY R A | 1805 * | 160 HEAP P | 1685 * |
| 101 NIJMAN B | 1805 | 161 VAN DAM S | 1683 |
| 102 MARSICK B H P | 1803 | 162 CHRISTOFFEL M D | 1682 * |
| 103 WILLIAMS B M | 1802 | 163 MULLAN A B | 1678 |
| 104 LIVAI I | 1798 * | 164 STEEL R G | 1672 |
| 105 KNIGHTBRIDGE W | 1797 | 165 CHANDRA S | 1670 * |
| 106 ADAMS D T | 1796 | 166 STEVENSON T | 1669 |
| 107 PITTS G L | 1792 * | 167 PRICE A J | 1669 |
| 108 SIMS I M | 1791 | 168 SNELSON P R | 1665 |
| 109 MATHIESON J S | 1790 | 169 DOLEJS D | 1659 |
| 110 EDWARDS D W | 1786 | 170 SHEAD D B | 1657 |
| 111 MONRAD P G | 1786 | 171 THOMSON O N | 1657 |
| 112 NIJMAN A J | 1780 | 172 DRAKE A S | 1656 |
| 113 CARTER G S | 1780 | 173 OOI W | 1654 * |
| 114 STOLEY D G | 1776 | 174 BOJTOR J | 1654 |
| 115 STERELNY K | 1776 * | 175 ELLIOT D B | 1652 |
| 116 SUTHERLAND J L | 1775 | 176 BENNETT R | 1649 * |
| 117 VAN NOBELEN R | 1773 | 177 ALLSOBROOK A J R | 1647 |
| 118 WILSON R T | 1770 | 178 FORSTER W | 1645 * |
| 119 WILKINSON E M | 1769 | 179 SCHWASS M P | 1644 |
| 120 RAWNSLEY L D | 1769 | 180 CAPPER D S | 1638 |
| | | 181 ROUNDILL R L | 1633 |
| 121 EARLE M R W | 1767 * | 182 WOOD R J | 1632 |
| 122 BAUMGARTNER R | 1765 | 183 MCINTOSH I H | 1632 |
| 123 ROBERTS M H | 1764 | 184 FORBES G | 1632 * |
| 124 ADAMS J M | 1764 | 185 GOODWILLIE C | 1631 |
| 125 RUTH S | 1763 * | 186 O'CONNOR J A | 1631 |
| 126 BORREN A M | 1762 | 187 BOYD D J | 1630 |
| 127 BOSWELL T J | 1762 | 188 TOYE P | 1626 * |
| 128 STRACY D M | 1761 | 189 BENNELL D J | 1626 |
| 129 AIMERS G | 1760 * | 190 HAAPU JNR S | 1626 * |
| 130 VETHARANIAM K | 1759 | 191 JOEL C | 1625 * |
| 131 LARK D | 1756 | 192 LANGLEY D B | 1622 |
| 132 BROWNLEE L R | 1753 | 193 CAMPBELL L S | 1622 * |
| 133 MITCHELL R S | 1749 | 194 HARE M | 1617 |
| 134 BELL C M | 1747 | 195 SARECZKY G | 1616 |
| 135 WHITLOCK H P | 1743 | 196 JOHNSTON H S | 1614 |
| 136 TUFFERY P B | 1742 | 197 ABURN S | 1612 |
| 137 FOORD M R R | 1741 | 198 MEARS G W | 1603 |
| 138 CRAWFORD R | 1739 * | 199 PETCH W H | 1601 |
| 139 ROBERTS E N | 1734 * | 200 SANGSTER A | 1598 |
| 140 BOSWELL W | 1726 | 201 VON'T STEEN R | 1598 |
| 141 WINFIELD A | 1722 | 202 BELL D I | 1597 |
| 142 REID A V | 1721 | 203 COOK F | 1595 |
| 143 HOTHERSALL R J | 1721 * | 204 JOHNSON G | 1595 |
| 144 BANKS G B | 1719 | 205 LE Y | 1585 * |
| 145 MAZUR J J | 1719 | 206 ALLEN E G | 1584 |

| | | | | | | | |
|-----------------------|--------|----------------------|--------|-------------------|--------|---------------------|--------|
| 207 HAIR P I | 1583 | 267 VECOVSKY P | 1481 * | | | | |
| 208 POWELL P | 1582 * | 268 BENSON C | 1480 * | 327 ASHE M | 1385 | 387 WOODING J | 1277 * |
| 209 KASMARA A H | 1581 | 269 ROCKS M | 1479 | 328 MORROW D | 1384 | 388 VAN DER MEY P F | 1277 |
| 210 BORREN A | 1580 * | 270 GIBB J L | 1476 | 329 PETROVE E M | 1378 * | 389 HOFSTEEDE J | 1276 |
| 211 JOHNSTONE R B | 1578 | 271 BRETT K W | 1476 | 330 DALE J | 1374 | 390 WALKER C | 1274 |
| 212 MCINTOSH J | 1576 * | 272 YEO T S | 1474 | 331 MAES H | 1374 * | 391 WHYMAN K | 1271 * |
| 213 EMETT B G | 1576 | 273 VAN ZOOMEREN J | 1473 * | 332 PYNE T | 1372 * | 392 RDEVEN G | 1268 * |
| 214 LILLIS D | 1574 * | 274 BOYD J K | 1473 | 333 NICHOLSON B | 1371 * | 393 PETRASICH T | 1267 * |
| 215 YOUNG P | 1573 * | 275 KAY J B | 1472 | 334 SHELTON M | 1370 * | 394 BROWNLEE T J | 1267 * |
| 216 TRUNDLE G E | 1573 | 276 RAMSAY W | 1467 | 335 GILL G | 1369 * | 395 HILL S D | 1261 |
| 217 KING P C | 1571 | 277 RUPASINGHE S D | 1467 * | 336 PILLSBURY R | 1368 * | 396 BOROVSIS J | 1260 |
| 218 BURNHAM D S | 1570 * | 278 HEALEY R | 1461 | 337 BUNCE C | 1366 * | 397 CROSSIE P | 1259 * |
| 219 YUAN T | 1569 * | 279 MCCALL A | 1459 * | 338 DE ASA A | 1365 * | 398 PATEL S | 1254 * |
| 220 RAYNER E | 1568 | 280 ARVIN E M | 1458 * | 339 CLARKSON R D | 1357 * | 399 HARRIS K | 1253 |
| 221 CUNNINGHAM P D | 1568 | 281 HIGGINS M E | 1457 * | 340 ARCHDALL D | 1357 * | 400 GARLAND M | 1253 |
| 222 FREEMAN B W | 1567 | 282 WILCOCK P R | 1457 | 341 ARNULL V E | 1354 | 401 WINSOR B M | 1253 |
| 223 MILNE D J O | 1564 * | 283 TALAIC L | 1456 | 342 SOUTHGATE B | 1353 * | 402 HODDER J | 1252 |
| 224 STANTON R A | 1562 | 284 MCLEAN R E | 1453 * | 343 RUBINI B | 1353 | 403 CHANG A R | 1250 |
| 225 STRETCH W R | 1557 | 285 GRAINGER S | 1453 * | 344 STEPHENS T C | 1352 | 404 WELLS D | 1249 * |
| 226 CHAMBERLAIN M | 1556 | 286 CALDER R J | 1449 | 345 HEPER I D | 1352 * | 405 ORMSBY L J | 1248 * |
| 227 LUKETINA I | 1549 * | 287 GIBSON G | 1449 * | 346 MCMULLAN B | 1348 * | 406 STRICKETT R L | 1240 |
| 228 DEVLIN S | 1545 * | 288 LYALL S | 1448 * | 347 STOTT C J | 1345 * | 407 MALCOURONNE A | 1239 |
| 229 CRAIGIE A B | 1544 | 289 SAVAGE B | 1444 | 348 PLEDGER T K | 1342 | 408 MCRAE J | 1237 |
| 230 THYE G F | 1541 | 290 WOLKEN G | 1443 * | 349 MOORE S M | 1338 | 409 LEVY G | 1235 * |
| 231 KELLY S | 1541 | 291 BLATCHFORD J | 1443 | 350 TOKI J D | 1337 * | 410 SOMOGYVARY L P | 1227 * |
| 232 ROSIE E | 1539 * | 292 POWELL R A | 1442 | 351 SMITH H | 1337 * | 411 LESTON J | 1220 * |
| 233 JONES W | 1537 | 293 HIPKINS B | 1441 | 352 WINTER W | 1331 | 412 SULLIVAN B | 1219 |
| 234 DIXON H A | 1535 | 294 THELWALL I | 1441 * | 353 WEIR T J | 1331 | 413 CHAPMAN J | 1216 * |
| 235 BYFORD C | 1535 | 295 LEWIS P | 1439 * | 354 GILLESPIE J G | 1331 * | 414 PEDDIE W S | 1212 * |
| 236 LEVY R | 1534 | 296 BROUGHTON J | 1436 | 355 HOWARD A B | 1329 * | 415 TWEDDEL E | 1209 |
| 237 GIBBONS E | 1533 * | 297 WATSON R | 1434 * | 356 DUNN S | 1329 | 416 WILLIAMS R G | 1208 |
| 238 BOOTH S L | 1533 | 298 PLUMPTON D | 1432 | 357 NICKERSON D | 1329 * | 417 SCHOLLES R | 1205 * |
| 239 VANDENBERGH B | 1532 * | 299 PARLANE L N | 1431 | 358 GONIN R C E | 1328 | 418 WHITAKER B | 1204 * |
| 240 GRACE K | 1530 | 300 SMITH C | 1428 * | 359 PETI L | 1326 * | 419 RAWNSLEY D C | 1197 |
| 241 KOLODZINSKI S J | 1526 * | 301 PRESTON J N | 1426 | 360 REID A | 1325 * | 420 MCELWEE I | 1195 * |
| 242 WOOD B | 1522 | 302 TOMLINSON S | 1423 * | | | | |
| 243 HAMPTON R | 1521 | 303 KWOK A | 1420 * | 361 SCHWARZER M | 1322 * | 421 MILLS M | 1194 * |
| 244 WORN J | 1520 * | 304 MCGORAM T | 1420 * | 362 GREVERS L P | 1320 | 422 TAMAIRA M | 1194 * |
| 245 SHANAHAN M | 1519 | 305 VAN BODEGRAVEN T | 1420 | 363 CHAMLEY G | 1319 * | 423 MARTIN J | 1193 * |
| 246 DWYER T | 1516 | 306 WARD C | 1419 | 364 DONNELLY J M | 1318 * | 424 GALES A E | 1190 * |
| 247 BRYANT D | 1516 * | 307 STONE R | 1416 | 365 SHIELDS P | 1319 * | 425 FAIRLEY D | 1178 * |
| 248 WILKES J | 1513 | 308 JEFFRIES T | 1415 * | 366 GUERIN G | 1315 * | 426 PATEL T | 1177 * |
| 249 WASTNEY S | 1510 * | 309 WEHI D | 1415 * | 367 CROSLAND G W | 1311 * | 427 SANDS B | 1174 * |
| 250 MACKWAY-JONES R | 1502 * | 310 SIMMONS J R | 1411 | 368 MCKENZIE M R | 1311 * | 428 FULLER R | 1170 * |
| 251 SHARDY Z | 1502 | 311 BAYLIS P | 1409 * | 369 HURLEY P | 1310 * | 429 CAMERON D | 1170 |
| 252 LOOS R | 1498 * | 312 WILLIAMS C | 1409 * | 370 MCGAHEY J | 1309 | 430 SULLIVAN G J | 1161 |
| 253 HOLLAND D | 1498 * | 313 STEWART B K | 1408 | 371 ALES H | 1309 | 431 SIMON V | 1161 * |
| 254 LEZARD G | 1494 | 314 WIGBOUT R | 1406 * | 372 LANGLEY D B | 1308 * | 432 HOSEASON J | 1160 * |
| 255 SIEVEY J C | 1494 | 315 OGIER J | 1404 * | 373 CLARK R | 1305 | 433 DIRSKE H | 1158 * |
| 256 JONES H | 1491 | 316 ZWART I | 1403 | 374 WAGSTAFF G | 1305 * | 434 MAHER N | 1153 * |
| 257 MORRISON M K | 1488 | 317 WILSON C | 1401 | 375 HOLLAND R | 1303 | 435 EBBETT W | 1153 * |
| 258 JEFFRIES A | 1486 * | 318 VINCENT M | 1401 | 376 MACDONALD J R | 1300 * | 436 SCHURR R | 1147 * |
| 259 STACEY G | 1485 * | 319 MCCARTHY P D | 1400 | 377 BADGER A | 1300 * | 437 NEWMAN B | 1146 |
| 260 BROWN B | 1485 | 320 PE'A P | 1396 * | 378 MEADOWS G P | 1299 * | 438 MILFORD B | 1139 * |
| 261 HENDERSON A J | 1485 | 321 WATSON M J | 1394 | 379 MCILROY M | 1296 * | 439 STONES I F E | 1138 |
| 262 COLLINS L | 1484 * | 322 GILLARD M | 1391 * | 380 HELLYAR M | 1295 * | 440 COOK L | 1137 * |
| 263 DES FORGES J | 1482 | 323 SCHULTZ A E | 1390 | 381 GOLD H | 1291 | 441 WESTON R | 1137 * |
| 264 BEN-ISRAEL L | 1482 | 324 DUNWOODY M L | 1390 | 382 BOWLER R | 1291 | 442 HUNT M | 1137 * |
| 265 HAAPU SNR S | 1482 * | 325 TUFFERY E | 1389 | 383 HUNT T | 1288 * | 443 POWELL T H | 1133 * |
| 266 SPENCER-SMITH P A | 1481 | 326 GORDON M A | 1388 | 384 KIRKMAN M | 1287 * | 444 KERR T | 1124 * |
| | | | | 385 PILLSBURY A | 1281 * | 445 MISA A | 1107 * |
| | | | | 386 BRAS C | 1281 * | 446 MISA G | 1105 * |

| | | | |
|-------------------|--------|--------------------|-------|
| 447 LEIH R | 1102 * | 475 COURTNEY H | 958 * |
| 448 WONG K | 1100 | 476 CHURCHER M | 956 * |
| 449 JONES G M | 1099 | 477 HAY V | 953 |
| 450 STAPLETON P | 1097 * | 478 NEWMAN K | 934 * |
| 451 MCGURK A | 1094 * | 479 TURKETO P | 906 * |
| 452 HENDERSON J | 1086 * | 480 ZOHRAH P D | 904 * |
| 453 WILKINS C J | 1081 * | 481 PATTON A | 878 * |
| 454 NEWMAN D A | 1075 | 482 SALLAI M | 850 * |
| 455 CARTHEW B | 1074 * | 483 DOUGLAS R | 833 * |
| 456 MCINTYRE I M | 1069 * | 484 BREWER R | 769 * |
| 457 WILTON H | 1062 * | 485 GIBSON A | 725 * |
| 458 HIRON M K | 1058 * | 486 ROGERS D | 717 * |
| 459 WILLIAMS B | 1048 * | 487 SAVAGE D | 694 * |
| 460 SHAW B | 1033 * | 488 MACKENZIE R | 686 * |
| 461 POTTGEISSER P | 1033 | 489 WHITE S J | 681 * |
| 462 MCCUSKER B | 1024 * | 490 UTTING M | 676 * |
| 463 SIM M | 1018 * | 491 MCNABB M | 669 * |
| 464 VISSER F R | 1015 * | 492 SHEAD A G | 651 * |
| 465 TURNER B | 1012 * | 493 SUTHERLAND P G | 606 * |
| 466 HALE P | 1009 * | 494 MCGEACHIN J | 585 * |
| 467 LEE R | 1007 * | 495 CHANDLER B | 574 * |
| 468 SWARBRICK J | 1003 * | 496 DUNN A | 572 * |
| 469 JONES M | 987 * | 497 CROSADO C | 568 * |
| 470 BARKER I | 987 * | 498 BANKS L J | 562 * |
| 471 MILLS G | 986 * | 499 LADD A G | 547 * |
| 472 WEBBER C H | 985 | 500 COLEY K | 494 * |
| 473 SHEAD A T | 964 | 501 TENI J | 430 * |
| 474 NEAL R M | 961 * | 502 PANIANI J | 383 * |

LATEST RANKINGS By Bill RAMSAY

NEW ZEALAND gained two FIDE Masters with the publication of the July 1988 rating list. Jonathan Sarfati and Philip Clemence (who is in North America we're told) reached the 2300 points level with more than 30 rated games each. Included in the events rated were the 1988 national championships and the Plaza tournament. The order as of July 1988 is:

V Small f 2340; D Sarapu m 2335; P Clemence f 2320; J Sarfati f 2315; P Green 2300; A Ker 2295; B Garbett 2295; E Green 2290; B Martin 2280; R Dive 2265; R Smith 2250; N Metge 2230; M Levene 2225; D Gollogly 2215; L Cornford 2210; P Goffin 2205; R Gibbons 2205; A Love 2205.

For comparison, Murray Chandler g Eng is on 2605.

There are only three New Zealand registered women on the current list: F Foster 2005; J Sievey 2005; V Smith 2005.

There is one FIDE master on the inactive list: R Nokes f 2310. Others on the list are C Evans 2300; R Sutton 2295; B Watson 2260; L Aptekar 2240; B Anderson 2230; A Dowden 2220; A Carpenter 2210; W Stretch 2005. P Stuart has been delisted with 11 games to his credit.

A brief look at the list showed that USSR did not have the biggest lineup, that was

Yugoslavia (where the list is computed and printed) with 807 men and 94 women. However, the USSR's 2-1 ratio of men to women was significant in that many countries had ratios of 10-1 or more. At 6-1 New Zealand was one of the more emancipated nations.

C Laird f 2295 and M Mott-McGrath 2015 are two Aussies you may have heard of. R Wade m Eng is on 2305.

NEW ZEALAND CHESS SUPPLIES

PO BOX 42090 WAINUIOMATA

PHONE (04) 648-578

The official stockists of chess books, sets and all playing equipment for the New Zealand Chess Association. Chess computer a speciality - all leading brands stocked. NZ distributors of NOVAG and MEPHISTO World Champion Modules.

PLASTIC STAUNTON PATTERN SETS - SOLID AND FELT BASED

| | |
|--------------------------------------------------------------------------------------------------------|---------|
| 67mm King (boxed) 'Holdson' brand | \$10.50 |
| 98 mm King (loose in plastic bag) semi-gloss finish | \$13.50 |
| FOLDING BOARDS - TOURNAMENT STANDARD | |
| 360mm/2 'Holdson' cardboard (black/white squares) | \$ 3.50 |
| 425mm/2 Semi-flexible 'corflute' plastic (dkbrown/wh) | \$ 4.00 |
| 480mm/2 'Holdson' cardboard full size (green/lemon squares reduce eye strain and assist concentration) | \$ 5.00 |
| ROLL-UP VINYL BOARD | |
| 425mm/2 Lie flat mat (dkbrown/white or dkbrown/ lt brown) a-h and 1/8 algebraic symbols on border | \$ 6.00 |
| CHESS TIMERS (CLOCKS) | |
| BHB 'Turnier' basic club clock - plain plastic case | \$57.50 |
| BHB 'Standard' same as above in imitation wood grain | \$62.50 |
| TOURNAMENT STATIONERY | |
| Pairing/result card - provides for 11 rds per player | \$.10 |
| Cross table/result chart - 20 players 6-11 rounds | \$ 1.50 |
| Packet of 200 loose score sheets - 70 moves/diagram | \$ 5.00 |
| Packet of 500 loose score sheets - 70 moves/diagram | \$11.00 |
| Score pad - 50 games of 60 moves/disgram | \$ 2.00 |
| Score book - spiral bound (lies flat when open at any page) - 50 games of 70 moves with index and dia | \$5.50 |
| Adjournment envelope (sealed move/unfinished game) | \$.10 |

WE ALSO STOCK A WIDE RANGE OF WOODEN SETS AND BOARDS AND ISSUE A CATALOGUE OF SEVERAL HUNDRED BOOKS ON CHESS, RANGING FROM BEGINNER TO EXPERT. PLEASE WRITE OR PHONE FOR A COPY.

Cash, cheque or Money Order please, with order, unless on School stationery. All prices are strictly nett and include GST at the standard rate. GST invoices are issued with goods.

For all orders under \$200 in value please add 4% to cover post/courier and packing charges. All orders over \$200 are delivered free anywhere in New Zealand. Cheques should be made payable to NZCS. We can usually make delivery within 3 days of receipt of order. Customers will be advised within 8 days if there is a delay for any reason. Enquiries to BRIAN FOSTER on (04) 648-578 - 1 24-hour phone answering service is operating.

AUCKLAND STOCKIST: IM Ortvin Sarapu, 8 Barrington Rd, Auckland 2. All PLaying equipment and chess stationery. School supplies a speciality. (09) 763-083

CHRISTCHURCH STOCKIST: David Cameron - Scorpio Books, Cnr Hereford and Oxford Terrace, Christchurch. Books, sets, clocks etc. (03) 792-882.

LOCAL NEWS

ELEVENTH WAITAKERE TRUST OPEN -
By CM Bob SMITH

SIXTY-eight players, some from as far afield as New Plymouth and Wellington, turned out on July 2 for the eleventh annual tournament run by the Waitemata Chess Club and sponsored by the Waitakere Licensing Trust.

More than \$1600 was on offer in prize money in two separate divisions, including at least \$400 for the open winner and \$200 for the 'B' grade winner.

The competition was tough: the players included Olympiad team members IM Ortvin Sarapu and CM Russell Dive, co-North Island Champion NM Peter Stuart, NM Paul Garbett and former national representatives NM Ewen Green, CM Bob Smith and Peter Weir, as well as a number of up and coming juniors.

There were also two computers in the 'A' grade, both with

ratings over 2000.

Twenty-eight players contested the Open Grade, with the other 40 in the 'B' grade, which was restricted to players under 1700. ROUND 1: The only real upset in the first round was Peter Stuart's draw with Gavin Ion (1851). However, Brian Carthew, the operator of CXG 3008 must have been disappointed to see the machine beaten by Barry Williams (1747).

Sarapu beat Ian McNally in quite a nice game. SARAPU - McNALLY - French Defence: 1. e4 e6 2. Nf3 d5 3. e5 c5 4. b4 cb 5. d4 b6 6. a3 Ba6 7. Bxa6 Nxa6 8. Qd3 Nc7 9. ab Bxb4+ 10. c3 Be7 11. 0-0 Qd7 12. g4 f6 13. ef gf 14. Bf4 Bd6 15. Bxd6 Qxd6 16. Na3 Nge7 17. Kh1 Ng6 18. Nb5 Nxb5 19. Qxb5 Ke7 20. Rfe1 Rhd8 21. Re3 Rd7 22. Rae1 Nf8 23. g5 a5 24. gf Kxf6 25. Ne5

Rc7 26. Rg1 Ng6 27. Rf3+ Kg7 28. Qd3 Rf8 29. Rxc6+ 1-0.

ROUND 2: The biggest upset was Bob Smith's (2188) loss to Graeme Spain (2077) when the former ventured into Spain's favourite gambit opening and was caught in a book line. Martin Dreyer (2029) did well to hold Russell Dive to a draw; Wolf Leonhardt lost to Greg Spencer-Smith; Peter Weir lost to Stuart and Rick Hothersall (1602) beat McNally (1976).

ROUND 3: Only five players had two out of two - Sarapu, Garbett, Green, Spencer-Smith and Spain.

Sarapu out-techniqued Spain and Garbett out-tacticed Spencer-Smith to become the joint leaders. Green went down in a complex game to Russell Dive. Other favoured players climbed back out of the mire a little, with Smith beating Williams, Weir defeating Notley and Leonhardt taking the point against Baumgartner. Peter Stuart could only manage a draw against Dreyer.

ROUND 4: Sarapu and Garbett predictably had a draw - though

they did play 29 moves! Smith came back to form with a good win over Dive, Green beat the CXG computer comprehensively, Spain unwisely repeated his opening from round two against Leonhardt and Dreyer also reached three points when Weir overlooked a piece. The latter withdrew ill after this game.

Stuart continued to show poor form, being wiped out in 19 moves by Spencer-Smith, who was now also on three points.

SMITH - DIVE, Alekhine Defence: 1. e4 Nf6 2. e5 Nd5 3. d4 d6 4. Nf3 g6 5. Bc4 Nb6 6. Bb3 Nc6 7. Ng5 e6 8. Qf3 Qe7 9. ed cd 10. c3 Bg7 11. 0-0 h6 12. Ne4 f5 13. Ned2 e5 14.

Re1 Bd7 15. Na3 0-0-0 16. Ndc4 Nxc4 17. Nxc4 g5 18. d5 Nb8 19. Be3 b6 20. a4 f4 21. Nxb6+ ab 22. Bxb6 Rdf8 23. Qd3 Kb7 24. a5 Na6 25. Bc4 Ra8 26. Bxa6 Rxa6 27. b4 g4 28. c4 Qe8 29. Rac1 Kb8 30. b5 Ra8 31. a6 Bf6 32. Qa3 Ra7 33. Qxd6+ Ka8 34. Bxa7 1-0.

SPENCER-SMITH - STUART, Sicilian, Bastrikov Variation: 1. e4 c5 2. Nf3 e6 3. d4 cd 4. Nxd4 Nc6 5. Nc3 Qc7 6. Be2 a6 7. 0-0 Nf6 8. Be3 Eb4 9. f4 Bxc3 10. bc Nxe4 11. Bd3 Nf6 12. f5 e5 13. Qe1 0-0 14. Qg3 Nh5 15. Qg4 ed 16. Qxh5 f6 17. Bc4+ Kh8 18. Rf3 de 19. Qxh7+ 1-0.

ROUND 5: The tournament was still wide opening going into the final round. Sarapu and Garbett had the edge with 3.5/4, but no fewer than five players were only half a point behind. Of these, Green and Smith had the toughest tasks, Green having black against Sarapu and Smith black against Garbett. Spencer-Smith also had a difficult game lined up, having black against Dive.

In the event, Sarapu and Green agreed a quick draw. This meant Garbett could win the tournament outright if he beat Smith. He tried hard in a sharp Sicilian, but Smith was equal to the task and Garbett finally had nothing

better than to offer the draw, which was accepted with five more minutes on the clock. Meanwhile Dive beat Spencer-Smith and Dreyer self-destructed against Leonhardt.

Thus Sarapu, Garbett and Leonhardt shared first place on 4/5, followed by Smith, Green, Dive and Paul Cooper on 3.5. Cooper had caught up by beating Stuart, who ended a miserable tournament on 2 points.

The winners took home \$275 each - those half a point behind got \$25!

THE 'B' Grade was won jointly by the top seed, Colin Whitehouse (Waitemata) and fifth seed Julius Bojtor (Auckland Chess Centre). They won their first four games and then drew against each other in the final round. Whitehouse and Bojtor won \$175 each - good money for the 'B' Grade! Third equal were P Heap (Hamilton) and R Bennett (Auckland Chess Centre) with 4/5.

RESULTS: OPEN GRADE - 1= 0 Sarapu, P Garbett, W Leonhardt (4/5); 4= R Dive, E Green, R Smith, P Cooper (3.5); 8= CXG 3008, G Spencer-Smith, G Spain, M Dreyer, I McNally, R Hothersall (3); 14= J Robinson, G Ion (2.5); 16= P Stuart, P Weir, B Martin-Buss, J Van Pelt, R Baumgartner, B William (2); 23= Super Forte, D Notley; B Emmett (1.5); 26= L Whitehouse, B Carthew (1); 28 v Smith (.5).

B GRADE - 1= C Whitehouse, J Bojtor 4.5/5; 3= P Heap, R Bennett (4); 5= C Joel, S Van Dam, M Morrison, R Johnstone, S Devlin, P Hair, T Dwyer (3.5); 12= J O'Connor, A Kasmara, G Mears, C Wilson, E Tuffery, D Morrow, C Walker (3); 19= B Savage, M Dunwoody, R Pillsbury, B Whitaker (2.5); 23= C Goodwillie, J Broughton, I Zwart, P Shields, G Crosland, P Lewis, T Petrasich (2); 31= B Stewart, M Hellyar, H Dirske, A Shead (1.5); 35= M Garland, D Rawnley, A Pillsbury, V Simon, K Newman (1); 40 H Courtney (.5).

! JUST PUBLISHED !

EDUARD GUFELD'S
NOTES ON
KASPAROV v KARPOV
SEVILLE 1987

Full analysis of the 24 games in
the IGMsinimitablestyle

Spiral bound to lie flat
80 pages

** \$18.50 **

From: New Zealand Chess Supplies
PO BOX 42090 Wainuiomata

A 'BOVOGO' publication
produced in New Zealand

The World's ONLY Chess Tutorial Software!

Learn the subtle nuances of the game from your own personal chess mentors. With Enlightenment Inc.'s *Living Chess Library*™ your own personal chess mentors guide you through the intricate strategies of the noble game of chess. Learn to play chess on a whole different level, where subtle nuances of the game are made clear with detailed on-screen commentary and animated graphics. Our chess mentors are engaging in their chess instruction as they explain openings, midgame and endgame play, as well as tactics with specific piece combinations you can use anytime. Whether you're expert-rated or don't even know how the pieces move, these chess tutorials explain theory and time-tested techniques — at your own pace and level, on the topics you choose.

Paul Whitehead Teaches Chess

\$34.95

The World's Greatest Chess Teacher and former American Open Champ gives you 40 hours of interactive, animated tutorial on more than 600 chess topics. If you are already a certified USCF Expert or higher, you can skip this one. If not, you will learn from its huge sections on Endgames and Middlegames, and it's sampler of Popular Openings. In use in over 300 school chess clubs!

Includes the *Coffeehouse Chess Monster*™, which tied for 1st Place, 1987 U.S. Computer Chess Open (PC Division).

Guide To Chess Openings by Jeremy Silman

\$34.95

This is Senior Master Jeremy Silman's personal opening's repertoire (about 1300 opening lines, fully annotated). Stick with Silman's advice, and you can handle anything your opponent throws at you. Includes two databases, Play The White Pieces and Play The Black Pieces, as well as the superb *Coffeehouse Chess Monster*™ opponent program.

Learn enough and pit your skills against the "Monster"— if you dare to try!

To further complement the learning experience, the *Coffeehouse Chess Monster*™ opponent will automatically set up the lesson you were viewing in the tutorial, letting you play out a variation or try your own moves against the computer. This is no simple opponent either — 1st place winner at the 1987 U.S. Computer Chess Open, as well as the best personal computer program at the 1986 World Micro Chess Championship. The Monster has all the features you'd expect from a championship-level opponent, including save game, print game, undo moves and switch sides. With 9 playing levels it can indeed be a monster, but also has an easy mode for more equal play with its human counterparts.

50 Annotated Chess Classics \$19.95

Fully annotated by American Open Champion Paul Whitehead

Studying the games of the great chess Masters, fully annotated on-screen by American Open Champion Paul Whitehead, is an easy way to grasp the action and the subtleties of chess. From the free-swinging 19th Century masters, through the Bobby Fischer era, to the present Kasparov-Karpov era, Whitehead presents the World's 50 most exciting chess games.

This is not a comprehensive tutorial on every aspect of chess like Paul Whitehead Teaches Chess. It is just a delightful romp through eight ages of chess and fifty of the most smashing, crashing, bone-crushing games of chess ever played, fully annotated by the best chess tour-guide ever, Paul Whitehead.

Najdorf Sicilian Defense

\$19.95

by Louie Ladow and

Peter Blyviasas, FIDE Grandmaster

A favorite of World Champion Bobby Fischer and of six-time U.S. Champion Walter Browne, the Najdorf Sicilian is for those fearless souls who want to win even while playing the Black pieces. Again, we have compiled the best existing analysis, then let Grandmaster Blyviasas improve upon it.

Enlightenment, Inc.

Bobby Fischer's Career

\$22.50

This program is a departure from our extensively annotated tutorials. Here we present the 777 games of Fischer's entire professional chess career in the best possible way — animated on computer. Watch the great games of chess come to life on your computer screen, with the ease of a single keystroke. Quickly grasp the game action without juggling your attention between the chessboard and notation in a book.

King's Indian Defense

\$19.95

(4.e4 lines)

by Edward A. Chang and

Peter Blyviasas, FIDE Grandmaster

This is a complete and very deep analysis of one of the most popular openings in chess. It includes some original analysis by Grandmaster Blyviasas that is revealed here for the first time, as well as the best existing analysis compiled from many sources. You can spring these lines on even the most advanced players.

Available for the IBM (5.25" or 3.5"), all Apple II (5.25") or Commodore 64/128 computers. Be sure to include an additional \$2.50 per program (\$4.00 per program for foreign orders) for shipping with all orders. Allow 2-4 weeks for delivery. Send check or money orders in U. S. dollars only and mail all orders to:

Enlightenment, Inc.
PO Box 20937
Piedmont, California 94620-0937 U. S. A.

AUCKLAND LABOUR WEEKEND TOURNAMENT

By Martin DREYER and Paul COOPER

A MODERATE field of 22 players took part in the tournament, which was held at the Auckland Chess Centre. With only five rounds there were more decisive games played and this is reflected in the results. CM Peter Green and CM Robert Smith proved clearly superior to the rest of the field, with a convincing one point margin ahead of the players who shared third.

Spain and Marsick both played well at times and can be satisfied with their placings. Paul Cooper performed satisfactorily as player and director, while IM Ortvin Sarapu and Spencer-Smith will be hoping for a better performance next year.

CM P Green - P Cooper, Dutch Defence:

| | | |
|-----|-------|------|
| 1. | Nf3 | f5 |
| 2. | d4 | Nf6 |
| 3. | g3 | b6?! |
| 4. | Bg2 | Bb7 |
| 5. | 0-0 | e6 |
| 6. | c4 | Be7 |
| 7. | d5 | Qc8 |
| 8. | Nc3 | Na6 |
| 9. | e4 | fxe4 |
| 10. | Ng5 | exd5 |
| 11. | cxd5 | 0-0 |
| 12. | Ncxe4 | Nc5 |
| 13. | Bf4 | |

13. Nxf6+ Bxf6 14. Qh5 and if now 14. ... h6 15. Ne4 leaves black weak on the light squares, but 14. ... Bxg5 15. Bxg5 d6 leaves black OK.

| | | |
|-----|-------|--------|
| 13. | ... | Ncxe4 |
| 14. | Nxe4 | Nxd5!? |
| 15. | Nd6 | Bxd6 |
| 16. | Bxd5+ | Kh8 |
| 17. | Bxd6 | cxd6 |
| 18. | Bxb7 | Qxb7 |
| 19. | Qxd6 | Rf6 |
| 20. | Qd4 | d5 |

Black has an isolated passed pawn. Although white is forced to blockade it, black's next few aimless moves and his slightly more exposed king prompt white to

try and make something of his slightly more active pieces.

21. Rae1 Qf7?
21. ... Rf7 immediately to prevent any threats of an invasion of the seventh rank may be preferable.

| | | |
|-----|------|------|
| 22. | Re5 | Rd8 |
| 23. | Rfe1 | Qg8 |
| 24. | a4 | Rfd6 |
| 25. | h4 | Qf8 |
| 26. | h5 | h6 |
| 27. | Kg2 | Kg8 |
| 28. | R1e2 | R6d7 |
| 29. | b4 | Qf7 |
| 30. | Rd2 | Rd6 |
| 31. | Rde2 | R6d7 |
| 32. | g4!? | |

With only 5 minutes left on his clock, white decides to go for broke. Black is allowed some activity and obtains dangerous threats on the 'e' file.

| | | | | |
|-------------|-----------------|---------|------|-----|
| 32. | ... | Rc7 | | |
| 33. | Rf5 | Qd7 | | |
| 33. ... Rc4 | 34. Rxf7 | Rxd4 | 35. | |
| Rxa7 | Rxg4 | 36. Kh3 | Rxb4 | 37. |
| Ree7 | d4 with a draw. | | | |

| | | | | |
|-----------------------------------|-----------------------|----------|---------|----------|
| 34. | Ree5 | Rc4 | | |
| 35. | Qd1 | Rxb4 | | |
| 35. ... d4 | 36. Rd5 | Qc6 | 37. | |
| Rf3 | Re8 (with the idea of | | | |
| ... Rc3) | can be met by 38. Rf7 | | | |
| Rc3 | 39. Qf5 | Rd8 | 40. Rd7 | Rxd7 |
| 41. Qxd7 | Qxd7 | 42. Rxd7 | Rc4 | 43. |
| Rxa7 | Rxb4 | 44. a5 | bxa5 | 45. Rxa5 |
| d3 | 46. f6 | Rd4 | 47. Ra1 | for |
| example. White is still able to | | | | |
| create some threats (eg Rxg7+, | | | | |
| unpinning rook etc.) and maintain | | | | |
| a watch on the d pawn. | | | | |

| | | |
|-----------------------------------|---------|--------|
| 36. | Rxd5 | Qc6 |
| 37. | f3 | Re8 |
| 38. | Rd8! | Rb2+ |
| 38. ... Rxg4+?? | 39. Kh3 | wins a |
| rook because of the threat of 40. | | |
| Qd5+) | | |

| | | |
|---------------------------------|-----|-----|
| 39. | Kh3 | Kh7 |
| 40. | Qd3 | Rb3 |
| Black had intended 40. ... Rxd8 | | |
| which is refuted by 41. Rd5. | | |

The game was adjourned at this point, but was agreed drawn without resumption. White sealed 41. Qxb3, but after 41. ... Rxd8

both kings are too exposed to allow winning chances. =/=.

Ian McNALLY - E Arvan, King's Gambit:

1. e4 e5
2. f4 exf4
3. Bc4 Nf6
4. Nc3 Nc6
4. ... c6!

5. d4 Bb4
6. Qd3 d6
7. Bxf4 0-0
8. Nge2 Bg4
9. 0-0 Qd7
10. Bg5 Ne8
11. Nd5 Bxe2
12. Qxe2 Nxd4
13. Qh5 Bc5
14. Kh1 Ne6
15. Rf3 Nxf5
16. Qxg5 Bd4
17. Raf1 Kh8
18. Rh3 h6
19. Ne7 Nf6
20. Rxh6+ gxh6
21. Qxh6+ Nh7
22. e5 Qxe7
23. Rf6

Rolling a boulder in front of the f pawn, Fischer-Benko, US Champs 1963-4.

23. ... Bxe5??
24. Bd3 1-0

Martin DREYER - G SPENCER-SMITH, King's Indian:

1. d4 Nf6
2. c4 g6
3. Nc3 Bg7
4. e4 d6
5. f3 0-0
6. Be3 e5
7. d5 Nh5
8. Qd2 Qh4+
9. Bf2 Qf4
10. Be3 Qh4+
11. g3 Nfg3
12. Qf2

12. Bf2? Nxf1 hitting the queen.

12. ... Nxf1
13. Qxh4 Nxe3
14. Ke2 Nxc4
15. Nd1

Black has two bishops, two pawns and attacking chances for his queen.

15. ... Na6
16. Rc1 Nb6
17. Nh3 Bd7
18. Ne3+-
Karpov-Velimirovic, 1976.

18. ... Rae8
19. Ng4 f5
19. ... f6 is safer, maintaining an eye on g5.

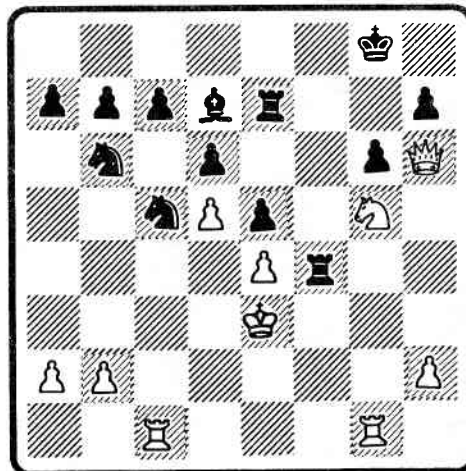
20. Nh6+ Bxh6
20. ... Kh8 21. Rhg1! (not 21. Ng5 Bf6! and black has the advantage).

21. Qxh6 fxe4
22. fxe4 Nc5
Better is 22. ... Bxh3 removing the dangerous white knight.

23. Rhg1 Re7
23. ... Nxe4 loses to 24. Rxc6+!

24. Ng5 Rf4!
25. Ke3!?

Perhaps I should have sacrificed the exchange immediately with 25. Rxc5, but after 25. ... dxc5 26. Nxe7 black can at least draw by repeatedly checking with his rook along the fourth rank.



POSITION AFTER 25.Ke3

KASPAROVTM CHESS COMPUTER KEEP DAD IN CHECK

Surprise dad with a gift that'll keep him happy for hours... and sharpen his chess game to competition standard with a superbly designed KASPAROV CHESS COMPUTER! Pocket-portable or nine table-top models to choose from. Kasparov Chess computers are recognised as the world's top selling choice for beginners and serious players alike.

GREAT VALUE FOR MONEY

World Chess Champion, Garry Kasparov himself has verified the performance of these fine computers, and each one is covered by a worldwide 12 month guarantee.

FROM POCKET CHESS TO THE MASTERS CHOICE!

Pocket Chess. Recommended retail price \$79.00. Ideal for occasional players or beginners. Pocket Chess is the perfect travelling companion. Latest sensor technology and efficient, low power electronics. Alkaline batteries provide 350 hours of play. Built in memory has a 2-year recall, so even if a game is interrupted every position is automatically stored until play recommences!



Companion III. Recommended retail \$299.00.

Plays chess up to regular club level. Modern, elegant and with a powerful 16K programme that's hard to beat, even for skilled players. 17 playing levels include 9 casual, 6 club, one analysis and 1 problem solving level that will solve up to Mate-in-10. A great gift!



Leonardo. Recommended retail price \$999.00

The Ultimate Chess Computer! Full size board, handcrafted to a high standard. Easy to use. Leonardo knows instantly when you're trying a new gambit! Absolute state-of-the-art technology with 32 skill levels including special levels for tournament play, speed chess, analysis and problem solving up to Mate-in-20. A lifetime of enjoyment for dad and the whole family.

ALSO AVAILABLE - SAITEK INTELLIGENT GAMES!

Sensory Backgammon computer and Pro Bridge 100 - the world's leading computer technology brings you an exciting duo of games the family will enjoy. For beginners to occasional players, Saitek Intelligent Games are easy to use, with fast response and automatic scoring. The perfect Fathers Day gift. Recommended retail prices: Pro Bridge. 100... \$159.00 Sensory Backgammon... \$249.00

Distributed by Commodore Computer (N.Z.) Limited,
250 Forrest Hill Road, Forrest Hill, P.O. Box 33-847, Takapuna, Auckland, N.Z.
Telephone: (09) 410-9182 Fax: 410-9189

Available from:

Whangarei Searle Electronics Ph 482-445; Orewa Lodestar Computers Ph 83-120; Auckland Bars & Bartenders Ph 496-659 or 396-262; Computer Village Ph 734-022; Computer Calculator Centre Ph 790-326; Glendene Village Pharmacy Ph 836-9580; Millford Computers Ph 494-877; Personal Computer Store Ph 496-502; Smith & Caughy Ph 774-770; Software Plus Ph 762-667; The Computer Terminal Ph 419-0543; Waihi Computercare Ph 7552; Te Puke Phil Booth TV Audio Ph 37-882; Tokoroa Audio Hi Fi Ph 68-922; Rotorua Channel 5 Ph 89-164; Napier Data Stream Ph 56-195; Dannevirke Ebbett Electronics Ph 48-764; Wellington Computer Village Ph 737-430; Kirkcaldie & Stains Ph 725-899 or 725-900; Australasian Business Systems Ph 727-941; Kapiti Independent Business Machines Ph 88-277; Computer Experience Ph 736-777; Computer Village Lower Hutt Ph 693-313; Christchurch Computer Centre Ph 793-428; Computer Village Ph 65-072; Ballantynes Ph 797-400; Commodore & Computers Ph 796-259

25. Bg4?
 Black is probably lost after
 this. Correct is 25. ... Nxe4!
 with an unclear position.

| | | |
|-----|-------|-------|
| 26. | h3 | Bh5 |
| 27. | Rxc5! | dx5 |
| 28. | Ne6 | Nc4+ |
| 29. | Kd3 | Nxb2+ |
| 30. | Kc3 | Nd1+ |
| 31. | Kb3! | c4+ |
| 32. | Kb4! | c5+ |
| 33. | Kxc5 | Nc3 |
| 34. | Nxf4 | Nxe4+ |
| 35. | Kxc4 | Rc7+ |
| 36. | Kb4 | Bf3 |
| 37. | Ne6 | 1-0 |

CM Peter GREEN - IM Ortvin
 SARAPU, Dutch Defence:

| | | |
|-----|------|------|
| 1. | Nf3 | f5 |
| 2. | d4 | Nf6 |
| 3. | g3 | e6 |
| 4. | Bg2 | Be7 |
| 5. | O-O | O-O |
| 6. | c4 | Ne4 |
| 7. | Nbd2 | Bf6 |
| 8. | Qc2 | d5 |
| 9. | Ne5 | c6 |
| 10. | Ndf3 | Qe8 |
| 11. | Nd3 | Nd7 |
| 12. | Nfe5 | Kh8 |
| 13. | b3 | Nxe5 |
| 14. | Nxe5 | b6 |
| 15. | Ba3 | c5 |
| 16. | f3 | Bxe5 |
| 17. | dx5 | Ng5 |
| 18. | b4 | Bb7 |
| 19. | bxc5 | bxc5 |
| 20. | Bxc5 | Rf7 |
| 21. | h4 | Rc7 |
| 22. | Bd6 | Rxc4 |
| 23. | Qb3 | Qc6 |
| 24. | hxg5 | Rac8 |

WANTED TO BUY

CHESS BOOKS

| | | | |
|-----------|---|--------|-----------------|
| Libraries | - | single | copies |
| old | - | new | - any condition |

Good prices paid by

NZ CHESS SUPPLIES
 PO BOX 42090
 WAINUIOMATA

Tel: (04) 648 578)

| | | |
|-----|------|-------|
| 25. | Ba3 | Rc3 |
| 26. | Qb4 | a5 |
| 27. | Qd6 | Ba6 |
| 28. | Qxc6 | R8xc6 |
| 29. | Rfc1 | Bxe2 |
| 30. | Rxc3 | Rxc3 |
| 31. | Rc1 | Rxc1+ |
| 32. | Bxc1 | Kg8 |
| 33. | Kf2 | Bc4 |
| 34. | a3 | Kf7 |
| 35. | Bf1 | 1-0 |

COMPUTERS

COMPUTER CHESS UPDATE
 Contributed by G. Banks.

MASTER TITLE obtained by a MICRO!
 The FIDELITY MACH 3 (in its
 commercial form) obtained a US
 MASTER TITLE in the World Open at
 Philadelphia (JULY 1988).

Two versions of the program were
 entered - the 68020 (32 bit) and
 the 68000 (16 bit). The results
 were:

FIDELITY MACH 3 (68020)
 +27 -11 =10 (against opponents
 2195) Rating 2325
 FIDELITY MACH 3 (68000)
 +26 -15 =7 (against opponents
 2177) Rating 2265

Availability of the 68020 will not
 be announced until 1989, but the
 68000 should be available shortly
 if not already.

Here is one of the games from the
 tournament.

FIDELITY MACH 3 68000 - ORTEGA
(2159 US) 1.e4,c5; 2.Nf3,d6;
 3.d4,cd; 4.Nxd4,Nf6; 5.Nc3,a6;
 6.Bg5,e6; 7.f4,Be7; 8.Qf3,Nbd7;
 9.O-O-O,Qc7; 10.g4,h6; (Mach 3 is
 now out of book) 11.Bxf6,Bxf6
 (considered the best way of
 recapturing); 12.Kb1,Be7,
 13.Bg2,b5; 14.e5,d5; 15.Nxd5!! (a
 sacrifice with regain or greater
 gain of material within the
 computer's horizon is no sacrifice
 at all, but a combination. But a
 sacrifice for a positional
 advantage is a different matter
 altogether - especially for
 materialistic computers. Here MACH
 3 chooses to open up the centre
 for its R, Q and B, thus gaining
 the initiative and better long-
 term prospects)...ed; 16.Qxd5,Nb6;

(a critical moment for here Black
 loses the exchange and we must ask
 if that is necessary for, if so,
 White's sacrifice was not a
 sacrifice at all. The alternative
 is 16...Ra7; preserving material
 advantage, but careful study of
 the position and likely
 continuations reveal that White
 still has the upper hand).
 17.Qc6+,Qxc6; 18.Bxc6+,Bd7;
 19.Bxa8,Nxa8; 20.NE5,Bxf5; 21.gf,
 Bc5; 22.Rhf1,Nb6; 23.Rf3,Ke7;
 24.Rg3,Rh7 (is there anything
 better?); 25.Rxg7!,Rh8; 26.Rg3,
 Rc8; 27.Rh3,Nc4; 28.Rxh6,Be3;
 29.Rxa6,Nd2+; 30.Kal,Rxc2; 31.f6+,
 ke8; 32.Ra8+,Kd7; 33.e6+!,fe; (If
 33...Kxe6; 34.Re8+,Kxf6; 35.Rxe3
 wins) 34.f7,Bd4; 35.Rd8+!,Kxd8;
 36.f8(Q)+,Kd7; 37.Qb4,e5; 38.fe,
 resigns.

The MACH 3 68020 scored 12½-
 9½ against USCF masters (2200-
 2399) while the MACH 3 68000
 scored 7½-6½. Each machine beat 2
 players in the 2300's!

Finally the top section of the
 latest rating list from HALLSWORTH
 (regarded by many as the world's
 leading independent authority on
 chess computers). The list
 includes only those machines that
 are currently available
 commercially.

- 1.MEPHISTO ROMA (32 bit) -
 2196 ELO (v.Humans 2042)
- 2.MEPHISTO DALLAS (32 bit) -
 2173 ELO (v. Humans 2116)
- 3.MEPHISTO ROMA (16 bit) -
 2139 ELO (v. Humans 1820)
- 4.MEPHISTO DALLAS (16 bit) -
 2138 ELO (v. Humans 2030)
- 5.FIDELITY MACH 2C+ -
 2113 ELO (v. Humans 2075)
- 6.MEPHISTO MONDIAL/DALLAS XL -
 2107 ELO (v. Humans 2079)
- 7.MEPHISTO AMSTERDAM -
 2090 ELO (v. Humans 2101)
- 8.MEPHISTO MEGA 6 -
 2084 ELO (v. Humans 2110)
- 9.FIDELITY MACH 2B -
 2072 ELO (v. Humans 1954)
- 10.MEPHISTO MM4 (5mhz) -
 2064 ELO (v. Humans 2054)
- 11.KASPAROV LEONARDO ANALYST(8mhz)
 2048 ELO (v. Humans 1965)
- 12.NOVAG SUPER EXPERT/FORTE (6mhz)
 2047 ELO (v. Humans 2076)

- 13.MEPHISTO MONTE CARLO -
 2045 ELO (v. Humans unknown)
- 14.PSION ATARI (8mhz) -
 2042 ELO (v. Humans 2071)
- 15.NOVAG SUPER EXPERT/FORTE (5mhz)
 2019 ELO (v. Humans 2038)

FLOPPY CHESS

By BILL COX

FURTHER along the pages will be
 found an advertisement from
 Enlightenment Inc., an American
 company which produces chess
 programs for computers.

They kindly sent three samples
 of their product to the magazine
 and if you own an Apple II
 [+e], Commodore 64/128 or IBM
 compatible then these could be
 for you.

So far I've had little time to
 do more than flip through the
 discs, but what I have seen is
 pretty impressive.

Starting with PAUL WHITEHEAD
 TEACHES CHESS, this is a set of
 two double-sided floppies and a
 double-sided chart covering all
 aspects of chess from the basic
 rules, position and moves of the
 men. Openings, endgames,
 tactics, strategies are all
 covered and can be accessed by
 hitting the cursor key or typing
 in the number of the section or
 game that you want to watch. You
 can flip back and forth, watching
 the moves on the [small] diagram.
 Multiple choices are provided so
 that it is possible to see how a
 certain move leads to disaster -
 or victory.

Included in the program is the
 COFFEEHOUSE CHESS MONSTER, a game
 playing program that can be
 called up easily. It will pick
 up the position of the tutorial
 you were looking at without any
 need to set up the board, so it's
 possible to play your own moves.
 The program just as easily flips
 back to the tutorial position.

This is a great set of programs
 for young or beginning players.

Paul Whitehead was US Junior
 Champion at age 17 and US Open
 Champion.

JEREMY SILMAN'S GUIDE TO CHESS OPENINGS will interest more experienced players. With 60 hours of instruction and more than 500 Kb of moves it is a good analytical tool, for once again the Coffeehouse Chess Monster is included.

This has three double-sided discs and two charts. Play the White pieces and Play the Black pieces. The 'White' charts cover 1. e4 - French, Sicilian, Caro-Kann, Firc, Modern, Alekhine's; Centre Counter and others; Petroff's and others; a huge section on the Ruy Lopez; Philidor's and Latvian Gambit.

The 'Black' covers the Sicilian in greater depth, Accelerated Dragon [inc Maroczy Bind]; Closed; Alapin Variation; Wing Gambit; and 1. d4, Queen pawn; 1. c4 English; 1. Nf3; Bird's; Larsen Attack; Benko's; Sokolosky's; Dunst; and others.

Again, it is easy to flip to the Coffeehouse Chess Monster with the tutorial position ready set up and take it from there. It is worth noting that the Monster gained a first place in an open US computer contest. It has player v player; computer v player and computer v computer, with the ability to save games to

disc and retrieve them. It will initialise a disc as well.

50 ANNOTATED CHESS CLASSICS covers eight eras of chess on two double-sided discs, but no Monster.

Games range from McDonnell - LaBourdonnais to Karpov-Kasparov and as a way of studying games is a great success. Apart from just flipping the moves, the program offers alternative moves so you can see what would have happened if a move different to the game move had been played.

This also comes with a chart and games are easily accessed by way of the guide numbers.

Other programs available are specialised opening theory on the King's Indian and the Najdorf Sicilian.

Apart from the fact that all these are available for the most popular home computers, the ease of operation makes them a winner.

Anybody interested can get more details by dropping the company a line - address on the advert - their response is fast!

CONTEMPORARY COMPUTER GAMES

B N CARTHEW LTD
PO BOX 611, CAMBRIDGE
PH: (071) 277-948

SOLE IMPORTERS, AND DISTRIBUTORS OF THE

"C.X.G." & "CONCHESS" CHESS COMPUTERS

- * We have a full range of Chess Computers, with a choice of sixteen models, all having various levels of play. Suitable for beginners through to experienced club players.
- * A proven way to improve your game, and always "on call" for a great game.
- * The new C.X.G. Range is proving to be one of the best programmed brands on today's world market. They are competitively priced to suit all Chess Players' pockets, and ambitions.
- * Priced from \$100 - \$1,200.
- * All our Chess Computers carry a one year guarantee, and full back up service.
- * Retail Stockists are required in selected areas. Good quality, in demand products which can considerably increase your turnover, and also help to promote Chess in your area.
- * Club enquiries welcome.
- * Send now for our free colour Brochure, and your nearest stockist to:-

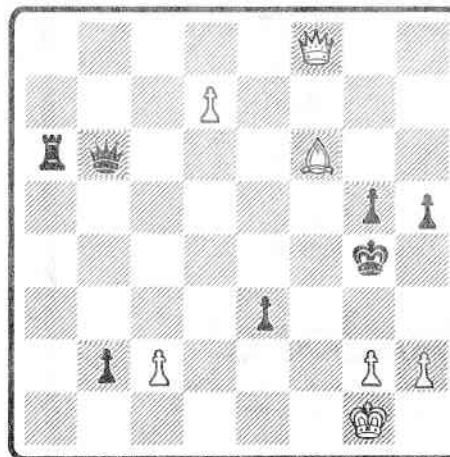
B.N. Carthew Ltd,
P.O. Box 611,
Cambridge.
Ph. (071) 277948

STUDIES

By EMIL MELNICHENKO

HERE, an idea conceived nearly a century ago is developed and embellished by a young Polish composer recognized for his successes in International tournaments.

J RUSINEK. 1st/2nd prize, Szachy 1971.



A quick glance at the position shows that not only is White the exchange down, but his/her back rank is vulnerable to obvious

mating threats such as Ra1, b1Q or e2+ and e1Q. Therefore:

1. h3+
But not 1. Bxb2? e2+ 2. Qf2 e1Q mate; nor 1. g3? Ra1+ 2. Kg2 Qc6 mate.

1. ... Kh4
If 1. ... Kf4 2. Bxb2+ Ke4 3. Qf3 mates prettily. After 1. ... Kf5 2. Bxb2+ Kg6 3. d8Q wins as 3. ... e2+ 4. Qxb6 is check, while 1. ... Kg3 2. Be5+ Kh4 3. Kh2 with mate on g3 is one way of winning.

2. Be5
The try 2. Bxg5? Kxg5 3. d8Q+ Qxd8 4. Qxd8+ Rf6 5. h4+ [5. Qb8/d1 e2] Kg6 only draws and 2. d8Q? e2+ 3. Qxb6 [3. Kh2 Qg1+] 4. Kxg1 e1Q+ 5. Kh2 Qg3 mates! 3. ... e1Q+ 4. Kh2 Qg3+ 5. Kh1 Ra1+ 6. Qg1 Rxg1+ and 7. ... b1Q mate is worse. Of course, 2. Bxb2? e2+ 3. Kh2 Qc7+ 4. Kg1 e1Q+ and Black triumphs again. White's deceptively quiet 2. Be5 prepares mate on g3 when the king is on h2, prevents Black's Qc7+, opens the f file and even threatens 3. g3+ with the mating 4. Qf5+ to follow.

2. ... e2+
Best. If, for instance, 2. ... b1Q+ 3. Kh2 Qg1+ 4. Kxg1 e3+ 5. Kh2 Qg1+ 6. Kxg1 e1Q+ 7. Qf1 Qxe5 8. Qf2+ Qg3 9. Qd4+ wins prosaically.

3. Kh2
Naturally not 3. Qf2+? Qxf2 4. Kxf2 e1Q+ 5. Kxe1 b1Q+.
3. ... Qg1+



COMMODORE COMPUTER (NZ) LTD KASPAROV CHESS COMPUTERS

Prices effective 01 July 1988

| Description | Price (inc GST) |
|--------------------------------------------|-----------------|
| Pocket Chess | 79.00 |
| Express 16K | 199.00 |
| Mark 10 | 149.00 |
| Mark 12 | 199.00 |
| Companion III | 299.00 |
| Turbo 16K | 399.00 |
| Turbo King | 599.00 |
| Astral | 399.00 |
| Stratos | 799.00 |
| Leonardo | 999.00 |
| Maestro H Module (upgrade for Leonardo) | 165.00 |
| Analyst Module (upgrade for Leonardo) | 315.00 |
| Pro Bridge 100 | 159.00 |
| Sensory Backgammon | 249.00 |



250 Forrest Hill Road, Forrest Hill, P.O. Box 33-847, Takapuna, Auckland, N.Z.
Telex: NZ CBM 63118. Telephone: (09) 410-9182. Fax: 410-9189.

A shot! The stunning, even if only, way to stop the mate on g3.
4. Kxg1 Ra1+
Or 4. ... e1Q+ 5. Qf1 Qxf1+ [5. ... b1Q 6. g3+ wins while 5. ... Qxe5 6. Qf2+ Qg3 7. Qd4+ Qg4 (7. ... Qf4 8. Qxf4+ and 9. d8Q+ mates) 8. Kh2 Qxd4 (8. ... Ra3 9. d8Q wins) 9. g3 mate!] 6. Kh2! Qf2 7. d8Q Ra4 [7. ... Ra3 8. Qd4+ wins] 8. Qd2 and mate is inevitable.
5. Kh2 Rh1+
Black's second sacrifice to decoy the White king.
6. Kxh1 e1Q+
7. Qf1
Tit for tat! Not 7. Kh2? Qxe5+ and black wins. White's queen sacrifice has lured the black queen away from e5.
7. ... Qxf1
[7. ... Qxe5 8. Qf2+ Qg3 9. Qd4+ Qg4 10. h3xg4 b1Q+ 11. Qg1 Qb8 12. Qh2+ wins]
8. Kh2 Qf2

Black has prevented the familiar mate on g3, but now what?
9. d8Q Qg1+
Black's second queen sacrifice and third decoy to lure the king from h2! If 9. ... b1Q 10. Qd4+ mates.
10. Kxg1 b1Q+
11. Qd1
White lightning strikes twice! This queen offer, coming after so many royal casualties, is the most piquant of all. However, after 11. Kh2? Qh1+ 12. Kxh1 is stalemate after blinking twice!

while 11. Kf2? Qe1+ draws similarly.
11. ... Qxd1+
12. Kh2 wins after 12. ... g4 13. Bf6 mate, or 12. ... Qe2 13. Bg3 mate.

A romantic study with sharp play featuring no less than four mutual queen sacrifices in a natural and gamelike setting. Reminiscent of Henry VIII with so many beheadings!

OVERSEAS NEWS

REYKJAVIK

| | 1 | 2 | 3 | 4 | 5 | 6 | 7 | 8 | 9 | 0 | 1 | 2 | 3 | 4 | 5 | 6 | 7 | 8 | | |
|--------------|-----|---|------|---|---|---|---|---|---|---|---|---|---|---|---|---|---|---|----|-----|
| 1 Kasparov | USR | G | 2760 | x | ½ | ½ | 1 | 1 | ½ | 1 | 1 | ½ | ½ | 1 | 0 | ½ | ½ | ½ | 1 | 11 |
| 2 Belyavsky | USR | G | 2665 | ½ | x | 1 | ½ | 1 | 0 | ½ | ½ | 1 | ½ | ½ | ½ | 1 | 0 | ½ | 1 | 10½ |
| 3 Tal | USR | G | 2610 | ½ | 0 | x | ½ | ½ | ½ | ½ | 1 | ½ | 1 | 1 | ½ | 1 | 1 | ½ | 10 | |
| 4 Hjartarson | ICE | G | 2610 | 0 | ½ | ½ | x | ½ | ½ | ½ | 1 | ½ | ½ | 0 | 1 | ½ | 0 | 1 | 1 | 9½ |
| 5 Ehlvest | USR | G | 2580 | 0 | 0 | ½ | ½ | x | ½ | 0 | 1 | ½ | 1 | ½ | ½ | 1 | ½ | 1 | 9½ | |
| 6 Yusupov | USR | G | 2620 | ½ | 1 | ½ | ½ | ½ | x | ½ | ½ | ½ | ½ | ½ | 1 | ½ | ½ | 1 | 9 | |
| 7 Sax | HUN | G | 2600 | 0 | ½ | ½ | ½ | 1 | ½ | x | ½ | ½ | ½ | ½ | 1 | ½ | ½ | 1 | 9 | |
| 8 Timman | NLD | G | 2660 | 0 | ½ | 0 | 0 | 0 | ½ | ½ | x | ½ | ½ | 1 | 1 | 1 | ½ | ½ | 1 | 9 |
| 9 Nunn | ENG | G | 2620 | ½ | 0 | ½ | ½ | ½ | ½ | ½ | ½ | x | ½ | ½ | ½ | ½ | ½ | 1 | 1 | 9 |
| 10 Speelman | ENG | G | 2645 | ½ | ½ | 0 | ½ | 0 | ½ | ½ | ½ | ½ | x | ½ | ½ | ½ | 1 | ½ | 1 | 8½ |
| 11 Andersson | SWE | G | 2625 | 0 | ½ | ½ | ½ | ½ | ½ | ½ | 0 | ½ | ½ | x | 1 | ½ | ½ | ½ | 1 | 8½ |
| 12 Sokolov | USR | G | 2600 | 1 | ½ | ½ | 1 | ½ | 0 | 0 | 0 | ½ | ½ | 0 | x | 0 | ½ | ½ | 1 | 8 |
| 13 Nikolic | YUG | G | 2585 | ½ | 0 | ½ | 0 | 0 | 1 | ½ | 0 | ½ | ½ | 1 | x | ½ | ½ | ½ | 1 | 8 |
| 14 Ribli | HUN | G | 2630 | ½ | ½ | 0 | ½ | ½ | ½ | ½ | 0 | ½ | ½ | ½ | ½ | x | ½ | 0 | 1 | 7½ |
| 15 Portisch | HUN | G | 2630 | ½ | 0 | 0 | 1 | ½ | ½ | 1 | ½ | 0 | ½ | ½ | ½ | ½ | x | ½ | 0 | 7 |
| 16 Spassky | FRA | G | 2560 | ½ | 1 | ½ | 0 | 0 | 0 | 0 | 0 | ½ | ½ | ½ | ½ | ½ | x | ½ | 0 | 7 |
| 17 Korchnoi | SWI | G | 2595 | 0 | ½ | ½ | 0 | ½ | ½ | 0 | 0 | 0 | 0 | 0 | 1 | 1 | ½ | x | 1 | 6½ |
| 18 Petursson | ICE | G | 2530 | ½ | 0 | ½ | 0 | 0 | ½ | ½ | 0 | 1 | ½ | 0 | 0 | 1 | 1 | 0 | x | 6 |

Gary Kasparov scored his second World Cup victory at Reykjavik in October but he had to come from behind to do so. A blunder in the 7th round against Andrei Sokolov left him a half point off the pace for the next seven rounds. The early leader was Mikhail Tal but Alexander Belyavsky and Jaan Ehlvest caught him in the middle of the tournament. Then, in a vital 14th round duel, Tal lost to Belyavsky who took the sole

lead, a half point ahead of Ehlvest and Kasparov. The latter tied the lead for the first time in round 15 with his second successive win and then beat Ehlvest while Belyavsky defeated John Nunn in round 16.

In a dramatic last round Kasparov, with the white pieces against Predrag Nikolic, was held to a draw. For the purpose of Grand Prix points this was enough to ensure shared first place even if Belyavsky won since Kasparov had drawn with local player Petursson whose scores would not count for the Grand Prix. Belyavsky, however, played nervously with the black pieces against the winless Boris Spassky - and lost!

The tournament was dominated throughout by the Soviet contingent with only Sokolov failing to take a top placing. Ehlvest followed up his clear third place at Belfast with another solid effort here. The only non-Soviet player to feature in the top five was Johann Hjartarson who started dismally with 2/6 but gradually worked his way through the field to share fourth place.

After three World Cup tournaments Belyavsky leads the grand prix standings with 60½ points. His lead looks likely to be temporary, however, as Kasparov on 56½ and Karpov on 54½ have each only played two events. Next are Speelman 51 (3 tournaments), Andersson 49½ (3), Sokolov 48 (3), Ehlvest 45 (2) and Nunn 42½ (2).

NUNN - PORTISCH, Ruy Lopez:

1 e4 e5 2 Nf3 Nc6 3 Bb5 a6 4 Ba4 d6 5 Bxc6+ bxc6 6 d4 exd4 7 Qxd4 Nf6 8 0-0 Be7 9 Nc3 0-0 10 Re1 Bg4 11 Qd3 Bxf3 12 Qxf3 Nd7 13 b3 Bf6 14 Bb2 Re8 15 Rad1 Re6 16 Qh3 Qe8 17 f4 Rd8 18 Qe3 Nb6 19 e5 dxe5 20 f5 Rxd1 21 Rxd1 Re7 22 Ne4 Rd7 23 Nxf6+ gxf6 24 Re1 Qd8 25 Qe4 Nd5 26 Qg4+ Kh8 27 Bc1 Qf8 28 c4 Nb4 29 Qh4 Qd6 30 Qh6 Rd8 31 h3 c5? [Overlooking a mating combination; 31...Rg8 was the only move] 32 Re4 Rg8 33 Qxh7+!, 1 - 0.

ANDERSSON - SOKOLOV, Queen's Gambit:

1 Nf3 d5 2 d4 Nf6 3 c4 e6 4 Nc3 Be7 5 Bg5 0-0 6 e3 Nbd7 7 Rcl c6 8 Bd3 a6 9 cxd5 exd5 10 Qc2 Re8 11 0-0 Nf8 12 Rfel Be6 13 a3 Nh5 14 Bxe7 Qxe7 15 Na4 Rad8 16 Nc5 Bc8 17 b4 Nf6 18 a4 Ne4 19 b5 axb5 20 axb5 Ng5 21 Nd2 Rd6 22 bxc6 bxc6 23 Ra1 Rh6 24 Nf1 Qf6 25 Ng3 Rh4 26 f4 Nge6 27 Nxe6 Qxe6 28 Racl Bd7 29 Bf5 Qf6 30 Bxd7 Nxd7 31 Qf5 Re6 32 Qxf6 Rxf6 33 Rc3 Kf8 34 Ra1 Ke7 35 Ra7 g6 36 Rc7 Re6 37 R7xc6 Rxc6 38 Rxc6 Nf6 39 h3 Nh5 40 Ne2 Ng7, 1 - 0.

TAL - SPEELMAN, Pirc Defence:

1 e4 d6 2 d4 g6 3 Nf3 Bg7 4 Be2 Nf6 5 Nc3 0-0 6 0-0 c5 7 d5 Na6 8 Re1 Nc7 9 Bf4 b5 10 Nxb5 Nxe4 11 Nxc7 Qxc7 12 Bc4 Nf6 13 h3 Re8 14 Rb1 a5 15 Qd2 Qb6 16 Re3 Ba6 17 Bxa6 Qxa6 18 Rbel Kf8 19 Ng5 Qb7 20 c4 Qb4 21 Qe2 h6 22 Nxf7 Kxf7 23 Rb3 Qa4 24 Qe6+ Kf8 25 Rb7 Qxc4 26 Bxd6 Ng8 27 Re3 Bf6 28 Rf3 Kg7 29 Bxe7 Rxe7 30 Rxe7+ Nxe7 31 Qxf6+ Kg8 32 Qf7+ Kh8 33 Qxe7 Qxd5 34 Rf7, 1 - 0.

PETURSSON - PORTISCH, Modern Benoni:

1 d4 Nf6 2 c4 e6 3 Nf3 c5 4 d5 exd5 5 cxd5 d6 6 Nc3 g6 7 Bf4 a6 8 e4 b5 9 Qe2 Nh5 10 Bg5 f6 11 Be3 Nbd7 12 g4 Ng7 13 h4 Nb6 14 Nd2 b4 15 Nd1 h5 16 gxf5 Nxf5 17 Rg1 Kf7 18 f4 f5 19 Qg2 Rh6 20 Nf2 Qf6 21 0-0-0 Bg7 22 Nd3 Bb7 23 Be2 Rg8 24 e5 Qd8 25 Bf3 Qa8 26 Bxh5 gxf5 27 Qg5 Nxd5 28 Qxf5+ Ke8 29 exd6 Qc8 30 Qe4+ Kf8 31 Bxc5 Kf7 32 Nc4 Re6 33 Qf5+ Nf6 34 Qg6+, 1 - 0.

EHLVEST - NIKOLIC, Ruy Lopez:

1 e4 e5 2 Nf3 Nc6 3 Bb5 a6 4 Ba4 Nf6 5 0-0 Be7 6 Re1 b5 7 Bb3 0-0 8 c3 d6 9 h3 a5 10 d3 a4 11 Bc2 Bd7 12 Nbd2 Qb8 13 d4 Qb7 14 Nf1 exd4 15 cxd4 Nb4 16 Bb1 Rad8 17 Ng3 Rfe8 18 Bd2 Na6 19 e5 dxe5 20 dxe5 Nd5 21 Ng5 h6 22 Qc2 Bxg5 23 Qh7+ Kf8 24 e6 fxe6 25 Bxg5 hxg5 26 Bg6 Nf6 27 Qh8+ Ng8 28 Bh7 Rb8 29 Nf5, 1 - 0.

* * *

TILBURG

Anatoly Karpov turned in a top class performance in September when he won the 12th Interpolis tournament - a category 16 double round-robin. At the half-way

stage Karpov shared the lead with Nigel Short, both having scored 4½/7; next were Hübner, Nikolic and Portisch on 3½. After that, however, there was only one player in the race as Karpov amassed 6/7 in the second half to finish 2 points clear of Short.

Scores: 1 GM Karpov (USR) 10½/14; 2 GM Short (ENG) 8½; 3-5 GM Hjartarson (ICE), GM Nikolic (YUG) & GM Timman (NLD) 7; 6-7 GM Hübner (BRD) & GM van der Wiel (NLD) 5½; 8 GM Portisch (HUN) 5.

SHORT - HUBNER, Petroff Defence:

1 e4 e5 2 Nf3 Nf6 3 Nxe5 d6 4 Nf3 Nxe4 5 d4 d5 6 Bd3 Bd6 7 0-0 0-0 8 c4 c6 9 Nc3 Nxc3 10 bxc3 dxc4 11 Bxc4 Bg4 12 Qd3 Nd7 13 Ng5 Nf6 14 h3 Bh5 15 f4 h6 16 g4 hxg5 17 fxg5 Nxc4 18 hxg4 Qd7 19 gxh5 Qg4+ 20 Kf2 Rae8 21 Rg1 Qh4+ 22 Kg2 b5 23 Bb3 c5 24 Rh1, 1 - 0.

SHORT - TIMMAN, Ruy Lopez:

1 e4 e5 2 Nf3 Nc6 3 Bb5 a6 4 Ba4 Nf6 5 0-0 Nxe4 6 d4 b5 7 Bb3 d5 8 dxe5 Be6 9 c3 Bc5 10 Nbd2 0-0 11 Bc2 Bf5 12 Nb3 Bg6 13 Bf4 Bb6 14 a4 Qd7 15 axb5 axb5 16 Rxa8 Rxa8 17 Nfd4 b4 18 Bd3 bxc3 19 Bb5 Nxf2 20 Rxf2 Nxd4 21 Bxd7 Nxb3 22 bxc3 Ra1 23 Qxa1 Nxa1 24 Bc6 Be4 25 c4 Nc2 26 Bd2 Na3 27 Bxd5 Bxd5 28 cxd5 Nc4 29 Bc3 Kf8 30 g4 Ke8 31 h4 g6 32 Kg2 Bxf2 33 Kxf2 Nb6 34 d6 c6 35 Kf3 Kd7 36 Bd4 Nd5 37 h5 Ke6 38 Ke4 Nb4 39 Bc3 Nd5 40 Bd4 Nb4 41 Bc3 Nd5, ½ - ½.

NIKOLIC - HUBNER, Slav Defence:

1 d4 d5 2 c4 dxc4 3 Nf3 Nf6 4 Nc3 c6 5 a4 Bg4 6 Ne5 Bh5 7 h3 e6 8 g4 Bg6 9 Bg2 Bb4 10 0-0 Nd5 11 Na2 Be7 12 e4 Nb4 13 Nxb4 Bxb4 14 f4 f6 15 Nxc6 hxg6 16 Be3 Nd7 17 Qc2 Qe7 18 Qxc4 c5 19 Racl cxd4 20 Qxd4 Ba5 21 Qd3 a6 22 Rfd1 Rd8 23 Qb3 Nb8 24 Rxd8+ Bxd8 25 e5 fxe5 26 fxe5 Kf7 27 Bc5 Qd7 28 Rd1 Qc8 29 Bd6 Nc6 30 Be4 Rh6 31 g5 Rh5 32 Rf1+ Kg8 33 Rf8+ Kh7 34 Bxg6+ Kxg6 35 Qd3+, 1 - 0.

TIMMAN - HUBNER, French Winawer:

1 e4 e6 2 d4 d5 3 Nc3 Bb4 4 e5 c5 5 a3 Bxc3+ 6 bxc3 Ne7 7 Nf3 Qa5 8 Bd2 Nbc6 9 Be2 cxd4 10 cxd4 Qa4 11 Rb1 Nxd4 12 Bd3 Nec6 13 Bb4 Nf5 14 Qcl b6 15 c4 Nxb4 16 Rxb4 Qc6 17 0-0-0 18 Qf4 Bb7 19 Bxf5 exf5 20 Nd4 Qc5 21 Nxf5 Bc8 22 Nxc7 Kxc7 23 Qg5+ Kh8 24 Qf6+ Kg8 25 Qg5+ Kh8 26 Qf6+ Kg8 27 Rb3 Re8 28 Rg3+ Kf8 29 Rg7 Re7 30 e6 Bxe6 31 Rxf7, 1 - 0.

* * *

DDR vs BRD

Since the post Second World War partition of Germany the only meetings between West and East have been a few occasions at Olympiads - and these not for many years as East Germany has not competed at an Olympiad since 1972. Their match at Potsdam in September was thus quite a historical occasion.

The West German team was well below strength, lacking Hübner, Lobron, Pflieger and Kindermann. Nevertheless they only lost the four-round series by the narrow margin of 13:11. The East German team comprised Uhlmann, Bönsch, Knaak, Vogt, Pähntz and Espig.

UPPER HUTT CHESS CLUB

association continue!

GM LABOUR WEEKEND TOURNAMENT By Chris BELL

AMERICANS have given us many abbreviations and acronyms, but few could be as welcome as "GM" to append to the name of a chess tournament. Upper Hutt is delighted to have on board General Motors (NZ) Limited as its new sponsor. Long may the

Entries, numbering 27 (up 2 on 1987!), ranged from Taumarunui to Christchurch, easily the widest geographical spread we have had. Strongest of the 'foreigners' were Michael Freeman and Peter McKenzie in the A grade and Michael Schwass in the B grade. Notable omissions were last year's joint winners Russel Dive (exams) and Jonathan Sarfati (overseas). Exams also prevented

1ST LATVIAN GAMBIT

OPEN CHESS TOURNAMENT



VENUE: Pakuranga Cultural Centre, 13 Reeves Rd, Pakuranga, AUCKLAND.

DATE: Saturday 18th & Sunday 19th February, 1989.

FORMAT: 7 Round swiss with a time control of 1 hour per player to complete the game.

| TIMETABLE: | SATURDAY 18th FEBRUARY | SUNDAY 19th FEBRUARY |
|------------|------------------------|----------------------|
| | R1 9.00am - 11.00am | R5 9.00am - 11.00am |
| | R2 11.30am - 1.30pm | R6 11.30am - 1.30pm |
| | R3 2.30pm - 4.30pm | R7 2.30pm - 4.30pm |
| | R4 6.00pm - 8.00pm | |

PRIZE FUND: Total prize fund totals \$2,500 divided as follows:

| | |
|-----|-------|
| 1st | \$500 |
| 2nd | \$400 |
| 3rd | \$250 |
| 4th | \$150 |
| 5th | \$100 |

PLUS: 4 grade prizes of \$75
PLUS: Youth prize (best result for under 20 year olds) divided as follows: 1st \$125; 2nd \$75 & 3rd \$50
PLUS: Latvian Gambit all-comer prize. Chess computer valued at \$500 to the contestant who scores a win against the highest elo rated player using the Latvian Gambit. (see overleaf)
PLUS: \$50 computer prize to the highest scoring computer if at least two computers entries received. NB computer entries will not be eligible for any major prizes.

RATING: This is an unrated event.

REFRESHMENTS: A canteen will be operating during the tournament providing a good range of refreshments.

ACCOMMODATION: Available at the nearby Pakuranga Motor Lodge, 100 Pakuranga Rd, Pakuranga.

SMOKING: Fire regulations do not permit smoking in the playing room.

ENTRY FEES: \$20 if postmarked by 11th February.
 \$25 if postmarked after that date.
 Late entries will be accepted up to 9am on Saturday 18th
 Players are asked to report by 8.45am on Saturday.

The Latvian gambit also known as the Greco Counter-Gambit was recommended over 300 years ago by Greco. The opening moves of the Gambit; 1. e4 e5 2. Nf3 f5 represents a violent attempt to seize the initiative by Black. The tournament offers a substantial prize of a chess computer valued at \$500 to the contestant who scores a win against the highest elo rated player using this gambit. We hope that you will take up the challenge! This prize is being co-sponsored by NZ Chess Supplies.

Anthony Ker's participation. The one Olympian who did play was Lev Aptekar.

Round One followed the form book except that Zyg Frankel took a half point off Freeman and Paul Tuffery did the same to Arthur Pomeroy. In the first game a mutual Stonewall formation stifled all the 'line' pieces and the four knights decided to make a speedy exit. In the second, both kings were left without any pawn cover and with most of the heavy artillery left neither player could risk an attack.

In Round Two, Aptekar won against McKenzie, after adjourning with two connected passed pawns, and Peter Hawkes, using Bird's Defence for the second time, survived Leonard McLaren's attack to join Aptekar on 2/2. Martin Sims (UH) picked up the prize for the best combination in his game with Charles Ker (despite the fact that the combination should have been good for a draw at best).

When the leaders met in Round Three, Aptekar won a pawn from Hawkes, but then blundered a piece almost immediately. Freeman made up ground by beating Pomeroy. Sims fought for more than seven hours to draw a N & P's endgame against McLaren. McKenzie overcame Peter van Dijk's patent, the Blackmar-Diemer Gambit, and a faulty clock (!) to recover his momentum.

Round Four brought Aptekar into contention again as he beat Pomeroy and Hawkes-Freeman and McKenzie-McLaren were both drawn, the latter game being arguably the most interesting of the tournament.

Going into Round Five, the pairings were Hawkes (3.5) Vs McKenzie (2.5) and Freeman (3) Vs Aptekar (3). Hawkes won in just 14 moves as McKenzie missed a positionally advantageous line, grabbing a pawn instead. As a result, Aptekar and Freeman agreed a draw soon after.

Final placings were: 1. Hawkes 4.5; 2-3. Freeman, Aptekar 3.5; 4-5 McLaren, Frankel 3; 6-7.

McKenzie, Pomeroy 2.5; 8-9 Sims, Ker 2; 10. van Dijk 1.5; 11-12. P Tuffery, Jonathan Adams 1.

And so, yet another new name was added to the trophy. Peter, I think, will count himself rather lucky, but one cannot criticise a player for capitalising on his opponents' mistakes. Peter has performed at a consistently high level for many years now and we wish him every success in the 1988 Congress.

In the B Grade, there was a marked difference in playing strength between the top and bottom players - probably reason

enough to have created a C Grade. However, competition amongst the top four was keen with Schwass eventually running out the winner on 4.5/5. Undoubtedly the critical game here was Schwass' win over Simon Grainger (second equal in this group last year) in round four. Defending a difficult position, Grainger erred just after the resumption, losing a vital pawn. Although David Lillis and Don Stracy both won in round five, Schwass also won against Dave Capper to retain his half point lead. Stracy was slightly unfortunate in that he was never drawn against the winner - an earlier draw with Grainger (which he should have won) proving costly.

Final placings were: 1. Schwass 4.5; 2-3 Lillis, Stracy 4; 4-7 Bill Ramsay, Monty Kirkman, Capper, Glen Sullivan 3; 8-10 Grainer, Marvin Jones, Stefan White 2.5; 11-13. Errol Tuffery, Clarrie Webber, Ricky Brewer 2; 14-15 Bernie Newman, Julian Teni 1.

This grade was not exactly replete with combinations. Jones beat Newman with a one-move queen sacrifice and Schwass set a trap for Ramsay's knight, so the prize went to Sullivan for the handling of his final attack against Teni.

As well as the 'combination' prizes there was an overall prize for the biggest upset and this went to Hawkes for the all-important game against

Aptekar. The prizes were in the form of meal tokens, redeemable at Pizza Hut. I know that they were used, as the expiry date was October 31!

The fund, apart from the tokens, amounted to \$555.

P McKenzie - L McLaren
Caro-Kann Defence.

| | | |
|-----|------|-------|
| 1. | e4 | c6 |
| 2. | d4 | d5 |
| 3. | exd5 | cxd5 |
| 4. | Bd3 | Nc6 |
| 5. | c3 | g6 |
| 6. | Nf3 | Bg7 |
| 7. | O-O | Nh6?! |
| 8. | Re1 | O-O |
| 9. | h3 | Kh8 |
| 10. | c4! | dxc4 |
| 11. | Bxc4 | Nf5 |
| 12. | d5 | Ncd4 |
| 13. | Nxd4 | Nxd4 |

| | | |
|-----------|-------|-------|
| 14. | Be3 | Nf5 |
| 15. | Nc3 | a6 |
| 16. | Qd2 | b5 |
| 17. | Bb3 | Bb7 |
| 18. | Rad1 | Rc8 |
| 19. | Ne4! | Nxe3 |
| 20. | Qxe3 | Bxb2 |
| 21. | Ng5 | Bf6! |
| 22. | Nxf7+ | Rxf7 |
| 23. | d6 | Rg7 |
| 24. | Be6?! | |
| [24. d7!? | | exd6 |
| 25. | Bxc8 | Bxc8 |
| 26. | Qe8+ | Qxe8 |
| 27. | Rxe8+ | Rg8 |
| 28. | Rxg8+ | Kxg8 |
| 29. | Rxd6 | Kf7 |
| 30. | Rc6 | Be6 |
| 31. | Rxa6 | Bd4 |
| 32. | Rd6 | Bc3 |
| 33. | Rc6 | b4 |
| 34. | a3 | Kf6 |
| 35. | axb4 | Bxb4 |
| 36. | Rc7 | DRAWN |

WHEN FIDE President Campomanes was visiting NZ, he and Gordon Chamley played the following game in Christchurch with that city's giant set. Not easy, since the board was not properly laid out!

Campomanes - Chamley
Campo-Kann:

| | | |
|------------------------------------------------------|------|------|
| 1. | e4 | c6 |
| 2. | d4 | d6 |
| [... d5 is the Caro-Kann, ... d6 is the Campo-Kann!] | | |
| 3. | Nc3 | e5 |
| 4. | Nf3 | Qc7 |
| 5. | Be2 | Nf6 |
| 6. | Bg5 | Bg4 |
| 7. | Qd3 | Nbd7 |
| 8. | O-O | Be7 |
| 9. | Rad1 | O-O |
| 10. | dx | dx |

Draw agreed!

AYATOLLAH RULES CHESS IN ORDER

IRAN's spiritual leader Ayatollah Ruhollah Khomeini has ruled that chess is acceptable under Islam, so long as no gambling is involved. The Iranian news agency said the Ayatollah also approved trading in musical instruments, "provided they are not intended for ignoble purposes or uses counter to religious ethics."

From the Dominion, September 12.

SUPPORT NEW ZEALAND CHESS

CANTERBURY CC meets 7.30pm Wednesdays at the clubrooms, 227 Bealey Avenue. President Murray SIM, phone 885-113; Secretary Owen Thomson, phone 519-351. Club Rooms Phone (03) 663-935.
NELSON CC meets 7.30pm Thursdays at 2 Shakespeare Walk. Contact - Dan Doljes, 89827 or Denis Boyce, Motoek 87985. Visitors Welcome.

OTAGO CC meets 7.30pm Wednesdays and Saturdays at 7 Maitland Street, Dunedin. Phone 776-919 (clubrooms). Contact - Arthur PATTON, 26 College Street. Phone 877-414.

CLUB DIRECTORY

DETAILS of the advertising rates for this page can be found on the inside front cover.

AUCKLAND CHESS ASSOCIATION: Contacts - President, Robert GIBBONS, phone 864-324; Secretary Winsome STRETCH, 3/33 Sunnyhaven Avenue, Beach Haven, Auckland.

AUCKLAND CHESS CENTRE meets Mondays 7.15 pm (tournament and casual play) at 17 Cromwell Street, Mt Eden, phone 602-042. All chess players and visitors welcome.

DEVONPORT CHESS CLUB meets Tuesdays 7.30 pm in the Devonport Community House, Kerr St, Devonport. All Welcome. President: Philip HAIR 458-673; Secretary: David SHEAD 456-175. Postal address: 18 Grove Rd, Devonport.

HOWICK-PAKURANGA CC meets Tuesdays 7.30 pm at Howick Bridge Club, Howick Community Complex. Contact DERRICK LARK, 39 Minaret Drive Bucklands Beach, Auckland. Phone 5341114.

NORTH SHORE CC meets Wednesday 7.30pm (tournament and casual play) in the Northcote Community Centre, cnr College Road/ Ernie Mays St, Northcote. Postal address: PO Box 33-587, Takapuna. Contact - Peter STUART, phone 456-377. Visitors welcome.

PAPATOETOE CC meets Wednesdays, 7-11pm at St Georges Anglican Church Hall, Landscape Road, Papatoetoe. Contact G Banks 279 8170 or J McRae 278 4520 (evenings).

WAITEMATA CC meets 7.30pm Thursdays at Kelson West Community Centre, cnr Great North and Awaroa Roads. Postal address: PO Box 69-005, Glendene, Auckland 8. Contacts - Ben SAVAGE 8362713; Bob SMITH 818-4113.

HAMILTON CC meets Thursdays 7pm at the Hamilton Bowling Club, Pembroke Street, Hamilton. Contact Len WHITEHOUSE, 165 Galloway Street, Hamilton. Phone 69-582.

CAMBRIDGE CC meets Tuesday, 7 pm, at The Red Cross Hall, Milicich Place, Cambridge. Contact Brian CARTHEW, Box 611, Cambridge. Phone: (071) 277-948. Visitors welcome.

MOUNT MAUNGANUI CC meets 2 pm Tuesday and 7 pm Thursday at the Hillier Memorial Centre, Gloucester Road, Mt Maunganui. Contact Barney Sullivan, Ph: 56793.

TAUPO CC meets 7.30pm Mondays at "Lakewood", 5a Fletcher Street, Taupo. Contact: Joanne Rae, 83-285.

HASTINGS/HAVELOCK NORTH CC meets 7pm Wednesdays at the Library, Havelock North High School, Te Mata Road, Havelock North. Contact - Mike Earle phone 776-027.

PALMERSTON NORTH CC meets 7.30pm Tuesdays at the Palmerston North Intermediate School, Ferguson Street, Palmerston North. Contact - President JOHN CHAPMAN Phone 80337; Secretary Allen Blackburn Phone 64522.

CIVIC CC meets 7.30pm Tuesdays at Wellington Bridge Club, Moturoa Street, Thorndon. Contact - Brent SOUTHGATE, phone 757-604.

KAPITI CHESS CLUB meets Thursday, 7.30 pm Block E, Kapiti College, Margaret's Road, Raumati Beach. Contact Bill Cox Paraparaumu (058) 88589 or Tom Powell (058) 33105.

HUTT VALLEY CC meets Tuesdays at Hutt Valley Intermediate School, south end, entrance off Kauri Street. Contact - Nathan GOODHUE, 28 Waikare Avenue, Lower Hutt. Phone 696-420.

UPPER HUTT CC meets 7.45pm Mondays, at Fraser Crescent School Hall, Redwood Street, Upper Hutt. Contact Anton REID, 16 Hildreth Street, Upper Hutt. Phone 288-756.

NEW ZEALAND CORRESPONDENCE CHESS ASSOCIATION, PO Box 3278, Wellington. Local and overseas play. Contact - J W (Sandy) MAXWELL, phone 367-682.