

|                                    |  |         |   |
|------------------------------------|--|---------|---|
| +*****+                            |  | +*****+ |   |
| + New Zealand                      | + IN THIS ISSUE:                       | Page    | + |
| + CHES NEWS                        | + Player of the Year.....              | 3       | + |
| + =====                            | + Congress field.....                  | 4       | + |
| + =====                            | + Congress Hosts - Waikato             |         | + |
| + Chess League.....                | + Chess League.....                    | 5       | + |
| + Vol.1, No.7 December 11, 1958.   | + Remit on Master status....           | 6       | + |
| + Price, 1/- Subscription, 10/-    | + Sarapu: "Planning Variations"        | 7       | + |
| + per annum. Published monthly,    | + Schoolboys' games.....               | 9       | + |
| + except January. Registered at    | + Profiles of Candidates -             |         | + |
| + the C.P.O., Wellington, as a     | + No.1., Michael Tal.....              | 11      | + |
| + magazine. Registered as a news-  | + Algebraic notation.....              | 14      | + |
| + paper.                           | + Club for the blind and other         |         | + |
| + <u>Managing Editor:</u>          | + club news.....                       | 16      | + |
| + E.G.A.Frost,                     | + Wellington Labour weekend            |         | + |
| + 43 Wilton Rd.,                   | + games.....                           | 19      | + |
| + Wadestown, Wellington.           | + On Endgames.....                     | 20      | + |
| + Auckland representative:         | + Snippets.....                        | 21      | + |
| + B.Douglas,                       | + Problems.....                        | 22      | + |
| + 67 Martin Ave.,                  | + Tours Fund.....                      | 24      | + |
| + Mt Albert, Auckland.             | +*****+                                |         | + |
| +*****+                            | + NEXT ISSUE (FEBRUARY): 1959          |         | + |
| + Bound copies of 1958 "CN" are    | + Player of the Year; Full Congress    |         | + |
| + available, 5/- each.             | + report and games; One or two         |         | + |
| + We have score sheets, 3/- per    | + games from Australian Champion-      |         | + |
| + 100, also books of score         | + ship tournament in Sydney.           |         | + |
| + sheets, bound at the side,       | + <u>Note:</u> "CN" will not give full |         | + |
| + 1/9 each. Both including postage | + report on Sydney tourney. That       |         | + |
| + ORDER CHES BOOKS, MATERIALS      | + will appear in "Chess World."        |         | + |
| + OR MAGAZINE SUBSCRIPTIONS        | + SEASON'S GREETINGS TO EVERYONE.      |         | + |
| + THROUGH "CHES NEWS"              | +*****+                                |         | + |

Bound copies of 1958 "CN" are available, 5/- each. We have score sheets, 3/- per 100, also books of score sheets, bound at the side, 1/9 each. Both including postage

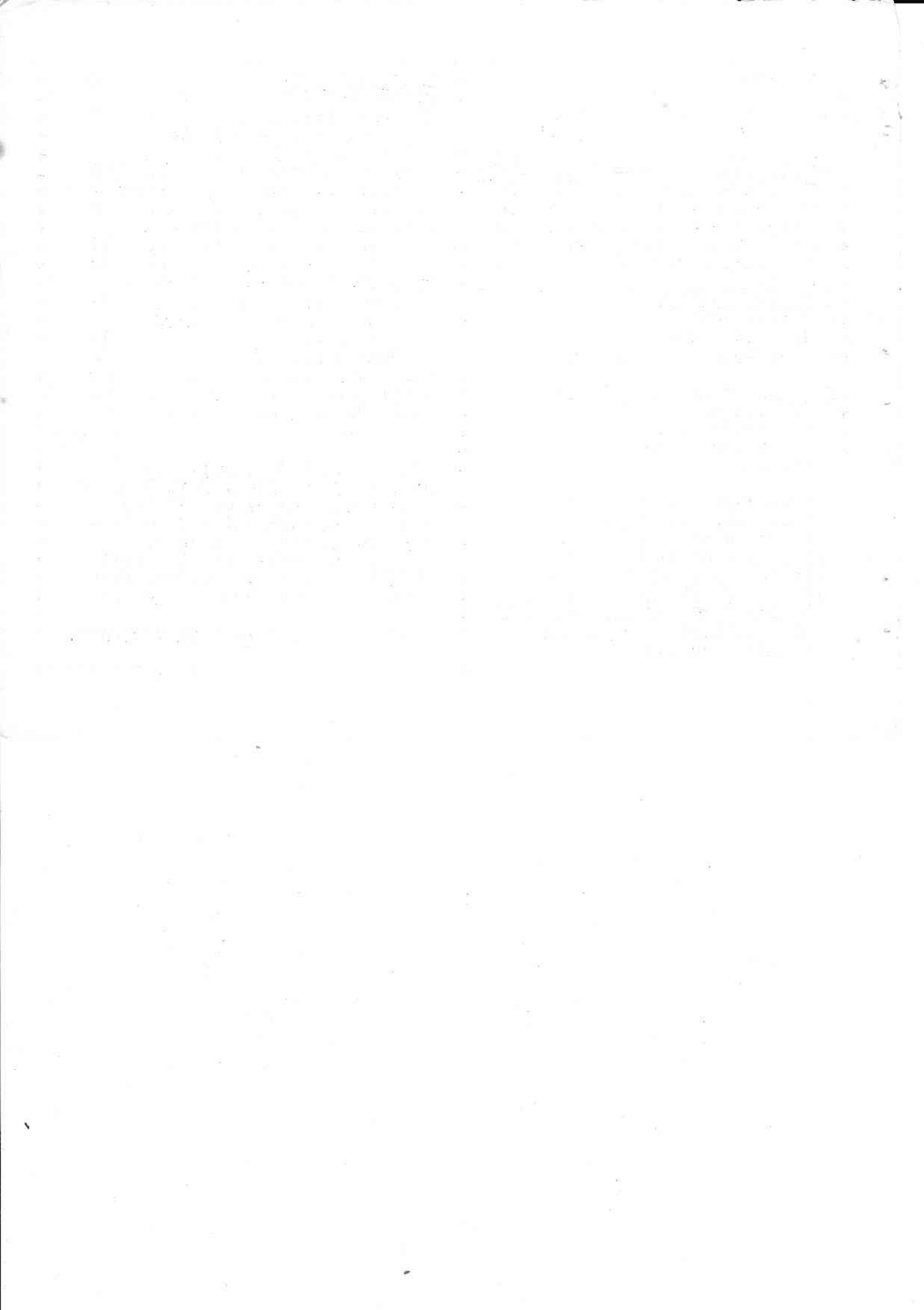
ORDER CHES BOOKS, MATERIALS OR MAGAZINE SUBSCRIPTIONS THROUGH "CHES NEWS"

NEXT ISSUE (FEBRUARY): 1959

Player of the Year; Full Congress report and games; One or two games from Australian Championship tournament in Sydney.

Note: "CN" will not give full report on Sydney tourney. That will appear in "Chess World."

SEASON'S GREETINGS TO EVERYONE.



+++++  
+ New Zealand  
+ C H E S S N E W S  
+ =====  
+  
+ Vol. 1, No.7 December 10, 1958.

=====  
+ FIRST PRESENTATIONS. . ."Player of  
+ the Year" awards may be presented  
+ to O.Sarapu and J.R.Phillips in  
+ Wellington next Easter weekend."CN"

+++++  
"PLAYER OF THE YEAR" AWARDS  
"Chess News" has pleasure in ann-  
ouncing that in February of each  
year this journal will name a New  
Zealand "Player of the Year," who  
will be selected on the basis of  
competitive performances and/or  
general contribution towards the  
game in the preceding year.

understands that both are available  
+ to take part that weekend in an  
+ invitation tournament which, if held,  
+ will be staged by the Wellington  
+ Chess League. A.Feneridis would be  
+ available for that tourney, and  
+ probably so would J.E.Eriksen.  
+  
+ cial recognition of his victory in  
+ Melbourne, 1956-57.

The only condition is that no-one  
will be named "Player of the Year"  
more than once.

+ The award to Rodney Phillips re-  
+ cognises his rapid advancement since  
+ he first won the Auckland schoolboys'  
+ championship five years ago, at the  
+ age of 11. He subsequently won the  
+ New Zealand schoolboys' championship  
+ in three successive years, last year  
+ was joint holder of the N.Z.title  
+ with A.Feneridis, and this year is  
+ national champion, as well as joint  
+ holder, with Sarapu, of the N.I.title.

In this way, we believe, we can  
honour players who have made a spe-  
cial contribution to the game, either  
at the board, in administration or  
instruction, or in any other way.

A trophy will be awarded to each  
"Player of the Year" on a suitable  
occasion as soon as convenient after  
the award is made.

+ The 1959 "Player of the Year"  
+ award will be announced in the next  
+ issue of "Chess News." Thereafter  
+ an annual award will be announced  
+ each February.

To recognise recent outstanding  
performances, "Chess News" announces  
two retrospective awards, as follows:  
O.Sarapu, Player of the Year, 1957.  
J.R.Phillips, Player of the Year, 1958.

The award to Mr Sarapu, four times  
champion of New Zealand, is in spe-

=====  
+ "CN" extends the Season's Greetings  
+ to all chess players, everywhere.

M A S T E R S   A N D   M E R I T

Congratulations to the N.Z.C.A. selection committee on their choice of "The Dozen" - the field for the forthcoming N.Z.Championship.

In having to reduce the field by half they had an unenviable task. Although there are bound to be disappointed entrants, we consider they have done well.

It is apparent, from the selections, that in making their choice, the selectors have been guided by recent form in top-level competition. In adopting that policy we consider they have acted wisely.

Also worthy of congratulations is the N.Z.C.A.Council on the obvious thought which has gone into framing qualifications for New Zealand Master selection. Although there will be reservations about the points rating recommended for the N.Z.Schoolboys' Championship -- for it must be recognised that Master Status is the peak of achievement, not just a gesture of encouragement -- the most commendable motives have activated the sponsors of this proposal and if it is endorsed by the affiliations we are sure it will be accepted by everybody and implemented in the spirit that will enrich the game.

+ STRONG FIELD FOR N.Z. CHAMPIONSHIP

+ There were 24 entrants for the N.Z.Championship at Hamilton, and the 12 players chosen are as follows: C.P.Belton, F.A.Foulds, B.C.Menzies (Auckland), B.H.P.Marsick (Taumarunui), R.A.Court (New Plymouth), D.I.Lynch (New Plymouth), W.Bello and T.Lepviikman (Palmerston N.), J.E.Eriksen and Z.Frankel (Wellington), F.P.Hutchings (Christchurch) and T. van Dijk (Dunedin).

+ Without going into details of records, we believe that all except Eriksen and Lepviikman have taken part in at least one of the last three N.Z.Championships, all finishing in the top half of the field.

+ Three -- Foulds, Lepviikman and Lynch -- are former champions.

+ As an indication of the keenness of the competition, "CN" has heard the names of at least half the field mentioned as potential titlewinners.

+ The Reserves tourney also will be tough. The three reserves for the championship, W.Reindler, B.Douglas and G.Haase, will all be playing. So, too, will R.E.Baeyertz, J.B.Kay, R.J.Sutton (Auckland), M.Ponimoni, E.Frost, Miss M.McGrath (Wellington), I.D.Hayes (Dunedin).

H O S T S      F O R      C O N G R E S S      -- Hospitable      W A I K A T O

Chess has been played on an organised basis in the Waikato since 1897, when the Hamilton CC was formed. A varying number of clubs have been active, and since 1947 the organisation of chess in the district has been co-ordinated through the Waikato Chess League.

Until this year the body formed on September 27, 1947, by delegates from Thames, Hamilton, Cambridge, Rotorua, Poroa, Waihi, Matangi and Morrinsville was known as the South Auckland Provincial Chess League. The new title is less cumbersome and gives greater emphasis to the status of the Waikato as an independent region.

There have been various changes in the level of activity in different parts of the area, with consequent changes in the clubs affiliated to the League, and at present affiliated are Hamilton, Hamilton East, Te Awamutu, Cambridge, Morrinsville and Tauranga. In addition, there are clubs at Tokoroa, Mangakino and Taupo.

Original membership of the League totalled 84, and at present it is 78. At peak in 1949 there were 111 players.

Since 1948 an annual championship tournament has been held at Queen's Birthday weekend, and the honours list appears in the next column.

- A Challenge Waikato Champions.
- 1948. E. Avery.
  - 1949. L. Cole and A. T. Scott (jointly)
  - 1950. A. T. Scott.
  - 1951. M. I. Wells.
  - 1952. E. J. Byrne.
  - 1953. W. Reindler.
  - 1954. A. T. Scott.
  - 1955. L. E. Whitehouse.
  - 1956. J. Arbuthnott.
  - 1957. L. E. Whitehouse.
  - 1958. B. H. P. Marsick.
- =====
- Mr J. H. Hopkins and Mrs Francis was the first secretary, both being from Morrinsville.
- At present the president is Mr A. T. Scott and the secretary is Mr N. A. Palmer.
- Except for 1957 an annual match has been played between Waikato and Auckland, and this year this event was merged with the Bledisloe Cup fixture, when Auckland carried too many guns.
- League delegates to NZCA have been the late Mr W. M. Haycraft, Mr H. F. Pobar, Mr C. P. Belton and now Mr B. Menzies.
- The Waikato has been a hive of activity preparing for Congress, and so far £40 has been raised.

QUALIFICATIONS FOR N.Z. MASTER

"Chess News"

Important business at the November meeting of NZCA Council included the receipt of several remits from Auckland, and one setting out proposed qualifications for N.Z. Master status was sponsored by Council. This remit states:

"That qualification be based on units, and that these units be as follows:

- "a) A unit for winning the N.Z. Senior Championship, equals 3 points;
- A unit for winning the N.Z. School-boys' Championship, equals 1 point;
- A unit for winning the North Island Championship, 1 point;
- A unit for winning the South Island Championship, 1 point.
- "b) A total of six of these units, of which at least three must come from winning the N.Z. Senior Championship, are required before Mastership is declared.
- "c) These units may be accumulated during the playing career of a player.
- "d) If a player comes second to a New Zealand Master in the Championship tournament, he shall be entitled to one unit to the value of three points.
- "e) General: Any New Zealand player

+ of a properly-constituted affiliate of the NZCA shall be declared a New Zealand Master if such player wins the N.Z. Senior Championship at least twice, or wins the N.Z. Senior Championship at least once and the North and/or South Island Championship at least three times, or wins the N.Z. Senior Championship at least once and wins the N.Z. School-boys'/Junior Championship at least three times.

+ "f) These rules to be retrospective.

+ "g) A New Zealand player is one who qualifies under Clause 2 Section III page 6 of the Constitution.

+ "h) In the event of a tie, units are earned by each and every player who ties for first place, even if a play-off later decides an absolute winner."

+ In order to give this important remit in full, details of other business and remits are held over.

+ =====

+ RAFFLE FOR RODNEY PHILLIPS FUND

+ N.Z.C.A. Council authorised Mr F. Vincent to organise and run a national raffle to help raise money for the Tours Fund. Tickets will not be sold until March, so details will be given in February.

PLANNING VARIATIONS AFTER MAKING A POSITIONAL JUDGMENT. . .by O.Sarapu

As explained in my previous article about judgment, the strategic or tactical planning comes after thorough examination of the position. Only then can planning be based on a sound foundation. It is amazing that so many strong players jump ahead and start with planning before thorough examination of the position. I am one of them, so I write this partly to myself!

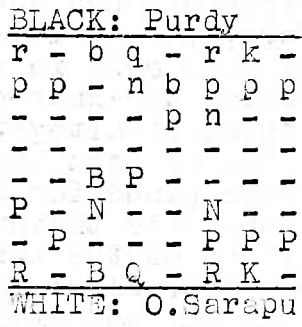
Planning in itself depends on many factors - the position, temperament, ingenuity and mood. I cannot possibly touch ingenuity, temperament or moodiness. I must restrict my discussion to positions, where the position itself gives the general lines of strategy, which are a guide for planning.

As an example I give my game with C.J.S.Purdy at Melbourne, 1957. Purdy is Black.

- 1.P-Q4, N-KB3; 2.P-QB4, P-K3; 3.N-QB3, B-N5; 4.P-K3, P-B4; 5.B-Q3, P-Q4; 6.N-B3, O-O; 7.O-O, PxBP; 8.BxP, QN-Q2; 9.P-QR3, PxP; 10.PxP, B-K2.

In this position we have the opening half-finished, but we can start planning the middlegame, even the endgame. I will answer the question "Why?" later, after thorough exam-

ination and judgment of the position. I will compare the pieces and Pawns as briefly as possible, pointing out the main factors.
a) Material is =.
b) White still has the first move.
c) The White KB is much better than the Black QB.
d) Black has to make many moves before his QR can be actively placed.
e) The Pawn structure is in Black's favour for the endgame (White has an isolated P).
f) White has more space and control over the centre squares.
From e) and f) we can see that Black's chances are in the endgame, while White has an advantage in the opening and middlegame. This all comes from the Pawn structure, which dictates strategic plans.
Now I can answer the question, why halfway through the opening we can start planning the middle and endgame. As the Pawn structure has stabilised, it has become clear where the pieces should be placed. If the Pawn



structure has not taken a clear form, then a long-range plan can be made only in connection with fixing the Pawn centre or abolishing it altogether.

Now we know the strategic long-range plans for White and Black.

White is trying to play P-Q5 or attack on the K-side, avoiding exchanges. Black is playing for the end-game and simplifications. He has a strong square, Q4, for his pieces.

How can we judge this position? I personally like White's position. It suits my style and temperament. Purdy, on the other hand, was much happier in Black's position. As both sides have different advantages it is impossible to judge this position objectively. It all depends on the plans and variations both play.

My plan was to attack on the K-side, along the QN1-KR7 diagonal and create weaknesses on Black's K-side. I expected Purdy to play the usual manoeuvre QN-N3-Q4 and then develop the Q-side and play along the QB file. He did not disappoint me, but I disappointed myself as will be seen later. From the diagram the game went:

11.Q-Q3. The variation 11.B-KN5,

+ N-Q4! to simplify is in Black's favour after 12.BxB, NxB as well as 12.N-K4, BxB; 13.N/4 or N/3xB, N/2-B3 etc. Also, 12.BxN or NxN lead to exchanges and right into Black's hands. The variation I now consider better than the one I played is 11.Q-K2, combining the K-side attack with pressure on the KP.

+ 11...., N-N3. As expected, but good.  
+ 12.B-N3, Q-Q3. This is unusual and not expected. I was sure of him playing QN-Q4. 13.B-KN5, R-Q1; 14.N-N5?!

+ A tactical venture to obtain the two Bishops, brought about because of the exposed Black Q and weakness on his Q-side. I also wanted to win time on the clock. Black almost loses the exchange and has to play exactly. Strategically White is going astray from sound and logical play. Exact play here would be 14.QR-Q1, then B-B2 or N-K5, followed by P-KB4-KB5 or KR-K1-K3-KR3 or KN3 etc. Black would then play QN-Q2, B-Q2-K1 or B3, QR-B1 and P-QR3, P-QN4, etc, on the Q-side. This would all be expected by both players. As will be seen, I later return to the original strategy.

+ 14...., Q-N1; 15.B-KR4 (threatening the deadly B-N3; Black has only one variation), B-Q2; 16.B-N3, BxN; 17.QxB, B-Q3; 18.N-K5, QN-Q4; 19.Q-K2, Q-B2; 20.QR-Q1, QR-B1. (Cont.footP.9)



FINAL SELECTION OF SCHOOLBOYS' TOURNEY GAMES  
 =====  
 Several games in the N.Z.Schoolboys' Championship were very well played by the winners, but were marred by too many errors. Few were as well played by both players as this game.  
 (Notes by O.Sarapu).

Dutch Defence

WHITE BLACK

L.J.Walpole R.Patterson  
 1.P-Q4 P-KB4  
 2.B-N5

Bogoljubov's idea, directed against N-KB3.

2. ... N-KB3

Preferable is P-KN3 or P-QB4.

3.BxN KPxB  
 4.P-K3 P-QN3?  
 Simple and good is P-Q4, as now White could have won a tempo by 5.Q-B3!, forcing P-Q4.  
 5.P-QB4? B-N5ch  
 6.N-Q2 B-N2  
 7.KN-B3 N-B3  
 8.B-Q3 N-K2  
 9.P-Q5! P-QN4!?

The idea of fianchettoing his QB did not come off too well. Now Black is playing correctly, to liven up his QB.  
 10.P-QN3!

White is determined and right to prove Black's

plan starting with 4...., P-QN3 is wrong.  
 10. ... O-O  
 11.N-Q4 B-B6  
 12.R-QN1  
 Also possible was the exchange sacrifice NxBP, NxN; 13.BxN, BxR; 14.QxB, etc, with more than enough compensation with B + P + position v. R.  
 12. ... BxN/Q4  
 13.PxB R-K1  
 14.O-O

White has a clear and undisputed advantage, as the Black QR, QB and Q are badly placed. Also, the N is in the way of his R. Walpole realises his chances lie on the K-side and plays the attack very well, an instruction to older players!

14. ... P-Q3  
 15.Q-R5! Q-Q2  
 16.KR-K1 P-N3  
 17.Q-R4 K-N2  
 18.R-K3 R-R1

Anticipating threats along the KR file.

===== (PLANNING VARIATIONS CONT.) =====  
 The "side variation" White started with 14.N-N5 gave White 2 Bishops but Black succeeded in exchanging one piece and completing his development. From here on the game soon became a clock race with both sides making mistakes. Eventually Purdy made the "last mistake," but as this has nothing to do with this article we leave the game as it is. In many cases there are tactical side variations as well as the long-range strategic plan. The next article will be "A System to see Combinations" (March issue).

Patterson also conducts the defence vigorously, but the out-of-place QB is his downfall.

19.QR-K1 N-KN1!  
 Defends all the weak squares on his K-side, KR3 and KB3. The R on KR1 is placed usefully, defending the KRP. To break up Black's King position now is not easy.

20.N-N1 P-N5

21.N-Q2

White realises that he has to use all his forces on the K-side, therefore undertakes this manoeuvre to block the Q-side, to avoid any counterplay there.

21. ... R-KB1

22.Q-N3 R-B2

23.N-B3 N-K2?

Black goes astray. It was necessary to play B-B1, guarding the K3 and KB4 squares. Also, the "unhappy Bishop" then would get some play.

24.R/l-K2 P-QR4?

25.N-R4! R/l-KB1??

K-KB1 was right. Now White wins with a combination which Black must have overlooked when playing 25....., R-KB1.

26.RxN! Q-Q1

If RxR, then 27.RxRch, QxR and 28.NxPch wins the Q. But now Black is a piece down and the rest is played by Walpole with precise technique.

27.NxPch, K-R1; 28.RxR, RxR; 29.N-R4, R-K2; 30.NxPch!, PxN; 31.QxNP, Q-KB1; 32.R-K3, B-B1; 33.Q-R5ch, K-N1; 34.R-N3ch, R-N2; 35.B-R7ch, K-R1; 36.B-B5ch, K-N1; 37.Q-R7ch, K-B2; 38.RxRch, QxR; 39.QxQch, KxQ; 40.BxB and wins.

OTAGO "FIND"

As with many last-round games, the one which follows, from the Otago schoolboys' championship, was a dramatic

"Chess News"

encounter. The winner, David Jackson, who finished 4th equal, was the real "find" of the tournament, writes R.A. Rasa; whose notes are given with the game.

Sicilian Defence

WHITE BLACK

- |         |           |
|---------|-----------|
| L.Amies | D.Jackson |
| 1.P-K4  | P-QB4     |
| 2.P-QN3 | N-QB3     |
| 3.B-N2  | N-B3      |
| 4.BxN?! |           |

Admittedly White sets his opponent an awkward question, which way to retake the Bishop, but just the same exchange of pieces at such an early stage, with no apparent reason, is not a good policy.

- |         |       |
|---------|-------|
| 4. ...  | NPxB  |
| 5.B-B4  | R-N1  |
| 6.Q-B3? | N-Q5  |
| 7.Q-Q3  | P-K4? |

Why not take the P at KN7 first?!

- |          |      |
|----------|------|
| 8.P-N3   | P-Q3 |
| 9.P-QB3  | N-K3 |
| 10.Q-B3  | B-Q2 |
| 11.Q-R5? | R-N2 |

- 12. BxN BxB
- 13. N-B3 Q-Q2
- 14. N-R4 O-O-O
- 15. Q-K2 P-B4
- 16. PxP BxP
- 17. NxB QxN
- 18. O-O B-K2
- 19. P-QB4 P-KR4
- 20. N-B3 R-B1?

Black later admits that this mysterious move was a waste of time.

- 21. Q-K4 Q-K3
- 22. P-KR4 R-N5
- 23. Q-R7 BxP!
- 24. QxRP B-B3!
- 25. Q-R1 R-R1
- 26. Q-N2 B-R5
- 27. N-K2 P-B4
- 28. P-B3? R-N2
- 29. P-Q3 P-B5
- 30. P-KN4 Q-R3
- 31. QR-N1 R-Q2
- 32. P-N4 R/2-R2
- 33. PxP B-B7ch!
- 34. KxB

Black's deep attacking plan comes to reality with a bang. To take the B with the K is White's only slender chance.

- 34. ... Q-R5ch
- 35. N-N3 PxNch
- 36. QxP QxQch??

In the course of the next few months "CN" will endeavour to present brief biographies of the eight players who will contest next year's World Championship Candidates' Tournament. We start with the 22-year-old champion of Russia and winner of the Portoroz Interzonal Tourney...MICHAEL TAL

=====

Born in 1936, Michael Tal began playing chess at the age of 12. His gifts were recognised al-  
A great pity! In tremen-  
dous time trouble Black misses the winning con-  
tinuation, 36...,Q-N4!

- 37. KxQ R-R7
- 38. P-N5 R/1-R6ch
- 39. K-N4 R-R5ch
- 40. K-B5 K-Q2?!
- 41. Pxp? R-B5ch
- 42. K-N6 KxP
- 43. RxP RxRP
- 44. K-R7 P-R4
- 45. P-N6 K-K3
- 46. R-N6ch K-K2
- 47. P-N7 R-B3?!
- 48. RxR KxR
- 49. P-N8/Q?? R-R7mate.

So Black induced his opponent into a trap and won after all. The moral is that he deserved to win in the first place.  
=====  
Notify us of change of address.

most at once and Master A.Koblentz became his trainer. He has remain-  
ed so ever since and much of Tal's success is due to his work. At the end of the 1957 Russian Championship Koblentz was awarded the title of Honoured Trainer of Chess.

In 1953, at 17, Tal won the championship of Latvia and was given the title Candidate Master. In the same year he took part in the All-Union team tourneys. At Board 2 for Latvia he shared 1st and 2nd places with Master G.Kasparian, in front of V.Korchnoi, A. Bannik and G.Ilivitsky. So he was given the opp-  
portunity to play a match for the Master title and

this match - against Master V.Saigin - he won 8-6. He was then 18. Three years ago he won a semi-final of the 23rd U.S.S.R.Championship and finished 5-7 equal. By 1956 he was an established Master in the Soviet Union but had made no international conquests. However, in that year's World Students' Teams' Championship he had the best score at Board 3.

In the semi-finals of the 24th U.S.S.R.Championship he nearly suffered a considerable setback by failing to qualify. After 12 rounds he had scored only 5½ points. Then he scored 6 out of his last 7 games just to qualify.

With 7 rounds of the semi-final to play, no one could have believed Tal was the next Soviet champion, but he won that great tournament, last year, and took the title for a second time early this year. Since then he has been a member of the Russian team which won the World Teams' Championship, led the Russian team to victory in the World Students' Teams Championship (both biennial events) and competed at Portoroz.

Tal's strength lies in his rapid and certain appreciation of a position. He is able to calculate variations quickly and deeply. He is a master of tactics and combination, and loves to sacrifice. The attack is his medium - and that is the reason this young player, a grandmaster since last year whose name was hardly known outside Russia before then, now is almost the pre-post favourite to become the next challenger for Botvinnik's title. Last month we gave the game Tal-Fuster from Portoroz, score only; now we repeat that game, with notes by O.Sarapu, so that

+readers will be able to see some of the things they may have missed, and also gain a deeper insight into Tal's play.

Caro-Kann Defence

| WHITE   | BLACK    |
|---------|----------|
| M.Tal   | G.Fuster |
| 1.P-K4  | P-QB3    |
| 2.P-Q4  | P-Q4     |
| 3.N-QB3 | PxP      |
| 4.NxP   | N-Q2     |

+The Caro-Kann has made an appearance again in master tournaments since

early Botvinnik surprised Smyslov with it in this year's match. Botvinnik himself said the Caro-Kann is a somewhat passive but solid defence. Fuster for some reason or other

+plays a variation which has not a very good reputation. Usual and best for Black is KN-B3 or B-B4, etc.

|          |       |
|----------|-------|
| 5.N-KB3  | KN-B3 |
| 6.NxNch  | NxN   |
| 7.B-QB4  | B-B4  |
| 8.Q-K2   | P-K3  |
| 9.B-KN5  | B-K2  |
| 10.O-O-O | P-KR3 |

By simple and straight

development, White has at least maintained the advantage of development. With his last move Black prepares the Lasker idea, to simplify in cramped and inferior positions, as in the Lasker Variation of the Queen's Gambit.

- 11. B-R4 N-K5
- 12. P-KN4!

Refutation of Black's plan. White is making complications on the K-side, so that Black will find it difficult to complete his development and simplify by exchanges.

- 12. ... B-R2
- 13. B-KN3 NxB
- 14. BPxN!

Again a finesse! This is better than RPxN, as it is difficult to make some play on the KR file because the Black RP is well defended. Now the Black KBP and KP are the targets of White's pressure.

- 14. ... Q-B2

- 15. N-K5 B-Q3
- 16. P-KR4 P-B3?

+As the game shows, Black should not have played this. But it is already difficult to suggest something good for Black. He cannot castle on either side because of 17. NxKBP! It is possible that KR-B1, with B-N1 and O-O-O to follow is Black's best chance.

- 17. BxP!

With a neat sacrifice Black's K is nailed to the centre and exposed to a decisive attack.

- 17. ... PxN
- 18. PxP B-K2
- 19. KR-B1 R-KB1
- 20. RxRch BxR.
- 21. Q-B3

+Only 2 Pawns for a B, but every Black piece is hopelessly placed. Also, Tal has judged correctly that his attack will continue without the piece.

- 21. ... Q-K2
- 22. Q-N3 R-N1
- 23. B-Q7ch QxB

Black would be O.K. if

he could keep R+B+B against Q, but the unhappy placement of his Bishops and K cannot prevent further loss of material.

- 24. RxQ KxR
- 25. Q-B7ch B-K2
- 26. P-K6ch K-Q1
- 27. QxP Resigns.

This was the game between the winner and the "Wooden spooner." As in most F.I.D.E. qualifying tournaments, zonal or interzonal, it is more important to qualify than to win the tourney. Therefore there are so many draws between leading players. They show their real standard against the "weak." Fuster had the hardest tournament of all, as everybody was after him - which this game shows.

+++++  
NO "CN" NEXT MONTH

Remember that there will be no issue of "CN" in January.

## ALGEBRAIC NOTATION

Some time ago L.Esterman and R.A.Court suggested that "CN" present games in algebraic notation and we promised to undertake the experiment. At last we do so, although in the interim we have received letters stating that if "CN" adopted algebraic we would lose circulation, etc.

We do not intend to make such a radical change -- but we deem it our duty to enable any players who so desire to become familiar with algebraic to do so, as a considerable proportion of chess literature is printed in that form.

A B.C.M. publication states that algebraic notation is easier to write than descriptive notation. It simplifies production of chess journals and results in a considerable economy of space. There is no need to distinguish between the Kside and Qside pieces. Each square is represented by one symbol, whether viewed from White's side of the board or Black's.

Thus White's QB5 or Black's QB4 are simply c5. The 8 files are lettered a to h, left to right from White's side of the board. The 8 ranks are numbered 1 to 8, again from White's side. A square is identified by the letter and number of the file and rank which intersect at the square.

A move by a piece is described by

"Chess News"

giving the initial of the piece, followed by the symbol of the square of arrival, with added symbols as required to avoid confusion. If the move is to a vacant square, the symbols run on with not even a hyphen. If a man is captured the symbol for the piece and square of arrival are linked by a x (in some publications by a:).

A move or capture by a Pawn is described in the same way, but is not preceded by the initial P for Pawn.

The easiest way to become familiar with the system, after that brief explanation, is to play over a game or two, and we have kept aside games played by the two players who suggested our use of the system, to use them for illustrative purposes.

S.I.Championship Game

First we give a game from this year's S.I.Championship, with the moves in descriptive notation in the first column and in algebraic in the second.

Nimzoindian Defence

WHITE: L.Esterman BLACK: J.Hunter  
 1.P-Q4 N-KB3 1.d4 Nf6  
 2.P-QB3 P-K3 2.c4 e6

|           |            |           |          |
|-----------|------------|-----------|----------|
| 3.N-QB3   | B-N5       | 3.Nc3     | Bb4      |
| 4.P-K3    | P-B4       | 4.e3      | c5       |
| 5.B-Q3    | P-QN3      | 5.Bd3     | b6       |
| 6.N-B3    | B-N2       | 6.Nf3     | Bb7      |
| 7.O-O     | KBxN       | 7.O-O     | Bxc3     |
| 8.PxB     | O-O        | 8.bxc3    | O-O      |
| 9.R-K1??  | N-K5       | 9.Re1??   | Nd4      |
| 10.Q-B2   | P-B4       | 10.Qc2    | f5       |
| 11.N-Q2   | Q-R5       | 11.Nd2    | Qh4      |
| 12.R-B1   | R-B3       | 12.Rf1    | Rf6      |
| 13.N-B3   | Q-R6       | 13.Nf3    | Qh5      |
| 14.B-K2   | R-R3       | 14.Be2    | Rh6      |
| 15.P-KR3  | R-N3       | 15.h3     | Rg6      |
| 16.N-K5   | RxPch      | 16.Ne5    | Rxg2ch   |
| 17.KxR    | N-N4dischl | 17.Kxg2   | Ng5disch |
| 18.P-Q5   | QxPch      | 18.d5     | Qxh3ch   |
| 19.K-N1   | PxP        | 19.Kg1    | exd      |
| 20.P-K4   | NxP        | 20.e4     | Nxe4     |
| 21.Q-Q3   | QxQ        | 21.Qd3    | Qxd3     |
| 22.BxQ    | P-Q3       | 22.Bxd3   | d6       |
| 23.N-B3   | P-N3       | 23.Nf3    | g6       |
| 24.PxP    | BxP        | 24.cxd    | Bxd5     |
| 25.P-B4   | B-N2       | 25.c4     | Bb7      |
| 26.N-N5   | N-Q2       | 26.Ng5    | Nd7      |
| 27.R-K1   | QN-B3      | 27.Re1    | Ndf3     |
| 28.P-B3   | NxN        | 28.f3     | Nxg5     |
| 29.BxN    | N-R4       | 29.Bxg5   | Nh5      |
| 30.K-B2   | B-R3       | 30.Kf2    | Ba6      |
| 31.R-K7   | P-Q4       | 31.R37    | d5       |
| 32.QR-K1  | P-Q5       | 32.Rae1   | d4       |
| 33.R-K8ch | RxR        | 33.Re8ch  | Rxe8     |
| 34.RxRch  | K-B2       | 34.Rxe8ch | Kf7      |
| 35.R-K7ch | K-B1       | 35.Re7ch  | Kf8      |
| 36.RxQRP  | Resigns    | 36.Rxa7   | Resigns. |

TARANAKI GAME....And now, in algebraic only, one of the winner's games from the Taranaki one-day tourney held at Stratford. Queen's Gambit Declined

|         |            |         |                |
|---------|------------|---------|----------------|
| WHITE   | BLACK      | 13.Bd2  | Bc5            |
| R.Court | J.Jeffares | 14.Be2  | O-O            |
| 1.d4    | d5         | 15.O-O  | Nc6            |
| 2.c4    | Nf6        | 16.a3   | Nd4            |
| 3.cxd   | Nxd5       | 17.Nxd4 | Bxd4           |
| 4.Nf3   | Bf5        | 18.Rad1 | Qd6            |
| 5.Qb3   | b6         | 19.Kh1  | Be5            |
| 6.Nbd2  | Be6        | 20.f4   | Bd4            |
| 7.Ng5   | Qd7        | 21.Bc4  | Kh8            |
| 8.e4    | Nf4        | 22.f5   | Rad8           |
| 9.d5    | Bxd5       | 23.fxe  | Qxe6           |
| 10.exd  | Nxd5       | 24.Nf4  | Black          |
| 11.Ndf3 | f6         |         | loses on time. |
| 12.Nh3  | e6         |         |                |

READERS WRITE.....RESOLVING TIES

Sir,-I am in full agreement with you on your suggestion on separating players with the same score. The count-back system, I think, is not a good method of dividing players with the same score.

A good example of this is the 4th placing in the 1956-57 Major Open at the N.Z.Congress, between J.Arbutnott and myself. I had a very good run in the final six rounds, scoring 5 points. At the start of these six rounds I was given games against the leaders, which increased my Sonneborne count tremendously, which (Cont. foot next page)

UNIQUE MEMBERSHIP OF PARNELL CHESS CLUB

The Parnell Chess Club is a newly-formed club which will shortly be affiliated with the Auckland Chess League. It is unique in that it caters primarily for blind players, although sighted members are always welcome. It was formed by a group of blind chess enthusiasts who aimed at creating a social contact between blind and sighted people. The club meets every Monday night at the Auckland Foundation for the Blind and at present has about 18 members.

Blind players can play chess as easily as sighted people. The Black squares are raised about one-eighth of an inch and the pieces are of simplified design, with a short peg on the bottom to fit into a hole in the centre of each square. The White pieces have a small projection on the top to distinguish them, and the player simply uses his sense of touch to determine the position of the pieces. Although it was only a short time since the club was started, it has

+ already proved a tremendous success. It is to be hoped that this will encourage formation of similar clubs in the other main centres. + Recently the club played a friendly 10-board match against Dominion Road, losing 4-6, and here is the finish of one of the games, won by Parnell CC's strongest player.

BLACK: S. van Dam

```
- - - r - - k -
p p - q - - - p
- n - - - p - -
- N - p - - - -
- - - - - - -
- P - Q - - - -
P - - - - P P P
- - - - R - K -
```

WHITE: T Free.

1.Q-Q4! QxN?

2.R-K7! Adjudicated

a win for White.

=====
RESOLVING TIES (Cont.) was not fair on Mr Arbuthnott. I think if the Swiss had been run correctly the result would have been round the other way.

I realise that a Swiss is not easy to run, and that those doing the pairing at that tournament did the best they could do.

Because of events as they happened to me, I suggest that there should be a play-off or a tie, and that the count-back system should not be used. I also think that the count-back system is a lot better for Round Robin tournaments than Swiss events. - I am, etc, K.M. STEELE.

ALL-WELLINGTON SURPRISE

With four games and four wins, J. Eriksen appeared to have the All-Wellington Championship easily won, but then he lost in



"Chess News"

succession to R.O'Callahan and M.Ponimoni, and leading scores were: O'Callahan, 5-2; E.Young, 4½; M.Ponimoni, 4; Erik- sen 4-2 (game with Z. Frankel to be completed); and N.T.Fletcher, 4-2 (to play V.Artemiev). Thus, with two games to be played, O'Callahan leads and Eriksen and Fletcher may catch him.

Here is Eriksen's loss to O'Callahan, tho Hutt man's revenge for their Labour weekend game.

King's Indian Defence

WHITE BLACK  
J.Eriksen R.O'Callahan

- 1.P-K4 P-Q3
- 2.P-Q4 N-KB3
- 3.N-QB3 P-KN3
- 4.P-KB4 B-N2
- 5.N-B3 O-O
- 6.P-K5 PxP
- 7.BPxP N-Q4
- 8.B-QB4 P-QB3
- 9.O-O B-K3
- 10.B-N3 P-QB4
- 11.N-KN5 PxP
- 12.NxB BPxN
- 13.RxRch BxR

- 14.QxP N-QB3
- 15.Q-K4 Q-N3ch
- 16.K-R1 N-B2
- 17.B-K3 Q-N5
- 18.QxQ NxQ
- 19.R-Q1 B-N2
- 20.B-KB4 R-QB1
- 21.R-Q7 K-B1
- 22.B-N5 N-B3
- 23.N-K4 P-KR3
- 24.B-K3 P-QN3
- 25.P-B3 NxP
- 26.R-Q1 N-N5
- 27.B-B4 B-K4
- 28.BxB NxB
- 29.N-N3 K-N2
- 30.N-K2 N-N5
- 31.K-N1 P-K4
- 32.N-N3 N-B3
- 33.P-KR3 N-N4
- 34.R-K1 R-B4
- 35.N-K4 NxN
- 36.RxN K-B3
- 37.R-K1 P-K3
- 38.R-Blch K-K2
- 39.B-B2 P-N4
- 40.R-K1 N-Q3
- 41.R-K2 P-N4
- 42.K-B2 N-B5 (sealed)
- 43.B-K4 N-Q3
- 44.K-B3 P-KR4
- 45.B-N6 P-R5
- 46.B-Q3 N-K1

- 47.P-KN3 PxP
- 48.KxP N-B3
- 49.P-KR4 PxPch
- 50.KxP P-K5
- 51.B-B2 K-Q3
- 52.K-N3 R-N4ch
- 53.K-B4 R-N5ch
- 54.K-K3 K-K4
- 55.K-Q2 R-N6
- 56.B-N3 P-R4
- 57.P-B4 PxP
- 58.BxP N-Q4
- 59.P-N3 K-Q5
- 60.P-R3 N-B6
- 61.R-R2 P-K4
- 62.K-B2 P-K6
- 63.B-K2 NxB
- 64.RxN R-B6
- 65.R-K1 R-B7ch
- 66.K-B1 K-Q6
- 67.Resigns.

OTAGO SCHOOLBOYS

Otago schoolboy play this year is concluding with a tourney in three grades. Group A resulted in a tie between M.Muir and R.M.Bibby. A 4-game play-off is under way, Muir leading 1½-½. N. Thomson, 7-0, won Group B, with A.Hutton 6-1.

AUCKLAND SCHOOLS' TEAMS TOURNEY

|                    | 1.    | 2. | 3.    | 4. | 5. | 6. | Tl.   | Pl. |
|--------------------|-------|----|-------|----|----|----|-------|-----|
| 1. Mt Albert G.S.  | x 1/2 | 1  | 1     | 1  | 1  | 1  | 4 1/2 | 1   |
| 2. Kelston H.S.    | 1/2   | x  | 1     | 1  | 1  | 1  | 4 1/2 | 2   |
| 3. Penrose H.S.    | 0     | 0  | x 1/2 | 1  | 1  | 1  | 2 1/2 | 3=  |
| 4. Auckland G.S.   | 0     | 0  | 1/2   | x  | 1  | 1  | 2 1/2 | 3=  |
| 5. King's College  | 0     | 0  | 0     | 0  | x  | 1  | 1     | 5   |
| 6. St Kentigern C. | 0     | 0  | 0     | 0  | 0  | x  | 0     | 6   |

Mt Albert Grammar won this year's Auckland Secondary Schools' teams competition very narrowly from Kelston High School. Play took place in the Dominion Road C.C. on Friday nights. In the critical match, Kelston v. Mt Albert, H. Ensor (top board for Kelston) secured a hard-earned draw against national champion Rodney Phillips. At Board 2 J.D.

QUEEN SACRIFICE

Although the Queen sacrifice did not materialise, it was there in the following game from the Otago CC Intermediate Grado in the current limited opening tournament. This was the only game submitted for our inaugural novelty section. Notes by W.A. Poole.

Q.G.D., Orthodox Defence

| WHITE                                      | BLACK      |
|--|------------|
| R. Lockhart                                | J. McGowan |
| 1. P-Q4                                    | P-K3       |
| 2. P-QB4                                   | P-Q4       |
| 3. N-QB3                                   | N-KB3      |
| 4. B-N5                                    |            |
| Reaching the set position for the tourney. |            |
| 4. ...                                     | QN-Q2      |
| 5. N-KB3                                   | B-K2       |

Prince (Mt Albert) was also held to a draw. This gives some idea of the strength of Auckland school-boys. M. Fournier, winner of Dominion Road CC's intermediate B championship this year could get only as high as Board 4 in the Kelston team.

6. PxP Pxp What is White's winning move?  
 7. P-K3 P-B3 16. B-B4! B-K3!  
 8. Q-B2 O-O What else? N-Q4 loses a piece to 17. BxN. R-B1 loses the exchange after 17. N/4-N6. R-Q1 succumbs to mate by 17. BxPch and mate in 2. And K-R1 loses the Q after Nxpch.  
 9. B-Q3 R-K1 17. NxB PxN  
 10. O-O P-KR3 18. BxPch K-R1  
 11. B-B4 N-R4? Now White won R and 3 Ps for 2 pieces, but the mate was on by 19. N-N6ch, K-R2; 20. N-B8ch!, K-R1; 21. Q-R7ch!, NxQ; 22. N-N6 mate.  
 12. NxQP! NxB  
 13. B-B7 (book trap).  
 13. NxN N-B3  
 14. P-QR4  
 Better QR-N1 to play for P-QN4 if the minority attack is to be tried.  
 14. ... P-QR4  
 15. N-K5 Q-B2  
 At this point the game is worth detailed study.

GAMES FROM WELLINGTON LABOUR WEEKEND TOURNEY

MATE WAS THERE

WINS BY RUNNERS-UP

Centre Counter Game

French Defence

| WHITE        | BLACK     |
|--------------|-----------|
| R.O'Callahan | J.Eriksen |
| 1.P-K4       | P-Q4      |
| 2.PxP        | QxP       |
| 3.N-QB3      | Q-QR4     |
| 4.B-B4       | N-KB3     |
| 5.N-B3       | B-N5      |
| 6.O-O        | P-B3      |
| 7.P-QR3      | P-K3      |
| 8.P-Q3       | Q-B2      |
| 9.N-K4       | QN-Q2     |
| 10.P-R3      | P-KR4     |
| 11.N/4-N5    | B-Q3      |
| 12.Q-K1      | K-K2?     |
| 13.NxBP!     | KxN       |
| 14.PxB       | PxP       |
| 15.N-N5ch?   |           |

Here White missed 15.  
QxPch, K-N3; 16.Q-B7ch,  
K-R2; 17.N-N5ch, K-R3; 18.  
N-K6dis ch, K-R2; 19.  
QxPmate.  
15. ... K-N3  
16.P-KN3, N-K4; 17.K-N2,  
R-R4; 18.P-B4, R/1-R1;  
19.R-N1, R-R7ch; 20.K-B1,  
NxB; 21.PxN, Q-N3; 22.  
N-K4, QxRch; 23.KxQ,  
R-R8ch; 24.K-B2, R/1-R7ch;  
25.K-K3, RxQch; 26.K-Q3,  
NxB; 27.Resigns.

| WHITE       | BLACK   |
|-------------|---------|
| A.Wassilief | K.Beyer |
| 1.P-K4      | P-K3    |
| 2.P-Q4      | P-Q4    |
| 3.PxP       | PxP     |
| 4.N-KB3     | B-Q3    |
| 5.B-K2      | N-K2    |
| 6.B-K3      | QB-B4   |
| 7.QN-Q2     | QN-B3   |
| 8.P-B3      | P-KR3   |
| 9.O-O       | O-O     |
| 10.N-R4     | B-R2    |
| 11.P-KB4    | Q-Q2    |
| 12.P-KN4    | QR-K1   |
| 13.N-N2     | K-R1    |
| 14.Q-K1     | N-KN1   |
| 15.Q-N3     | QN-K2   |
| 16.N-B3     | P-KB3   |
| 17.Q-R3     | N-N3    |
| 18.QR-K1    | RxB     |
| 19.NxR      | NxP     |
| 20.Q-R4     | P-KN4   |
| 21.N-K5     | PxN     |
| 22.Q-N3     | PxP     |
| 23.RxN      | BxR     |
| 24.Resigns. |         |

French Defence

| WHITE     | BLACK  |
|-----------|--------|
| R.A.Court | J.Howe |
| 1.P-K4    | P-K3   |

|  |       |
|--|-------|
| 2.P-Q3   | P-Q4  |
| 3.N-Q2   | N-KB3 |
| 4.KN-B3  | P-KN3 |
| 5.P-K5   | KN-Q2 |
| 6.P-Q4   | B-N2  |
| 7.B-Q3   | P-QB4 |
| 8.P-QB3  | N-QB3 |
| 9.P-QR3  | Q-N3  |
| 10.Q-R4  | O-O   |
| 11.O-O   | P-B3  |
| 12.KPxP  | N/2xP |
| 13.PxP   | QxBP  |
| 14.N-N3  | Q-Q3  |
| 15.B-K3  | Q-B2  |
| 16.Q-R4  | P-K4  |
| 17.N-KN5   | P-K5  |
| 18.B-B2  | P-KR3 |
| 19.N-R3  | P-KN4 |
| 20.Q-N3, N-K4; 21.NxP,<br>PxN; 22.BxNP, N-R2; 23.<br>B-R6, K-R1; 24.BxB ch,<br>QxB; 25.QxQch, KxQ; 26.<br>QR-Q1, N-KB3; 27.N-Q4,<br>K-R3; 28.N-N5, R-KN1;<br>29.K-R1, B-N5; 30.QR-K1,<br>N-B5; 31.P-B3, PxP; 32.<br>PxP, B-R6; 33.R-B2,<br>QR-K1; 34.R-QN1, N-K6;<br>35.B-Q3, B-N7ch; 36.RxB,<br>NxR; 37.NxP, R-K8ch; 38.<br>RxB, NxR; 39.B-K2, N-R4;<br>40.N-N5, N-B5; 41.N-Q4,<br>N-R6 and mate next move.<br>Next copy deadline Feb.1 |       |

ON EN D G A M E S

=====  
If there is one phase in which NZers' play has room for improvement more than any other, we believe it is in the endgame. Therefore we are on the lookout for any positions of interest which might be worthy study.

For example, look at the finish of Eriksen-Marsick, Wellington, Labour weekend.

BLACK: B.Marsick

- - - B - - k -  
- - p - - p - p  
- - - - - - - -  
p - - - p - - -  
b p - - - - - -  
- P - - - - - -  
- - P - - - P P  
- - - - - K -

WHITE: J.Eriksen.

With Black to play a draw was agreed and we commented: "An interesting try is 27....,BxP; 28.PxB, P-R5 and 29.PxP loses but White can play 29. BxP, PxP; 30.BxP.

Eriksen has pointed out that 27...., BxP wins, because after 28.PxB, P-R5; 29.BxP Black can play P-B3!

In writing on this point Brian Douglas says the only other try for White is 29.B-B6, but then P-R6; 30.BxP, P-QB4 and the Pawns march through. Now we will await further analysis, but this is a lesson that Bishops of opposite colours are not such a simple draw as usually is claimed. Another illustration on the same point will be given in next issue.

WAIKATO GAME

Some readers might remember that in our first issue we ran Marsick-Whitehouse position in which a draw was agreed when there was a win for White. The position was:

8/8/p4klp/P7/4K1P/8/8/8.  
The win was: 1.K-Q5, K-N3; 2.K-B6, K-R4; 3. K-N6, KxP; 4.KxP, K-N6; 5.K-N6 (not K-N7?), P-R4;

6.P-R6, P-R5; 7.P-R7, P-R6; 8.P-R8/Q and the Black King cannot reach the 7th and protect the Pawn.

MISCALCULATION

W.A.Poole has enlightened us on the oversight in his October "Game of the Month" with R.W.Lungley. After 21.N-N5 ch the position was: r2R1b2/pb2pklp/2p3pB/g5N1/8/2P1P3/P4PPP/3R2K1.

White (Poole) calculated the best line as 21...., K-N1; 22.N-K6, RxR; 23. RxR, QxR; 24.NxQ, BxB; 25.NxB, when White keeps his P or has mating chances. But 22...., Q-KB4! leaves three White pieces en prise and prevents the QR from readily leaving the first rank.

Another reminder that there will be no issue of "CN" in January, and that copy and competition entries must reach us by February 1.

SNIPPETS. . . Ortvin Sarapu and Rodney Phillips will carry with them to Sydney the best wishes of all New Zealand chess players. . . Sarapu considers it will be a harder tourney than Melbourne 1956-57, with Lajos Steiner playing. He has just won the N.S.W. Championship with a score of  $11\frac{1}{2}-\frac{1}{2}$ . . . Sarapu is playing two correspondence games against grandmaster Paul Keres, at top board for an Estonia-born team in a match with a team in Tallinn, the capital of Estonia. . . Sarapu won a five-minute lightning tourney run by Dominion Road C.C. . . R.E. Baeyertz is leading in the Auckland C.C. Summer Cup tourney. . . C.A. Rose, not Baeyertz as reported in October "CN", won in Auckland CC championship from J.B. Kay because Kay failed to seal his move. . . Wellington CC is operating Dominion Road CC perpetual grading system, initially as an experiment. . . Dr J.H. Darwin, a popular leading member of Civic CC and son of Canterbury's L.J. Darwin, has left for the United States on a 2-year Academy of Science scholarship. . . Miss C. Donovan has taken over Wellington League secretaryship for a spell from Z. Frankel, who is busily engaged on other work. . .

As a help in selecting N.Z. Championship field, deciding those worthy of Master status, seeding players in Swiss events, and for general interest, "CN" feels a national grading list might be welcome, and we are working out a list on the Harkness system in use in the United States and England. We will publish the results, probably in March. . . Waikato League would like to hear from anyone with donations or offers of assistance for Congress. . . Hamilton East CC has just acquired a couple of new members of good strength and hope for good results in inter-club play next season. . . "CN" is anxious to hear from any schoolboys who would like to be paired in a friendly correspondence game or two. . . Otago CC are winding up the year with kriegspiel, etc., in a novelty evening on December 13, and Wellington CC will be doing likewise the following Saturday. . . For our Novelty section in February we are looking for any NZ brevities. Let's have 'em.  
 +-----+  
 + WELLINGTON C.C....Meets Saturday +  
 + evenings, above Wellington Taxis, +  
 + Vivian St., visitors welcome. +  
 + Sec., R.A. Godtschalk, Phone 16-558. +  
 + D.O.P.: E. Frost, Phone 41-243. +  
 +-----+

PROBLEM COMPETITION RULES: Points are:

- a) 2-mover, correct solution, 2 points.
- b) 3-mover, correct key, 3 points, plus 1 point for each variation given correctly in full. Deduction of 1 point for each notation error.
- c) No solution, correct claim, 2 points for 2-ers, 3 points for 3-ers. Wrong claim, minus 1 point.
- d) Cocks, 2 points for each key for 2-ers; 3 points for each key move in 3-ers, plus 1 point for each variation given correctly in full, minus 1 point for each notation error.
- e) Problem Editor to award bonus points under special circumstances, e.g, naming error if a problem is printed incorrectly.

CLUB GAME OF THE MONTH

Although not strictly for a competition game, we award the 5/- book token prize to R.A.Court for this win in a practice match game against K.M.Okey. Such games are eligible, provided they are played under

|                   |         |             |        |
|-------------------|---------|-------------|--------|
| match conditions. |         | 13.B-Q2     | P-KR3  |
| WHITE             | BLACK   | 14.P-QR3    | O-O    |
| K.M.Okey          | R.Court | 15.KR-K1    | KR-K1  |
| 1.P-K4            | N-KB3   | 16.QR-Q1    | QR-Q1  |
| 2.N-QB3           | P-Q4    | 17.P-KN3    | P-K4   |
| 3.PxP             | NxP     | 18.N-KR4    | B-R2   |
| 4.N-B3            | B-N5    | 19.Q-N4     | N/2-B3 |
| 5.B-B4            | P-K3    | 20.NxNch    | NxN    |
| 6.P-KR3           | B-R4    | 21.Q-K2     | RxQP   |
| 7.P-Q4            | P-QB3   | 22.B-N4     | Q-Q2   |
| 8.N-K4            | N-Q2    | 23.B-B5     | RxR    |
| 9.N-N3            | B-N3    | 24.RxR      | QxKRP  |
| 10.Q-K2           | B-Q3    | 25.Q-B3     | B-K5   |
| 11.N-K4           | B-B2    | 26.R-Q7     | QxR    |
| 12.O-O            | Q-K2    | 27.Resigns. |        |

Perpetual Ladder.- New solvers may join the ladder at any time. After April, July and October, 1959, issues the leader will be awarded a trophy of 6 months' sub. to "CN" and will start again at the bottom. In the event of a tie, each player will receive trophy.

Championship. - Starting in the February issue, an annual championship will be conducted, with book prize for the winner. Points to be totalled through each calendar year.

Entry Fee.- No initial entry fee, but an extra 2/6 payable on renewal of annual subs, towards trophies.

=====

THOMPSON-HIRST: The September Club game of the Month has been fully analysed by K.M.Steele from the position after 16.Q-Q5: 2kr2rl/ppp2p1p/3pnp2/3Q4/2N1PP2/6Pq/PP5P/R4RK1. Steele suggests 16....,RxNPch; 17.PxR,QxPch; 18.K-R1,Q-R5ch; 19.K-N2,R-N1ch; 20.K-B3 and after QxPch the attack is inconclusive and we can see no improvements.



TOURS FUND CONTINUES TO GROW STEADILY

A steady flow of contributions has built up the Tours Fund during the past month and there is every hope of seeing it top £100 before the end of the year. This will be a good jumping-off place before the big effort of the nationwide raffle to be run by Mr F.Vincent, with official sponsorship by NZCA early in the New Year.

Mr Vincent has written to all clubs seeking gifts and contributions towards the prize list. For those interested, his address is 26 Codrington Crescent, Mission Bay, Auckland. A brief mention of the raffle appears in this issue, but full details will be given in February.

A report we regret is that NZCA approached the Government seeking a grant for this fund and for chess generally, and received the disappointing reply that the Government was not prepared to do anything to help chess. So we are left on our own -- and can hope that that rebuff will increase our determination to carry this project through. The continued flow of contributions, the raffle, and enthusiasm of those organising special efforts to raise the money give every reason for optimism that it will be PHILLIPS FOR BASLE.

"Chess News"

| + C.N. TOURS FUNDS |    | £  | s | d |
|--------------------|----|----|---|---|
| + S.Mancewicz      | 1  | -  | - |   |
| + G.Severinsen     | 10 | -  | - |   |
| + F.Severinsen     | 10 | -  | - |   |
| + A.Wilson         | 10 | -  | - |   |
| + P.Heremai        | 10 | -  | - |   |
| + W.Thomsen        | 5  | -  | - |   |
| + W.M.Scott        | 5  | -  | - |   |
| + November tot.    | 3  | 10 | - |   |
| + Prev.Ack.        | 37 | 2  | 6 |   |
| + Total to date    | 40 | 12 | 6 |   |

| + C.N. PENNY FUNDS |   | £  | s | d |
|--------------------|---|----|---|---|
| + Hawera CC        | 1 | 1  | 7 |   |
| + Hamilton ECC     | 5 | -  | - |   |
| + November tl.     | 1 | 6  | 7 |   |
| + Prev.Ack.        | 4 | 13 | 6 |   |
| + Total to date    | 6 | -  | 1 |   |

| + N.Z.C.A. RECEIPTS |     | £  | s | d |
|---------------------|-----|----|---|---|
| + J.McCrea          | 5   | -  | - |   |
| + Hamilton          | 5   | -  | - |   |
| + North Shore       | 5   | 10 | - |   |
| + Dominion Road     | 3   | -  | - |   |
| + A.L.Fletcher      | 10  | -  | - |   |
| + Ll.Meredith       | 10  | -  | - |   |
| + November Tl.      | 19  | 10 | - |   |
| + Prev.Ack.         | 15  | 17 | - |   |
| + Total to date     | £35 | 7  | - |   |

| + PROMISED |   | £ | s | d |
|------------|---|---|---|---|
| + Balance  | 6 | 1 | - |   |

| + COMBINED FUNDS |     | £  | s | d |
|------------------|-----|----|---|---|
| + CN Tours Fund  | 40  | 12 | 6 |   |
| + CN Penny Fund  | 6   | -  | 1 |   |
| + NZCA Fund      | 35  | 7  | - |   |
| + Total cash     | 81  | 19 | 7 |   |
| + Promised       | 6   | 1  | - |   |
| + Grand total    | £88 | -  | 7 |   |

"Chess News" is printed and published by E.G.A.Frost, 43 Wilton Rd., Wadestown, Wellington. Duplicating by Dominion Office Supplies, Ltd., Panama St., Wellington. December 11, 1958.