

The New Zealand Chessplayer

No. 67

CHESS IN NEW ZEALAND (8 games)
Wellington Labour Weekend Tournament

CHESS OVERSEAS (4 games)

ASSOCIATION NEWS

AROUND THE CLUBS

QUIZZES AND PROBLEMS

BOOK REVIEW

20 pages packed with games and news

OTAGO CHESS CLUB

DUKE'S BUILDING, CARGILL'S CORNER - DUNEDIN

WEDNESDAY and SATURDAY, 7.30 p.m.

President: I. D. HAYES

Secretary: R. J. LOCKHART. P.O. Box 385. Telephone 77-197 (Bus. Hours.)

VISITORS ARE ALWAYS CORDIALLY WELCOME

DOMINION ROAD CHESS CLUB

225 DOMINION ROAD (Walters Road Corner) - AUCKLAND

TUESDAYS AND FRIDAY, 7 to 11 p.m.

★

Hon. Secretary: B. C. MENZIES. 18 Wharf Rd., Herne Bay

President: T. H. PHILLIPS

AUCKLAND CHESS CLUB [Inc.]

THIRD FLOOR, HIS MAJESTY'S ARCADE, QUEEN STREET - AUCKLAND

President: F. VINCENT.

Secretary: J. BOLLEE.

CLUB NIGHTS . . . MONDAY AND THURSDAY

Telephone 30-360

OPEN AFTERNOONS . . . MONDAY TO FRIDAY

Civic Chess Club

37 DIXON STREET - WELLINGTON

— VISITORS WELCOME —

FRIDAY NIGHTS . . . 7.30 to 11

ALSO TUESDAY NIGHTS—7.30 to 11—at the V.I.C. HOTEL

154 Cuba Street, Wellington

★

President: T. W. ROSS

Secretary: L. H. COHEN. Telephone 40-033

The

No. 67

Edi

Prob

Council of the N
is to be commended o
publish what it call
on remits placed bef
becoming standard pr
sations. Two often
asked to vote on rem
ledge or understandi
about. This may acc
frequency with which
from voting on certa
context, Council's i

One aspect, howe
worry. In most orga
this practice the no
the "explanatory not
the affiliate respon
Does Council intend
ure? Its latest Bull
impression that it m
ing" itself. And the

For isn't there
that Council might s
of pure explanation
advocacy? Won't this
issue and influence
fairly?

This danger is
by the Council's fi
prescriptive - on a p

The New Zealand Chessplayer

No. 67

SEPTEMBER - OCTOBER, 1958

Editor: H. F. POBAR, 2 Waripori Street, Wellington, N.Z.

Sub Editor: S. DARTNALL

Games Editor: J. D. STEELE

Problem Editor: H. HEWITT, 88 Kenmure Road, Dunedin.

Registered at the G.P.O. Wellington, as a Magazine

Council of the New Zealand Chess Assn- is to be commended on its new proposal to publish what it calls "explanatory notes" on remits placed before affiliates. This is becoming standard practice in many organisations. Two often clubs or leagues are asked to vote on remits with little knowledge or understanding of what they are all about. This may account for the relative frequency with which affiliates abstain from voting on certain questions. In this context, Council's idea is a good one.

One aspect, however, gives us cause to worry. In most organisations which follow this practice the normal procedure is for the "explanatory notes" to be furnished by the affiliate responsible for the remit. Does Council intend to follow this procedure? Its latest Bulletin gives a distinct impression that it means to do the "explaining" itself. And therein we see danger.

For isn't there a strong possibility that Council might stray from the function of pure explanation into the field of advocacy? Won't this tend to pre-judge the issue and influence some affiliates unfairly?

This danger is, in fact, illustrated by the Council's first exercise of its prerogative - on a remit emanating

prerogative - on a remit emanating from the Wellington League asking that "the N.Z. Chessplayer be the official organ of the N.Z.C.A. as it was previously". Incidentally in publishing the remit the Bulletin omitted the words we have underlined, which we suggest, are not without some significance. But that is by the way.

What concerns us most is the nature of Council's note to the remit, to the effect that the "Bulletin is the official publication of the Association and it may not be desirable to have the magazine as the official organ. Whatever this may mean exactly, it seems to us to carry far more opinion than explanation.

There is nothing unreasonable in Council making recommendations where it believes itself to be in possession of facts not ordinarily available to affiliates. But if it wants to make a recommendation it should state it clearly and give reasons. It should not disguise its views as "explanation" which should properly be left to the sponsoring affiliate.

We hope Council will take note of this and ensure that its new practice works fairly. For, as we said earlier, fundamentally the idea is a good one.

BOOK REVIEW

XXXXXXXXXXXXXXXXXXXXXXXXXXXXXXXXXXXX

THE MODERN TWO-MOVE CHESS PROBLEM

Published by MUSEUM PRESS. Problems by Comins Mansfield. Commentary by B.Harley.

An introduction to the problem world with 100 of the best problems of one of the acknowledged leaders in the field, and a detailed explanation of the strategy involved by the well-known chess editor Brian Harley. This book is an interesting way of becoming acquainted with a branch of the game all too little understood by the practical player, but with hidden beauties all its own.

Chessplayers who do not look into the problem sphere are definitely missing an interesting phase of the game. (11/6)

"INSTRUCTION TO YOUNG CHESSPLAYERS"

By H.Golombek.

Published by MUSEUM PRESS: (13/6)

H.Golombek, three times British Champion has turned out a fine book, full of useful advice to players of all ages and particularly those who have passed the "wood-shifting" stage and seek sound advice on how to improve. Mr Golombek's precepts, copiously illustrated from actual play, will give players of any class food for thought, and cannot but improve any readers understanding of the game.

Both of the above books may be ordered from N.Z.Chessplayer, 2 Waripori St, Wellington.

MASTERTON CHESS CLUB

at the NATIONAL CLUB ROOMS Bannister Street, Masterton

Monday Nights - 7.30 p.m.

VISITORS ALWAYS WELCOME

Hon. Secretary : L. Ball. Tel. 2767M.

PROPOSED CONGRESS SCHEDULE

Saturday 28. Players meeting at 10 am. Round 1 2.00 - 6.00 and then Mon 29: Rd 2 & 3; Tues 30: Rd 4; Wed 31 Rd 5 Thur 1. Rd 6 (afternoon round) Fri 2nd Rd 7 and 8; Sat 3rd Rd 9; Mon 5th Rd 10 & 11; Tues 6th Prizegiving. 10 am. Morning rounds to be from 8.45 - 12.45 Afternoon 2.00 - 6.00 Evening 7.00 - 11.00 Adjourned games will held in between rds.

VENUE:

Hamilton Technical School.

LATE NEWS The following have been selected to play in the Championship. (Surnames only) Bello, Belton, Court, Ericksen, Foulds, Frankel Hutchings, Lep, Lynch, Marsick, Menzies, V. Dijk It is understood that there were 22 entries

WELLINGTON CHESS CLUB

WELLINGTON TAXI BUILDINGS, VIVIAN STREET

TUESDAY and SATURDAY 7.30 p.m.

President : H. J. FULLER.

Hon. Secretary. R. A. GODTSCHALK, 62 Calabar Road, Wellington, E.4.

Telephone 16-552

DANNEVIRKE C.C.

Held 13 March, and the following were elected: PRESIDENT: Mr E.E. SECRETARY: M.R. CLUB CAPTAIN: S.S.

The President at the year's activities meeting expenses of championship, the club credit balance.

The club members the highest for a year 18 players cont ionship which was ru top two in each divi robin to decide the were: 1st G.N. Thorb Menzies 9 pts; 3rd M S. Severinsen 7 pts. cap tourney completl a loss.

During the year series of interclub n North, Pahiatua, Tak pukarau chess club's were so many in that enjoyed by all and e resulted. Results of follows: Takapau 8-3 drew 5 1/2-5 1/2. Pahiatu 4 1/2-5 1/2 in a return ma won 9 1/2-2 1/2 (They hope this year). Against R and against a combin team they won 8 - 4.

There are no sch Miller, a Master at school, has sought p a chess club in the

In the H.B.-E.C. 1957 M. Livingstone f D. Severinsen at 5 pt the winner with 5 1/2 p *****

AUCKLAND C.C.

There was the club championsh ers with 9 pts each

A R O U N D T H E C L U B S

DANNEVIRKE C.C.

Held its annual meeting on 13 March, and the following officers were elected:

- PRESIDENT: Mr E.E.Gibbard
SECRETARY: M.R.Earle
CLUB CAPTAIN: S.Severinsen.

The President after giving a resume of the year's activities, advised that after meeting expenses of the 1957 North Island championship, the club still showed a small credit balance.

The club membership now stands at 22, the highest for a number of years. Last year 18 players contested the club championship which was run in two divisions. The top two in each division played a round robin to decide the winner. Final results were: 1st G.N. Thorby 10 pts; 2nd Dr M.N. Menzies 9 pts; 3rd M.Earle 8 pts and 4th S.Severinsen 7 pts. M.Earle won the handicap tourney completing the season without a loss.

During the year the club played a series of interclub matches with Palmerston North, Pahiatua, Takapau, Ruahine and Waipukurau chess club's. (We didn't know there were so many in that area. Ed.) They were enjoyed by all and a number of good games resulted. Results of the matches were as follows: Takapau 8-3 and in a return match drew 5 1/2-5 1/2. Pahiatua drew 5 1/2-5 1/2 and lost 4 1/2-5 1/2 in a return match. Palmerston North won 9 1/2-2 1/2 (They hope to get their revenge this year). Against Ruahine they won 6 - 2; and against a combined Takapau-Waipukurau team they won 8 - 4.

There are no school members, but Dr J. Miller, a Master at the Dannevirke High school, has sought permission to establish a chess club in the school boarding hostel.

In the H.B.-E.C. League championship 1957 M.Livingstone finished 2nd equal with D.Severinsen at 5 pts behind A.Severinsen, the winner with 5 1/2 pts. (M.Earle)

AUCKLAND C.C.

There was an exciting finish to the club championship when the joint leaders with 9 pts each C.A.Rose and J.B.Kay,

met in the 13th and final round. Rose won to take the title. The titleholder R.G. Sutton finished 4th equal.

Final scores were: 1st C.A.Rose 10 pts; 2nd equal R.E.Baayertz and J.B.Kay 9 pts; 4th equal A.H.Douglas and R.J.Sutton 8 1/2; 6th A.L.Fletcher 8; 7th G.Sale 7 1/2 8th G. Challenger 7; 9th equal T.Bollee and Mrs E. Short 6 1/2; 11th equal J.J.Hurley and F.Vincent 4 1/2; 13th G.Trundle 1 1/2; 14th C.Oldridge 0.

Both the Intermediate and Junior tournaments were played as double Round Robin events with six players in each. The intermediate was won by R.Smith with 8 pts; with W.Miller 2nd with 6 pts and one game to play, while the Junior was won by Davies 9 points with Van Zeeland runnerup 8 points.

A clock handicap lightening tournament held on three consecutive Monday nights was won by R.G.Sutton with T.Bollee runner up.

The club's A team (Sutton, Velickick, Rose Douglas, Fletcher and Leith) was undefeated in winning the A grade inter-club title.

On the 29th of May a very enjoyable and instructive time was had by all concerned, when a Consultation match between teams captained by O.Sarapu and J.R.Phillips, was held. The result was a well fought draw.

(J.B.Kay)

DOMINION ROAD C.C.

Results of the D.R.C.C. Tournaments are as follows:

CHAMPIONSHIP

O.Sarapu 6 1/2; J.R.Phillips 5 1/2; G.Stringer 5 1/2 F.A.Foulds 4; B.Menzies 3 1/2; A.G.Rollands 2 S.van Dam 1. T.H.Phillips 0.

INTERMEDIATE

- (a) B.Douglas 4 1/2; T.Free 4.
(b) M.Fournier 4; Miss P.S.Cross 3.
(c) E.Moon 4; R.King 3.

AUCKLAND SCHOOLBOY CHAMPIONSHIP

J.D.Prince 5 1/2; D.Burry 5 1/2
Tuesday night Handicap: H.H.Douglas
Friday Night Handicap: B.Howard.

(O.Lichtwark)

(Around the clubs continued on page 5)

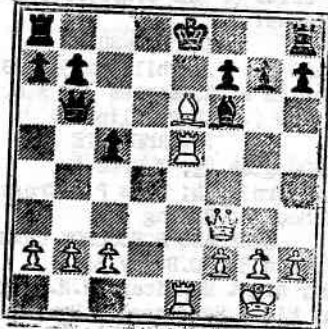
C H E S S I N N E W Z E A L A N D

oo

Three games from the final match in the Bledisloe Cup series comfortably won by Otago 12½ to 7½. Thirteen games were finalised at close of play - a very good result by both teams; which shows what can be done if both sides play the match energetically. (Notes by Dr R. Gardner)

R.A.Rasa at Board 1 for Otago was pitted against the N.Z. master O.Sarapu and he justified the confidence of the Otago match committee with an excellent game in which he appeared for a time to have the upper hand. It ended however in a draw.

	RASA	SARAPU
1	P - Q4	N - QB3
2	N - QB3	P - B4
3	P - Q5	P - K3
4	P - K4	P x P
5	P - K5	N - N1
6	Q x P	N - QB3
7	B - QB4	Q - K2
8	N - B3	N - B3
9	Q - Q1	N x P
10	O - O	P - Q3
11	N x N	P x N
12	B - KN5	Q - Q3
13	Q - B3	B - K2
14	QR - Q1	Q - N3
15	N - Q5	N x N
16	R x N	B x B
17	R x Peh	B - K3
18	B x B	B - B3



For those who would like to learn how "active defence" can be achieved a study of this game is recommended. Sarapu seems several times on the brink of defeat, but each time comes up with an ingenious and sharply calculated way to maintain the balance

Rasa Sarapu
19 R(1) - K1 !
Of course! The rook cannot be taken and if PxB? then RxB and wins the Queen.
19 O - O
20 B x Pch K - R1
21 R - K8. Agreed draw.

Game 2. C.H.Rose(Ak) v J.F.Lang(otago)

After an opening in which White seemed to be getting the better of it a slight inaccuracy is seized on by Lang whofinish-ed off the game with vigour.

	ROSE	LANG
1	P - K4	P - K3
2	P - Q4	P - Q4
3	P - K5	

Although the gain of space looks attractive Black can soon strike back at the central pawns. It is noteworthy that this line appears very rarely nowadays in master play.

3	P - QB4
4	P - QB3
5	N - B3
6	B - Q3

Threatening to win the QP
7 P x P
If this is the best White had, his opening plan cannot be said to have succeeded.

7 B x P
(continued on page 6)

(continued from page CIVIC C.C. On the C.C.visit friendly match were is a yearly function each other in turn. took part (Civic nam Z.Frankel 1,D.P.Long ½; Miss McGrath 1, K E.Truyers 0;T.Ross 0 1,G.Tourney 0; Miss

On the 4th October C at Palmerston North morning and returning rounds were played a sulted in a draw 11 the detailed result:
CIVIC SC
R.O'Callahan 0 v T.L J.Howe 1 v W.Bello 1 M.Ponimoni ½ v A.Was J.Bartle 1 v V.Arlid H.F.Pobar ½ v B.Watk M.McGrath ½ v D.Gord L.Eicholtz 1 v F.Wei A.Jenkins 1½ v M.Kop L.Cohen 2 v W.Edward C.Kozero 2 v J.Doherty T.Ross 1 v J.Doherty *****

WELLINGTON'S LABOUR

Twenty one entered which was run in two the Friday night at and concluding on the Mr T.Costello's V.I.C
There were six rou won the first divisio with John Howe and K. with 4 pts each. K.Hu North won the 2nd div H.Drga of Civic with detailed result.(Not 1 J.Ericksen W2, W 2 K.Beyer L1, W 3 J.Howe L1 L 4 B.Marsick D1 L 5 Z.Frankel L1 L 6 M.Ponimoni L1 L 7 O.Thomson L4, W 8 R.E.Court W2 L 9 R.O'Callahan L1 L 10 A.Wassilief L2 L

CIVIC C.C. On the 4th August Upper Hutt C.C. visited the Civic and in a friendly match were defeated 4½ to 2½. This is a yearly function, both clubs visiting each other in turn. The following players took part (Civic names first)
 Z. Frankel 1, D. P. Long 0; E. V. Cuff ½, E. Eason ½; Miss McGrath 1, K. Nysse 0; A. Jenkins 1 E. Truysers 0; T. Ross 0, J. Hoffstead 1; J. Parker 1, G. Tourney 0; Miss Clark 0, B. O'Sullivan 1

On the 4th October Civic visited Scandia at Palmerston North travelling up in the morning and returning the same night. Two rounds were played and the final score resulted in a draw 11 : 11. The following is the detailed result:

CIVIC	SCANDIA ROUNDS 1 & 2.
R. O'Callahan 0	v T. Lep 2
J. Howe 1	v W. Bello 1; A. Wassilief 0
M. Ponimoni ½	v A. Wassilief ½; V. Arlidge 1
J. Bartle 1	v V. Arlidge 1; B. Watkins 0
H. F. Pobar ½	v B. Watkins ½; M. Kopytko 1
M. McGrath ½	v D. Gordon 1½
L. Eicholtz 1	v F. Weil 1; I. Whitson 0
A. Jenkins 1½	v M. Kopytko ½; K. Humphries 0
L. Cohen 2	v W. Edwards 0; G. Edwards 0
C. Kozero 2	v J. Doherty 0; W. Edwards 0
T. Ross 1	v J. Doherty 0; F. Weil 1

WELLINGTON'S LABOUR WEEK-END TOURNAMENT

Twenty one entered for the tournament, which was run in two divisions, starting on the Friday night at the Civic Chess Club and concluding on the Monday afternoon in Mr T. Costello's V.I.C. Private Hotel.

There were six rounds and John Ericksen won the first division easily with 5½ pts, with John Howe and K. Beyer being equal 2nd with 4 pts each. K. Humphries of Palmerston North won the 2nd division with 5 pts from H. Drga of Civic with 4½. Following is the detailed result. (Not in Sonneborne order)

1 J. Ericksen	W2, W3, D4, W5, W6, W9 5½
2 K. Beyer	L1, W4, W6, L8, W9, W10 4
3 J. Howe	L1, L4, W5, W6, W8, W10 4
4 B. Marsick	D1, L2, W3, W7, L8, W10 3½
5 Z. Frankel	L1, L3, L7, W8, W9, W10 3
6 M. Ponimoni	L1, L2, L3, W7, W8, D9 2½
7 O. Thomson	L4, W5, L6, W8, L9, D10 2½
8 R. E. Court	W2, L3, W4, L5, L6, L7 2
9 R. O'Callahan	L1, L2, L5, D6, W7, L10 1½
10 A. Wassilief	L2, L3, L4, L5, D7, W9 1½

2nd Division

K. Humphries	W2, W3, L5, W6, W9, W10 5
2 H. Drga	L1, W4, W5, D8, W9, W10 4½
3 A. Cockroft	L1, W4, D5, W6, W9, D10 4
4 H. Sharp	L2, L3, W5, W6, W7, W10 4
5 D. Goble	W1, L2, D3, L4, W7, W8 3½
6 H. Gottlieb	L1, L3, L4, W8, W9, W11 3
7 Trittenbass	L4, L5, L10, W11, W11, Bye 3
8 M. McGrath	D2, L5, L5, L8, W10, W11 2½
9 A. Jenkins	L1, L3, L4, L6, W8, W11 2
10 C. Donovan	L1, L2, D3, L4, W7, L8 1½
11 G. Bishop	L5, L6, L7, L11, L11, Bye 1

Mr T. Costello was Director of Play.

GISBORNE'S LABOUR WEEK - END TOURNAMENT.

The Gisborne Chess Club's eleventh six round open tournament, was opened by the club patron Mr E. E. Somervell on Saturday morning and continued over the holiday week-end. Visitors from Wellington, Waipukurau and Cambridge, together with local players, in addition to competing for the Meredith challenge cup availed themselves of the opportunity of playing many friendly games with rarely-met opponents.

The tournament was very closely contested - V. Graham (Waipukurau) with 5½ pts winning the cup with H. J. Toye (Gisborne) runner-up only half a point behind. Awards also went to R. Woodford (Wellington) 4 and J. Topp (Waipukurau) 3½, and a novice prize to D. Mogford (Gisborne).

During intervals refreshments served by the club president, Miss S. Dodd and Mrs F Day and others proved a welcome relief from the tension of competitive play.

In complimenting the local club and the Director of Play Mr L1 Meredith on again organising a most successful and enjoyable tournament, Messrs R. Woodford, J. Kyle (Cambridge) and L. Cook (Waipukurau) mentioned the friendly atmosphere which had always prevailed at this series of tournaments as a reason for their frequent visits.

Following is the detailed result:
 1 V. Graham (Wai) 5½; 2 H. J. Toye (Gs) 5; 3 R. J. Woodford (Wn) 4; 4 J. Topp (Wai) 3½; 5 L. Cook (Wai) 3; 6 J. Kyle (CB) 3; 7 E. Barrington (Gs) 3; 8 A. C. Gagen (CB) 3; 9 E. H. Vernon (Gs) 2; 10 D. Mogford (Gs) 1½; 11 R. Kyle (CB) 1½; 12 P. Fischbach (Gs) 1. (Wai=Waipukurau, Wn=Wellington, Gs= Gisborne and CB= Cambridge).

ROSE v LANG continued:
(After White's 7th move.)

If this is the best White had, his opening plan cannot be said to have succeeded.

ROSE	LANG
7	B x P
8 O - O	P - B3

And if Black can "get away" with this move so early his position must be good indeed. However it seems a little premature. 8..., Q-B2 followed by 9...,KN-K2 seems the best line.

9 P - QN4	B - K2
10 R - K1	P x P

Apparently hoping to get the white rook on to K5 and then gain time by attacking it there, but White has an "in-between" move that spoils things. 10..., N x P was better.

11 P - N5!	N - Q1
12 N x P	KN - B3
13 B - N5?	

White could have obtained a very favourable game from 13 P-QR4! and if 13..., P-QR4; 14 B-K3, Q-B2; 15 B-Q4. The continuation chosen is apparently based on an oversight.

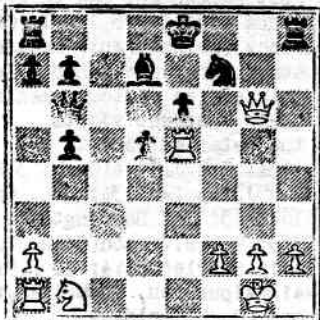
13	N - B2
14 B x N	B x B
15 Q - R5?	

This loses by force. After 15 Nx B the Black King is not well placed.

15	B x N
16 R x B	P - N3!

Now material must go. White's best chance of prolonging the struggle was 17 Q-K2, NxR 18 QxN, castles; 19 N-Q2 with a good hold on the black squares.

17 B x P	P x B
18 Q x P	



ROSE	LANG
18	O - O - O
19 R - K3	

If 19 QxN, R-KB1.

19		
20 N - R3	N - B4	
21 KR - K1	QR - N1	
22 Q - B6	Q - Q3!	

And White resigned a few moves later.
(Notes for this game by GAMES EDITOR.)

GAME 3

H.E.Hewitt(Otago) v B.Douglas(Ak)

HEWITT	DOUGLAS
1 P - K4	P - QB4
2 N - KB3	P - KN3
3 P - Q4	P x P
4 N x P	B - N2
5 B - K3	N - KB3
6 N - QB3	O - O
7 P - K5	N - K1
8 P - KB4	P - B3?

Here 9 N-K6 would win the exchange.

9 B - B4ch	P - Q4
10 B x Pch	K - R1

White missed the immediate win of the exchange but has gained a pawn and the advantage in his development.

11 P - K6	P - KB4
12 Q - B3	N - Q3
13 R - Q1	N - R3
14 P - KR4	P - KR4
15 QN - K2	N - QB2
16 B - N3	Q - K1
17 N - QB3	R - N1
18 N - Q5	Q - Q1
19 N - N4	R - B3
20 N - Q5	R - B1
21 N x N	Q x N
22 B - Q5	R - B3
23 O - O	P - QN4
24 N - B6	R - R1
25 B - Q4	R x P
26 B x Bch	K x B
27 B x R	B x B
28 N - Q4	Resigns.

(Notes by Dr Gardner)

Have you renewed your subscription yet ?



*Naturally**

THE PREFERENCE
IS FOR...

Pilsener Lager

* Skilful *natural* brewing produces the delightful characteristics of Pilsener Lager... in demand everywhere for its sparkling clarity and flavour.



GAMES FROM THE WELLINGTON LABOUR WEEK-END TOURNAMENT.

Here is a fine game by the winner of the Labour week-end tournament in Wellington, by Eriksen against Howe. Eriksen increases the pressure by cleaver and well-calculated play.(Notes by the Games Editor)

ERIKSEN		HOWE	
1	P - K4	P - K4	
2	N - KB3	N - KB3	
3	B - B4	N x P	
4	N - B3	N - KB3	

Trying to retain the pawn by 4...,N x N would be far too risky.

5	N x P	P - Q4
6	B - N3	B - Q2
7	P - Q4	O - O
8	O - O	B - B4 ?
9	P - N4 !	B - K3
10	P - B4	P - B4 ?

Black's game is not too good, but this only opens lines for White.

11	P - B5	P x P
12	P x B	P x N
13	P x Pch	K - R1
14	P - N5	B - Q3
15	B - B4	B x N
16	B x B	N - B3

Black tries hard, but he never has enough.

17	B x BP	N - K5
18	Q x P	Q - N3ch
19	K - R1	N x B
20	P x N	QR - Q1
21	Q - K4	Q - B4
22	R - B5 !	Q x P
23	R - KN1	R - Q5
24	Q - K6	QR - Q1
25	Q - K1	Q - R6
26	R(N1)- B1	N - Q5
27	R(B5)- B4	N x B
28	R - R4 !	Q x Rch

If 28...,Q - Q2; 29 R x Pch forces mate.

29	Q x Q	N - Q7
30	Q - R3 !	Resigns

Mate is forced.

A contrast with Eriksen's win. Here the advance of P-KB4 and P-KN4 is not justified and only results in the weakening of White's position. Beyer plays strongly and simply throughout.(Notes by Games Editor) A.Wassilieff(White) v K.Beyer(Black)

WASSILIEFF		BEYER	
1	P - K4	P - K3	
2	P - Q4	P - Q4	
3	P x P	P x P	
4	N - KB3	B - Q3	
5	B - K2		

Not a good place for the bishop.

5		N - K2
6	B - K3	B - KB4
7	QN - Q2	QN - B3
8	P - B3	P - KR3
9	O - O	O - O
10	N - R4	B - R2
11	P - KB4	Q - Q2
12	P - KN4	

Black's position is too strong to justify such a move. White's pieces are not well co-ordinated but Black's are well placed.

12		QR - K1
13	N - N2	K - R1
14	Q - K1	N - KN1
15	Q - N3	QN - K2
16	N - B3	P - KB3
17	Q - R3	N - N3

Pressure now comes to bear on the weak points in White's position.

18 QR - K1 ?

N - Q2 was necessary. This loses at once. The queen is about to be netted.

18		R x B !
19	N x R	N x P
20	Q - R4	P - KN4
21	N - K5	

The only way to save the queen

21		P x N
22	Q - N3	P x P
23	R x N	B x R
24	Resigns.	

Wellington Week-End

GAME 3

A good win by John... His purposeful play contrast to Roger C... opening. Court seems in this tournament, scalp for Howe.

Frederic COURT

1	P - K4
2	P - Q4
3	N - Q3
4	KN - B3
5	P - Q4
6	P - Q4
7	B - Q4
8	P - B3
9	P - QR
10	Q - R4
11	O - O

Now White's pawn center

12	KP x P
13	P x P
14	N - N3
15	B - K3
16	Q - R4

Preventing White from

17 N - KN

But now Black see's

18	B - B2
19	N - R3
20	Q - N3
21	N x P

This desperate measure 21...,B - Q1 was bet

21	
22	B x NP
23	B - R6
24	B x Bc
25	Q x Qc
26	QR - Q1
27	N - Q4
28	N - N5
29	K - R1

Black can now bring concentration to bear on

30	QR - K1
31	P - B3
32	P x P

Wellington Week-End Tournament:

GAME 3

A good win by John Howe in this tournament. His purposeful play in the opening is in contrast to Roger Court's unusually aimless opening. Court seems to have been off form in this tournament, but this is a notable scalp for Howe.

French Defence			
COURT	HOWE	COURT	HOWE
1	P - K4	P - K3	
2	P - Q3	P - Q4	
3	N - Q2	N - KB3	
4	KN - B3	P - KN3	
5	P - K5	KN - Q2	
6	P - Q4	B - N2	
7	B - Q3	P - QB4	
8	P - B3	N - QB3	
9	P - QR3	Q - N3	
10	Q - R4	O - O	
11	O - O	P - B3	

Now White's pawn centre collapses.

12	KP x P	N x BP	
13	P x P	Q x BP	
14	N - N3	Q - Q3	
15	B - K3	Q - B2	
16	Q - R4	P - K4	

Preventing White from using the square d4.

17	N - KN5	P - K5	
----	---------	--------	--

But now Black see's bigger game.

18	B - B2	P - KR3	
19	N - R3	P - KN4	
20	Q - N3	N - K4	
21	N x P		

This desperate measure is not called for. 21..., B - Q1 was better.

21		P x N	
22	B x NP	N - R2	
23	B - R6	K - R1	
24	B x Bch	Q x B	
25	Q x Qch	K x Q	
26	QR - Q1	N - KB3	
27	N - Q4	K - R3	
28	N - N5	R - KN1	
29	K - R1	B - N5	

Black can now bring an overwhelming concentration to bear on the enemy King.

30	QR - K1	N - B5	
31	P - B3	P x P	
32	P x P	B - R6	

	COURT	HOWE
33	R - B2	QR - K1
34	R - QN1	N - K6
35	B - Q3	B - N7ch
36	R x B	N x R
37	N x P7	R - K8ch
38	R x R	N x R
39	B - K2	N - R4
40	N - N5	N - B5
41	B - B1	N x P
42	N - Q4	Resigns.

PROBLEM SECTION

It is with a sense of loss that we lose the services of Mr H. Hewitt as Problem Editor. It is, as he points out, entirely due to domestic affairs that cause him to give up this section. We hope that he will one day be able to again take up his pen and join us in our work for Chess in N.Z.

Mr S. Dartnall our sub-Editor who has turned out some very fine Editorials, has undertaken to fill the gap temporarily until someone interested enough offers to do the job - we hope that won't be too long.

Mr Dartnall's address is:

33 Inlay Crescent,
Wellington N4.

B.C.M. Chess Magazine 28/- per annum.
CHESS " " 30/- " "

We accept orders for the above.

North Shore Chess Club

Takapuna Croquet Club Rooms
8 Auburn St., Takapuna

MEETS EVERY MONDAY NIGHT
AT 7-30 p.m.

A varied programme is available for all classes of members and any visitor is welcome.

J. S. ALEXANDER, Hon Secretary,
P.O. Box 999, Auckland. Phone 42-963

Wellington Labour Week-End Tournament:
GAME 4

Max Ponimoni starts off with a bang in Round 1 of the week-end tournament against Roger Court, which should have given him a boost, but he managed only one more win and a draw to finish 6th. (Notes by The Editor)

COURT	PONIMONI
1 P - Q4	P - Q4
2 P - QB4	P - K3
3 N - QB3	P - KB4
4 N - KB3	P - QB3
5 Q - B2	N - KB3
6 B - N5	B - K2
7 P - K3	O - O
8 N - K5	QN - Q2
9 P - B3	N x N
10 P x N	N - Q2
11 B x B	Q x B
12 P - B4	N - B4
13 B - K2	B - Q2
14 O - O	QR - B1
15 P - QR3	N - K5
16 N x N	BP x N
17 P - QB5	P - KN4 !
18 P - QN4	P x P
19 P x P	

Giving Black two passed pawns that are the main cause of White's downfall.

19	B - K1
20 QR - N1	B - N3 !
21 R - N3	P - Q5

And Black puts them to work.

22 Q - Q1	QR - Q1
23 R - N3	K - R1
24 B - R5	B - B4
25 R - N3	P - Q6
26 P - KN4	R - KN1
27 K - R1	B - N3
28 B x B	R x B
29 R - K1	Q - Q2
30 P - R3	

Of course not RxP because of the pin Q-Q4.

30	Q - Q5 !
----	----------

Getting ready for the kill.

31 R - QN1	P - K6
32 P - QN5	

Apparently aimed at chasing the queen away with R - N4; but he is too late.

32	Q - K5ch
----	----------

COURT	PONIMONI
33 R - N1	Q x P
34 R - N2	P x P
35 R x P	

Well this rook has been hopping from one place to another without doing anything so it might just as well do this.

35	Q - N6ch
36 K - R1	Q x RPch
37 K - N1	R x Pch

Oh Death, where is thy sting or grave thy victory - or anything worse than this.

38	Q x R
----	-------

What else other than resign!

38	Q x Qch
39 K - B1	

Whaffor?

39	R - B1 mate.
----	--------------

GAME 5

Bruse Marsick makes a sortie with his queen and loses it - a surprising mistake for a player of Marsick's calibre, but then grandmasters make mistakes too.

K. Beyer (White) v B.H.P. Marsick (Black)
 (Notes by the Editor)

King's Indian.

BEYER	MARSICK
1 P - Q4	N - KB3
2 N - KB3	P - KN3
3 P - B4	B - N2
4 N - B3	O - O
5 P - K4	P - Q3
6 B - K2	QN - Q2
7 P - KR3	P - B4
8 P - Q5	Q - R4 ?
9 B - Q2	N - K1
10 O - O	N - R3

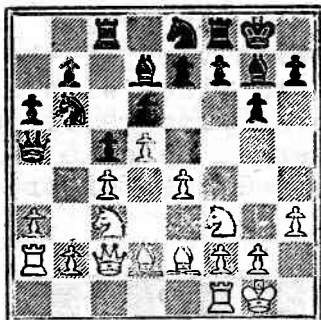
Blocking his queen's line of retreat nicely

11 Q - B2	B - Q2
12 P - QR3	R - B1
13 R - R2	P - QR3

Making sure his queen cannot wscap.N - R1 would at least have given the queen a line of retreat.



14	QN -
15	Q x
Getting two pieces	
16	P x
17	P -
18	P x
19	Q -
20	R -
21	R x
22	N -
23	Q x
24	Q x
25	Q x
26	Q -
27	N -
28	B -
29	B -
30	Q -
Threatening mate.	
30	
31	R -
Whatever Black does	
32	Q -
33	Q x
34	R x
35	Q -



14 QN - N5 ! Q x B
 15 Q x Q P x N

Getting two pieces for his queen.

16 P x P P - B5
 17 P - QR4 ! P - B6
 18 P x P KB x P
 19 Q - K3 B - R4
 20 R - B1 P - KB4
 21 R x R B x R
 22 N - Q4 P x P
 23 Q x P N - B3
 24 Q x KP KN x P
 25 Q x QP B - QN5
 26 Q - N3 B - QB4
 27 N - B3 R - K1
 28 B - Q1 N - N6
 29 B - N3ch K - R1 ?
 30 Q - R4

Threatening mate.

30 K - N2
 31 R - B2 B - K2

Whatever Black does, he must lose a piece.

32 Q - Q4ch B - B3
 33 Q x N(6) B - B4
 34 R x N ! B x R
 35 Q - B7ch Resigns.

CANTERBURY C.C. Have just published their 92nd annual report for the year 1958. The following are points of interest: Membership 70, made up of 7 life, 7 lady, 8 schoolboy, 7 country and 41 ordinary members.

Interclub visits were exchanged between the Ashburton, Lincoln & North Beach clubs.

The formation of a Canterbury League was postponed as it was found that only three clubs were interested.

Mr E.B.Miles was elected a life member

The following officers were elected.

- President: R.W.Smith
- Vice-presidents: Miss A.Wellard-King and R.M.Broadbent.
- Hon Secretary: R.S.Abbott.
- Hon Treasurer: F.R.Best.
- Hon Auditor: S.Hinden.
- Hon Tournament Secretary: A.J.Nyman.
- Committee: Mrs R.S.Abbott, Messrs J.Hunter, A.S.Hollander, R.van de Bel and C.W.Taylor.

Competition results:
 Senior: 1 F.P.Hutchings 9 pts.
 2 L.J.Walpole 8½;
 3 O.C.Chandler and R.W.Smith 6½.

Intermediate: 1 R.S.Abbott 5½
 2 D.Hewison and C.W.Taylor 3

Junior:
 1 S.F.Zucker 6; 2 F.R.Best 6;
 3 E.B. Miles 5.

Hart Memorial: F.P.Hutchings, 2 J.Hunter,
 3 L.J.Walpole.

Duff Cup: R.W.Smith,
 Hollander Rook: W. Taylor.
 Improvers Cup: M.W.Taylor.

GAMES FROM OVERSEAS

XX

Canada's Yanofsky, a boy wonder twenty years ago, showed that he retained his ranking with very little recent practice when he finished in fifth place with seven points (but only 1½ pts behind the joint winners, Gilgoric and Reshevsky) at Dallas last December. Here is a good win from that tournament. (Notes by the Games Editor)

	Canada	v	Iceland.
	YANOFSKY		OLAFSSON
1	P - K4		P - QB4
2	N - KB3		N - QB3
3	P - Q4		P x P
4	N x P		N - B3
5	N - QB3		P - Q3
6	B - KN5		P - K3
7	Q - Q2		P - QR3

As a one-time staunch adherent to this line as Black I am interested to see that Olafsson soon finds himself in the same difficulties as I found. Perhaps 7...B-K2 is the best line.

8	O - O - O		B - Q2
9	P - B4		R - B1
10	N - B3		

Now P-K5 is a standing threat.

10			Q - R4
----	--	--	--------

Preventing the immediate P-K5 by tactical means. (11...N - QN5)

11	K - N1		P - QN4
12	P - K5!		

But now, as Yanofsky shows, this thrust is playable, and exposed King and undeveloped K-side become a liability.

12			P - N5
13	P x N		P x N
14	P x NP		B x P
15	Q x QP		R - B2

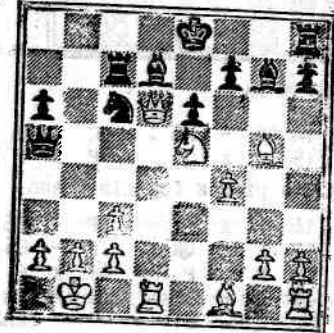
16 N - K5 See Diagram

If 16...B-KB1; not 17 NxN, Q-N3! but 17 N-B4

17	P x B		
----	-------	--	--

Black's weakness on the dark squares is apparent.

17			R - N1
18	P - KR4		P x P
19	B - B5		R - QN2



After White's 16th

20	R - R3		Q - B2
21	Q x Q		R x Q
22	R - QB3!		

The exchange of Queens brings no relief. White's pieces dominate the board.

22			R - N5
23	P - QR3		R - R5
24	B - K2		R - R4
25	B - B3		K - B1
26	B x N		R x B
27	R x B!		Resigns.

ANNOTATIONS!

Several have written in re the above - as a result of Mr A.Scott's annotation and the other games that followed his of past years. The majority seem to think that the present day type is to be preferred. Two stated that they did not bother about the annotations in any case. Nevertheless they were a change weren't they? (Ed.)

The following "CHESS", both first is from Round 11 of the 1954-55 Tournament.

A fine example of the on the long diagonal economical mating net outside of composed the net only at the S.Janosevic (White)

	JANOSEVIC
1	P - K4
2	N - KB3
3	P - Q4
4	N x P
5	N - QB3
6	B - KN5
7	B - QB4

New at this stage. Or have been previously

7
Black must not play 7
8 0 - 0 and now
(1)8...Q-B2; 9 BxKP! P
ning attack.
(2)8...P-N4; 9 BxKP!
11 N - Q5 with a s
(3)8...N-N3; 9 B-N3 f
and white has the bet

8 B - N3
9 0 - 0
This is the best plac
many variations of th
the pressure against
can develop by P - KB

10 K - R1
P - B4 at once would
10...Q - N3.

10
11 P - B4
The critical position
vious that Whites QB

11
12 B - KR4

After 12 BxN White wo
sation whatever for B

The following two games are published by courtesy of "CHESS", both being in their "Chess Archives" section. The first is from the Yugoslav Championship 1957; the second from Round 11 of the 1956 World Championship Candidates Tournament.

A fine example of the power of the bishop on the long diagonal. Black weaves a most economical mating net which must be unique outside of composed problems. White escapes the net only at the cost of a lost ending. S. Janosevic (White) v M. Udovcic (Black).

JANOSEVIC	IDOVIC
1 P - K4	P - QB4
2 N - KB3	P - Q3
3 P - Q4	P x P
4 N x P	N - KB3
5 N - QB3	P - QR3
6 B - KN5	P - K3
7 B - QB4	

New at this stage. Only 7 P - B4 or 7 Q-B3 have been previously tried here.

7 B - K2

Black must not play 7..., QN-Q2 because of 8 0 - 0 and now

(1) 8..., Q-B2; 9 BxKP! PxB; 10 NxP with a winning attack.

(2) 8..., P-N4; 9 BxKP! PxB; 10 NxKP, Q-N3; 11 N - Q5 with a strong attack.

(3) 8..., N-N3; 9 B-N3 followed by P-KB4 - B5 and white has the better chances.

8 B - N3	N - B3
9 0 - 0	B - Q2

This is the best place for Black's QB in many variations of the Sicilian, in view of the pressure against his KP which White can develop by P - KB4 - KB5.

10 K - R1

P - B4 at once would come to grief against 10..., Q - N3.

10	0 - 0
11 P - B4	

The critical position. It soon becomes obvious that Whites QB would be better on K3

11	P - R3
12 B - KR4	

After 12 BxN White would have no compensation whatever for Black's two bishops.

12	N x P
----	-------

A familiar operation which frees Black's game completely.

13 B x B

Probably not the best. Knoch points out in the "Chess Review" that 13 QNxN, BxB; 14 NxN (not 14 NxP, NxN; 16 QxN, B-KB3! etc) 14... BxN 15 NxP, B-K2; 16 N-B4 is not bad for White, who has ample compensation, in his active two bishops.

13	N x N(B6)
14 N x N	

Stronger than 14 BxQ? e.g. 14... NxQ; 15 NxN BxN; 16 B-K7, N-K6; 17 KR-B1, NxNP; 18 B x R NxPch, 19 K-N1, N-R6ch; 20 K-B1, KxN and with three pawns for the exchange, Black should win.

14	B x N
15 Q x P	

15 BxQ would have led to the variation of our last note.

15	Q x Q
16 B x Q	KR - Q1
17 B - K5	

A fatal mistake. White underestimates the tactical possibilities arising from the commanding situation of Black's QB. 17 B - B5 would have been sounder.

17 R - Q7!

This combination is deeper than it looks at first sight.

18 R - KN1

Had White played 17 B - B5, then 18 R - B2 would have been possible; on the other hand Black would have had a stronger reply in 17..., N - K5.

18 N - K7!

Even better than 18..., N-K5.

19 KR - Q1	QR - Q1
20 P - B3	

20 RxR, RxR; would have led to play like that in the game

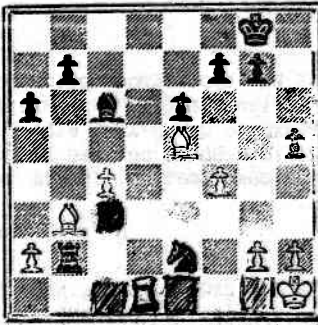
20	P - KR4!
	(next page)

JANOSEVIC v UDOVICIC continued:

JANOSEVIC	UDOVICIC
21 R x R	R x R
22 R - Q1	R x P!

This looks like a blunder, for the rook is now trapped.

23 P - B4



Now there seems nothing better for Black than 23...N-B6; 24 BxN, RxNP; 25 R-Q6 (to answer a rook move by RxB) 25...P-K5; 26 R-Q4 B - B3; with a repetition of moves.

23 P - R5

Shattering! The point of the combination which started with 17...R-Q7! White has no choice.

24 B x R P - R6

Threatening mate in either of two ways.

25 R - Q8ch K - R2
26 B - B2ch P - B4

If Black had not this move at his disposal White would have got there first. Now the sacrificed material must be handed back.

27 R - Q5	P - KN3!
28 B - K4	P x R
29 BP x P	P x B
30 P x B	NP x P
31 P x P	

The ending would equally be won for Black after 31 B-K5, PxPch. The rest is simple.

31	N x P
32 B - B1	N - Q6
33 B - Q2	P - B4
34 K - N2	N - N5
35 P - QR4	N - Q4

36 B - N5	P - B5
37 P - R4	K - N2
38 K - N3	K - B2
39 K - N4	K - K3
40 P - KR5	P x Pch
41 Resigns.	

SPASSKY(White) v BRONSTEIN(Black)

A truly extraordinary game that looks more like the 1850's than the 1950's.

Bronstein sacrifices his queen for two pieces and no immediate threats. And yet only ten moves later a brilliant victory was within his grasp. A game for those who think that adventure has gone out of grand-master chess.

(The notes are by W.Heidenfeld.Abridged).

King's Indian Defence

SPASSKY	BRONSTEIN
1 P - Q4	N - KB3
2 P - QB4	P - KN3
3 N - QB3	B - N2
4 P - K4	P - Q3
5 P - B3	P - K4
6 P - Q5	N - R4
7 B - K3	N - R3
8 Q - Q2	Q - R5ch!

It is clear that if the bishop interposes, Black with 9...Q - K2 has gained an important move, for the bishop is not happily placed on KB2. Black would not only threaten the normal P-KB4, but also such things as N - B5 followed by B - R3 on occasion.

9 P - KN3

Of course!

9 N x P!

Doesn't he see that he loses a piece?

10 Q - KB2

Naturally, if 10 B-B2, BxB and Black comes out a pawn ahead.

10	N x B!!
11 Q x Q	N x B
12 K - B2	N x BP

It was here that the press room split into two camps; the Conservatives (Favouring) White and the revolutionaries (favouring) Black. (next page)

SPAASKY v BRONSTEIN



13 P - N3
14 KN - K2

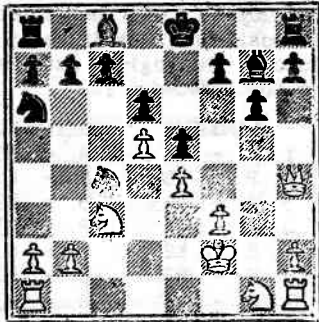
It is doubtful whether tack is really the b always be able to pi One would have thoug to mobilise the quee the only weak spot i may need protection

15 KR - KN
16 K - N2
17 P - R4
18 Q - N3
19 P - R5
20 P x P

This voluntary isolat give Black a splendid White to do? Black t queen by 20...N-Q6 f e.g. 21 Q-R3, R-B2; 22 B-KR5; after which Wh square K4 for his kni the text. Perhaps bes then N-B7; 21 K-R1, N-Q-B2, and White threa course Black need be the position by...P-B strengthen his positio the doubling of rooks

20

There is a two-fold ex blunder. The first is stein saw 20...N-K2! after the game he was



13 P - N3 N - N3
14 KN - K2 P - KB4

It is doubtful whether this immediate attack is really the best, since Black will always be able to play this move later on. One would have thought it more important to mobilise the queen's side, especially as the only weak spot in the black camp, QB2, may need protection later on.

15 KR - KN1 O - O
16 K - N2 B - Q2
17 P - R4 B - KB3
18 Q - N3 N - N5
19 P - R5 N - B1
20 P x P ?

This voluntary isolation of the QP should give Black a splendid game. But what is White to do? Black threatens to trap the queen by 20...N-Q6 followed by...P-B5. If e.g. 21 Q-R3, R-B2; 22 K-R1, N-Q6; 23 Q-B1, B-KR5; after which White hasn't even the square K4 for his knight, which he gets in the text. Perhaps best was 20 QR-Q1 for if then N-B7; 21 K-R1, N-K6; 22 R-Q3, P-B5; 23 Q-B2, and White threatens 24 N-Q1. But of course Black need be in no hurry to close the position by...P-B5 and would prefer to strengthen his position by N-K2 followed by the doubling of rooks on the KB-file.

20 B x P ?

There is a two-fold explanation for this blunder. The first is psychological. Bronstein saw 20...N-K2!!, but as he told me after the game he was convinced that Spaa-

sky wouldn't bluff against him - in other words, that after 21 PxP, N-B4; 22 PxPdbl ch K-R1; 23 Q-K1 there was no mate. This was as far as he went. Actually there is an immediate mate by 23...N-R5ch; 24 K-R1, N-Q6; 25 Q-KB1, B-R6! 26 QxB, N-B7 mate; or of 24 K-N3, N-Q6; 25 Q any, R-N1ch! 26 PxR(Q) ch, B-R6ch. The co-operation of the black minor pieces (a few moves ago peacefully assembled on the extreme Q-side) makes a very artistic impression.

Convinced that his immediate attack would not win through and shrinking from giving up so many pawns, Bronstein now committed a simple oversight - he failed to take into account Spaasky's 21st move, which completely turns the tables. He thought that the quiet move in the text would still leave him with the superior game.

21 R - R4! N - Q6
22 R - QB4

Attacking the vulnerable spot of the black position.

22 N - B4

This leads to the loss of his proud pair of bishops and complete passivity. It seems that Bronstein has been rattled by his oversight, for if 22...B-Q1; 23 N-K4, N-K2 looks a much better formation.

23 N - K4 N - R3
24 N x Bch R x N
25 P - B4

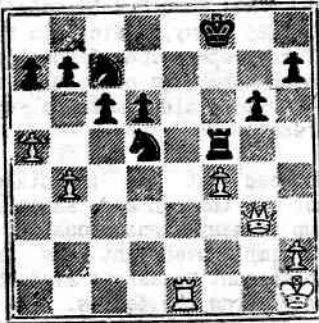
With one of the bishops gone, White does not hesitate in opening up the position. Soon Black will be left with two hobbling knights instead of the powerful bishops.

25 P - K5
26 N - B3 N - K2
27 R - K1 QR - KB1
28 P - N4 P - B3
29 N x P B x N
30 R(B4)x B B x N
31 R - K8

Both players are short of time by now, and the play may not be the most accurate. From here to move 40, Bronstein has to fight against the entry of the white pieces, but whether this would have been more difficult if he had resolutely taken both pawns (31...NxBPch; 32 K-R1, NxP (will still have to be elucidated. (next page)

SPAASKY v BRONSTEIN continued:

	SPAASKY	BRONSTEIN
31		N(R3) - B2
32	R x Rch	K x R
33	K - R1	R - B4



It is not clear why Bronstein does not even now capture the pawn: - 33... NxBP; 34 Q-R4 could have been answered with 34... N-R4. Or 34 R-KB1, N(B2)-Q4; 35 Q-R4, K-N2.

34	Q - R4	N - B3
35	Q - B2	N - N4
36	Q - K2	N - Q4
37	P - R6 !	

Forcing an entry for the queen at last.

37		P x P
38	Q - K8ch	K - N2
39	Q x BP	K - R3
40	Q x RP	N x NP ?

Now he captures the pawn under far less favourable circumstances - in fact, after the text the game is lost by force. 40... NxBP would have at least have kept the rook of his vitals for the time being, because after R-K7 Black could also work with mating threats.

41	Q - N7	N - Q6
42	R - K7	N x P
43	R x Pch	K - N4
44	Q - K7ch	K - N5
45	Q - K3	K - N4
46	P - R4ch	K - N5
47	K - R2	N - R4
48	R - R6	Resigns

FROM THE CANDIDATES TOURNAMENT AT PORTOROZ

(Notes by the Games Editor)

A great game from Portoroz, Larssen is really outplayed from the start, and a brilliant positional sacrifice of the exchange is only the logical outcome of the fine play that preceded it.

	LARSEN	GLIGORIC
1	P - Q4	N - KB3
2	P - QB4	P - KN3
3	N - QB3	B - N2
4	P - K4	P - Q3
5	B - K2	O - O
6	N - B3	P - K4
7	P - Q5	N - R3
8	N - Q2	

An artificial move, which induces Black to make an important advance in the centre.

8		P - B4
9	P - QR3	N - K1
10	P - KR4	P - B4

In contrast to White's over-refinements, Gligoric's play is simple and straightforward.

11	P - R5	N - B3
12	RP x P	RP x P
13	N - B3	N - B2

As a result of the opening Black is ahead in development and ready to take the initiative on either wing. White's King (largely due to his own efforts) has no safe refuge.

14	N - KN5	Q - K2
15	Q - Q3	P - B5
16	B - Q2	P - R3
17	P - KN3	N - N5
18	N - R3	P - QN4 !

Excellent ! White cannot win the pawn (19 PxP, PxP; 20 NxNP, B-R3; 21 Q-N3, KR-N1) and Black has the advantage on both flanks.

19	NP x P	KP x P
20	B x N	

If White takes the BP first, then one excellent reply would be 20... NxBP. But White will later regret the absence of his white square bishop.

20		B x B
21	N x BP	

(next page)

LARSEN v GLIGORIC



21

A fine sacrifice grounds. The two bishops operate powerfully against White's position.

22	B x R
23	Q x P
24	K - Q2

(24 NxN, PxN; 25 Q-B2)

24

25	B - K3
26	KR - KN1
27	P x N
28	QR - K1

White should have given and kept control of the centre, although Black could have done so and played 28... Q-K4.

28

29	Q - N3
30	Q x P

Otherwise 30... Q - K4

30

31	Q - B4
32	K - K2
33	K - B3
34	K - K2
35	Resigns.

We take this opportunity to thank our readers a MERRY CHRISTMAS
NEW YEAR

ASSOCIATION NEWS

The Association's Bulletin contains the following points of interest:

CONGRESS:1958/59 (See page for this item)
 " 1959/60: To be held in Dunedin.

Next North Island Championship will be run by the Scandia Club Palmerston North.

BLEDISLOE CUP: Won by Otago.

RODNEY PHILLIPS FUND: Stood at £47/10/-.
 (Note: We will gladly accept donations to this fund and will acknowledge them in the columns, now that the fund has been declared official)

REMITTS

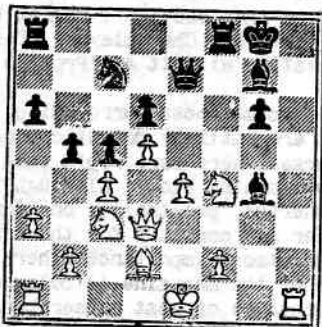
In favour of Round Robin 27½ to 9½
 Affiliation fees: To stay the same, 4/- per affiliated member.

AUSTRALIAN CHAMPIONSHIP 1058/59. Council donated £35 each to Ortvin Sarapu and Rodney Phillips to assist them with their fares. Rodney is also to represent N.Z. in the World Junior Championship 1959. (We note that the Australian Championship is an open one played by the Swiss System, which is not good enough for New Zealand.)

NEW RULE: Council resolved that finalists in a Round Robin tournament who have the same score shall be declared EQUAL WINNERS and shall hold the TITLE JOINTLY. (Note: We doubt very much if Council has the authority to alter the rules or the constitution of the Association without it being first submitted as a remit by an affiliate and then voted upon in the normal way. The constitution itself expressly forbids it and sets out the method that must be used in altering or amending the rules.)

BALANCE SHEET

Shows an Excess of Expenditure of £69/18/1 for the year. Printing of Bulletins and rules cost £42/5/-. Affiliates fees were £50/-/3 (collected).



21 R x N!!

A fine sacrifice based on positional grounds. The two bishops are going to operate powerfully against the weak points in White's position.

22 B x R P x P
 23 Q x P N - N4
 24 K - Q2

(24 NxN, PxN; 25 Q-B2, B-B6 is even worse.)

24 R - KB1
 25 B - K3 B - B6
 26 KR - KN1 N x N
 27 P x N B x KP
 28 QR - K1

White should have given back the exchange and kept control of the QNfile by 28 QR-N1 although Black could have refused the offer and played 28...Q-K4 followed by B x QP

28 B - B4
 29 Q - N3? P - B5!
 30 Q x P

Otherwise 30...Q - K6 is fatal.

30 R - B1
 31 Q - B4 Q - N2!
 32 K - K2 Q - N4ch
 33 K - B3 Q x Pch
 34 K - K2 B - Q6ch
 35 Resigns.

We take this opportunity to Wish our readers a MERRY CHRISTMAS AND A HAPPY NEW YEAR. N.Z.C.P.

We take this opportunity of extending our Good Wishes to Rodney Phillips and Ortvin Sarapu in the Australian Championship. GOOD LUCK TO YOU BOTH. N.Z.C.P.

P R O B L E M S E C T I O N

SOLUTIONS

No 91: R - B4. 92: K - R3. 93 Q - Q6.
94: R - R4. 95: K - B1. 96: B - B6

VARIATIONS No 96

- 1)....,P - R3 or R4; 2 RxPch, K-R1 or R2
3 RxP or R-R6 mate.
- 2)....,B-K2; 2 R-N7ch, KxB or R1; 3 R - N8.
- 3)....,Any; 2 B-R6, Any; 3 R - N8
- 4)....,K-R1; 2 B-N7ch, K-N1; 3 R - K7.

POSSIBLE 17

LADDER

Dr N.E.H.Fulton	18	17	35
N.A.Palmer	18	17	35
G.Severinsen	18	17	35
A.T.Scott	18	15	33
R.S.Abbott	14	13	27
B.G.Murphy	15	11	26
T.C.C.Scott	6	14	20
D.G.Brunst	2	17	19
I. Roffey	5	13	18
J.J.Marlow	8	8	16
C.T. Durrant*	-	15	15
G.S.Meakin	15	--	15
C.Huygens	6	8	14
Mrs Spens-Black	6	8	14
J.L.Beckett*	-	11	11

*New Solvers: WELCOME

- (91) Everyone is away to a flying start.
- (92) This one started the trouble for three solvers. B-K3 is easily defeated by R-B7ch B-QR7 is defeated by the same move. B-QB5 is just defeated by RxKB. White cannot play N-B3ch because of KxB.

(93) A tale of woe to no less than 9 solvers 6 played KR-B4 and this is defeated by the cunning move Q-Q6 which frees Q7 for Black. RxQ just fails due to PxR. One solver sent an impossible move R-B5. R-N5 is defeated by Q-K5, RxQch is not good enough because of K-Q7. Q-N8 is defeated by Q-KN4 preventing all checks by pinning the R and retaining the option of interposing or capturing on a white Q check. A particularly tricky one.

(94) Only one solver crashed on this one. RxN is defeated two ways. P-K4 or RxP

(95) One solver missed out again on this one. R-B2 being defeated by R - R8ch.

(96) Most of the points dropped here were mainly due to too few variations.

To all the many solvers and those interested in this section I regret that this issue of the "N.Z.Chessplayer" terminates my association with it as "Problem Editor"

The circumstances surrounding my retirement are entirely domestic and although not unforeseen were more rapid than anticipated some months ago. Although the work is not onerous, punctuality on forwarding the ladder and comments for the next issue is of the utmost importance otherwise publication of the magazine is delayed to the great annoyance of most subscribers. Being unable to complete my copy until after the closing date, it is halfway through the month before the Editor gets the magazine completed for distribution. It is due to this time limit that I am compelled to hand this job on, as my end of the month movements could become so erratic as to prevent my copy arriving in Wellington until three or more weeks after closing date, which is neither satisfactory to the Editor nor the subscribers.

I appeal on behalf of Mr H.Pobar for someone interested in the continuance of this section to step into the breach and carry on.

I would like to thank all those who have supported this column both by solving and by correspondence, it is only by such interest that this section will keep flourishing.

As you are all aware this magazine went into recess some three years ago and was revived by Mr Pobar in September 1955, who has spent an enormous amount of time and probably money in establishing this magazine amongst Chessplayers. The financial side of this magazine has always been a headache and only numerous subscribers can keep it going. It is a tribute to the indomitable will of Mr Pobar that this magazine has continued to function, and my main regret is that any future association I may have with Mr Pobar cannot be as close as it was during the period we spent together with the N.Z.Chessplayer.

H.Hewitt.

Mr S.Dartnall of 33 Imlay Crescent Wellington N5, has kindly consented to carry on in the meantime.

LADDER

G.Severinsen	21
B.Menzies	22
K.R.Austin	22
Dr N.E.H.Fulton	22
Dr J.Filmer	13
A.T.Scott	15
B.G.Murphy	10
Mrs Spens-Black	18
D.W.Thompson	--
C.Huygens	6

POSSIBLE 22

CLOSING DATE: 22 DE
Solutions sent in ea
will be appreciated.

No 13 4 Pts.



White to mate in 1
(This is not an ordinary
but from an actual
moves and mates in 1)

No 14 8 pts



White to move and
(Will have a pawn ac
tage.)

QUIZZ SECTION

LADDER

G. Severinsen	21	35	56
B. Menzies	22	33	55
K. R. Austin	22	26	48
Dr. N. E. H. Fulton	22	22	44
Dr. J. Filmer	13	30	43
A. T. Scott	15	24	39
B. G. Murphy	10	27	37
Mrs Spens-Black	18	19	37
D. W. Thompson	--	24	24
C. Huygens	6	3	9

POSSIBLE 22

SOLUTIONS

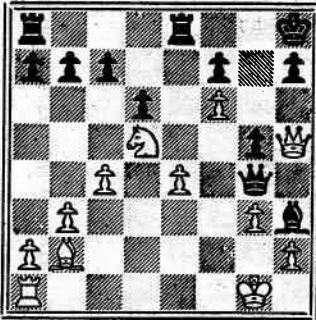
- (9) Q-QR2, K-R1; 2 Q-QN2. R-N1; 3 N-N6ch, PxN; 4 Q-KR2 m
- 10) N-R6ch, K-R2; 2 N-B5, PxN; 3 Q-R6ch, K-N1; 4 Q-N5ch m
- 11) Q-R6ch, KxQ; 2 N(R4)-B5ch, BxN; 3 NxBeh, K-R4; 4 P-KN4 KxP; 5 R-N5ch, K-R4; 6 B-K2 mate.
- 12) N-N6ch, K-N1; 2 R-KR2, QxR; 3 B-K5ch, QxB; 4 N-Q7ch, K-B1 or B2; 5 NxQ and wins.

COMMENT

- 9) Very neat but only caught three. One gave three variations; all wrong. Two gave 2 Q-K5(7) these being defeated by 2...R - N8ch.
- 10) This one caught four (one did not give it a try). One lost a point through wrong annotation. The solution speaks for itself to those who missed.
- 11) There were two possible variations to this one, so full marks have been given for either of them. One solver gave a mate in five, but was lucky enough to include the second variation. One lost a point by giving an ambiguous move otherwise all found the solution.
- 12) We thought this one quite good-but only two missed. One of them gave three variations - all wrong. 1...PxN would result in a mate in four. 1...K-N1; 2 N-Q7ch, K-B1 is defeated by 2...K - R1; back to the original position.

CLOSING DATE: 22 DECEMBER
Solutions sent in earlier will be appreciated.

No 13 4 Pts.



White to mate in four.
(This is not an ordinary problem but from an actual game - White moves and mates in four)

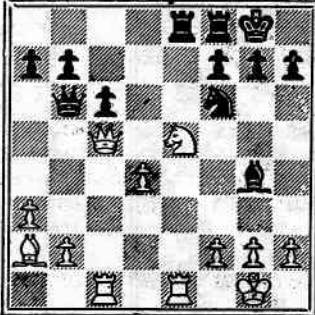
- 11) There were two possible variations to this one, so full marks have been given for either of them. One solver gave a mate in five, but was lucky enough to include the second variation. One lost a point by giving an ambiguous move otherwise all found the solution.
- 12) We thought this one quite good-but only two missed. One of them gave three variations - all wrong. 1...PxN would result in a mate in four. 1...K-N1; 2 N-Q7ch, K-B1 is defeated by 2...K - R1; back to the original position.

How do you solvers feel about composed end-games? do you want them in or out?

We will have to get a trophy? Any offers?

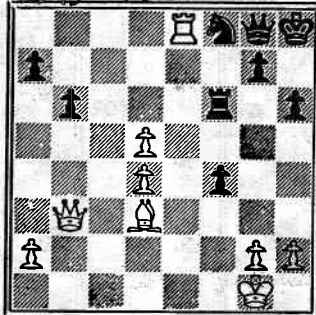
There will definitely be a prize for the winner!

No 14 8 pts



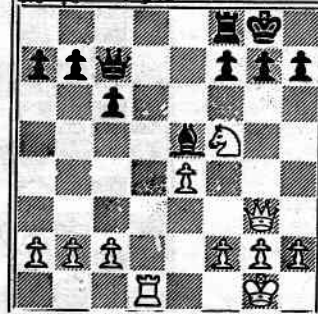
White to move and win
(Will have a pawn advantage.)

No 15 4 Pts



White to move and win

No 16 4 Pts

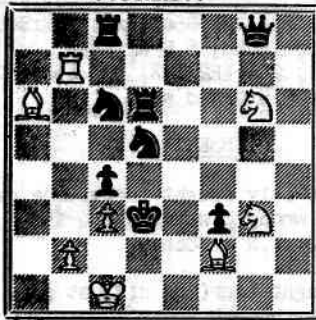


White to move and win

PROBLEMS

F. Bennett

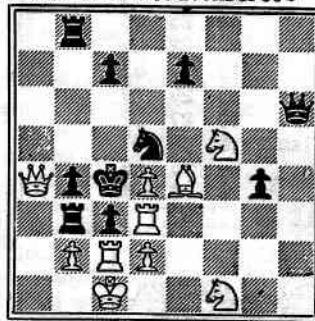
97



8v8 Mate in two
(1st publication)

F.T.Hawes & F.Ravenscroft

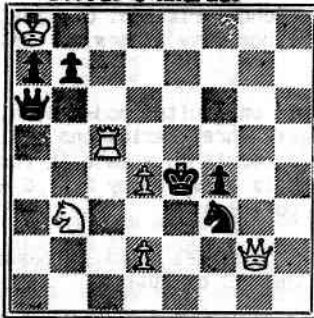
98



10v10 Mate in two
(1st publication)

B.J.de C.Andrade

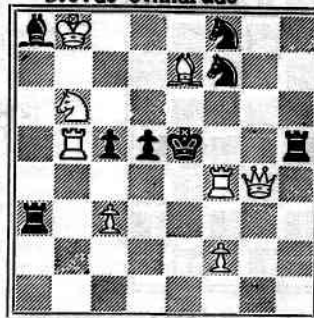
99



6v6 Mate in two
(1st publication)

B.J.de C.Andrade

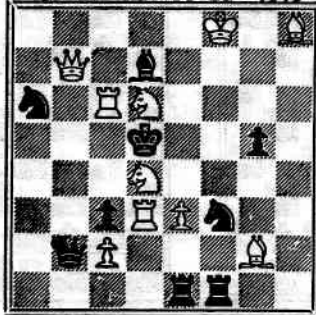
100



8v8 Mate in two
(1st publication)

Comins Mansfield 1919

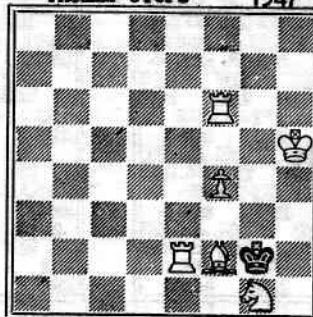
101



10v9 Mate in two

Thomas Giers 1947

102



6v1 Mate in three
("Parallele 50")

SOLUTIONS to be sent to 33 Imley Crescent Wellington N4 no later than 22 December on account of the holiday period.

ONEHUNGA
Cnr. Manukau &
AUC
Tuesdays, 7

N. V. PARKINSON
Telephone

CANTERBURY
ST. LUKE'S SU
Cnr. Peterborough
Str
Tuesdays and Fr
— Visitors Alwa

President :
Hon. Secretary : R. S.
Hon. Treasurer : F. R.

NEW ZEALAND
2 Warpo
WELLINGT
We are Agents for
CHESS (England), Twic
BRITISH CHESS MA
per year

Te A
140 VIV
WE BUY AND

Lithographed

ONEHUNGA CHESS CLUB
Cnr. Manukau & Mt. Albert Roads
AUCKLAND
Tuesdays, 7.30 to 11 p.m.



N. V. PARKINSON, Hon. Secretary
Telephone 597-221

CANTERBURY CHESS CLUB
ST. LUKE'S SUNDAY SCHOOL
Cnr. Peterborough & Manchester
Streets

Tuesdays and Fridays, 7.30 p.m.
— Visitors Always Welcome —



R. W. SMITH
President: ~~SECRETARY~~

Hon. Secretary: R. S. ABBOTT, P.O. Box 965.
Hon. Treasurer: F. R. BEST, P.O. Box 1292

NEW ZEALAND CHESSPLAYER
2 Waripori Street
WELLINGTON, S.1

We are Agents for the following:
CHESS (England), Twice Monthly, per year 30/-.
BRITISH CHESS MAGAZINE, Monthly,
per year 28/-

PAPATOETOE CHESS CLUB
LANDSCAPE ROAD - PAPATOETOE
Wednesdays, 7 to 11 p.m.



Secretary: R. V. CLOSEY. Telephone 646S
63 Hillside Road, Papatoetoe.

OBTAIN YOUR CHESS SUPPLIES FROM
NEW ZEALAND CHESSPLAYER



Score Sheets (4½ x 7½ approx.): On good quality
writing paper. 60 moves with large diagram
on back.

100 sheets 3/9—post free
1000 sheets 35/-—post free

Large Diagrams (3 x 3):

100 2/9—post free
1000 25/-—post free

Tournament Cards (New Type 11 Rounds):
100 cards 30/-

PET LOVERS
VISIT

Te Aro Bird & Pet Shop

140 VIVIAN STREET

WELLINGTON

WE BUY AND SELL PUPPIES, BIRDS, FISH AND ALL PET REQUIREMENTS

Proprietor: **J. W. ROSS**

Lithographed by the Cambridge Printing Co. for the Publisher, H. F. Pobar,
2 Waripori Street, Wellington, S.1, N.Z.

SOUTH'S BOOK SHOP LTD.

My Best Games of Chess

1935-1957

By V. V. SYMSLOV

28/3

Smyslov's best games deserve to stand beside those of the other great masters, past and present. This is a collection of his outstanding games from the start of his career to the present day.

Books for the Learner and the Expert

A GUIDE TO CHESS OPENINGS—by Leonard Barden - - 31/-

An up-to-date account of the latest opening innovations.

1,000 BEST SHORT GAMES OF CHESS—by Irving Chenev - 29/-

The best of short games, gathered together in one volume, for your pleasure and enjoyment.

HOW GOOD IS YOUR CHESS?—by Leonard Barden - - 18/9

A thorough selection of games which have been carefully selected from the latest master tournaments to illustrate various aspects of chess strategy.

SOUTH'S BOOK DEPOT LTD.

8 WILLIS STREET, WELLINGTON

G.P.O. Box 396

Branches at Dunedin, Auckland, Hastings and Lower Hutt

MAIL ORDERS ARE GIVEN PROMPT ATTENTION
