

JULY-AUGUST, 1958

Received twenty Colobes

Price 2/-

The New Zealand Chessplayer

No. 66

BLEDISLOE CUP

SCHOOLBOYS' CHAMPIONSHIPS

GAMES IN NEW ZEALAND

GAMES FROM OVERSEAS

PROBLEMS

QUIZZ

OTAGO CHESS CLUB
DUKE'S BUILDING, CARGILL'S CORNER - DUNEDIN
WEDNESDAY and SATURDAY, 7.30 p.m.

President: I. D. HAYES
Secretary: R. J. LOCKHART. P.O. Box 385. Telephone 77-197 (Bus. Hours.)
VISITORS ARE ALWAYS CORDIALLY WELCOME

DOMINION ROAD CHESS CLUB

225 DOMINION ROAD (Walters Road Corner) - AUCKLAND
TUESDAYS AND FRIDAY, 7 to 11 p.m.

★
Hon. Secretary: B. C. MENZIES. 18 Wharf Rd., Herne Bay
President: T. H. PHILLIPS

AUCKLAND CHESS CLUB [Inc.]
THIRD FLOOR, HIS MAJESTY'S ARCADE, QUEEN STREET - AUCKLAND

President: F. VINCENT. Secretary: J. BOLLEE.
CLUB NIGHTS . . . MONDAY AND THURSDAY

★
Telephone 30-360
OPEN AFTERNOONS . . . MONDAY TO FRIDAY

Civic Chess Club

37 DIXON STREET - WELLINGTON

— VISITORS WELCOME —
FRIDAY NIGHTS . . . 7.30 to 11
ALSO TUESDAY NIGHTS—7.30 to 11—at the V.I.C. HOTEL
154 Cuba Street, Wellington

★
President: T. W. ROSS
Secretary: L. H. COHEN. Telephone 40-033

The

No. 66

Ed

Pro

Isn't it time
the present method
Chess?

Many top-notch
version of the game
is it any wonder? U
or rather lack of
opponents could pla
send in their game
fetched? Perhaps,
in principle from
which actually do
8 or 9 hours play.

The time factor
nised as the specia
chess. Yet nothing
it. This becomes a
as evidence accuma
when in difficultie
advantage of the a
for moves.

The tactic seen
plicated position
of play is approach
all costs and wait
sent be a weakening

During the rec

The New Zealand Chessplayer

No. 66

JULY - AUGUST, 1958

Editor: H. F. POBAR, 2 Waripori Street, Wellington, N.Z.

Sub Editor: S. DARTNALL

Games Editor: J. D. STEELE

Problem Editor: H. HEWITT, 88 Kenmore Road, Dunedin.

Registered at the G.P.O. Wellington, as a Magazine

T E L E G R A P H I C C H E S S

Isn't it time something was done about the present method of playing Telegraphic Chess?

Many top-notch players won't have this version of the game on at any price. And is it any wonder? Under the present rules - or rather lack of them - it would seem that opponents could play one move each and then send in their game for adjudication. Far-fetched? Perhaps, but not so far removed in principle from the 14 - 20 move games which actually do go for adjudication after 8 or 9 hours play.

The time factor has always been recognised as the special bugbear of telegraphic chess. Yet nothing has ever been done about it. This becomes all the more surprising, as evidence accumulates that some players, when in difficulties, are not above taking advantage of the absence of a time limit for moves.

The tactic seems to be - when a complicated position has developed and the end of play is approaching, avoid committal at all costs and wait out time, lest the move sent be a weakening one.

During the recent Auckland-Wellington

Bledisloe Cup match an Auckland player at one board sent a move just inside the final hour. No reply was received, though his opponent could scarcely be said to be in trouble and had three-quarters of an hour in which to find a good one. In the same match a Wellington player suffered the same experience. In his case, however, it was all the more exasperating in that he had given his opponent check and the only reply available was a king move!

Such tactics are not only unsporting - they reduce chess to a farce. It is high time something was done to put an end to them and thus speed up Telegraphic chess.

In these columns we have previously outlined a system which we think would go a long way towards eliminating these abuses. We do not suggest it is perfect or the only system. But it does provide a possible approach to what seems to be a growing problem. If the Association is unwilling to try it out, it could at least insist on the use of clocks - at the top boards anyway.

Telegraphic Chess provides virtually the only means by which players in different centres can meet on a club, league or provincial basis. It is important that it

EDITORIAL continued:

should not be allowed to fall into disrepute. Yet, for want of action to remedy its obvious defects, this, we think, could well happen.

24th U.S.S.R. CHESS CHAMPIONSHIP
(Moscow, January - February 1957)

The tournament book by P.H. Clarke and published by B.C.M. gives all the 231 games with introducing notes to all games and full annotations to about a quarter of them. From the calibre of the players engaged (Tal 1st, Bronstein and Keres 2nd equal, followed by Spasky, Tolush, Petrosian, Boleslavsky, Taimanov and other grandmasters) one would expect plenty of fine games, and the reader would not be disappointed.

For all who want to keep up to date on opening theory, or who would like to learn the correct handling of a position after the "book" finishes, such a book as this can be strongly recommended. For those who seek only the entertainment of plenty of interesting games, this book will be your meat to.

The price is 21/6 and orders will be accepted by the New Zealand Chessplayer,
2 Waripori St, WELLINGTON St.

In our overseas section we reprint two games from the above book as an example.

MASTERTON CHESS CLUB

at the
NATIONAL CLUB ROOMS
Bannister Street, Masterton

Monday Nights - 7.30 p.m.

VISITORS ALWAYS WELCOME

Hon. Secretary: L. Ball. Tel. 2767M.

OTAGO WIN BLEDISLOE CUP!

Although the match between Otago and Auckland was not finalised at close of play nevertheless it appears that Otago has won the Cup again. Their score at the close of play was 9½ out of 15 games, with six wins and seven draws. They confidently expect at least two more wins. As Auckland had not scored any points at close of play, Otago only require one point to win out of seven games, so it can be confidently stated that the issue is beyond doubt.

Results of other matches in this series were: Auckland 17½ v Waikato 2½ (Played over the board) Auckland 12 v Wellington 8; Otago 12½ v Canterbury 7½.

It is understood that Otago are considering forming an Otago League to include Invercargill and Oamaru.

WELLINGTON CHESS CLUB

WELLINGTON TAXI BUILDINGS, VIVIAN STREET

TUESDAY and SATURDAY 7.30 p.m.

President: H. J. FULLER.

Hon. Secretary. R. A. GODTSCHALK, 62 Calabar Road, Wellington, E.4.

Telephone 16-552



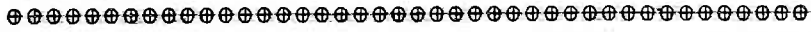
*Naturally**
 THE PREFERENCE
 IS FOR ...

Pilsener Lager

* Skilful *natural* brewing produces the delightful characteristics of Pilsener Lager . . . in demand everywhere for its sparkling clarity and flavour.



C H E S S I N N E W Z E A L A N D



Here is a game submitted by Mr A.T.Scott of Hamilton which was played in the Auckland v Waikato match for the Bledisloe Cup. The game resulted in a draw and there are some unusual features in it. Mr Scott annotated the game and considers that this type of annotation is preferable to the present day type. Readers are invited to comment.

SUTTON SCOTT
1 N - KB3 P - Q4
2 P - QB4 N - KB3
Desperation
3 P x P N x P
4 P - K4 N - N3
5 P - Q4
Establishing a perfect centre. Black is lost
5 B - N5
6 B - K3
Reinforcement
6 P - K3!
Threatens a check!
7 P - KR3 B - R4
8 B - Q3
Double reinforcement
8 N - B3
Black has two powerful Kts side by side. Surely equality.
9 O - O B x N
10 Q x B
White falters under the strain and Black whips off two pawns.
10 N x P
11 B x N Q x B
12 R - Q1 Q x NP
White is lost!
13 N - B3
Temptation. Get thee behind me Satan.
13 P - QB3
14 N - N5 Q - K4
Brilliant tactics!
15 P - QR4
White has nothing better.
15 P - QR3
Black has nothing better.
16 N - Q4 B - Q3
Setting a trap

17 P - QR5 N - Q2
18 Q - N4 P - KR4
19 Q - B3 Q - B5
20 Q x Q
White avoids the trap but his attack has gone.
20 B x Q
So has Black's.
21 QR - N1 N - B4!
22 B - B2! O - O
23 N - N3! N x N!!
24 R x N QR - R2
Black defends brilliantly.
25 R - Q7
Double toe-hold.
25 R - QN1
26 P - N3 B - N4
27 P - K5!! B - Q1!!!
28 B - K4 B x P
Black must win with his Queenside majority.
29 B x P R - Q1
30 R x Reh B x R
31 R x P R x R
32 B x R P - QR4

Drawn.



Whilst on the subject of annotations, a look back into the past brings to light the methods employed in the early days of our chess history. The N.Z. Chess Association used to publish a book on each Congress and various Editors contributed the annotations. Two of these H.L. James and J.A. Connell were outstanding for the humour they managed to put into them. Here are two games from that period which give some idea of the manner in which games were annotated in those far off days.

Game 1 From the 25th Congress 1911 - 1912. (next page)

E.J.Miles (White)

MILES

- 1 P - K
2 N - K
3 B - N
4 B - R
5 O - O
6 R - K

Too obvious for usual and much better seem to be no example international congress tried it against Mar

- 6
7 N x P

The old move N - B3 here, but should be

- 7
8 B - N

Quite wrong, because of time. He should N - B3.

8

Of course! Black g R file gives White g

- 9 RP x N
10 P - Q
11 P x N
12 B - B
13 B x P
14 R x Q
15 R - Q

Having mobilised the he now timidly wi Surely P-QB4 is her B-B7; 16 R-QB, B x Black in the loss o "Vestigia nulla ret watchword, friends.

15

Outdoing his opponer QR-Q1 occupying the given up to him, is if 16 BxP, then R-

- 16 N - Q
17 B - B

Had he advanced his this B could now be position at B3. At Psalmist, kos khora

ANNOTATED BY H.L. JAMES.

E.J. Miles (White) v E.H. Severne (Black)

	MILES	SEVERNE
1	P - K4	P - K4
2	N - KB3	N - QB3
3	B - N5	P - QR3
4	B - R4	N - B3
5	O - O	N x P
6	R - K1	

Too obvious for unthinking adoption the usual and much better move is P - Q4. There seem to be no examples of the text move in international congress play since Didier tried it against Maroczy at Paris in 1900.

6		N - B4
7	N x P	

The old move N - B3 appears to be inferior here, but should be his next one.

7		B - K2
8	B - N3	

Quite wrong, because an inexcusable waste of time. He should resume mobilisation by N - B3.

8		N x B
---	--	-------

Of course! Black gains a move, and the open R file gives White no equivalent.

9	RP x N	O - O
10	P - Q4	N x N
11	P x N	P - Q3
12	B - B4	P x P
13	B x P	Q x Q
14	R x Q	B - B4
15	R - QB1	

Having mobilised this R to some advantage, he now timidly withdraws it from action! Surely P-QB4 is here good enough, for 15... B-B7; 16 R-QB, B x P; 17 N-Q2, results for Black in the loss of the B for two pawns. "Vestigia nulla retrorsum" should be the watchword, friends.

15		P - QB3
----	--	---------

Outdoing his opponent in timidity. Here QR-Q1 occupying the openfile so generously given up to him, is the proper course; for if 16 BxBP, then R-Q2 followed by BxP.

16	N - Q2	KR - K1
17	B - B4	

Had he advanced his QBP on his 15th move, this B could now be posted in its natural position at B3. At B4 it becomes, like the Psalmist, kos khoraboth - an owl of the

wastes.

17		B - B3
18	P - QB3	B - K3

Imitating the wretched strategy of his opponent in regard to the open file. Having got command of it, he should not now block it. QR-Q1 at once is to be preferred to the text move.

19	R - K1	
----	--------	--

Of course! He wakes up at last.

19		QR - Q1
20	P - QN4	B - Q4
21	N - B1	B - K3

Poor, hesitating, scared ecclesiastic! "E don't know where 'e are" seemingly, or where he ought to be.

22	P - B3	P - R3
23	K - B2	R - Q6

At last, when no good purpose can be served by doing so, he plucks up courage to advance.

24	QR - Q1	R x R
----	---------	-------

Another abandonment of the open file! Noble competition in generosity!! But why not KR - Q1?

25	R x R	R - Q1
26	R x Rch	B x R
		Drawn

These exchanges leave nothing but the draw which was agreed to on the 33rd move. The extraordinary dash and daring of both sides in this enthrallingy exciting contest must amaze and delight every beholder. So interesting, you know, my dears!

Game 2 From the 29th Congress 1919 - 1920.

ANNOTATED BY J.A. CONNELL

R.J. Barnes (White) v F.C. Ewen.

	Barnes	Ewen
1	P - K4	P - Q3
2	P - Q4	P - QB4

Surely a novel way of playing the ~~Stoltzen~~ Defence. Mental gymnastics sometimes display genius, but not always.

3	N - KB3	N - KB3
---	---------	---------

And here perhaps the Petroff may avail!

4	B - Q3	B - N5ch
---	--------	----------

Even a taste of the Ruy Lopez reversed may be toothsome.

5	B - K3	P x P
---	--------	-------

Barnes v Ewen continued:

Then "the Roman thought hath struck him"
and at the point of his stilletto an enemy
hath fallen.

6 B x P P - K4

Avault thou palefaced monster. Who shall
dare to unsheath his sword, shall be my
victim here.

7 B - K3

The saint retires to calmer scenes of peace
To pray that Allah may his force increase.

7 B - K2
8 N - B3 B x N
9 Q x B O - O
10 O - O QN - Q2
11 QR - Q1 P - KR3
12 N - K2 N - R2
13 N - N3 N - N4
14 Q - K2 N - R2

This "painful warrior famoused for fight"
May jump about from mornig until night,
In this beguiling fashion; but he can't,
By such abortive tactics, slay an ant.

15 N - B5 N - B4

And here another "belted Knight" takes up
the running;
But where, Oh where is all his strategy or
cunning?

To hari kari he his fell soul has consigned

16 B x N

To lure this Saint to Hades was what was
in his mind.
Etc., Etc., Etc., and Etc.

16 P x B
17 B - N5 O - R4

And now let the curtain be drawn over these
Tragedies 'til some competent Poet may ar-
rise to embalm them in their merited robes

18 N x Bch K - R1
19 B - B4 P - KN3
20 Q - K3 K - N2
21 Q - N3 and Black resigned a
few moves later.

Here are two more games from the North
Island championship that are interesting.
In the first(Phillips v Hutchings)Phillips
plays in his usual style of not missing a
mistake by his opponent, and attacks the
slightest weakness on his opponents part

to the full. In the second game Marsick
demonstrates the power of a pawn, and has
his opponent John Howe on the defensive
from an early stage of the game.

	PHILLIPS	HUTCHINGS
1	P - K4	P - QB4
2	N - KB3	P - KN3
3	P - Q4	P x P
4	N x P	B - N2
5	P - QB4	N - QB3
6	B - K3	N - R3
7	N - QB3	N - KN5
8	Q x N	N x N
9	Q - Q1	P - K4
10	N - N5	N x N
11	P x N	P - Q3
12	B - QB4	B - K3
13	B x B	P x B
14	Q - N3	Q - Q2
15	O - O	O - O
16	KR - Q1	QR - Q1?
17	B x RP	P - N3

Setting a trap

18 B x P R - N1!?

And it is sprung

19 B - B5! R x P

But the trap had a hole in it.

20	Q - QR3	Q - N2
21	B x QP	R - R1
22	Q - R3	R x NP
23	Q x KPch	Q - B2
24	Q x Qch	K x Q
25	P - QR4	R - QB1
26	P - R5	R(1)- B7
27	P - R6	R x P
28	R - KB1!	R x Rch
29	R x Rch	K - K3
30	R - QR1	B - R3
31	B - B5!	Resigns.

	HOWE	MARSICK
1	P - K4	P - K4
2	N - KB3	N - QB3
3	B - N5	P - QR3
4	B - R4	N - B3
5	O - O	B - K2
6	R - K1	P - QN4
7	B - N3	O - O
8	P - B3	P - Q4
9	P - Q4	P x KP
10	P x KP	Q x Q
11	B x Q	P x N

(next page)

HOWE v MARSICK cont

HOWE
12 P x N
13 B x P

The position looks!

14 B - B4
15 N - Q4
16 B - K4
17 QR - Q1
18 N - N3
19 B - B5
20 N x P
21 P x P
22 R - K2
23 R - B3
24 B x N
25 P - N2
26 R - Q1
27 R x R
28 N - N3
29 B - Q1

An oversight surely
on if RxB on account
have been better at
best of it, e.g. 29 N
31 RxB, R-K7 winning

29

Deciding to keep bo
Knight.

30 P x P
31 B - B3

K - N2 was necessary
hopeless anyway.

31

32 Resigns

From the Auckla
graphic match. A s
becoming really int
time. Surely such
convince the Associ
essential in the Bl
(Notes by the Games

J.R.Phillips (White

White

1 P - K4
2 N - KB3
3 B - N5
4 B - R4

HOME v MARSICK continued:

	HOME	MARSICK
12	P x N	B x P
13	B x P	B - Q2

The position looks! even.

14	B - B4	QR - K1
15	N - Q2	N - K4
16	B - K4	P - B4
17	QR - Q1	B - B1
18	N - N3	N - B5
19	B - B1	P - N5
20	N x P	P x P
21	P x P	B x P
22	R - K2	R - Q1
23	R - B1	N - Q7
24	B x N	B x B
25	P - N3	P - QR4
26	R - Q1	B - QN5
27	R x R	R x R
28	N - N3	P - R5
29	B - Q5!?	

An oversight surely as there is not a mate on if RxB on account of B-B1. N-Q4 would have been better although Black has the best of it, e.g. 29 N-Q4, RxB; 30 R-K8ch, B-B1 31 RxB, R-K7 winning the QRP.

29 P x N

Deciding to keep both Bishops and gain the Knight.

30	P x P	K - B1
31	B - B6	

K - N2 was necessary, but the position is hopeless anyway.

31	B - KR6
32	Resigns. (Notes by Editor)

From the Auckland v Wellington Telegraphic match. A sharp struggle which was becoming really interesting at the call of time. Surely such games as this should convince the Association that clocks are essential in the Bledisloe Cup matches. (Notes by the Games Editor: J.D.Steele)

J.R.Phillips (White) v J.E.Eriksen (Black)

	White	Black
1	P - K4	P - K4
2	N - KB3	N - QB3
3	B - N5	P - QR3
4	B - R4	P - Q3

	Phillips	Eriksen
5	P - B4	B - Q2
6	N - B3	P - KN3
7	P - Q4	P x P
8	N x P	B - N2
9	B - K3	N - K4

More usual here is 9...,KN - K2

10 B - N3

White does not want to ease Black's slight congested position by exchanges. However White's pieces now get a little awkwardly placed.

10		N - K2
11	P - B3	P - QB4!
12	N(Q4) - K2	B - K3
13	N - Q5	B x N
14	BP x B	Q - R4ch
15	N - B3	O - O

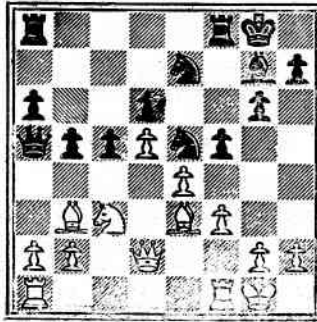
Black has come out of the opening quite well, in fact his prospects look slightly the better.

16 Q - Q2 P - B4

A good move before beginning operations on the Q-side. Now any attempt by White to open lines for attack on the Black King may well rebound on him. However, Black must watch the line he has opened for the White KB.

17 O - O P - QN4?

Now White has a tactical resource that cuts right across Black's well-laid strategic plans. 17...,QR-B1 first appeared better.



18	B x P!	P - N5
19	N - R4	P x B
20	P - Q6ch	P - B5
21	P x N	KR - K1

PHILLIPS v ERIKSEN continued:

22 B - B2 R - Q1
 PHILLIPS ERIKSEN
 23 P - QR3 R - Q1

23...R-Q2 was the move, when after 24 QxP QxQ; 25 PxQ, R-Q7; Black in spite of his pawn down, has slightly the better of it.

24 Q - N5

Gaining a valuable move.

24 KR - Q2
 25 P x P

Adjudicated Drawn.

A pity that this game could not be finished.

CHRISTCHURCH SCHOOLBOYS' CHAMPIONSHIP

Thirty entered for the Christchurch Tournament, but three defaulted leaving 27 to compete in an 8 round Swiss. L.J. Walpole won all his games. C. Smyth and P. Gunby each won 6 and lost 2. On a count-back Smyth was declared the runner-up. Gunby was lucky to win against Taylor who finished 4th as Taylor resigned when in a winning position through an oversight. Taylor would have been the runner-up if he had won this game

Ten schools were represented and this must constitute a record for Christchurch if not for New Zealand. Only one player came from outside Christchurch, he being A. Mulligan from Hinds - Ashburton.

A trophy donated by Mr & Mrs H.R. Abbott was presented to the winner by the President of the Canterbury C.C. Mr G.G. Parkins.

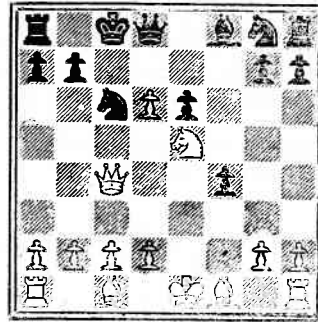
After the presentation Walpole gave an exhibition of simultaneous chess against 19 players. Of the 19, Walpole won 14, drew 1, lost 3 and one game was unfinished.

The following competed:

L.J. Walpole (8), C.A. Smyth (6), P. Gunby (6), M.W. Taylor (5½), G.H. Lawden (5), H. Thompson (5) A. Lagzdins (5), P. Baldwin (4½), F. Kempfers (4½) B. Cope (4½), K. Dawson (4½), D. Bailey (4), G. Scoble (4), C. Richards (4), A.J. Jellicoe (4) E.C. White (3½), W. Chinnery (4), A. Orchard (3½), A. Hulligan (3½), I.R. Kinley (3), A. Bateman (3), van Wyngen (3), B. Davis (2½), P.argas (2½), B. Goodwin (2½), K. Hayes (2½), W. Shaw (½).

Here is a game played in the Christchurch tournament by the winner.

	WALPOLE	GUNBY
1	P - K4	P - K4
2	N - QB3	N - KB3
3	P - B4	P x P?
And this mistake is the start of his woes! P - Q4 is the usual move here.		
4	P - K5	Q - K2
5	Q - K2	N - N1
6	N - B3	P - Q3?
7	N - Q5	Q - Q1
8	P x Pch	B - K3
9	N x Pch	K - Q2
10	N - K5ch	K - B1
11	N x B!	P x N
12	Q - B4ch	N - B3



13 Q x Nch!! P x Q
 14 B - R6ch K - N1
 15 N x P Mate.

We are the N.Z. Agents for B.C.M. 28/- per annum and "CHESS" 30/- " " Score sheets 30/- per 1000 Large diagrams 2/6 " 100.

We can obtain any Chess magazine required, also books from B.C.M. and Chess may be ordered per The N.Z. Chessplayer

WALPOLE
 L.J. Walpole boys' champion of Auckland. Like Walpole's event drew a competitor, MINISTER OF EDUCATION

The Minister Mr F.J. Brooker Memorial and book prizes to

He said that chess encouraged in like to see chess training colleges would have the advantage knew something about

Mr Skoglund and welcomed by Dr J.H. man of the Wellington Pobar.

Mr T. Costello

Detailed results L.J. Walpole (Ch) 6 I.D. Burry (Ak) 4½ (Ch) 3; R. Patterson and E. Kelly (0) ½.

1. Walpole: D2,
2. Prince D1,
3. Burry L1,
4. Flude L1,
5. Smyth L1,
6. Patterson L1,
7. Butler L1,
8. Kelly L1,

The following 2nd round. (Notes J.D. Prince (White BIRDS' 1 P - 2 P -

9
WALPOLE WINS NATIONAL SCHOOLBOYS' CHAMPIONSHIP 1958.

.....
L.J.Walpole of Christchurch won the National school-boys' championship with a clear point lead from J.Prince of Auckland. Walpole, who was runner-up to the national champion, J.R.Phillips, in the 1956 and 1957 schoolboys' events, won 14 consecutive games in the Canterbury and New Zealand events, breaking the sequence with a draw in his last game.

Like Walpole Prince was unbeaten but in the national event drew three games. In third place was the youngest competitor, I.D.Burphy aged 14, of Auckland.

MINISTER OF EDUCATION PRESENTS TROPHIES!!

The Minister Mr Skoglund presented the F.J.Brooker Memorial Trophy to L.J.Walpole and book prizes to J.D.Prince and I.Burphy.

He said that he was rather keen to see chess encouraged in the schools and would like to see chess clubs develop at the training colleges and then school pupils would have the advantage of teachers who knew something about the game.

Mr Skoglund and other visitors were welcomed by Dr J.H.Darwin, and the chairman of the Wellington Chess League Mr H.F.Pobar.

Mr T.Costello was Director of Play.

Detailed results were:

L.J.Walpole (Ch) 6½; J.D.Prince (Ak) 5½; I.D.Burphy (Ak) 4½; D.Flude(Wn) 3½; C.Smyth (Ch) 3; R.Patterson (O) 2½; A.Butler(Wn) 2 and E.Kelly (O) ½.

- | | |
|--------------|----------------------------|
| 1. Walpole: | D2, W3, W4, W5, W6, W7, W8 |
| 2. Prince | D1, D3, W4, D5, W6, W7, W8 |
| 3. Burry | L1, D2, L4, W5, W6, W7, W8 |
| 4. Flude | L1, L2, W3, W5, W6, L7, D8 |
| 5. Smyth | L1, D2, L3, L4, D6, W7, W8 |
| 6. Patterson | L1, L2, L3, L4, D5, W7, W8 |
| 7. Butler | L1, L2, L3, W4, L5, L6, W8 |
| 8. Kelly | L1, L2, L3, D4, L5, L6, L7 |

The following game was played in the 2nd round. (Notes by the winner.)

J.D. Prince (White) v L.J.Walpole(Black)

BIRDS'		OPENING	
1	P - KB4	N - KB3	
2	P - K3	P - Q4	

	PRINCE	WALPOLE
3	N - KB3	B - N5
4	B - K2	QN - Q2
5	O - O	B x N
6	B x B	P - K4
7	P x P	N x P
8	P - Q3	B - K2
9	P - B4	O - O
10	Q - N3	N x Bch
11	R x N	R - N1
12	P x P	Q x P
13	Q x Q	N x Q
14	N - B3	QR - Q1
15	P - K4	B - B4ch
16	K - B1	N - N5
17	R - N1	R x P
18	R x R	N x R
19	K - K2	N x Bch
20	R x N	R - K1
21	N - Q5	Drawn by

agreement.

There were 2 suitable continuations which Black could have chosen.

(1) 21...B-Q3 threatening 22 BxP and RxB Of course White cannot play 22 NxP because the Kt is lost after 22...R-QB1. Therefore White is forced to play 22 K-B3 which saves both his threatened pawns.

(2) RxBch; K-B3,R-K4; 23 RxB,P-QB3. In this variation White gets his King in a good position.

(As this game was the final no advantage could be gained by either player by winning but a loss by Prince would have made him 2nd equal with Smyth. Ed.)

GAMES FROM OVERSEAS

24th U.S.S.R. CHESS CHAMPIONSHIP
(Moscow January - February 1957)

Here are two games from the above match reprinted from the book reviewed on page 2 of this issue:

R.Nejmetdinov(White) v M.Tal(Black)

FRENCH		DEFENCE	
Black		White	
1 P - K4		P - K3	
2 P - Q4		P - Q4	
3 N - QB3		B - N5	
4 P - K5		P - QB4	
5 B - Q2		N - K2	

The theoretically correct reply. Also playable is 5...N-QB3; e.g. 6N-N5, BxBch; 7 QxB, NxQP; 8 NxN, PxN; 9 N-B3, Q-N3; 10 QxP, QxQ 11 NxQ, B-Q2 with approximate equality.

6 P - QR3	B x N
7 B x B	P - QN3

The usual move here is 7...QN-B3 and after 8 N-B3, PxP there is the choice between - 9 NxP, NxP; 10 NxP, BxN; 11 BxN and 9 BxP, NxB; 10 NxN, in both cases Black is able to equalise. The text move was played in the game Kroguis - Furman, semifinals 24th USSR Championship, which continued 8 Q-N4, N-B4; 9 B-Q3, P-KR4; 10 Q-R3, Q-N4! with equal chances.

8 P - QN4

White wishes to open lines for his two Bishops. If...8 PxQP; 9 BxP, QN-B3; 10 P-QB3 White has a fine position.

8		Q - B2
9 N - B3		N - Q2
10 B - K2		N - QB3
11 O - O		O - O

It would be too dangerous to capture the pawn by 11...PxQP, 12 NxP, QNxKP; (or 12...KNxP, NxN) 13 N-N5, Q-N1; 14 P-B4, N - N3; 15 P - B5 and White has a strong attack.

12 NP x P	P x P
13 P x P	N(B3) x P

Although Black now gets a majority of pawns in the centre he also opens the way for the white bishops, and this is the more important. He should play NxBP and if 14 B-Q3 not 14...NxB; 15 QxN when White gets attacking

chances on the K-side, but 14...N-K5; 15 Q-K1, B-N2; 16 B-N2 with chances for both sides.

14 N x N	N x N
15 Q - Q4	P - B3
16 P - B4	N - B3

If 16...N - Q2, then both 17 P - B5 and 17 B - N4 are very strong.

17 Q - K3	R - Q1
18 QR - Q1	P - K4
19 P x P	P x P

Black has succeeded in establishing his pawn centre, but it is very exposed to the attacks of the white pieces.

20 B - N5	B - N2
-----------	--------

20...P-Q5 is unsatisfactory on account of 21 B-B4ch, K-R1; 22 Q-N5, B-K3; 23 BxB, PxP; 24 B-Q5, P-KR3; 25 Q-K3, QR-B1; 26 BxN, QxB; 27 RxRch, RxR; 28 QxKP with great advantage to White.

21 Q - N3

Avoiding the trap 21 BxN, P-Q5! and Black wins material after both 22 BxP, QxB and 22 RxP, PxR; 23 Q-K6, K-R1; 24 BxB, QxB.



21		R - Q2
22 R - B2		

This move has several points: the second rank is given additional protection and White prepares to double Rooks on the KB file, e.g. 22...P-Q5; 23 B-B4ch, K-R1; 24. (next page)

Nejmetdinov v Tal co QR-KB1 with a winning time White threatens and Black can no longer with check.

22
23 P - R3

Black is almost in z tied to the defence and to move them wou position; e.g. 23... 25 QR-KB1, Q-B1; 26 R 28 B - N2.

24 B - R4
25 K - R1
26 R - B5

Increasing still fur the black pawns.

26

A desperate attempt is easily refuted. satisfactory continu 27 B-N3, K-R1; 28 QR- 30 RxR, R-N1; 31 B-Q2 33 R-B7, R-B1; 34 B-B that any advance of to a breakthrough by

27 Q x Q
28 R(B5)x P
29 R - Q7

Overlooking mate, bu 29...R-K2; 30 RxQR, K-N1, K-K1; 33 K-B1 1 for White.

30 B - N3
31 B x R
32 B x P

GAME 2.: B.Gurgenidze

A great win by t Tal, who at the age the title he first w (Gurgenidze) has ple able to defend his plenty of time as we is triumphantly vind

Gurgenidze
1 P - Q4
2 P - Q5
3 P - Q5
4 N - Q5

Nejmetdinov v Tal continued:

QR-KB1 with a winning attack; at the same time White threatens 23 BxN, QxB; 24 QxKP and Black can no longer capture the B pawn with check.

22 R - K1
23 P - R3 B - R1

Black is almost in zugzwang; his pieces are tied to the defence of the central pawns, and to move them would only worsen the position; e.g. 23...P-Q5; 24 B-B4ch, K-R1; 25 QR-KB1, Q-B1; 26 R-B7, RxR; 27 RxR, R-N1; 28 B - N2.

24 B - R4 B - N2
25 K - R1 B - R1
26 R - B5

Increasing still further the pressure on the black pawns.

26 P - K5

A desperate attempt to counterattack which is easily refuted. However, Black has no satisfactory continuations, e.g. 26...P-Q5; 27 B-N3, K-R1; 28 QR-KB1, Q-Q1; 29 R-B7, RxR; 30 RxR, R-N1; 31 B-Q2, P-K5; 32 B-N5, Q-K1; 33 R-B7, R-B1; 34 B-B6! It is significant that any advance of the pawns always leads to a breakthrough by White.

27 Q x Q R x Q
28 R(B5)x P P - K6
29 R - Q7 P - K7

Overlooking mate, but there is no defence. 29...R-K2; 30 RxQR, RxR; 31 R-Q6, K-B1; 32 K-N1, K-K1; 33 K-B1 leads to a won position for White.

30 B - N3ch R - K3
31 B x Rch K - B1
32 B x Pch Resigns.

GAME 2.: B.Gurgenidze v M.Tal

A great win by the U.S.S.R Champion M. Tal, who at the age of twenty has retained the title he first won last year. White (Gurgenidze) has plenty of pieces available to defend his King and apparently plenty of time as well, but Tal's judgment is triumphantly vindicated.

Gurgenidze Tal
1 P - Q4 N - KB3
2 P - QB4 P - B4
3 P - Q5 P - K3
4 N - QB3 P x P

Gurgenidze Tal

5 P x P P - Q3
6 N - B3 P - KN3
7 P - K4 B - N2
8 B - K2 O - O
9 O - O R - K1
10 N - Q2 N - R3
11 R - K1 N - B2

All very up-to-date. A position has been reached with chances for both sides, and a draw not very likely.

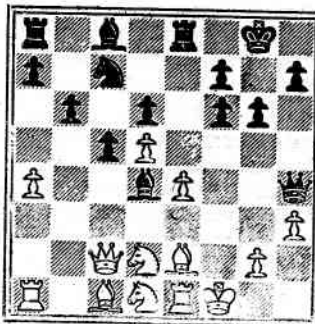
12 P - QR4 P - N3
13 Q - B2 N - N5
14 P - R3

Tal has seen much further into this position. The Kt cannot be driven away, but 14 B x N was quite safe.

14 N x BP!!

A move not too difficult to see, but the follow-up includes a real surprise.

15 K x N Q - R5ch
16 K - B1 B - Q5
17 N - Q1



17 Q x RP!!
18 B - B3

Although Black is a piece down and his pieces do not seem too well placed for attack, it is surprising how quickly an overwhelming concentration against the white King is achieved.

18 Q - R7
19 N - K3 P - B4!

Opening more lines.

20 N(Q2) - B4 P x P
21 B x P B - R3

(Continued on page 13)

"C H E S S A R C H I V E S"

"Chess Archives" edited by Dr Max Euwe is published regularly in "CHESS", and with their permission we give an example of the analytical method employed by the series. The whole field of the game is covered - opening, middle-game and endgame are given systematic treatment, and the series is recommended to players of all grades.

KING'S SIDE ATTACK. M. Taimanov v N. Karaklaic.

SUMMARY

A "stone wall" is a safe formation as a rule but when the players castle on opposite sides as here, the fur can sometimes fly. Black's pawn on his KB4 is a target for White's KNP, allowing the latter to open the KN file when he wishes.

Within twenty moves, the Yugoslav has a lost game; a few trenchant blows, and all is over.

	TAIMANOV	KARAKLAIC
1	P - QB4	N - KB3
2	N - QB3	P - K3
3	N - B3	P - Q4
4	P - Q4	P - B3
5	P - K3	QN - Q2
6	Q - B2	

Stoltz's "Anti-Meran" has been modified by Taimanov into an attacking system against which the ideal defence has yet to be found. The "stone wall" formation Black tries here is clearly unsatisfactory.

6	B - Q3
7	B - Q2

Followed by castling Queen's side, this marks Taimanov's system.

7	O - O
8	O - O - O

8..., Q - K2 may be best.

9	B - K1	P - KB4
---	--------	---------

The point of his previous move, preventing P-K4 for the time being; on the other hand P - KN4 by White now gains considerably in force.

10	P - KR3	N - R3
----	---------	--------

After 10..., N - B3; 11 P - KN4 would be possible at once.

11	B - K2
----	--------

Protecting his KN so that P - KN4 is now a

threat.

11	N - B3
12	N - K5
13	P - B4
14	N x N

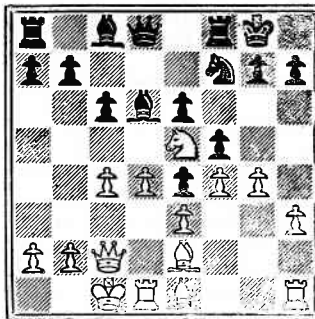
Black's best answer to 14 P-KN4 would have been 14..., K-R1 with a position if not good at least not hopeless.

14	QP x N ?
----	----------

The decisive error; White's attack now goes full speed ahead. 14..., BPxP was the right move, to keep the kings knights file closed

15	P - KN4
----	---------

There is already a direct threat in this: 16 NxN and now (1) 16..., KxN; 17 P-B5, B-B2 18 Q - N3!
(2) 16..., R x N; 17 P - B5, B - B2; 18 P x P, P x P; 19 B - B4 winning the exchange.



15	B - Q2
----	--------

Possibly hoping to be able, after 16 N x N, R x N; 17 P - B5, B - B2; 18 P x P, P x P; 19 B - B4 to obtain some counter-play.

(next page)

TAIMANOV v KARAKLAIC

15..., Q - K2 would be

16 P - B5

After 16..., B-B2; 17 have been virtually B x N anyway.

17 QP x B

18 R - N1

White postpones P x P that Black shall not

18

This counter comes to nothing better, e.g. KR-QB1; 20 R-Q2 follow etc. 18..., QR-Q1 would have been answered by 19

19 B - QB

Threatening 20 NPxP, by R x Pch

19

or 19..., N-R3; 20 P x P, B-B4 with a winning

20 B - B4

Black gets no respite enaw; 21..., KP x P winning a lot of mat

20

20..., N - R3 would be given before; and would not hold out f

21 Q - K2

The winning move, tr est attacking piece

21

The only move worth

22 P x P

23 Q - R5

24 P x N

25 R x P

Or 25..., K-B2; 26 R-N and mate in three.

26 Q x N

27 Q - R5

TAIMANOV v KARAKLAIC continued:

15...Q - K2 would have been better.

16 P - B5 B x N

After 16...B-B2; 17 B-B4, Black would have been virtually forced to play 17... B x N anyway.

17 QP x B Q - K2
18 R - N1

White postpones PxP as long as he can, so that Black shall not have the use of his K3

18 P - QN3

This counter comes too late, but there was nothing better, e.g. 18...P - QN4; 19 B - R5 KR-QB1; 20 R-Q2 followed by B-Q1, R/Q2-KN2, etc. 18...QR-Q1 would also, naturally, have been answered by 19 B - R5

19 B - QB3

Threatening 20 NPxP, KPxP; 21 P-K6 followed by R x Pch

19 P - N3

or 19...N-R3; 20 PxP, NxP; 21 QxP, PxP; 22 B-B4 with a winning advantage.

20 B - B4

Black gets no respite. Now 21 PxP is threatened anew; 21...KPxP; 22 RxB! QxR; 23 P-K6, winning a lot of material.

20 Q x P

20...N - R3 would lead to play like that given before; and 2...BP x P; 21 Q x P, would not hold out for long.

21 Q - K2

The winning move, transferring his strongest attacking piece to the King's wing.

21 P - QN4

The only move worth trying.

22 P x P Q x B
23 Q - R5! N - R1
24 P x NP P x P
25 R x Pch N x R

Or 25...K-B2; 26 R-N7 dbl ch, KxR; 27 R-N1ch and mate in three.

26 Q x Nch K - R1
27 Q - R5ch Resigns.

GURGENIDZE v TAL continued (from page 11)

22 B - B3 R - K4
23 R - R3 QR - K1
24 B - Q2 N x P!

Now every piece on each side is directly involved in the play - but White's exposed King must be the decisive factor.

25 B x Nch R x B
26 K - K2

There is no escape.

26 KB x N
27 R x B B x Nch!
28 Resigns.

CLUB NOTES

GISBORNE C.C.

The Gisborne Chess Club will be holding their eleventh Annual Labour week-end open tournament from Saturday 25th to Monday 27th of October. The first session will be held in the Intermediate School, Roebuck Rd, starting at 9 am. The final session will be held on the Monday morning.

The winner will hold for one year the Llewellyn Meredith Challenge Cup and will also receive a miniature. Book vouchers will be awarded to all other competitors scoring over 50% and also to the highest placed player who has not previously played in any tournament other than those confined to his own club.

If any competitor could bring one or more clocks, an early advice to that effect would be appreciated by the Secretary,

As Hotel accomodation is limited, early advice should be sent stating the type desired, ie Private or Public etc.

Entries close with the Secretary Mr L1 Meredith, 70 W1 Pere Street, Gisborne (Phone 3777) on Thursday 9 October.

To correspondents: Please indicate on your letters if they are for publication or not as several sent in of late have been more of a personal nature than anything else.

To: C.H. Thank you for your donation. (Ed)

SOLUTIONS

No 85: B-- R3. 86: Q - K7. 87: Q - B6.
88: P - N5. 89: N - B1. 90: N - Q8
VARIATIONS No 88: Key N - Q8

- 1)..K x B; 2 N - K7+,K-K4 or N4; 3 N - B7.
2)..P - R5; 2 N - B7+, K x B; 3 N - N7
3)..P - R5; 2 N - B7+, K x P; 3 N - N6
4)..K x P; 2 N - K6, K x P; 3 N - N6
5)..K x P; 2 N - K6; K - K4 or P-R5;R - B5

POSSIBLE 18.

LADDER

Table with 2 columns: Name and Score. Includes Dr N.E.H.Fulton (18), N.A.Palmer (18), A.T.Scott (18), G.Severinsen (18), G.S.Meakin (15), *B.G.Murphy (15), R.S.Abbott* (14), J.J.Marlow (8), C.Huygens (6), Mrs Spens-Black (6), T.C.C.Scott (6), I.Roffey (5), D.G.Brunt* (2)

*= New Solvers: WELCOME.

COMMENT

We appear to be off to a good start in the new tournament with a total of thirteen solvers. Looks as though it is going to be unlucky for some one. Probably the Problem Editor. I am pleased to welcome three new solvers to our ranks and hope that they enjoy the problems during the coming year.

My apologies Mr Roffey for spelling your name incorrectly in the last issue and hope I have struck the correct letter this time, even though you have given me a choice between the letters R.H. & N. Only one solver pointed out the fact that two of the solutions in the last issue have been printed incorrectly, No 82 is shown as N-K6 instead of B-N6 and No 84 as K-B4 instead of B-K4. As it was pointed out, don't we all wish at least once in a game that our King was mobile enough to make a move like K to R6 to B4.

It appears unanimous that this was one of the best sets of problems published for some time which is borne out by the fact that only four obtained the possible, so I

hope those that were not successful kept carbon copies.

N.B. 2ers: only one key move required.
3ers: Key move and all variations.

No 85. A beauty. No less than 7 crashed in this one. R-N8 is defeated by B - R6. N - B3 fails because of P x N

No 86. Only two caught with this one, and a good catch too. Q-Q6 is defeated by Kn - K6.

No 87. Four missed on this one. Three with the same key of Q-N5 which is rather nicely answered by R - N3.

No 88. Considered to be very good and was good enough to stop six. R - K1 or K2 or R-B4 is beautifully defeated by Q-R2 which pins the white Kt and prevents N x P. R-B5 is shot down by the simple move of NxP and White is unable to hold K7 if NxPch or B6 if P x Nch.

No 89. A beautiful problem, very trappy, but it held up only two solvers. Q-KN3 is well held by Q - Q1.

No 90. Two solvers lost a point each for erroneous notation, two solvers did not have a go and two were incorrect. N-K5, P-R5 2 N-B8. Not 2 KxP but 2 KxB and holds every thing. Similarly N-K7, K-Q3. 2 N-B8 not KxP but K-K4 and we are back where we started from. N-N7 is defeated by P-R5. R6 etc.

I hope this lot will prove as entertaining

PROBLEM EDITOR

H. HEWITT

88 Kenmure Road DUNEDIN.

(Closing date 31 October)

LADDER

Table with 2 columns: Name and Score. Includes G. Severinsen (16), B. Menzies* (16), Dr. Filmer (11), B.G. Murphy (11), K.R. Austin (11), D.W. Thompson* (11), A.T. Scott (11), Mrs Spens-Black* (11), C. Huygens (11)

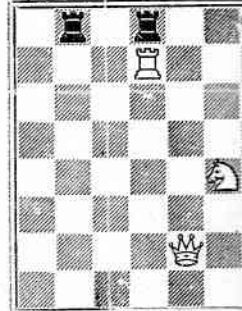
*=New Solvers. WELCOME

1 = 1st lot. 2= 2nd

(Missed from above 1

Dr N.Fulton (6)

4 pts.



White to move and

4.

(Closing date 30 Nov

7 pts



White moves and ma

To: Dr Filmer: We

Mrs S-B: A good st

QUIZ COMPETITION No 2

+++++

	LADDER 1	2
G. Severinsen.	16	19
B. Menzies*	16	17
Dr. Filmer	11	19
B.G. Murphy	11	16
K.R. Austin	11	15
D.W. Thompson*	11	13
A.T. Scott	11	13
Mrs Spens-Black*	3	16
C. Huygens.	3	-

SOLUTIONS

- No 1: QxPch, BxQ; 2 R-B7ch, K-Q3; 3 N-N5ch, K-Q4; 4 P-B4ch, K-K5; 5 QR-K1 mate.
- No 2: B-B8ch, B-R4; 2 QxBch, PxQ; 3 R-R6 mate.
- No 3: N-N3, K-R5; (K-N4; 2 N-K4ch) 2 B-B5ch K moves; 3 N-Q6 P-N3; 4 N-B8, P-N4; 5 N-R7, P-N5; 6 N-B6, P-N6; 7 N-R5, P-N7; 8 N-B4 and wins the pawn.
- No 4: P-R6, P-B6; 2 P-R7, R-R5; 3 R-B4ch or P-R6, R-N5; 2 P-R7, R-N1; 3 R-KN6 or P-R6, RxP; 2 RxPch, K or P moves; R-QR4.
- No 5: R-B7ch; 2 BxR, B-R6ch; 3 K-K1, PxBeh; 4 KxP, Q-N7ch; 5 K-K1, Q-N6 mate. (Several made this mate in six)
- No 6: RxPch, KxR; 2 Q-K7ch, K-N3; 3 R-N8ch, K-B4; 4 RxNch, KxR; 5 Q-N7ch, K-B4; 6 Q-Q7 and wins the Queen.
- No 7: N-B6, NxN; 2 PxN, QxBP; 3 P-Q7, B-B3; 4 RxRch, RxR; 5 PxR(Q)ch, BxQ; 6 Q-B8 mate.
- No 8: RxB; 2 QxR, BxR wins for if QxQ then R-K8 mate

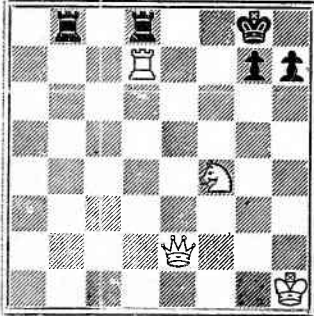
*=New Solvers. WELCOME.

1 = 1st lot. 2= 2nd lot.

(Missed from above ladder)

Dr N. Fulton 6 16 22

4 pts.



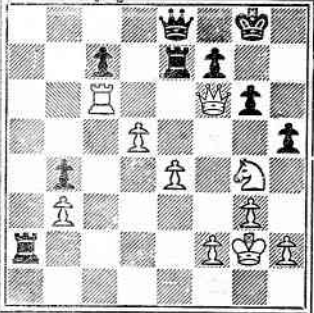
White to move and mate in 4.

(Closing date 30 November)

COMMENT

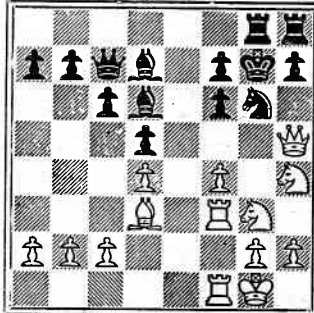
In the first lot most solvers got caught with No 3. Several tried 1 K-N7, K-B4 etc; but went wrong in their own analysis. In the second lot No 7 caused some trouble. It was taken from an actual game, but we failed to notice that Black's moves were not all forced. Though the solution calls for a mate in six, we feel that it is only fair to allow points to those solvers who showed a win in up to six, as it was a rather ambiguous quizz. In future however and in order that there will be no misunderstanding - when a problem calls for a mate in a given number of moves, it must be solved accordingly - in other words if that had been the case with No 7 it would be necessary to also find Black's moves. No 5 caught some as a result of solving the mate in six by playing 5... QxNch overlooking the interposing move of B-B1. Don't forget that the number of points indicates the number of moves requires.

7 pts



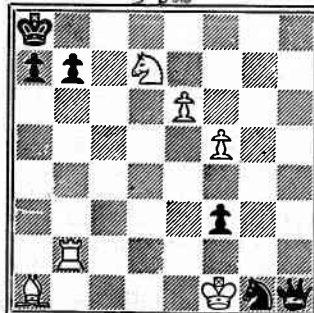
White moves and mates 7

6 pts



White moves and mates 6

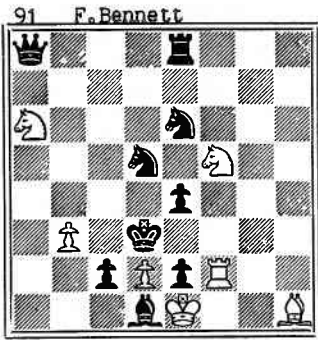
5 pts



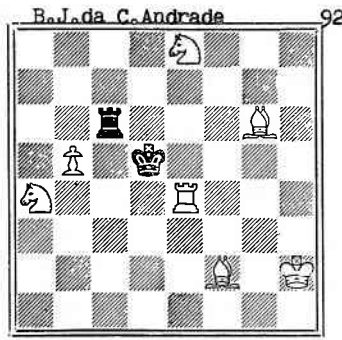
White to move and win 5

To: Dr Filmer: We are rechecking your solution. To: C.H. No solutions this time! To: Mrs S-B: A good start anyway. Pity about the 1st lot. K.R.A. You missed badly in No 6.

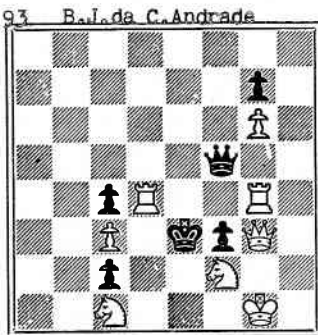
PROBLEMS



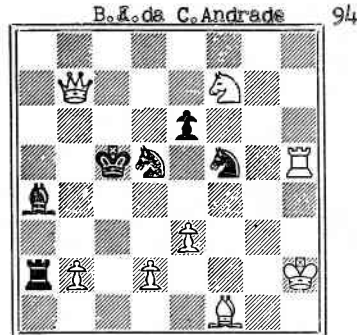
7v9 Mate in two



7v2 Mate in two



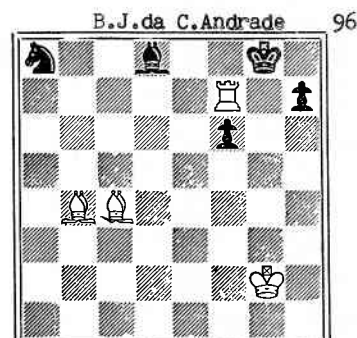
8v6 Mate in two



8v6 Mate in two



8v12 Mate in two



5v4 Mate in three

(Solutions to be in the hands of the Problem Editor no later than 31 October)

ONEHUNGA
Cnr. Manukau &
AUC
Tuesdays, 7

N. V. PARKINSON
Telephon

CANTERBURY
ST. LUKE'S SU
Cnr. Peterborou
Str

Tuesdays and F
— Visitors Alw

President: C
Hon. Secretary: R. S
Hon. Treasurer: F.

NEW ZEALAND
2 Warip
WELLING

We are Agents
CHESS (England), Twic
BRITISH CHESS M
per y

Te A

140 V

WE BUY AND

Lithograph

ONEHUNGA CHESS CLUB
Cnr. Manukau & Mt. Albert Roads
AUCKLAND
Tuesdays, 7.30 to 11 p.m.



N. V. PARKINSON, Hon. Secretary
Telephone 597-221

CANTERBURY CHESS CLUB
ST. LUKE'S SUNDAY SCHOOL
Cnr. Peterborough & Manchester
Streets

Tuesdays and Fridays, 7.30 p.m.
— Visitors Always Welcome —



President: G. G. PARKINS
Hon. Secretary: R. S. ABBOTT, P.O. Box 965.
Hon. Treasurer: F. R. BEST, P.O. Box 1292

NEW ZEALAND CHESSPLAYER
2 Waripori Street
WELLINGTON, S.1

We are Agents for the following:
CHESS (England), Twice Monthly, per year 30/-.
BRITISH CHESS MAGAZINE, Monthly,
per year 28/-

PAPATOETOE CHESS CLUB
LANDSCAPE ROAD - PAPATOETOE
Wednesdays, 7 to 11 p.m.



Secretary: R. V. CLOSEY. Telephone 646S
63 Hillside Road, Papatoetoe.

OBTAIN YOUR CHESS SUPPLIES FROM
NEW ZEALAND CHESSPLAYER



Score Sheets (4½ x 7½ approx.): On good quality
writing paper. 60 moves with large diagram
on back.

100 sheets 3/9—post free
1000 sheets 35/-—post free

Large Diagrams (3 x 3):

100 2/9—post free
1000 25/-—post free

Tournament Cards (New Type 11 Rounds):
100 cards 30/-

PET LOVERS
VISIT

Te Aro Bird & Pet Shop

140 VIVIAN STREET

WELLINGTON

WE BUY AND SELL PUPPIES, BIRDS, FISH AND ALL PET REQUIREMENTS

Proprietor: **J. W. ROSS**

Lithographed by the Cambridge Printing Co. for the Publisher, H. E. Pobar,
2 Waripori Street, Wellington, S.1, N.Z.

SOUTH'S BOOK SHOP LTD.

My Best Games of Chess 1935-1957

By V. V. SYMSLOV

28/3

Smyslov's best games deserve to stand beside those of the other great masters, past and present. This is a collection of his outstanding games from the start of his career to the present day.

Books for the Learner and the Expert

A GUIDE TO CHESS OPENINGS—by Leonard Barden - - - 31/-

An up-to-date account of the latest opening innovations.

1,000 BEST SHORT GAMES OF CHESS—by Irving Chenev - - - 29/-

The best of short games, gathered together in one volume, for your pleasure and enjoyment.

HOW GOOD IS YOUR CHESS?—by Leonard Barden - - - 18/9

A thorough selection of games which have been carefully selected from the latest master tournaments to illustrate various aspects of chess strategy.

SOUTH'S BOOK DEPOT LTD.

8 WILLIS STREET, WELLINGTON

G.P.O. Box 396

Branches at Dunedin, Auckland, Hastings and Lower Hutt

MAIL ORDERS ARE GIVEN PROMPT ATTENTION
