

MAY-JUNE, 1958

Price 2/-

Recd 30th July

The New Zealand Chessplayer

No. 65

NORTH ISLAND CHAMPIONSHIPS

SOUTH ISLAND CHAMPIONSHIPS

WAIKATO LEAGUE CHAMPIONSHIPS

WADE at Bognor Regis

QUIZZ

PROBLEMS

OTAGO CHESS CLUB

DUKE'S BUILDING, CARGILL'S CORNER - DUNEDIN

WEDNESDAY and SATURDAY, 7.30 p.m.

President: I. D. HAYES

Secretary: R. J. LOCKHART. P.O. Box 385. Telephone 77-197 (Bus. Hours.)

VISITORS ARE ALWAYS CORDIALLY WELCOME

DOMINION ROAD CHESS CLUB

225 DOMINION ROAD (Walters Road Corner) - AUCKLAND

TUESDAYS AND FRIDAY, 7 to 11 p.m.



Hon. Secretary: B. C. MENZIES. Telephone 42-716 (Business Hours)

President: T. H. PHILLIPS

AUCKLAND CHESS CLUB [Inc.]

THIRD FLOOR, HIS MAJESTY'S ARCADE, QUEEN STREET - AUCKLAND

President: F. VINCENT.

Secretary: J. BOLLEE.

CLUB NIGHTS . . . MONDAY AND THURSDAY

Telephone 30-360

OPEN AFTERNOONS . . . MONDAY TO FRIDAY

Civic Chess Club

37 DIXON STREET - WELLINGTON

— VISITORS WELCOME —

FRIDAY NIGHTS . . . 7.30 to 11

ALSO TUESDAY NIGHTS—7.30 to 11—at the V.I.C. HOTEL

154 Cuba Street, Wellington



President: T. W. ROSS

Secretary: L. H. COHEN. Telephone 40-033

The

No. 65

Ed

Pro

A C

Who won

The official
title-holder
of a rift se
schools of t

Without wishin
are impelled to poi
facts:

- a) a decisive resu
tournament.
- b) tournament rule
stipulating the
ties.

Two years ago
New Zealand Cham
Feneridis being de
ers. We think this
rules specifically
in the event of a
There were admitte
at the time in arr
it was most unfort
the simple way out
have established a
that looks like be
follow.

The New Zealand Chessplayer

No. 65

MAY - JUNE, 1958

Editor: H. F. POBAR, 2 Waripori Street, Wellington, N.Z.

Sub Editor: S. DARTNALL

Games Editor: J. D. STEELE

Problem Editor: H. HEWITT, 88 Kenmure Road, Dunedin.

Registered at the G.P.O. Wellington, as a Magazine

A C C O R D I N G T O T H E R U L E S

Who won this year's North Island Championship?

The official result gives Phillips and Sarapu as joint title-holders, but we are reliably informed that something of a rift seems to have developed between two opposing schools of thought on the subject.

Without wishing to deepen that rift we are impelled to point out two fairly obvious facts:

- a) a decisive result is desirable in any tournament.
- b) tournament rules provide for this by stipulating the methods for breaking ties.

Two years ago a tie occurred in the New Zealand Championship, Phillips and Feneridis being declared joint title-holders. We think this wrong in principle. The rules specifically provided for a play-off in the event of a tie for first place. There were admittedly special difficulties at the time in arranging the play-off, but it was most unfortunate that in adopting the simple way out the Association should have established an undesirable precedent that looks like becoming all too easy to follow.

In the case of the North Island Championship the circumstances were different only in that the tourney was run on a Swiss system, with the rules clearly providing that where a play-off was not possible, the tie should be broken by use of the Sonneborne - Berger countback.

Now we hold no brief for the Sonneborne Berger. We think it is a bad system, taking no account of who played who in establishing the order of merit. We submit that the system we have been advocating ourselves (see our par on this on page 2) to be much better.

But this is not the point. Whether we like the Sonneborne - Berger or not, the rules state categorically that it is the system to be used. According to that system and therefore according to the rules, Rodney Phillips was unquestionably the winner of the North Island Championship.

(continued page 2)

Editorial continued:

There may be some argument as to the Swiss system and as to the merits or otherwise of its various methods of calculation. There ought to be no argument about the rules. They are clear enough. If we don't like the logical consequences of those rules, the thing to do is to change the rules - not ignore them.

With reference to our comments on the Sonneborne-Berger system of splitting ties mentioned in our editorial and suggesting that our system is somewhat better, we here give it, to those who may be interested. We do not claim it as perfect by any means, but suggest it is better, in that, it does take into account of who played who:-

(1) Check each player's S/B count converting fractions into decimals thus: $27\frac{1}{2} = 27.5$; if the S/B count is a whole number add two noughts thus $27 = 2700$.

(2) Using the first S/B count, count back again adding S/B counts to the players' score in the same way as the first count back. (Byes are not to be counted). Using the North Island Championships for an example: Phillips has $40\frac{1}{2}$ S/B = 4050. Sarapu $39\frac{1}{2} = 3925$. Howe $27 = 2700$. In obtaining a final count add the S/B scores of opponents beaten and half of those drawn to the player's own score. Thus Phillips = 4050 plus beaten opponents' scores = 15392 plus draws $4900 = 202.92$ or 203. Likewise Sarapu 3925 has added $13235 = 17150$ or 171.

A good instance of how it separates a tie, is in the case of Bishop and Austin. Bishop whose score is $3\frac{1}{2}$ is half a point ahead of Austin, yet their S/B count is the same i.e. 11. Using our method Bishop has a final count of 32 and Austin 26.

There are many systems that have been advocated and they all seem to have faults. No doubt ours has also - but it does seem to be better than the straight out Sonneborne - Berger system. We invite criticism.

Ed.

WAS THIS COMPETITION REALLY NECESSARY?

We note with interest, and no little surprise and bewilderment, the appearance of the inaugural issue of "Chess News", "a modest publication", to quote its editor, "launched in the belief that there is scope and demand for a live journal bringing up-to-date news and games to New Zealand chess players".

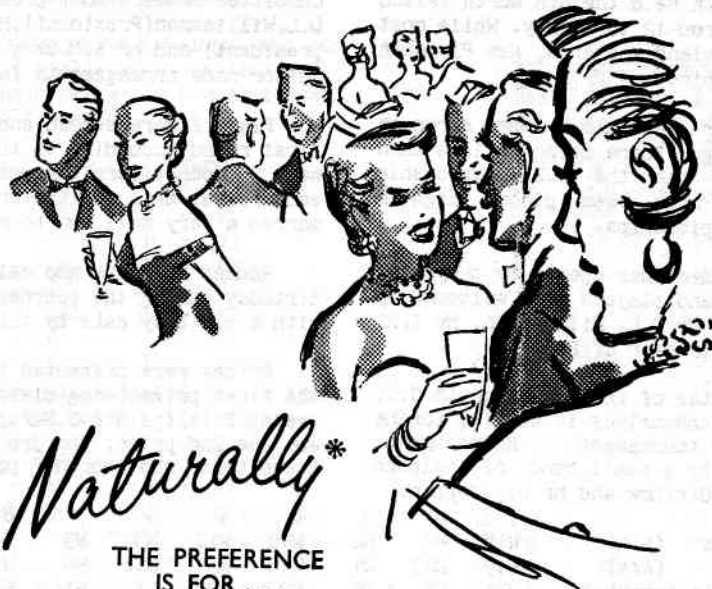
That makes us feel just great. We never kidded ourselves that we were among the literary giants of the chess world. We have been all too conscious of our failings. We never realised however, that we had failed so completely as to warrant such off-hand dismissal of our existence.

We know our shortcomings. We know as well as we know by bitter experience the difficulties - finance, the strictly limited market available for a chess publication in New Zealand, etc. - which largely account for them. In our own way, though, we have tried to meet the need for a magazine which would serve as a direct link between the chess players scattered so widely - and thinly - throughout the country.

Now, it appears, we are to have a competitor in what we imagined to be an already frustratingly small market. Well, it might do us some good, at that. It should certainly put us on our mettle to show that we are still very much alive.

Nevertheless, we welcome "Chess News" as a colleague as much as we deplore it as a competitor. It seems such a pity though. Our parallel existence is likely to mean that normal difficulties which face any chess publication in New Zealand are going to be doubled for both of us. It will almost inevitably mean some duplication of the material in use.

Surely this was a situation which called more for collaboration and consultation than for competition.



*Naturally**

THE PREFERENCE
IS FOR ...

Pilsener Lager

* Skilful *natural* brewing produces the delightful characteristics of Pilsener Lager ... in demand everywhere for its sparkling clarity and flavour.



PHILLIPS WINS NORTH ISLAND CHAMPIONSHIP !

New Plymouth held the 4th North Island Championship from 12 to 17 May. While most of the North Island shivered, New Plymouth basked in sunshine.

For a minor tournament the strength was outstanding, there being no less than three who have won the N.Z. Championship and others who have been placed high in past N.Z. championships.

The tournament was opened by the Mayor Mr A.G. Honour and players were welcomed by the President Dr D.L. Williamson. Mr T.H. Phillips was Director of Play.

The committee of the New Plymouth C.C. did not spare themselves in working for the success of the tournament. Refreshments were supplied by a small band of helpers headed by Mrs G.F. Dow and Mr H.N. Coppin.

Committee members most prominent were Dr D.L. Williamson (President); Mr S. Anchor (vice president) and Mr K.M. Okey Secretary. The Editor made arrangements for publicity.

Players were seeded and played their first round according to the seeding. There were 25 competitors thus causing a bye in each round, this was the only point that marred a very well run tournament.

Rodney Phillips who celebrated his 16th birthday during the tourney, was presented with a birthday cake by the players.

Prizes were presented by the President the first prize being divided equally between R. Phillips and O. Sarapu. Dr W. Reindler won the 2nd prize; the 3rd was divided between those who scored 5 points.

	1	2	3	4	5	6	7	8	Pts	S/B
1 J.R. Phillips (A/k)	W18	W6	D2	W10	W12	W3	W5	D4	7	40½
2 O. Sarapu (A/k)	W19	D23	D1	W15	W5	W18	W6	W10	7	39½
3 W. Reindler (Te Awamutu)	W21	L5	D8	W23	W20	L1	W16	W6	5½	24
4 J. Howe (Lower Hutt)	W22	W10	W5	L12	L6	W7	D13	D1	5	27
5 R.A. Court (N. Plymouth)	W20	W3	L4	W7	L2	W19	L1	W12	5	25½
6 B.H.P. Marsick (Tamarunui)	W24	L1	W16	W11	W4	W12	L2	L3	5	23
7 R.E. Baeyertz (A/k)	W16	W13	L12	L5	W15	L4	W19	W14	5	22
8 D.I. Lynch (Hastings)	L15	W25	D3	W14	W13	L2	D9	W18	5	21½
9 A. Wassilief (Palm North)	L23	L14	D18	W25	W21	W11	D8	W13	5	19½
10 F. Hutchings (ChCh)	W14	L4	W20	L1	D11	W17	W12	L2	4½	20½
11 M. Ponimoni (Wgton)	L13	W21	W25	L6	D10	L9	W24	W19	4½	14½
12 L.E. Whitehouse (Hamilton)	W17	W15	W7	W4	L1	L2	L10	L5	4	20½
13 M. Earle (Dannevirke)	W11	L7	D14	W22	L8	W18	D4	L9	4	18½
14 H.F. Pobar (Wgton)	L10	W9	D13	L8	D24	W23	W15	L7	4	16½
15 R.B. Hosking (N. Plymouth)	W8	L12	W23	L2	L7	W20	L14	Bye	4	12½
16 T.R. Harris (Hawera)	L7	W17	L6	L20	Bye	W22	L3	W23	4	8
17 R. Chapman (N. Plymouth)	L12	L16	L19	Bye	W25	L10	W21	W20	4	6½
18 J.O. Bishop (M/ville)	L1	L20	D9	W24	W23	L13	W22	L8	3½	11
19 K.R. Austin (N. Plymouth)	L2	L24	W17	W21	W22	L5	L7	L11	3	11
20 R.C. Pickering (T. Awamutu)	L5	W18	E10	W16	L3	L15	W25	L17	3	9½
21 W.R. Hamlin (Hawera)	L3	L11	Bye	L19	L9	W25	L17	W24	3	5
22 A.P. Butler (N. Plymouth)	L4	Bye	W24	L13	L19	L16	L18	W25	3	3½
23 S. Mancewicz (Hawera)	W9	D2	L15	L3	L18	L14	Bye	L16	2½	10
24 R.P. Bowler (N. Plymouth)	L6	W19	L22	L18	D14	Bye	L11	L21	2½	6½
25 G.L. Parker (Inglewood)	Bye	L8	L11	L9	L17	L21	L20	L22	1	-

Selected Games
Notes by J.D. Steele

In the seventh runner-up to J.R. Phillips Championship, again in no uncertain fashion

PHILLIPS

- Phillips
- 1 P - K
- 2 N - K
- 3 P - Q
- 4 N - B
- 5 B - Q
- 6 O - O
- 7 Q - K

Phillidor's Defence routine:-solid, but

- 8 P - Q
- 9 P - K

White has rather a ring space than Black exploiting this in Although White's P - straining move, Black fire and hence White feared. Now Black's

- 10 P x P
- 11 N - K
- 12 N - N
- 13 P - B
- 14 P - B

White has cleverly side and has also there. Black is horn

- 14
- 15 N - R
- 16 N - K

The White Knight reful sortie and the pawn storm on the K (See diagram)

- 16
- 17 P - K
- 18 P - K
- 19 Q - N
- 20 P - N
- 21 N - K

Selected Games from the North Island Championship 1958
Notes by J.D.Steele Games Editor.

In the seventh round R.A.Court who was runner-up to J.R.Phillips in the last N.Z. Championship, again meets him and is beaten in no uncertain fashion.

PHILLIDOR'S		DEFENCE	
Phillips		Court	
1	P - K4	P	- K4
2	N - KB3	P	- Q3
3	P - Q4	N	- KB3
4	N - B3	QN	- Q2
5	B - QB4	B	- K2
6	O - O	O	- O
7	Q - K2	P	- QB3

Phillidor's Defence is a useful change from routine:-solid, but rather lifeless.

8	P - QR4	Q	- B2
9	P - KR3	P	- KR3

White has rather more freedom and manoeuvring space than Black. Phillips sets about exploiting this in fine style.

Although White's P - KR3 was a useful restraining move, Black's centre is not under fire and hence White's B-KN5 was not to be feared. Now Black's King side is weakened.

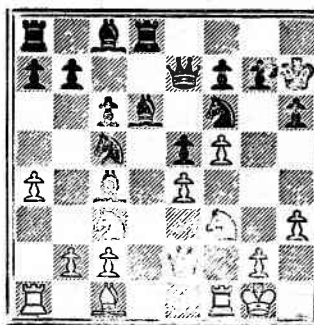
10	P x P	P x P
11	N - KR4 !	N - B4
12	N - N6	R - Q1
13	P - B4	B - Q3
14	P - B5	

White has cleverly gained space on the Ks side and has also a weak point to attack there. Black is horribly cramped.

14	K - R2
15	N - R4	Q - K2
16	N - KB3	

The White Knight returns after its successful sortie and the stage is set for the pawn storm on the King's side.
(See diagram)

16	P - QN3
17	P - KN4	N - N1
18	P - KR4	QN - Q2
19	Q - N2	N - B1
20	P - N5	K - R1
21	N - KR2	P - KR4



(After White's 16th)

22	N - K2	P - N3
23	N - N3	B - B4ch
24	K - R1	R - Q5
25	Q - K2	P - QR4
26	P - N3	P - QN4
27	RP x P	BP x P
28	B - Q5	B - N2
29	P x P !	

The withholding of this move has made it all the more powerful. White now wins at once as 29...., PxP is answered by 30 R - B7

29	R x B
30	Q x Pch	K - N2
31	N - B5	mate.

A game in Phillip's best style.

J.R.PHILLIPS v B.H.P.MARSICK

Another good game from the North Island championship. The score - sheet signed by both players shows Marsick as White and Phillips as Black, but since the table shows Phillips as the winner, we have taken the liberty of transposing the names.

A Ruy Lopez (also by transposition)

	PHILLIPS ?	MARSICK ?
1	P - K4	P - K4
2	N - KB3	N - QB3
3	N - B3	B - K2

PHILLIPS v MARSICK continued:

	PHILLIPS	MARSICK
4	B - N5	P - Q3
5	P - Q4	P x P
6	N x P	B - Q2
7	N x N	P x N
8	B - R4	N - B3
9	O - O	O - O
10	P - KR3	

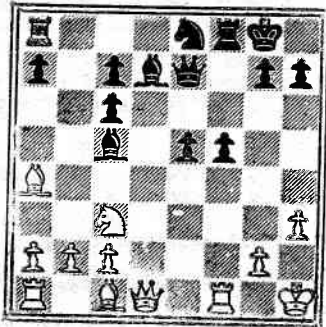
This quiet move emphasises the advantage White has gained from the opening. Black is uncomfortably cramped, and the attack on his QB makes it difficult for him to get his pieces into a better position to break out.

10	N - K1
11	P - B4	P - KB4
12	P - K5	P x P

Trying for a little freedom, even at the cost of a wrecked Queen's side, but, even this way, White's pressure is too strong.

13	P x P	B - B4ch
14	K - R1	Q - K2?

This move meets with an unexpected and drastic reply.



15 B - KN5!

A surprising situation. Black's reply is as good as any because 15...Q-K3; 16 B-N3 or 15...Q-B2; 16 R-K1, P-KR3; (16...B-K3 giving up a pawn at once would only prolong it) 17 P-K6! BxP; 18 RxB: PxB; RxB are clear-cut wins.

15	Q x B
16	Q x B	R - Q1
17	Q x P(B6)	R - Q7

Black puts a bold face on it, but his game

has fallen to pieces.

18	QR - Q1	R x R
19	R x R	B - N3
20	Q - K6ch	K - R1
21	B x N	and White won.

W. REINDLER v R. A. COURT

White opens in unorthodox style, but is met by an equally unusual counter. However the game soon settles in a more beaten track and Black cleverly forces White to weaken his central position to allow a decisive break-through.

(Santasieres Opening)

	REINDLER	COURT
1	N - KB3	N - KB3
2	P - QN4	P - Q4
3	B - N2	P - K3
4	P - QR3	P - QR4
5	P x P	R x P
6	P - K3	B - Q3
7	P - B4	O - O
8	P - Q4	P - B4
9	QN - Q2	P x QP
10	KP x P?	

10 N x P was a better continuation. Having gone to some pains to fianchetto the QB it seems a pity to close its excellent diagonal

10	N - B3
11	B - Q3	Q - K2

Cleverly combining pressure on the QR pawn with the threat of opening the centre.

12 N - N3

The QN has no future on this side of the board. White is however, in a rather unenviable position. It appears that however he plays he will eventually have to play P - B5, with a weak complex of pawns that Black will soon be able to disrupt by P - K4.

12	R - R1
13	P - B5	B - B2
14	O - O	N - R4!

(SEE DIAGRAM PAGE 7)

15 N - K5?

(next page)



(After

Much better is 15 Q...
17 B-KB1 followed by...
bishops on the King...
equal game.

15
16	P - M
17	Q x M

Showing the futility

18	N - E
19	QR - I
20	R - I
21	B - I
22	Q - I

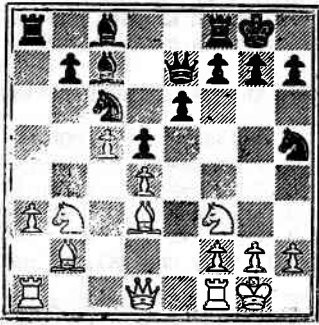
White's position is...
hastens the end. I...
Black's 22...P-K4...
P x P; 24 N - K5

22
23	P x
24	N x
25	B x
26	R x
27	Q x

Winning the exchan

28	P -
29	Q -
30	K x
31	N -
32	Resign

O.SARAPU v B.H.P.MARSICK
Sicilian Defence



(After Black's 14th)

Much better is 15 Q-B2,P-N3; 16 R-K1,N-B5; 17 B-KB1 followed by re-deployment of both bishops on the King's side with about an equal game.

- 15 N - B5
- 16 P - N3 N x B
- 17 Q x N P - B3

Showing the futility of 15 N - K5

- 18 N - B3 Q - B2
- 19 QR - K1 B - Q2
- 20 R - K3 QR - K1
- 21 B - B3 K - R1
- 22 Q - K2 ?

White's position is unenviable, but this hastens the end. If the Queen stays on Q3, Black's 22...,P-K4 can be met by 23 P x P, P x P; 24 N - K5

- 22 P - K4
- 23 P x P P x P
- 24 N x P N x N
- 25 B x N B x B
- 26 R x B R x R
- 27 Q x R B - R6

Winning the exchange and the game.

- 28 P - B4 R - K1
- 29 Q - N2 B x R
- 30 K x B Q - R4
- 31 N - Q4 Q - R6ch
- 32 Resigns.

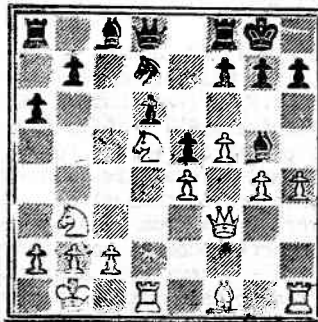
	Sarapu	Marsick
1	P - K4	P - QB4
2	N - KB3	P - Q3
3	P - Q4	P x P
4	N x P	N - KB3
5	N - QB3	P - QR3
6	B - N5	P - K3
7	P - B4	QN - Q2
8	Q - B3	Q - B2
9	O - O - O	B - K2
10	P - B5	P - K4
11	N - N3	O - O ?

Because N - Q5 is not yet a threat, the immediate 11...,P - QN4 is the right move. Although the black QP is weak, Black has prospects of demonstrating a weakness in the white KP, and Black's attacking chances on the Q-side look just about as good as White's on the other wing. The position is very tense and every move must be made to count. There does not appear to be any pressing need to castle yet - White's attack will obviously be directed at the king side.

- 12 P - KN4 N - Q4 ?

A neat exchanging combination, but it only results in White being granted a lovely outpost on d5, when White has a huge advantage.

- 13 N x N B x Bch
- 14 K - N1 Q - Q1
- 15 P - KR4



Sarapu seizes his opportunity with vigour. 15...,BxP is impossible because of 16 Q-R3 winning a piece.

(next page)

SARAPU v MARSICK continued:

15 B - K2
 16 P - N5 P - B3

An even game has been turned into a crushing advantage in five moves. Black's plight is sad indeed.

17 B - B4 K - R1
 18 Q - R5 P - N4

Every white move furthers the attack to the utmost.

19 P - N6 P - R3
 20 N - K3! R - K1

There is no time for 20..., P x B

21 N - N4 B - B1
 22 KR - N1 Q - K2
 23 B - B7 Q - Q1
 24 N x RP

White now crashes through. Sarapu has conducted the attack economically and without loss of time.

24 P x N
 25 P - N7ch! B x P
 26 R x B! K x R
 27 R - N1ch K - B1
 28 B - Q5

An elegant conclusion

28 R - K3
 29 B x KR Q - K1
 30 R - N8ch K - K2
 31 Q x Q mate.

S. AFRICA'S LOSS. N. Zs. GAIN!

A major loss to South Africa and a major gain for Wellington was the recent arrival of J.E. Eriksen. During his sojourn in South Africa (1949 - 1957) he made his mark as a player and worker for the game, in both of which roles his enthusiasm and ability soon proved themselves. He is the only player to have won both the over-the-board and correspondence championships of South Africa - a very good achievement indeed. He was to have played at third board for South Africa in the Team Tournament at Munich.

We include in this issue two of his games which will give some idea of his strength. (Per courtesy of South African Chessplayer)

From Round 6 of the Rhodesian Championship 1956-57 which Eriksen won without a single loss. (Notes by K. Dreyer)

J.E. Eriksen (White) v M. Hope (Black)

	Eriksen	Hope
1	P - K4	N - QB3
2	N - QB3	P - KN3
3	B - B4	B - N2
4	P - Q3	N - R4

Certainly all very unusual, but not so bad.

5	B - N3	N x B
6	RP x N	P - Q3
7	P - B4	P - K4
8	N - B3	N - K2
9	P x P	P x P
10	O - O	O - O
11	B - N5	P - KB3

This will bring Black into difficulties: The KB loses his range so that White can play P-Q4. The KBP cannot advance further, unless the white Kt can go to KN5. But P-KR3 has other disadvantages, as after 12 B - R4 it leaves the threats N-Q5 and B-N3 and (should Black play P-QB3) B-B2. Hence White has the better game.

12	B - R4	P - QB3
13	Q - K2	P - QN3
14	P - KR3	B - N2

Now the black position is quite firm at sight, but the impression is rudely shattered by White's next move. Black had to go P - KN4 and play his Kt in to KB5.

15	P - Q4	P x P
16	Q - B4ch	K - R1
17	N x P	Q - Q3

There is nothing better, as any other move will cost the KB pawn, or more after N - K6

18	QR - Q1	Q - Q4
19	N - B3	

Square K6 can wait and Q7 is meant. Should Black answer Q-B2, then 20 N-QN5 and N-Q6.

19	Q - N1
20	R - Q7	N - N1
21	P - K5	

He increase the pressure with a fine pawn offer which cannot be accepted, as it will lead to the invasion of the 7th rank.

Eriksen v Hope contin

21
 22 KR - Q1
 23 Q - K5

Black is gasping for his Queen's side pawn, freeing himself. White Black must do something P-KN4, then White can RxP; 25 NxP, with a

24 Q x Q
 25 Q - B7
 26 Q x RP
 27 Q x P

Solid and safe, but also very good.

27
 28 Q - B7
 29 Q - R7
 30 Q - B7
 31 Q - Q6

Time trouble.

31
 32 N - N5
 33 QN x P!

This beautiful combination over the board and an adjournment analysis (See Diagram)

33
 The "main line" runs 35 RxB, QxR; 36 N(Q6) 38 R-Q7, RxP; 39 N-Q39...k-R3; 40 P-KN4 still proceeding.
 34 N x R

WE
 WE

Hon. Sec

Eriksen v Hope continued:

21 Q - B1
 22 KR - Q1 B - QR3
 23 Q - K6 Q - K1

Black is gasping for air and gives up all his Queen's side pawns in a vain attempt at freeing himself. White threatens N-K4-Q6 and Black must do something about it. If 23..., P-KN4, then White can have a pawn by 24 PxP RxP; 25 NxP, with a more acute attack.

24 Q x QBP R - Q1
 25 Q - B7 R - B1
 26 Q x RP R - R1
 27 Q x P

Solid and safe, but 27 RxB, RxQ; 28 RxR is also very good.

27 P x P
 28 Q - B7 R - B1
 29 Q - R7 R - R1
 30 Q - B7 R - B1
 31 Q - Q6

Time trouble.

31 P - K5
 32 N - N5 R - KB3
 33 QN x P!!

This beautiful combination which was found over the board and not considered during adjournment analysis, breaks all resistance (See Diagram)

33 P - R3

The "main line" runs 33..., RxQ; 34 NxR, B-Q5 35 RxB, QxR; 36 N(Q6)-B7+ QxN; 37 NxQ+ K-N2 38 R-Q7, RxP; 39 N-Q6+ K-R1; 40 N - K4; or 39..., K-R3; 40 P-KN4 with a mating attack still proceeding.

34 N x R Q - K6ch

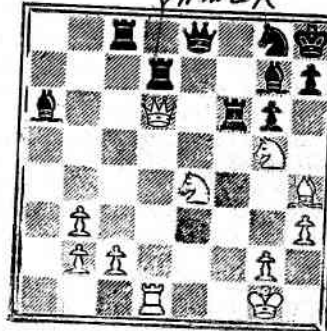
MASTERTON CHESS CLUB

at the
NATIONAL CLUB ROOMS
 Bannister Street, Masterton

Monday Nights - 7.30 p.m.

VISITORS ALWAYS WELCOME

Hon. Secretary : L. Ball. Tel. 2767M.



35 B - B2, Q x N; 36 N x N, R - B1;
 37 R - Q8, B - N2; 38 P - KN4, K x N;
 39 R x Rch, B x R; 40 Q - K6ch and
 mates in a few moves.

WELLINGTON CHESS CLUB

WELLINGTON TAXI BUILDINGS, VIVIAN STREET

TUESDAY and SATURDAY 7.30 p.m.

President : H. J. FULLER.

Hon. Secretary. R. A. GODTSCHALK, 62 Calabar Road, Wellington, E.4.

Telephone 16-552

QUIZZ COMPETITION No 2.

J.E.Eriksen.

Seven entries only so far - though several have indicated that they intended to enter - no doubt forgot !

In order to give these possible late entries a chance and at the same time protecting those who did enter - we propose to send the solutions of the first lot direct to the present entrants and allow the late comers (if there are any) to send in solutions to both sets. We consider this to be the fairest way and one that may encourage sufficient entries to make the competition interesting.

We propose to try out a suggestion made by Dr Fulton that we include only end-games from actual play and not compositions. In future, such end-games will be published as interesting items apart from the Quizz competition.

The method of scoring also will have to have some order in it. In future points will be shown with each problem; an idea suggested by K.R.Austin. Points will be based on the number of moves in the correct solution; thus, if there are five moves, then it will be worth five points - this will also indicate the number of moves required. TO THOSE WHO STILL WISH TO ENTER: Solve the set appearing in No 64 and this set - then send in your solutions together with name and address and 1/- entry fee to the Editor, 2 Waripori Street, Wellington S1.

COMMENT NO 3: beat all except G. Severinsen whose solution was right on the ball. When those who did attempt it receive the solution, they will see that it is the only POSITIVE correct one - any other being subject to too many ifs'.

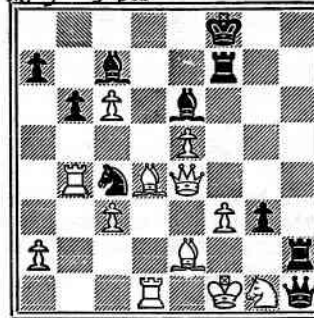
To: C.H. Yes I would be pleased to receive them. Ed.

LADDER	
G. Severinsen	16
B.G. Murphy	11
A.T. Scott	11
K.R. Austin	11
L.J. Kiley	11
Dr. N.E.H. Fulton	6
C. Huygens	3
POSSIBLE	16

3 pts for Nos 1 & 2
5 pts for Nos 3 & 4

CLOSING DATE 30 AUGUST.

No 5 5 pts



Black to move and mate.

The following prize in the 1957 ship. Played against Champion W. Heidenfeldt the champion lost. Eriksen he had to withdraw due to influenza which time. (Notes are by those which appeared

FRENCH

J.E. Eriksen

- 1 P - K4
- 2 P - Q4
- 3 N - QB3
- 4 N x P
- 5 N = KB3
- 6 N x Nch
- 7 B - KN5
- 8 P - B3
- 9 B - Q3
- 10 Q - B2
- 11 P - KR4

A stock combination the Bishop because on his KR2 would be

- 11
- 12 R - R3

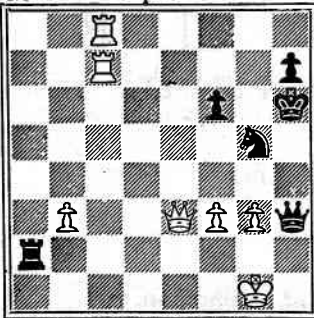
The worst move on a good analytical vague idea that the an escape square. The white attack exposes the Bishop thus stops the deva threatens to stop the squares by P-KB4. obstructs the KN-fil by R-N3. Thus N-N5 multi-purpose moves of good defence.

- 13 N - K5
- 14 B - R7c
- 15 B x RP

While it is perfect no immediate knock- the position after hopeless against strength that Black last trap rather than

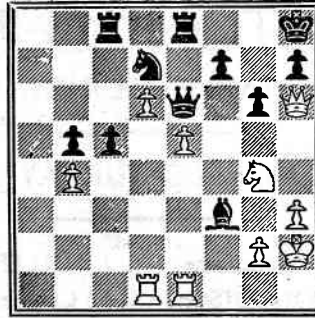
- 16 N x P!

No 6 6 pts



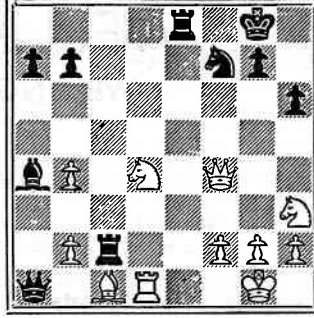
White to move and win

No 7 6 pts



White to move and mate

No 8 2 pts



Black to move and win

J.E.Eriksen. Game 2

The following game won the brilliancy prize in the 1957 South African Championship. Played against the redoubtable S.A. Champion W.Heidenfeld, it was the only game the champion lost. Unfortunately for Eriksen he had to withdraw after four rounds due to influenza which was epidemic at that time.(Notes are by Heidenfeld) based on those which appeared in the Sunday Times.

FRENCH		DEFENCE	
J.E.Eriksen		W.Heidenfeld	
1	P - K4	P - K3	
2	P - Q4	P - Q4	
3	N - QB3	P x P	
4	N x P	N - Q2	
5	N = KB3	N = KB3	
6	N x Nch	N x N	
7	B - KN5	B - K2	
8	P - B3	O - O	
9	B - Q3	P - QN3	
10	Q - B2	P - KR3	
11	P - KR4		

A stock combination: Black cannot capture the Bishop because the subsequent attack on his KR2 would be too strong.

11 B - N2
12 R - R3 R - K1??

The worst move on the board, played for no good analytical reason but merely with the vague idea that the Black King might need an escape square. The correct move to prove the white attack premature was 12 N-N5! It exposes the Bishop to multiple attack and thus stops the devastating N-K5 and it also threatens to stop the attack on the white squares by P-KB4. Finally the Kt itself obstructs the KN-file and thus foils attack by R-N3. Thus N-N5 would be one of those multi-purpose moves that are the essence of good defence.

13 N - K5 N - Q4
14 B - R7ch! K - B1
15 B x RP! P x B

While it is perfectly true that there is no immediate knock-out after 15...B - KB3 the position after 16 B-Q2 would remain so hopeless against a player of Eriksen's strength that Black prefers to try for a last trap rather than prolong the agony.

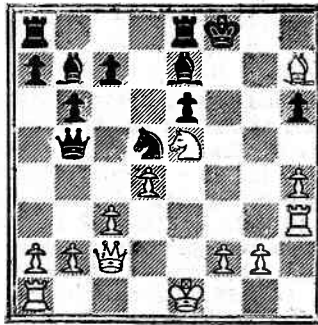
16 N x P!

After R-B3 or Q-Q2 Black would wriggle into safety by B - KB3 followed by K - K2.

16 Q - Q2
17 N - K5 Q - N4

What would YOU play now?-18 Q-N6 wouldn't you - which is the move Black hoped for when playing 15...PxB. How can Black stop the double threat of mate on B7 and N8? By 18...Q - K7ch! 19 K x Q, N - B5ch; 20 King any, N x Q.

Of course, if then 21 B x N, Black would still lose the ending with two pawns to the bad; but it was not impossible that under the impact of the shock White would continue with 21 NxN+?(capturing with a check, and attacking with a second piece), K - N2 22 NxB, KxB - after which the white Knight would be trapped and Black remains a piece up.



But Eriksen calmly looked at the position and then played:

18 P - R4!!

If now the Queen relinquishes the check on K7, Q - N6 is decisive. And if 18...Q-R3; 19 R - B3ch, B - B3; 20 Q - N6, K - K2; 21 Q - B7 and 22 Q - Q7 mate. Therefore Black resigned.

To: A.S. Thanks for results and game. Your annotations quite refreshing. I agree with your comment on the other point also. Will have game in the next issue.

WADE SCORES WELL AT BOGNOR REGIS IN EASTER TOURNAMENT!

R.G.Wade, who has been keeping the New Zealand flag flying in European chess tournaments scored another noteworthy triumph at Bognor Regis, tying for first in a field of 48 with the Yugoslav masters Karalacic and Ikov.

Here is a game against J.Penrose one of Britains' top players, played by Wade recently. (Score and notes by Wade by courtesy of "CHESS")

WADE	PENROSE
1 P - K4	P - K4
2 N - KB3	N - QB3
3 B - N5	P - QR3
4 B - R4	B - B4
5 0 - 0	

I preferred this to an immediate 5 P - B3, as I wished to answer...N - B3 with 6 NxP a line with which I had some experience and which is somewhat better for white.

5	P - QN4
6 B - N3	P - Q3
7 P - B3	B - Q2

I could not find good positive reasons for this move and therefore sought ways of exploiting it. One cannot say that this game refutes it. 7...B - N5 instead would be answered by 8 B - Q5, and if then...Q - Q2 9 BxN,QxB; 10 NxP. 7...B - N2 is possibly playable. The best plan seems to be 7...Q-K2; 8 P-Q4, B-N3; and if PxP? PxP; 10 Q-Q5, B-N2; 11 NxP? with as syicky a game as many another Lopez variation.

8 P - Q4	B - N3
9 P x P	P x P

9...N x P loses a pawn after 10 N x N and 11 Q - Q5.

10 Q - Q5	Q - K2
11 N x P	

Sacrificing a knight for two pawns and an exposed king.

11	Q x N
12 Q x Pch	K - Q1

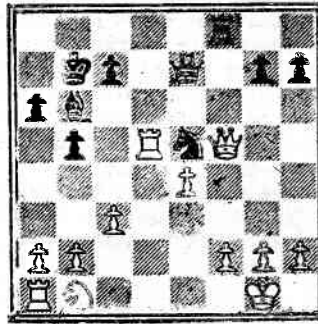
Reaching a second crisis. Can the exposed king be made a target? The direct 12 R-Q1 is answered by...Q-K2 and if 13 Q-Q5,Q-Q3 or 13 B-N5,N-B3; 14 BxN,PxB; 15 Q-Q5,Q-Q3; 15 P-QR4, QxQ; 17 BxQ, K-K2; with no discernible(to me) chink.

13 Q - B8ch B - K1
Better is 13...Q-K1, as 14 QxP,Q-K4 allows a draw. (After the exchange of Queens the extra white pawns are not readily effective

14 B - Q5	Q - B3
15 B - N5	Q x B
16 B x N(B6)	N - K2
17 R - Q1ch	K - B1
18 Q x R	

Not B - Q7ch K - N2; 19 Q x R, B - KR4.

18	N x B
19 Q x Bch	K - N2
20 Q - B7	N - K4
21 Q - B5	Q - K2
22 R - Q5	R - KB1 !



Remarkably resourceful. If 22 RxN, RxQ; 23 RxQ, RxP threatens mate.

23 Q x N	B x Pch
----------	---------

Now not 23...QxQ; 24 RxQ,RxP? 25 R-Q5 with a difference.

24 K - R1	B - Q5
25 Q x B	R - B8ch

WADE v PENROSE cont

26	Q	-	N
27	K	x	R
28	R	-	Q
29	N	-	Q
30	N	-	K
31	P	-	Q

To be rid of the we

31
32	P x P
33	P x P
34	R(Q1)-N
35	K - R
36	R - N
37	R - Q
38	R x P

If 38...K - N1; 39 answer to P - R7, R

MARSI WAIKATO C

The Waikato Chess nament was held at Queen's Birthday we competed in a 6 rou of play was higher The winner was Mr B and a half points w L.E.Whitehouse by h was 3rd followed by

Mr Kyle won the scoring the most p previously won a to prize was awarded 1 of Waikeria who sco

Mr J.Feraga of player of wide exper cator for unfinishe and thirds' play.

Mr N.A.Palmer o Following is the fu 1.B.H.P.Marsick (5 3 Dr W.Reindler (4 Pickering(3); equ Thompson(3); equal 7 G.Lumb and N.A.Palm A.C.Gagen, F.Lawren Bjerring defaulted a

WADE v PENROSE continued:

26 Q - N1 R x Qch
 27 K x R Q x P
 28 R - Q1 Q - B7
 29 N - Q2 Q x NP
 30 N - K4 K - N3
 31 P - QR4

To be rid of the weak pawns.

31 Q - B7
 32 P x P! Q x N
 33 P x P K - R2
 34 R(Q1)- N1 Q - K6ch
 35 K - R1 Q x P
 36 R - N7ch K - R1
 37 R - Q1 Q - KB3
 38 R x P Resigns

If 36...K - N1; 39 P - R7ch. Balck has no answer to P - R7, R - QN1 and R - N8.

 MARSICK WINS

WAIKATO CHAMPIONSHIP

The Waikato Chess League's Annual Tournament was held at Te Awamutu over the Queen's Birthday week-end. Sixteen players competed in a 6 round Swiss. The standard of play was higher than in previous years. The winner was Mr B.H.P. Marsick with five and a half points who beat the titleholder L.E.Whitehouse by half a point. Dr Reindler was 3rd followed by J.Kyle and R.Pickering

Mr Kyle won the prize for the player scoring the most points and not having previously won a tournament, while a special prize was awarded 13-year old Chris Evans of Waikeria who scored two creditable wins

Mr J.Feraga of Te Kauwhata, who is a player of wide experience, acted as adjudicator for unfinished games on the second and thirds' play.

Mr N.A.Palmer of Hamilton was D.O.P. Following is the full result:
 1.B.H.P.Marsick (5½); 2 L.E.Whitehouse (5)
 3 Dr W.Reindler (4½); 4 J.Kyle (4); 5 R.C.Pickering (3½); equal 6th A.T.Scott, and D.Thompson (3); equal 7 J.O.Bishop, F.A.Hirst, G.Lumb and N.A.Palmer (2½); equal 8 D.Young, A.C.Gagen, F.Lawrence and C.Evans (2). Sven Bjerring defaulted after the 4th round and

failed to score.

A feature of the play was the showing of J.Kyle, seeded 10th and finished 4th. Another was the Whitehouse - Marsick draw eventually shown as a win for the latter who, however, had the Championship in safe keeping. The following game is considered by Marsick to be his best game in the tournament.

A.T.Scott (White) v B.H.P. Marsick(Black)

	Scott	Marsick
1	P - Q4	N - KB3
2	P - QB4	P - KN3
3	N - KB3	B - N2
4	P - K3	O - O
5	B - K2	P - Q3
6	O - O	R - K1
7	P - QN3	P - B4
8	B - N2	Q - B2
9	N - B3	P - K3
10	Q - B2	N - B3
11	P - QR3	P - QR3
12	KR - Q1	P - N3
13	P - Q5	P x P
14	N x P	N x N
15	P x N	B x B
16	Q x B	N - K4
17	QR - B1	P - QN4
18	N x N	R x N
19	B - B3	B - B4
20	Q - K2	QR - K1
21	B - N4	B - K5
22	B - B3	Q - N2
23	B x B	R x B
24	R - B3	P - N5
25	P x P	R x NP
26	Q - B2	R - N1
27	R(1)- Q3	P - QR4
28	P - B3	Q - R3
29	R - Q1	P - R5
30	P x P	R - N7
31	Q - Q3	Q x P
32	R - Q2	R - N8ch
33	K - B2	Q - R5ch
34	Resigns.	

VAN DIJK WINS SOUTH ISLAND CHAMPIONSHIP

T.Van Dijk won the South Island Championship with 4½ points as against 3 points scored by his nearest competitor. (P.T.O.)

S. I. Championship continued:

The championship which was run as a 5 round Swiss over the Queen's Birthday weekend clearly demonstrates (in our opinion), that 5 rounds for fourteen players is not enough to really prove a success from the viewpoint of deciding who is the winner. If it had been run under the same conditions, as is the North Island championship, it could well be, that the results may have been different - particularly in the minor placings. The winner of this event however clearly won the title by 1½ points and no doubt would have done the same if it had been an eight rounder.

There were 34 competitors; 14 in the championship and the other 20 split up into two sections. Following is the detailed result:

CHAMPIONSHIP

T. Van Dijk 4½; G. Haase; I. D. Hays; W. A. Poole; R. A. Rasa 3 each; L. Esterman, J. Hunter, F. P. Hutchings A. E. Turner, R. S. Watt 2½ each; G. Saville 2; K. M. Steele 1; M. J. Skerrett 0.

B. Grade Section 1

A. W. Bristow and C. M. Taylor 4; J. Fowler 3½; R. W. Smith 3; Dr N. E. H. Fulton 2½; E. Connor 2; N. Ward 2; Dr R. Gardner and G. Maltby 1½; R. Crowe 1.

B Grade Section 2

B. Anderson and A. McCall 4; Mrs J. Macpherson and O. Hamilton 3½; T. Roffey and H. Sergeant 3 G. Muir 1½; R. Bottomley and R. Wood 1; Mrs J Hurring ½.

The following game is from the tournament played by J. Hunter (White) and G. Haase (Black) in which Hunter tried a sacrificial attack, but Haase defended soundly and soon came out with a won game.

(Notes by Dr R. Gardner)

	Hunter		Haase
1	P - K4		P - K4
2	N - KB3		N - QB3
3	B - B4		N - B3
4	N - N5		

As a general rule it is not good to move a piece twice while the other pieces remain undeveloped, but here there is a direct threat and therefore no waste of time. This is a sharp line of play often leading to a tricky ending.

	Hunter		Haase
4		P - Q4
5	P x P		P - QN4
6	B - B1		N x P
7	B x P		B - N2
8	P - Q4		B - K2
9	N x BP		

This has received the curious name of fegatello (fried liver) attack. In some cases it results in an attack which is often difficult to meet, but here White is not well enough developed to be able to follow the attack up far and Black with better development is soon able to take the initiative.

9		K x N
10	Q - B3ch		B - B3
11	Q - K4		P x P
12	B - QB4		N - K4
13	B - B4		QR - K1
14	B - B4		P - KN4
15	B - QN3		K - N2
16	B - N3		Q - R3
17	K - R1		N - KB5
18	N - R3		
19	Resigns.		

BLEDISLOE CUP MATCHES

The Auckland Chess League scored an overwhelming victory over Waikato League in the first round of the Bledisloe Cup series played at Hamilton on Saturday 12th July. This was Auckland's first entry in the competition since the rules were altered to allow City Leagues to compete and it brought down an exceedingly strong team, the three top players including the present N.Z. Champion (J.R. Phillips) and two former title holders (O. Sarapu and F. Foulds). The individual games are given with Auckland names first.

Sarapu beat Marsick; J.R. Phillips beat Whitehouse; Foulds beat Reindler; Menzies beat Feraga; Sutton DREW Scott; Velekic DREW Hooker; A. Douglas beat Hopkins; Rose beat Kyle; Fletcher beat Pickering; Baeyertz DREW Hirst; Kay beat McIver; Leith beat Boyd; Sale beat Gagen; Rowland beat Carter B. Douglas beat Lumb; Van Dam beat Mrs Milburn; Moss beat Stuart; T.H. Phillips beat Saunders and Hurley LOST to Gifford.

Final Score 17½ to 2½ in favour of Auckland.

Otago Team on page 15.

BLEDISLOE CUP SERIES

The following Otago to play Canterbury match due to be played

R. A. Rasa, T. Van Dijk, W. Petre, G. G. Haase, I. D. Hays, R. S. Watt, I. Glass, H. E. Hewitt, I. H. Penrose, A. C. T. Lentz, J. J. Marlow, B. W. Anderson, L. Wh

AROUND THE

DOMINION ROAD. C.C.

On Saturday 21st sending D.R.C.C. where they were the Club.

They report the ing and enjoyable a filton won the match course was just a the two clubs, and will be possible before long. Their

Their 1st League land losing 2 : 4; a they won 4 : 2. The with Auckland C.C.

Mr E. Moon won the championship of the newcomer to the club every success in the

The club's school just begun.

OFOTIKI C.C. A very held the Edgecombe Club the usual yearly ma little too strong f 4½ : 3½. Details ar names first:- J. Wal T.v. Emkevert drew L beat H. Briggs; O. Wa tin; N. Barclay beat J. Patterson; F. Coll M. Hall lost to C. Gar the rubber by 3 : 2

BLDISLOE CUP SERIES continued:

The following team has been picked for Otago to play Canterbury in the telegraph match due to be played 26 July.

R.A.Rasa, T.Van Dijk, W.A.Poole, J.F.Lang, W.Petre, G.G.Haase, R.W.Lungley, W.G.Stenhouse, R.S.Watt, I.D.Hayes, K.M.Steele, R.J.Glass, H.E.Hewitt, A.McDermott, R.McDermid, I.H.Penrose, A.C.Twose, R.E.Williamson, A.Lentz, J.J.Marlow. Emergencies: R.Gardner, B.W.Anderson, L.Wheeler and R.J. Lockhart.

AROUND THE CLUBS

DOMINION ROAD. C.C.

On Saturday 21 June 12 players representing D.R.C.C. journeyed to Hamilton, where they were the guests of the Hamilton Club.

They report that they had an interesting and enjoyable afternoon of chess. Hamilton won the match 7½ to 4½. The visit of course was just a friendly contest between the two clubs, and D.R.C.C. hope that it will be possible for Hamilton to visit them before long. Their thanks to Hamilton.

Their 1st League team has played Auckland losing 2: 4; and against North Shore, they won 4: 2. Their 2nd team had a draw with Auckland C.C.

Mr E.Moon won the intermediate(c) grade championship of the club. He is a recent newcomer to the club, and they wish him every success in the future.

The club's schoolboy championship has just begun.

OPOTIKI C.C. A very enjoyable evening was held on Saturday 2 July, when the Edgecombe Club came over to Opotiki for the usual yearly match. Edgecombe proved a little too strong for Opotiki, winning by 4½ : 3½. Details are as follows: Edgecombe names first:- J.Walker lost to W.H.Dick; T.v.Emkevert drew L.Collins; C.Armstrong beat H.Briggs; O.Wainwright lost to F.Martin; N.Barclay beat J.Ward; N.Carter beat J.Patterson; F.Collett beat B.Mansell and M.Hall lost to C.Gandy. Edgecombe now lead the rubber by 3: 2.

CENTICS C.C.

The following are the officers of the above club: patron: The Rt Hon W. Nash. President & Club Captain: E.V.Cuff

Vice-presidents: S.P.Duffy
Z.Frankel
S.Kuzmecich

Secretary-Treasurer: D.T.Alley

They have entered two teams A & C in the Wellington League's team competitions. The C team has already won the first match against Hydro 5: 1. Centics A were undefeated last season beating W.M.C.C. and drawing with Wellington and Civic.

SCANDIA CLUB VISIT CIVIC WELLINGTON

Ten players from Palmerston North members of the Scandia C.C. travelled to Wellington to play the Civic C.C. held in the Railway Social Hall on Saturday 12 July.

There were two rounds, one in the afternoon and one at night.

T.Ross President of Civic C.C. welcomed the visitors and at the conclusion of the match F.Weil President of the Scandia Club on behalf of his club thanked their hosts for the pleasant time they had had.

Mr L.Cohen looked after the catering and made a splendid job of it, so much so, that mention was made of it during the address given by Mr Ross. Mr G.Murphy and Miss M.McGrath assisted Mr Cohen.

Scandia won 16:5; Civic never expecting the strength they met, fielded players out of their three grades. Results were as follows:

	CIVIC	SCANDIA
R.O.Callahan	0	W.Bello 1
J.K.L.Webling	½	T.Lepviikman 1½
Dr J.Darwin	1½	A.Wassilief ½
W.Tynan	0	V.Arlidge 1
W.Tynan	0	F.Weil 1
H.F.Pobar	1	B.Watkins 1
P.Goffin	0	F.Weil 1
P.Goffin	1	W.Edwards 0
C.Kozero	0	D.Gordon 2
G.Murphy	0	K.Humphries 2
T.Ross	0	M.Kopytko 2
L.Cohen	1	W.Edwards 0
M.Ponimoni	0	V.Arlidge 1
L.Cohen	0	K.Humphries 1
J.Howe	0	D.Gordon 1
	Civic: 5	Scandia 16

WORLD CHAMPIONSHIP MATCH

It almost seems, from the match just completed, that World championship chess is becoming too much for the players. Anybody who has competed in master tournaments (and this can apply to New Zealand also. Ed) know how terrible can be the nervous tension. Stahlberg once confessed freely that he lost two pounds weight a week when playing in one (and this after a lifetime's experience). The mind rules the body, and there is little doubt that the illnesses, on the part of one or other contestant, which caused FIVE separate hold-ups at various stages, were almost entirely caused by nerves. The illnesses were no doubt quite genuine - presumably there was a medical certificate each time - but nobody can doubt that, had Botvinnik and Smyslov been sun-bathing on the beach instead of locked in mental fight with the whole chess world looking on, they would have kept happy and healthy throughout.

For instance; in the fifteenth round Botvinnik surviving a vicious attack won a pawn. Smyslov had positional compensation which evaporated and when Botvinnik exchanged queens to hand back the pawn and simplify into a dead drawn ending, one felt that in a more desperate situation with a draw not so useful, he might well have gone for the win. In a simple, harmless, drawn position, Botvinnik lost on time!

Everybody is liable to exceed his time in a lost position or in a time-scramble. For a World Champion to do this with an easy game when not particularly short of time is amazing.

Botvinnik claimed indisposition which may have accounted for his strange lapse. (By courtesy of "CHESS")

Congress players (N.Z.) know only too well the strain of playing 11 rounds in sometimes less than ten days, so, can, to some extent sympathise with Botvinnik and Smyslov. In this issue we give two games from the World Championship Match, which, resulted in a win for Botvinnik 12½ : 10½.

ROUND 11: QP Grunfeld Defence.

	SMYSLOV	BOTVINNIK
1	P - Q4	N - KB3
2	P - QB4	P - KN3
3	N - QB3	P - Q4
4	N - B3	B - N2
5	Q - N3	P x P
6	Q x BP	O - O
7	P - K4	B - N5
8	B - K3	KN - Q2
9	R - Q1	N - N3
10	Q - N3	N - B3
11	P - Q5	N - K4
12	B - K2	N x Nch

A very similar position has arisen in three previous encounters between Smyslov and Botvinnik, but always with Smyslov as Black. Perhaps Botvinnik hoped to unsettle Smyslov by playing one of his own favourite lines against him. Smyslov, however, appears to have a better idea than Botvinnik of the difficulties facing Black in this opening.

13	P x N	B - R4
14	P - KR4	

Probably partly to forestall 14... Q-Q2-R6, with pressure on the weakened white King side pawns, but also underlining the basic difficulty of Black's game - his position is uncomfortably restricted and there does not appear to be any logical way to free himself.

14	Q - Q2
15	P - R4	P - R4

Obviously necessary.

16	N - N5	N - B1
17	B - Q4	

Virtually forcing the elimination of Black's only well placed piece, his KB.

17	N - Q3
18	B x B	K x B
19	N - Q4	

While a cursory examination might suggest that Black has overcome his more immediate perils, his next move, which is purely defensive, shows that he fully appreciates the seriousness of the situation. (See diagram next page).



(After White)

19
Forestalling 20 Q-

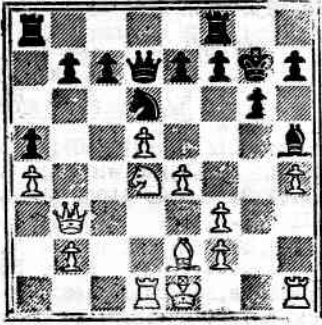
20 R - ...
All White's pieces
and it bodes ill for
game that he can find
a lone queen excursion

21 Q - ...
Ignoring the threat
..., QxRP; 22 P-K5,

22 P x ...
23 Q - ...
With the double threat

23
24 N - ...
Resignation might seem
even such a tenacious
was convinced of this
position.

Botvinnik has offered
as an adjournment
Perhaps his most famous
field was his game
grandmaster Lundin
where, from an adjournment
appeared to be slight
Botvinnik forced a
moves. Here is a
from Game 6 World C
The diagrammed position
41st move.



(After White's 19th move)

19 K - N1
Forestalling 20 Q-B3, K-N1; 21 P-K5 and P-K6

20 R - KN1 Q - R6

All White's pieces are actively employed, and it bodes ill for the future of Black's game that he can find no other counter than a lone queen excursion.

21 Q - K3! (P - QB4)

Ignoring the threat to the KRP, for if 21 ... QxRP; 22 P-K5, N-N1; 23 N-B5.

22 P x P(e.p.) P x P

23 Q - N5!

With the double threat of Q x B and Q x KP

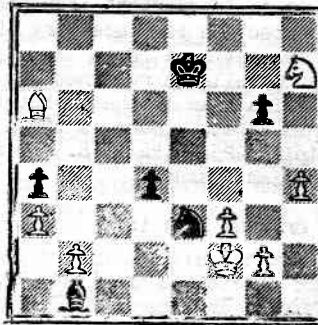
23 P - QB4

24 N - B6 Resigns.

Resignation might seem a little early but even such a tenacious fighter as Botvinnik was convinced of the hopelessness of his position.

Botvinnik has often given evidence that as an adjournment analyst, he is unequalled. Perhaps his most famous achievement in this field was his game against the Swedish grandmaster Lundin at Gronigen in 1946, where, from an adjourned position which appeared to be slightly in Lundin's favour, Botvinnik forced a win in nine crushing moves. Here is another fine performance from Game 6 World Championship Match.

The diagrammed position is after Black's 41st move.



While White has two pawns to the good a long and difficult end-game seems to be in prospect. Botvinnik, however, shows that by giving up one of his pawns a quick win can be forced.

	BOTVINNIK	SMYSLOV
42	B - K2	K - K3
43	N - N5ch	K - Q4
44	N - K4!	B x N
45	P x Bch	K x P

With widely separated pawns, the Bishop is much stronger than the Knight.

46 P - KN4! K - B5

47 P - R5 P x P

48 P x P K - N4

49 P - B3! Resigns

Both Black's remaining pawns will be lost.

WELLINGTON'S BLEDISLOE CUP TEAM

The following team will play Auckland on July 26th:- A. Feneridis, J.E. Ericksen, Z. Frankel, L.D. Steele, A.G. Gyles, E. Young, R.O. Callahan, R.S. Kent, K. Beyer, V. Artemiev, J. Webling, O. Thompson, E.S. Dyer, E. Frost, T. Costello, M. Pommoni, J. Howe, J. Darwin, S. Dartnall, H.J. Fuller.

Emergencies: H. Pobar, J.L. Hardy, Rev. Miller, J.C. Taylor, R. Godtschalk.

THAT END - GAME !

Due to an inadvertent transposition of moves a correction is necessary for the analysis suggesting a draw in the game Frankel v. O'Callahan referred to in our last issue. The draw is there, but the order of moves is vital. Here is the position: 16/2p5/p1p1K3/2P5/1P1k4/P7/8. Diagram on page 10 of last issue.

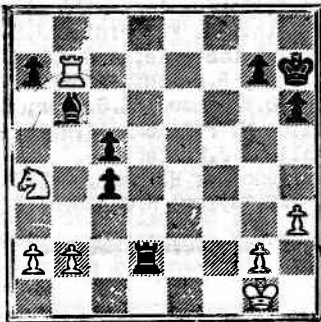
The drawing line is:

45	P - R5	
46	K - Q6	K - B6!	
and now if			
47	K x P(B4)	P x P!	
48	P x P	K x P	
49	K x P	K x P drawing.	
or			
47	K x P(B3)	P - R6	
48	K x P	K - N7	
49	P - N4	K x P	
50	P - N5	K - N7	
51	P - N6	P - R7	
52	P - N7	P - R8(Q)	
53	P - N8(Q)	K - B2	

with a book draw.

ANOTHER END - GAME

We all know that the pawn is the weakest piece on the board and the weakness of doubled pawns is proverbial. Here is a position from actual play where two of these are more than a match for Rook and Knight. Black's third move is an object-lesson to those who always play the obvious move.



This position was reached in a game between Ortueta(White) v Sanz (Black) played in Madrid 1934 with Sanz to move.

	ORTUETA	SANZ
1	R x P!!
2	N X R	P - B6
3	R x B!	

The only move. If 3 N-Q1, P-B7; or 3 N-Q3; P - B5dis ch; 4 RXB, PXN winning. But now after 3..., PXR; 4 N-Q3 stops the pawns and White will win.

3	P - B5!!
---	-------	----------

An amazing move, casually leaving (White) a Rook and Knight ahead. Black now threatens P-B7 which would also win after NxP or N-Q1

4	R - N4	answering all threats
4	P - QR4
5	Resigns.	

Truly an unbelievable position.

ASSOCIATION DOINGS

NOTE:

Affiliates are requested to advise the Association their preference for the Swiss system or Round Robin for the Championship and if a Swiss, if it is to be restricted to 24 players or unrestricted.

Mr. C.P. Belton newly appointed Wellington delegate to the Association was elected Chairman at the last meeting. He is at present in Queensland.

Wellington have accepted the venue for the Schoolboys' National Championships due to start on Monday September 1st and finish on the following Friday.

We regret that Timaru have withdrawn from the Association.

Canterbury's remit re giving the Assn. power to debar players from tournaments for misconduct was carried 9 : 3.

Wellington has submitted a remit on affiliation fees.

P R O B

SOLUT

No 79: N - K3(Cooked
81 Q - N3. 82 N -
84 K - B4

VARIATIONS. N

1...K - N7; 2 R x P
2...K - N7; 2 R x P
3...P - KB8 = R or Q
3 B x B or Q.
4...P - KB8 = Q or
3 B x B or Q
5...P - KB8=Q,R,B or
any other; 3 B
POSSIBLE 20.

- Dr N.E.H. Fulton
- F.A. Hirst
- G.S. Meakin
- A.T. Scott
- N.A. Palmer
- A.R. Crews
- R.F. Montague
- T.C.C. Scott
- C. Huygens
- G. Severinsen
- A.L. Fletcher
- J. Bailey
- H.L. Abbott
- Mrs Spens-Black
- J.J. Marlow
- I. Coffey *
- R.G. Hall
- G.H. Saville

* = New S

No 79: Dr Fulton was the correct key N - Every other solver would appear that the on B7 - but the position sent in by B.J. de C. solvers remarked that and felt that the position that was as far as that gives Dr Fulton the McSherry Memorial Solver of the year. Congratulations to it.

I regret that F. his intention to tra

SOLUTIONS

No 79: N - K3 (Cooked R - KN6). No: 80 Q - R6.
 81 Q - N3. 82 N - K6. 83 K - B8
 84 K - B4

VARIATIONS. No 83: KEY K - B8

- 1...K - N7; 2 R x Pch, K - N6 or KxR; 3 R-N3
- 2...K - N7; 2 R x Pch, K - R8; 3 B - B3
- 3...P - KB8 = R or Q; 2 R - KB2, R or Q x B;
 3 B x B or Q.
- 4...P - KB8 = Q or B; 2 R - KB2, B or Q - K7
 3 B x B or Q
- 5...P - KB8 = Q, R, B or N; 2 R - KB2, Q, R, B, N.
 any other; 3 B - KB3.

POSSIBLE 20.

LADDER

Dr N.E.H.Fulton	86	20	106
F.A.Hirst	86	18	104
G.S.Meakin	84	18	102
A.T.Scott	81	18	99
N.A.Palmer	74	12	86
A.R.Crews	70	--	70
R.F.Montague	61	--	61
T.C.C.Scott	43	10	53
C.Huygens	40	8	48
G.Severinsen	32	16	48
A.L.Fletcher	43	--	43
J.Bailey	32	--	32
H.L.Abbott	22	--	22
Mrs Spens-Black	7	14	21
J.J.Marlow	8	10	18
I.Coffey *		12	12
R.G.Hall	7	--	7
G.H.Saville	4	--	4

* = New Solver. Welcome.

COMMENTS

No 79: Dr Fulton was the only one to submit the correct key N - K3 as well as the cook. Every other solver submitted the cook. It would appear that the R should have been on B7 - but the position shown is the one sent in by B.J.de C.Andrade. No less than 3 solvers remarked that the key was too easy and felt that the problem was cooked, - but that was as far as they went. This problem gives Dr Fulton the sole title to the F.G. McSherry Memorial Shield for the coming year. Congratulations Noel, you have earned it.

I regret that F. Hirst has indicated his intention to transfer his affection to

another magazine and will no longer be a solver to this column. His association with this column will be missed as he has always been at the head of the solvers. Winning the shield outright twice and tying with N.Fulton last year for first place. Thanks for your past support Fred, and good luck for the future.

Commenting on individuals one must not forget the grand man of solvers one J.J. Marlow aged 96 who has just recovered from a bout of pneumonia and immediately sends in the correct solutions to the 2 movers which incidentally he solves off the diagram. It is just as well for you leaders that he does not bother with 3 movers or submits the solutions to every issue of the "Chessplayer"

Well folks, this ends another series of problems and this issue commences the competition for the new year.

Only one problem was cooked during the past year and it strangely enough decided who was to win the competition. This was the only two points dropped by F.Hirst for the entire year. Dr Fulton not missing a point right through. Everyone else missed on the cook. G.S.Meakin missed on one other two mover and A.T.Scott ran into trouble with erroneous notations. Quite a few of those in the lower half could have been higher had they paid more attention to their notations. It is amazing the number who played Black's King in No 83 to N2 and N3. Have a look at that carbon copy I told you to keep and then hang your heads.

In conclusion I wish to thank you one and all for your support during the past year - but remember more solvers would be most welcome. Good solving for the coming year.

PROBLEM EDITOR
 H.HEWITT.

88 Kenmure Road, DUNEDIN.

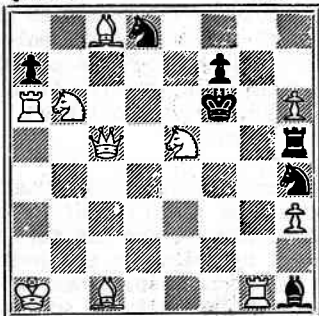
PROBLEMS

Specially composed for N.Z.C.P. 1958

F. Bennett 1st publication

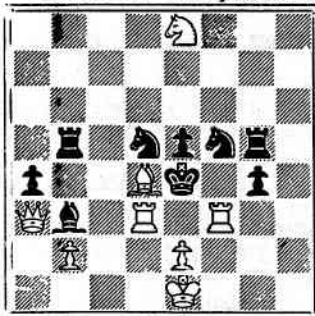
B.J.de C
Andrade.

85



10 v 7 Mate in two

86

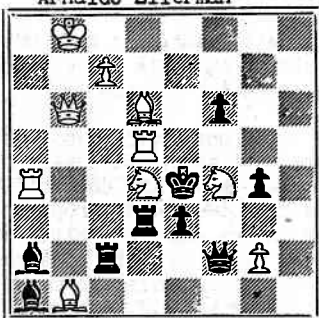


8 v 9 Mate in two

Handelsblad 1917

Arnaldo Ellerman

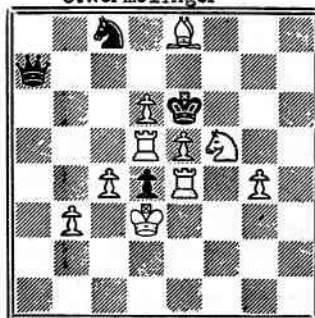
87



10 v 9 Mate in two

C.Wermelinger

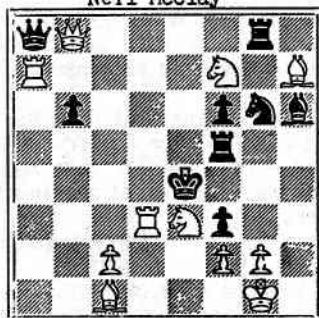
88



10 v 4 Mate in two

Neil McClay

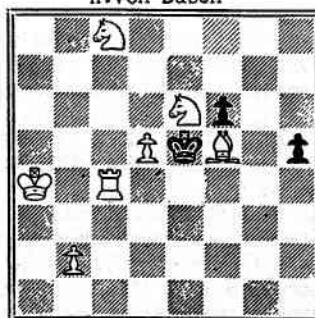
89



11 v 9 Mate in two

H.Von Düben

90



7 v 3 Mate in three

(Solutions to be in the hands of the Problem Editor no later than 30 August)

ONEHUN

Cnr. Manuk

Tuesda

N. V. PARK

Tele

CANTERB

ST. LUKE

Cnr. Peterb

Tuesdays a

— Visitors

Preside

Hon. Secretary :

Hon. Treasurer

NEW ZEAL

2 V

WE!

We are Ag

CHESS (England)

BRITISH CH

Te

14

WE BUY

Litho

ONEHUNGA CHESS CLUB
Cnr. Manukau & Mt. Albert Roads
AUCKLAND
Tuesdays, 7.30 to 11 p.m.

★
N. V. PARKINSON, Hon. Secretary
Telephone 597-221

CANTERBURY CHESS CLUB
ST. LUKE'S SUNDAY SCHOOL
Cnr. Peterborough & Manchester
Streets

Tuesdays and Fridays, 7.30 p.m.
— Visitors Always Welcome —

●
President: G. G. PARKINS
Hon. Secretary: R. S. ABBOTT, P.O. Box 965.
Hon. Treasurer: F. R. BEST, P.O. Box 1292

NEW ZEALAND CHESSPLAYER
2 Waripori Street
WELLINGTON, S.1

We are Agents for the following:
CHESS (England), Twice Monthly, per year 30/-.
BRITISH CHESS MAGAZINE, Monthly,
per year 28/-

PAPATOETOE CHESS CLUB
LANDSCAPE ROAD - PAPATOETOE
Wednesdays, 7 to 11 p.m.

●
Secretary: R. V. CLOSEY. Telephone 6465
63 Hillside Road, Papatoetoe.

OBTAIN YOUR CHESS SUPPLIES FROM
NEW ZEALAND CHESSPLAYER

●
Score Sheets (4½ x 7½ approx.): On good quality
writing paper. 60 moves with large diagram
on back.

100 sheets 3/9—post free
1000 sheets 35/-—post free

Large Diagrams (3 x 3):

100 2/9—post free
1000 25/-—post free

Tournament Cards (New Type 11 Rounds):
100 cards 30/-

PET LOVERS
VISIT

Te Aro Bird & Pet Shop

140 VIVIAN STREET

WELLINGTON

WE BUY AND SELL PUPPIES, BIRDS, FISH AND ALL PET REQUIREMENTS

Proprietor: J. W. ROSS

Lithographed by the Cambridge Printing Co. for the Publisher, H. F. Pobar,
2 Waripori Street, Wellington, S.1, N.Z.

SOUTH'S BOOK SHOP LTD.

My Best Games of Chess

1935-1957

By V. V. SYMSLOV

28/3

Smyslov's best games deserve to stand beside those of the other great masters, past and present. This is a collection of his outstanding games from the start of his career to the present day.

Books for the Learner and the Expert

A GUIDE TO CHESS OPENINGS—by Leonard Barden - - 31/-
An up-to-date account of the latest opening innovations.

1,000 BEST SHORT GAMES OF CHESS—by Irving Chenev - 29/-
The best of short games, gathered together in one volume, for your pleasure and enjoyment.

HOW GOOD IS YOUR CHESS?—by Leonard Barden - - 18/9
A thorough selection of games which have been carefully selected from the latest master tournaments to illustrate various aspects of chess strategy.

SOUTH'S BOOK DEPOT LTD.

8 WILLIS STREET, WELLINGTON

G.P.O. Box 396

Branches at Dunedin, Auckland, Hastings and Lower Hutt

MAIL ORDERS ARE GIVEN PROMPT ATTENTION
