

No. 7
CHESS

*g*azette

6^D

Vol. 1	NOV. 1st, 1938	No. 9
PROBLEM COMPETITION PROVINCIAL NEWS GAMES, Etc.		

Edited and Published
by
FEN. H. GRANT
Address:
124 Somerfield Street,
Christchurch

N.Z. Chess Gazette

Published the 1st
of each month.
Price 6d.
Annual Subscription:
6/6
(including postage)

OFFICIAL MONTHLY ORGAN OF B.C.C.A. (N.Z. UNIT)

Vol. 1

NOVEMBER 1st, 1938

No. 9

Chess in Wellington

CHAMPIONS OF CHAMPIONS.

Mr. A. W. Gyles is leading in this Annual Contest, his tally being 5—0. He meets Mr. E. E. Hicks, the Ngaio Champion) in the final round, when a draw would suffice to give him first place.

CHESS TOURNEY

CHAMPIONSHIP OF WELLINGTON.

By inaugurating an all Wellington championship tourney, the Wellington Chess League added a new and very popular feature to its annual programme. This contest will not interfere with the annual champion-of-champions event that was instituted in 1922. It is being played under a time limit of 20 moves an hour, and other congress conditions, at the rate of two rounds a week.

When the 4th Round was completed the scores were as follows:—

	W	L	D	To Play
A. W. Gyles ..	3	0	0	6
E. H. Severne ..	2	0	2	5
F. K. Kelling ..	3	1	0	5
H. J. Fuller ..	2	1	0	6
E. E. Hicks ..	0	0	3	6
E. J. Dyer ..	1	2	1	5
F. Vincent ..	1	2	1	5
J. Morton ..	1	3	0	5
W. J. Fairburn ..	1	3	0	5
W. White ..	0	2	1	6

At the time of writing two adjourned games are to be played. Fuller has won a Bishop for a Pawn against White. In the other game Gyles is a Pawn up against Hicks who is fighting a stubborn rear guard action in an effort to secure a draw. At a later date we intend to publish full details of this Championship.

OBITUARY NOTICE.

The Wellington Chess Club lost a distinguished and generous Patron when Sir Harold Beauchamp, K.B., passed away in Wellington City on the 5th instant, aged 79 years.

CITY v. REST OF PROVINCE.

An annual fixture between chess players residing in Greater Wellington and a combined "Rest of the Province" team was inaugurated two years ago. The third of these matches was played in Palmerston North on Saturday, September 17th, and was a great success in every way, thanks to the good organising work of the two honorary secretaries, Messrs. R. N. Yorke (Palmerston North) and J. L. Hardy (Wellington).

A very cordial welcome was extended to the visitors by Mr. H. Christensen, who expressed pleasure at seeing such a large gathering. He said he felt sure that the match would stimulate interest in the game, and improve the standard of play in the provincial centres represented.

Palmerston North contributed 11 players, Wanganui 8, Hastings 6, Woodville 5, and Dannevirke 1. Owing to several last-minute disappointments the city captain had to borrow five players to balance the sides. The first round, which was played during the afternoon in the P.D.C. assembly rooms, gave the Province team a useful lead of 5 games (15½ to 10½). They increased their advantage at the evening session, the return round yielding them 16½ wins to their opponents' 8½. This made the gross totals: Rest of Province 32, City 19, as follows: (Wanganui players being indicated W., Palmerston North by P.N., Hastings by H., Woodville by Wo., and Dannevirke by D.):—

R. O. Scott (W) 2, A. W. Gyles 0; J. Heenan (H) 1½, E. J. Dyer ½; R. Christensen (P.N.) ½, E. E. Hicks 1½; N. Cromarty (W) 1½, W. White ½; C. W. Gray (H) ½, F. K. Kelling 1½; A. J. Ratliff (W) 1, H. J. Fuller 1; R. Williams (P.N.) 1, F. Vincent 1; F. Plant (H) 1, J. L. Hardy 1; H. I. Christensen (P.N.) 1½, H. N. Robie ½; S. Smith (W) ½, A. I. Harper (P.N.) 1½; A. Stevenson (H) 1½, Mrs. Goldsmith ½; G. S. McLachlan (Wo) 0, A. H. Gilby 2; O. Brill (P.N.) 0, H. P. Yarrell 1; K. V. James (W) 1, H. P. Yarrell 0; P. Fowler (H) 0, A. S. Goldsmith 2; Dr. Reifer (P.N.) 1, W. J. Emery 0; B. Beach (P.N.) 0, W. J. Emery 1; S. Schaw (Wo) 2, J. I. Goldsmith 0; N. R. Lyth (W) 2, S. Falk 0; W. Creamer (W) 2, E. Gallichan 0; L. A. Christensen (P.N.) 1, Mrs. Vincent 1; A. Summers (D) 2, H. Braines 0; J. B. Harris 2, Emery jnr. 0; J. B. Fleck (P.N.) 2, J. R. Gyles 0; J. Haynes (H) 2, L. Jones (W) 0; K. V. James (W) 1, J. M. Worboys (Wo) 0; O. D. Bell (Wo) 1, J. M. Worboys (Wo) 0; O. D. Bell (Wo) ½, A. Stewart (P.N.) ½; E. Bennett (P.N.) 0, R. N. Yorke (P.N.) 1; E. Bennett (P.N.) 0, Miss. P. Christensen (P.N.) 1.

The strong play of the winning side was a feature of this very enjoyable contest. Mr. E. Gallichan, a member of the city team, was president of the Ashurst Chess Club 50 years ago.

The thanks of the visitors were expressed by Messrs. J. I. Goldsmith (chairman of the Wellington Chess League), A. Stevenson (Hastings), N. R. Lyth (Wanganui), and S. Schaw (Woodville). Tributes were paid to the successful labours of the local executive, and also to Mr. J. L. Hardy, who did the organising work for the city team with characteristic thoroughness.

Of the three matches played to date the City has won one, and Province two. The question of whether this fixture could, for a change, be played in Wellington, is to be looked into.

On the previous Saturday Wanganui defeated Palmerston North in all 11-a-side two-round match by 8 games (15-7).

WELLINGTON CHESS LEAGUE

FINAL RESULTS IN A GRADE COMPETITION.

Play in the Wellington Chess League's A grade team's tourney for 1938-9 has been completed. The play in the last two rounds resulted as shown below:—

Round 5.

Karori 4½, Wellington Blue 1½.

Working Men's Club 3½, Wellington Red 2½.

Ngaio 5, Hutt Valley 1.

Round 6.

Working Men's Club 5, Hutt Valley 1.

Wellington Red 4½, Karori 1½.

Wellington Blue 4½, Ngaio 1½.

The last game in this round was not finished till after midnight and the issue (as between Working Men's Club v. Karori) was in doubt right to the last few minutes.

As Mr. Kelling, who sends us plenty of good copy, says:—A man who wants a closer, or more exciting finish than that would be "hard to please."

The final placings for this year are as follows:—

	Matches		Games	
	W	L	W	L
Work'g Men's Club	4	1	19	11
Karori Club	4	1	18½	11½
Wellington 'Red'	3	2	18½	11½
Ngaio Club	2	3	13	17
Wellington 'Blue'	1	4	11½	18½
Hutt Valley Club	1	4	9½	20½

This year's contest has produced an exceptionally interesting finish. The two leading teams, Working Men's Club and Karori, each won four matches, but the former club takes first place, having won 19 games to Karori's 18½. The Wellington Club's "Red" team (last year's winners) also won 18½ games, so that only half point covered the first three sides. The win of the Wellington Working Men's Club and Literary Institute was not expected, as two members of their last year's team, Messrs. Fuller and Vincent, have this year given the Karori Club valuable assistance. The winners played very steadily, however, and never once had to call on a reserve player. The Karori representatives, who this year made their first bid for A grade honours, thoroughly deserve the congratulations tendered them on their fine show-

ing, which augurs well for a very successful future. The Wellington Chess Club's "Red" team, which looks the most formidable side on paper, missed the services of Messrs A. W. Gyles (who is now assisting Karori), G. P. Anderson (who is taking a year's spell from chess), and J. C. McCrea (who is expected to return next week from a four months' visit to Australia and Singapore). The remaining three teams met with less success, but each made a useful contribution to this 1938 tournament.

Since this competition was inaugurated in 1922 it has been won eight times by the Wellington Chess Club, four times by the Wellington Working Men's Club and Literary Institute, three times by the Ngaio Chess Club, and twice by the Wellington South Chess Club (which is now defunct).

A New Competition

Our readers seem to be eager to solve our new series of competitions so we take pleasure in submitting for their benefit a little problem sent to us by Mr. C. Bearsley, Hon. Sec. of the Raetiki Chess Club.

Place the following White pieces on your board:—White Queen at QR3, White King at QR2, White R at QR1, White Bishop at QN2, White Bishop at QN1 and leave QB1 vacant. All other squares not to be used. (Five Chess Pieces and Six Squares).

Now his Majesty must be worked in to QB1 without at any time moving him on to QN2. (Move the pieces as in a game of Chess).

The Reader who solves this competition in the fewest possible moves will receive a book prize. In the event of a number of solvers being correct the book prize will go to the first correct solution opened on November 16th. Replies to Fen. H. Grant, 124 Somerfield Street, Christchurch.

* * *

Magician (sawing woman in half):
"Now after this lady is severed, her
ain will go to science, and the rest
thrown to the dogs."

Voice (from the bald-headed circle):
"Woof, woof."

A SPECTACULAR FINISH.

A fine finish by the young Yugoslavian Master, I. Konig in the Premier Reserves Tournament at Hastings:—

Q.P. King's Indian Defence.

White:	Black:
Konig	Prins
1. P—Q4	N—KB3
2. P—B4	P—KN3
3. P—KN3	

A move recently introduced as a mild deterrent to the Grunfeld defence 3.... P—Q4.

3.	B—N2
4. B—N2	P—B4

Not good at all. The customary procedure in the King's Indian Defence isO—O followed byP—Q3 andP—K4. If White then replies P—Q5 Black's QB4 remains open for effective occupation by his QN, which it certainly does not after the text.

5. P—Q5	P—Q3
6. P—K4	O—O
7. N—K2	P—K4
8. O—O	N—R4

Only logical if Black follows up with 9....P—B4 which move he avoids, however, for move after move, until it is too late.

9. QN—B3	B—Q2
10. B—K3	N—R3
11. Q—Q2	N—B2
12. P—B4	P x P

Here Black misses the last chance of obtaining adequate terrain byP—B4.

13. N x P	N—B3
14. P—KR3	P—QN4
15. P—K5	P x KP
16. N—Q3	P x P

If....P—N5 then simply 17. N—K2.
17. N x KP!

Better than 17. P—Q6, P x N; 18. P x N, Q x P; 19. B x R, R x B; 20. Q x P, P—K5! followed by 21. Q x Pch.

17.	KN x P
18. B—N5!	Q—K1

The move 18. P—B3, B x Nch or 18. Q—B1, N x N would lose a piece.

19. N x N	Q x N
-----------	-------

If 19....B x N then 20. N x N wins a clear Rook.

20. B—B6!	Q—R4
21. P—KN4	B x P
22. P x B	Q x P
23. Q—R6!!!	Resigns

"Chess" April, 1938.

A PAGE OF FUN

CHESS AND GOLF DO NOT MIX!

A reader sends in the following:—

Your paragraph re "approaching" an acquaintance to become a chess enthusiast won't work unless he's "green," as all non-players say it takes a "slice" off their life to "putt" in any time at the game; besides they would feel "caddy" toward their wives if it were a "fairway" to go to the "club" and the wife were "underpar"—"plus four" or five other reasons!

* * * *

A prominent chess player has had to cancel his entry in a championship because he caught a cold. Apparently he has never cared much for draughts.

* * * *

THE LATEST CHESS BOOKS.

(On Sale c/o. A. T. Scott, Napier).

"The Knight's Tour," by G. G. Only.

"Mates in Three," by I. C. Howe.

"The Czech Problem," by A. Dolph.

"Chess in Everyhome, by D. Vorce.

"Scattered Men," by M. T. Board.

"Queen Side Majority," by "Over There."

"King versus Queen," by Willie Wynne.

"My Best 100 Losses," by Maida Slip.

"The King's Corner, by H. E. Castles.

* * *

A chess player went to the seaside one day, and took along a pocket chess set. After setting up the pieces he commenced to play over the various openings. A small boy walked up and seemed very interested in the spectacle of a strong able-bodied man moving the little pieces of wood about the board.

Suddenly the small boy said, "I know how old you are. You are forty." The player asked, "Why do you think that?" the boy answered, "because my brother is twenty, and he is half barmy."

B.C.C.A. PLAYERS "MEET."

When two B.C.C.A. players are drawn against one another for the first time, an introduction takes place by letter. One player in the South Island writes to his opponent in the North Island and the following arrives by return mail.

Dear Tom,

My name is Charlie and I'm fifty eight, I must be born too soon, or you too late, We are not matched as far as ages go, But still at Chess we both may make a show.

"The games the thing;" I hear you say
"That's right,"

Tho you may win, you sure will get a fight."

Regarding Photos, coming up the lift.
Mine came that way one day and sadly missed,

The lift it caught a glance of my old "phiz"

And fainted in the middle of its "biz."
Result—It found the bottom of the well,

Photo and lift were both consigned to h-l.

Now No. 15 still is going strong
And take my tip some day when your along,
I'll shout; "Oh! generous Soul indeed
A costless shout! Take heed! Take heed!

Charlie.....

* * *

A Napier player was playing Koshnitsky in a simultaneous display.

"X" moved P—Q4 and Koshnitsky took it en passant. "X" argued the point and Koshnitsky explained "en passant" and told "X" to move next time round. He did an played P—Q3!!! Koshnitsky took it again! Consternation of Napier player.

* * *

A Knight by the name of Sir Scott At King's gambit had swotted a lot But when playing friend Kosh He said "Oh by gosh I'm afraid that my King's on the spot!"

Wanganui Notes

The Wanganui Chess Club's Championship is now in a very interesting position. The leaders at present are:—

	P	W	L	D	Play	Pts.
R. O. Scott	21	17	0	4	1	19
N. Cromarty	15	12	1	2	7	13
L. Pleasants	20	14	5	1	2	14½

The final position will create great interest this year owing to the 1938-39 Congress being held in Wanganui. Mr. Cromarty is playing fine chess and there is every likelihood of him defeating Mr. Scott, the present champion.

It is expected that three very fine players in Messrs. Scott, Cromarty and Rutherford playing in the Congress.

SOLVERS GET THEIR POINTS.

	Sept.	Oct.	Pts.
F. K. Kelling	.. 3	3	6
R. E. Fenton	.. 3	3	6
H. Lees	.. 3	3	6
N. S. Traves	.. 3	3	6
N. Cromarty	.. 3	3	6
W. J. Fairburn	.. 3	3	6
A. E. Le Petit	.. 3	2	5
J. B. Cumming	.. 2	3	5
A. T. Scott	.. 2	3	5
J. B. Breidecker	.. 2	2	4
J. Lang	.. 3	—	3
A. J. Park	.. 1	2	3
R. B. Schulze	.. 2	1	3
G. H. Brown	.. —	3	3
Miss. F. Collinson	1	1	2
D. Robertson	.. 1	0	1
J. A. Jackson	.. 1	—	1
J. N. Boyd	.. 1	—	1
T. Moor	.. 0	—	0
L. A. Jones	.. 0	—	0

Note to Solvers:—"—" means that solver did not enter his solutions.

SUBSCRIBE!

We need your co-operation to make this magazine a success.

The annual subscription of 6/6 will bring the "N.Z. CHESS GAZETTE" to your home every month.

Post subscriptions to F. H. Grant,
124 SOMERFIELD STREET,
SPREYDON, CHRISTCHURCH.

News from Auckland

Results in the Auckland Chess Championship to date are as follows:—

	To	W	L	D	Play	Total
D. I. Jones	.. 7	2	3	0		8½
C. J. Taylor	.. 8	3	0	1		8
C. B. Newick	6	2	3	1		7½
C. G. Lennard	6	3	2	1		7
A. B. Dallow	.. 4	3	3	2		5½
H. B. Wingfield	5	6	1	0		5½
L. J. Kiley	.. 4	3	2	3		5
N. E. Barclay	4	3	2	3		5
J. R. McIntosh	4	4	1	2		4½
F. G. Stables	.. 3	4	2	3		4
A. L. Fletcher	2	7	3	0		3½
Mrs E. Short	.. 2	8	2	0		3
Dr. G. Short	.. 2	8	2	0		3

The Handicap Tourney now rests between C. B. Newick and J. Adkins (2nd Class).

Later report of Auckland Chess Championship:—First Place to Mr. C. J. Taylor. Full scores will appear shortly.

The match between Auckland and Hamilton Clubs was played on September 24th, and resulted in a win for Auckland by 11½ to 7½.

Correspondence Chess

B.C.C.A. RESULTS

TROPHIES TOURNEY.

Championship.—E. S. Rutherford ½, R. O. Scott ¼.

HANDICAP TOURNEY.

Robertson (4B) 1, E. Jackson (4B) 0.
Gray (4A) 2, Jessett (4A) 0.
Gray (4A) 1, Schulze (3) 0.
J. A. Jackson (3) 1, Gray (4A) 0.
J. A. Jackson (3) 1, Chaney (4B) 0.
Miss. Collinson (4A) 1, Peterson (3) 0.

Mathieson (4A) 1, Miss Collinson (4A) 0.

Haigh (2) 1, Dr. Burton (2) 0.
J. Lang (1A) 1, Haigh (2) 0.

PROMOTIONS.—

J. W. Gray, Class 4A to Class 3.

SOLUTIONS TO OCTOBER PROBLEMS.

No. 4. 1. Q—B6.
No. 5. 1. B—B7.
No. 6. 1. Q—KN7, K x P; 2. Q—Q4ch
1....., K—B3; 2. P—B5
1....., K—N3; 2. N—N5
1....., K—Q3; 2. N—N5ch

REVENGE!

Played in the Premier Reserves at Margate, Easter, 1938.

Queen's Pawn.

White:	Black:
Prins	Konig
1. P—Q4	P—K3
2. B—B4	N—KB3
3. P—K3	P—B4
4. N—KB3	N—B3

4. ... P—Q4 is better, meeting 5. N—B3 (?) by P—QR3.

5. N—B3

Strong, threatening the cramping move, P—Q5, besides N—QN5.

5.	P x P
6. N x P	B—N5
7. N—N5	P—K4
8. B—N5	O—O
9. P—QR3	B—K2

To relieve an awkward pin, but I prefer B x Nch, followed by P—Q4, even if the QP has to be given up.

10. B x N	B x B
11. B—B4	

Very good. N—Q6 can wait.

11.	P—KN3
12. N—Q6	B—N2
13. P—KR4!	Q—K2
14. P—R5	P—K5
15. P x P	P x P
16. QN x P	B x P
17. Q—N4!	Q—K4

If B x R, 18. Q x NPch, and then comes mate.

18. N x BP	Q—QR4ch
19. K—K2	K—N2
20. N (B7)—N5	R—B4
21. R—R7ch	K—B1
22. Q—R4	B x R
23. Q—R6ch	K—K1
24. Q x Pch	K—Q1
25. N—K6ch	P x N
26. Q—N8ch	Resigns

"Chess" August, 1938.

CHATS TO OUR PROBLEM SOLVERS.

J.B. Cumming.—Delighted to hear from you again and also to hear that you enjoyed our selections.

A. T. Scott.—Yes you are right this time! Wonders will never cease! You state that Nos. 4, 5 and 6 were easy. (See par to Mr. Brown).

G. H. Brown.—Always pleased to see another entry. As we have noticed your solutions (always right) to the A.C.R. we are tickled to note that our No. 5 a two mover stumped such strong solvers as you and Mr. Le Petit.

A. E. Le Petit.—Whoopee! A composer goes wrong! No. 5. 1. B—N8 and B—N3 as played by you and Mr Brown fails owing to Black playing R—R2! Would you explain what a mirror mate is? Those awful words, duals, etc., are above us. (No we are not worried about admitting it).

Miss. Collinson.—So you'll be pleased to know the solution to No. 6! We didn't expect to puzzle you with a three mover. One of the leaders informs us it took him a good half hour. We think he's a leg puller!

J. B. Breidecker.—Re No. 5. Guess you've noticed par to Mr. Le Petit. Address noted. Glad to know you are enjoying our Problems.

D. Roberston.—You are right and wrong also! Sounds Irish! As you are wrong in the Keys in all problems. You are right that they must be harder than last month! Yes the K x Q in diagramed position was in the magazine you mentioned.

R. B. Schulze.—No. 5 B—N3? R—R2! No. 6 Q—N6? K x P! If only you had shoved the Queen up the board a wee bit harder!

A. J. Park.—No. 6 puzzled a few. Next month I hope to see your "can do."

To all the leaders:—We promised to puzzle you all this month. Well we imagine this month's fare are a bit harder. Don't forget if we do happen to get wrong key moves from any of you we will shove you into the "wrongdoers" items!

Napier Notes

Mr. G. H. Brown, Hon. Sec. of the Napier Chess Club, is now well on the road to recovery after his severe illness. He attended the Club quite recently and was congratulated on all sides by his Club mates. We send our congrats to Mr. Brown and hope he continues to remain in good health.

The Napier Chess Club played a team from Hastings last month and won handsomely by 12½—5½. Couch beat Lynch 1½—½, Scott beat Plant 1½—½, Aislabie beat Gray (score not known).

Editors Note:—Napierites! See Page of Fun limerick about Scott composed by Brown! We are now definitely sure that Mr. Brown is a better composer than Mr. Schulze!

LIMERICK COMPETITION.

The winning last line to our last month's unfinished Limerick was sent in by Mr. G. H. Brown, Napier.

The "famous" Limerick reads as follows:—

"There is a young chessist named Schulze,
His spare time a teacher in schools,
At Pen's Probs he did strain,
But they busted his brain,
" ? ? ? ? fools (?)

Mr. Brown's last line is:—

"An improvement," kids say, the young fulze."

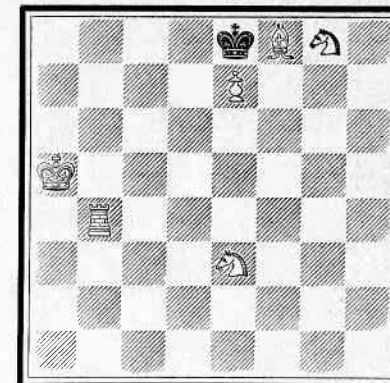
We had a large number of lines sent in and found it very difficult to decide which in our opinion was the best. We congratulate the winner.

PROBLEM SOLVING COMPETITION

Last month we promised our solvers that in this issue we would print three three-movers; well here they are and let us hope all our solvers enjoy finding the proverbial keys.

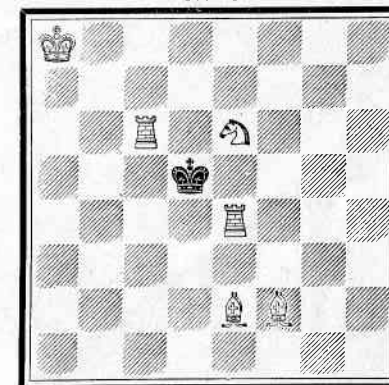
Solutions must be posted to reach the Editor, 124 Somerfield Street, Christchurch, not later than November 15th. Key moves only are required.

No. 7



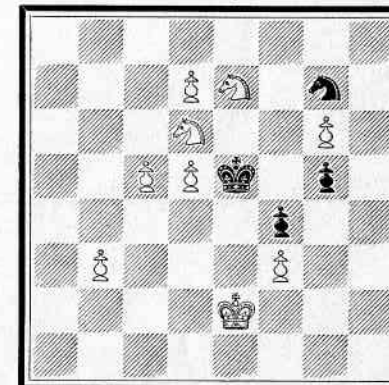
Mate in Three (6 v. 1)

No. 8



Mate in Three (6 v. 1)

No. 9



Mate in Three (9 v. 4)

Show This to Your Friends

N.Z. Chess Gazette

124 Somerfield Street,
Spreydon,
Christchurch.

To the Editor,
N.Z. Chess Gazette.

Dear Sir,

Please send me immediately after each publication 12 issues (one copy each month) of the "N.Z. CHESS GAZETTE" to my address as mentioned below.

Please find enclosed Postal Note for the sum of 6/6 for one year's subscription.

Signature <sup>(MR.
MRS.
MISS)</sup>

[BLOCK LETTERS]

Address

No. of Copies

N.B.—The Annual Subscription of 6/6 includes postage.