

22 APR 1964

The
NEW ZEALAND
CHESS
MAGAZINE



ORTVIN SARAPU PLAYING CHOO MIN WANG IN DJAKARTA LAST YEAR

CONTENTS

	<u>Page</u>
The Marshall Attack	51
Frankel - Sutton	55
Sutton - Haase	55
Sutton - Baeyertz	56
New Zealand Chess Association. Minutes of Annual Meeting	57
New Zealand Chess Association Bulletin	59
Correspondence Chess	60
Local News:	
Ashburton South Island Championship	63
Dunedin	64
Wellington	64
Hutt Valley	65
Christchurch	66
Problem Section	67

VOL. 2 NUMBER 3, MARCH 1964.

REGISTERED AS A MAGAZINE AT THE G.P.O. WELLINGTON.

THE NEW ZEALAND CHESS MAGAZINE, Vol. 2, No. 3. March 1964.

Published monthly. Registered as a magazine at the G.P.O.
Wellington, New Zealand.

Managing Editor: Zygmunt Frankel, 123, Brougham Street, Flat 2,
Wellington.

Auckland Representative: Richard Sutton, 255 St. Helier's Bay Road,
Auckland.

Christchurch Representative: G.M. Cleary, 48 Hereford Street,
Christchurch.

Local News Editor: Roger Chapman, c/o Lands and Deeds Registry,
Justice Department, Wellington.

Subscription Rates: N.Z. and U.K. £1.10.0d per annum. Australia,
£1.17.9d (Aust) per annum. U.S.A. and Canada,
3 dollars 60 cents (U.S.) per annum.

CHESS WORLD

333 George Street, Sydney, N.S.W. Famous
International Magazine.

Edited by **C.J.S. PURDY**, First World Correspondence
Chess Champion, International Master of F.I.D.E.,
Grandmaster of I.C.C.F., Former Champion of Australia,
New Zealand, etc.

As a writer in the technique of Chess for over 30
years, C.J.S. Purdy has contributed substantially to
the rise of Chess in the areas in which his magazine
circulates.

"CHESS WORLD" offers a complete service to all
Chess players. Chessmen and Boards, Clocks, and the
largest stock of chess books in the Southern Hemisphere.
New Zealand clients have no difficulty in making
remittances: they pay "CHESS WORLD" accounts to the
New Zealand Agent:

A.L. FLETCHER,
39 DENNY AVENUE,
MOUNT ROSKILL,
AUCKLAND.

Mr. Fletcher will forward orders to Sydney, if
desired. Cheques should be made in favour of "CHESS
WORLD". Payment on invoice.

THE SUBSCRIPTION IS £1 (N.Z.) PER ANNUM.

CANTERBURY CHESS CLUB (INC.)

President:
A.S. HOLLANDER. Private Phone: 33-469

Hon. Secretary:
R.S. ABBOTT, Private
Phone: 47-564

Hon. Treasurer:
G.V. SUMNER

Vice-Presidents:
G.M. CLEARY, A.J. NYMAN

MEETS EVERY TUESDAY AND SATURDAY 7.30 P.M. AT
227 BEALEY AVENUE, CHRISTCHURCH. PHONE: 78-281.

VISITORS WELCOME

50

THE MAIN VA

Our analy
"Shakhmati" (C
his latest bo

The Ruy I
Neustadt quote
Lopez "Spanish
"Spanish Game.

The quest
avoided? Shd
the openings?
1...PK4 retur

about half a c
We will m

1. PK4, PK4: 2

6. RK1, PQN4:

11. RxN, PQB3:

BKN5: 16. QO3,
1963 in N.Z.C.

interesting an

All atten

12. PQ4, BQ3,
not been succe

as the main on

Black her

16...PKB4 and
account of 17.

by QB1 remaini

Now 16...
does not work

Match, USSR-Cz

18. QB1, QR4:

BxB: 23. PxB,

27. NN3, RxNP:

his material a

18. QB1,

Black King, th

it, but now th

weak.

20...PxB

Champion

in an article

Bulletin, No.

In the gar

USSR-Czechoslov

purpose of the

destroy the im

not obliged to

THE MAIN VARIATION IN THE MARSHALL ATTACK IN THE RUY LOPEZ

LATEST ANALYSIS

Compiled by the Editor

Our analysis is based on an article by Master Neustadt in "Shakhmati" (Chess in the USSR) and a Leonard Barden's analysis in his latest book "The Ruy Lopez."

The Ruy Lopez is one of the most powerful weapons for White. Neustadt quotes Tartakower who called Black's troubles in the Ruy Lopez "Spanish Torture" (The Ruy Lopez is sometimes called the "Spanish Game.") Indeed Black has no easy task in most variations.

The question therefore arises can this slow "torture" be avoided? Shouldn't one try to capture the initiative already in the openings? And so all those who like to answer 1. PK4 with 1...PK4 return to the complicated variations in the attack invented about half a century ago by the great American player Marshall.

We will mainly consider the following modern variations.

1. PK4, PK4: 2. NKB3, NQB3: 3. EN5, PQR3: 4. BR4, NB3: 5. O-O, BK2: 6. RK1, PQN4: 7. BN3, O-O: 8. PB3, PQ4: 9. PXP, NXP: 10. NXP, NKN: 11. RXN, PQB3: 12. PQ4, BQ3: 13. RK1, QR5: 14. PN3, QR6: 15. BK3, BKN5: 16. QQ3, (For 15. BxN see game John Purdy- Sarapu, Djakarta, 1963 in N.Z.C.M. August-September-October 1963; and the highly interesting analysis by G.J.S. Purdy in "Chess World" August 1963.)

All attempts to prove that, in the old continuation 11...NB3: 12. PQ4, BQ3, Black's initiative is worth the sacrificed pawn have not been successful and so the above variation is justly considered as the main one.

Black here has two principal continuations at his disposal; 16...PKB4 and 16...QRK1. The move 16...PN4? is not good on account of 17. BXP, PKB4; 18. BKR4! and White will exchange Queens by QB1 remaining two pawns up (Barden).

1. The Continuation 16...PKB4

Now 16...PKB4: 17. PKB4, QRK1 Neustadt says that 17...PQN4 does not work and quotes a game Neustadt-Antosh (Correspondence Match, USSR-Czechoslovakia, 1960-61). The following occurred: 18. QB1, QR4: 19. NQ2, KR1: 20. BxN, PxB: 21. PXP, PB5: 22. BXP, BxB: 23. PxB, BR6: 24. QK2, QxQ: 25. RxQ, RXP: 26. NB1, RN5ch: 27. NN3, RXNP: 28. QRK1. White repelled the attack and realised his material advantage.

18. QB1, QR4: 19. NQ2, KR1: 20. BxN. After the retreat of the Black King, the Knight is not pinned and White is obliged to capture it, but now the White squares on the King-side and centre become weak.

20...PxB: 21. QN2. In the game with Tal in the USSR

Championship 1962, Boleslavsky continued 21. PQR4. Again in an article "On the Results of the XV Olympics" ("Shakhmati" Bulletin, No. 1, 1963) he said that White should not play 21. QN2.

In the game Neustadt-Mikvle played in the Correspondence Match USSR-Czechoslovakia, 1961-62, Black continued 21...RK5. The purpose of the sacrifice is to "block" the diagonal QR1-KR8 and destroy the important defender of the K-side. White however is not obliged to capture the Rook at once.

22. PQR4. This is also not new. In the Correspondence Championship White succeeded in repelling the attack and winning after 22...PKM4: 23. PxKQP, PB5: 24. NxP, PxN: 25. PxP, RxP: 26. BxR, BxB: 27. RKB1, BB6: 28. RxB, PxR: 29. QB2, BR6: 30. QxB, QN5ch: 31. KB2, QN7ch: 32. KK1, QR8ch: 33. KQ2, QxR: 34. QxP,

After this it was thought that 22. PQR4 gives White an advantage. However, in the article already mentioned, Boleslavsky has shown that Black could obtain an irresistible attack playing instead of 23...PB5, 23...BR6: and after 24. QB3. 24...RN5!

When grandmaster Boleslavsky wrote about the merits of 24...RN5, this move had already been made by the Czech master Mikle in the game with Neustadt, and, after several moves, Black's position was not won but hopelessly lost. How did that occur?

22...PKM4: 23. PxKQP, BR6: 24. QB3, RN5: It looks as if White can do nothing against the threat 25...PB5, but the defensive - or rather counter attacking-resources are ample.

25. PxP! Leaving his K-side to "fate" White concentrates on the QRP.

25...PB5. If 25...PxP: then 26. RR6.

26. BxP, R(1)xB: Interesting would be 26...BxB to which Master Neustadt intended to reply 27. PxP! The following variations are possible. (a) 27...QxP: 28. PR7, RR1: 29. RK8ch, RxR: 30. PR8=Queen, RxQ: 31. RxRch, KN2: 32. KR7ch, and Black cannot avoid perpetual check as any other attempts lead to his disadvantage. Master Neustadt gives detailed variations which we do not repeat, but leave to the imagination of our readers. (b) 27...BQ3: 28. QxRch, BxQ: 29. PR7, QxP: and before queening White should defend his KN3 by 30. NB1 e.g. 30...BxN: 31. RxB, RxPch: 32. KR1, and White should win. If in the latter variation White plays 28. PR7 a draw results after 28...RxQ: 29. NxR, RxPch: 30. PxR, QxN: 31. PR8=Queen ch, BB1: 32. RR2, QxPch: 33. KR1, QB6ch: 34. KR2, QxRch: and the White King cannot escape checks, the only square where he would feel safe i.e. QR3 is attacked.

27. QxP, QN3: 28. PxP!, RxNP: 29. PR7! White's counterplay is based upon the consistent march of the QRP.

29...RxPch. All Black's pieces are aiming at the White King but there is no decisive continuation of the attack, and meanwhile White's pawn has only one move left to queen, after which Black will have to deal with two White Queens.

30. KR1! A quiet King move "staring into the eyes" of all enemy pieces.

30...RN4 (if 30...BxPch: then 31. QxB, RxQ: 32. PR8=Queen ch, and 33. QxR.) 31. PR8=Queen ch, RB1: 32. RQN1!, BKN5: (If 32...RxQ(5): 33. RxQ ends the struggle as Black cannot recapture the Queen on QR1 because of mate). 33. RxB, RxR: 34. QK5ch and Black resigned.

"The question is, was Black really helpless against the 'courageous' QRP?" asks Master Neustadt. He replies that before throwing himself into the attack by 25...PB5, Black should divert the enemy QRP from its path by 25...PQR4. In this case Black preserves the threat PB5 and the passed QNP is not so dangerous because its queening square is guarded by the Bishop.

Barden's analysis of line 16...PKM4 So far is mainly Neustadt's analysis. Barden is his "Ruy Lopez", apparently not acquainted as yet with Neustadt's article (his book was apparently printed before this article) considers the following variations.

(Up to now White
(Barden says th
RK5: 22. PQR4!
for Black) 19.
(an exchange wh
played KR1) P
as in Barden-R
20...PxP:
PxB: 24. QxP,
21...RR1:
24...RK3: 25.
25...BxN: 26.
QxRP: 30. PQ5:
25. QK2!
two pawns up as

This is an
RK3 with KR1 a
the Rook can be
17. NQ2, R
Krogius (30th U
good because of
with White's ad
20. PKB4,
of the 30th USS
Mikenas in the
Neustadt-Dintee
1962-63) and co
According
21. PxP, BxP: 2
24. QB1, PxP: p
quotes Boleslav
to his opponent
22...RxB, Black
Now 23. Rx
25. RN3, QR3: W
but loses the Q
Another wa
22...RKN3. "H
says Neustadt.
he continued th
and also in thi
taking advantag
22. QB1,
RxR: 24. QxQ, B
an extra piece
23. PxP, P
this brave pawn
25...BxQ:
28. RQN6, RxP:
resigned as he
if 28...QB2: 29
two pawns for th

(Up to now White's 18th as in Neustadt's main line) 18. NQ2, PN4!
(Barden says that 18...,KR1: 19. BxN, PxB: 20. QB1, QR4: 21. QN2, RK5: 22. PQR4!, as in Matanovic-Padevsky, Leipzig, 1960, is too slow for Black) 19. QB1, QR4: 20. QN2! This is clearer than 20. BxNch, (an exchange which White should normally delay until Black has played KR1) PxB: 21. QN2, RK5: 22. PXP, KR1: with counter-chances as in Barden-Ridameya, Varna, 1962.

20...,PXP: 21. BxNch. Not 21. BxP, BxB: 22. PxB, KR1: 23. BxN, PxB: 24. QXP, BK7: as in Dely-Pogats, Hungarian Championship 1961.

21...,KR1: 22. BxKBP, BxB: 23. BxP, BK6ch: 24. KR1, BR6: If 24...,RK3: 25. BB3: (Fisher's move) leaves White a solid pawn up 25...,BxN: 26. BxB, RxBch: 27. RxB, PxB: 28. QxB, QQ4ch: 29. KN1, QxRP: 30. PQ5:

25. QK2! After 25...,BN5: 26. BxR!, RxB: 27. QxB! White is two pawns up as analysed by Boleslavsky.

The Continuation 16...,QRK1

This is another way of continuing the attack. Black want to play RK3 with KRK1 and PKB4 to follow. Depending on the circumstances the Rook can be transferred to the K-wing.

17. NQ2, RK3: 18. BxN, PxB: 19. PQR4, PKB4: The game Tal-Krogus (30th USSR Championship) has shown that 19...,PQN5 is no good because of 20. QB1, QR4: 21. PQB4, PXP: 22. QXP, PN4: 23. PQ5 with White's advantage.

20. PKB4. This move recommended in the tournament bulletins of the 30th USSR Championship by Boleslavsky and Suetin and by Mikenas in the "Chess Bulletin" No. 3, 1963, occurred in the game Neustadt-Dinteen (International Correspondence Masters Tournament 1962-63) and could have led to sad consequences.

According to Boleslavsky's and Suetin's analysis after 20...,KRK1: 21. PXP, BXP: 22. PxB, Black continuing 22...,RxB: 23. RxB, RxB: 24. QB1, PXP: preserves equal chances. (Barden in his book also quotes Boleslavsky's analysis). Neustadt says that when he sent to his opponent 20. PKB4 he noticed "with horror" that instead of 22...,RxB, Black could play 22...,RKN3.

Now 23. RxB is forced and after 23. BK7 dis ch: 24. RxB, BxB: 25. RN3, QR3: White has for the Queen a Rook, Knight and two pawns, but loses the QNP after which his chances of resistance are slight.

Another way of continuing the attack is 22...,RK3 instead of 22...,RKN3. "My opponent missed this interesting opportunity," says Neustadt. "After 20...,KRK1: 21. PXP, instead of 21...,BXP he continued the attack in accordance with the usual scheme 21...,PN4 and also in this game White succeeded in capturing the initiative taking advantage of the advanced QRP."

22. QB1, QR4: On 22...,RxB Neustadt intended to play 23. RxB, RxB: 24. QxQ, BxQ: 25. PXP, and in spite of the fact that Black has an extra piece there is no salvation for him.

23. PXP, PXP: 24. BxP, BK7: 25. PR7! "As in the previous game this brave pawn decides the game," (Neustadt). After:-

25...,BxQ: 26. RxB, RR1: 27. RxB, BR6, (If 27...,BQ6: then 28. RQ6, RXP: 29. RNSch! leads to victory). 28. RKR6 and Black resigned as he must give up the Bishop, e.g. 28...,QN5: 29. RR4 and if 28...,QB2: 29. RxB, RXP: White has a Rook, two minor pieces and two pawns for the Queen.

Barden's Analysis of the
Continuation 16...QRK1

Barden gives the moves of the main variation considered by Neustadt up to Black's 17th move, i.e. 16...QRK1: 17. NQ2, RK3! and says that the position has been analysed in the Soviet Union without a clear conclusion being reached. As pointed out, he could not have been familiar with Neustadt's analysis.

Now Barden's main moves are 18. PR4, PKB4: 19. QB1, QR4: He now quotes the Soviet Master Henkin who considers that in this lively position the chances are about level, his main line being as follows:- 20. PKB4, KRK1: 21. PxP, RxB: 22. RxR, RxR: 23. PXP, BN1: 24. PR7, BxP: 25. RxB, QK1! and apparently Black's attack compensates the two pawns sacrificed. This has not yet been tested over the board.

Barden is familiar with the above mentioned Boleslavsky analysis after 18. BxN.

He also analyses 18. QB1 and concludes that this is inferior to PQR4.

Concluding Remarks

Barden in his "Ruy Lopez" gives also an extensive analysis of 8. PQR4, the "Anti-Marshall" and recommends it for players not familiar with the complicated lines in this attack. It is certainly a wise course to avoid complicated variations if one is not familiar with them.

However the famous Capablanca-Marshall game, when this attack was for the first time played, comes to mind. It will be remembered that Capablanca saw the dangers in accepting Marshall's "Greek gift", but nevertheless did not avoid it considering that a different course would not be very courageous. We like this point of view.

One could of course argue with very good reason that the average players cannot compare themselves to Capablanca. Certainly we can not! One must, however, also remember that our opponents - in New Zealand in particular - are not "Marshalls" and so there is no reason why we should not face the music and willingly accept the sacrificed pawn. The above variations are good examples of situations favourable for White. More of them can be found in Barden's book and we would say even more can be found by the average player himself if he cares to do a bit of home analysis.

In New Zealand there are several players who like to play the Marshall as Black. We have already mentioned that Ortvín Sarapu played it in Indonesia. Richard Sutton has scored many successes with it.

Of lesser lights, Bruce Marsick used to adopt it with success several years ago and the present writer does not mind playing it as Black, as well as playing against it as White. (z.f)

Sutton-Buyertz continuation from page 56.

36. PN3, BR3: 37. QR7ch, BN2: 38. QQ3, BR3: 39. NB4!, QxPch: (For if 39...RXP: 40. NK5ch! and wins; or 39...RR4: 40. QK4, threatening 41. QK6ch) 40. QxQ, RxQ: 41. NxP, BQ6: (There are no real chances of attack here for Black) 42. NB4, BR3: 43. PR5, PB4? (Succumbs to a real endgame combination. But if 43...RQ1: 44. NK5ch, and 45. NxP; otherwise 44. PR6 etc) 44. RXPch!, KK3: (If 44...RxR: 45. NQ6ch, KB3: 44. NxR, KxN: 45. PR6 and Queens) 45. RxR, KxR: 46. KB2, KB3: 47. KK2, KN4: (Better 47...BN4. /So as to answer 48. KQ3 with 48...BQ1 and 49. BB27 but 48. NK5ch and 49. NxP would still win) 48. KQ3, BN4: 49. KK4, BQ1: 50. KB5, BxP: 51. NxR, KxN: 52. KxP, KN4: 53. KB5, PB5: 54. PN4, KB4: 55. KK4, Resigns. (The NP must queen. /56. KB3, KK67 A game full of vigour)

Round 2. BIRD' Sutton). 1. P its obvious int K5; (b) to inau delay ...PQ4 a and to fianchet (This logical exchange of Bla QP will sooner the weak K3 squ 5. PK3, PQB4! himself to ...P same time prepar White not preven as 8. NK5 could BB4: and Black' the doubled pawn same strong repl the QN into play BB4: and 10...E ition begin to s have played 10. tained the advan 10...ER3: 11. E forces it, becau 12. PKN4, BK3: 1 probably impossi BPxB: 16. NR3, 17. QxR, BxP: 18 only helps Black 21. KN2, QB7ch: could have defen the same. The g strategy.)

Round 3. SCOTCH Sutton). 1. PK 5. NxN, NPxN: 6. ommended answer shown that even NN3: 8. BQ3, PQ4 position) 9. Pk undouble his pa just as weak und ment, thus givin Much better was fianchettoing th much time, and w was not appetisi 11. QB3 and 12. 11. QB2, PKN3: 1 with the choice his third rank, however, have im forced as 15... PXP: (Fascinati

NEW ZEALAND CHAMPIONSHIP GAME

Round 2. BIRD'S OPENING. Z. Frankel - R.J. Sutton. (Notes by R.J. Sutton). 1. PKB4, (An unusual speciality of Frankel's. Since its obvious intentions are (a) to establish the King's Knight on K5; (b) to inaugurate a King-side attack, Black's best plan is to delay ...PQ4 as long as possible /so as to play ...PQ3, QNK5/ and to fianchetto his KB) 1...NKB3: 2. NKB3, PKN3: 3. PQN3!?: (This logical move supports the square K5 and aims at an eventual exchange of Black's powerful KB. But since a move of the White QP will sooner or later be necessary, the Bishop is needed to protect the weak K3 square, as the sequel shows.) 3...BN2: 4. BN2, O-O: 5. PK3, PQB4! (Consistent strategy, as he does not wish to commit himself to ...PQ4 until faced by the threat of PK4; yet at the same time prepares the eventual central advance...PQ4-5 should White not prevent it) 6. BK2, NQB3: 7. O-O, PQ4: (Now timely, as 8. NK5 could be answered by 8...PQ5!, e.g. 9. NxN, PxN: 10. BB4, BB4: and Black's better development and central wedge are worth the doubled pawns. Since 8. PQ3 or 8. NB3 would be met by the same strong reply, he has to resort to the next move to try to get the QN into play) 8. PQ4, NK5: 9. NK5, (No better was 9. QNQ2, BB4: and 10...RB1, when the various weak points in White's position begin to show.) 9...NxN: 10. BPxN?, (Undoubtedly he should have played 10. QPxN and it is not clear how Black would have maintained the advantage. The text leaves too many weaknesses.) 10...ER3: 11. BB1, BB4: (Tempts White's next move - or rather forces it, because of the veiled threats against the BP after RB1) 12. PKN4, BK3: 13. KR1, (Better was 13. BB3, but the position was probably impossible to save) 13...RB1: 14. BB3, PB4!: 15. BxN, BPxB: 16. NR3, (He cannot save both the KNP and QBP) 16...RxBch: 17. QxR, BxP: 18. PB4, (Desperation - The opening of the position only helps Black) 18...QR4!: 19. PxQP, RB1: 20. QB4, QK8ch: 21. KN2, QB7ch: 22. Resigns. (After his weak 10th move, White could have defended differently, but the result should have been the same. The game is a convincing justification of Black's strategy.)

Round 3. SCOTCH GAME. R.J. Sutton - G.G. Haase. (Notes by R.J. Sutton). 1. PK4, PK4: 2. NKB3, NQB3: 3. PQ4, PxP: 4. NxP, NB3: 5. NxN, NPxN: 6. PK5, (An interesting system. The generally recommended answer is 6...QK2: 7. QK2, NQ4: but recent analysis has shown that even here White obtains good chances) 6...NQ4: 7. PQB4, NB3: 8. BQ3, PQ4: (He must not allow White to consolidate the position) 9. Pxp ep!, Pxp?: (Succumbing to the temptation to 'undouble his pawns', Black does not see that (a) the pawns are just as weak undoubled and (b) that he will fall behind in development, thus giving White the opportunity to exploit the weakness. Much better was 9...BxP:) 10. O-O, BK3: (This involves a plan of fianchettoing the KB /against the threat of QB2/ but consumes too much time, and weakens his Black squares. The alternative 10...BK2 was not appetising, however, on account of 10. QR5, e.g. 10...PN3: 11. QB3 and 12. BR6, or 10...PKR3: 11. RK1, O-O: 12. BxP! etc) 11. QB2, PKN3: 12. NQ2, BN2: 13. NK4, O-O: 14. BN5, PB3: (Faced with the choice of conceding his KB3 square and further weakening his third rank, he decided on the latter. 14...QB2 would not, however, have improved matters much) 15. BB4, PQ4: (Obviously forced as 15...NB1 would have been positionally hopeless) 16. PxF!, PxF: (Fascinating were the complications after 16...NxP: 17. BK6,

PKB4: 18. BxR, PxN: 19. BxB! e.g. 19...,PxB: 20. QxRP maintaining the exchange up) 17. NB5, BB2: 18. QRB1? (So far White's plan, of fixing on to the temporary weaknesses of the K-side, and then the central pawns, has worked to perfection, but he should not have been satisfied with merely "saddling" his opponent with an isolated pawn. The "improvement" of his position by bringing the Rooks on to the open files is illusory and even endangers his game. By 17. BR6, threatening 18. BN7, he must surely have won the exchange, for which Black would not have a vestige of counterplay) 18...,PB4: 19. KRK1?, RK1: 20. BQN5?, RxRch: 21. RxR, NB5! (White sees that he can no longer preserve the two Bishops, after which the isolated pawn becomes a tower of strength. He especially tries to rake up some counterplay from the flagging remnants of his advantage in development) 22. PQN4, NR6: 23. QQ3, NxB: 24. QxN, PQR4? (A blunder which not only loses a pawn, but also provides the counterplay for which White has striven. Instead 24...,PQ5! would have effectively tied up a fair number of White's pieces and enabled Black to consolidate) 25. NN7, QQB1: 26. NXP, PQ5: 27. NB6, QR3: (This leads to a study-like ending but if he had answered the threat of 28. NK7ch by 27...,KR1, then 28. BK5 would be deadly) 28. QxQ, RxQ: 29. PN5!, RxP: 30. RN1, (Now nothing will stop the NP queening, e.g. (a) 30...,BQ4: 31. NK7ch. (b) 30...,BK3: 31. PN6, BQB1: 32. NK7ch. (c) 30...,RB7: 31. PN6 etc.) 30...,BN5: 31. PN6, BR3: 32. NN4, Resigns.

Round 7. SICILIAN DEFENCE. R.J. Sutton - R.E. Baeyertz. (Notes by R.J. Sutton). 1. PK4, PQB4: 2. NKB3, PKN3: 3. PQ4, BN2: (A favourite of Baeyertz's avoiding the unpleasantness that so frequently ensues these days when Black plays the Dragon.) 4. PQ5, PQN4!?: (Should Black now just continue development, White manoeuvres his King's Knight to QB4 /Before or after BK2 and 0-0/ with a firm grip on the position. But Black's move is premature, as he will be forced to abandon his pressure on the Q-side, which is his only trump in this kind of game) 5. BK2!, BR3: (Sooner or later something had to be done to protect the QNP) 6. 0-0, PQ3: 7. PQR4!, PN5: (Otherwise the QRP becomes an additional liability) 8. QN2, BxB: 9. QxB, PQR4: (An unnecessary move, wasting time and weakening a hitherto quite safe pawn. Against White's plan of breaking PK5, suggested by his active pieces, however, there is little to be done.) 10. NB4, NQ2: 11. BB4, QB2: (Black is to set up a last ditch defence on his K4) 12. QRQ1, (Threatening 13. PK5, PxP. 14. PQ6,) 12...,PB3: (Putting a stop to the immediate PK5, at the cost of further weakening his white squares. White must now regroup to support PK5 by PKE4) 13. KNQ2, NR3: 14. BN3, 0-0: 15. PB4, NB2: 16. KR1, KR1: 17. RB3, PKN4!?: (White threatened to double on the KB file, followed by PK5) 18. PxP, PxP: 19. R1KB1, KN1: 20. RB5, PKR3: 21. QR5!, NB3: 22. QB3, QRQ1: 23. PR3?, (Pointless. By 23. QN3! with veiled threats along the diagonal QR2 - KN8, he must surely have forced PK5) 23..PKR4! 24. PK5, (White feels, rightly or wrongly, that he cannot allow Black to improve his position further) 24...,PN5: 25. PxNP, PxNP: 26. QK2, PxP: 27. NXP, NxN: (Better was 27...,RxP with a highly complicated and uncertain position) 28. BxN, QQ2: 29. BxN, RxB: 30. RxR, PxR: 31. NB4, (The position has clarified to a certain extent. Because of the Q-side pawn position, a Knight versus Bishop ending is lost for Black; also probably if the Rooks remained on. He must try to get counterplay) 31...,RK1: 32. QQ3, KB2: 33. PKN3!, RR1ch: 34. KN2, RR4: 35. NK3, (Stalling for time) 35...,RK4:

Continued on page 54

NEW ZEALAND

Minutes of the
Rooms on Thursday

Present: I. M. Gardner
Dr. R. Gardner
(Gisborne), B. Hart
(Remuera), B. Hart
(University), and R. Glass

Also present:
R. Mills, and

Constitution:
Bulletin taken

Remit 4: Clause 4
to belong to the

Remit 5: Clause 5
would be such

Canterbury/Wellington

Remit 16: Clause 16
giving absolute

lost.

Clause 4(d): Clause 4(d)
Remit 13: Clause 13
"affiliate".

Remit 6: Clause 6
grading committee

the other committee

Clause 4(c): Clause 4(c)
Remit 2: Clause 2
change every five

inion Road.

Remit 7: Clause 7
by a two thirds

of those present

clause after "Canterbury/Otago"

Remit 8: Clause 8
by two members.

affiliate." Clause 8
any two members

Clause 5(c): Clause 5(c)
erbury/Wellington

Remit 9: Clause 9
as to how the matter

shall be stated

Remit 3: Clause 3
Passed.

Remit 11: Clause 11
the event of a

Association its

League, to keep

fit." Takapau/Wellington

NEW ZEALAND CHESS ASSOCIATION

Minutes of the Annual Meeting held in the Auckland Bridge Club Rooms on Thursday 2nd January 1964 at 2.30 p.m.

Present: I. Mitchell (representing Auckland C.C.): in the Chair. Dr. R. Gardner (Otago), L. Whitehouse (Hamilton), A. Hignett (Gisborne), B. Howard (Dominion Road), A. Hollander (Canterbury), B. Hart (Remuera), E. Saker (Ashburton), Youngman (Auckland University), K. Steele, O. Thomson and Z. Frankel (Wellington Clubs) and R. Glass (Secretary).

Also present were G. Haase, G. Trundle, A. Lentz, J. Arbutnott R. Mills, and R. Wilkin.

Constitution: (Remits are those as put forward in the November Bulletin taken in the order of Clauses in the draft Rules).

Remit 4: Clause 2(c): It should be mandatory for the N.Z.C.A. to belong to the F.I.D.E. Canterbury/Auckland. Lost.

Remit 5: Clause 4(a): Provision should be made for a Patron who would be such a person as to be of value to New Zealand chess. Canterbury/Wellington. Passed.

Remit 16: Clause 4: Takapau question the advisability of Clause 4 giving absolute power to the Council. Gisborne/Dominion Road. lost.

Clause 4(d) delete word "such" Dominion Road/Hamilton. Passed.

Remit 13: Clause 4(f): delete "two members" and substitute "affiliate". Otago/Auckland. Passed.

Remit 6: Clause 4(g): It should be mandatory to appoint a grading committee but Council would retain the right to appoint the other committees. Canterbury/Hamilton. Passed.

Clause 4(j): Passed.

Remit 2: Clause 4(k): "The headquarters of the Association shall change every fifth year between the four main centres" Otago/Dominion Road. Lost.

Remit 7: Clause 5(c) (i): It is not clear concerning the passing by a two thirds majority of votes as to whether it means the votes of those present or the votes of all affiliates. Add to end of clause after "two thirds majority of votes polled at the meeting." Canterbury/Otago. Passed.

Remit 8: Clause 5(c) (ii): Delete "shall be nominated in writing by two members." and substitute "shall be nominated in writing by an affiliate." Canterbury/Otago. and delete "nominated jointly by any two members." Otago/Canterbury. Passed.

Clause 5(c) (ii): Insert "Patron" before "President". Canterbury/Wellington. Passed.

Remit 9: Clause 5(d) (ii): Delete "and if there is any direction as to how the members representative shall vote on any motion this shall be stated in the notice." Canterbury/Hamilton. Passed.

Remit 3: Clause 5(e) (iv): Delete entirely. Otago-Auckland. Passed.

Remit 11: Clause 7(e): Delete entirely and substitute: "That in the event of a League being disaffiliated from the New Zealand Chess Association its remaining funds remain the property of the said League, to keep in trust, or dispose of as the said League thinks fit." Takapau/Gisborne. Lost.

Clause 7(e): Delete "Disaffiliated" and substitute "liquidated".
Otago/Auckland. Passed.

Remit 10: Clause 8(b): Delete Clause completely. Canterbury/
Wellington. Passed.

Remit 14: Clause 8(b): Insert "otherwise" after "Unless Council
decides". Passing of remit 10 rules this out.

Remit 15: Clause 8(c): "The Council may at its discretion impose
penalties for breaches of the rules for which no penalty is provided."
Otago/Wellington. Passed.

(This now becomes Clause 8(b))

Remit 1: That the rules as circulated and amended be adopted.
Canterbury/Gisborne. Passed.

Treasurers' Report and Accounts: Were taken as read and adopted
after it was pointed out that their adoption meant increasing the
levy to five shillings per fully financial member. Council were
instructed to look into the position of whether fees should be
increased further than 6d. each member. Dominion Road/Hamilton.

Annual Report: was then taken as read and adopted.

Officers nominated by Otago - "President: Dr. R. Gardner; Vice
President: R. Rasa; Secretary: R. Glass; Treasurer: W. Petre;
Council: G. Haase, I Hayes and R. Cooper." All elected.

Auditor: "J.F. Lang"; Hamilton/Otago. Elected.

Honoraria: "Fixed at £25 p.a. for the Secretary and £2.10.0d p.a.
for the Auditor during the current year." Hamilton/Dominion Road.
Carried.

Congress: No delegates had been instructed to apply to hold either
of the next two Congresses. Wellington and Hamilton undertook to
run the 1964-65 and 1965-66 Tournaments subject to their Leagues
approving the action.

Raffle: Mr. A. Hollander (Canterbury) reported to the meeting that
the net profit was £268.10.1d. and that the support had varied with
the different centres. It was moved by Mr. Wilkin and seconded by
Dr. Gardner that a vote of thanks be made to Canterbury for their
efforts. Carried.

Magazine: "It was recommended that Clubs advertise in the New
Zealand Chess Magazine and each take out a subscription." Mitchell/
Haase. Carried.

Zone 10 Tourney at Djakarta: "Council were recommended to make an
ex-gratia payment to Mr. O. Sarapu in the vicinity of fifty guineas."
Hollander/Whitehouse. Carried.

Letterheads: "Council were instructed to purchase printed letter-
heads." Mitchell/Hollander. Carried.

The meeting closed at 5.30 p.m.

BULLETIN No. 91:

Club and Le
carefully, apply
and keep their me
Zone 10 Tourney a
at the Annual Me
to Ortvin Sarapu
Djakarta.

Bledisloe Cup 1964

N.Z. Championship

Tourney B. Howard

N.Z. Championship

the Wellington Le

ionships. Coun

grounds that the

November Bulletin

years as provided

by that Meeting

based upon the Co

be held three tim

N.Z. Championship

Chess Club at the

is usually held o

be addressed to M

Auckland.

S.I. Championship

end at Ashburton.

No. 2 R.D., Ashbu

N.Z. Schoolboys C

as yet to hold th

September school

has been held in

Palmerston North

bus and boat fare

are called for.

Bledisloe and Bla

Affiliation Fees:

fully financial m

This increase tak

ended 31st August

new rules the curr

August 1964. Thi

quarter, of the an

for the year ende

Please note t

that of Secretary

St. Clair, Dunedin

When remittin

Club:

(a) Number of

(b) " "

(c) " "

(d) " "

(e) Name and

NEW ZEALAND CHESS ASSOCIATION

BULLETIN No. 91:

March 1964.

Club and League executives are asked to read their Bulletins carefully, apply for tournaments, supply any information requested and keep their members informed on matters printed therein.

Zone 10 Tourney at Djakarta: In accordance with the recommendation at the Annual Meeting, Council passed that a payment of £50 be made to Ortvin Sarapu to compensate for the time lost while playing at Djakarta.

Bledisloe Cup 1963: Auckland 8½ beat Canterbury 6½.

N.Z. Championship 1963-64: R.A. Court (Wellington) 1st: Reserve Tourney B. Howard, (Dominion Road) 1st.

N.Z. Championship 1964-65: Applications were received from both the Wellington League and the Otago Club to hold the 1964-65 Championships. Council granted the Congress to Wellington on the grounds that the Agenda for the Annual Meeting (published with the November Bulletin) called for the venue to be fixed for the next two years as provided in the new Rules, and that Wellington were asked by that Meeting to hold the Tournament. Otago's application was based upon the Congress Rules which stated that the Tournament shall be held three times in the North Island to two in the South Island.

N.I. Championships 1964: Will be conducted by the Dominion Road Chess Club at the Rangatira Skilodge Mount Ruapehu. The tournament is usually held during the May school holidays but inquiries should be addressed to Mr. R. Phillips, 7 Bannerman Road, Grey Lynn, Auckland.

S.I. Championships 1964: will be held during Queen's Birthday weekend at Ashburton. Secretary-Treasurer is Mr. P.W. Boag, "Tiverton", No. 2 R.D., Ashburton.

N.Z. Schoolboys Championship 1964: No applications have been received as yet to hold this event which is usually held during the August-September school holidays. Since the tournament started in 1950 it has been held in Christchurch 6 times, Wellington 5, Masterton 1, Palmerston North 1, and Dunedin 1. The Association pays for train bus and boat fares while the host centre arranges billets. Donations are called for.

Bledisloe and Blackburn Cups 1964: Entries close 31st May 1964.

Affiliation Fees: The Annual Meeting increased these from 4/6d. per fully financial member to 5/- with a quarter rebate to Leagues. This increase takes effect from the 1st September 1964 for the year ended 31st August 1965. Owing to the change in Balance Date under the new rules the current period is for fifteen months ending on the 31st August 1964. This means Clubs owe a further three months, or one quarter, of the amount they have already paid, or still have to pay, for the year ended 31st May 1964.

Please note that the position of Treasurer is now separate from that of Secretary and is held by Mr. W. Petre, 77 Bedford Street, St. Clair, Dunedin, to whom all financial matters should be referred.

When remitting the following information is required from each

Club:

- (a) Number of fully financial members at 4/6d.
- (b) " " part " " " "
- (c) " " women members included in the above.
- (d) " " members under 21 included in the above.
- (e) Name and address of each Club's secretary (Leagues please note).

Statistics: The F.I.D.E. 1963 Congress Bulletin lists information supplied by nations from the above mentioned. The country with the most number of affiliated players per 10,000 of population is the U.S.S.R. with 125.6. Iceland is next with 31.6 players. New Zealand is 16th equal but the figures show a serious downward trend if the numbers as returned by clubs and on which the levy is paid is to be believed. It is interesting to see that Australia is 18th.

New Zealand's figures per 10,000 of population are as follows:

1959	1/1/1961	1/1/1962	1/1/1963	1/1/1964
3.9	3.8	3.0	2.8	2.8

Chess Supplies: The Association is holding stocks of the following. Scoresheets 5/- per 100, Adjourned Game Diagrams 2/6d per 100, Swiss Tourney cards 1/6d per dozen, Chessboards 4/- each.

Membership of the Association:

The Opotiki Chess Club has joined and their Secretary is Mr. H. Dick, P.O. Box 68, Opotiki. Cromwell on the other hand has become defunct as far as the Association is concerned.

Several small clubs have made inquiries regarding joining in the past but have not done so, even though some of their members have played in the New Zealand Championships.

R.J. Glass,
Secretary.

c/o Radiation N.Z. Ltd.,
P.O. Box 144, DUNEDIN.

CORRESPONDENCE CHESS

N.Z.C.C.A. JANUARY NEWSLETTER

Reminder - Current T.T.'s.

Play in T.T.'s ceases on 31st March, 1964. Games not received by Mr. Brunt by the 16th April will be cancelled.

To facilitate making the new draws, each T.T. player should submit to Mr. Brunt by 20th February a summary of his prospects in any remaining game.

Best Games Prizes - Entries Solicited.

Entries are solicited for Best Games played during the 1963/64 season in Trophy Tournaments and Handicap Tourney. Last year's competition was a good beginning, but more entries are welcome this year.

For the 1963-64 New Zealand C.C. Championship the best game will be awarded the First J.A. Cunningham Memorial Best Game Prize. This has been instituted to perpetuate the memory of Jack Cunningham of Dunedin, who died last September. He had an impressive record in the Championship, winning three times, being first equal twice, and being second or third at least six times in 22 consecutive appearances. Equally importantly, he was a strong supporter of administrative progress and N.Z.C.C.A. morale generally.

Conditions for all Best Game Entries: The claimant may enter any number of games and must supply a clear copy of the score only, and on a SEPARATE sheet the name of claimant and opponent, and the event in which the game was played. (This is to preserve anonymity for the judges.) Three claimants in any class or no contest. Prizes according to entries (last year 15/-). Fee 2/6d. per game, with entries, to D.G. Brunt by 16th April.

Canadian Match.

The Canadian Other games are at that only a small September next. a most successful

Other Overseas Ma

The NZCCA has proposed British players only will participate please (Maximum about se

Also, Dr. B. a friendly match may be represente ing to play in th (Two games per pl

In both these participation by

Officers, 1964-65

The Committe Auckland, is now the revised const has been an enthus usually plays in was first equal. circles.

Mr. L.J. Kil appointed a Vice-

The new Hand with his duties, of Cor. Huygens a mail.

Handicap Director

Dear Handicappers

Sneaking in D.O.P. thanks all and wishes you al

The season's the field is R.G. pursuit is R.S. W still happen. A (8/8), R. Metge (Dunn (5/5). The qualification is be counted in the

All members We have again had always welcome. represented and, districts, some c citizens, which i a wider choice of

Canadian Match.

The Canadian CCA leads the NZCCA by $5\frac{1}{2}$ to $4\frac{1}{2}$ (at 13/1/64). Other games are at or near a critical stage, and it appears probable that only a small number will require adjudication at the end of September next. Irrespective of results, the match can be considered a most successful one.

Other Overseas Matches Projected.

The NZCCA has been invited to enter a team of six players in a proposed British Commonwealth Teams Championship. High ranking players only will be required. Will eligible players who wish to participate please notify the Secretary with their entry form? (Maximum about seven games per player).

Also, Dr. B. Lukas, Secretary General of the ICCF has proposed a friendly match against a Czechoslovakian team, in which New Zealand may be represented by players of any grade. Will any players wishing to play in this match please advise the Secretary similarly? (Two games per player). Both matches airmail.

In both these, the number of players offering will determine participation by the NZCCA.

Officers, 1964-65.

The Committee is pleased to announce that Mr. W.A. Donald, of Auckland, is now Patron of the NZCCA. The office is created under the revised constitutional Rules in force from 1/3/64. Mr. Donald has been an enthusiastic member of the NZCCA for 25 years. He usually plays in the Reserve Championship, in which last season he was first equal. Mr. Donald is well known in Auckland business circles.

Mr. L.J. Kiley, formerly Handicap Tourney Director, has been appointed a Vice-President, bringing the list up to strength.

The new Handicap Director, Cor. Huygens, has made a good start with his duties, well coached as he was by Len Kiley. Appreciation of Cor. Huygens as Handicap Director is not lacking in Secretarial mail.

Handicap Director Speaks.

Dear Handicappers,

Sneaking in through the backdoor of this interim report, your D.O.P. thanks all well-wishers at the festive season just survived, and wishes you all a happy and successful 1964.

The season's play has progressed fairly smoothly so far. Leading the field is R.G. Shaw with a clinker-built 12 out of 12, and in hot pursuit is R.S. Wilkin with 9 out of 9. However, anything can still happen. A solid basis for aspirations have: O.N. Thomson (8/8), R. Metge (7/7), W Woods (6/6), and last season's winner G.E. Dunn (5/5). The minimum number of completed games required for qualification is eight and the deadline for receipt of results to be counted in the current competition is 31st March next.

All members are urged to make converts for our Association! We have again had an enjoyable influx of new members, but more are always welcome. Auckland, Wellington and Christchurch are well represented and, for dearth of players from other centres and districts, some of the metropolitans have to be paired with fellow citizens, which is just a shade less attractive. More entries give a wider choice of partners!

A warm word of thanks is due to those willing workers who cooperate so pleasantly in taking on an extra opponent in cases where new members join up between pairing dates. The availability of this "quick kick-off reserve" is a Good Thing for our Association and gratefully acknowledged by your D.O.P.

C. HUYGENS.

New Rules (Fourth Edition).

All members will receive with sub receipts a copy of the complete new Rules, effective from 1/3/64 and from 1/4/64 in the case of the Handicap Tourney Rules. Members are recommended to familiarise themselves with these, specially the amended rules relating to the time limit and handicap scoring system, and in the constitutional section the provisions for appointment and replacement of officers. These rules have had the continuous attention of your Committee and Officers and are still open to alterations, which is why the rules will not be printed yet.

A.L. Fletcher,
Secretary/Treasurer,
39 Denny Avenue,
Mount Roskill, AUCKLAND.

15/1/64

THE NEW ZEALAND CORRESPONDENCE CHESS ASSOCIATION

Draw - Season 1964-1965.

31st NEW ZEALAND CHAMPIONSHIP.

1. E.W. HUTCHINGS, Waikanae. 2. D.R. WALKER, Wanganui. 3. Neil SMITH, Upper Hutt. 4. R.J. BROWNE, Auckland. 5. J.E. ERIKSEN, Wellington. 6. F.A. FOULDS, Auckland. 7. D.J. COOPER, Auckland. 8. Z. FRANKEL, Wellington. 9. A.L. FLETCHER, Auckland. 10. R.S. Wilkin, Auckland. 11. J.H. McDERMOTT, Dunedin.

CHAMPIONSHIP RESERVE

1. J. ARBUTHNOTT, Tauranga. 2. E. FUGLISTALLER, Hawera. 3. A.C. KUIT, Auckland. 4. A.C. GAGEN, Cambridge. 5. W.A. DONALD, Auckland. 6. J.T. PORTER, Wellington. 7. O.N. THOMSON, Wellington. 8. R.W. PARK, Inglewood. 9. C.C. SAUNDERS, New Plymouth. 10. W.H. DICK, Opotiki. 11. A.N. HIGHTTT, Auckland.

CLASS 1C

1. J.O. BISHOP, Morrinsville. 2. D.R. GORDON, Waitara. 3. N. CRUDEN, Waharoa. 4. G.R. ter HORST, Wellington. 5. R.T. BAKER, Nelson. 6. W.J. TABB, Auckland. 7. D.I. FLUDE, Wellington. 8. Victor GOODIER, Lower Hutt. 9. A. van ENCKEVORT, Whakatane. 10. R.W. KITCHINGMAN, Raumati Beach. 11. A.M. BLOMFIELD, Waitoa.

CLASS 2

1. F.A. MINTOFT, Hastings. 2. L.S. AMES, Dunedin. 3. J.C. TAYLOR, Wellington. 4. P.W. BOAG, Ashburton. 5. Richard TAYLOR, Auckland. 6. L.G. SALTER, Auckland. 7. R.L. MILLS, Tauranga. 8. Miss A.R. HOLLIS, Auckland. 9. W. WOODS, New Plymouth. 10. A.G. ROGERS, Kamo.

Note: Miss Hollis will be away from New Zealand from 26.3.64 to 6.5.64.

CLASS 3

1. L.R. PRENTICE, Inglewood. 2. L.S. TAYLOR, Auckland. 3. W.H. FRANSEN, Ashburton. 4. C.W. GRAY, Christchurch. 5. R.G. Shaw.

Lower Hutt. 6. C.
8. J.H. McARTHUR,
BROWNE, Christchurch
Auckland. 13. Mrs

1. Mrs. E. Trendl
YOUNG, Te Awamutu
Waipara. 6. A.C.
8. J.L. BECKETT,
10. E.O. BLAZEK,
OLDRIDGE, Porirua

1. J.A. BEACH, Ha
Hamilton. 4. B.D.
6. G.W. NAPIER, W
JOHNSTON, Tai Tap

1. M.M. SINCLAIR,
Wellington. 4. R.
6. N.R. HOGWOOD,
LOCKE, Lower Hutt
North Auckland.

Odd numbers
Even numbers

Examples: N
N

Tourney begin

Time Limit 72

AS

Entries are
in Ashburton over
Entries close
in three grades,
A five round
Saturday May 30th
A Players' m

Lower Hutt. 6. Glenn M. TURNER, Auckland. 7. K.W. STONE, Auckland.
8. J.H. McARTHUR, Auckland. 9. M.D. CAMPBELL, Dunedin. 10. M.E.
BROWNE, Christchurch. 11. D.G. BRUNT, Auckland. 12. V. SORENSEN,
Auckland. 13. Mrs. C.L. FRANKEL, Wellington.

T.T. CLASS 4

1. Mrs. E. Trendle, Wellington. 2. M.J.K. HOULT, Nelson. 3. D.G.
YOUNG, Te Awanui. 4. D.H. PRICE, Wanganui. 5. W.J. HENDERSON,
Waipara. 6. A.C. BARRINGTON, Nelson. 7. Ll. MEREDITH, Gisborne.
8. J.L. BECKETT, Ngaruawahia. 9. B.W. ANDERSON, Upper Hutt.
10. E.O. BLAZEK, Upper Hutt. 11. H.O. HENSMAN, Queenstown. 12. C.B.W.
OLDRIDGE, Porirua. 13. W.R. DOBSON, Christchurch.

T.T. CLASS 5A

1. J.A. BEACH, Hastings. 2. G.W. ASHBY, Auckland. 3. Alec SHAW,
Hamilton. 4. B.D. MAXWELL, Porirua. 5. R.T. BALL, Wellington.
6. G.W. NAPIER, Wellington. 7. David DRAKE, Upper Hutt. 8. Dr. W.A.
JOHNSTON, Tai Tapu. 9. E.B. RYAN, Wellington.

T.T. CLASS 5B

1. M.M. SINCLAIR, Tawa. 2. T.W.H. HOBBS, Papatotote. 3. F.G. BASHAM,
Wellington. 4. R.S. ROBINS, Christchurch. 5. T.P. DWYER, Lower Hutt.
6. N.R. HOGWOOD, Christchurch. 7. D.G. SMITH, Wellington. 8. J.M.
LOCKE, Lower Hutt. 9. A. DOMINIK, Wellington. 10. J.F. MULLER,
North Auckland.

Odd numbers have the move against greater odds and lesser evens.
Even numbers have the move against greater evens and lesser odds.

Examples: No. 7 has White versus 9, 11, 13, 2, 4, 6.
No. 6 has White against 8, 10, 12, 1, 3, 5.

Tourney begins 1st March 1964. Play ceases 31st March 1965.

Time Limit 72 hours (see rules).

D.G. BRUNT, TT Director,
7, Awaroa Road,
Henderson,
AUCKLAND.

LOCAL NEWS

ASHBURTON SOUTH ISLAND CHAMPIONSHIP

May 30th, 31st and June 1st

Entries are now called for this tournament which will be held
in Ashburton over Queen's Birthday Weekend.

Entries close May 23rd, and will be received by the Secretary
in three grades, dependent on the number of entries.

A five round Swiss Tournament will be held, beginning on
Saturday May 30th at 9.a.m.

A Players' meeting will be held at 8.30 a.m. before play begins.

Entry Fees: A Grade £2
 B £1.10.0.
 C £1

Schoolboys half price in all grades.

Accommodation: As the Ashburton Racing Club is holding a two day meeting in Ashburton over Queen's Birthday weekend, accommodation will be very limited. It is therefore essential for any players intending to book at either of the two Trust Hotels, to do so by the end of March. A limited number of rooms are being held at both the "Devon" and "Somerset" till the end of March for chess players, after which the option will be lost. Players must do their own booking, and must state that they are chess players. Tariffs:- Devon - 52/6d a day. Somerset - 60/- a day.

A limited number of schoolboys will be billeted if they apply for same by May 16th.

Secretary - Peter W. Boag. Address: 'Tiverton', No. 2 R.D. ASHBURTON.

Phone: Ashburton 900X

DUNEDIN Extracts from Report by M. Foord and from R. Rasa's column in the Dunedin "Star."

The Otago Chess Club Championship tournament is now completed with the final scores as follows:- 1. G. Haase, 8. 2. I. Hayes, 5. 3 equal M. Foord and J. Harraway, 4½. W. Petre, 4. R. Lungley and M. Robb 3. A. Twose and R. Watt, 2½. L. Amies, 2.

The above placings are not necessarily correct indication of the player's ability, as all games were not played.

In the Intermediate Grade, with many games not played, only seven players qualified for the count. First equal were L. Hellyer and R. Lockhart, with 4. M. Muir and G. Kerr 3. W. Hunsche and G. Bates 2½. W. Chandler ½.

The Junior Grade had by far the best tournament for many years. In a keenly contested struggle three school boys headed the names. Scores: K.D. Smyth 9, 1st. B. Patterson 8½, 2nd. D. Stewart 7½, 3rd. J. Garrett and R. Strickett 6½, 4th. P. Collins 5½, 6th. G. Williams 5, 7th. C. Kramer, D. Carley and S. Emslie 4, 8th. B. Collins 3½, 11th. followed by Barnett and D. Cameron.

WELLINGTON: 1. CIVIC CHESS CLUB. The annual meeting of the Club was held on 14th March and the following officers were elected.

Mr. G. Bishop - Patron. Mr. J.G. Price - President. Messrs. J. Bartle and S. Davidson - Vice Presidents. Miss Edwards Secretary. Mr. D. Stracey - Treasurer, Mr. F. Bondy, Captain, A. Cox, Vice Captain.

Committee: Messrs. J. Miller, C. Morton, J. Martin, R. Bluck.

The annual report of the Club states that the Club has 48 ordinary financial members and that they had, financially, a good year.

The Report gives a clear picture of the financial position of the Club and results of the competitions, which we have published in a previous issue.

The Club is developing well and although all past Club officers have contributed to this factor the principal persons worthy of mention are the following past officers of the Club:- Mr. A. Todd the President. Mr. A. Cox the Secretary-Treasurer, Messrs. J. Bartle and F. Bondy, Club Captain and Vice Captain respectively.

Wellington Chess
 E. Frost, 7-3. (unplayed). D. G. B. Grade: C.
 A. Dominik, 5½-4½. Petherick Bar points; W.A. Poole Summer Open.
 6-2; J. Howe, R. A.B. Miller, D.M. Club Rating I

1. J. Eriksen
2. A. Feneridis
3. R.A. Court
4. Z. Frankel
5. H. McNabb
6. J. Howe
7. K.M. Steele
8. R. Chapman
9. K. Beyer
10. W.A. Poole
11. C.B. Newick
12. B. Deben
13. O.N. Thomson
14. R.M. O'Callaghan
15. B.J. Halpin
16. E. Frost
17. J.L. Hardy
18. A.B. Miller

New Zealand Chess

The remainder are now complete. Thus the score and Feneridis 2 whether the se

HUTT VALLEY

Club

1. A. Borren
2. R. Cockcroft
3. F. Fodor
4. R. Kent
5. R. O'Callaghan
6. B. Painter
7. R. Teece

A well-deserved was probably du isation and sur old form next y

Wellington Chess Club 1963 Reserve Championship, H.J. Fuller, 7½-2½.
 E. Frost, 7-3. D.M. Stracy, 6½-3½. P. Allerhand, 6-4. (3 games
 unplayed). D. Goble, J.L. Hardy, R. Gordon, A.B. Miller, all 5-5.
 B. Grade: C.B. Oldridge 8-2; G. Harris and Mrs. Z. Frankel 6-4;
 A. Dominik, 5½-4½; M.H. Roberts, R.J. Woodford, 5-5.
 Petherick Handicap. A. Dominik, 7½ points; O.N. Thomson, 5
 points; W.A. Poole and M. Ponomoni each 4.
 Summer Open. (8 round Swiss): Z. Frankel, 7-1; K.M. Steele
 6-2; J. Howe, R. Gordon, O.N. Thomson, each 5-3; R.M. O'Callahan,
 A.B. Miller, D.M. Stracey, each 4-4.

Club Rating List:

1. J. Eriksen	638	19. R. Gordon	448
2. A. Feneridis	630	20. H.J. Fuller	440
3. R.A. Court	604	21. D.M. Stracey	424
4. Z. Frankel	598	22. D. Goble	415
5. H. McNabb	575	23. M. Ponomoni	404
6. J. Howe	566	24. A. Hiller	404
7. K.M. Steele	557	25. Mrs. Z. Frankel	395
8. R. Chapman	550	26. A. Dominik	393
9. K. Beyer	543	27. J.C. Taylor	389
10. W.A. Poole	538	28. R. Shaw	383
11. C.B. Newick	537	29. M.J. Mackay	380
12. B. Deben	528	30. R.J. Woodford	376
13. O.N. Thomson	498	31. C.B. Oldridge	353
14. R.M. O'Callahan	493	32. D. Pickering	350
15. B.J. Halpin	469	33. G. Harris	348
16. E. Frost	466	34. M.H. Roberts	335
17. J.L. Hardy	460	35. P. Graham	314
18. A.B. Miller	450	36. P. Bennett	306
		37. J. Froome	265

New Zealand Chess Magazine Invitation Tournament.

The remaining two games of the first half of this tournament are now completed. Poole beat Frankel and Court drew with Poole. Thus the score at the moment is Court 3, Poole 2, Chapman, Clarke, and Feneridis 2½ each, Frankel 1½. It is not yet known when and whether the second half of this tournament will be played.

HUTT VALLEY Extract from a Report by W. Ramsay.

Club Championship A Grade. Giesen Cup

	1	2	3	4	5	6	7	Total	Play off
1. A. Borren	x	0	0	½	1	1	1	3½	
2. R. Cockcroft	1	x	1	1	0	1	1	5	1
3. F. Fodor	1	0	x	1	0	0	0	2	
4. R. Kent	½	0	0	x	0	0	0	½	
5. R. O'Callahan	0	1	1	1	x	1	1	5	0
6. B. Painter	0	0	1	1	0	x	½	2½	
7. R. Teece	0	0	1	1	0	½	x	2½	

A well deserved win by R. Cockcroft. Roy Kent's lowly position was probably due to health reasons which necessitated his hospitalisation and surgery late in the season. We expect him back to his old form next year.

Intermediate Championship B Grade. Wilson Trophy

1. T. Burgess, 7 points: 2. E. Freyberg, 6½: 3. C. Wakefield, 6:
4. G. Brown and G. Megaffin, 5: W. Ramsay and H. Boyack 4½:
J. Hess, 4: R. Townsend ½: R. McKenzie 0.

T. Burgess and C. Wakefield, returning to the Club after a short absence, virtually dominated the B Grade. The consistent E. Freyberg and giant killer G. Megaffin (wins against the top three place-getters) and G. Brown, made up the first five.

Championship C Grade. Bakewell Rook

J. Borren 4 points: R. Shaw 4: A. Kelly 3: Mrs. Boyack 2: I. Knott 1: C. Swift 0.

The tie between R. Shaw and J. Borren was broken in favour of the former.

The smooth running of these tournaments was mainly due to the efforts of Bob Teece.

CHRISTCHURCH The Canterbury Chess Club annual report for the year ended 30 September 1963 is once more an interesting document (see our January issue 1963).

The President's Report. Membership of the Club remained fairly steady, the number for the year was 95 against 97 in the previous year. One of the main activities of this Club was not only for their internal benefit but fund raising for the New Zealand Chess Association. An outstanding success was the organisation of a raffle about which a report appeared in the last issue. The President, Mr. A.S. Hollander's report states that much work on this was done by the Club's Vice-Presidents, Messrs. Cleary and Nyman. We would add to this Mr. Hollander's name, who obviously could not mention himself.

The annual report also mentions publication of the New Zealand Chess Magazine and its development. We would add to this that the Canterbury Club has been so far the only one supporting our public-

ation by advertising.

The report also mentions the successful running of the Christchurch Province Schoolboys' Championship. Over 40 schools took part and Roger Clarke supervised the event.

Mr. Sumner the Club Treasurer reports on the finances of the Club which have not been as successful during this year as last year, mainly owing to substantial expenditure towards repair and maintenance and a donation towards the 1962-63 Congress. On the income side the Club has not benefited from shop sales nor from gate takings at the Industrial Fair as occurred in the previous year.

However, the Club is still financially the strongest in New Zealand and the expectations of improvements in the forthcoming year are good.

Following are the results of the Club competitions. Some of them have already been reported in detail in previous issues.

Senior Championship: 1. R.D. Clarke: 2. G.V. Sumner: 3rd equal A. Nyman and A. Wilkinson.

Intermediate Championship: 1. P. Loughton; 2. B.R. Anderson: 3. R.W. Smith.

Junior Champion
Carpenter.
Hart Memorial
54 points: 5. A.
Duff Cup: 1.
Improvers Cup

Since this re
player, Roger Cla
Wilkinson and B.R.
in the 1963-64 Na
improving rapidly
the Club.

Solutions to

- No. 9. 1. PKN4,
- No. 10. 1. PB7,
5. BR3(E)
- No. 11. 1. PB4ch
5. KB1,
If 1...
- No. 12. 1. RxN,
- No. 13. 1. RQR8,
PxP: 5.
- No. 14. 1. FR5,
5. BQ4 m

There were n
did not give Blac

Winners were
11-12 G. Severina
will receive book

Annual Ladder

- 1. G. Severin
- inson, (49): 4.
- Auckland, (20): 6
- Christchurch, (10)
- Auckland, (4): 2

The first 20

We regret th

award prizes for

prizes for the fi

Junior Championship: 1. P. Fraemohs: 2. L.F. Josland: 3. B.A. Carpenter.

Hart Memorial: 1. A. Wilkinson, 73 points: 2. D. Hewison, 54 points: 3. A.S. Hollander, 43 points.

Duff Cup: 1. R.D. Clarke: 2. G.V. Sumner: 3. A. Wilkinson.

Improvers Cup: B.R. Anderson.

Since this report has been published the club has lost its best player, Roger Clarke, who is now resident in Wellington, but A. Wilkinson and B.R. Anderson, two young players, who were well placed in the 1963-64 National Championship Reserve Tournament, are improving rapidly and this augurs well for the future strength of the Club.

PROBLEM SECTION

Editor, K.M. Steele

Solutions to problems August-September-October 1963 issue.

- No. 9. 1. PKN4, BxQ: 2. RxRPch, PxR: 3. FN5ch, RxP: 4. PxR mate.
- No. 10. 1. PB7, KN2: 2. P queens, KxQ: 3. BN4, KQ2: 4. KB7, RR3: 5. BR3(B5) etc.
- No. 11. 1. PB4ch, KxB: 2. QN3, QB2ch: 3. KK2, QR4ch: 4. PKN4!, QxPch: 5. KB1, KR3: 6. QR4ch, KN3: 7. PB5ch etc.
If 1...KR6: 2. QR1ch, KN6: 3. QB3ch, KR7: 4. BN4 etc.
- No. 12. 1. RxN, P queens: 2. RxP, QQB8: 3. RR6ch, QxR: 4. RR6ch etc.
- No. 13. 1. RQR8, RN3(best): 2. RR5ch, RN4: 3. RR6!, PQ5!: 4. RKB6!, PXP: 5. PxP, KQ4: 6. RB5ch etc.
- No. 14. 1. PR5, KN4: 2. BxP, KB5: 3. BB6, KK6: 4. BK5, KB7: 5. BQ4 mate.

There were no complete solutions to Number 13. Most solvers did not give Black's best defence.

Winners were as follows:- 9-10 A. Wilkinson, Christchurch: 11-12 G. Severinsen, Takapau: 13-14 Dr. Fulton, Ashburton: Winners will receive book prizes.

Annual Ladder Competition 1963: Final Scores.

1. G. Severinsen, 83 points: 2. Dr. N. Fulton, (50): 3. A. Wilkinson, (49): 4. R. Gordon, Hastings, (39): 5. J.H. Patchett, Auckland, (20): 6. W. Ramsey, Wellington, (12): B. Anderson, Christchurch, (10): N. Cooper, Christchurch, (9): J.R. Youngman, Auckland, (4): L.P. Jones, Napier, (3): J. Pakenham, Auckland (2).

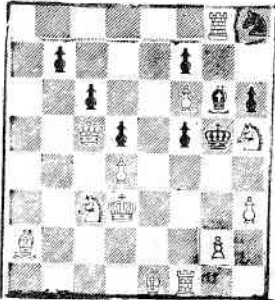
The first three on the ladder will receive prizes.

We regret that from this issue onwards we will be unable to award prizes for competitions in each issue. There will be only prizes for the first three places in the Annual Ladder Competition

1964 which commenced with the set of problems in the January 1964 issue and concludes with the set in the December 1964 issue.

IMPORTANT. Owing to poor print, Problem Number 15 in the January issue has been cancelled.

19. W.E. ROBERTS.
Australian Problemist 1962



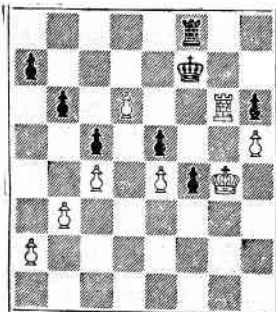
White to play and mate in three

20. E.A. VIRTANEN
Second Prize, Spanish Chess Problem Society 1958.



White to play and mate in three.

21. PETROSYAN - TAL 1963



(Give five moves by White to reach a winning position)

22. C. MANSFIELD (4th Prize, B.C.P.S. Informal Tourney 1962)



White to play and mate in two.

(Please give full solution not merely key move)

N.B. 19, 20, 21 carry seven points each and 22 five points.

Solutions to reach Problems Editor by 15 May 1964.